

Appendix A Master Programme

Activity ID	Activity Name	Primary Constraint	At Completion Duration	Current Start	Current Finish	Actual Start	Actual Finish	Late Start	Late Finish	Total Float	Activity % Complete	M28 Remarks
EP_SP_66_12-WP-3-M28 Programme for Design and Construction Works WP3-M28												
EP_SP_66_12-WP-3-M28.01 Key Dates												
EP_SP_66_12-WP-3-M28.01.1 Contractual Key Dates												
EP_SP_66_12-WP-3-M28.01.1.1 Design and Construction Phase												
01-1000	Contract Award/Date of Acceptance of Tender	Mandatory Start	0	0	0	22-Nov-17 A	22-Nov-17 A			0	100%	Contract Award/Date of Acceptance of Tender: 22-Nov-17 A
01-1010	Date of Commencement of the Design and the Works	Mandatory Start	0	0	0	15-Dec-17 A	15-Dec-17 A			0	100%	Date of Commencement of the Design and the Works: 15-Dec-17 A
01-1015(3)(M12)	Original Substantial Completion of the Works	Mandatory Finish	0	27-Jul-24	27-Jul-24	27-Jul-24*	27-Jul-24			0	0%	Original Substantial Completion of the Works
01-1015-1(3)(M12)	Extension of time granted (Claim No.1 to No.8 & No.10 to No.11)		41	27-Jul-24	13-Sep-24	27-Jul-24	13-Sep-24	27-Jul-24	13-Sep-24	0	0%	27-Jul-24: 13-Sep-24, Extension of time granted (13-Sep-24 to 29-Jan-25), Extension of time
01-1016(3)(M18)	Extension of time granted without holidays (Claim No.12 to No.26)	Mandatory Finish	138	13-Sep-24	29-Jan-25	13-Sep-24	29-Jan-25	13-Sep-24	29-Jan-25	0	0%	13-Sep-24: 29-Jan-25, Extension of time
01-1020	Extended Substantial Completion of The Works	Mandatory Finish	0	29-Jan-25	29-Jan-25	29-Jan-25*	29-Jan-25			0	0%	29-Jan-2025 (noon)
EP_SP_66_12-WP-3-M28.01.2 Operation Phase												
01-1030	Commencement of Operation	Mandatory Start	0	30-Jan-25	30-Jan-25	30-Jan-25*	30-Jan-25			0	0%	Commencement of Operation
01-1230	Issue Certificate of Completion of the Works (56 days after Substantial Completion)	Mandatory Finish	0	26-Mar-25	30-Jan-25*	26-Mar-25*	30-Jan-25			0	0%	Issue Certificate of Completion of the Works
EP_SP_66_12-WP-3-M28.01.2 Planned Completion Dates												
01-1040	Incoming Power Energization to IWMF Substation		0	10-Sep-24	02-Jun-24	10-Sep-24	02-Jun-24			-101	0%	Incoming Power Energization to IWMF Substation
01-1050	Export Power to Grid		0	24-Sep-24	06-Sep-24	24-Sep-24	06-Sep-24			-19	0%	Export Power to Grid
01-1060	Issuance of FS Certificate		0	08-Jan-25	23-Aug-24	08-Jan-25	23-Aug-24			-139	0%	Issuance of FS Certificate
01-1070	Completion of Civil Provision for Transmission		0	04-Jan-23	02-Jan-23	04-Jan-23	02-Jan-23			-3	0%	Completion of Civil Provision for Transmission
01-1080	Commencement of C1.3.4.11 System Commissioning Test		0	06-Oct-24	15-Jun-24	06-Oct-24	15-Jun-24			-113	0%	Commencement of C1.3.4.11 System Commissioning Test
01-1090	Completion of C1.3.4.11 System Commission Test		0	17-Jan-25	23-Aug-24	17-Jan-25	23-Aug-24			-148	0%	Completion of C1.3.4.11 System Commission Test
01-1100	Completion of 90 Days Plant Commissioning Test		0	01-May-25	05-Dec-24	01-May-25	05-Dec-24			-148	0%	Completion of 90 Days Plant Commissioning Test
01-1110(3)(M15)	Issue of Certificate of Substantial Completion for the Works	Finish On or Before	0	25-Jun-25	29-Jan-25	25-Jun-25*	29-Jan-25			-148	0%	Issue of Certificate of Substantial Completion for the Works
EP_SP_66_12-WP-3-M28.01.3 Dates of Site Possessions												
01-1120	Possession of Portion 1		0			15-Dec-17 A				100%		Possession of Portion 1
01-1130	Possession of Portion 1A		0			15-Dec-17 A				100%		Possession of Portion 1A
01-1140	Possession of Portion 1B		0			15-Dec-17 A				100%		Possession of Portion 1B
01-1150	Possession of Portion 2	Mandatory Finish	0	30-Jan-25	30-Jan-25*	30-Jan-25	30-Jan-25			0	0%	Possession of Portion 2
01-1160	Possession of Portion 3		0	13-Dec-20	12-Jan-22	13-Dec-20	12-Jan-22			394	0%	Possession of Portion 3
01-1170	Possession of Portion 4		0	13-Dec-20	12-Jan-22	13-Dec-20	12-Jan-22			394	0%	Possession of Portion 4
01-1180	Possession of Portion 5		0	13-Dec-20	12-Jan-22	13-Dec-20	12-Jan-22			394	0%	Possession of Portion 5
01-1190	Possession of Portion 6		0	17-Jul-24	27-Mar-24	17-Jul-24	27-Mar-24			-113	0%	Possession of Portion 6
01-1200	Possession of Portion 7	Finish On or Before	0			05-Jan-18 A				100%		Possession of Portion 7
01-1210	Possession of Portion 7A	Finish On or Before	0			07-Dec-18 A				100%		Possession of Portion 7A
EP_SP_66_12-WP-3-M28.02 Contract Preliminaries												
EP_SP_66_12-WP-3-M28.02.0 General												
01-1220	Provision of Contractor All Risk Insurance (COC 24.1)	Finish On or Before	0			11-Dec-17 A				100%		Provision of Contractor All Risk Insurance (COC 24.1)
01-1240	Provision of Employee Compensation Insurance (COC 25)	Finish On or Before	0			12-Dec-17 A				100%		Provision of Employee Compensation Insurance (COC 25)
01-1250	Provision of Contractor's Professional Indemnity Insurance (COC 24.2(a))	Finish On or Before	0			11-Dec-17 A				100%		Provision of Contractor's Professional Indemnity Insurance (COC 24.2(a))
EP_SP_66_12-WP-3-M28.02.1 Employer's Accommodations												
02-1000	Establishment of Employer's Off Island Temporary Accommodation	Finish On or Before	87	02-Apr-22	27-May-22	03-Jan-18 A	27-May-22	27-Dec-21	21-Feb-22	-96	100%	Establishment of Employer's Off Island Temporary Accommodation: 31-Mar-18 A
02-1020	Establishment of Employer's On Island Temporary Accommodation		56	02-Apr-22	27-May-22	02-Apr-22	27-May-22	27-Dec-21	21-Feb-22	-96	0%	02-Apr-22: 27-May-22, Establishment of Employer's On Island Temporary Accommodation
EP_SP_66_12-WP-3-M28.02.2 Establishment of Environmental Monitoring Stations												
02-1030	Establishment of Air Quality Monitoring Station at Portion 3 (12m Prior to T&C)		180	07-Oct-21	04-Apr-22	07-Oct-21	04-Apr-22	12-Jan-22	11-Jul-22	97	0%	07-Oct-21: 04-Apr-22, Establishment of Air Quality Monitoring Station at Portion 3 (12m Prior to T&C)
02-1040	Establishment of Air Quality Monitoring Station at Portion 4 (12m Prior to T&C)		180	07-Oct-21	04-Apr-22	07-Oct-21	04-Apr-22	12-Jan-22	11-Jul-22	97	0%	07-Oct-21: 04-Apr-22, Establishment of Air Quality Monitoring Station at Portion 4 (12m Prior to T&C)
02-1050	Establishment of Air Quality Monitoring Station at Portion 5 (12m Prior to T&C)		180	07-Oct-21	04-Apr-22	07-Oct-21	04-Apr-22	12-Jan-22	11-Jul-22	97	0%	07-Oct-21: 04-Apr-22, Establishment of Air Quality Monitoring Station at Portion 5 (12m Prior to T&C)
EP_SP_66_12-WP-3-M28.02.3 Erection of Concrete Batching Plant on Artificial Island												
02-1080	Erection of Concrete Batching Plant		60	28-May-22	26-Jul-22	28-May-22	26-Jul-22	03-Jan-22	04-Mar-22	-145	0%	28-May-22: 26-Jul-22, Erection of Concrete Batching Plant
02-1090	Commissioning of Concrete Batching Plant		30	27-Jul-22	25-Aug-22	27-Jul-22	25-Aug-22	04-Mar-22	03-Apr-22	-145	0%	27-Jul-22: 25-Aug-22, Commissioning of Concrete Batching Plant
02-1100	Operation of Concrete Batching Plant		500	26-Aug-22	07-Jan-24	26-Aug-22	07-Jan-24	22-Jun-22	04-Nov-23	-65	0%	26-Aug-22: 07-Jan-24, Operation of Concrete Batching Plant
02-1110	Demobilization of Concrete Batching Plant		60	08-Jan-24	07-Mar-24	08-Jan-24	07-Mar-24	04-Nov-23	03-Jan-24	-65	0%	08-Jan-24: 07-Mar-24, Demobilization of Concrete Batching Plant
EP_SP_66_12-WP-3-M28.02.4 Establishment of Public Relation Office												
02-1060	SO issue instruction for provision of IWMF Information Office(s) (IWMFIO) (Tentative)		0	31-Mar-20	31-Mar-20	31-Mar-20	31-Mar-20	19-Apr-21	19-Apr-21	384	0%	SO issue instruction for provision of IWMF Information Office(s) (IWMFIO) (Tentative)
02-1070(2)	Submission and approval for location, layout and details of IWMF Information Office(s)		0	21-Apr-20	19-Jun-20	21-Apr-20	19-Jun-20	10-May-21	09-Jul-21	384	0%	21-Apr-20: 19-Jun-20, Submission and approval for location, layout and details of IWMF Information Office(s)
02-1120(2)	Establishment of IWMF Information Office(s)		90	20-Jun-20	17-Sep-20	20-Jun-20	17-Sep-20	09-Jul-21	07-Oct-21	384	0%	20-Jun-20: 17-Sep-20, Establishment of IWMF Information Office(s)
02-1140(2)	Decommissioning of IWMF Information Office(s)		30	29-Jan-26	28-Feb-26	29-Jan-26	28-Feb-26	29-Jan-26	28-Feb-26	0	0%	29-Jan-26: 28-Feb-26, Decommissioning of IWMF Information Office(s)
EP_SP_66_12-WP-3-M28.02.5 Replacement of Onshore Crane at Portion 2												
02-1150(2)	Replace Crane No. 1 (Incl. T&C)		90	30-Apr-25	28-Jul-25	30-Apr-25	28-Jul-25	02-Aug-25	31-Oct-25	94	0%	30-Apr-25: 28-Jul-25, Replace Crane No. 1 (Incl. T&C)
02-1160(2)	Replace Crane No. 2 (Incl. T&C)		90	28-Aug-25	25-Nov-25	28-Aug-25	25-Nov-25	30-Nov-25	28-Feb-26	94	0%	28-Aug-25: 25-Nov-25, Replace Crane No. 2 (Incl. T&C)
02-1170(2)	Install, Testing and Commissioning of CCTV System		120	30-Apr-25	27-Aug-25	30-Apr-25	27-Aug-25	31-Oct-25	28-Feb-26	184	0%	30-Apr-25: 27-Aug-25, Install, Testing and Commissioning of CCTV System
02-1180(2)	Install, Testing and Commissioning of Onshore Power Supply System		120	30-Apr-25	27-Aug-25	30-Apr-25	27-Aug-25	31-Oct-25	28-Feb-26	184	0%	30-Apr-25: 27-Aug-25, Install, Testing and Commissioning of Onshore Power Supply System
EP_SP_66_12-WP-3-M28.03 Licence/Permit Applications												
EP_SP_66_12-WP-3-M28.03.1 License/Permit for Construction												
03-0900	Marine Department Notification for Ground Investigation Works		75	15-Dec-17 A	27-Feb-18 A	15-Dec-17 A	27-Feb-18 A			100%		Marine Department Notification for Ground Investigation Works: 27-Feb-18 A
03-1000	Marine Department Notification for Construction Works		76	20-Apr-18 A	05-Jul-18 A	20-Apr-18 A	05-Jul-18 A			100%		Marine Department Notification for Construction Works: 05-Jul-18 A
03-1010	EPD Waste Producer License for Construction Works		90	15-Dec-17 A	15-Mar-18 A	15-Dec-17 A	15-Mar-18 A			100%		EPD Waste Producer License for Construction Works: 15-Mar-18 A
03-1020	EPD Chemical Waste Producer License for Construction Works		78	15-Dec-17 A	03-Mar-18 A	15-Dec-17 A	03-Mar-18 A			100%		EPD Chemical Waste Producer License for Construction Works: 03-Mar-18 A
03-1030	EPD Waste Disposal License for Construction Materials		12	03-Jan-18 A	15-Jan-18 A	03-Jan-18 A	15-Jan-18 A			100%		EPD Waste Disposal License for Construction Materials: 15-Jan-18 A
03-1040	Labour Department Notification of Construction Works	Finish On or Before	5	15-Dec-17 A	20-Dec-17 A	15-Dec-17 A	20-Dec-17 A			100%		Labour Department Notification of Construction Works: 20-Dec-17 A
03-1050	EPD (ACPO) Notification of Construction Works	Finish On or Before	14	15-Dec-17 A	28-Dec-17 A	15-Dec-17 A	28-Dec-17 A			100%		EPD (ACPO) Notification of Construction Works: 28-Dec-17 A
03-1060	EMSD Notification of Commencement of Works (Lifts & Escalators)		60	19-Jul-23	16-Sep-23	19-Jul-23	16-Sep-23	22-Sep-23	21-Nov-23	65	0%	19-Jul-23: 16-Sep-23, EMSD Notification of Commencement of Works (Lifts & Escalators)
03-1070	Notice of Commencement to CIC	Finish On or Before	5	15-Dec-17 A	20-Dec-17 A	15-Dec-17 A	20-Dec-17 A			100%		Notice of Commencement to CIC: 20-Dec-17 A
03-1080	CNP for Percussive Piling Works	As Late As Possible	90	12-Dec-21	11-Mar-22	12-Dec-21	11-Mar-22	17-Jul-21	15-Oct-21	-148	0%	12-Dec-21: 11-Mar-22, CNP for Percussive Piling Works
03-1090	EPD APCO (SP) License for Concrete Batching Plant	As Late As Possible	270	31-Aug-21	27-May-22	31-Aug-21	27-May-22	08-Apr-21	03-Jan-22	-145	0%	31-Aug-21: 27-May-22, EPD APCO (SP) License for Concrete Batching Plant
03-1300	Prepare and Submit EP Application to Clause 1.38(6) of Spec A	Finish On or Before	7	15-Dec-17 A	21-Dec-17 A	15-Dec-17 A	21-Dec-17 A			100%		Prepare and Submit EP Application to Clause 1.38(6) of Spec A: 21-Dec-17 A
03-1310(2)	Dumping Permit Application for Dredging Works		107	06-Nov-18 A	21-Feb-19 A	06-Nov-18 A	21-Feb-19 A			100%		06-Nov-18 A: 21-Feb-19 A, Dumping Permit Application for Dredging Works: 21-Feb-19 A
03-1360(1)	Marine Department Notification for Construction Works (Seawall)	Finish On or After	15	10-Jan-19 A	25-Jan-19 A	10-Jan-19 A	25-Jan-19 A			100%		10-Jan-19 A: 25-Jan-19 A, Marine Department Notification for Construction Works (Seawall): 25-Jan-19 A
03-1360(2)	CNP for 24Hrs	Finish On	323	31-Mar-20	19-Jun-20	02-Aug-19 A	19-Jun-20	30-Mar-20	18-Jun-20	-1	55.49%	02-Aug-19 A: 19-Jun-20, CNP for 24Hrs: 19-Jun-20, CNP for 24Hrs
EP_SP_66_12-WP-3-M28.03.2 DG Licence												
EP_SP_66_12-WP-3-M28.03.2.1 Day Tank & Fuel Oil Storage (Cat 5)												
03-1400	Plans and FSI Provision Design Submission to FSD	As Late As Possible	21	23-Jun-23	13-Jul-23	23-Jun-23	13-Jul-23	15-Mar-23	05-Apr-23	-100	0%	23-Jun-23: 13-Jul-23, Plans and FSI Provision Design Submission to FSD
03-1410	DGD and VD Review and Approval of Submission	As Late As Possible	180	14-Jul-23	09-Jan-24	14-Jul-23	09-Jan-24	05-Apr-23	02-Oct-23	-100	0%	14-Jul-23: 09-Jan-24, DGD and VD Review and Approval of Submission
EP_SP_66_12-WP-3-M28.03.2.1.1 IWMF Substation E Gen RM												
03-1420	DGD Compliance Inspection, Defects Rectification and Re-inspection		88	10-Jan-24	06-Apr-24	10-Jan-24	06-Apr-24	02-Oct-23	29-Dec-23	-100	0%	10-Jan-24: 06-Apr-24, DGD Compliance Inspection, Defects Rectification and Re-inspection
03-1430	VD Compliance Inspection, Defects Rectification and Re-inspection		60	24-Jan-24	23-Mar-24	24-Jan-24	23-Mar-24	16-Oct-23	15-Dec-23	-100	0%	24-Jan-24: 23-Mar-24, VD Compliance Inspection, Defects Rectification and Re-inspection
03-1440	Issue of DG Licence		14	24-Mar-24	06-Apr-24	24-Mar-24	06-Apr-24	15-Dec-23	29-Dec-23	-100	0%	24-Mar-24: 06-Apr-24, Issue of DG Licence

Primary Baseline	Critical Remaining Work	Actual Milestone
WP3 BL Critical Works	Baseline Milestone	Critical Milestone
Remaining Work	WP3 BL Critical Milestone	
Actual Work	Milestone	

Date	Revision	Checked	Approved
04/12/17	Rev. 0 - 1st Issue		
31-Jan-20	Rev 3 - Jan 2020 Update		
29-Feb-20	Rev 3 - Feb 2020 Update		
30-Mar-20	Rev 3 - Mar 2020 Update		

Activity ID	Activity Name	Primary Constraint	At Completion Duration	Current Start	Current Finish	Actual Start	Actual Finish	Latest Start	Latest Finish	Total Float	Activity % Complete	M28 Remarks
05-1020	Ash Cranes	Start On or After	244			07-Sep-18 A	09-May-19 A				100%	
05-1030	Leachate Collection and Treatment	Start On or After	245			25-May-18 A	25-Jan-19 A				100%	
05-1040	Waste Water Treatment System	Start On or After	361			06-Jul-18 A	02-Jul-19 A				100%	
05-1050	Overall Plan Water Scheme	Start On or After	350			24-May-18 A	09-May-19 A				100%	
05-1060	Boiler Feed Water System	Start On or After	223			21-Mar-18 A	30-Oct-18 A				100%	
EP_SP_66_12-WP-3-M28.05.01.01.2	MSW treatment process design for mechanical treatment (2.1.02)		707	31-Mar-20	13-Jul-20	07-Aug-18 A	13-Jul-20	02-May-20	15-Aug-20	32		
05-1090	Mechanical Treatment Plant (2.1.02.01)	Start On or After	105	31-Mar-20	13-Jul-20	31-Mar-20*	13-Jul-20	02-May-20	15-Aug-20	32	0%	
05-1100	Desalination Plant and Boiler Water Treatment (Demin Unit) Plant (2.1.02.02)	Start On or After	345			07-Aug-18 A	18-Jul-19 A				100%	
EP_SP_66_12-WP-3-M28.05.01.01.3	Waste heat recovery and Power generation system (2.1.03)		323			24-May-18 A	12-Apr-19 A					
05-1110	Power Island (Steam Turbine Generator, Pressure Reducing and Desuperheating Station, Air Cooled Cond)	Start On or After	323			24-May-18 A	12-Apr-19 A				100%	
05-1120	Closed Circuit Cooling Water System	Start On or After	323			24-May-18 A	12-Apr-19 A				100%	
05-1130	Compressed Air Plants	Start On or After	232			04-Jul-18 A	21-Feb-19 A				100%	
EP_SP_66_12-WP-3-M28.05.01.01.4	Flue gas treatment process design for incineration (2.1.04)		270			15-Mar-18 A	10-Dec-18 A					
05-1070	Flue Gas Treatment System	Start On or After	242			15-Mar-18 A	12-Nov-18 A				100%	
05-1080	Boiler ash and APC residue handling and solidification	Start On or After	199			25-May-18 A	10-Dec-18 A				100%	
EP_SP_66_12-WP-3-M28.05.01.01.5	Logistic arrangement design for MSW and Ash and Residues (2.1.05)		384			05-Jul-18 A	24-Jul-19 A					
05-1140	Weighbridge Systems	Start On or After	152			05-Sep-18 A	04-Feb-19 A				100%	
05-1150	Waste Crane and Grapple System	Start On or After	221			05-Jul-18 A	11-Feb-19 A				100%	
05-1160	Mechanical Shredder	Start On or After	243			23-Nov-18 A	24-Jul-19 A				100%	
EP_SP_66_12-WP-3-M28.05.01.01.6	Site Master Layout Plan and Plant Layout (2.1.06)		766	31-Mar-20	31-May-20	27-Apr-18 A	31-May-20	31-Dec-20	03-Mar-21	275		
05-3020	Site Master Layout Plan and Plant Layout		766	31-Mar-20	31-May-20	27-Apr-18 A	31-May-20	31-Dec-20	03-Mar-21	275	65%	
EP_SP_66_12-WP-3-M28.05.01.01.7	Statutory Fire Compliance (2.1.25)		123	31-Mar-20	31-Jul-20	31-Mar-20*	31-Jul-20	10-Apr-19	26-Feb-21	209		
05-2990	Fire Safety Compliance	Start On or After	123	31-Mar-20	31-Jul-20	31-Mar-20*	31-Jul-20	10-Apr-19	10-Aug-19	-356	0%	
05-3000	Fire Engineering Report	Start On or After	123	31-Mar-20	31-Jul-20	31-Mar-20*	31-Jul-20	10-Apr-19	10-Aug-19	-356	0%	
05-3010	Fire Compartmentation / FS compliance	Start On or After	123	31-Mar-20	31-Jul-20	31-Mar-20*	31-Jul-20	26-Oct-20	26-Feb-21	209	0%	
EP_SP_66_12-WP-3-M28.05.01.02	AIP Ground Treatment, Reclamation, Seawall, Breakwater, Berth (2.2)		913	31-Mar-20	12-Aug-20	12-Feb-18 A	12-Aug-20	26-Nov-19	20-Jul-21	341		
05-1170	Deep Cement Mixing Design (2.2.00)	Start On or After	136			27-Mar-18 A	10-Aug-18 A				100%	
05-1180	Ground Investigation Proposal (2.2.01.01)	Start On or After	143			12-Feb-18 A	05-Jul-18 A				100%	
05-1190	Preliminary Geotechnical Interpretative Report (2.2.01.02)	Start On or After	120			03-Apr-18 A	31-Jul-18 A				100%	
05-1200	DCM Static Load Test Proposal (2.2.03)	Start On or After	224			03-Apr-18 A	13-Nov-18 A				100%	
05-1280	Draft plan of 2D/3D modelling works for seawall and breakwater design (2.2.05)	Start On or After	728	31-Mar-20	29-Apr-20	03-May-18 A	29-Apr-20	26-Nov-19	26-Dec-19	-126	80%	
05-2930	Reclamation design (2.2.07)	Start On or After	91			03-Aug-18 A	02-Nov-18 A				100%	
05-2940	Seawall design (2.2.08)	Start On or After	323			11-Apr-18 A	28-Feb-19 A				100%	
05-2950	Breakwater design (2.2.09)	Start On or After	293			02-May-18 A	19-Feb-19 A				100%	
05-2960	Berth design (2.2.10)	Start On or After	342			11-Apr-18 A	19-Mar-19 A				70%	
05-2970	Onshore crane Facility (2.2.11)	Start On or After	135	31-Mar-20	12-Aug-20	31-Mar-20*	12-Aug-20	07-Mar-21	20-Jul-21	341	0%	
05-2980	Onshore vessel power supply system (2.2.12)	Start On or After	135	31-Mar-20	12-Aug-20	31-Mar-20*	12-Aug-20	15-Dec-19	28-Apr-20	-107	0%	
EP_SP_66_12-WP-3-M28.05.01.03	AIP Incineration Plant Buildings (2.3)		961	31-Mar-20	25-Dec-20	10-May-18 A	25-Dec-20	30-Aug-18	26-Jul-22	577		
EP_SP_66_12-WP-3-M28.05.01.03.1	Architectural Design (2.3.00)		740	31-Mar-20	12-Aug-20	04-Aug-18 A	12-Aug-20	15-Dec-20	12-Aug-21	364		
05-1210	Process Building	Start On or After	605	31-Mar-20	29-May-20	03-Oct-18 A	29-May-20	15-Dec-20	13-Feb-21	259	65%	
05-1220	ACC Equipment Structure	Start On or After	135	31-Mar-20	12-Aug-20	31-Mar-20*	12-Aug-20	16-Feb-21	01-Jul-21	322	0%	
05-1230	Turbin Hall Building	Start On or After	410			30-Aug-18 A	14-Oct-19 A				100%	
05-1240	Air Compressor Building	Start On or After	433			30-Aug-18 A	06-Nov-19 A				100%	
05-1250	Chimney and viewing platform	Start On or After	135	31-Mar-20	12-Aug-20	31-Mar-20*	12-Aug-20	28-Jan-21	12-Jun-21	303	0%	
05-1260	Elevated Drive Way and Associated Structures	Start On or After	464			04-Aug-18 A	11-Nov-19 A				100%	
05-1270	Reception Pavilion	Start On or After	665	31-Mar-20	29-May-20	04-Aug-18 A	29-May-20	13-Jun-21	12-Aug-21	439	65%	
EP_SP_66_12-WP-3-M28.05.01.03.2	Foundation design (2.3.01)		252	31-Mar-20	31-Mar-20	23-Jul-19 A	31-Mar-20	02-Jul-21	19-Jun-22	810		
05-3030	Process Building (2 Packages)	Start On or After	0	31-Mar-20	31-Mar-20	31-Mar-20*	31-Mar-20	02-Jul-21	02-Jul-21	458	0%	
05-3040	ACC Equipment Structure	Start On or After	0	31-Mar-20	31-Mar-20	31-Mar-20*	31-Mar-20	18-Oct-21	18-Oct-21	566	0%	
05-3050	Turbin Hall Building	Start On or After	59			23-Jul-19 A	20-Sep-19 A				100%	
05-3060	Air Compressor Building	Start On or After	0	31-Mar-20	31-Mar-20	31-Mar-20*	31-Mar-20	27-Jan-22	27-Jan-22	667	0%	
05-3070	Chimney and viewing platform	Start On or After	0	31-Mar-20	31-Mar-20	31-Mar-20*	31-Mar-20	29-Sep-21	29-Sep-21	547	0%	
05-3080	Elevated Drive Way and Associated Structures Foundation Design	Start On or After	77	31-Mar-20	31-Mar-20	14-Jan-20 A	31-Mar-20	06-Feb-22	06-Feb-22	677	45%	
05-3090	Reception Pavilion	Start On or After	0	31-Mar-20	31-Mar-20	31-Mar-20*	31-Mar-20	19-Jun-22	19-Jun-22	810	0%	
EP_SP_66_12-WP-3-M28.05.01.03.3	Structural design (2.3.02)		487	31-Mar-20	31-Mar-20	30-Nov-18 A	31-Mar-20	14-Nov-20	26-Jul-22	847		
05-1290	Process Building	Start On or After	386	31-Mar-20	31-Mar-20	11-Mar-19 A	31-Mar-20	20-Sep-21	20-Sep-21	538	5%	
05-1300	ACC Equipment Structure	Start On or After	0	31-Mar-20	31-Mar-20	31-Mar-20*	31-Mar-20	14-Nov-20	14-Nov-20	228	0%	
05-1310	Turbin Hall Building	Start On or After	154			30-Nov-18 A	03-May-19 A				100%	
05-1320	Air Compressor Building	Start On or After	98			14-Jun-19 A	20-Sep-19 A				100%	
05-1330	Chimney	Start On or After	305	31-Mar-20	31-Mar-20	31-May-19 A	31-Mar-20	26-Jul-22	26-Jul-22	847	5%	
05-1340	Access Ramp associated structures	Start On or After	237			19-Mar-19 A	11-Nov-19 A				100%	
05-1350	Reception Pavilion Structural Design	Start On or After	101			29-Jul-19 A	07-Nov-19 A				100%	
EP_SP_66_12-WP-3-M28.05.01.03.4	Electrical and Instrumentation works design (2.3.03)		456			10-May-18 A	09-Aug-19 A					
05-3150	11kV/380V Power Transformers and 11kV Earthing Transformer	Start On or After	315			06-Sep-18 A	18-Jul-19 A				100%	
05-3160	E&IC Package 1 (Process Island)	Start On or After	391			10-May-18 A	05-Jun-19 A				100%	
05-3170	E&IC Package 2 (Power Island)	Start On or After	288			25-Oct-18 A	09-Aug-19 A				100%	
05-3175(3)(M12)	E&IC Package 3 (Balance of Plant)	Start On or After	288			25-Oct-18 A	09-Aug-19 A				100%	
EP_SP_66_12-WP-3-M28.05.01.03.8	Operation Management System (2.3.03.04)		721	31-Mar-20	29-Apr-20	10-May-18 A	29-Apr-20	28-Apr-20	10-Sep-20	133		
05-3180	Supervisory Control/Data Acquisition/Distributed Control (SCADA/DCS) System	Start On or After	721	31-Mar-20	29-Apr-20	10-May-18 A	29-Apr-20	28-Apr-20	28-May-20	28	65%	
05-3210	Automatic License Plate and Container Recognition System (ALPCRS)	Start On or After	603	31-Mar-20	29-Apr-20	05-Sep-18 A	29-Apr-20	11-Aug-20	10-Sep-20	133	65%	
EP_SP_66_12-WP-3-M28.05.01.03.5	Mechanical works design (2.3.04)		433			17-May-18 A	24-Jul-19 A					
EP_SP_66_12-WP-3-M28.05.01.03.5.1	Plant and Equipment		419			31-May-18 A	24-Jul-19 A					
05-2800	Weighbridge Systems	Start On or After	152			05-Sep-18 A	04-Feb-19 A				100%	
05-2810	Waste Crane and Grapple System	Start On or After	221			05-Jul-18 A	11-Feb-19 A				100%	
05-2820	Mechanical Shredder	Start On or After	243			23-Nov-18 A	24-Jul-19 A				100%	
05-2830	Incineration System	Start On or After	165			31-May-18 A	12-Nov-18 A				100%	
05-2840	Heat Recovery Boiler	Start On or After	145			08-Jun-18 A	31-Oct-18 A				100%	
05-2850	Boiler Feed Water Systems	Start On or After	68			05-Sep-18 A	12-Nov-18 A				100%	
05-2860	Ash cranes	Start On or After	136			24-Dec-18 A	09-May-19 A				100%	
05-2870	Leachate collection and treatment	Start On or After	73			15-Dec-18 A	26-Feb-19 A				100%	
05-2880	Flue Gas Treatment System	Start On or After	184			11-Jun-18 A	12-Dec-18 A				100%	
05-2890	Boiler ash and APC residue handling and solidification	Start On or After	100			24-Dec-18 A	03-Apr-19 A				100%	
05-2900	Steam Turbine Generator (STG) and Pressure Reducing and Desuperheating Station (PRDS)	Start On or After	325			03-Aug-18 A	24-Jun-19 A				100%	
05-2910	Air cooled condenser	Start On or After	325			03-Aug-18 A	24-Jun-19 A				100%	
05-2915(3)	Closed Circuit Cooling Water System	Start On or After	321			31-Jul-18 A	17-Jun-19 A				100%	
05-2920	Compressed Air Plants	Start On or After	232			04-Jul-18 A	21-Feb-19 A				100%	
EP_SP_66_12-WP-3-M28.05.01.03.5.2	Process Pipeworks (Incl. Ductworks) and Valves		404			24-May-18 A	02-Jul-19 A					
05-1360	Process Island (furnace-boiler-FGC)	Start On or After	224			24-May-18 A	03-Jan-19 A				100%	

Programme for Design and Construction Works
 March 2020 Update (Rev WP-3-M28)

Primary Baseline	Critical Remaining Work	Actual Milestone
WP3 BL Critical Works	Baseline Milestone	Critical Milestone
Remaining Work	WP3 BL Critical Milestone	
Actual Work	Milestone	

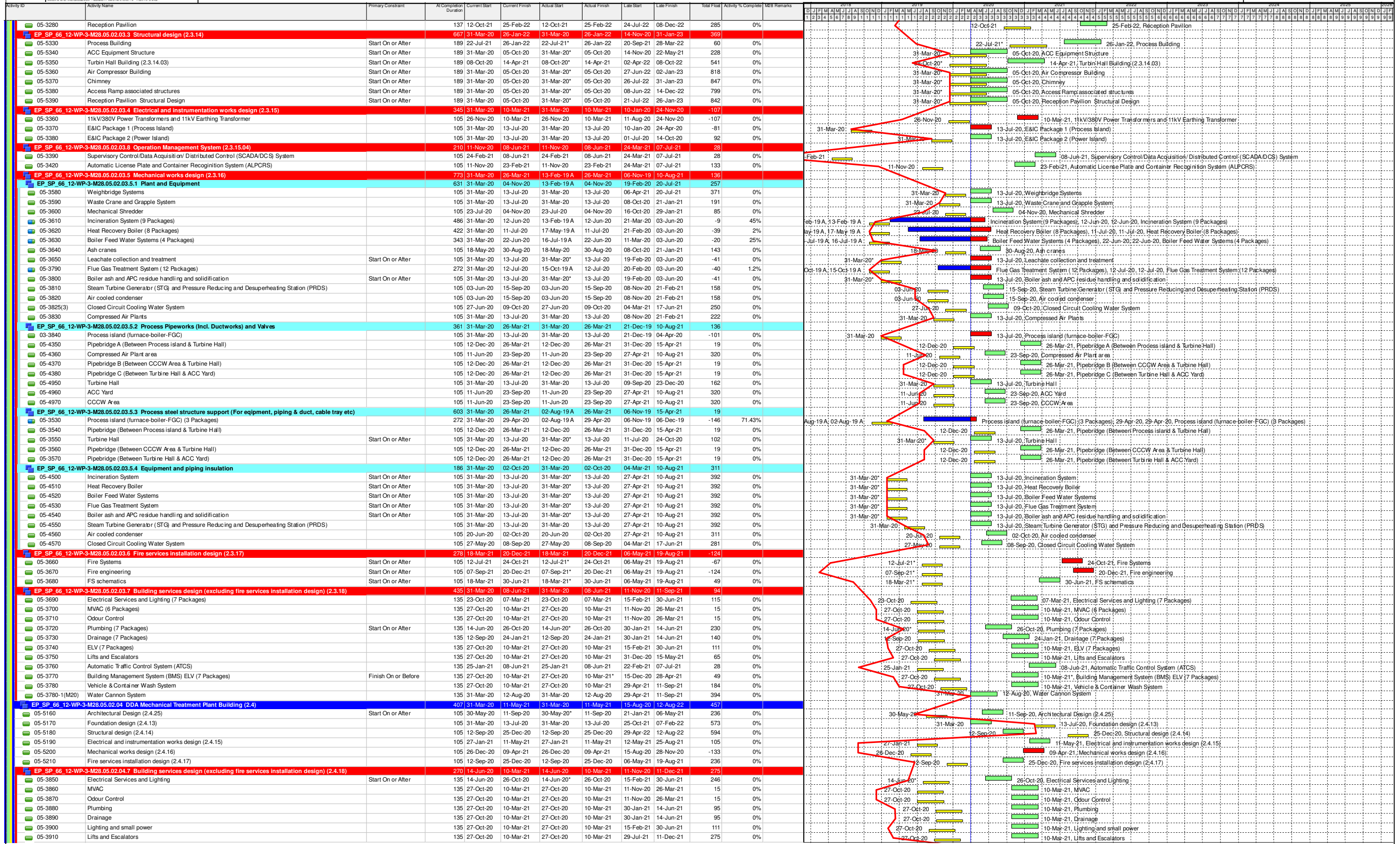
Date	Revision	Checked	Approved
04/12/17	Rev. 0 - 1st Issue		
31-Jan-20	Rev 3 - Jan 2020 Update		
29-Feb-			

Activity ID	Activity Name	Primary Constraint	At Completion Duration	Current Start	Current Finish	Actual Start	Actual Finish	Latest Start	Latest Finish	Total Float	Activity % Complete	M28 Remarks
05-1370	Pipebridge (Between Process Island & Turbine Hall)	Start On or After	404			24-May-18 A	02-Jul-19 A				100%	
05-1380	Compressed Air Plant area	Start On or After	273			02-Oct-18 A	02-Jul-19 A				100%	
05-1390	Pipebridge (Between CCGW Area & Turbine Hall)	Start On or After	119			02-Oct-18 A	29-Jan-19 A				100%	
05-1400	Pipebridge (Between Turbine Hall & ACC Yard)	Start On or After	119			02-Oct-18 A	29-Jan-19 A				100%	
05-1410	Turbine Hall	Start On or After	273			02-Oct-18 A	02-Jul-19 A				100%	
05-1420	ACC Yard	Start On or After	273			02-Oct-18 A	02-Jul-19 A				100%	
05-1540	CCGW Area	Start On or After	273			02-Oct-18 A	02-Jul-19 A				100%	
EP_SP_66_12-WP-3-M28.05.01.03.5.3	Process steel structure support (For equipment, piping & duct, cable tray etc)		257			17-May-18 A	29-Jan-19 A					
05-3100	Process island (furnace-boiler-FGC)	Start On or After	246			17-May-18 A	18-Jan-19 A				100%	
05-3110	Pipebridge (Between Process Island & Turbine Hall)	Start On or After	112			09-Oct-18 A	29-Jan-19 A				100%	
05-3120	Turbine Hall	Start On or After	112			09-Oct-18 A	29-Jan-19 A				100%	
05-3130	Pipebridge (Between CCGW Area & Turbine Hall)	Start On or After	112			09-Oct-18 A	29-Jan-19 A				100%	
05-3140	Pipebridge (Between Turbine Hall & ACC Yard)	Start On or After	112			09-Oct-18 A	29-Jan-19 A				100%	
EP_SP_66_12-WP-3-M28.05.01.03.5.4	Equipment and piping insulation		391			15-Jun-18 A	11-Jul-19 A					
05-1430	Incineration System	Start On or After	150			15-Jun-18 A	12-Nov-18 A				100%	
05-1440	Heat Recovery Boiler	Start On or After	138			15-Jun-18 A	31-Oct-18 A				100%	
05-1450	Boiler Feed Water Systems	Start On or After	150			15-Jun-18 A	12-Nov-18 A				100%	
05-1460	Flue Gas Treatment System	Start On or After	180			15-Jun-18 A	12-Dec-18 A				100%	
05-1470	Boiler ash and APC residue handling and solidification	Start On or After	292			15-Jun-18 A	03-Apr-19 A				100%	
05-1480	Steam Turbine Generator (STG) and Pressure Reducing and Desuperheating Station (PRDS)	Start On or After	181			11-Jan-19 A	11-Jul-19 A				100%	
05-1490	Air cooled condenser	Start On or After	251			02-Nov-18 A	11-Jul-19 A				100%	
05-1500	Closed Circuit Cooling Water System	Start On or After	321			31-Jul-18 A	17-Jun-19 A				100%	
EP_SP_66_12-WP-3-M28.05.01.03.6	Fire services installation design (2.3.05)		729	31-Mar-20	25-Dec-20	28-Dec-18 A	25-Dec-20	30-Aug-18	10-Jun-20	-198		
EP_SP_66_12-WP-3-M28.05.01.03.6.1	Process Building (2.3.05.01)		626	31-Mar-20	26-Sep-20	10-Jan-19 A	26-Sep-20	10-Apr-19	07-Oct-19	-355		
05-1510	Fire Systems	Finish On or Before	569	01-Aug-20	01-Aug-20	10-Jan-19 A	01-Aug-20	07-Oct-19	07-Oct-19	-298	5%	
05-1520	Fire engineering	Finish On or Before	180	31-Mar-20	26-Sep-20	31-Mar-20	26-Sep-20	10-Apr-19	06-Oct-19	-356	0%	
05-1530	FS schematics	Finish On or Before	453	31-Mar-20	06-Apr-20	10-Jan-19 A	06-Apr-20	01-Oct-19	07-Oct-19	-182	5%	
EP_SP_66_12-WP-3-M28.05.01.03.6.3	Turbin Hall Building (2.3.05.03)		729	31-Mar-20	25-Dec-20	28-Dec-18 A	25-Dec-20	17-Apr-19	11-Jan-20	-349		
05-5400	Fire Systems (2.3.05.03.01)	Finish On or Before	564	31-Mar-20	13-Jul-20	28-Dec-18 A	13-Jul-20	22-Jun-19	04-Oct-19	-283	25%	
05-5410 (M22)	Fire engineering	Finish On or Before	270	31-Mar-20	25-Dec-20	31-Mar-20	25-Dec-20	17-Apr-19	11-Jan-20	-349	0%	
05-5420 (M22)	FS schematics (2.3.05.03.03)	Finish On or Before	564	31-Mar-20	13-Jul-20	28-Dec-18 A	13-Jul-20	22-Jun-19	04-Oct-19	-283	25%	
EP_SP_66_12-WP-3-M28.05.01.03.6.4	Air Compressor Building (2.3.05.04)		270	31-Mar-20	25-Dec-20	31-Mar-20	25-Dec-20	30-Aug-18	26-May-19	-579		
05-5430 (M22)	Fire Systems	Finish On or Before	270	31-Mar-20	25-Dec-20	31-Mar-20	25-Dec-20	30-Aug-18	26-May-19	-579	0%	
05-5440 (M22)	FS schematics	Finish On or Before	270	31-Mar-20	25-Dec-20	31-Mar-20	25-Dec-20	30-Aug-18	26-May-19	-579	0%	
EP_SP_66_12-WP-3-M28.05.01.03.6.5	Elevated Drive Way and Associated Structures (2.3.05.05)		255	31-Mar-20	26-Aug-20	16-Dec-19 A	26-Aug-20	29-Oct-19	25-Mar-20	-154		
05-5445 (M22)	Fire Systems	Finish On or Before	255	31-Mar-20	26-Aug-20	16-Dec-19 A	26-Aug-20	29-Oct-19	25-Mar-20	-154	5%	
05-5450 (M22)	FS schematics	Finish On or Before	255	31-Mar-20	26-Aug-20	16-Dec-19 A	26-Aug-20	29-Oct-19	25-Mar-20	-154	5%	
EP_SP_66_12-WP-3-M28.05.01.03.6.6	Reception Pavilion (2.3.05.06)		357	31-Mar-20	24-Sep-20	04-Oct-19 A	24-Sep-20	16-Dec-19	10-Jun-20	-106		
05-5460 (M22)	Fire Systems (2.3.05.06.01)	Finish On or Before	356	31-Mar-20	23-Sep-20	04-Oct-19 A	23-Sep-20	17-Dec-19	10-Jun-20	-105	5%	
05-5470 (M22)	FS schematics (2.3.05.06.03)	Finish On or Before	357	31-Mar-20	24-Sep-20	04-Oct-19 A	24-Sep-20	16-Dec-19	10-Jun-20	-106	5%	
EP_SP_66_12-WP-3-M28.05.01.03.6.7	Compressor & Closed Circuit (2.3.05.07)		307	31-Mar-20	13-Jul-20	11-Sep-19 A	13-Jul-20	13-Oct-19	25-Jan-20	-170		
05-5480 (M22)	Fire Systems (2.3.05.07.01)	Finish On or Before	307	31-Mar-20	13-Jul-20	11-Sep-19 A	13-Jul-20	13-Oct-19	25-Jan-20	-170	45%	
05-5490 (M22)	FS schematics (2.3.05.07.03)	Finish On or Before	307	31-Mar-20	13-Jul-20	11-Sep-19 A	13-Jul-20	13-Oct-19	25-Jan-20	-170	45%	
EP_SP_66_12-WP-3-M28.05.01.03.7	Building services design (excluding fire services installation design) (2.3.05)		764	31-Mar-20	12-Aug-20	11-Jul-18 A	12-Aug-20	19-May-20	29-Apr-21	259		
05-1550	Electrical Services and Lighting (7 Packages)	Start On or After	574	31-Mar-20	09-Aug-20	10-Jan-19 A	09-Aug-20	23-Jul-20	02-Dec-20	115	12.5%	
05-1560	MVAC (6 Packages)	Start On or After	476	31-Mar-20	29-Apr-20	10-Jan-19 A	29-Apr-20	12-Oct-20	11-Nov-20	195	5%	
05-1570	Odour Control	Start On or After	719	31-Mar-20	28-Jun-20	11-Jul-18 A	28-Jun-20	13-Aug-20	11-Nov-20	135	5%	
05-1580	Plumbing (7 Packages)	Start On or After	441	31-Mar-20	31-Mar-20	15-Jan-19 A	31-Mar-20	16-Nov-20	16-Nov-20	230	5%	
05-1590	Drainage (7 Packages)	Start On or After	531	31-Mar-20	28-Jun-20	15-Jan-19 A	28-Jun-20	18-Aug-20	16-Nov-20	140	5%	
05-1600	ELV (7 Packages)	Start On or After	536	31-Mar-20	28-Jun-20	10-Jan-19 A	28-Jun-20	17-Nov-20	15-Feb-21	231	5%	
05-1610	Lifts and Escalators (2 Packages)	Start On or After	227	31-Mar-20	12-Aug-20	30-Dec-19 A	12-Aug-20	04-Jun-20	17-Oct-20	65	5%	
05-1630	Building Management System (BMS) (7 Packages)	Start On or After	135	31-Mar-20	12-Aug-20	31-Mar-20	12-Aug-20	19-May-20	30-Sep-20	49	0%	
05-1770	Vehicle & Container Wash System	Start On or After	135	31-Mar-20	12-Aug-20	31-Mar-20	12-Aug-20	01-Oct-20	13-Feb-21	184	0%	
05-1770-1(M20)	Water Cannon System	Start On or After	294	31-Mar-20	31-Mar-20	11-Jun-19 A	31-Mar-20	29-Apr-21	29-Apr-21	394	5%	
EP_SP_66_12-WP-3-M28.05.01.04	AIP Mechanical Treatment Plant Building (2.4)		706	31-Mar-20	12-Aug-20	07-Sep-18 A	12-Aug-20	19-Nov-19	25-Oct-21	438		
05-1640	Architectural Design (2.4.00)		631	31-Mar-20	29-May-20	07-Sep-18 A	29-May-20	22-Nov-20	21-Jan-21	236	65%	
05-1650	Foundation design (2.4.01)	Start On or After	268	31-Mar-20	31-Mar-20	07-Jul-19 A	31-Mar-20	25-Oct-21	25-Oct-21	573	65%	
05-1660	Structural design (2.4.02)	Start On or After	206			21-May-19 A	13-Dec-19 A				100%	
05-1670	Electrical and instrumentation works design (2.4.03)	Start On or After	105	31-Mar-20	13-Jul-20	31-Mar-20	13-Jul-20	14-Jul-20	27-Oct-20	105	0%	
05-1680	Mechanical works design (2.4.04)	Start On or After	105	31-Mar-20	13-Jul-20	31-Mar-20	13-Jul-20	19-Nov-19	03-Mar-20	-133	0%	
05-1690	Fire services installation design (2.4.05) (3 Packages)	Start On or After	472	31-Mar-20	04-Jul-20	20-Mar-19 A	04-Jul-20	31-Jan-21	06-May-21	306	9.5%	
EP_SP_66_12-WP-3-M28.05.01.04.7	Building services design (excluding fire services installation design) (2.4.06)		512	31-Mar-20	12-Aug-20	20-Mar-19 A	12-Aug-20	15-Apr-20	15-May-21	275		
05-1700	Electrical Services and Lighting (2.4.06.01)	Start On or After	377	31-Mar-20	31-Mar-20	20-Mar-19 A	31-Mar-20	02-Dec-20	02-Dec-20	246	5%	
05-1710	MVAC	Start On or After	507	31-Mar-20	12-Aug-20	25-Mar-19 A	12-Aug-20	15-Apr-20	28-Aug-20	15	5%	
05-1720	Odour Control	Start On or After	135	31-Mar-20	12-Aug-20	31-Mar-20	12-Aug-20	15-Apr-20	28-Aug-20	15	0%	
05-1730	Plumbing	Start On or After	512	31-Mar-20	12-Aug-20	20-Mar-19 A	12-Aug-20	04-Jul-20	16-Nov-20	95	5%	
05-1740	Drainage	Start On or After	512	31-Mar-20	12-Aug-20	20-Mar-19 A	12-Aug-20	04-Jul-20	16-Nov-20	95	5%	
05-1750	ELV	Start On or After	512	31-Mar-20	12-Aug-20	20-Mar-19 A	12-Aug-20	20-Jul-20	02-Dec-20	111	5%	
05-1760	Lifts and Escalators	Start On or After	227	31-Mar-20	12-Aug-20	30-Dec-19 A	12-Aug-20	31-Dec-20	15-May-21	275	5%	
05-1760-1(M20)	Building Management System (BMS)	Start On or After	89	31-Mar-20	27-Jun-20	31-Mar-20	27-Jun-20	04-Jul-20	30-Sep-20	95	0%	
EP_SP_66_12-WP-3-M28.05.01.05	AIP Wastewater Treatment Plant (2.5)		715	31-Mar-20	16-Sep-20	03-Oct-18 A	16-Sep-20	15-Apr-20	04-Jul-21	230		
05-1780	Architectural Design (2.5.00)	Start On or After	605	31-Mar-20	29-May-20	03-Oct-18 A	29-May-20	26-Dec-20	24-Feb-21	270	65%	
05-1790	Foundation design (2.5.01)	Start On or After	0	31-Mar-20	31-Mar-20	31-Mar-20	31-Mar-20	04-Jul-21	04-Jul-21	460	0%	
05-1800	Structural design (2.5.02)	Start On or After	556	31-Mar-20	16-Sep-20	11-Mar-19 A	16-Sep-20	30-May-20	16-Nov-20	60	45%	
05-1810	Electrical and instrumentation works design (2.5.03)	Start On or After	289			24-Oct-18 A	09-Aug-19 A				100%	
05-1820	Mechanical works design (2.5.04)	Start On or After	282			03-Oct-18 A	12-Jul-19 A				100%	
05-2790	Fire services installation design (2.5.05)	Start On or After	530	31-Mar-20	28-Jun-20	16-Jan-19 A	28-Jun-20	05-Feb-21	06-May-21	311	5%	
EP_SP_66_12-WP-3-M28.05.01.05.7	Building services design (excluding fire services installation design) (2.5.06)		575	31-Mar-20	12-Aug-20	16-Jan-19 A	12-Aug-20	15-Apr-20	02-Dec-20	111		
05-1830	Electrical Services and Lighting for Wastewater Treatment Plant Building (2.5.06.01)	Start On or After	470	31-Mar-20	29-Apr-20	16-Jan-19 A	29-Apr-20	02-Nov-20	02-Dec-20	216	25%	
05-1840	MVAC (2.5.06.02)	Start On or After	560	31-Mar-20	28-Jul-20	16-Jan-19 A	28-Jul-20	30-Apr-20	28-Aug-20	30	25%	
05-1850	Odour Control (2.5.06.03)	Start On or After	135	31-Mar-20	12-Aug-20	31-Mar-20	12-Aug-20	15-Apr-20	28-Aug-20	15	0%	
05-1860	Plumbing (2.5.06.04)	Start On or After	560	31-Mar-20	28-Jul-20	16-Jan-19 A	28-Jul-20	19-Jul-20	16-Nov-20	110	25%	
05-1870	Drainage (2.5.06.05)	Start On or After	560	31-Mar-20	28-Jul-20	16-Jan-19 A	28-Jul-20	19-Jul-20	16-Nov-20	110	25%	
05-1880	ELV (2.5.06.06)	Start On or After	560	31-Mar-20	28-Jul-20	16-Jan-19 A	28-Jul-20	04-Aug-20	02-Dec-20	126	25%	
EP_SP_66_12-WP-3-M28.05.01.06	AIP Desalination Plant Building (2.6)		706	31-Mar-20	12-Aug-20	07-Sep-18 A						

Activity ID	Activity Name	Primary Constraint	At Completion Duration	Current Start	Current Finish	Actual Start	Actual Finish	Latest Start	Latest Finish	Total Float	Activity % Complete	M28 Remarks
05-1920	Structural design (2.6.02)	Start On or After	206			21-May-19 A	13-Dec-19 A				100%	
05-1930	Electrical and instrumentation works design (2.6.03)	Start On or After	289			24-Oct-18 A	09-Aug-19 A				100%	
05-1940	Mechanical works design (2.6.04)	Start On or After	195			30-Nov-18 A	13-Jun-19 A				100%	
05-1950	Fire services installation design (2.6.05) (3 Packages)	Start On or After	462	31-Mar-20	24-Jun-20	20-Mar-19 A	24-Jun-20	09-Feb-21	06-May-21	316	19%	
EP_SP_66_12-WP-3-M28.05.01.06.7 Building services design (excluding fire services installation design) (2.6.06)												
05-1960	Electrical Services and Lighting (2.6.06.01)	Start On or After	512	31-Mar-20	12-Aug-20	20-Mar-19 A	12-Aug-20	15-Apr-20	02-Dec-20	111	5%	
05-1970	MVAC	Start On or After	507	31-Mar-20	12-Aug-20	25-Mar-19 A	12-Aug-20	15-Apr-20	28-Aug-20	15	5%	
05-1980	Odour Control	Start On or After	135	31-Mar-20	12-Aug-20	31-Mar-20*	12-Aug-20	15-Apr-20	28-Aug-20	15	0%	
05-1990	Plumbing	Start On or After	512	31-Mar-20	12-Aug-20	20-Mar-19 A	12-Aug-20	04-Jul-20	16-Nov-20	95	5%	
05-2000	Drainage	Start On or After	512	31-Mar-20	12-Aug-20	20-Mar-19 A	12-Aug-20	04-Jul-20	16-Nov-20	95	5%	
05-2010	ELV	Start On or After	512	31-Mar-20	12-Aug-20	20-Mar-19 A	12-Aug-20	20-Jul-20	02-Dec-20	111	5%	
EP_SP_66_12-WP-3-M28.05.01.07 AIP Administration Building (2.7)												
05-2020	Architectural Design (2.7.00)	Start On or After	666	31-Mar-20	29-May-20	03-Aug-18 A	29-May-20	23-Oct-20	22-Dec-20	206	65%	
05-2030	Foundation design (2.7.01)	Start On or After	142			30-Sep-19 A	19-Feb-20 A				100%	
05-2040	Structural design (2.7.02)	Start On or After	446	31-Mar-20	16-Oct-20	29-Jul-19 A	16-Oct-20	09-Oct-21	27-Apr-22	557	65%	
05-2050	Electrical and instrumentation works design (2.7.03)	Start On or After	135	31-Mar-20	12-Aug-20	31-Mar-20*	12-Aug-20	04-Oct-20	16-Feb-21	187	0%	
05-2060	Fire services installation design (3 Packages) (2.7.04)	Start On or After	332	31-Mar-20	31-Jul-20	03-Sep-19 A	31-Jul-20	04-Dec-20	06-Apr-21	249	9.5%	
EP_SP_66_12-WP-3-M28.05.01.07.6 Building services design (excluding fire services installation design) (2.7.05)												
05-2070	Electrical Services and Lighting (2.7.05.01)	Start On or After	345	31-Mar-20	12-Aug-20	03-Sep-19 A	12-Aug-20	15-Apr-20	02-Dec-20	111	5%	
05-2080	MVAC	Start On or After	345	31-Mar-20	12-Aug-20	03-Sep-19 A	12-Aug-20	15-Apr-20	28-Aug-20	15	5%	
05-2090	Odour Control	Start On or After	135	31-Mar-20	12-Aug-20	31-Mar-20*	12-Aug-20	15-Apr-20	28-Aug-20	15	0%	
05-2100	Plumbing	Start On or After	345	31-Mar-20	12-Aug-20	03-Sep-19 A	12-Aug-20	04-Jul-20	16-Nov-20	95	5%	
05-2110	Drainage	Start On or After	345	31-Mar-20	12-Aug-20	03-Sep-19 A	12-Aug-20	04-Jul-20	16-Nov-20	95	5%	
05-2120	ELV	Start On or After	345	31-Mar-20	12-Aug-20	03-Sep-19 A	12-Aug-20	20-Jul-20	02-Dec-20	111	5%	
05-2130	Lifts and Escalators	Start On or After	227	31-Mar-20	12-Aug-20	30-Dec-19 A	12-Aug-20	04-Jun-20	17-Oct-20	65	5%	
05-2130-1(M20)	Building Management System (BMS)	Start On or After	89	31-Mar-20	27-Jun-20	31-Mar-20*	27-Jun-20	04-Jul-20	30-Sep-20	95	0%	
EP_SP_66_12-WP-3-M28.05.01.08 AIP IWMF Substation (2.8)												
05-2140	Architectural Design (2.8.00)	Start On or After	437			03-Aug-18 A	14-Oct-19 A				100%	
05-2150	Foundation design (2.8.01)	Start On or After	124			17-May-19 A	18-Sep-19 A				100%	
05-2160	Structural design (2.8.02)	Start On or After	168			31-Oct-18 A	17-Apr-19 A				100%	
05-2170	Electrical and instrumentation works design (2.8.03) (14 Packages)	Start On or After	245	31-Mar-20	25-Jun-20	25-Oct-19 A	25-Jun-20	02-Jul-20	27-Sep-20	93	51.67%	
05-2180	Mechanical works design (2.8.04)	Start On or After	135	31-Mar-20	12-Aug-20	31-Mar-20*	12-Aug-20	01-Mar-20	14-Jul-20	-30	0%	
05-2190	Fire services installation design (2.8.05) (2 Packages)	Start On or After	612	31-Mar-20	30-Jul-20	27-Nov-18 A	30-Jul-20	21-Sep-20	21-Jan-21	174	28.5%	
EP_SP_66_12-WP-3-M28.05.01.08.7 Building services design (excluding fire services installation design) (2.8.06)												
05-2200	Electrical Services and Lighting (2.8.06.01)	Start On or After	591	31-Mar-20	09-Jul-20	27-Nov-18 A	09-Jul-20	19-May-20	02-Dec-20	145	36%	
05-2210	MVAC	Start On or After	576	31-Mar-20	25-Jun-20	27-Nov-18 A	25-Jun-20	06-Sep-20	02-Dec-20	160	36%	
05-2220	Plumbing	Start On or After	591	31-Mar-20	09-Jul-20	27-Nov-18 A	09-Jul-20	07-Aug-20	16-Nov-20	129	65%	
05-2230	Drainage	Start On or After	387	31-Mar-20	28-Jun-20	27-Nov-18 A	28-Jun-20	03-Sep-20	02-Dec-20	156	65%	
05-2240	ELV	Start On or After	580	31-Mar-20	28-Jun-20	27-Nov-18 A	28-Jun-20	03-Sep-20	02-Dec-20	156	65%	
05-2240-1(M20)	Building Management System (BMS)	Start On or After	89	31-Mar-20	27-Jun-20	31-Mar-20*	27-Jun-20	03-Jul-20	29-Sep-20	94	0%	
EP_SP_66_12-WP-3-M28.05.01.09 AIP Air Quality Monitoring Stations (2.9)												
05-2250	Design of the Air Quality Monitoring Stations (2.9.01)	Start On or After	120	31-Mar-20	28-Jul-20	31-Mar-20*	28-Jul-20	06-Jul-20	03-Nov-20	97	0%	
EP_SP_66_12-WP-3-M28.05.01.10 AIP Roads and Utilities (2.10)												
EP_SP_66_12-WP-3-M28.05.01.10.1 Permanent road works layout on the Artificial Island (2.10.01)												
05-2260	Roads and hardstandings layout	Start On or After	135	17-Dec-20	30-Apr-21	17-Dec-20*	30-Apr-21	26-Aug-22	07-Jun-23	767	0%	
05-2270	Road signage and markings	Start On or After	135	17-Dec-20	30-Apr-21	17-Dec-20*	30-Apr-21	23-Jan-23	07-Jun-23	767	0%	
EP_SP_66_12-WP-3-M28.05.01.10.2 Sewerage design on the Artificial Island (2.10.02)												
05-2280	Foul Sewerage concept sizing	Start On or After	330	31-Mar-20	12-Aug-20	18-Sep-19 A	12-Aug-20	03-Aug-20	30-Jan-22	535	65%	
05-2290	Contaminated Sewerage concept / sizing	Start On or After	330	31-Mar-20	12-Aug-20	18-Sep-19 A	12-Aug-20	17-Sep-21	30-Jan-22	535	65%	
EP_SP_66_12-WP-3-M28.05.01.10.3 Drainage system design on the Artificial Island (2.10.03)												
05-2300	Surface Water Drainage System concept / sizing	Start On or After	449	31-Mar-20	12-Aug-20	22-May-19 A	12-Aug-20	03-Aug-20	16-Dec-20	125	65%	
05-2310	First Flush Drainage System concept / sizing	Start On or After	449	31-Mar-20	12-Aug-20	22-May-19 A	12-Aug-20	21-Nov-20	05-Apr-21	235	65%	
EP_SP_66_12-WP-3-M28.05.01.10.4 Water supply system design on the Artificial Island (2.10.04)												
05-2320	Potable Water Distribution System (2.10.04.01)	Start On or After	349	31-Mar-20	12-Aug-20	30-Aug-19 A	12-Aug-20	30-Nov-19	01-Mar-22	565	5%	
05-2330	Recycled Water System (2.10.04.02)	Start On or After	272	31-Mar-20	12-Aug-20	14-Nov-19 A	12-Aug-20	28-Aug-21	10-Jan-22	515	5%	
05-2340	Irrigation System (2 Packages) (2.10.04.03)	Start On or After	135	31-Mar-20	12-Aug-20	31-Mar-20*	12-Aug-20	03-Aug-20	16-Dec-20	125	0%	
05-2350	Rainwater harvesting System (2.10.04.04)	Start On or After	135	31-Mar-20	12-Aug-20	31-Mar-20*	12-Aug-20	03-Aug-20	16-Dec-20	125	0%	
05-2360	Water Tanks (2.10.04.05)	Start On or After	135	31-Mar-20	12-Aug-20	31-Mar-20*	12-Aug-20	17-Oct-21	01-Mar-22	565	0%	
05-2370	External FS Systems (2.10.04.06)	Start On or After	283	31-Mar-20	12-Aug-20	04-Nov-19 A	12-Aug-20	17-Oct-21	01-Mar-22	565	5%	
05-2370-1(M24)	E&M system for seawater intake and brine discharge (2.10.04.07)	Finish On or Before	307	31-Mar-20	01-Jul-20	30-Aug-19 A	01-Jul-20*	30-Nov-19	01-Mar-20	-122	5%	
05-2370-2(M24)	Building Services system for seawater intake and brine discharge (2.10.04.09)	Finish On or Before	88	31-Mar-20	26-Jun-20	31-Mar-20	26-Jun-20*	30-Nov-19	25-Feb-20	-122	0%	
EP_SP_66_12-WP-3-M28.05.01.10.6 Design of telecommunication and other utilities (2.10.06)												
05-2380	Power Distribution System concept / schematics	Start On or After	135	31-Mar-20	12-Aug-20	31-Mar-20*	12-Aug-20	31-Dec-20	15-May-21	275	0%	
05-2390	Site Lighting Concept / Schematics	Start On or After	239	31-Mar-20	12-Aug-20	18-Dec-19 A	12-Aug-20	26-Jan-20	09-Jun-20	-65	5%	
05-2400	Lightning Protection System concept / schematics	Start On or After	239	31-Mar-20	12-Aug-20	18-Dec-19 A	12-Aug-20	13-Aug-20	26-Dec-20	135	5%	
05-2410	Site ELV Network System - Communications System concept / schematics	Start On or After	135	31-Mar-20	12-Aug-20	31-Mar-20*	12-Aug-20	31-Dec-20	15-May-21	275	0%	
05-2420	Site ELV Network System - Security Systems concept / schematics	Start On or After	135	31-Mar-20	12-Aug-20	31-Mar-20*	12-Aug-20	31-Dec-20	15-May-21	275	0%	
05-2430	Site ELV Network System - Navigation aids concept / schematics	Start On or After	135	31-Mar-20	12-Aug-20	31-Mar-20*	12-Aug-20	31-Dec-20	15-May-21	275	0%	
05-2440	Microwave transmission of FS direct link (2.10.06.07)	Start On or After	580	31-Mar-20	28-Jun-20	27-Nov-18 A	28-Jun-20	14-Feb-21	15-May-21	320	45%	
05-2450	Fuel Handling System concept / schematics (2.10.06.08)	Start On or After	202	31-Mar-20	12-Aug-20	24-Jan-20 A	12-Aug-20	10-Sep-22	23-Jan-23	893	0%	
05-3190	Computerised Maintenance Management System (CMMS)	Start On or After	380	31-Mar-20	13-Jul-20	30-Jun-19 A	13-Jul-20	28-May-20	10-Sep-20	58	0%	
05-3200	Information and Document Management System (IDMS)	Start On or After	448	31-Mar-20	13-Jul-20	23-Apr-19 A	13-Jul-20	28-May-20	10-Sep-20	58	0%	
05-3840 (M22)	Automatic Traffic Control System (ATCS)	Start On	300	31-Mar-20	24-Jan-21	31-Mar-20*	24-Jan-21	18-Dec-19	12-Oct-20	-104	0%	
EP_SP_66_12-WP-3-M28.05.01.10.7 Utility ducts/Pipebridges design (2.10.25)												
05-2460	Design of Pipe / Utilities Trenches concept	Start On or After	135	30-May-21	11-Oct-21	30-May-21*	11-Oct-21	19-Dec-22	03-May-23	568	0%	
05-2470	Utility ducts network	Start On or After	135	31-Mar-20	12-Aug-20	31-Mar-20*	12-Aug-20	19-Apr-20	01-Sep-20	19	0%	
05-2480	Pipebridge network - Layout	Start On or After	120	31-Mar-20	28-Jul-20	31-Mar-20*	28-Jul-20	04-May-20	01-Sep-20	34	0%	
05-2490	Pipebridge network - Foundation Plan	Start On or After	135	31-Mar-20	12-Aug-20	31-Mar-20*	12-Aug-20	19-Apr-20	01-Sep-20	19	0%	
05-2500	Pipebridge network - Structure Plan	Start On or After	135	31-Mar-20	12-Aug-20	31-Mar-20*	12-Aug-20	19-Apr-20	01-Sep-20	19	0%	
EP_SP_66_12-WP-3-M28.05.01.11 AIP Architectural, Finishes and Landscaping Works (2.11)												
EP_SP_66_12-WP-3-M28.05.01.11.1 External and internal finishes design for Incineration Plant Buildings (2.11.01)												
05-2510	External and internal finishes design for Incineration Plant Building (6 Packages)	Start On or After	137	31-Mar-20	14-Aug-20	31-Mar-20*	14-Aug-20	28-Jun-21	12-Nov-21	454	0%	
05-2520	External and internal finishes design for ACC Equipment Structure	Start On or After	137	31-Mar-20	14-Aug-20	31-Mar-20*	14-Aug-20	28-Jun-21	12-Nov-21	454	0%	
05-2530	External and internal finishes design for Turbine Hall Building (3 Packages)	Start On or After	137	31-Mar-20	14-Aug-20	31-Mar-20*	14-Aug-20	26-Sep-21	10-Feb-22	544	0%	
05-2540	External and internal finishes design for Air Compressor Building (3 Packages)	Start On or After	137	31-Mar-20	14-Aug-20	31-Mar-20*	14-Aug-20	24-Aug-21	08-Jan-22	511	0%	
05-2550	External and internal finishes design for Chimney (6 Packages)	Start On or After	137	31-Mar-20	14-Aug-20	31-Mar-20*	14-Aug-20	27-Aug-21	11-Jan-22	514	0%	
05-2560	External and internal finishes design for Reception Pavilion (5 Packages)	Start On or After	137	31-Mar-20	14-Aug-20	31-Mar-20*	14-Aug-20	27-Aug-21	11-Jan-22	514	0%	
EP_SP_66_12-WP-3-M28.05.01.11.2 External and internal finishes design for MT Plant Building (2.11.02)												
05-2570	External and internal finishes design for MT Plant Building (2.11.02)	Start On or After	136	31-Mar-20	13-Aug-20	31-Mar-20	13-Aug-20	13-Jun-21	27-Oct-21	439	0%	

Date	Revision	Checked	Approved
04/12/17	Rev. 0 - 1st Issue		
31-Jan-20	Rev 3 - Jan 2020 Update		
29-Feb-20	Rev 3 - Feb 2020 Update		
30-Mar-20	Rev 3 - Mar 2020 Update		

Primary Baseline	Critical Remaining Work
------------------	-------------------------



Primary Baseline	Critical Remaining Work	Actual Milestone
WP3 BL Critical Works	Baseline Milestone	Critical Milestone
Remaining Work	WP3 BL Critical Milestone	
Actual Work	Milestone	

Date	Revision	Checked	Approved
04/12/17	Rev. 0 - 1st Issue		
31-Jan-20	Rev 3 - Jan 2020 Update		
29-Feb-20	Rev 3 - Feb 2020 Update		
30-Mar-20	Rev 3 - Mar 2020 Update		

Activity ID	Activity Name	Primary Constraint	At Completion Duration	Current Start	Current Finish	Actual Start	Actual Finish	Latest Start	Latest Finish	Total Float	Activity % Complete	M28 Remarks
07-2720(1)	IEC review and comment of Coral Monitoring Plan		4			21-Apr-18 A	25-Apr-18 A				100%	21-Apr-18 A IEC review and comment of Coral Monitoring Plan, 25-Apr-18 A
07-2730(1)	AFCD Review and approval of Coral Monitoring Plan		11			14-May-18 A	25-May-18 A				100%	14-May-18 A AFCD Review and approval of Coral Monitoring Plan, 25-May-18 A
07-2740(1)	Submission to EPD-EAD Coral Monitoring Plan		0			28-May-18 A	28-May-18 A				100%	28-May-18 A Submission to EPD-EAD Coral Monitoring Plan, 28-May-18 A
EP_SP_66_12-WP-3-M28.07.5 Baseline Monitoring Information and Report												
07-2680(1)	Compilation of Final Baseline Monitoring Report		3			29-May-18 A	01-Jun-18 A				100%	29-May-18 A Compilation of Final Baseline Monitoring Report, 01-Jun-18 A
07-2690(1)	IEC review and certification of Final baseline monitoring report		5			02-Jun-18 A	07-Jun-18 A				100%	02-Jun-18 A IEC review and certification of Final baseline monitoring report, 07-Jun-18 A
07-2700(1)	Submission to EPD-EAD Final Baseline Monitoring Report		1			13-Jun-18 A	14-Jun-18 A				100%	13-Jun-18 A Submission to EPD-EAD Final Baseline Monitoring Report, 14-Jun-18 A
EP_SP_66_12-WP-3-M28.07.4 Baseline Air Quality Monitoring Works												
07-1220	Carry out baseline Air Quality monitoring at Portion 3		365	04-Jul-22	03-Jul-23	04-Jul-22	03-Jul-23	09-Oct-22	09-Oct-23		97%	04-Jul-22 Carry out baseline Air Quality monitoring at Portion 3, 03-Jul-23 Carry out baseline Air Quality monitoring at Portion 3
07-1230	Carry out baseline Air Quality monitoring at Portion 4		365	04-Jul-22	03-Jul-23	04-Jul-22	03-Jul-23	09-Oct-22	09-Oct-23		97%	04-Jul-22 Carry out baseline Air Quality monitoring at Portion 4, 03-Jul-23 Carry out baseline Air Quality monitoring at Portion 4
07-1240	Carry out baseline Air Quality monitoring at Portion 5		365	04-Jul-22	03-Jul-23	04-Jul-22	03-Jul-23	09-Oct-22	09-Oct-23		97%	04-Jul-22 Carry out baseline Air Quality monitoring at Portion 5, 03-Jul-23 Carry out baseline Air Quality monitoring at Portion 5
EP_SP_66_12-WP-3-M28.08 Maritime Works												
EP_SP_66_12-WP-3-M28.08.3 Submissions												
08-900	Submission of Particulars for DCM Works Installations	Mandatory Start	47			29-Jan-18 A	19-Dec-18 A				100%	29-Jan-18 A Submission of Particulars for DCM Works Installations, 19-Dec-18 A
08-910	Submission of Particulars for DCM Barges/Equipment	Mandatory Start	65			23-May-18 A	27-Jul-18 A				50%	23-May-18 A Submission of Particulars for DCM Barges/Equipment, 27-Jul-18 A
08-920	Submission of Lab-bench-scale testing proposal	Mandatory Start	147			01-Mar-18 A	26-Jul-18 A				100%	01-Mar-18 A Submission of Lab-bench-scale testing proposal, 26-Jul-18 A
08-930	Submission of Preconstruction site trial proposal	Mandatory Start	137			26-Mar-18 A	10-Aug-18 A				100%	26-Mar-18 A Submission of Preconstruction site trial proposal, 10-Aug-18 A
08-940	Submission of static loading test proposal		245			13-Mar-18 A	13-Nov-18 A				100%	13-Mar-18 A Submission of static loading test proposal, 13-Nov-18 A
08-950	Particulars for Construction Works Plan (CWP) for DCM Works		51			29-Oct-18 A	19-Dec-18 A				100%	29-Oct-18 A Particulars for Construction Works Plan (CWP) for DCM Works, 19-Dec-18 A
08-960	Submission of particular for DCM materials		92			26-Mar-18 A	26-Jun-18 A				100%	26-Mar-18 A Submission of particular for DCM materials, 26-Jun-18 A
08-970	Submission of Binder		92			26-Mar-18 A	26-Jun-18 A				100%	26-Mar-18 A Submission of Binder, 26-Jun-18 A
08-980	Submission of Silt Curtain System		177			29-Jan-18 A	25-Jul-18 A				100%	29-Jan-18 A Submission of Silt Curtain System, 25-Jul-18 A
EP_SP_66_12-WP-3-M28.08.1 Marine Construction												
EP_SP_66_12-WP-3-M28.08.1.1 Phase I - Construction of Perimeter Seawalls												
EP_SP_66_12-WP-3-M28.08.1.1.3 Marine Works Preparations												
08-0900	Carry out hydrographic survey		13			10-Jan-18 A	23-Jan-18 A				100%	10-Jan-18 A Carry out hydrographic survey, 23-Jan-18 A
08-1010	Mobilization of DCM Barge for Site Trial		28			14-Jun-18 A	12-Jul-18 A				100%	14-Jun-18 A Mobilization of DCM Barge for Site Trial, 12-Jul-18 A
08-1020	Mobilization of Second DCM Barge for Construction		31			14-Nov-18 A	15-Dec-18 A				100%	14-Nov-18 A Mobilization of Second DCM Barge for Construction, 15-Dec-18 A
08-1030(3)(M15)	Mobilization of Third DCM Barge for Construction	Start On or After	76			04-Apr-19 A	19-Jun-19 A				100%	04-Apr-19 A Mobilization of Third DCM Barge for Construction, 19-Jun-19 A
08-1340(2)	Sediment Sample collection and testing Dumping Permit Application	Start On or After	30			05-Sep-18 A	05-Oct-18 A				100%	05-Sep-18 A Sediment Sample collection and testing Dumping Permit Application, 05-Oct-18 A
EP_SP_66_12-WP-3-M28.08.1.1.3.2 Marine Ground Investigation Works												
08-1005-1	Ground Investigation - CPT for DCM Design Verification (145 nr.) (Deleted 26 nrs adj, Shek Kwu Chau)		67			09-Mar-18 A	15-May-18 A				100%	09-Mar-18 A Ground Investigation - CPT for DCM Design Verification (145 nr.) (Deleted 26 nrs adj, Shek Kwu Chau), 15-May-18 A
08-1005-2	Borehole Batch 1 for DCM & Caisson Design Verification at Short Breakwater Area (5 nr. @ 1 rigs)	Start On or After	41			16-Jun-18 A	27-Jul-18 A				100%	16-Jun-18 A Borehole Batch 1 for DCM & Caisson Design Verification at Short Breakwater Area (5 nr. @ 1 rigs), 27-Jul-18 A
08-1005-3	Borehole Batch 2 for DCM & Caisson Design Verification at Seawall & Berth Area (18 nr. @ 3 rigs)	Start On or After	146			17-Apr-18 A	10-Sep-18 A				100%	17-Apr-18 A Borehole Batch 2 for DCM & Caisson Design Verification at Seawall & Berth Area (18 nr. @ 3 rigs), 10-Sep-18 A
08-1005-4	Borehole Batch 3 for Blockwork Seawall Design Verification (10 nr. @ 3 rigs)	Finish On or Before	81			27-Sep-18 A	17-Dec-18 A				100%	27-Sep-18 A Borehole Batch 3 for Blockwork Seawall Design Verification (10 nr. @ 3 rigs), 17-Dec-18 A
08-1005-5	Borehole Batch 4 for Reclamation Design (10 nr. @ 3 rigs)		140			06-Aug-18 A	24-Dec-18 A				100%	06-Aug-18 A Borehole Batch 4 for Reclamation Design (10 nr. @ 3 rigs), 24-Dec-18 A
08-1005-6	Borehole Batch 4 for DCM & Caisson Design Verification at Short Breakwater Area (8 nr. @ 1 rig)		52			31-Aug-18 A	22-Oct-18 A				100%	31-Aug-18 A Borehole Batch 4 for DCM & Caisson Design Verification at Short Breakwater Area (8 nr. @ 1 rig), 22-Oct-18 A
EP_SP_66_12-WP-3-M28.08.1.1.1 Seawall and Berth at DCM Area												
EP_SP_66_12-WP-3-M28.08.1.1.1.1 Bench-scale Testing												
08-1030-01(1)(A)	Collect Soil Sample by Vibrocore Method (16 nr.)		14			13-Mar-18 A	26-Mar-18 A				100%	13-Mar-18 A Collect Soil Sample by Vibrocore Method (16 nr.), 26-Mar-18 A
08-1030-02(1)(A)	Bench-scale Mixing		32			26-Mar-18 A	27-Apr-18 A				100%	26-Mar-18 A Bench-scale Mixing, 27-Apr-18 A
08-1030-03(1)(A)	Bench-scale Test for Trial Mix (14 days)		15			09-Apr-18 A	24-Apr-18 A				100%	09-Apr-18 A Bench-scale Test for Trial Mix (14 days), 24-Apr-18 A
08-1030-04(1)(A)	Bench-scale Test for Trial Mix (28 days)		44			23-Mar-18 A	06-May-18 A				100%	23-Mar-18 A Bench-scale Test for Trial Mix (28 days), 06-May-18 A
08-1030-05(1)(A)	Bench-scale Test for Trial Mix (90 days)		31			26-Jun-18 A	27-Jul-18 A				100%	26-Jun-18 A Bench-scale Test for Trial Mix (90 days), 27-Jul-18 A
EP_SP_66_12-WP-3-M28.08.1.1.1.2 DCM Plant & Site Trial												
08-1040-01(1)(A)	Lay Geotextile and Sand Blanket		11			09-Jul-18 A	20-Jul-18 A				100%	09-Jul-18 A Lay Geotextile and Sand Blanket, 20-Jul-18 A
08-1040-02(1)(A)	Pre CPT for Site Trial (7 nr.)	Start On or After	4			28-Jun-18 A	02-Jul-18 A				100%	28-Jun-18 A Pre CPT for Site Trial (7 nr.), 02-Jul-18 A
08-1040-03(1)(A)	DCM Plant Trial Injections - Group 1 - 3 (9 nr.)		4			23-Jul-18 A	27-Jul-18 A				100%	23-Jul-18 A DCM Plant Trial Injections - Group 1 - 3 (9 nr.), 27-Jul-18 A
08-1040-04(1)(A)	DCM Plant Trial Injections - Group 4 - 6 (9 nr.)		0			27-Jul-18 A	27-Jul-18 A				100%	27-Jul-18 A DCM Plant Trial Injections - Group 4 - 6 (9 nr.), 27-Jul-18 A
08-1040-05(1)(A)	DCM Plant Trial Injections - Group 7 (2 nr.)		0			28-Jul-18 A	28-Jul-18 A				100%	28-Jul-18 A DCM Plant Trial Injections - Group 7 (2 nr.), 28-Jul-18 A
08-1040-06(1)(A)	Coring for Proof Test - Group 1 - 3 (3 nr.)		6			19-Aug-18 A	25-Aug-18 A				100%	19-Aug-18 A Coring for Proof Test - Group 1 - 3 (3 nr.), 25-Aug-18 A
08-1040-07(1)(A)	Coring for Proof Test - Group 4 - 6 (3 nr.)		4			27-Aug-18 A	31-Aug-18 A				100%	27-Aug-18 A Coring for Proof Test - Group 4 - 6 (3 nr.), 31-Aug-18 A
08-1040-08(1)(A)	Coring for Proof Test - Group 7 (1 nr.)		2			01-Sep-18 A	02-Sep-18 A				100%	01-Sep-18 A Coring for Proof Test - Group 7 (1 nr.), 02-Sep-18 A
08-1040-09(1)(A)	Carry Laboratory Testing - Group 1 - 3 (3 nr.)		1			23-Aug-18 A	24-Aug-18 A				100%	23-Aug-18 A Carry Laboratory Testing - Group 1 - 3 (3 nr.), 24-Aug-18 A
08-1040-10(1)(A)	Carry Laboratory Testing - Group 4 - 6 (3 nr.)		1			01-Sep-18 A	01-Sep-18 A				100%	01-Sep-18 A Carry Laboratory Testing - Group 4 - 6 (3 nr.), 01-Sep-18 A
08-1040-11(1)(A)	Carry Laboratory Testing - Group 7 (1 nr.)		1			03-Sep-18 A	03-Sep-18 A				100%	03-Sep-18 A Carry Laboratory Testing - Group 7 (1 nr.), 03-Sep-18 A
EP_SP_66_12-WP-3-M28.08.1.1.2.1 Plant & Site Trial Retrial												
08-1040-13(1)(A)	Trial Injection Group 1 (2nr.)		1			11-Sep-18 A	12-Sep-18 A				100%	11-Sep-18 A Trial Injection Group 1 (2nr.), 12-Sep-18 A
08-1040-14(1)(A)	Trial Injection Group 2 (2nr.)		0			22-Sep-18 A	22-Sep-18 A				100%	22-Sep-18 A Trial Injection Group 2 (2nr.), 22-Sep-18 A
08-1040-15(1)(A)	Trial Injection Group 3 (2nr.)		0			22-Sep-18 A	22-Sep-18 A				100%	22-Sep-18 A Trial Injection Group 3 (2nr.), 22-Sep-18 A
08-1040-16(1)(A)	Trial Injection Group 4 (2nr.)		1			26-Sep-18 A	26-Sep-18 A				100%	26-Sep-18 A Trial Injection Group 4 (2nr.), 26-Sep-18 A
08-1040-17(1)(A)	Trial Injection Group 5 (2nr.)		0			26-Sep-18 A	26-Sep-18 A				100%	26-Sep-18 A Trial Injection Group 5 (2nr.), 26-Sep-18 A
08-1040-18(1)(A)	Trial Injection Group 6 (2nr.)		1			28-Sep-18 A	28-Sep-18 A				100%	28-Sep-18 A Trial Injection Group 6 (2nr.), 28-Sep-18 A
08-1040-19(1)(A)	Trial Injection Group 7 (2nr.)		1			29-Sep-18 A	29-Sep-18 A				100%	29-Sep-18 A Trial Injection Group 7 (2nr.), 29-Sep-18 A
08-1040-20(1)(A)	Trial Injection Group 8 (2nr.)		1			30-Sep-18 A	30-Sep-18 A				100%	30-Sep-18 A Trial Injection Group 8 (2nr.), 30-Sep-18 A
08-1040-21(1)(A)	Trial Injection Group 9 (2nr.)		1			01-Oct-18 A	02-Oct-18 A				100%	01-Oct-18 A Trial Injection Group 9 (2nr.), 02-Oct-18 A
08-1040-22(1)(A)	Trial Injection Group 10 (2nr.)		0			02-Oct-18 A	02-Oct-18 A				100%	02-Oct-18 A Trial Injection Group 10 (2nr.), 02-Oct-18 A
08-1040-23(1)(A)	Coring for Proof Test - No. 1 & 2		3			07-Oct-18 A	09-Oct-18 A				100%	07-Oct-18 A Coring for Proof Test - No. 1 & 2, 09-Oct-18 A
08-1040-24(1)(A)	Coring for Proof Test - No. 3 & 4		4			15-Oct-18 A	18-Oct-18 A				100%	15-Oct-18 A Coring for Proof Test - No. 3 & 4, 18-Oct-18 A
08-1040-25(1)(A)	Coring for Proof Test - No. 5 & 6		5			18-Oct-18 A	22-Oct-18 A				100%	18-Oct-18 A Coring for Proof Test - No. 5 & 6, 22-Oct-18 A
08-1040-26(1)(A)	Coring for Proof Test - No. 7 & 8		4			22-Oct-18 A	25-Oct-18 A				100%	22-Oct-18 A Coring for Proof Test - No. 7 & 8, 25-Oct-18 A
08-1040-27(1)(A)	Coring for Proof Test - No. 9		3			27-Oct-18 A	29-Oct-18 A				100%	27-Oct-18 A Coring for Proof Test - No. 9, 29-Oct-18 A
08-1040-28(1)(A)	Coring for Proof Test - No. 10 & 11		5			03-Nov-18 A	08-Nov-18 A				100%	03-Nov-18 A Coring for Proof Test - No. 10 & 11, 08-Nov-18 A
08-1040-29(1)(A)	Coring for Proof Test - No. 12 & 13		6			08-Nov-18 A	14-Nov-18 A				100%	08-Nov-18 A Coring for Proof Test - No. 12 & 13, 14-Nov-18 A
08-1040-30(1)(A)	Coring for Proof Test - No. 14 & 15		4			16-Nov-18 A	20-Nov-18 A				100%	16-Nov-18 A Coring for Proof Test - No. 14 & 15, 20-Nov-18 A
08-1040-33(1)(A)	Laboratory Testing - No. 1 & 2		0			09-Oct-18 A	09-Oct-18 A				100%	09-Oct-18 A Laboratory Testing - No. 1 & 2, 09-Oct-18 A
08-1040-34(1)(A)	Laboratory Testing - No. 3 & 4		1			20-Oct-18 A	20-Oct-18 A				100%	20-Oct-18 A Laboratory Testing - No. 3 & 4, 20-Oct-18 A
08-1040-35(1)(A)	Laboratory Testing - No. 5 & 6		1			24-Oct-18 A	24-Oct-18 A				100%	24-Oct-18 A Laboratory Testing - No. 5 & 6, 24-Oct-18 A
08-1040-36(1)(A)	Laboratory Testing - No. 7 & 8		1			25-Oct-18 A	25-Oct-18 A				100%	25-Oct-18 A Laboratory Testing - No. 7 & 8, 25-Oct-18 A
08-1040-37(1)(A)	Laboratory Testing - No. 9		1			30-Oct-18 A	30-Oct-18 A				100%	30-Oct-18 A Laboratory Testing - No. 9, 30-Oct-18 A
08-1040-38(1)(A)	Laboratory Testing - No. 10 & 11		0			08-Nov-18 A	08-Nov-18 A				100%	08-Nov-18 A Laboratory Testing - No. 10 & 11, 08-Nov-18 A
08-1040-39(1)(A)	Laboratory Testing - No. 12 & 13		4			10-Nov-18 A	14-Nov-18 A				100%	10-Nov-18 A Laboratory Testing - No. 12 & 13, 14-Nov-18 A
08-1040-40(1)(A)	Laboratory Testing - No. 14 & 15		0			21-Nov-18 A	21-Nov-18 A				100%	21-Nov-18 A Laboratory Testing - No. 14 & 15, 21-Nov-18 A
08-1040-43(1)(A)	Issue Test Report		4			22-Nov-18 A	26-Nov-18 A				100%	22-Nov-18 A Issue Test Report, 26-Nov-18 A
08-1040-44(3)(A)	Carry out CPT for Plant Trial retiral (10 nr. @2nr./day)		31			13-Feb-19 A	16-Mar-19 A				100%	13-Feb-19 A Carry out CPT for Plant Trial retiral (10 nr. @2nr./day), 16-Mar-19 A
08-1040-45(3)(A)	Carry out Plant Trial for DCM Barges		3			19-Feb-19 A	19-Mar-19 A				100%	19-Feb-19 A Carry out Plant Trial for DCM Barges, 19-Mar-19 A

	Primary Baseline		Critical Remaining Work		Actual Milestone
	WP3 BL Critical Works		Baseline Milestone		

