

## Appendix A Master Programme

Activity ID	Activity Name	Original Duration	Remaining Duration	Activity % Complete	Current Start	Current Finish	Late Start	Late Finish	Total Float	M86 Remarks	2025			
											Jan 86	Feb 87	Mar 88	Apr 89
<b>Programme for Design and Construction Works WP7C-M86 - 3-Month</b>														
<b>Key Dates</b>														
<b>Contractual Key Dates</b>														
01-1020(7A)	Extension of Time (EOT) Granted (in working days)	372	220	40.86%	28-Jul-24 A	27-Oct-25	28-Jan-25	25-Oct-25	-1					
<b>Dates of Site Possession</b>														
01-1190	Possession of Portion 6	0	0	0%	02-Apr-25	02-Apr-25	17-May-25	17-May-25	45					◆ Possession of Portion 6
<b>License/Permit Applications</b>														
<b>License Application for Brine Discharge</b>														
03-4000(7)	Issuance of Conditional License by EPD	0	0	0%		21-Feb-25		01-Feb-25	-20					◆ Issuance of Conditional License by EPD
03-4010(7)	Issuance of Brine Discharge License by EPD	7	7	0%	22-Feb-25	28-Feb-25	02-Feb-25	08-Feb-25	-20					◆ Issuance of Brine Discharge License by EPD
<b>DG Licence</b>														
<b>Day Tank &amp; Fuel Oil Storage (Cat 5)</b>														
03-1410	DGD and VD Review and Approval of Submission	90	28	68.89%	03-Jan-25 A	27-Feb-25	26-Oct-24	22-Nov-24	-97					DGD and VD Review and Approval of Submission
<b>E. Gen RM for IWMF Substation</b>														
03-1420	DGD Compliance Inspection, Defects Rectification and Re-inspection	60	60	0%	28-Feb-25	28-Apr-25	27-Dec-24	24-Feb-25	-63					
03-1430	VD Compliance Inspection, Defects Rectification and Re-inspection	60	60	0%	28-Feb-25	28-Apr-25	27-Dec-24	24-Feb-25	-63					
03-1440	Issue of DG License	14	14	0%	29-Apr-25	12-May-25	25-Feb-25	10-Mar-25	-63					
<b>Fuel Oil System</b>														
03-3850	DGD Compliance Inspection, Defects Rectification and Re-inspection	14	14	0%	02-Mar-25	15-Mar-25	23-Nov-24	06-Dec-24	-99					DGD Compliance Inspection, Defects Rectification and Re-inspection
03-3860	VD Compliance Inspection, Defects Rectification and Re-inspection	14	14	0%	02-Mar-25	15-Mar-25	23-Nov-24	06-Dec-24	-99					VD Compliance Inspection, Defects Rectification and Re-inspection
03-3870	Issuance of DG License	14	14	0%	16-Mar-25	29-Mar-25	07-Dec-24	20-Dec-24	-99					Issuance of DG License
<b>Chemical Stores (all Cat)</b>														
03-1490	DGD and VD Review and Approval of Submission	45	45	0%	15-Feb-25*	31-Mar-25	12-Nov-24	26-Dec-24	-95	Remove Actual Start; Update Original Duration from 98d to 45d				DGD and VD Review and Approval of Submission
03-1500	DGD Compliance Inspection, Defects Rectification and Re-inspection	60	60	0%	01-Apr-25	30-May-25	27-Dec-24	24-Feb-25	-95					
03-1510	VD Compliance Inspection, Defects Rectification and Re-inspection	60	60	0%	01-Apr-25	30-May-25	27-Dec-24	24-Feb-25	-95					
<b>Fire Services Installations (FSI) Certificate</b>														
<b>Fire Services Installations Certificate Inspection</b>														
03-1555-1(7C)	FSI 314 Submission and Approval	90	90	0%	06-Dec-24 A	30-Apr-25	17-Feb-25	17-May-25	17	New Activity				
<b>Air Pollution Control (Specified Processes) License</b>														
03-1780(3)	Preparation and Submission for Trial Plan	60	60	0%	28-Feb-25*	28-Apr-25	02-Jan-25	02-Mar-25	-57	Remove Actual Start and Actual Finish Da				
03-1790(3)	Review and approval of Trial Plan by EPD Licensing Department	90	90	0%	29-Apr-25	27-Jul-25	03-Mar-25	31-May-25	-57	Remove Actual Start and Actual Finish Da				
<b>Boilers and Pressure Vessels License</b>														
03-1930(3)	L1 & L2 Preparation and Submit inspection report and associated document to LD	53	16	69.52%	10-Dec-24 A	15-Feb-25	14-Nov-24	29-Nov-24	-78					L1 & L2 Preparation and Submit inspection report and associated document to LD
03-1940(3)	L1 & L2 Issuance of all Boiler License	21	21	0%	16-Feb-25	08-Mar-25	30-Nov-24	20-Dec-24	-78					L1 & L2 Issuance of all Boiler License
03-1950(M83)	L3 & L4 Completion of on-site boiler installation & Testing	0	0	0%		10-Mar-25		25-Oct-24	-136					◆ L3 & L4 Completion of on-site boiler installation & Testing
03-1960(M83)	L3 & L4 Preparation and Submit inspection report and associated document to LD	40	40	0%	11-Mar-25	19-Apr-25	26-Oct-24	04-Dec-24	-136	Update Original Duration from 60d to 40d				L3 & L4 Preparat
03-1970(M83)	L3 & L4 Issuance of all Boiler License	21	21	0%	20-Apr-25	10-May-25	05-Dec-24	25-Dec-24	-136					
03-1980(M83)	L5 & L6 Completion of on-site boiler installation & Testing	0	0	0%		09-Apr-25		09-Nov-24	-151					◆ L5 & L6 Completion of on-site boile
03-1980(M83)10	L5 & L6 Preparation and Submit inspection report and associated document to LD	48	48	0%	10-Apr-25	27-May-25	10-Nov-24	27-Dec-24	-151	Update Original Duration from 60d to 48d				
<b>Lifts or Escalators</b>														
03-1060	Notification of Commencement of Works Involving Installation or Maintenance	0	0	0%	31-Jan-25	31-Jan-25	15-Feb-25	15-Feb-25	15					◆ Notification of Commencement of Works Involving Installation or Maintenance
<b>Design Submissions</b>														
<b>AIP Design Package Submissions</b>														
<b>AIP Testing and Commissioning (2.12)</b>														
05-2680	Plant commissioning plan (2.12.04)	105	105	0%	31-Jan-25	15-May-25	27-Nov-24	11-Mar-25	-65					
<b>AIP Miscellaneous Works (2.14)</b>														
05-2710	Existing onshore crane replacement works at Portion 2	221	149	32.58%	30-Apr-24 A	28-Jun-25	03-Dec-25	30-Apr-26	306					
<b>AIP O&amp;M Packages</b>														
05-8010(6E)	Warehouse (O&M Scope)	185	29	84.32%	04-Jul-22 A	28-Feb-25	27-Sep-24	25-Oct-24	-126					Warehouse (O&M Scope)
05-8020(6E)	Workshop (O&M Scope)	150	29	80.67%	04-Jul-22 A	28-Feb-25	27-Sep-24	25-Oct-24	-126					Workshop (O&M Scope)
05-8050-1(M55)	Design of (pilot) Electric Vehicle	210	210	0%	28-Feb-25*	25-Sep-25	26-Dec-24	23-Jul-25	-64					
<b>DDA Design Package Submissions</b>														
<b>DDA Ground Treatment, Reclamation, Seawall, Breakwater, Berth (2.2)</b>														
05-3450	Seawall design (2.2.20)	60	11	81.67%	20-Jan-19 A	10-Feb-25	17-Oct-24	27-Oct-24	-106					Seawall design (2.2.20)
05-3460	Breakwater design (2.2.21)	105	32	69.52%	12-Apr-19 A	03-Mar-25	01-May-25	01-Jun-25	90					Breakwater design (2.2.21)
05-3470	Berth design (2.2.22)	60	6	90%	30-Jan-19 A	05-Feb-25	13-Dec-24	18-Dec-24	-49					Berth design (2.2.22)
05-3480	Onshore crane Facility (2.2.23)	60	3	95%	01-Feb-24 A	02-Feb-25	16-Dec-24	18-Dec-24	-46					Onshore crane Facility (2.2.23)
05-3490	Onshore vessel power supply system (2.2.24)	90	29	67.78%	29-Feb-24 A	28-Feb-25	20-Jan-25	17-Feb-25	-11					Onshore vessel power supply system (2.2.24)
<b>DDA Incineration Plant Buildings (2.3)</b>														
<b>Electrical and instrumentation works design (2.3.15)</b>														
<b>Operation Management System (2.3.15.04)</b>														
05-5400-1(M22)	Automatic Traffic Control System (ATCS)	90	15	83.33%	14-Jun-23 A	14-Feb-25	26-Nov-24	10-Dec-24	-66					Automatic Traffic Control System (ATCS)
<b>2.3.15.05</b>														
05-3390-4(M55)	Electrical and Instrumentation Works - Waste Crane and Grapple System (2.3.15.05.04)	105	29	72.38%	30-Sep-20 A	28-Feb-25	25-Dec-24	22-Jan-25	-37					Electrical and Instrumentation Works - Waste Crane and Grapple System (2.3.15.05.04)
<b>Building services design (excluding fire services installation design) (2.3.18)</b>														
05-3750	Lifts and Escalators (2.3.18.07.07.01)	90	29	67.78%	13-Jul-23 A	28-Feb-25	18-Mar-25	15-Apr-25	46					Lifts and Escalators (2.3.18.07.07.01)
05-3780	Vehicle & Container Wash System (2.3.18.01.10.01)	60	30	50%	28-Apr-23 A	01-Mar-25	23-Oct-24	21-Nov-24	-100					Vehicle & Container Wash System (2.3.18.01.10.01)
<b>DDA Mechanical Treatment Plant Building (2.4)</b>														
05-5190	Electrical and instrumentation works design	121	30	0%	18-Nov-24 A	01-Mar-25	14-Oct-24	12-Nov-24	-109	Change remaining duration to 30				Electrical and instrumentation works design
05-5200	Mechanical works design (2.4.16)	135	29	20%	14-Aug-23 A	28-Feb-25	14-Sep-24	12-Oct-24	-139					Mechanical works design (2.4.16)

Activity ID	Activity Name	Original Duration	Remaining Duration	Activity % Complete	Current Start	Current Finish	Late Start	Late Finish	Total Float	M86 Remarks	2025			
											Jan 86	Feb 87	Mar 88	Apr 89
<b>Building services design (excluding fire services installation design) (2.4.18)</b>														
05-3910	Lifts and Escalators (2.4.18.08.01)	90	7	92.22%	13-Jul-23 A	06-Feb-25	09-May-25	15-May-25	98					
<b>DDA Wastewater Treatment Plant (2.5)</b>														
05-3960	Mechanical works design (2.5.16) (5 Packages)	232	47	35%	31-May-22 A	18-Mar-25	10-Aug-26	25-Sep-26	556					
<b>DDA Water Treatment Plant Building (2.6)</b>														
05-4090	Mechanical works design (2.6.16)	90	11	30%	02-May-22 A	10-Feb-25	27-Dec-24	06-Jan-25	-35					
<b>Electrical and instrumentation works design (2.6.15)</b>														
05-7450(7B)	WTP Process Control Philosophy (2.6.15.05.03)	90	31	65.56%	16-Jan-24 A	02-Mar-25	20-Nov-24	20-Dec-24	-72	Remove Successor 01-1225(7) FSO; Add Successor 16-1660 FSO				
<b>DDA Administration Building (2.7)</b>														
05-4200	Electrical and instrumentation works design (2.7.13)	60	20	66.67%	02-Dec-22 A	19-Feb-25	12-Jul-26	31-Jul-26	527					
<b>Building services design (excluding fire services installation design) (2.7.15)</b>														
05-4280	Lifts and Escalators (2.7.15.06.01)	90	7	92.22%	13-Jul-23 A	06-Feb-25	04-Jun-26	10-Jun-26	489					
<b>DDA IWMF Substation (2.8)</b>														
<b>Electrical and instrumentation works design (2.8.15)</b>														
2.8.15.06		90	6		16-Oct-21 A	05-Feb-25	08-Jan-25	13-Jan-25	-23					
05-4320	Electrical and instrumentation works design (2.8.15.06.01 to 40)	90	6	93.33%	16-Oct-21 A	05-Feb-25	08-Jan-25	13-Jan-25	-23					
<b>DDA Chimney</b>														
05-5540-3(7C)	BMU Design	90	90	0%	28-Feb-25*	28-May-25	20-Jan-25	19-Apr-25	-39	New Activity				
<b>Building services design (excluding fire services installation design)</b>														
05-6050-1(5a)	Lift	90	6	93.33%	13-Jul-23 A	05-Feb-25	10-Apr-25	15-Apr-25	69					
<b>DDA Roads and Utilities (2.10)</b>														
<b>Permanent road works layout on the Artificial Island (2.10.13)</b>														
05-4480	Road signage and markings	90	18	80%	08-Aug-22 A	17-Feb-25	07-Feb-25	24-Feb-25	7					
05-5400	Roads and hardstandings layout	90	18	80%	08-Aug-22 A	17-Feb-25	07-Feb-25	24-Feb-25	7					
<b>Sewerage design on the Artificial Island (2.10.14)</b>														
05-4430	Foul Sewerage	60	15	75%	14-Mar-23 A	14-Feb-25	29-Apr-25	13-May-25	88					
05-4440	Contaminated Sewerage (Site Wide Sewerage System)	60	15	75%	14-Mar-23 A	14-Feb-25	29-Apr-25	13-May-25	88					
05-4440-2(M55)	Ship-to-shore Sewage Transfer System for Passenger Ferry	90	32	64.91%	13-Jan-21 A	03-Mar-25	14-Apr-25	15-May-25	73					
<b>Drainage system design on the Artificial Island (2.10.15)</b>														
05-5310	Surface water Drainage System	90	14	85%	22-Feb-23 A	13-Feb-25	30-Apr-25	13-May-25	90					
05-5340(M81)	Pipework Design and Operation for Brine Discharge (2.10.15.05)	90	31	65.56%	20-Feb-23 A	02-Mar-25	16-Mar-25	15-Apr-25	44					
<b>Water supply system design on the Artificial Island (2.10.16)</b>														
05-5290	Water Tanks (2.11.20.01)	60	18	70%	28-Apr-21 A	17-Feb-25	04-Nov-24	21-Nov-24	-88					
05-5300-1(M24)	E&M system for seawater intake (2.10.16.07)	105	14	86.67%	04-Apr-22 A	13-Feb-25	08-Nov-24	21-Nov-24	-84					
05-5300-3(5a)	Chemical scrubber system for odour control (2.10.16.10.01)	105	32	70%	18-Dec-23 A	03-Mar-25	21-Oct-24	21-Nov-24	-102					
<b>Design of telecommunication and other utilities (2.10.18)</b>														
05-4580	Power Distribution System concept / schematics (2.10.18.01.01)	45	30	60%	25-Mar-23 A	01-Mar-25	06-Sep-24	05-Oct-24	-147					
05-4590	Site Lighting Concept / Schematics (2.10.18.02.01)	45	30	60%	03-Oct-23 A	01-Mar-25	28-Oct-24	26-Nov-24	-95					
05-4600	Lightning Protection System concept / schematics (2.10.18.03.01)	45	30	60%	11-Jun-24 A	01-Mar-25	28-Oct-24	26-Nov-24	-95					
05-4610	Site ELV Network System - Communications System concept / schematics	75	30	60%	16-Aug-22 A	01-Mar-25	28-Oct-24	26-Nov-24	-95					
05-4620	Site ELV Network System - Security Systems concept / schematics	75	30	60%	14-Jun-22 A	01-Mar-25	28-Oct-24	26-Nov-24	-95					
05-4630	Site ELV Network System - Navigation aids concept / schematics	60	0%	0%	31-Jan-25	31-Mar-25	28-Sep-24	26-Nov-24	-125					
05-4640	Microwave transmission of FS direct link	105	3	97.14%	22-Aug-22 A	02-Feb-25	24-Nov-24	26-Nov-24	-68					
05-4650	Fuel Handling System concept / schematics	60	30	50%	14-Dec-24 A	01-Mar-25	24-Oct-24	22-Nov-24	-99					
<b>DDA Architectural, Finishes and Landscaping Works (2.11)</b>														
<b>External and internal finishes design</b>														
05-4670	External and internal finishes design for Incineration Plant Building (2.11.15.01)	90	22	75.08%	19-Sep-22 A	22-Feb-25	21-Feb-25	15-Mar-25	22					
05-4720	External and internal finishes design for Reception Pavilion (2.11.01.05)	90	28	68.89%	10-Nov-22 A	27-Feb-25	16-Jan-25	12-Feb-25	-15					
05-4730	External and internal finishes design for MT Plant Building (2.11.16)	60	18	69.68%	16-Aug-23 A	18-Feb-25	24-Oct-24	11-Nov-24	-98					
05-4740	External and internal finishes design for the Wastewater Treatment Plant (2.11.17)	60	17	71.33%	06-Jun-23 A	17-Feb-25	03-Dec-24	20-Dec-24	-58					
05-4750	External and internal finishes design for the Water Treatment Plant Building (2.11.08)	60	19	68.89%	16-Aug-23 A	18-Feb-25	30-Oct-24	17-Nov-24	-93					
05-4760	External and internal finishes design for the Administration Building (2.11.19)	60	19	68.37%	21-Sep-23 A	18-Feb-25	12-Dec-24	30-Dec-24	-50					
05-5430	External and internal finishes design for Elevated Driveway	90	22	75.72%	15-Jun-21 A	21-Feb-25	24-Oct-24	14-Nov-24	-99					
<b>Landscaping Works (2.11.21)</b>														
05-4780	Landscape Masterplan & Landscape Design for Water Feature (2.11.19.01)	105	2	98%	26-Jan-23 A	02-Feb-25	27-Apr-25	29-Apr-25	87					
<b>DDA Testing and Commissioning (2.12)</b>														
05-4810-2(M55)	FAT of DCS - Software SIL FAT Plant for Process Island (2.12.09.03.01)	105	10	90.48%	19-May-22 A	09-Feb-25	11-Dec-24	20-Dec-24	-51					
<b>DDA Transportation Facilities for the Operation (2.13)</b>														
05-4850	Design of vehicles for MSW and Ash and Residues delivery (2.13.05)	186	185	0.54%	30-Jan-25 A	03-Aug-25	26-Apr-25	27-Oct-25	85	Update Actual Start Date				
05-4860	Design of marine vessels for the use of the Employer and visitors (2.13.06)	240	90	62.5%	30-Jun-23 A	30-Apr-25	30-Jul-25	27-Oct-25	180					
<b>DDA Miscellaneous Works (2.14)</b>														
05-4870	Process Related CCTV and Existing onshore crane replacement works at Portion 2 (2.14.05)	220	117	46.82%	20-Oct-24 A	27-May-25	28-Jun-25	29-Mar-26	306					
05-4880	Design of visitors and environmental education facilities (2.14.06)	62	61	1.61%	30-Jan-25 A	01-Apr-25	28-Jun-25	27-Aug-25	148	Update Actual Start Date				
<b>DDA Miscellaneous Detailing (2.15)</b>														
05-4890	Covered walkway at passenger berth (2.15.09)	70	21	70%	06-Sep-23 A	20-Feb-25	02-Nov-24	22-Nov-24	-90					
05-4900	Gatehouses (2.15.09)	60	18	70%	06-Sep-23 A	17-Feb-25	07-Feb-25	24-Feb-25	7					
05-4910	Weighbridge office (2.15.08)	32	29	30%	01-Nov-24 A	28-Feb-25	24-Oct-24	21-Nov-24	-99					
<b>DDA Auxiliary Plant Systems (2.16)</b>														
05-4930	Vehicle Fuel Filling Station (2.16.05)	30	21	30%	07-Mar-23 A	20-Feb-25	02-Nov-24	22-Nov-24	-90					
05-4940-2(5a)	Hoisting systems (2.16.10)	180	7	96.11%	24-May-23 A	06-Feb-25	23-Apr-25	29-Apr-25	82					

Activity ID	Activity Name	Original Duration	Remaining Duration	Activity % Complete	Current Start	Current Finish	Late Start	Late Finish	Total Float	M86 Remarks	2025			
											Jan 86	Feb 87	Mar 88	Apr 89
<b>DDA O&amp;M Packages</b>		241	210		24-Dec-24 A	28-Aug-25	26-Oct-24	23-Jun-25	-66					
05-8070(6E)	Warehouse (O&M Scope)	181	181	0%	01-Mar-25	28-Aug-25	26-Oct-24	24-Apr-25	-126					
05-8080(6E)	Workshop (O&M Scope)	181	181	0%	01-Mar-25	28-Aug-25	26-Oct-24	24-Apr-25	-126					
05-8090(6E)	Ash & Residues Container (O&M Scope)	180	151	16.11%	24-Dec-24 A	30-Jun-25	25-Nov-24	24-Apr-25	-67					
05-8110(6E)	Other Mobile Plants (O&M Scope)	181	180	0.55%	30-Jan-25 A	29-Jul-25	27-Oct-24	24-Apr-25	-96	Update Actual Start Date				
05-8110-1(M55)	Design of (pilot) Electric Vehicle	180	180	0%	28-Feb-25	26-Aug-25	26-Dec-24	23-Jun-25	-64					
<b>System Commissioning Plan</b>		426	60		12-Apr-24 A	31-Mar-25	23-Sep-24	10-Mar-25	-21					
05-4820-1(M83)	SAT Trial Plan Volume (2)	90	27	70%	12-Apr-24 A	26-Feb-25	23-Sep-24	19-Oct-24	-130					
05-4830	System Commissioning Plan	90	60	80%	08-Jan-25 A	31-Mar-25	10-Jan-25	10-Mar-25	-21	Update Actual Start Date				System Commissioning Plan
<b>Procurement of Major Equipment</b>		1062	200		23-May-22 A	18-Aug-25	30-Aug-24	25-Sep-26	403					
<b>Off-site Fabrication of Incineration Modules</b>		982	120		23-May-22 A	30-May-25	13-Sep-24	17-Jan-25	-133					
<b>Fabrication of Module (TPU)</b>		982	120		23-May-22 A	30-May-25	13-Sep-24	17-Jan-25	-133					
<b>PFab 1- Line 1</b>		78	29		10-Jun-24 A	28-Feb-25	22-Nov-24	20-Dec-24	-70					
<b>Precommissioning</b>		78	29		10-Jun-24 A	28-Feb-25	22-Nov-24	20-Dec-24	-70					
06-TPU-1-1030	PFab 1-Line 1 - Pre-commissioning	78	29	62.82%	10-Jun-24 A	28-Feb-25	22-Nov-24	20-Dec-24	-70					PFab 1-Line 1 - Pre-commissioning
<b>PFab 1- Line 2</b>		70	29		30-Sep-24 A	28-Feb-25	22-Nov-24	20-Dec-24	-70					
<b>Precommissioning</b>		70	29		30-Sep-24 A	28-Feb-25	22-Nov-24	20-Dec-24	-70					
06-TPU-2-1020	PFab 1-Line 2 - Pre-commissioning	70	29	58.57%	30-Sep-24 A	28-Feb-25	22-Nov-24	20-Dec-24	-70					PFab 1-Line 2 - Pre-commissioning
<b>PFab 1- Line 3</b>		934	104		23-May-22 A	14-May-25	13-Sep-24	25-Dec-24	-140					
<b>E&amp;I Installation</b>		238	29		27-May-24 A	28-Feb-25	13-Sep-24	03-Dec-24	-87					
<b>Electrical</b>		206	29		27-May-24 A	28-Feb-25	13-Sep-24	03-Dec-24	-87					
06-TPU-3-1270	PFab 1-Line 3 - Electrical Cable Pulling and Termination	180	29	83.89%	27-May-24 A	28-Feb-25	05-Nov-24	03-Dec-24	-87					PFab 1-Line 3 - Electrical Cable Pulling and Termination
06-TPU-3-1280	PFab 1-Line 3 - Electrical Equipment Installation	180	29	83.89%	03-Jun-24 A	28-Feb-25	13-Sep-24	11-Oct-24	-140					PFab 1-Line 3 - Electrical Equipment Installation
<b>Instrument</b>		212	29		27-May-24 A	28-Feb-25	13-Sep-24	11-Oct-24	-140					
06-TPU-3-1300	PFab 1-Line 3 - Instrument Cable Pulling and Termination	180	29	83.89%	27-May-24 A	28-Feb-25	13-Sep-24	11-Oct-24	-140					PFab 1-Line 3 - Instrument Cable Pulling and Termination
06-TPU-3-1310	PFab 1-Line 3 - Instrument Equipment Installation	180	29	83.89%	03-Jun-24 A	28-Feb-25	13-Sep-24	11-Oct-24	-140					PFab 1-Line 3 - Instrument Equipment Installation
06-TPU-3-1320	PFab 1-Line 3 - Instrument Tubing Installation	180	29	83.89%	03-Jun-24 A	28-Feb-25	13-Sep-24	11-Oct-24	-140					PFab 1-Line 3 - Instrument Tubing Installation
<b>Insulation</b>		769	29		23-May-22 A	28-Feb-25	27-Nov-24	25-Dec-24	-65					
06-TPU-3-1010	PFab 1-Line 3 - Insulation	769	29	96.23%	23-May-22 A	28-Feb-25	27-Nov-24	25-Dec-24	-65					PFab 1-Line 3 - Insulation
<b>Precommissioning</b>		80	80		24-Feb-25	14-May-25	07-Oct-24	25-Dec-24	-140					
06-TPU-3-1020	PFab 1-Line 3 - Pre-commissioning	80	80	0%	24-Feb-25	14-May-25	07-Oct-24	25-Dec-24	-140	Update Original Duration from 60d to 80d				
<b>PFab 1- Line 4</b>		966	104		25-May-22 A	14-May-25	13-Sep-24	25-Dec-24	-140					
<b>E&amp;I Installation</b>		238	29		03-Jun-24 A	28-Feb-25	13-Sep-24	03-Dec-24	-87					
<b>Electrical</b>		238	29		03-Jun-24 A	28-Feb-25	13-Sep-24	03-Dec-24	-87					
06-TPU-4-1270	PFab 1-Line 4 - Electrical Cable Pulling and Termination	180	29	83.89%	03-Jun-24 A	28-Feb-25	05-Nov-24	03-Dec-24	-87					PFab 1-Line 4 - Electrical Cable Pulling and Termination
06-TPU-4-1280	PFab 1-Line 4 - Electrical Equipment Installation	180	29	83.89%	03-Jun-24 A	28-Feb-25	13-Sep-24	11-Oct-24	-140					PFab 1-Line 4 - Electrical Equipment Installation
<b>Instrument</b>		180	29		03-Jun-24 A	28-Feb-25	13-Sep-24	11-Oct-24	-140					
06-TPU-4-1300	PFab 1-Line 4 - Instrument Cable Pulling and Termination	180	29	83.89%	03-Jun-24 A	28-Feb-25	13-Sep-24	11-Oct-24	-140					PFab 1-Line 4 - Instrument Cable Pulling and Termination
06-TPU-4-1310	PFab 1-Line 4 - Instrument Equipment Installation	180	29	83.89%	03-Jun-24 A	28-Feb-25	13-Sep-24	11-Oct-24	-140					PFab 1-Line 4 - Instrument Equipment Installation
06-TPU-4-1320	PFab 1-Line 4 - Instrument Tubing Installation	180	29	83.89%	03-Jun-24 A	28-Feb-25	13-Sep-24	11-Oct-24	-140					PFab 1-Line 4 - Instrument Tubing Installation
<b>Insulation</b>		767	29		25-May-22 A	28-Feb-25	27-Nov-24	25-Dec-24	-65					
06-TPU-4-1010	PFab 1-Line 4 - Insulation	767	29	96.22%	25-May-22 A	28-Feb-25	27-Nov-24	25-Dec-24	-65					PFab 1-Line 4 - Insulation
<b>Precommissioning</b>		80	80		24-Feb-25	14-May-25	07-Oct-24	25-Dec-24	-140					
06-TPU-4-1020	PFab 1-Line 4 - Pre-commissioning	80	80	0%	24-Feb-25	14-May-25	07-Oct-24	25-Dec-24	-140	Update Original Duration from 53d to 80d				
<b>PFab 1- Line 5</b>		885	120		04-Jun-22 A	30-May-25	20-Sep-24	17-Jan-25	-133					
<b>E&amp;I Installation</b>		224	60		01-Aug-24 A	31-Mar-25	20-Sep-24	03-Jan-25	-87					
<b>Electrical</b>		194	60		01-Aug-24 A	31-Mar-25	20-Sep-24	03-Jan-25	-87					
06-TPU-5-1270	PFab 1-Line 5 - Electrical Cable Pulling and Termination	180	60	66.67%	14-Aug-24 A	31-Mar-25	05-Nov-24	03-Jan-25	-87					PFab 1-Line 5 - Electrical Cable Pulling and Termination
06-TPU-5-1280	PFab 1-Line 5 - Electrical Equipment Installation	180	60	66.67%	01-Aug-24 A	31-Mar-25	20-Sep-24	18-Nov-24	-133					PFab 1-Line 5 - Electrical Equipment Installation
<b>Instrument</b>		193	60		01-Aug-24 A	31-Mar-25	20-Sep-24	18-Nov-24	-133					
06-TPU-5-1300	PFab 1-Line 5 - Instrument Cable Pulling and Termination	180	60	66.67%	14-Aug-24 A	31-Mar-25	20-Sep-24	18-Nov-24	-133					PFab 1-Line 5 - Instrument Cable Pulling and Termination
06-TPU-5-1310	PFab 1-Line 5 - Instrument Equipment Installation	180	60	66.67%	01-Aug-24 A	31-Mar-25	20-Sep-24	18-Nov-24	-133					PFab 1-Line 5 - Instrument Equipment Installation
06-TPU-5-1320	PFab 1-Line 5 - Instrument Tubing Installation	180	60	66.67%	01-Aug-24 A	31-Mar-25	20-Sep-24	18-Nov-24	-133					PFab 1-Line 5 - Instrument Tubing Installation
<b>Insulation</b>		822	60		04-Jun-22 A	31-Mar-25	20-Sep-24	18-Nov-24	-133					
06-TPU-5-1010	PFab 1-Line 5 - Insulation	822	60	92.7%	04-Jun-22 A	31-Mar-25	20-Sep-24	18-Nov-24	-133					PFab 1-Line 5 - Insulation
<b>Precommissioning</b>		60	60		01-Apr-25	30-May-25	19-Nov-24	17-Jan-25	-133					
06-TPU-5-1020	PFab 1-Line 5 - Pre-commissioning	60	60	0%	01-Apr-25	30-May-25	19-Nov-24	17-Jan-25	-133	Update Original Duration from 43d to 60d				
<b>PFab 1- Line 6</b>		927	120		08-Jul-22 A	30-May-25	20-Sep-24	17-Jan-25	-133					
<b>E&amp;I Installation</b>		224	60		01-Aug-24 A	31-Mar-25	20-Sep-24	03-Jan-25	-87					
<b>Electrical</b>		194	60		01-Aug-24 A	31-Mar-25	20-Sep-24	03-Jan-25	-87					
06-TPU-6-1270	PFab 1-Line 6 - Electrical Cable Pulling and Termination	180	60	66.67%	14-Aug-24 A	31-Mar-25	05-Nov-24	03-Jan-25	-87					PFab 1-Line 6 - Electrical Cable Pulling and Termination
06-TPU-6-1280	PFab 1-Line 6 - Electrical Equipment Installation	180	60	66.67%	01-Aug-24 A	31-Mar-25	20-Sep-24	18-Nov-24	-133					PFab 1-Line 6 - Electrical Equipment Installation
<b>Instrument</b>		193	60		01-Aug-24 A	31-Mar-25	20-Sep-24	18-Nov-24	-133					
06-TPU-6-1300	PFab 1-Line 6 - Instrument Cable Pulling and Termination	180	60	66.67%	14-Aug-24 A	31-Mar-25	20-Sep-24	18-Nov-24	-133					PFab 1-Line 6 - Instrument Cable Pulling and Termination
06-TPU-6-1310	PFab 1-Line 6 - Instrument Equipment Installation	180	60	66.67%	01-Aug-24 A	31-Mar-25	20-Sep-24	18-Nov-24	-133					PFab 1-Line 6 - Instrument Equipment Installation
06-TPU-6-1320	PFab 1-Line 6 - Instrument Tubing Installation	180	60	66.67%	01-Aug-24 A	31-Mar-25	20-Sep-24	18-Nov-24	-133					PFab 1-Line 6 - Instrument Tubing Installation
<b>Insulation</b>		761	60		08-Jul-22 A	31-Mar-25	20-Sep-24	18-Nov-24	-133					
06-TPU-6-1010	PFab 1-Line 6 - Insulation	761	60	92.12%	08-Jul-22 A	31-Mar-25	20-Sep-24	18-Nov-24	-133					PFab 1-Line 6 - Insulation
<b>Precommissioning</b>		60	60		01-Apr-25	30-May-25	19-Nov-24	17-Jan-25	-133					
06-TPU-6-1020	PFab 1-Line 6 - Pre-commissioning	60	60	0%	01-Apr-25	30-May-25	19-Nov-24	17-Jan-25	-133	Update Original Duration from 44d to 60d				
<b>Fabrication of Module (FGC)</b>		940	120		30-Jun-22 A	30-May-25	20-Sep-24	17-Jan-25	-133					
<b>PFab 2 - Line 1</b>		78	29		10-Jun-24 A	28-Feb-25	22-Nov-24	20-Dec-24	-70					
<b>Precommissioning</b>		78	29		10-Jun-24 A	28-Feb-25	22-Nov-24	20-Dec-24	-70					
06-FGC-1-1190	PFab 2-Line 1 - Pre-commissioning	78	29	62.82%	10-Jun-24 A	28-Feb-25	22-Nov-24	20-Dec-24	-70					PFab 2-Line 1 - Pre-commissioning
<b>PFab 2 - Line 2</b>		70	29		30-Sep-24 A	28-Feb-25	22-Nov-24	20-Dec-24	-70					

Activity ID	Activity Name	Original Duration	Remaining Duration	Activity % Complete	Current Start	Current Finish	Late Start	Late Finish	Total Float	M86 Remarks	2025			
											Jan 86	Feb 87	Mar 88	Apr 89
<b>Precommissioning</b>														
06-FGC-2-1020	PFab 2-Line 2 - Pre-commissioning	70	29	58.57%	30-Sep-24 A	28-Feb-25	22-Nov-24	20-Dec-24	-70					
<b>PFab 2 - Line 3</b>														
<b>E&amp;I Installation</b>														
<b>Electrical</b>														
06-FGC-3-1250	PFab 2-Line 3 - Electrical Cable Pulling and Termination	180	29	83.89%	27-May-24 A	28-Feb-25	17-Oct-24	03-Dec-24	-87					
06-FGC-3-1260	PFab 2-Line 3 - Electrical Equipment Installation	180	29	83.89%	03-Jun-24 A	28-Feb-25	17-Oct-24	14-Nov-24	-106					
<b>Instrument</b>														
06-FGC-3-1280	PFab 2-Line 3 - Instrument Cable Pulling and Termination	180	29	83.89%	27-May-24 A	28-Feb-25	17-Oct-24	14-Nov-24	-106					
06-FGC-3-1290	PFab 2-Line 3 - Instrument Equipment Installation	180	29	83.89%	03-Jun-24 A	28-Feb-25	17-Oct-24	14-Nov-24	-106					
06-FGC-3-1300	PFab 2-Line 3 - Instrument Tubing Installation	180	29	83.89%	03-Jun-24 A	28-Feb-25	17-Oct-24	14-Nov-24	-106					
<b>Insulation</b>														
06-FGC-3-1170	PFab 2-Line 3 - Insulation	60	29	51.67%	15-Jun-24 A	28-Feb-25	27-Nov-24	25-Dec-24	-65					
<b>Precommissioning</b>														
06-FGC-3-1180	PFab 2-Line 3 - Pre-commissioning	60	60	0%	10-Feb-25	10-Apr-25	27-Oct-24	25-Dec-24	-106	Update Original Duration from 53d to 60d				
<b>PFab 2 - Line 4</b>														
<b>E&amp;I Installation</b>														
<b>Electrical</b>														
06-FGC-4-1250	PFab 2-Line 4 - Electrical Cable Pulling and Termination	180	29	83.89%	03-Jun-24 A	28-Feb-25	28-Sep-24	03-Dec-24	-87					
06-FGC-4-1260	PFab 2-Line 4 - Electrical Equipment Installation	180	29	83.89%	03-Jun-24 A	28-Feb-25	28-Sep-24	26-Oct-24	-125					
<b>Instrument</b>														
06-FGC-4-1280	PFab 2-Line 4 - Instrument Cable Pulling and Termination	180	29	83.89%	03-Jun-24 A	28-Feb-25	28-Sep-24	26-Oct-24	-125					
06-FGC-4-1290	PFab 2-Line 4 - Instrument Equipment Installation	180	29	83.89%	03-Jun-24 A	28-Feb-25	28-Sep-24	26-Oct-24	-125					
06-FGC-4-1300	PFab 2-Line 4 - Instrument Tubing Installation	180	29	83.89%	03-Jun-24 A	28-Feb-25	28-Sep-24	26-Oct-24	-125					
<b>Insulation</b>														
06-FGC-4-1010	PFab 2-Line 4 - Insulation	90	29	67.78%	15-Jun-24 A	28-Feb-25	28-Sep-24	26-Oct-24	-125					
<b>Precommissioning</b>														
06-FGC-4-1020	PFab 2-Line 4 - Pre-commissioning	60	60	0%	01-Mar-25	29-Apr-25	27-Oct-24	25-Dec-24	-125	Update Original Duration from 53d to 60d				
<b>PFab 2 - Line 5</b>														
<b>E&amp;I Installation</b>														
<b>Electrical</b>														
06-FGC-5-1250	PFab 2-Line 5 - Electrical Cable Pulling and Termination	180	60	66.67%	01-Aug-24 A	31-Mar-25	20-Sep-24	03-Jan-25	-87					
06-FGC-5-1260	PFab 2-Line 5 - Electrical Equipment Installation	180	60	66.67%	14-Aug-24 A	31-Mar-25	05-Nov-24	03-Jan-25	-87					
<b>Instrument</b>														
06-FGC-5-1280	PFab 2-Line 5 - Instrument Cable Pulling and Termination	180	60	66.67%	01-Aug-24 A	31-Mar-25	20-Sep-24	18-Nov-24	-133					
06-FGC-5-1290	PFab 2-Line 5 - Instrument Equipment Installation	180	60	66.67%	14-Aug-24 A	31-Mar-25	20-Sep-24	18-Nov-24	-133					
06-FGC-5-1300	PFab 2-Line 5 - Instrument Tubing Installation	180	60	66.67%	01-Aug-24 A	31-Mar-25	20-Sep-24	18-Nov-24	-133					
<b>Insulation</b>														
06-FGC-5-1200	PFab 2-Line 5 - Insulation	736	60	91.85%	30-Jun-22 A	31-Mar-25	20-Sep-24	18-Nov-24	-133					
<b>Precommissioning</b>														
06-FGC-5-1210	PFab 2-Line 5 - Pre-commissioning	60	60	0%	01-Apr-25	30-May-25	19-Nov-24	17-Jan-25	-133	Update Original Duration from 30d to 60d				
<b>PFab 2 - Line 6</b>														
<b>E&amp;I Installation</b>														
<b>Electrical</b>														
06-FGC-6-1260	PFab 2-Line 6 - Electrical Cable Pulling and Termination	180	60	66.67%	01-Aug-24 A	31-Mar-25	20-Sep-24	03-Jan-25	-87					
06-FGC-6-1270	PFab 2-Line 6 - Electrical Equipment Installation	180	60	66.67%	14-Aug-24 A	31-Mar-25	05-Nov-24	03-Jan-25	-87					
<b>Instrument</b>														
06-FGC-6-1290	PFab 2-Line 6 - Instrument Cable Pulling and Termination	180	60	66.67%	01-Aug-24 A	31-Mar-25	20-Sep-24	18-Nov-24	-133					
06-FGC-6-1300	PFab 2-Line 6 - Instrument Equipment Installation	180	60	66.67%	14-Aug-24 A	31-Mar-25	20-Sep-24	18-Nov-24	-133					
06-FGC-6-1310	PFab 2-Line 6 - Instrument Tubing Installation	180	60	66.67%	01-Aug-24 A	31-Mar-25	20-Sep-24	18-Nov-24	-133					
<b>Insulation</b>														
06-FGC-6-1020	PFab 2-Line 6 - Insulation	90	60	63.74%	23-Jun-24 A	31-Mar-25	20-Sep-24	18-Nov-24	-133					
<b>Precommissioning</b>														
06-FGC-6-1030	PFab 2-Line 6 - Pre-commissioning	60	60	0%	01-Apr-25	30-May-25	19-Nov-24	17-Jan-25	-133	Update Original Duration from 13d to 60d				
<b>Procurement for ACC Units</b>														
06-1190	Delivery to Site ACC-3	13	29	0%	19-Jan-25 A	28-Feb-25	07-Sep-24	05-Oct-24	-146	Update Actual Start Date				
<b>Procurement for Mechanical Treatment Plant Building Plant Equipment</b>														
06-1180	Delivery to Site	61	29	52.46%	01-May-24 A	28-Feb-25	14-Sep-24	12-Oct-24	-139					
<b>Procurement for Wastewater Treatment Plant Equipment</b>														
06-1220	Delivery to Site	90	16	82.22%	15-Jan-24 A	15-Feb-25	30-Oct-24	15-Nov-24	-93					
<b>Procurement for HV Transformers and Associated Equipment</b>														
<b>Procurement of IS Limiter</b>														
06-1270(7)	IS Limiter Design Approval (2.8.15.06.27)	120	29	75.83%	26-Sep-22 A	28-Feb-25	01-Sep-24	29-Sep-24	-152					
06-1280(7)	Manufacturing of IS Limiter	87	87	0%	01-Mar-25	26-May-25	30-Sep-24	25-Dec-24	-152					
<b>Procurement for Onshore Crane at Berth</b>														
06-1370	Factory Acceptance Test (FAT)	30	3	90%	01-Oct-24 A	02-Feb-25	02-Dec-24	04-Dec-24	-60	Update Actual Start Date				
06-1380	Delivery to Site	14	14	0%	03-Feb-25	16-Feb-25	05-Dec-24	18-Dec-24	-60					
<b>Procurement for Soft Landscape Materials</b>														
06-1790	Material Submission and Approval	60	60	0%	31-Jan-25	31-Mar-25	30-Aug-24	28-Oct-24	-154					
06-1800	Material Procurement & Nursery	140	140	0%	01-Apr-25	18-Aug-25	29-Oct-24	17-Mar-25	-154	Update Original Duration from 170d to 140d				
<b>Procurement for Weighbridge System</b>														
06-2240(1)	Delivery to Site (EIAC Equipment)	40	16	60%	29-Oct-24 A	15-Feb-25	27-Dec-24	11-Jan-25	-35					
<b>Procurement for Truck Wash System</b>														
06-2290(1)	Material Submission and Approval	29	29	0%	13-Feb-25	13-Mar-25	05-Nov-24	03-Dec-24	-100					
06-2300(1)	Material & Equipment Procurement	30	30	0%	14-Mar-25	12-Apr-25	04-Dec-24	02-Jan-25	-100	Update Original Duration from 45d to 30d				

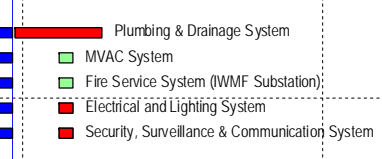
Activity ID	Activity Name	Original Duration	Remaining Duration	Activity % Complete	Current Start	Current Finish	Late Start	Late Finish	Total Float	M86 Remarks	2025			
											Jan 86	Feb 87	Mar 88	Apr 89
06-2310(1)	Factory Acceptance Test (FAT)	30	30	0%	14-Mar-25	12-Apr-25	04-Dec-24	02-Jan-25	-100	Update Original Duration from 45d to 30d				
06-2320(1)	Delivery to Site	30	30	0%	13-Apr-25	12-May-25	03-Jan-25	01-Feb-25	-100					
<b>Procurement for Hard Landscape Materials (Paving, Greening, Furniture and Lighting)</b>		151	120		20-Sep-23 A	30-May-25	07-Oct-24	03-Feb-25	-116					
06-7000(6)	Material Submission and Approval	60	60	0%	20-Sep-23 A	31-Mar-25	07-Oct-24	05-Dec-24	-116					
06-7010(6)	Material Procurement	60	60	0%	01-Apr-25	30-May-25	06-Dec-24	03-Feb-25	-116					
<b>Procurement for Curtain Wall Materials</b>		336	91		30-Apr-24 A	01-May-25	27-Jun-26	25-Sep-26	512					
06-8200(6D)	Material Submission and Approval	60	18	70%	30-Apr-24 A	17-Feb-25	27-Jun-26	14-Jul-26	512					
06-8210(6D)	Material & Equipment Procurement	90	46	15%	18-Oct-24 A	17-Mar-25	27-Jun-26	11-Aug-26	512					
06-8220(6D)	Factory Acceptance Test (FAT)	60	60	0%	01-Feb-25	01-Apr-25	28-Jun-26	26-Aug-26	512	Update Original Duration from 90d to 60d				
06-8230(6D)	Delivery to Site	90	90	0%	01-Feb-25	01-May-25	28-Jun-26	25-Sep-26	512					
<b>Off-site Precasting of Facade Panels</b>		800	97		14-Feb-23 A	07-May-25	27-Oct-24	06-Mar-25	-62					
06-8040(6D)	Procurement of Precast Concrete Wall Panel Moulding & Fabrication	205	46	77.56%	14-Feb-23 A	17-Mar-25	27-Oct-24	11-Dec-24	-96					
<b>Turbine Hall</b>		30	8		08-Nov-24 A	07-Feb-25	02-Feb-25	09-Feb-25	2					
06-8150	Delivery to Site	30	8	73.33%	08-Nov-24 A	07-Feb-25	02-Feb-25	09-Feb-25	2					
<b>Process Building</b>		90	50		21-Oct-24 A	21-Mar-25	05-Nov-24	24-Dec-24	-87					
06-8160	Precasting of Concrete Panels	60	15	75%	21-Oct-24 A	14-Feb-25	05-Nov-24	19-Nov-24	-87					
06-8170	Factory Acceptance Test (FAT)	60	35	41.67%	05-Nov-24 A	06-Mar-25	05-Nov-24	09-Dec-24	-87					
06-8180	Delivery to Site	60	50	16.67%	20-Nov-24 A	21-Mar-25	05-Nov-24	24-Dec-24	-87					
<b>Mechanical Treatment Plant</b>		60	60		31-Jan-25	31-Mar-25	27-Oct-24	25-Dec-24	-96					
06-8190	Precasting of Concrete Panels	37	37	0%	31-Jan-25	08-Mar-25	27-Oct-24	02-Dec-24	-96					
06-8200	Factory Acceptance Test (FAT)	30	30	0%	15-Feb-25	16-Mar-25	11-Nov-24	10-Dec-24	-96					
06-8210	Delivery to Site	30	30	0%	02-Mar-25	31-Mar-25	26-Nov-24	25-Dec-24	-96					
<b>Water Treatment Plant</b>		45	45		31-Jan-25	16-Mar-25	24-Nov-24	07-Jan-25	-68					
06-8310(M82)	Precasting of Concrete Panels	37	37	0%	31-Jan-25	08-Mar-25	24-Nov-24	30-Dec-24	-68					
06-8320(M82)	Factory Acceptance Test (FAT)	30	30	0%	15-Feb-25	16-Mar-25	09-Dec-24	07-Jan-25	-68					
06-8330(M82)	Delivery to Site	30	30	0%	15-Feb-25	16-Mar-25	09-Dec-24	07-Jan-25	-68					
<b>Administration Building</b>		35	35		25-Feb-25	31-Mar-25	26-Dec-24	29-Jan-25	-61					
06-8250	Precasting of Concrete Panels	21	21	0%	25-Feb-25	17-Mar-25	26-Dec-24	15-Jan-25	-61					
06-8260	Factory Acceptance Test (FAT)	21	21	0%	04-Mar-25	24-Mar-25	02-Jan-25	22-Jan-25	-61					
06-8270	Delivery to Site	14	14	0%	18-Mar-25	31-Mar-25	16-Jan-25	29-Jan-25	-61					
<b>Chimney</b>		97	97		31-Jan-25	07-May-25	30-Nov-24	06-Mar-25	-62					
06-8280	Steel Claddings Fabrication	67	67	0%	31-Jan-25	07-Apr-25	30-Nov-24	04-Feb-25	-62					
06-8290	Factory Acceptance Test (FAT)	60	60	0%	09-Mar-25	07-May-25	06-Jan-25	06-Mar-25	-62					
<b>Environmental Works</b>		365	123		01-Feb-24 A	02-Jun-25	08-Nov-24	10-Mar-25	-84					
<b>Baseline Air Quality Monitoring Works</b>		365	123		01-Feb-24 A	02-Jun-25	08-Nov-24	10-Mar-25	-84					
07-1220	Carry out baseline Air Quality monitoring at Portion 3 (Alternative Location)	365	123	66.3%	01-Feb-24 A	02-Jun-25	08-Nov-24	10-Mar-25	-84					
07-1240	Carry out baseline Air Quality monitoring at Portion 5	365	123	66.3%	01-Feb-24 A	02-Jun-25	08-Nov-24	10-Mar-25	-84					
<b>Maritime Works</b>		2050	161		30-Nov-19 A	10-Jul-25	21-Oct-24	27-Aug-25	48					
<b>Marine Construction</b>		2050	161		30-Nov-19 A	10-Jul-25	21-Oct-24	27-Aug-25	48					
<b>Phase I - Construction of Perimeter Seawalls</b>		2050	161		30-Nov-19 A	10-Jul-25	21-Oct-24	27-Aug-25	48					
<b>Seawall and Berth at DCM Area</b>		2050	161		30-Nov-19 A	10-Jul-25	21-Oct-24	26-Mar-25	-106					
<b>Seawall Structural Works</b>		2050	161		30-Nov-19 A	10-Jul-25	21-Oct-24	26-Mar-25	-106					
08-1115(3)	Caisson infill, Solid ballast, toe protection, precast concrete blocks ..etc Laying	250	8	96.68%	30-Nov-19 A	08-Feb-25	18-Nov-24	26-Nov-24	-73					
<b>Remain Works</b>		1370	161		10-Oct-21 A	10-Jul-25	21-Oct-24	26-Mar-25	-106					
08-1120	Construction of Seawall and Wave Wall Extension from +3mPD to Deck Level for Seawall A	220	12	94.55%	10-Oct-21 A	11-Feb-25	15-Nov-24	26-Nov-24	-77					
08-1120-1(6)	Construction of Seawall and Wave Wall Extension from +3mPD to Deck Level for Seawall B	220	3	98.81%	10-Oct-21 A	02-Feb-25	24-Nov-24	26-Nov-24	-68					
08-1120-2(M55)	Construction of Seawall and Wave Wall Extension from +3mPD to Deck Level for Seawall B No. C1 & C2 (Caisson A2 & I)	60	17	71.75%	28-Jun-23 A	16-Feb-25	06-Nov-24	22-Nov-24	-86					
08-1120-4(M55)	Construction of Seawall and Wave Wall Extension from +3mPD to Deck Level for Seawall B No. C73 & C734	60	11	81.51%	01-Dec-23 A	11-Feb-25	21-Oct-24	01-Nov-24	-101					
08-1320(6)	Construction of Rear Wall Buttress & Panel for Seawall A	150	150	0%	10-Feb-25	10-Jul-25	28-Oct-24	26-Mar-25	-106					
<b>Seawall at Dredging Area</b>		160	7		20-Jan-23 A	07-Feb-25	20-Aug-25	27-Aug-25	202					
<b>Remain Works</b>		160	7		20-Jan-23 A	07-Feb-25	20-Aug-25	27-Aug-25	202					
08-1170	Construction of Seawall and Wave Wall Extension from +3mPD to Deck Level (Bay 1 to Bay 8)	160	7	95.5%	20-Jan-23 A	07-Feb-25	20-Aug-25	27-Aug-25	202					
<b>Phase II - Reclamation, Breakwater and Berth Construction</b>		345	161		10-May-24 A	10-Jul-25	03-Nov-24	27-Aug-25	48					
<b>Breakwater</b>		120	120		12-Mar-25	10-Jul-25	30-Apr-25	27-Aug-25	48					
<b>Remain Works</b>		120	120		12-Mar-25	10-Jul-25	30-Apr-25	27-Aug-25	48					
08-1310(7)	Breakwater Profile Barrier and Pavement Road	120	120	0%	12-Mar-25	10-Jul-25	30-Apr-25	27-Aug-25	48					
<b>Seawall and Berth at Marine Access</b>		291	107		10-May-24 A	17-May-25	03-Nov-24	01-Jun-25	15					
<b>Remain Works</b>		30	24		10-May-24 A	23-Feb-25	03-Nov-24	26-Nov-24	-89					
08-1330(2)	Construction of Seawall and Wave Wall Extension from +3mPD to Deck Level	30	24	20%	10-May-24 A	23-Feb-25	03-Nov-24	26-Nov-24	-89					
<b>Fire Boat Access</b>		90	90		16-Feb-25	17-May-25	03-Mar-25	01-Jun-25	15					
08-2500(6D)	Construction of Fire Boat Access	90	90	0%	16-Feb-25	17-May-25	03-Mar-25	01-Jun-25	15					
<b>Foundation Works</b>		596	80		05-Aug-23 A	20-Apr-25	06-Sep-24	24-Jan-25	-86					
<b>Sky Deck Foundation</b>		82	28		23-Jun-24 A	28-Feb-25	06-Sep-24	04-Oct-24	-146					
<b>Sky Deck Pile Caps Construction</b>		82	28		23-Jun-24 A	28-Feb-25	06-Sep-24	04-Oct-24	-146					
09-2730(M62)	Excavation to Pile Cap Formation	21	14	32%	23-Jun-24 A	14-Feb-25	06-Sep-24	20-Sep-24	-146					
09-2740(M62)	Pile Cut-off & Capping Plate (2 Welders @ 2nr/d)	21	12	41%	03-Jul-24 A	21-Feb-25	15-Sep-24	27-Sep-24	-146					
09-2750(M62)	Pile Caps Construction	30	23	25%	27-Aug-24 A	28-Feb-25	12-Sep-24	04-Oct-24	-146					
<b>Process Building - Waste Bunker &amp; Tipping Hall Bid Foundation</b>		26	2		05-Aug-23 A	02-Feb-25	02-Oct-24	04-Oct-24	-121					
<b>Process Building Pile Cap Construction</b>		26	2		05-Aug-23 A	02-Feb-25	02-Oct-24	04-Oct-24	-121					
<b>Pile Cap Stage 3 (Module 3 Between Grid PB22 to PB32)</b>		26	2		05-Aug-23 A	02-Feb-25	02-Oct-24	04-Oct-24	-121					
<b>Process Building (Module 3) WWTP</b>		26	2		05-Aug-23 A	02-Feb-25	02-Oct-24	04-Oct-24	-121					

Activity ID	Activity Name	Original Duration	Remaining Duration	Activity % Complete	Current Start	Current Finish	Late Start	Late Finish	Total Float	M86 Remarks	2025			
											Jan 86	Feb 87	Mar 88	Apr 89
09-1260	Pile Caps and Raft Foundation Construction (60m x 24m 4set@100m2/7day)	26	2	92.12%	05-Aug-23 A	02-Feb-25	02-Oct-24	04-Oct-24	-121					
<b>ACC Equipment Foundation</b>														
<b>ACC Pile Cap Construction</b>														
09-1720-1(M58)	On-grade Slab Construction Grid ACA-ACG, AC3-AC4	22	22	0%	31-Jan-25	21-Feb-25	19-Oct-24	09-Nov-24	-104					
<b>Reception Pavilion Foundation</b>														
09-2100	Formation, Compaction & Raft Foundation Construction	30	30	0%	11-Feb-25	13-Mar-25	12-Nov-24	11-Dec-24	-91					
<b>Weighbridge Foundation</b>														
09-2710(6F)	Excavation & Construction of Weighbridge Bays and Cast-in bolts	21	21	0%	31-Mar-25*	20-Apr-25	22-Dec-24	11-Jan-25	-99					
<b>External Water Tank Foundations</b>														
09-3050	Reuse Water Tanks and Water Cannon Water Tank Foundation (approx. 390m3)	21	6	70%	07-Dec-24 A	07-Feb-25	18-Jan-25	24-Jan-25	-13					
<b>Superstructure Works</b>														
<b>Administration &amp; Viewing Gallery Bld Structure</b>														
10-1070	Roof Parapet and Dog House	21	21	0%	31-Jan-25	20-Feb-25	09-Jan-25	29-Jan-25	-22					
10-1080(M63)	Facade Structural Frame Installation	60	60	0%	31-Jan-25	31-Mar-25	01-Dec-24	29-Jan-25	-61					
<b>Sky Deck Structure</b>														
10-2310 (M55)	Construction of RC Column (16nr, 0.9m Dia x 11m, 3 pours @ 5d/pour with 4 formwork sets)	60	60	0%	13-Feb-25	14-Apr-25	20-Sep-24	18-Nov-24	-146					
10-2315 (7)	Beam & Slab to Deck Level app.+18mPD (appx. 600m3)	30	30	0%	05-Apr-25	05-May-25	10-Nov-24	09-Dec-24	-146					
<b>Process Building - Waste Bunker &amp; Tipping Hall Bld Structure</b>														
<b>Waste &amp; Ash Bunker Bld Structure</b>														
<b>Process Building Waste &amp; Ash Bunker Bld Structural Steel Roof</b>														
10-2080-01(M81)	Module 2 Bunker Steel Roof Erection	40	16	61%	27-Dec-24 A	15-Feb-25	26-Nov-24	11-Dec-24	-66					
10-2080-02(M81)	Module 3 Bunker Steel Roof Erection	40	40	0%	15-Feb-25	27-Mar-25	12-Dec-24	20-Jan-25	-66					
10-2080-03(M85)	Module 1 Bunker Steel Roof Modification Works	30	14	53.33%	31-Dec-24 A	13-Feb-25	13-Nov-24	26-Nov-24	-79	Update Actual Start Date				
10-2220(7)	Module 1 Bunker Roof Cladding Installation	35	21	40%	30-Nov-24 A	28-Feb-25	21-Nov-24	11-Dec-24	-79	Change Relationship from Predecessor 10-2080-03(M85) from FS0 to FF15				
10-2220-1(M81)	Module 2 Bunker Roof Cladding Installation	30	30	0%	01-Mar-25	30-Mar-25	12-Dec-24	10-Jan-25	-79					
10-2220-2(M81)	Module 3 Bunker Roof Cladding Installation	30	30	0%	31-Mar-25	29-Apr-25	11-Jan-25	09-Feb-25	-79					
<b>Process Building Waste &amp; Ash Bunker Bld Structure Between Bunker 1 and 2</b>														
10-2410 (M78)	Beam & Slab to +11.58mPD and +12.4mPD	11	11	0%	31-Jan-25	10-Feb-25	24-Oct-24	03-Nov-24	-99					
<b>Process Building Waste &amp; Ash Bunker Bld Structure Between Bunker 2 and 3</b>														
10-2480 (M78)	Beam & Slab to +11.58mPD and +12.4mPD	11	11	0%	31-Jan-25	10-Feb-25	06-Oct-24	16-Oct-24	-117					
<b>Process Building Waste &amp; Ash Bunker Bld Misc. Steel Structure</b>														
10-2330 (M63)	Facade Structural Frame Installation at Module 1 (East & North Side)	30	26	12.5%	17-Nov-24 A	26-Feb-25	05-Nov-24	01-Dec-24	-87					
10-2340 (M63)	Facade Structural Frame Installation at Module 2 (North Side)	20	20	0%	26-Feb-25	18-Mar-25	16-Dec-24	04-Jan-25	-72					
10-2350 (M63)	Facade Structural Frame Installation at Module 3 (North & West Side)	30	30	0%	18-Mar-25	17-Apr-25	05-Jan-25	03-Feb-25	-72					
10-2360-2(M81)	Waste Crane Runway Beam at Module 2	35	5	85.71%	19-Nov-24 A	04-Feb-25	26-Nov-24	01-Dec-24	-66	Amend Activity Name				
10-2360-3(M81)	Waste Crane Runway Beam at Module 3	53	53	0%	05-Feb-25	29-Mar-25	12-Dec-24	02-Feb-25	-55	Amend Activity Name				
10-2360-5(M81)	Ash Crane Runway Beam at Module 2	36	36	0%	14-Feb-25	21-Mar-25	21-Oct-24	25-Nov-24	-116	Amend Activity Name				
10-2360-6(M81)	Ash Crane Runway Beam at Module 3	36	36	0%	22-Mar-25	26-Apr-25	26-Nov-24	31-Dec-24	-116	Amend Activity Name				
<b>Process Building - Boiler &amp; Flue Gas Treatment Bld Structure</b>														
<b>Steel Structure</b>														
<b>Boiler Building Steel Structure</b>														
<b>Process Building (Module 2) Steel Structure Erection</b>														
10-1680	Roof Cladding Installation	60	45	66.33%	25-Oct-23 A	16-Mar-25	17-Dec-24	30-Jan-25	-45					
<b>Process Building (Module 3) Process Building Steel Structure Erection</b>														
10-1720	Roof Cladding Installation	60	47	30%	12-Dec-23 A	18-Mar-25	15-Dec-24	30-Jan-25	-47					
<b>Process Building Internal Partition Wall and Staircase</b>														
10-1850	RC Partition and Staircase at Module 1	90	41	54%	09-Nov-24 A	13-Mar-25	09-Nov-24	20-Dec-24	-82					
10-1860	RC Partition and Staircase at Module 2	69	69	0%	31-Jan-25*	09-Apr-25	01-Jan-25	10-Mar-25	-30					
10-1870	RC Partition and Staircase at Module 3	69	69	0%	31-Jan-25*	09-Apr-25	06-Jan-25	15-Mar-25	-25					
<b>Chimney Structure</b>														
10-2060-1	Chimney Roof Slab (47th Pour)	40	40	0%	23-Feb-25	04-Apr-25	20-Mar-25	29-Apr-25	25					
<b>Mechanical Treatment Plant Bld Structure</b>														
10-2095	Column & Wall to +13.5mPD	21	3	84%	08-May-24 A	03-Feb-25	07-Sep-24	10-Sep-24	-145					
10-2096	1/F Slab @+13.5mPD	21	1	97%	05-Aug-24 A	03-Feb-25	10-Sep-24	10-Sep-24	-145					
10-2100	Column & Wall to +17.5mPD	21	2	90%	25-Aug-24 A	03-Feb-25	10-Sep-24	12-Sep-24	-143					
10-2110	2/F Slab @+17.5mPD	21	4	83%	30-Sep-24 A	03-Feb-25	09-Oct-24	12-Oct-24	-114					
10-2120	Column & Wall to +23.0mPD	21	8	60%	27-Nov-24 A	08-Feb-25	04-Oct-24	12-Oct-24	-118					
10-2130	3/F Slab @+23.0mPD	21	9	55%	04-Dec-24 A	09-Feb-25	03-Oct-24	12-Oct-24	-119					
10-2135(7C)	Heli Pad @+26.5mPD	21	21	0%	09-Feb-25	02-Mar-25	13-Oct-24	02-Nov-24	-119	New Activity				
10-2140	Column & Wall to +27.28mPD	21	21	0%	25-Feb-25	18-Mar-25	29-Oct-24	18-Nov-24	-119	Remove Predecessor 10-2130 FS0; Add Predecessor 10-2135(7C) FS0				
10-2150	Roof Slab @+27.28mPD	21	21	0%	13-Mar-25	03-Apr-25	14-Nov-24	04-Dec-24	-119	Change relationship to Successor 12-1430 from FF11 to FF0; Change Relationship from Predecessor from FS0 to FS-5				
10-2160	Roof Parapet Wall	21	21	0%	03-Apr-25	24-Apr-25	05-Dec-24	25-Dec-24	-119					
<b>Elevated Drive Way and Associated Structures</b>														
<b>Elevated Drive Way RSA to RSG (FS Control Rm &amp; Vehicle Washing Facility)</b>														
10-2250(M57)	Wall & Column to +17.5 Ramp Level	30	3	90%	12-Oct-24 A	02-Feb-25	24-Oct-24	27-Oct-24	-98					
10-2260(M57)	Beam & Slab to +17.5 Ramp Level	21	4	80%	15-Nov-24 A	07-Feb-25	27-Oct-24	31-Oct-24	-98					
10-2270(M57)	Truck Washing Facility House Column and Roof Slab to +28mPD	70	70	0%	22-Feb-25	03-May-25	24-Nov-24	01-Feb-25	-90	Update Original Duration from 90d to 70d				
10-2300(M57)	Parapet Wall	30	15	50%	14-Dec-24 A	30-Mar-25	14-Jun-25	28-Jun-25	90					

Activity ID	Activity Name	Original Duration	Remaining Duration	Activity % Complete	Current Start	Current Finish	Late Start	Late Finish	Total Float	M86 Remarks	2025			
											Jan 86	Feb 87	Mar 88	Apr 89
<b>Elevated Drive Way RSG to RSX (Transform Room)</b>														
10-2320(M57)	Wall & Column to +12.5mPD Mezzanine Level	21	44	65%	22-Sep-24 A	30-Mar-25	16-Nov-24	13-Jan-25	-76					
10-2330(M57)	Beam & Slab to +12.5mPD Mezzanine Level	21	49	60%	13-Oct-24 A	20-Mar-25	18-Nov-24	05-Jan-25	-74					
10-2340(M57)	Wall & Column to +17.5 Ramp Level	21	58	65%	19-Nov-24 A	29-Mar-25	17-Nov-24	13-Jan-25	-75					
10-2350(M57)	Beam & Slab to +17.5 Ramp Level	21	59	65%	21-Nov-24 A	30-Mar-25	16-Nov-24	13-Jan-25	-76					
<b>Elevated Drive Way RSX to RSAB</b>														
10-2440(M81)	Wall & Column to +17.5 Ramp Level	14	60	78.57%	28-Jan-25 A	31-Mar-25	30-Dec-24	27-Feb-25	-32	Update Actual Start Date				
<b>Elevated Drive Way RSAB to RSAF</b>														
10-2360(M57)	G/F Base Slab	45	5	90%	15-Apr-24 A	04-Feb-25	18-Nov-24	22-Nov-24	-74					
10-2370(M57)	Wall & Column to +13mPD Mezzanine Level	45	6	86.67%	20-Apr-24 A	05-Feb-25	03-Dec-24	08-Dec-24	-59					
10-2380(M57)	Beam & Slab to +13mPD Mezzanine Level	30	21	30%	10-May-24 A	20-Feb-25	18-Nov-24	08-Dec-24	-74					
10-2390(M57)	Wall & Column to +17.5 Ramp Level	30	21	30%	17-May-24 A	20-Feb-25	18-Nov-24	08-Dec-24	-74					
10-2400(M57)	Beam & Slab to +17.5 Ramp Level	30	30	0%	20-May-24 A	01-Mar-25	09-Nov-24	08-Dec-24	-83					
<b>Reception Pavilion Structure</b>														
10-2280	Reception Pavilion RC Structure Construction	30	30	0%	13-Mar-25	12-Apr-25	12-Dec-24	10-Jan-25	-91					
10-2290	Roof	30	30	0%	15-Apr-25	15-May-25	14-Jan-25	12-Feb-25	-91					
<b>Vehicle Fuel Filling Station</b>														
10-2450(6D)	Filling Station Structure Construction	30	30	0%	31-Jan-25	01-Mar-25	24-Oct-24	22-Nov-24	-99					
<b>Vessel Offloading Point</b>														
08-2420(7)	Vehicle Ferry Ramp Installation	59	59	0%	11-Feb-25	11-Apr-25	02-Nov-24	30-Dec-24	-101	Update Original Duration from 74d to 59d				
<b>Weighbridge Kiosk</b>														
08-2430(M79)	Construction of Weighbridge Kiosk	30	30	0%	01-Mar-25	30-Mar-25	22-Nov-24	21-Dec-24	-99	Change Relationship from Predecessor 05-4910 from FF14 to FS0				
<b>ACC Yard</b>														
13-2000	Delivery and Erection of ACC Steel Structure & Steel Structure Support of Condensate Tank (Module 1)	90	15	83.33%	31-Mar-24 A	14-Feb-25	17-Sep-24	01-Oct-24	-136					
13-2040	Delivery and Erection of ACC Steel Structure & Steel Structure Support of Condensate Tank (Module 2)	90	86	5%	24-Oct-24 A	26-Apr-25	17-Sep-24	11-Dec-24	-136					
13-2080	Delivery and Erection of ACC Steel Structure & Steel Structure Support of Condensate Tank (Module 3)	80	80	0%	14-Feb-25	04-May-25	21-Sep-24	09-Dec-24	-146	Revised duration to 80d				
<b>Misc. External Structures</b>														
10-2440	Reuse Water Tanks, Water Cannon Water Tank Erection & pipe connection to Pump Room	45	45	0%	07-Feb-25	24-Mar-25	25-Jan-25	10-Mar-25	-13					
10-2450	Seawater Intake Structure RC Works above +6.5mPD	30	26	13.33%	15-Nov-24 A	25-Feb-25	21-Oct-24	15-Nov-24	-102					
10-2460	Seawater Intake Structure Steel Roof Erection	30	30	0%	26-Feb-25	27-Mar-25	16-Nov-24	15-Dec-24	-102					
<b>Architectural Builders Works &amp; Finishes</b>														
<b>Administration &amp; Viewing Gallery Bld ABWF Works</b>														
11-1030	Internal Wall, Door and Floor Finishes	150	150	0%	18-Feb-25	18-Jul-25	31-Dec-24	29-May-25	-50					
11-1050	Roof Waterproofing	30	30	0%	21-Feb-25	22-Mar-25	30-May-25	28-Jun-25	98	Renamed Activity. Remove Predecessor 11-1050-1(M63) FS0. Change Relationship from Predecessor 05-4760 from FS0 to FF0				
11-1050-1(M63)	Facade Panels Erection (130pcs. @4pc/day)	30	30	0%	01-Apr-25	30-Apr-25	30-Jan-25	28-Feb-25	-61					
<b>Process Building - Waste Bunker &amp; Tipping Hall Bld ABWF Works</b>														
11-1060	Door, Roller Shutter, Windows and Louvers Installation	180	127	29.44%	02-Nov-24 A	06-Jun-25	22-Feb-25	28-Jun-25	22					
11-1070	Metal Railings, Platforms, Gratings, Cable trench covers Installations	90	90	0%	31-Jan-25	30-Apr-25	31-Mar-25	28-Jun-25	59					
11-1080	Internal Wall and Floor Finishes	230	127	20%	20-Nov-23 A	06-Jun-25	22-Oct-24	25-Feb-25	-101					
11-1090	False ceiling and Raise Floor installation (in CCR)	45	23	50%	17-Dec-24 A	22-Feb-25	22-Oct-24	13-Nov-24	-101					
11-1100	External Finishes, Curtain Walls and Roof Waterproofing	90	25	72%	20-Feb-24 A	25-Feb-25	25-Nov-24	20-Dec-24	-66					
11-1530(M63)	Facade Panels Erection at Bunker	51	75	1%	27-Nov-24 A	15-Apr-25	05-Nov-24	18-Jan-25	-87					
11-1550(M63)	Facade Panels Erection at Tipping Hall	51	51	0%	16-Apr-25	05-Jun-25	19-Jan-25	10-Mar-25	-87					
11-1550(M63)10	WWTP DG Stores Finish (Door, Louver, Bund Wall, Floor etc.)	60	60	0%	31-Jan-25	31-Mar-25	28-Oct-24	26-Dec-24	-95					
11-1550(M63)20	Process Analysis Cabinet (DG Cabinet)	60	60	0%	31-Jan-25	31-Mar-25	28-Oct-24	26-Dec-24	-95					
<b>Process Building - Boiler &amp; Flue Gas Bld ABWF Works</b>														
11-1110	Door, Roller Shutter, Windows and Louvers Installation (Module 1)	60	60	0%	13-Mar-25	12-May-25	03-Apr-25	01-Jun-25	21	Renamed Activity, removed predecessor 11-1540(M63), 11-1550(M63), 10-1860 and 10-1870				
11-1120	Metal Railings, Staircase Access Platforms & Gratings Installations (ST-5 to ST-9)	60	60	0%	17-Mar-25	15-May-25	03-Apr-25	01-Jun-25	17	Renamed Activity				
11-1130	Wall and Floor Finishes (Module 1)	180	60	66.67%	01-Aug-24 A	09-Apr-25	15-Jan-25	15-Mar-25	-25	Renamed Activity				
11-1130-1(7C)	Wall and Floor Finishes (Module 2&3)	60	60	0%	10-Apr-25	08-Jun-25	28-Jul-26	25-Sep-26	474	New Activity				
11-1140	Curtain Walls and Roof at Viewing Gallery	90	90	0%	31-Jan-25	30-Apr-25	11-Dec-24	10-Mar-25	-51	Renamed Activity				
11-1530(M63)	Facade Panels Erection for Module 1 (658pcs. @8pcs/d)	83	64	22.7%	27-Dec-24 A	05-Apr-25	07-Dec-24	09-Feb-25	-54					
11-1540(M63)	Facade Panels Erection for Module 2 (344pcs. @4pcs/d)	86	86	0%	26-Mar-25	20-Jun-25	23-Apr-25	17-Jul-25	28					
<b>Turbine Hall Bld ABWF Works</b>														
<b>Electrical Bld ABWF Works</b>														
11-1150	Door, Windows and Louvers Installation	50	45	10%	05-Dec-24 A	16-Mar-25	13-Sep-24	27-Oct-24	-140					
11-1160	Metal Railings, Platforms, Gratings, Cable trench covers Installations	90	16	81.78%	15-Apr-24 A	16-Feb-25	26-Sep-24	12-Oct-24	-126					
11-1170	Internal Wall and Floor Finishes	90	5	95%	09-Dec-23 A	04-Feb-25	08-Oct-24	12-Oct-24	-115					
11-1180	False ceiling and Raise Floor installation	40	40	0%	31-Jan-25	11-Mar-25	18-Sep-24	27-Oct-24	-135					
11-1190	Roof Waterproofing	60	57	5%	17-Jan-25 A	28-Mar-25	03-May-25	28-Jun-25	92	Update Actual Start Date: Change Relationship from Predecessor 11-1150 from FS0 to FF0				
11-1540	Facade Panels Erection (167pcs. @8pcs/d)	23	20	14%	27-Sep-24 A	19-Feb-25	23-Sep-24	12-Oct-24	-130					
<b>Turbine Hall ABWF Works</b>														
11-1200	Door, Roller Shutter, Windows and Louvers Installation	60	60	0%	09-Feb-25	10-Apr-25	16-Dec-24	13-Feb-25	-55					
11-1210	Metal Railings, Platforms, Gratings, Cable trench covers Installations	60	60	0%	31-Jan-25	31-Mar-25	05-Sep-24	03-Nov-24	-148					
11-1220	Internal Wall and Floor Finishes for remain area	60	60	0%	31-Jan-25	31-Mar-25	17-Oct-24	15-Dec-24	-106					
11-1240	Roof Waterproofing	60	60	0%	10-Apr-25	09-Jun-25	30-Apr-25	28-Jun-25	20					
11-1540-1(M63)	Facade Structural Frame Erection	22	9	57%	30-Sep-24 A	09-Feb-25	03-Oct-24	12-Oct-24	-119					

Activity ID	Activity Name	Original Duration	Remaining Duration	Activity % Complete	Current Start	Current Finish	Late Start	Late Finish	Total Float	M86 Remarks	2025			
											Jan 86	Feb 87	Mar 88	Apr 89
11-1550	Facade Panels Erection (207pcs. @4pcs/d)	51	39	23%	16-Jan-25 A	11-Mar-25	22-Dec-24	30-Jan-25	-39	Change Relationship from Predecessor 11-1540-1(M63) from FSO to FF0: Update Actual Start Date	Facade Panels Erection (207pcs. @4pcs/d)			
<b>Compressor &amp; CCCW Bld ABWF Works</b>														
11-1250	Door, Roller Shutter, Windows and Louvers Installation	90	90	0%	31-Jan-25	30-Apr-25	31-Mar-25	28-Jun-25	59					
11-1260	Metal Railings, Platforms, Gratings, Cable trench covers Installations	90	90	0%	31-Jan-25	30-Apr-25	31-Mar-25	28-Jun-25	59					
11-1270	Internal Wall and Floor Finishes	90	90	0%	31-Jan-25	30-Apr-25	31-Mar-25	28-Jun-25	59					
11-1280	False ceiling and Raise Floor installation	90	90	0%	31-Jan-25	30-Apr-25	31-Mar-25	28-Jun-25	59					
11-1290	External Finishes and Roof Waterproofing	90	90	0%	31-Jan-25	30-Apr-25	31-Mar-25	28-Jun-25	59					
<b>Chimney ABWF Works</b>														
11-1000	Installation of Metal Staircase, Railings, Lift Shaft	26	23	10%	13-Jan-25 A	23-Feb-25	10-Dec-24	02-Jan-25	-51		Installation of Metal Staircase, Railings, Lift Shaft			
11-1490	Door and Windows Installation	60	60	0%	31-Jan-25	31-Mar-25	04-Nov-24	02-Jan-25	-88		Door and Windows Installation			
11-1500	Internal Wall and Floor Finishes	30	30	0%	31-Jan-25	01-Mar-25	23-Oct-24	21-Nov-24	-100		Internal Wall and Floor Finishes			
<b>Mechanical Treatment Plant &amp; Water Treatment Plant Bld ABWF Works</b>														
<b>Mechanical Treatment Plant ABWF Works</b>														
11-1310	Metal Railings, Platforms, Gratings, Cable trench covers Installations	120	120	0%	05-Mar-25	03-Jul-25	26-Nov-24	25-Mar-25	-99					
11-1320	Internal Wall and Floor Finishes	120	120	0%	05-Mar-25	03-Jul-25	12-Nov-24	11-Mar-25	-113					
11-1330	External Finishes, Curtain Walls and Roof Waterproofing	90	63	30%	06-Jan-25 A	22-Apr-25	22-Jan-25	25-Mar-25	-27	Update Actual Start Date	External Fin			
11-1330-1(M63)	Facade Structural Frame Erection	136	136	0%	05-Mar-25	19-Jul-25	11-Oct-24	23-Feb-25	-145					
<b>Water Treatment Plant ABWF Works</b>														
11-1600(7)	Door, Roller Shutter, Windows and Louvers Installation	60	60	0%	09-Mar-25	07-May-25	11-Dec-24	08-Feb-25	-88					
11-1610(7)	Metal Railings, Platforms, Gratings, Cable trench covers Installations	90	90	0%	31-Jan-25	30-Apr-25	11-Nov-24	08-Feb-25	-81					
11-1620(7)	Internal Wall and Floor Finishes	90	90	0%	03-Feb-25	04-May-25	11-Nov-24	08-Feb-25	-85					
11-1630(7)	External Finishes, and Roof Waterproofing	90	90	0%	11-Feb-25	12-May-25	11-Nov-24	08-Feb-25	-93					
11-1640(7)	Facade Structural Frame Erection	90	90	0%	31-Jan-25	30-Apr-25	04-Nov-24	01-Feb-25	-88					
11-1650(7)	Facade Panels Erection (272pcs. @8pcs/d)	60	60	0%	09-Mar-25	07-May-25	11-Dec-24	08-Feb-25	-88					
<b>IWMF Substation ABWF Works</b>														
11-1340	Windows and Louvers Installation	60	8	86.67%	18-Dec-23 A	07-Feb-25	03-Mar-25	10-Mar-25	31		Windows and Louvers Installation			
11-1350	Gratings, Cable trench covers Installations	90	15	83.33%	27-Dec-23 A	14-Feb-25	14-Jun-25	28-Jun-25	134	Renamed	Gratings, Cable trench covers Installations			
11-1360	Internal Wall and Floor Finishes	90	5	95%	27-Sep-23 A	04-Feb-25	18-Oct-24	22-Oct-24	-105		Internal Wall and Floor Finishes			
11-1380	Roof Waterproofing	86	15	82.33%	06-May-24 A	15-Feb-25	13-Feb-25	28-Feb-25	14	Renamed	Roof Waterproofing			
11-1380-1(7C)	External Paint Finish	60	60	0%	15-Feb-25	16-Apr-25	01-Mar-25	29-Apr-25	14	New Activity	External Paint Finish			
11-1380-2(7C)	Green Wall Planter Installation	60	60	0%	16-Apr-25	15-Jun-25	30-Apr-25	28-Jun-25	14	New Activity				
11-1510(7C)	Doors, Roller Shutter	60	60	0%	31-Jan-25	31-Mar-25	03-Apr-25	01-Jun-25	62	New Activity	Doors, Roller Shutter			
<b>Elevated Drive Way and Associated Structures ABWF Works</b>														
11-1430	External Finishes and Roof Waterproofing	132	132	0%	21-Feb-25	03-Jul-25	17-Feb-25	28-Jun-25	-5					
<b>Elevated Drive Way RSA to RSG</b>														
11-1390	Door, Roller Shutter, Windows and Louvers Installation	30	30	0%	28-Feb-25	30-Mar-25	31-Mar-25	29-Apr-25	31		Door, Roller Shutter, Windows and Louvers Installati			
11-1400	Metal Railings, Platforms, Gratings, Cable trench covers Installations	50	50	0%	07-Feb-25	29-Mar-25	01-Nov-24	20-Dec-24	-98	Update Original Duration from 60d to 50d	Metal Railings, Platforms, Gratings, Cable trench cover			
11-1410	Internal Wall and Floor Finishes	60	60	0%	21-Feb-25	22-Apr-25	15-Nov-24	13-Jan-25	-99		Internal Wa			
11-1420	False ceiling and Raise Floor installation	60	60	0%	07-Mar-25	06-May-25	30-Apr-25	28-Jun-25	53		False ceiling and Raise Fl			
<b>Elevated Drive Way RSG to RSU</b>														
11-1390-1(M76)	Door, Roller Shutter, Windows and Louvers Installation	30	30	0%	28-Feb-25	30-Mar-25	27-Aug-26	25-Sep-26	544		Door, Roller Shutter, Windows and Louvers Installati			
11-1400-1(M76)	Metal Railings, Platforms, Gratings, Cable trench covers Installations	60	60	0%	31-Jan-25	31-Mar-25	30-Apr-25	28-Jun-25	89		Metal Railings, Platforms, Gratings, Cable trench o			
11-1410-1(M76)	Internal Wall and Floor Finishes	60	60	0%	31-Jan-25	31-Mar-25	15-Nov-24	13-Jan-25	-77		Internal Wall and Floor Finishes			
11-1420-1(M76)	False ceiling and Raise Floor installation	60	60	0%	14-Feb-25	14-Apr-25	30-Apr-25	28-Jun-25	75		False ceiling and Raise Fl			
<b>Elevated Drive Way RSU to RSAF</b>														
11-1390-2(M76)	Door, Roller Shutter, Windows and Louvers Installation	30	30	0%	23-Mar-25	21-Apr-25	27-Aug-26	25-Sep-26	522		Door, Roller S			
11-1400-2(M76)	Metal Railings, Platforms, Gratings, Cable trench covers Installations	60	60	0%	23-Mar-25	21-May-25	30-Apr-25	28-Jun-25	38					
11-1410-2(M76)	Internal Wall and Floor Finishes	60	60	0%	23-Mar-25	21-May-25	30-Dec-24	27-Feb-25	-83					
11-1420-2(M76)	False ceiling and Raise Floor installation	60	60	0%	06-Apr-25	04-Jun-25	30-Apr-25	28-Jun-25	24					
<b>Seawater Intake Chamber ABWF Works</b>														
11-1670(7)	Floor, wall and ceiling finishes	30	30	0%	26-Feb-25	27-Mar-25	24-Nov-24	23-Dec-24	-94		Floor, wall and ceiling finishes			
11-1680(7)	Steel platforms, metal covers, cat ladder and staircase	30	30	0%	13-Mar-25	11-Apr-25	01-Dec-24	30-Dec-24	-102	Add Successor 16-1300 FS-3 ; Remove Successor 13-2540-2(7) FF0	Steel platforms, metal covers, c			
11-1690(7)	Roller Shutter installation	30	30	0%	13-Mar-25	11-Apr-25	23-Dec-24	21-Jan-25	-80		Roller Shutter installation			
<b>Building Services Installation</b>														
<b>Administration &amp; Viewing Gallery Bld BS Works</b>														
12-1000	Plumbing & Drainage System	120	72	40%	21-Oct-24 A	30-Apr-25	16-Feb-25	28-Apr-25	-2					
12-1010	MVAC System	120	120	0%	31-Jan-25	30-May-25	28-Dec-24	26-Apr-25	-34		MVAC & OCS System			
12-1020	Fire Service System (Admin building)	120	50	58%	15-Sep-24 A	31-Mar-25	11-Jun-25	31-Jul-25	122		Fire Service System (Admin building)			
12-1030	Electrical and Lighting System	150	105	30%	15-Sep-24 A	15-May-25	18-Apr-26	31-Jul-26	442					
12-1040	CCTV & Surveillance System	150	71	53%	05-Nov-24 A	11-Apr-25	17-Feb-25	28-Apr-25	18		CCTV & Surveillance System			
12-1050	FS Lift & Escalator Installation	60	60	0%	01-Apr-25	30-May-25	11-Jun-26	09-Aug-26	436		FS Lift Installation (VG-L1)			
12-1050-1(5A)	Installation & Commissioning Test of Education facilities	60	60	0%	02-Apr-25	31-May-25	28-Aug-25	26-Oct-25	148					
<b>Process Building - Waste Bunker &amp; Tipping Hall Bld BS Works</b>														
12-1060	Plumbing & Drainage System	180	112	38%	11-Oct-23 A	22-May-25	07-Jan-25	28-Apr-25	-24					
12-1070	MVAC & OCS System	120	46	36%	14-Oct-23 A	17-Mar-25	11-Nov-24	26-Dec-24	-81		MVAC & OCS System			
12-1080	Fire Service System (Waste Bunker and Tipping Hall)	180	99	45%	11-Oct-23 A	09-May-25	02-Dec-24	10-Mar-25	-60					
12-1090	Electrical and Lighting System	180	117	35%	18-Oct-23 A	27-May-25	07-Nov-24	03-Mar-25	-85					
12-1100	Security, Surveillance & Communication System	180	68	45%	25-Apr-24 A	08-Apr-25	07-Nov-24	13-Jan-25	-85		Security, Surveillance & Communica			
12-1680(7C)	FS Lift Installation (VG-L1)	60	60	0%	31-Jan-25	31-Mar-25	17-Mar-25	15-May-25	45		FS Lift Installation (VG-L1)			
<b>Process Building - Boiler &amp; Flue Gas Bld BS Works</b>														
12-1110	Plumbing & Drainage System	180	60	66.67%	11-Oct-23 A	31-Mar-25	22-Nov-24	20-Jan-25	-70		Plumbing & Drainage System			

Activity ID	Activity Name	Original Duration	Remaining Duration	Activity % Complete	Current Start	Current Finish	Late Start	Late Finish	Total Float	M86 Remarks	2025			
											Jan 86	Feb 87	Mar 88	Apr 89
12-1120	MVAC System (Module 1 Area)	180	90	50%	14-Oct-23 A	30-Apr-25	27-Jan-25	26-Apr-25	-4					
12-1120-1(7C)	MVAC System (Module 2 & 3 Area)	60	60	0%	10-Apr-25	08-Jun-25	02-Jun-25	31-Jul-25	53					
12-1130	Fire Service System (Module 1 Area)	180	99	45%	11-Oct-23 A	09-May-25	02-Dec-24	10-Mar-25	-60					
12-1130-1(7C)	Fire Service System (Module 2 & 3 Areas)	90	90	0%	11-Mar-25	08-Jun-25	03-May-25	31-Jul-25	53					
12-1140	Electrical and Lighting System	180	105	41.67%	18-Oct-23 A	15-May-25	17-Nov-24	01-Mar-25	-75					
12-1150	Security, Surveillance & Communication System	180	70	43.89%	25-Apr-24 A	10-Apr-25	05-Nov-24	13-Jan-25	-87					
12-1160	FS Lift Installation (PB-L3, L4 & L5)	30	30	0%	01-Apr-25	30-Apr-25	16-Apr-25	15-May-25	15	Renamed activity, Changed Dur to 30d				
12-1160-1(7C)	FS Lift Installation (PB-L1 & L2)	30	30	0%	10-Apr-25	09-May-25	11-Jul-26	09-Aug-26	457	New activity				
12-1580(6E)	Earthing and Lightning Protection System	180	114	21.11%	20-May-22 A	24-May-25	17-Nov-24	10-Mar-25	-75					
<b>Turbine Hall Bld BS Works</b>		<b>386</b>	<b>80</b>		<b>11-Oct-23 A</b>	<b>20-Apr-25</b>	<b>26-Oct-24</b>	<b>01-Jun-25</b>	<b>42</b>					
<b>Electrical Bld BS Works</b>		<b>150</b>	<b>32</b>		<b>11-Oct-23 A</b>	<b>04-Mar-25</b>	<b>06-Jan-25</b>	<b>01-Jun-25</b>	<b>90</b>					
12-1270	Plumbing & Drainage System	60	32	46%	11-Oct-23 A	04-Mar-25	06-Jan-25	08-Feb-25	-24					
12-1280	MVAC System	120	18	85%	25-Feb-24 A	17-Feb-25	06-Jan-25	24-Jan-25	-24					
12-1290	Fire Service System (Electrical Building)	120	24	80%	31-Mar-24 A	23-Feb-25	09-May-25	01-Jun-25	98					
12-1300	Electrical and Lighting System	120	25	79%	11-Oct-23 A	25-Feb-25	06-Jan-25	31-Jan-25	-24					
12-1310	Security, Surveillance & Communication System	90	7	92%	25-Feb-24 A	07-Feb-25	06-Jan-25	13-Jan-25	-24					
<b>Turbine Hall BS Works</b>		<b>353</b>	<b>80</b>		<b>11-Oct-23 A</b>	<b>20-Apr-25</b>	<b>26-Oct-24</b>	<b>13-Jan-25</b>	<b>-97</b>					
12-1320	Plumbing & Drainage System	90	28	68.89%	11-Oct-23 A	27-Feb-25	02-Nov-24	29-Nov-24	-90					
12-1330	MVAC System	60	12	80%	31-May-24 A	11-Feb-25	02-Nov-24	13-Nov-24	-90					
12-1340	Fire Service System (Turbine Hall)	90	36	60%	31-May-24 A	07-Mar-25	03-Dec-24	08-Jan-25	-59					
12-1350	Electrical and Lighting System	90	28	68.89%	11-Oct-23 A	27-Feb-25	03-Dec-24	30-Dec-24	-59					
12-1360	Security, Surveillance & Communication System	80	80	0%	31-Jan-25	20-Apr-25	26-Oct-24	13-Jan-25	-97	Update Original Duration from 90d to 80d				
<b>Compressor &amp; CCCW Bld BS Works</b>		<b>192</b>	<b>50</b>		<b>20-Mar-24 A</b>	<b>22-Mar-25</b>	<b>09-Jan-25</b>	<b>01-Jun-25</b>	<b>72</b>					
12-1370	Plumbing & Drainage System	60	3	95%	31-Mar-24 A	02-Feb-25	18-Jan-25	20-Jan-25	-13					
12-1380	MVAC System	120	6	95%	15-May-24 A	05-Feb-25	21-Apr-25	26-Apr-25	80					
12-1390	Fire Service System (CCCW Bld)	120	13	89%	27-Apr-24 A	13-Feb-25	19-May-25	01-Jun-25	109					
12-1400	Electrical and Lighting System	120	50	58%	20-Mar-24 A	22-Mar-25	09-Jan-25	28-Feb-25	-22					
12-1410	Security, Surveillance & Communication System	90	5	95%	20-Mar-24 A	04-Feb-25	09-Jan-25	13-Jan-25	-22					
<b>Chimney BS Works</b>		<b>97</b>	<b>97</b>		<b>23-Feb-25</b>	<b>30-May-25</b>	<b>15-Nov-24</b>	<b>31-Jul-26</b>	<b>427</b>					
12-1520	Plumbing & Drainage System	14	14	0%	02-Mar-25	15-Mar-25	20-Dec-24	02-Jan-25	-72					
12-1530	MVAC System	60	60	0%	02-Mar-25	30-Apr-25	26-Feb-25	26-Apr-25	-4					
12-1540	Fire Service System (Chimney)	60	60	0%	02-Mar-25	30-Apr-25	03-Apr-25	01-Jun-25	32					
12-1550	Electrical and Lighting System	60	60	0%	02-Mar-25	30-Apr-25	02-Jun-26	31-Jul-26	457					
12-1560	Security, Surveillance & Communication System	60	60	0%	23-Feb-25	23-Apr-25	15-Nov-24	13-Jan-25	-100					
12-1570	Lift Installation (Chimney)	60	60	0%	01-Apr-25	30-May-25	16-Apr-25	14-Jun-25	15					
<b>Mechanical Treatment Plant &amp; Water Treatment Plant Bld BS Works</b>		<b>337</b>	<b>153</b>		<b>30-Jun-24 A</b>	<b>03-Jul-25</b>	<b>26-Oct-24</b>	<b>31-Jul-26</b>	<b>394</b>					
<b>Mechanical Treatment BS Works</b>		<b>150</b>	<b>150</b>		<b>03-Feb-25</b>	<b>03-Jul-25</b>	<b>26-Oct-24</b>	<b>31-Jul-26</b>	<b>394</b>					
12-1420	Plumbing & Drainage System	65	65	0%	03-Feb-25	08-Apr-25	29-Oct-24	01-Jan-25	-97					
12-1430	MVAC & OCS System	59	59	0%	03-Feb-25	03-Apr-25	29-Oct-24	26-Dec-24	-97					
12-1440	Fire Service System	77	77	0%	24-Feb-25	12-May-25	24-Dec-24	10-Mar-25	-62					
12-1450	Electrical and Lighting System	120	120	0%	05-Mar-25	03-Jul-25	03-Apr-26	31-Jul-26	394					
12-1460	Security, Surveillance & Communication System	80	80	0%	03-Feb-25	24-Apr-25	26-Oct-24	13-Jan-25	-100	Update Original Duration from 90d to 80d				
12-1460-1(6C)	Lift Installation (LT-1 - 4)	30	30	0%	01-Apr-25	30-Apr-25	16-May-25	14-Jun-25	45	Renamed, Changed Dur to 30d				
<b>Water Treatment Plant BS Works</b>		<b>151</b>	<b>66</b>		<b>30-Jun-24 A</b>	<b>06-Apr-25</b>	<b>12-Nov-24</b>	<b>01-Jul-25</b>	<b>86</b>					
12-1580(7)	Plumbing & Drainage System	120	66	45%	30-Jun-24 A	06-Apr-25	12-Nov-24	17-Jan-25	-79					
12-1590(7)	MVAC & OCS System	120	44	63%	27-Jul-24 A	16-Mar-25	12-Nov-24	26-Dec-24	-79					
12-1600(7)	Fire Service System	107	52	51%	28-Jul-24 A	24-Mar-25	10-May-25	01-Jul-25	100					
12-1610(7)	Electrical and Lighting System	120	54	55%	15-Aug-24 A	25-Mar-25	19-Dec-24	11-Feb-25	-42					
12-1620(7)	Security, Surveillance & Communication System	90	25	72%	30-Jul-24 A	25-Feb-25	19-Dec-24	13-Jan-25	-42					
<b>IWMF Substation BS Works</b>		<b>120</b>	<b>8</b>		<b>10-Oct-23 A</b>	<b>08-Feb-25</b>	<b>12-Jan-25</b>	<b>02-May-25</b>	<b>84</b>					
12-1470	Plumbing & Drainage System	90	8	91%	10-Oct-23 A	08-Feb-25	12-Jan-25	20-Jan-25	-19					
12-1480	MVAC System	90	2	98%	11-Oct-23 A	05-Feb-25	25-Apr-25	26-Apr-25	80					
12-1490	Fire Service System (IWMF Substation)	90	2	98%	12-Oct-23 A	05-Feb-25	01-May-25	02-May-25	86					
12-1500	Electrical and Lighting System	90	2	98%	10-Oct-23 A	05-Feb-25	12-Jan-25	13-Jan-25	-23					
12-1510	Security, Surveillance & Communication System	90	2	98%	20-Nov-23 A	05-Feb-25	12-Jan-25	13-Jan-25	-23					
<b>Elevated Drive Way and Associated Structures Bld BS Works</b>		<b>127</b>	<b>126</b>		<b>15-Sep-24 A</b>	<b>05-Jun-25</b>	<b>15-Nov-24</b>	<b>31-Jul-26</b>	<b>421</b>					
<b>Elevated Drive Way RSA to RSG</b>		<b>113</b>	<b>112</b>		<b>15-Sep-24 A</b>	<b>22-May-25</b>	<b>22-Nov-24</b>	<b>31-Jul-26</b>	<b>435</b>					
12-1170	Plumbing & Drainage System	60	58	3%	15-Sep-24 A	30-Mar-25	23-Nov-24	20-Jan-25	-68					
12-1180	MVAC System	60	60	0%	23-Mar-25	22-May-25	26-Feb-25	26-Apr-25	-26					
12-1190	Fire Service System (Elevated Driveway)	60	58	3%	15-Sep-24 A	30-Mar-25	11-Jan-25	10-Mar-25	-19					
12-1200	Electrical and Lighting System	60	58	4%	23-Jan-25 A	22-Apr-25	04-Jun-26	31-Jul-26	465	Update Actual Start Date				
12-1210	CCTV & Surveillance System	60	53	12%	21-Jan-25 A	22-Apr-25	22-Nov-24	13-Jan-25	-99	Update Actual Start Date				
<b>Elevated Drive Way RSG to RSU</b>		<b>90</b>	<b>90</b>		<b>31-Jan-25</b>	<b>30-Apr-25</b>	<b>15-Nov-24</b>	<b>31-Jul-26</b>	<b>457</b>					
12-1580	Plumbing & Drainage System	60	60	0%	02-Mar-25	30-Apr-25	28-Feb-25	28-Apr-25	-2					
12-1590	MVAC System	60	60	0%	02-Mar-25	30-Apr-25	26-Feb-25	26-Apr-25	-4					
12-1600	Fire Service System (Elevated Driveway)	60	60	0%	02-Mar-25	30-Apr-25	02-Jun-25	31-Jul-25	92					
12-1610	Electrical and Lighting System	60	60	0%	02-Mar-25	30-Apr-25	02-Jun-26	31-Jul-26	457					
12-1620	CCTV & Surveillance System	60	60	0%	31-Jan-25	31-Mar-25	15-Nov-24	13-Jan-25	-77					
<b>Elevated Drive Way RSU to RSAF</b>		<b>60</b>	<b>60</b>		<b>07-Apr-25</b>	<b>05-Jun-25</b>	<b>14-Jan-25</b>	<b>31-Jul-26</b>	<b>421</b>					
12-1630	Plumbing & Drainage System	60	60	0%	07-Apr-25	05-Jun-25	28-Feb-25	28-Apr-25	-38					
12-1640	MVAC System	60	60	0%	07-Apr-25	05-Jun-25	26-Feb-25	26-Apr-25	-40					
12-1650	Fire Service System (Elevated Driveway)	60	60	0%	07-Apr-25	05-Jun-25	02-Jun-25	31-Jul-25	56					
12-1660	Electrical and Lighting System	60	60	0%	07-Apr-25	05-Jun-25	02-Jun-26	31-Jul-26	421					
12-1670	CCTV & Surveillance System	60	60	0%	07-Apr-25	05-Jun-25	14-Jan-25	14-Mar-25	-83					



Activity ID	Activity Name	Original Duration	Remaining Duration	Activity % Complete	Current Start	Current Finish	Late Start	Late Finish	Total Float	M86 Remarks	2025										
											Jan 86	Feb 87	Mar 88	Apr 89							
<b>ACC Equipment Structure BS Works</b>																					
12-1580(5a)	Plumbing & Drainage System	90	90	0%	22-Feb-25	22-May-25	15-Nov-24	25-Sep-26	491												
12-1590(5a)	MVAC System	60	60	0%	22-Feb-25	22-Apr-25	28-Feb-25	28-Apr-25	6												
12-1600(5a)	Fire Service System (Equipment/Appliance)	90	90	0%	22-Feb-25	22-May-25	27-Jan-25	26-Apr-25	-26												
12-1610(5a)	Electrical and Lighting System	60	60	0%	22-Feb-25	22-Apr-25	28-Jul-26	25-Sep-26	521												
12-1620(5a)	Security, Surveillance & Communication System	60	60	0%	22-Feb-25	22-Apr-25	10-Jan-25	10-Mar-25	-43												
<b>Vehicle Fuel Filling Station BS Works</b>																					
12-2020(6D)	Fire Service System (Vehicle Filling Station)	60	60	0%	02-Mar-25	30-Apr-25	15-Dec-24	12-Feb-25	-77												
12-2030(6D)	Electrical and Lighting System (Vehicle Filling Station)	60	60	0%	02-Mar-25	30-Apr-25	15-Dec-24	12-Feb-25	-77												
12-2040(6D)	Security, Surveillance & Communication System (Vehicle Filling Station)	30	30	0%	02-Mar-25	31-Mar-25	15-Dec-24	13-Jan-25	-77												
12-2050(6D)	Install Fuel Filling Kiosk	60	60	0%	02-Mar-25	30-Apr-25	25-Apr-25	23-Jun-25	54												
<b>Fire Boat Access BS System</b>																					
12-2130(6D)	Diesel Generator & Electrical System (Berth)	60	60	0%	18-Apr-25	16-Jun-25	28-Jul-26	25-Sep-26	466												
12-2140(6D)	Microwave Transmission System (Berth)	60	60	0%	18-Apr-25	16-Jun-25	28-Jul-26	25-Sep-26	466												
<b>Seawater Intake Chamber BS Works</b>																					
12-1630(7)	Plumbing & Drainage System	60	60	0%	17-Feb-25	17-Apr-25	15-Nov-24	13-Jan-25	-94												
12-1640(7)	MVAC System	60	60	0%	17-Feb-25	17-Apr-25	26-Feb-25	26-Apr-25	9												
12-1650(7)	Fire Service System (Equipment/Appliance)	60	60	0%	17-Feb-25	17-Apr-25	02-Jun-25	31-Jul-25	105												
12-1660(7)	Electrical and Lighting System	60	60	0%	17-Feb-25	17-Apr-25	15-Nov-24	13-Jan-25	-94												
12-1670(7)	Security, Surveillance & Communication System	60	60	0%	17-Feb-25	17-Apr-25	15-Nov-24	13-Jan-25	-94												
<b>Process Equipment Installation</b>																					
<b>Process Building - Waste Bunker &amp; Tipping Hall Bid Process Equipment Installation</b>																					
<b>Equipment, Piping and Instrument Installation and Connection Works</b>																					
<b>Process Building (Module 1)</b>																					
12-3010(6F)	Piping Installation Works	517	120	0%	01-Mar-23 A	02-Aug-25	02-Sep-24	25-Sep-26	420												
12-3020(6F)	Pipe Testing	517	120	0%	20-Sep-23 A	30-May-25	02-Sep-24	17-Jan-25	-133												
12-3030(6F)	Piping Insulation Works	244	60	0%	30-Jun-24 A	31-Mar-25	05-Sep-24	03-Nov-24	-148												
<b>Process Building (Module 2)</b>																					
12-3040(6F)	Embedded Piping Installation	80	29	50%	30-Jun-24 A	28-Feb-25	12-Sep-24	10-Oct-24	-141												
12-3050(6F)	Piping Installation Works	60	60	0%	31-Jan-25	31-Mar-25	05-Sep-24	03-Nov-24	-148												
12-3060(6F)	Pipe Testing	60	60	0%	31-Jan-25	31-Mar-25	05-Sep-24	03-Nov-24	-148												
12-3070(6F)	Piping Insulation Works	333	75	0%	02-Jan-24 A	15-Apr-25	02-Sep-24	17-Nov-24	-149												
12-3075(M71)	Equipment Installation at Basin Area at +6.5mPD (included Boiler Drainage Tanks)	60	6	90%	02-Jan-24 A	05-Feb-25	13-Sep-24	18-Sep-24	-140												
<b>Process Building (Module 3)</b>																					
12-3080(6F)	Embedded Piping Installation	60	60	0%	31-Jan-25	31-Mar-25	04-Sep-24	02-Nov-24	-149												
12-3090(6F)	Piping Installation Works	60	60	0%	15-Feb-25	15-Apr-25	19-Sep-24	17-Nov-24	-149												
12-3100(6F)	Pipe Testing	60	60	0%	15-Feb-25	15-Apr-25	19-Sep-24	17-Nov-24	-149												
12-3110(6F)	Piping Insulation Works	90	29	67.78%	15-Aug-24 A	28-Feb-25	02-Sep-24	30-Sep-24	-151												
<b>Process Building (WWTP)</b>																					
12-3160(6F)	Embedded Piping Installation	329	120	0%	05-Feb-24 A	30-May-25	20-Sep-24	17-Jan-25	-133												
<b>Ash Treatment Equipment (Module 1)</b>																					
12-4000(6G_R1)	Deliver and installation of Ash Treatment Equipments	60	31	48.42%	20-Sep-23 A	04-Mar-25	24-Oct-24	23-Nov-24	-101												
<b>Ash Treatment Equipment (Module 2)</b>																					
12-4010(6G_R1)	Deliver and installation of Ash Treatment Equipments	120	6	95%	10-Mar-24 A	05-Feb-25	29-Sep-24	04-Oct-24	-124												
<b>Ash Treatment Equipment (Module 3)</b>																					
12-4020(6G_R1)	Deliver and installation of Ash Treatment Equipments	120	12	90%	30-Jun-24 A	11-Feb-25	07-Oct-24	18-Oct-24	-116												
<b>Process Building (Cranes and Shredder)</b>																					
<b>Process Building (Module 1)</b>																					
13-1000(M81)	Waste Crane Nos. 1 & 2 Installation @+41.6mPD	120	12	90%	15-Jul-24 A	11-Feb-25	16-Nov-24	27-Nov-24	-76												
13-1000-1(6)	Ash Crane Nos. 1 & 2 Installation @+15.3mPD	120	12	90%	15-Jul-24 A	11-Feb-25	16-Nov-24	27-Nov-24	-76												
13-1000-2(6)	Shredder No.1 Installation	120	12	90%	15-Jul-24 A	11-Feb-25	16-Nov-24	27-Nov-24	-76												
13-1000-3(6)	Waste Crane Hoists Installation (Grid PB1-PB2 and PB11-PB12)	357	103	0%	15-Mar-24 A	13-May-25	06-Sep-24	10-Apr-25	-33												
13-1000-5(6B)	Waste Crane Control Room 1 Equipment (+33.5)	315	68	0%	15-Mar-24 A	08-Apr-25	27-Sep-24	10-Apr-25	2												
13-1000-6(6B)	EOTC & Monorail Hoist System installation in Ash Crane Control Room (+15.8mPD & +19.9mPD)	40	39	80%	08-Dec-24 A	08-Apr-25	25-Dec-24	01-Feb-25	-66												
13-1000-7(6B)	EOTC & Monorail Hoist System installation in Mechanical Shredder Area +28.5mPD	70	66	50%	20-Dec-24 A	06-Apr-25	27-Sep-24	01-Dec-24	-126												
13-1000-8(6B)	Monorail Hoist System installation in CCR Electrical Switch room +13.75mPD	39	26	28.57%	06-Jan-25 A	25-Feb-25	09-Oct-24	03-Nov-24	-114	Update Actual Start Date											
13-1000-9(6B)	Monorail Hoist System installation in CCR Electrical Switch room +23mPD	30	6	80%	02-Dec-24 A	06-Mar-25	26-Jan-25	31-Jan-25	-34	Update Actual Start Date											
13-1010(6B)	EOTC Hoist System installation in Main Workshop & Store +15.3mPD	70	42	40%	31-Oct-24 A	13-Mar-25	22-Dec-24	01-Feb-25	-40												
13-1020(M81)	Ash Crane Control Room 1 Equipment	50	50	0%	11-Feb-25	01-Apr-25	07-Nov-24	26-Dec-24	-96	Update Original Duration from 70d to 50d											
<b>Process Building (Module 2)</b>																					
13-1004(M81)	Waste Crane Nos. 3 Installation	60	60	0%	31-Jan-25*	31-Mar-25	10-Feb-25	10-Apr-25	10												
13-1004-1(M71)	Ash Crane No. 3 Installation @+15.3mPD	50	50	0%	31-Jan-25*	31-Mar-25	10-Feb-25	10-Apr-25	10												
13-1004-2(M71)	Shredder No.2 Installation	70	70	0%	17-Feb-25	27-Apr-25	23-Oct-24	31-Dec-24	-117												
13-1004-3(M71)	Waste Crane Hoist Installation (Grid PB21-PB22)	70	70	0%	31-Jan-25*	10-Apr-25	24-Nov-24	01-Feb-25	-68												
13-1004-4(M71)	EOTC & Monorail Hoist System installation in Ash Crane Control Room (+15.8mPD & +19.9mPD)	70	70	0%	31-Jan-25*	10-Apr-25	24-Nov-24	01-Feb-25	-68												
13-1004-5(M71)	EOTC & Monorail Hoist System installation in Mechanical Shredder Area +28.5mPD	70	70	0%	31-Jan-25*	10-Apr-25	24-Nov-24	01-Feb-25	-68												
13-1008-5(M81)	Waste Crane Control Room 2 Equipment	70	70	0%	05-Mar-25	13-May-25	29-Nov-24	06-Feb-25	-96												
13-1008-8(M81)	Ash Control Room 2 Equipment	30	30	0%	05-Mar-25	03-Apr-25	02-Dec-24	31-Dec-24	-93												
<b>Process Building (Module 3)</b>																					
13-1008-0(M81)	Waste Crane Nos. 4 Installation	124	96	0%	10-Dec-24 A	06-May-25	27-Sep-24	06-Feb-25	-89												
13-1008-1(M71)	Ash Crane No. 4 Installation @+15.3mPD	30	18	80%	13-Dec-24 A	17-Apr-25	14-Jan-25	31-Jan-25	-76	Update Actual Start Date											
13-1008-3(M71)	Waste Crane Hoist Installation (Grid PB31-PB32)	70	96	20%	21-Dec-24 A	06-May-25	27-Sep-24	31-Dec-24	-126												
13-1008-3(M71)	Waste Crane Hoist Installation (Grid PB31-PB32)	30	6	80%	10-Dec-24 A	23-Apr-25	01-Feb-25	06-Feb-25	-76	Update Actual Start Date											

Activity ID	Activity Name	Original Duration	Remaining Duration	Activity % Complete	Current Start	Current Finish	Late Start	Late Finish	Total Float	M86 Remarks	2025			
											Jan 86	Feb 87	Mar 88	Apr 89
<b>Process Building (WWTP Equipment Installation)</b>														
<b>Stage 1 (WWTP Pre-Treatment)</b>														
13-1009-1(M82)	Mechanical Equipment and Piping Installation	30	15	50%	07-Jul-24 A	14-Feb-25	11-Nov-24	26-Nov-24	-81					
13-1009-2(M82)	Electrical and Instrumentation Installation	43	43	0%	11-Feb-25	25-Mar-25	22-Nov-24	03-Jan-25	-81					
<b>Stage 2 (WWTP Remaining)</b>														
13-1010-1(6)	WWTP Piping and instrument installation	120	60	50.04%	01-Mar-23 A	02-Apr-25	24-Oct-24	22-Dec-24	-101					
13-1010-10(6E)	Provision of Temporary Power Supply for WWTP Testing & Commissioning	56	56	0%	06-Feb-25	02-Apr-25	28-Oct-24	22-Dec-24	-101					
13-1010-11(M63)	Cooling Tower installation @+17.5 mPd	48	48	0%	07-Feb-25	27-Mar-25	05-Dec-24	21-Jan-25	-64					
13-1010-12(M63)	Equipments for Bio-Tank Area @+3.3mPd	120	54	55.04%	07-Jul-24 A	28-Mar-25	30-Oct-24	22-Dec-24	-95					
13-1010-13(M63)	Equipments for Centrate Area, Inlet Sump & EQ Tank Area @+2.0mPd	60	42	30%	02-Jan-25 A	16-Mar-25	11-Nov-24	22-Dec-24	-83	Update Actual Start Date				
13-1010-2(6)	WWTP Electrical Equipment installation & Cable pulling and termination	60	60	0%	22-Feb-25	22-Apr-25	24-Oct-24	22-Dec-24	-121					
13-1010-5(6B)	EOTC Hoist System installation in WWTP +6.5	60	28	53.42%	15-Aug-24 A	01-Mar-25	05-Nov-24	02-Dec-24	-89					
13-1010-6(6B)	Monorail Hoist System installation in WWTP +10mPd & +13.3mPd	60	42	30%	14-Jan-25 A	16-Mar-25	22-Oct-24	02-Dec-24	-103	Update Actual Start Date				
13-1010-7(6B)	LVSG 6A/6B @ WWTP Switch room +13.3mPd	60	60	0%	02-Feb-25	02-Apr-25	04-Oct-24	02-Dec-24	-121					
13-1010-8(6B)	UPS DB @ WWTP Switch room @13.3mPd	60	60	0%	02-Feb-25	02-Apr-25	04-Oct-24	02-Dec-24	-121					
13-1020(6F)	Equipment Installation for Equipment Rm, Sludge Dewatering Rm & Chemical Rm Area @+6.5mPd	90	18	80%	21-Aug-24 A	20-Feb-25	05-Dec-24	22-Dec-24	-59					
13-1030(6F)	Equipment Installation for MBR Tank, DAF & Chemical Tank Area @+10.0mPd	60	27	55%	02-Dec-24 A	01-Mar-25	06-Nov-24	02-Dec-24	-88					
13-1040(6F)	Equipment for Pretreatment, Chemical Tank, RO, MBR, AQP, MCC & Control Area @+12.5mPd	60	33	45%	20-Aug-24 A	07-Mar-25	21-Oct-24	22-Nov-24	-104					
<b>Process Building (Central Control System Installation)</b>														
13-1010-3(6B)	Workstations and Control System Installation (Control Room 2 +36.5mPd)	58	25	5%	01-Dec-24 A	24-Feb-25	27-Oct-24	20-Nov-24	-96					
13-1980	Control Systems Installation at CCR	30	30	0%	31-Jan-25	01-Mar-25	22-Oct-24	20-Nov-24	-101	Update Original Duration from 44d to 30d				
13-1990	Cable laying and Termination	30	30	0%	31-Jan-25	01-Mar-25	22-Oct-24	20-Nov-24	-101	Update Original Duration from 44d to 30d				
13-2160(6B)	DCS Installation	30	30	0%	31-Jan-25	01-Mar-25	22-Oct-24	20-Nov-24	-101	Update Original Duration from 44d to 30d				
13-2210(6B)	CMMS Installation	30	30	0%	31-Jan-25	01-Mar-25	22-Oct-24	20-Nov-24	-101	Update Original Duration from 44d to 30d				
13-2260(6B)	IDMS Installation	30	30	0%	31-Jan-25	01-Mar-25	22-Oct-24	20-Nov-24	-101	Update Original Duration from 44d to 30d				
13-2270(6B)	OMS Installation	30	30	0%	31-Jan-25	01-Mar-25	22-Oct-24	20-Nov-24	-101	Update Original Duration from 44d to 30d				
13-2280(6D)	Monorail Hoist System installation in CCR Electrical Switch room +13.75mPd	30	30	0%	31-Jan-25	01-Mar-25	12-Mar-25	10-Apr-25	40	Update Original Duration from 44d to 30d				
<b>Process Building (Switch Room)</b>														
13-1000-4(6B)	Waste Crane Switch room E&I Equipment Installation @+29.5mPd, inclusive of Control Chair and Junction box in WCCR	60	36	40%	15-Nov-24 A	07-Mar-25	07-Oct-24	11-Nov-24	-116					
13-1010-4(6B)	Workstations and Control System Installation (Switch Room +28.25mPd)	45	27	40%	04-Dec-24 A	26-Feb-25	01-Oct-24	27-Oct-24	-122					
13-2280(6B)	Transformer @ Process Bldg. switch room x4 Nos. @+13.3 mPd	90	5	95%	07-Sep-24 A	04-Feb-25	23-Oct-24	27-Oct-24	-100					
13-2280-1(6B)	LVSG 1A/1B and 2A/2B (below Toilet/Server Room - Process building Switch room)	60	21	65%	21-Oct-24 A	20-Feb-25	22-Sep-24	12-Oct-24	-131					
13-2280-2(6B)	UPS @ Process Building Switch room and Battery room	90	30	50%	20-Aug-24 A	01-Mar-25	13-Sep-24	12-Oct-24	-140					
<b>Process Building - Boiler House &amp; Flue Gas Treatment Bld Process Equipment Installation</b>														
<b>Process Building (Installation TPU Module)</b>														
<b>TPU Train 1</b>														
13-1070	Pipe Insulation Works	46	46	0%	31-Jan-25	17-Mar-25	19-Sep-24	03-Nov-24	-134					
13-1080	Electrical instrument and Cabling Works	60	46	25%	01-Dec-24 A	17-Mar-25	19-Sep-24	03-Nov-24	-134					
13-1100	Boiler Refractory works	60	60	0%	21-Feb-25*	21-Apr-25	20-Sep-24	18-Nov-24	-154	Change Relationship to Successor 16-1660 from FS0 to FS-30				
<b>TPU Train 2</b>														
13-1160	Pipe Insulation Works	46	46	0%	31-Jan-25	17-Mar-25	19-Sep-24	03-Nov-24	-134					
13-1170	Electrical instrument and Cabling Works	46	37	20%	31-Dec-24 A	08-Mar-25	28-Sep-24	03-Nov-24	-125	Update Actual Start Date				
13-1190	Boiler Refractory works	60	60	0%	21-Feb-25*	21-Apr-25	20-Sep-24	18-Nov-24	-154	Change Relationship to Successor 16-1660 from FS0 to FS-30				
<b>TPU Train 3</b>														
13-1250	Pipe Insulation Works	46	46	0%	31-Jan-25	17-Mar-25	10-Nov-24	25-Dec-24	-82					
13-1260	Electrical instrument and Cabling Works	46	46	0%	31-Jan-25	17-Mar-25	12-Sep-24	27-Oct-24	-141					
13-1280	Boiler Refractory works	60	60	0%	07-Apr-25	05-Jun-25	04-Nov-24	02-Jan-25	-154	Update Original Duration from 75d to 60d; Change Relationship to Successor 16-1720 from FS0 to FS-30; Changed predecessor				
<b>TPU Train 4</b>														
13-1310	Boiler Condition Check and Repair	7	7	0%	03-Mar-25	09-Mar-25	19-Dec-24	25-Dec-24	-74	Update Original Duration from 22d to 7d				
13-1340	Pipe Insulation Works	46	46	0%	31-Jan-25	17-Mar-25	10-Nov-24	25-Dec-24	-82					
13-1350	Electrical instrument and Cabling Works	46	46	0%	31-Jan-25	17-Mar-25	12-Sep-24	27-Oct-24	-141					
13-1360	Boiler Pressure Test	15	15	0%	24-Feb-25	10-Mar-25	26-Sep-24	10-Oct-24	-151	Change Relationship from Predecessor 13-1270 from FS0 to FS48				
13-1370	Boiler Refractory works	60	60	0%	07-Apr-25	05-Jun-25	04-Nov-24	02-Jan-25	-154	Update Original Duration from 75d to 60d; Change Relationship to Successor 16-1720 from FS0 to FS-30; Changed predecessor				
<b>TPU Train 5</b>														
13-1490	Boiler Condition Check and Repair	9	9	0%	18-Mar-25	26-Mar-25	09-Jan-25	17-Jan-25	-68	Update Original Duration from 38d to 9d				
13-1520	Pipe Insulation Works	46	46	0%	31-Jan-25	17-Mar-25	03-Dec-24	17-Jan-25	-59					
13-1530	Electrical instrument and Cabling Works	46	46	0%	31-Jan-25	17-Mar-25	20-Sep-24	04-Nov-24	-133					
13-1540	Boiler Pressure Test	15	15	0%	11-Mar-25	25-Mar-25	11-Oct-24	25-Oct-24	-151	Change Relationship from Predecessor 13-1360 from FS0 to FS16				
<b>TPU Train 6</b>														
13-1400	Boiler Condition Check and Repair	8	8	0%	02-Apr-25	09-Apr-25	10-Jan-25	17-Jan-25	-82	Update Original Duration from 53d to 8d				
13-1430	Pipe Insulation Works	46	46	0%	31-Jan-25	17-Mar-25	03-Dec-24	17-Jan-25	-59					
13-1440	Electrical instrument and Cabling Works	46	46	0%	31-Jan-25	17-Mar-25	20-Sep-24	04-Nov-24	-133					
13-1450	Boiler Pressure Test	15	15	0%	26-Mar-25	09-Apr-25	26-Oct-24	09-Nov-24	-151	Change Relationship from Predecessor 13-1450 from FS0 to FS15				
<b>Process Building (Installation of Flue Gas Module)</b>														
<b>FGC Train 1</b>														
13-1580	FGC Unit Condition Check and Repair	70	70	0%	31-Jan-25	10-Apr-25	19-Sep-24	30-Dec-24	-101					

Activity ID	Activity Name	Original Duration	Remaining Duration	Activity % Complete	Current Start	Current Finish	Late Start	Late Finish	Total Float	M86 Remarks	2025				
											Jan 86	Feb 87	Mar 88	Apr 89	
13-1610	Pipe Insulation Works	46	46	0%	31-Jan-25	17-Mar-25	19-Sep-24	03-Nov-24	-134						
13-1620	Electrical instrument and Cabling Works	46	35	25%	31-Dec-24 A	06-Mar-25	30-Sep-24	03-Nov-24	-123	Update Actual Start Date					
<b>FGC Train 2</b>		<b>70</b>	<b>70</b>		<b>31-Dec-24 A</b>	<b>10-Apr-25</b>	<b>19-Sep-24</b>	<b>30-Dec-24</b>	<b>-101</b>						
13-1650	FGC Unit Condition Check and Repair	70	70	0%	31-Jan-25	10-Apr-25	22-Oct-24	30-Dec-24	-101						FGC Unit Condition Check and R
13-1680	Pipe Insulation Works	46	46	0%	31-Jan-25	17-Mar-25	19-Sep-24	03-Nov-24	-134						Pipe Insulation Works
13-1690	Electrical instrument and Cabling Works	46	37	20%	31-Dec-24 A	08-Mar-25	28-Sep-24	03-Nov-24	-125	Update Actual Start Date					Electrical instrument and Cabling Works
<b>FGC Train 3</b>		<b>70</b>	<b>70</b>		<b>31-Jan-25</b>	<b>10-Apr-25</b>	<b>03-Sep-24</b>	<b>25-Dec-24</b>	<b>-106</b>						
13-1720	FGC Unit Condition Check and Repair	70	70	0%	31-Jan-25	10-Apr-25	17-Oct-24	25-Dec-24	-106						FGC Unit Condition Check and R
13-1750	Pipe Insulation Works	46	46	0%	31-Jan-25	17-Mar-25	03-Sep-24	18-Oct-24	-150						Pipe Insulation Works
13-1760	Electrical instrument and Cabling Works	46	46	0%	31-Jan-25	17-Mar-25	03-Sep-24	18-Oct-24	-150						Electrical instrument and Cabling Works
<b>FGC Train 4</b>		<b>101</b>	<b>101</b>		<b>31-Jan-25</b>	<b>11-May-25</b>	<b>03-Sep-24</b>	<b>25-Dec-24</b>	<b>-137</b>						
13-1790	FGC Unit Condition Check and Repair	70	70	0%	03-Mar-25	11-May-25	17-Oct-24	25-Dec-24	-137						
13-1795(6A)	Installation 4 nos. of Transformers for Process Module 2	14	14	0%	31-Jan-25	13-Feb-25	05-Sep-24	18-Sep-24	-148						Installation 4 nos. of Transformers for Process Module 2
13-1820	Pipe Insulation Works	46	46	0%	31-Jan-25	17-Mar-25	03-Sep-24	18-Oct-24	-150						Pipe Insulation Works
13-1830	Electrical instrument and Cabling Works	46	46	0%	31-Jan-25	17-Mar-25	03-Sep-24	18-Oct-24	-150						Electrical instrument and Cabling Works
<b>FGC Train 5</b>		<b>116</b>	<b>116</b>		<b>31-Jan-25</b>	<b>26-May-25</b>	<b>13-Sep-24</b>	<b>17-Jan-25</b>	<b>-129</b>						
13-1860	FGC Unit Condition Check and Repair	70	70	0%	18-Mar-25	26-May-25	09-Nov-24	17-Jan-25	-129						
13-1890	Pipe Insulation Works	46	46	0%	31-Jan-25	17-Mar-25	13-Sep-24	28-Oct-24	-140						Pipe Insulation Works
13-1900	Electrical instrument and Cabling Works	46	46	0%	31-Jan-25	17-Mar-25	13-Sep-24	28-Oct-24	-140						Electrical instrument and Cabling Works
<b>FGC Train 6</b>		<b>131</b>	<b>131</b>		<b>31-Jan-25</b>	<b>10-Jun-25</b>	<b>13-Sep-24</b>	<b>17-Jan-25</b>	<b>-144</b>						
13-1930	FGC Unit Condition Check and Repair	70	70	0%	02-Apr-25	10-Jun-25	09-Nov-24	17-Jan-25	-144						
13-1935(6A)	Installation 4 nos. of Transformers for Process Module 3	14	14	0%	31-Jan-25	13-Feb-25	15-Oct-24	28-Oct-24	-108						Installation 4 nos. of Transformers for Process Module 3
13-1960	Pipe Insulation Works	46	46	0%	31-Jan-25	17-Mar-25	13-Sep-24	28-Oct-24	-140						Pipe Insulation Works
13-1970	Electrical instrument and Cabling Works	46	46	0%	31-Jan-25	17-Mar-25	13-Sep-24	28-Oct-24	-140						Electrical instrument and Cabling Works
<b>ACC Equipment Installation</b>		<b>384</b>	<b>139</b>		<b>15-May-24 A</b>	<b>18-Jun-25</b>	<b>17-Sep-24</b>	<b>23-Jan-25</b>	<b>-146</b>						
<b>ACC Equipment 1 Installation</b>		<b>311</b>	<b>66</b>		<b>15-May-24 A</b>	<b>06-Apr-25</b>	<b>17-Sep-24</b>	<b>26-Dec-24</b>	<b>-101</b>						
13-2000-1(M63)	Condensate Tank & Equipments Delivery and installation (Module 1)	80	16	80%	15-May-24 A	15-Feb-25	17-Sep-24	02-Oct-24	-136						Condensate Tank & Equipments Delivery and installation (Module 1)
13-2010	Piping and Instrument Installation and Connection Works	40	40	0%	06-Feb-25	17-Mar-25	28-Oct-24	06-Dec-24	-101	Update Original Duration from 50d to 40d					Piping and Instrument Installation and Connection Works
13-2010-1(6E)	Air Tight Test	14	14	0%	04-Mar-25	17-Mar-25	07-Dec-24	20-Dec-24	-87	Change Relationship from Predecessor 13-2010 from FSO to FFO					Air Tight Test
13-2020	Pipe Insulation Works	60	60	0%	06-Feb-25	06-Apr-25	28-Oct-24	26-Dec-24	-101	Update Original Duration from 80d to 60d					Pipe Insulation Works
13-2030	Cable Laying and Termination Works	60	60	0%	01-Feb-25	01-Apr-25	28-Oct-24	26-Dec-24	-96	Update Original Duration from 80d to 60d					Cable Laying and Termination Works
<b>ACC Equipment 2 Installation</b>		<b>186</b>	<b>94</b>		<b>26-Oct-24 A</b>	<b>04-May-25</b>	<b>17-Sep-24</b>	<b>31-Dec-24</b>	<b>-124</b>						
13-2040-1(M63)	Condensate Tank & Equipments Delivery and installation (Module 2)	90	49	15%	26-Oct-24 A	20-Mar-25	17-Sep-24	04-Nov-24	-136						Condensate Tank & Equipments Delivery and installation (Module 2)
13-2050	Piping and Instrument Installation and Connection Works	64	64	0%	31-Jan-25	04-Apr-25	17-Sep-24	19-Nov-24	-136						Piping and Instrument Installation and Conn
13-2050-1(6E)	Air Tight Test	14	14	0%	05-Apr-25	18-Apr-25	12-Dec-24	25-Dec-24	-114						Air Tight Test
13-2060	Pipe Insulation Works	80	80	0%	14-Feb-25	04-May-25	07-Oct-24	25-Dec-24	-130						Pipe Insulation Works
13-2070	Cable Laying and Termination Works	80	80	0%	14-Feb-25	04-May-25	13-Oct-24	31-Dec-24	-124						Cable Laying and Termination Works
<b>ACC Equipment 3 Installation</b>		<b>125</b>	<b>125</b>		<b>14-Feb-25</b>	<b>18-Jun-25</b>	<b>21-Sep-24</b>	<b>23-Jan-25</b>	<b>-146</b>						
13-2080-1(M63)	Condensate Tank & Equipments Delivery and installation (Module 3)	80	80	0%	14-Feb-25	04-May-25	21-Sep-24	09-Dec-24	-146	Revised duration to 80					
13-2090	Piping and Instrument Installation and Connection Works	80	80	0%	01-Mar-25	19-May-25	06-Oct-24	24-Dec-24	-146	Revised duration to 80					
13-2100	Pipe Insulation Works	90	90	0%	21-Mar-25	18-Jun-25	26-Oct-24	23-Jan-25	-146						Pipe Insulation Works
13-2110	Cable Laying and Termination Works	90	90	0%	21-Mar-25	18-Jun-25	26-Oct-24	23-Jan-25	-146						Cable Laying and Termination Works
<b>Turbine Hall Bld Equipment Installation</b>		<b>255</b>	<b>86</b>		<b>15-Aug-24 A</b>	<b>26-Apr-25</b>	<b>06-Sep-24</b>	<b>10-Apr-25</b>	<b>-16</b>						
<b>Turbine Hall Module 1 Installation</b>		<b>124</b>	<b>32</b>		<b>07-Oct-24 A</b>	<b>04-Mar-25</b>	<b>22-Oct-24</b>	<b>25-Nov-24</b>	<b>-98</b>						
13-2130	Equipment, Piping and Instrument Installation and Connection Works	52	5	90%	07-Oct-24 A	05-Feb-25	22-Oct-24	27-Oct-24	-100						Equipment, Piping and Instrument Installation and Connection Works
13-2130-1(6E)	STG & TBS Piping hydrostatic test	7	7	0%	05-Feb-25	12-Feb-25	28-Oct-24	03-Nov-24	-100						STG & TBS Piping hydrostatic test
13-2140	Turbine Hall Piping Insulation Works	32	32	0%	31-Jan-25	04-Mar-25	25-Oct-24	25-Nov-24	-98						Turbine Hall Piping Insulation Works
13-2150	Turbine Electrical installation and instrumentation Works	32	24	25%	13-Dec-24 A	04-Mar-25	02-Nov-24	25-Nov-24	-98						Turbine Electrical installation and instrumentation Works
<b>Turbine Hall Module 2 Installation</b>		<b>158</b>	<b>66</b>		<b>07-Oct-24 A</b>	<b>06-Apr-25</b>	<b>15-Sep-24</b>	<b>15-Dec-24</b>	<b>-112</b>						
13-2180	Equipment, Piping and Instrument Installation and Connection Works	60	39	35%	07-Oct-24 A	10-Mar-25	18-Sep-24	26-Oct-24	-135						Equipment, Piping and Instrument Installation and Connection Works
13-2180-1(6E)	STG & TBS Piping hydrostatic test	7	7	0%	11-Mar-25	17-Mar-25	14-Nov-24	20-Nov-24	-117						STG & TBS Piping hydrostatic test
13-2190	Turbine Hall Piping Insulation Works	60	60	0%	06-Feb-25	06-Apr-25	17-Oct-24	15-Dec-24	-112						Turbine Hall Piping Insulation Works
13-2200	Turbine Electrical installation and instrumentation Works	46	41	10%	02-Jan-25 A	13-Mar-25	15-Sep-24	26-Oct-24	-137	Update Actual Start Date					Turbine Electrical installation and instrumentation Works
<b>Turbine Hall Module 3 Installation</b>		<b>139</b>	<b>75</b>		<b>13-Nov-24 A</b>	<b>15-Apr-25</b>	<b>06-Sep-24</b>	<b>25-Dec-24</b>	<b>-111</b>						
13-2230	Equipment, Piping and Instrument Installation and Connection Works	60	45	25%	13-Nov-24 A	16-Mar-25	21-Sep-24	04-Nov-24	-132						Equipment, Piping and Instrument Installation and Connection Works
13-2230-1(6E)	STG & TBS Piping hydrostatic test	7	7	0%	17-Mar-25	23-Mar-25	29-Nov-24	05-Dec-24	-108						STG & TBS Piping hydrostatic test
13-2240	Turbine Hall Piping Insulation Works	60	60	0%	15-Feb-25	15-Apr-25	27-Oct-24	25-Dec-24	-111						Turbine Hall Piping Insu
13-2250	Turbine Electrical installation and instrumentation Works	77	60	21.88%	31-Dec-24 A	31-Mar-25	06-Sep-24	04-Nov-24	-147	Changed remaining duration to 60d					Turbine Electrical installation and instrumentation V
<b>Turbine Hall Electrical Room Equipment Installation</b>		<b>255</b>	<b>86</b>		<b>15-Aug-24 A</b>	<b>26-Apr-25</b>	<b>21-Sep-24</b>	<b>10-Apr-25</b>	<b>-16</b>						
13-2280-1(6A)	Transport and Position 4 nos. of Transformers @ 1F (ZH)	15	2	90%	14-Oct-24 A	01-Feb-25	25-Oct-24	26-Oct-24	-98						Transport and Position 4 nos. of Transformers @ 1F (ZH)
13-2300	Other Associated Equipment Installation	60	12	80%	14-Oct-24 A	11-Feb-25	14-Nov-24	25-Nov-24	-78						Other Associated Equipment Installation
13-2310	Cable Laying and Termination for Module 1	79	40	50%	15-Sep-24 A	11-Mar-25	17-Oct-24	25-Nov-24	-106						Cable Laying and Termination for Module 1
13-2730(7)	Cable Laying and Termination for Module 2	86	86	0%	31-Jan-25	26-Apr-25	21-Sep-24	15-Dec-24	-132						Cab
13-2740(7)	Cable Laying and Termination for Module 3	86	86	0%	31-Jan-25	26-Apr-25	01-Oct-24	25-Dec-24	-122						Cab
<b>Turbine Hall Electrical Room @+15.00mPD</b>		<b>229</b>	<b>60</b>		<b>15-Aug-24 A</b>	<b>31-Mar-25</b>	<b>21-Oct-24</b>	<b>10-Apr-25</b>	<b>10</b>						
13-2290-1(6B)	Switchgear & electrical equipment Installation 1F - I&C room (I/O, Server, Control Panel, Workstation)	120	24	80%	15-Aug-24 A	23-Feb-25	21-Oct-24	13-Nov-24	-102						Switchgear & electrical equipment Installation 1F - I&C room (I/O, Server, Control Panel, Workstation)
13-2290-2(6B)	Switchgear & electrical equipment Installation 1F - Generator Control Room (GPP,SP,DC batter Charger,Generator contr	120	24	80%	15-Aug-24 A	23-Feb-25	21-Oct-24	13-Nov-24	-102						Switchgear & electrical equipment Installation 1F - Generator Control Room (GPP,SP,DC batter Charger,Generator
13-2290-3(6B)	Switchgear & electrical equipment Installation 1F - Battery Room (AC UPS,DC Battery Charger)	120	24	80%	15-Aug-24 A	23-Feb-25	21-Oct-24	13-Nov-24	-102						Switchgear & electrical equipment Installation 1F - Battery Room (AC UPS,DC Battery Charger)
13-2290-4(6B)	Switchgear & electrical equipment Installation 1F - HV Switch room (GCB)	60	12	80%	07-Oct-24 A	11-Feb-25	02-Nov-24	13-Nov-24	-90						Switchgear & electrical equipment Installation 1F - HV Switch room (GCB)
13-2290-5(6B)	Monorail Hoist System installation in Turbine Hall (1st Floor @+15)	60	60	0%	31-Jan-25	31-Mar-25	10-Feb-25	10-Apr-25	10						Monorail Hoist System installation in Turbine Hall (
<b>Turbine Hall Electrical Room @+23.50mPD</b>		<b>183</b>	<b>60</b>		<b>30-Aug-24 A</b>	<b>31-Mar-25</b>	<b>09-Nov-24</b>	<b>10-Apr-25</b>	<b>10</b>						
13-2280-2(6A)	Installation 6 nos. of Transformers @ Turbine Hall Electrical Room 3F 23.5mPD	60	3	95%	30-Aug-24 A	02-Feb-25	11-Nov-24	13-Nov-24	-81						Installation 6 nos. of Transformers @ Turbine Hall Electrical Room 3F 23.5mPD

Activity ID	Activity Name	Original Duration	Remaining Duration	Activity % Complete	Current Start	Current Finish	Late Start	Late Finish	Total Float	M86 Remarks	2025				
											Jan 86	Feb 87	Mar 88	Apr 89	
13-2290	Switchgear & electrical equipment Installation 3F (MCC-7,8,9,14,15,16, VSD ,soft starter,UPS)	60	12	80%	07-Oct-24 A	11-Feb-25	09-Nov-24	20-Nov-24	-83						
13-2290-6(6B)	Monorail Hoist System installation in Turbine Hall (3rd Floor @+23.5)	60	60	0%	31-Jan-25	31-Mar-25	10-Feb-25	10-Apr-25	10						
<b>Compressor &amp; CCCW Bld Equipment Installation</b>															
<b>Air Compressor Equipment Installation</b>															
13-2710(M62)	Electrical Instrumentation and Insulation Installations	90	5	95%	01-Jun-24 A	04-Feb-25	29-Nov-24	03-Dec-24	-63						
13-2720(M62)	Cable Laying and Termination Works for Air Compressor	90	5	95%	01-Jun-24 A	04-Feb-25	29-Nov-24	03-Dec-24	-63						
<b>CCCW Bld Equipment Installation</b>															
13-2330	CCCW Equipment Installation	100	10	90%	01-May-24 A	09-Feb-25	27-Oct-24	05-Nov-24	-96						
13-2340	Piping Installation and connections	90	18	80%	01-Jun-24 A	17-Feb-25	23-Oct-24	09-Nov-24	-100						
13-2350	Electrical Instrumentation and Insulation Installations	45	29	10%	31-Dec-24 A	28-Feb-25	23-Oct-24	20-Nov-24	-100	Update Actual Start Date					
13-2360	Cable Laying and Termination Works	45	29	10%	31-Dec-24 A	28-Feb-25	23-Oct-24	20-Nov-24	-100	Update Actual Start Date					
<b>Mechanical Treatment Plant Bld Process Equipment Installation</b>															
13-2370	MT Plant Process Mechanical Equipment Installation	150	150	0%	05-Mar-25	02-Aug-25	13-Oct-24	11-Mar-25	-143	Update Original Duration from 158d to 150d: Removed predecessor 05-3960					
13-2380	MT Plant Process Electrical Installation	119	119	0%	02-Mar-25	28-Jun-25	13-Nov-24	11-Mar-25	-109						
<b>Water Treatment Bld Process Equipment Installation</b>															
<b>Stage 1 (WTP Potable to Demin)</b>															
13-2385-2(M82)	Electrical and instrumentation Installation	30	9	70%	20-Feb-24 A	08-Feb-25	03-Nov-24	11-Nov-24	-89						
<b>Stage 2 (WTP Remaining)</b>															
13-2410	Electrical and instrumentation Installation	62	6	90%	05-Nov-24 A	06-Feb-25	21-Dec-24	27-Dec-24	-40						
13-2410-2(6D)	Laboratory furniture installation @ WTP Bldg @+13.5mPD	120	120	0%	02-Apr-25	31-Jul-25	11-Jan-25	10-May-25	-81						
13-2410-4(6B)	EOTC & Monorail Hoist System installation in WTP +6.5mPD	90	33	63.33%	11-Aug-24 A	04-Mar-25	31-Dec-24	01-Feb-25	-31						
13-2410-5(6B)	Monorail Hoist System installation in WTP +13.5mPD	90	45	50%	31-Dec-24 A	16-Mar-25	03-Mar-25	16-Apr-25	31	Update Actual Start Date					
13-2410-6(6B)	MCC-12 @ WTP Switch Room	62	16	75%	05-Nov-24 A	15-Feb-25	06-Nov-24	21-Nov-24	-86						
13-2410-7(6B)	DB for MCC-12 @ WTP Switch Room	47	9	80%	11-Dec-24 A	09-Feb-25	12-Nov-24	21-Nov-24	-79						
13-2410-8(6B)	UPS DB @ WTP Switch room @+6.5mPd	47	9	80%	11-Dec-24 A	09-Feb-25	12-Nov-24	21-Nov-24	-79						
<b>IWMF Substation Bld Equipment Installation</b>															
13-2440	132kV GIS Switch Gear @+6.5mPD	110	8	92.73%	15-May-24 A	07-Feb-25	18-Oct-24	25-Oct-24	-105						
13-2450	GIS Insulation Switchboard installation	110	8	92.73%	15-May-24 A	07-Feb-25	18-Oct-24	25-Oct-24	-105						
13-2460	Main Switch Board Installation (11kV)	110	8	92.73%	15-May-24 A	07-Feb-25	18-Oct-24	25-Oct-24	-105						
13-2480	Cable Laying and Termination	90	20	77.78%	01-Aug-24 A	19-Feb-25	13-Oct-24	01-Nov-24	-110	Revised remaining duration to 30d					
13-2640(7)	Deliver and Position of EDGs (11kV)	30	3	90%	15-May-24 A	02-Feb-25	20-Oct-24	22-Oct-24	-103						
<b>Elevated Drive Way &amp; Storage Bld Equipment Installation</b>															
13-2500	Workshop Equipment	110	110	0%	31-Jan-25	20-May-25	14-Nov-24	03-Mar-25	-78						
13-2630(6A)	Installation 2nos. of Transformers (Ramp Area TX Room +6.5mPD)	30	15	50%	10-Jan-25 A	20-Mar-25	22-Dec-24	05-Jan-25	-74	Update Actual Start Date					
13-2630(7)	Electrical Cable laying and termination	60	60	0%	19-Feb-25	19-Apr-25	07-Dec-24	04-Feb-25	-74						
13-2630-2(6D)	EOTC Hoist System installation in Vehicle Workshop +6.5mPD	41	41	0%	31-Jan-25*	12-Mar-25	23-Dec-24	01-Feb-25	-39						
<b>Seawater Intake Chamber</b>															
13-2540-1(6B)	Monorail Hoist System installation in Sea Water Intake Pump Area	90	90	0%	12-Apr-25	10-Jul-25	28-Jun-26	25-Sep-26	442						
13-2540-2(7)	Seawater Intake Pumps and Associated equipment installation	30	29	5%	30-Jan-25 A	28-Feb-25	29-Dec-24	26-Jan-25	-33	Update Actual Start Date					
<b>Equipment Installation at External Area</b>															
13-2510	Installation of Container Cranes at Berth Area	45	45	0%	13-Mar-25	27-Apr-25	19-Dec-24	01-Feb-25	-84						
13-2520	Fuel Oil Reception and Distribution System Installation at Berth Area	30	27	10%	15-Jan-25 A	01-Mar-25	27-Oct-24	22-Nov-24	-99	Change Relationship from Predecessor 08-1120-2(M55) from FSO to FF0					
13-2525	Weighbridge Equipment Installation (Inside Kiosk)	21	21	0%	31-Mar-25	20-Apr-25	05-Jan-25	25-Jan-25	-85						
13-2530	Weighbridge System & Equipment Installation (External)	14	14	0%	21-Apr-25	04-May-25	12-Jan-25	25-Jan-25	-99						
13-2540	Traffic Control System Installation & Testing	90	90	0%	15-Feb-25	15-May-25	11-Dec-24	10-Mar-25	-66						
<b>External Process Pipe Works</b>															
<b>Process and Non-process Piping Works</b>															
<b>Piping from Module 1 to Turbine Bld</b>															
13-2560	Piping Pressure Test	60	60	0%	31-Jan-25	31-Mar-25	05-Sep-24	03-Nov-24	-148						
13-2570	Piping Insulation Works	60	60	0%	31-Jan-25	31-Mar-25	05-Sep-24	03-Nov-24	-148						
<b>Pipe Rack Piping from Module 2 &amp; 3 to Turbine Bld</b>															
13-2590	Piping Pressure Test	60	60	0%	31-Jan-25	31-Mar-25	22-Sep-24	20-Nov-24	-131						
13-2600	Piping Insulation Works	60	60	0%	02-Mar-25	30-Apr-25	22-Oct-24	20-Dec-24	-131	Removed successor 16-1720, Change successor 16-1580 to FF+7d					
<b>Pipe Bridge B Piping from Turbine Bld 1 to CCCW Bld</b>															
13-2680	Piping Pressure Test	60	60	0%	31-Jan-25	31-Mar-25	20-Oct-24	18-Dec-24	-103						
13-2690	Piping Insulation Works	60	60	0%	31-Jan-25	31-Mar-25	20-Oct-24	18-Dec-24	-103						
<b>Pipe Bridge B Piping from Turbine Bld 2&amp;3 to CCCW Bld</b>															
13-2710	Piping Pressure Test	60	60	0%	31-Jan-25	31-Mar-25	05-Sep-24	03-Nov-24	-148						
13-2720	Piping Insulation Works	60	60	0%	02-Mar-25	30-Apr-25	05-Oct-24	03-Dec-24	-148						
<b>Pipe Bridge C Piping from Turbine Bld to ACC 1</b>															
13-2640	Piping Installation Works	60	40	10%	20-Oct-24 A	17-Mar-25	09-Nov-24	18-Dec-24	-89						
13-2650	Piping Pressure Test	60	60	0%	01-Feb-25	01-Apr-25	04-Nov-24	02-Jan-25	-89						
13-2660	Piping Insulation Works	60	60	0%	01-Feb-25	01-Apr-25	04-Nov-24	02-Jan-25	-89						
<b>Pipe Bridge C Piping from Turbine Bld to ACC 2</b>															
13-2700(M64)	Piping Installation Works	60	60	0%	04-Feb-25	04-Apr-25	21-Sep-24	19-Nov-24	-136						
13-2710(M64)	Piping Pressure Test	60	60	0%	25-Feb-25	25-Apr-25	12-Oct-24	10-Dec-24	-136						
13-2720(M64)	Piping Insulation Works	60	60	0%	18-Mar-25	16-May-25	02-Nov-24	31-Dec-24	-136						
<b>Pipe Bridge C Piping from Turbine Bld to ACC 3</b>															
13-2730(M64)	Piping Installation Works	60	60	0%	21-Mar-25	19-May-25	28-Oct-24	26-Dec-24	-144						
13-2740(M64)	Piping Pressure Test	60	60	0%	11-Apr-25	09-Jun-25	18-Nov-24	16-Jan-25	-144						

Activity ID	Activity Name	Original Duration	Remaining Duration	Activity % Complete	Current Start	Current Finish	Late Start	Late Finish	Total Float	M86 Remarks	2025										
											Jan 86	Feb 87	Mar 88	Apr 89							
<b>Chimney Flue Gas Ducting Works</b>																					
13-2510(7)	Fabrication and Delivery of Chimney Flue Gas Duct	110	21	80.91%	25-Jun-24 A	21-Apr-25	22-Oct-24	19-Jan-25	-92												
13-2610	Line 1 & 2 Flue Gas Duct Erection Works and weld test	50	20	60%	19-Jan-25 A	02-Mar-25	05-Dec-24	24-Dec-24	-68	Update Actual Start Date											
13-2610-0(M81)	Line 3 & 4 Flue Gas Duct Erection Works and weld test	50	50	0%	05-Feb-25	26-Mar-25	27-Oct-24	15-Dec-24	-101												
13-2610-0(M81)10	Line 5 & 6 Flue Gas Duct Erection Works and weld test	50	50	0%	14-Feb-25	04-Apr-25	05-Nov-24	24-Dec-24	-101												
13-2610-1(6F)	Line 1, 2 & 3 South Side Pipe connection between pipe bridge and chimney	9	9	0%	18-Mar-25	26-Mar-25	25-Dec-24	02-Jan-25	-83												
13-2610-2(6F)	Line 4, 5 & 6 North Side Pipe connection between pipe bridge and chimney	9	9	0%	05-Apr-25	13-Apr-25	25-Dec-24	02-Jan-25	-101												
13-2620	Line 1 & 2 Flue Gas Duct Insulation Works	12	8	30%	22-Jan-25 A	21-Apr-25	11-Jan-25	19-Jan-25	-92	Update Actual Start Date: Remove Predecessor 13-2610-1(6F) FSO											
13-2630	CEMS Delivery and installation (3hrs.)	30	30	0%	15-Mar-25	13-Apr-25	04-Dec-24	02-Jan-25	-101												
13-2700 (6F)	Flue Gas Duct Instrumentation Works	30	30	0%	15-Mar-25	13-Apr-25	04-Dec-24	02-Jan-25	-101												
13-2710 (6F)	Equipment installation	30	30	0%	15-Mar-25	13-Apr-25	04-Dec-24	02-Jan-25	-101												
<b>Landscape, External Road and Drains Works</b>																					
<b>Site Wide/External BS System</b>																					
14-1000(M81)	BS Works for Weighbridge	38	38	0%	31-Mar-25	07-May-25	05-Jan-25	11-Feb-25	-85	Update Original Duration from 45d to 38d											
14-1100(6D)	Site Wide and External BS System	200	200	0%	01-Apr-25	17-Oct-25	27-Nov-24	14-Jun-25	-125												
14-3030(7)	Electrical Services Installation at Berth Area	90	90	0%	31-Jan-25	30-Apr-25	25-May-26	22-Aug-26	479												
<b>External Utilities Works</b>																					
<b>External Utilities C&amp;S Works</b>																					
14-1055(7)	Cable Duct and Drawpit	250	250	0%	31-Jan-25	07-Oct-25	26-Nov-24	03-Aug-25	-65												
14-4035(M80)	Utility Trench Construction Section FT1	20	8	60%	15-Dec-24 A	10-Feb-25	01-Nov-24	08-Nov-24	-93												
14-4060(7)	Utility Trench Construction Section UT7	62	40	35%	08-Oct-24 A	02-Apr-25	13-Jan-25	22-Feb-25	-39	Amended Activity Name											
14-4070(7)	Utility Trench Construction Section UT8	150	150	0%	13-Mar-25	09-Aug-25	02-Feb-25	01-Jul-25	-39	Amended Activity Name											
<b>External Power &amp; Signal Cable Laying in Utility Trench</b>																					
14-4100(7)	External Power & Signal Cable Laying - Substation to Electrical Building and ACC	30	30	0%	31-Jan-25	01-Mar-25	28-Sep-24	27-Oct-24	-125												
14-4110(7)	External Power & Signal Cable - Electrical Building to PB Module 1 & 2 and CCCW	30	30	0%	31-Jan-25	01-Mar-25	06-Sep-24	05-Oct-24	-147												
14-4120(7)	External Power & Signal Cable Laying - Electrical Building to PB Module 3	60	60	0%	31-Jan-25	31-Mar-25	06-Sep-24	04-Nov-24	-147												
14-4130(7)	External Power & Signal Cable Laying - Electrical Building to MT & WTP, Process Building Module 1	30	30	0%	31-Jan-25	01-Mar-25	28-Sep-24	27-Oct-24	-125	Update Original Duration from 40d to 30d											
14-4140(7)	External Power & Signal Cable Laying - Electrical Building to Elevated Driveway	60	60	0%	02-Mar-25	30-Apr-25	07-Dec-24	04-Feb-25	-85												
14-4150(7)	External Power & Signal Cable Laying - Electrical Building to Administration Building	60	60	0%	02-Mar-25	30-Apr-25	24-Jun-26	22-Aug-26	479												
14-4160(7)	External Power & Signal Cable Laying - Electrical Building to Reception Pavilion	60	60	0%	03-Apr-25	01-Jun-25	25-Apr-26	23-Jun-26	387												
<b>External Watermains Laying</b>																					
14-4180(7)	Watermain Laying - WTP to Process Building (Appx. 100m @6m/3d)	21	21	0%	03-Mar-25	24-Mar-25	31-Dec-24	20-Jan-25	-63												
14-4190(7)	Watermain Laying - WTP to ACC Area (Appx. 250m @6m/3d)	60	60	0%	03-Mar-25	02-May-25	22-Nov-24	20-Jan-25	-102	Update Original Duration from 70d to 60d											
14-4200(7)	Watermain Laying - WTP to Water Tanks adj to Elevated Driveway (Appx. 190m @6m/3d)	60	60	0%	03-Mar-25	02-May-25	22-Nov-24	20-Jan-25	-102	Update Original Duration from 70d to 60d											
14-4210(7)	Watermain Laying - ACC Area to CCCW (Appx. 70m @6m/3d)	35	35	0%	18-Feb-25	24-Mar-25	17-Dec-24	20-Jan-25	-63												
14-4220(7)	Watermain Laying - ACC to Substation and Turbine Hall (Appx. 90m @6m/3d)	45	45	0%	03-Mar-25	17-Apr-25	07-Dec-24	20-Jan-25	-87												
14-4230(7)	Watermain Laying - Substation to Reception Pavilion (Appx. 240m @6m/3d)	120	120	0%	18-Feb-25	17-Jun-25	30-Dec-24	28-Apr-25	-50												
14-4240(7)	Watermain Laying - FH Along UT9 (approx. 350m @6m/d)	60	60	0%	03-Mar-25	02-May-25	03-May-25	01-Jul-25	61												
<b>Drainage Works</b>																					
<b>Overtopping Drain System</b>																					
<b>East Culvert (3.5m x 2.5m x 118m)</b>																					
14-2020	Rectangular Section (69m @10m/5d)	40	40	0%	10-Feb-25	30-Apr-25	26-Apr-25	26-Sep-25	149												
14-2030	Trapezoidal Section (159m @10m/5d)	60	60	0%	02-Mar-25	30-Apr-25	26-Apr-25	24-Jun-25	55												
<b>West Culvert (2.5m x 2.5m x 102m)</b>																					
14-3010	Pipe Section (69m @5m/d)	32	32	0%	31-Jan-25	03-Mar-25	23-Dec-24	23-Jan-25	-39												
14-3020	Rectangular Section (184m @10m/5d)	100	100	0%	04-Mar-25	11-Jun-25	25-Feb-25	04-Jun-25	-7												
<b>U/G Storm Drainage System</b>																					
14-1000(6D)	External Drainage System Construction Works (Common trench construction Utility Trench)	220	198	10%	14-Nov-24 A	16-Aug-25	28-Oct-24	13-May-25	-95												
14-1010(M81)	Construction of Outfall-01	60	60	0%	23-Mar-25	21-May-25	16-May-25	14-Jul-25	54												
14-1020(M81)	Construction of Outfall-02	60	59	1%	30-Dec-24 A	31-Mar-25	16-May-25	14-Jul-25	106												
14-1030(M81)	Construction of Outfall-03	60	48	20%	01-Dec-24 A	19-Mar-25	27-Mar-25	13-May-25	55												
14-1040(M81)	Construction of Outfall-04	60	51	15%	25-Oct-24 A	22-Mar-25	26-Mar-25	15-May-25	54												
14-1050(7C)	Construction of Outfall-05	60	60	0%	28-Feb-25*	28-Apr-25	16-May-25	14-Jul-25	77	New Activity											
<b>U/G Wastewater Drainage System</b>																					
14-1000-1(M55)	Sewage Transfer System for WMF Vessels (Caisson 13)	60	60	0%	11-Apr-25	10-Jun-25	16-May-25	14-Jul-25	35												
14-1000-1(M55)10	External Sewage Drainage System Construction Works (Common trench construction Utility Trench)	133	130	2%	02-Jan-25 A	10-Jun-25	06-Mar-25	14-Jul-25	35	Update Actual Start Date											
<b>Brine Discharge Pipe</b>																					
14-1050(M81)	Brine Discharge Pipe Laying in utility trench (UT5 & UT6)	30	30	0%	03-Mar-25	01-Apr-25	15-Jun-25	14-Jul-25	104												
14-1060(M81)	U/G Brine Discharge Pipe Laying	30	30	0%	03-Mar-25	01-Apr-25	15-Jun-25	14-Jul-25	104												
14-1070(M81)	Brine Discharge Outfall Prefabrication	60	60	0%	03-Mar-25	01-May-25	16-Apr-25	14-Jun-25	44												
<b>Earthing System</b>																					
16-1900-2(6)	Installation of Ground Earthing Mesh	180	29	58.17%	28-Apr-22 A	28-Feb-25	21-Oct-24	18-Nov-24	-102												
<b>External Road Works</b>																					
14-1010-2(6D)	Road Works (including high mast lighting)	210	210	0%	12-Mar-25	08-Oct-25	27-Nov-24	24-Jun-25	-106												
<b>Works By CLP</b>																					
<b>Remaining Installation Works by CLP</b>																					
15-1007	Telecom / Digital / Security / Metering Equipment Installation	210	60	71.43%	20-Jul-24 A	31-Mar-25	09-Feb-25	09-Apr-25	9												
15-1010	132kV cable termination at IWMF 132 kV Switchgears and associated HVAC Circuits Test	60	60	0%	02-Feb-25	02-Apr-25	11-Feb-25	11-Apr-25	9	Change Relationship from Predecessor 15-1010 from FSO to FF2											
15-1010-1(6)	Overall testing and commissioning of 2 x CHS-IWMF circuits	41	41	0%	06-Mar-25	15-Apr-25	15-Mar-25	24-Apr-25	9	Remove Predecessors 16-1600 SSO and 16-1010 FSO											
<b>Metering &amp; Energization</b>																					

Activity ID	Activity Name	Original Duration	Remaining Duration	Activity % Complete	Current Start	Current Finish	Late Start	Late Finish	Total Float	M86 Remarks	2025										
											Jan 86	Feb 87	Mar 88	Apr 89							
<b>Energization of IWMF Substation</b>																					
15-1027(7)	Connection for incoming power supply	21	21	0%	29-Mar-25	18-Apr-25	18-Feb-25	10-Mar-25	-39												
<b>Energization of Submain</b>																					
15-1040-1(7)	Energization of Sub System - Process Building Module 1 Area (EDG Temporary Power)	4	4	0%	29-Mar-25	01-Apr-25	17-Dec-24	20-Dec-24	-102	Added predecessors 16-1940-3(7C) and 16-1950-3(7C)											
15-1040-2(7)	Energization of Sub System - Process Building Module 2 Area (EDG Temporary Power)	4	4	0%	29-Mar-25	01-Apr-25	22-Dec-24	25-Dec-24	-97	Added predecessors 16-1940-3(7C) and 16-1950-3(7C)											
15-1040-3(7)	Energization of Sub System - Process Building Module 3 Area (EDG Temporary Power)	4	4	0%	15-Apr-25	18-Apr-25	14-Jan-25	17-Jan-25	-91	Added predecessors 16-1940-3(7C) and 16-1950-3(7C)											
15-1040-6(7)	Energization of Sub System - Turbine Hall Area (EDG Temporary Power)	4	4	0%	13-Mar-25	16-Mar-25	07-Mar-25	10-Mar-25	-6	Added predecessors 16-1940-3(7C) and 16-1950-3(7C)											
15-1040-7(7)	Energization of Sub System - MT & WTP Area (EDG Temporary Power)	4	4	0%	13-Mar-25	16-Mar-25	05-Feb-25	08-Feb-25	-36	Added predecessors 16-1940-3(7C) and 16-1950-3(7C)											
15-1040-8(7)	Energization of Sub System - CCCW Building Area (EDG Temporary Power)	4	4	0%	13-Mar-25	16-Mar-25	07-Dec-24	10-Dec-24	-96	Added predecessors 16-1940-3(7C) and 16-1950-3(7C)											
<b>Testing &amp; Commissioning</b>																					
<b>SAT &amp; System Commissioning Tests</b>																					
<b>132kV Incoming Power Supply System T&amp;C</b>																					
16-1000	Systemwise Construction Completion Inspection	30	30	0%	20-Feb-25	21-Mar-25	12-Jan-25	17-Feb-25	-39												
16-1010	Conduct Site Acceptance Tests (SAT)	30	30	0%	27-Feb-25	28-Mar-25	19-Jan-25	17-Feb-25	-39	Change predecessor 16-1000 to FF+7d											
<b>11kV Electrical System T&amp;C</b>																					
<b>Process Building Module 1 11kV T&amp;C</b>																					
16-1850(1)	Systemwise Construction Completion Inspection	14	14	0%	02-Mar-25	15-Mar-25	13-Oct-24	26-Oct-24	-140												
16-1850(7)	Conduct Site Acceptance Tests (SAT)	15	15	0%	16-Mar-25	30-Mar-25	06-Dec-24	20-Dec-24	-100												
16-1860(7)	Conduct System Commissioning Tests	15	15	0%	31-Mar-25	14-Apr-25	21-Dec-24	04-Jan-25	-100												
<b>Process Building Module 2 11kV T&amp;C</b>																					
16-1880(1)	Systemwise Construction Completion Inspection	14	14	0%	03-Mar-25	17-Mar-25	13-Oct-24	26-Oct-24	-141												
16-1880(7)	Conduct Site Acceptance Tests (SAT)	30	30	0%	17-Mar-25	15-Apr-25	27-Oct-24	25-Nov-24	-141												
16-1890(7)	Conduct System Commissioning Tests	30	30	0%	16-Apr-25	15-May-25	26-Nov-24	25-Dec-24	-141												
<b>Process Building Module 3 11kV T&amp;C</b>																					
16-1910(1)	Systemwise Construction Completion Inspection	14	14	0%	01-Apr-25	14-Apr-25	05-Nov-24	18-Nov-24	-147												
16-1910(7)	Conduct Site Acceptance Tests (SAT)	30	30	0%	15-Apr-25	14-May-25	19-Nov-24	18-Dec-24	-147												
<b>Turbine Hall &amp; CCCW Building 11kV T&amp;C</b>																					
16-1940(1)	Systemwise Construction Completion Inspection and Testing	7	7	0%	24-Feb-25	02-Mar-25	14-Nov-24	20-Nov-24	-102												
16-1940(7)	Conduct Site Acceptance Tests (SAT)	15	15	0%	03-Mar-25	17-Mar-25	21-Nov-24	05-Dec-24	-102												
16-1950(7)	Conduct System Commissioning Tests	30	30	0%	18-Mar-25	16-Apr-25	06-Dec-24	04-Jan-25	-102												
<b>Mechanical Treatment and Water Treatment Plant 11kV T&amp;C</b>																					
16-2200(M61)	Systemwise Construction Completion Inspection	14	14	0%	15-Feb-25	28-Feb-25	07-Nov-24	20-Nov-24	-100												
16-2210(7)	Conduct Site Acceptance Tests (SAT)	15	15	0%	01-Mar-25	15-Mar-25	21-Nov-24	05-Dec-24	-100												
16-2220(7)	Conduct System Commissioning Tests	15	15	0%	16-Mar-25	30-Mar-25	06-Dec-24	20-Dec-24	-100												
<b>IWMF Substation 11kV T&amp;C</b>																					
<b>11kV System T&amp;C</b>																					
16-1940-1(7C)	Systemwise Construction Completion Inspection and Testing	7	7	0%	20-Feb-25	26-Feb-25	16-Nov-24	22-Nov-24	-96	New Activity											
16-1940-2(7C)	Conduct Site Acceptance Tests (SAT)	7	7	0%	27-Feb-25	05-Mar-25	23-Nov-24	29-Nov-24	-96	New Activity											
16-1940-3(7C)	Conduct System Commissioning Tests	7	7	0%	06-Mar-25	12-Mar-25	30-Nov-24	06-Dec-24	-96	New Activity											
<b>G/F 3 nr. EDG T&amp;C</b>																					
16-1950-1(7C)	Systemwise Construction Completion Inspection and Testing	7	7	0%	20-Feb-25	26-Feb-25	16-Nov-24	22-Nov-24	-96	New Activity											
16-1950-2(7C)	Conduct Site Acceptance Tests (SAT)	7	7	0%	27-Feb-25	05-Mar-25	23-Nov-24	29-Nov-24	-96	New Activity											
16-1950-3(7C)	Conduct System Commissioning Tests	7	7	0%	06-Mar-25	12-Mar-25	30-Nov-24	06-Dec-24	-96	New Activity											
<b>1/F 3 nr. EDG T&amp;C</b>																					
16-1960-1(7C)	Systemwise Construction Completion Inspection and Testing	7	7	0%	13-Mar-25	19-Mar-25	03-Jun-25	09-Jun-25	82	New Activity											
16-1960-2(7C)	Conduct Site Acceptance Tests (SAT)	7	7	0%	20-Mar-25	26-Mar-25	10-Jun-25	16-Jun-25	82	New Activity											
16-1960-3(7C)	Conduct System Commissioning Tests	7	7	0%	27-Mar-25	02-Apr-25	17-Jun-25	23-Jun-25	82	New Activity											
<b>MVAC &amp; OCS System T&amp;C</b>																					
<b>OCS System T&amp;C</b>																					
16-1150	Systemwise Construction Completion Inspection	14	14	0%	03-Apr-25	17-Apr-25	27-Dec-24	09-Jan-25	-97												
16-1160	Conduct Site Acceptance Tests	30	30	0%	17-Apr-25	17-May-25	10-Jan-25	08-Feb-25	-97												
<b>Security, Surveillance &amp; Communication System T&amp;C</b>																					
<b>Process related CCTV &amp; Communication System T&amp;C</b>																					
16-1180	Systemwise Construction Completion Inspection	14	14	0%	24-Apr-25	08-May-25	14-Jan-25	27-Jan-25	-100												
<b>Compressor &amp; CCCW Bld T&amp;C</b>																					
<b>Air Compressor</b>																					
16-1210	Systemwise Construction Completion Inspection	7	7	0%	04-Feb-25	11-Feb-25	04-Dec-24	10-Dec-24	-63	Changed duration to 7d											
16-1220(7)	Conduct Site Acceptance Tests	14	14	0%	17-Mar-25	30-Mar-25	11-Dec-24	24-Dec-24	-96	Added predecessor 15-1040-8(7), Changed duration to 14d											
16-1230(7)	Conduct System Commissioning Tests	7	7	0%	31-Mar-25	06-Apr-25	25-Dec-24	31-Dec-24	-96												
<b>Fuel Oil System T&amp;C</b>																					
16-1240	Systemwise Construction Completion Inspection	7	7	0%	23-Feb-25	01-Mar-25	16-Nov-24	22-Nov-24	-99												
16-1250(7)	Conduct Site Acceptance Tests	14	14	0%	02-Mar-25	15-Mar-25	23-Nov-24	06-Dec-24	-99												
16-1260(7)	Conduct System Commissioning Tests	14	14	0%	16-Mar-25	29-Mar-25	07-Dec-24	20-Dec-24	-99												
<b>CCCW System T&amp;C</b>																					
16-1270	Systemwise Construction Completion Inspection	14	14	0%	15-Feb-25	28-Feb-25	07-Nov-24	20-Nov-24	-100												
16-1280(7)	Conduct Site Acceptance Tests	30	30	0%	01-Mar-25	30-Mar-25	21-Nov-24	20-Dec-24	-100												
16-1290(7)	Conduct System Commissioning Tests	30	30	0%	31-Mar-25	29-Apr-25	21-Dec-24	19-Jan-25	-100												

Activity ID	Activity Name	Original Duration	Remaining Duration	Activity % Complete	Current Start	Current Finish	Late Start	Late Finish	Total Float	M86 Remarks	2025			
											Jan 86	Feb 87	Mar 88	Apr 89
<b>ACC Equipment T&amp;C</b>														
		44	44		07-Apr-25	20-May-25	27-Dec-24	08-Feb-25	-101					
<b>ACC Equipment 1 T&amp;C</b>														
16-2000(M62)	Systemwise Construction Completion Inspection	14	14	0%	07-Apr-25	20-Apr-25	27-Dec-24	09-Jan-25	-101					
16-2010(7)	Conduct Site Acceptance Tests	30	30	0%	21-Apr-25	20-May-25	10-Jan-25	08-Feb-25	-101					
<b>Turbine Hall Process T&amp;C</b>														
		81	81		11-Mar-25	30-May-25	26-Nov-24	13-Feb-25	-106					
<b>Turbine Hall Module 1</b>														
16-1300(7)	Turbine Module 1 Systemwise Construction Completion Inspection	20	20	0%	11-Mar-25	31-Mar-25	26-Nov-24	15-Dec-24	-106					
16-1310(7)	Turbine Module 1 Conduct Site Acceptance Tests	60	60	0%	01-Apr-25	30-May-25	16-Dec-24	13-Feb-25	-106					
<b>Turbine Hall Module 2</b>														
16-1330(7)	Turbine Module 2 Systemwise Construction Completion Inspection	30	30	0%	27-Apr-25	26-May-25	16-Dec-24	14-Jan-25	-132					
<b>Turbine Hall Module 3</b>														
16-1360(7)	Turbine Module 3 Systemwise Construction Completion Inspection	30	30	0%	27-Apr-25	26-May-25	26-Dec-24	24-Jan-25	-122					
<b>Desalination &amp; Demineralization Process T&amp;C</b>														
		109	109		02-Feb-25	21-May-25	05-Nov-24	08-Feb-25	-102					
<b>Stage 1 (WTP Potable to Demin)</b>														
16-1295-1(M82)	Systemwise Construction Completion Inspection	13	13	0%	02-Feb-25	14-Feb-25	05-Nov-24	17-Nov-24	-89					
16-1295-2(M82)	Conduct Site Acceptance Tests	13	13	0%	05-Feb-25	17-Feb-25	08-Nov-24	20-Nov-24	-89					
16-1295-3(M82)	Conduct System Commissioning Tests	30	30	0%	18-Feb-25	19-Mar-25	21-Nov-24	20-Dec-24	-89					
16-2000(6D)	Provision of fresh water for testing	0	0	0%	20-Mar-25		21-Dec-24		-89					
<b>Stage 2 (WTP Remaining)</b>														
16-1300	Systemwise Construction Completion Inspection	13	13	0%	09-Apr-25	21-Apr-25	28-Dec-24	09-Jan-25	-102					
16-1310	Conduct Site Acceptance Tests	30	30	0%	22-Apr-25	21-May-25	10-Jan-25	08-Feb-25	-102					
<b>WWTP Process T&amp;C</b>														
		61	61		23-Mar-25	22-May-25	23-Dec-24	13-Feb-25	-98					
<b>Stage 1 (WWTP Pre-Treatment)</b>														
16-1625-1(M82)	Systemwise Construction Completion Inspection	7	7	0%	23-Mar-25	30-Mar-25	02-Jan-25	08-Jan-25	-81					
16-1625-2(M82)	Conduct Site Acceptance Tests (SAT)	13	13	0%	23-Mar-25	05-Apr-25	02-Jan-25	14-Jan-25	-81					
16-1625-3(M82)	Conduct System Commissioning Tests (with temporary power)	30	30	0%	05-Apr-25	05-May-25	15-Jan-25	13-Feb-25	-81					
<b>Stage 2 (WWTP Remaining)</b>														
16-1330	Systemwise Construction Completion Inspection	7	7	0%	23-Apr-25	29-Apr-25	23-Dec-24	29-Dec-24	-121					
16-1340	Conduct Site Acceptance Tests (SAT)	30	30	0%	23-Apr-25	22-May-25	23-Dec-24	21-Jan-25	-121					
<b>Ash Treatment Equipments T&amp;C</b>														
		36	36		06-Feb-25	13-Mar-25	05-Oct-24	27-Dec-24	-76					
16-1970(M62)	Systemwise Construction Completion Inspection - Module 1	30	30	0%	06-Feb-25	07-Mar-25	05-Oct-24	03-Nov-24	-124					
16-1970-1(M68)	Systemwise Construction Completion Inspection - Module 2	30	30	0%	12-Feb-25	13-Mar-25	19-Oct-24	17-Nov-24	-116					
16-1970-2(M68)	Systemwise Construction Completion Inspection - Module 3	30	30	0%	12-Feb-25	13-Mar-25	28-Nov-24	27-Dec-24	-76					
<b>Crane System T&amp;C</b>														
		44	44		07-Apr-25	20-May-25	27-Dec-24	23-Feb-25	-86					
<b>Waste Crane System T&amp;C</b>														
16-1390	Systemwise Construction Completion Inspection	7	7	0%	11-Apr-25	17-Apr-25	02-Feb-25	08-Feb-25	-68					
16-1400	Conduct Site Acceptance Tests	15	15	0%	18-Apr-25	02-May-25	09-Feb-25	23-Feb-25	-68					
<b>Ash Crane System T&amp;C</b>														
16-1970	Systemwise Construction Completion Inspection	14	14	0%	07-Apr-25	20-Apr-25	27-Dec-24	09-Jan-25	-101					
16-1980	Conduct Site Acceptance Tests	30	30	0%	21-Apr-25	20-May-25	10-Jan-25	08-Feb-25	-101					
<b>On-shore Crane System T&amp;C</b>														
16-2030(M58)	Systemwise Construction Completion Inspection	7	7	0%	27-Apr-25	04-May-25	02-Feb-25	08-Feb-25	-84					
<b>Control SCADA Systems T&amp;C</b>														
		74	74		16-Feb-25	30-Apr-25	07-Nov-24	19-Jan-25	-101					
16-1780	Systemwise Construction Completion Inspection	14	14	0%	16-Feb-25	01-Mar-25	07-Nov-24	20-Nov-24	-101					
16-1790	Conduct Site Acceptance Tests	30	30	0%	02-Mar-25	31-Mar-25	21-Nov-24	20-Dec-24	-101					
16-1800	Conduct System Commissioning Tests	30	30	0%	01-Apr-25	30-Apr-25	21-Dec-24	19-Jan-25	-101					
<b>CEMS Systems T&amp;C</b>														
16-1970(6G)	Systemwise Construction Completion Inspection	3	3	0%	14-Apr-25	16-Apr-25	03-Jan-25	05-Jan-25	-101					
16-1980(6G)	Conduct Site Acceptance Tests	7	7	0%	17-Apr-25	23-Apr-25	06-Jan-25	12-Jan-25	-101					
16-1990(6G)	Conduct System Commissioning Tests	7	7	0%	24-Apr-25	30-Apr-25	13-Jan-25	19-Jan-25	-101					
<b>Monorail Hoist System T&amp;C</b>														
16-2030(M61)	Systemwise Construction Completion Inspection	14	14	0%	01-Apr-25	14-May-25	11-Apr-25	24-May-25	10					
16-2040(M61)	Conduct Site Acceptance Tests	30	30	0%	15-Apr-25	14-May-25	25-Apr-25	24-May-25	10					
<b>Earthing &amp; Lightning Protection System T&amp;C</b>														
16-1970(6D)	Systemwise Construction Completion Inspection	10	10	0%	19-Feb-25	28-Feb-25	09-Nov-24	18-Nov-24	-102					
16-1980(6D)	Conduct Site Acceptance Tests (SAT)	14	14	0%	01-Mar-25	14-Mar-25	19-Nov-24	02-Dec-24	-102					
16-1990(6D)	Conduct System Commissioning Tests	14	14	0%	15-Mar-25	28-Mar-25	03-Dec-24	16-Dec-24	-102					
<b>Vehicle Ferry Ramp T&amp;C</b>														
16-1540(7)	Systemwise Construction Completion Inspection	10	10	0%	11-Apr-25	21-Apr-25	31-Dec-24	09-Jan-25	-101					
16-1550(7)	Conduct Site Acceptance Tests (SAT)	30	30	0%	21-Apr-25	21-May-25	10-Jan-25	08-Feb-25	-101					
<b>Incineration Processing T&amp;C</b>														
		325	141		15-May-24 A	20-Jun-25	18-Sep-24	10-Mar-25	-102					
<b>Module 1 &amp; Equipments (Train 1 &amp; 2)</b>														
16-1540	Site Acceptance Test (Systemwise Construction Completion Inspection)	120	46	61.5%	15-May-24 A	31-Mar-25	18-Sep-24	03-Nov-24	-148					
16-1550	Site Acceptance Test (Pre-commissioning Test)	120	61	49.17%	10-Jun-24 A	01-Apr-25	20-Sep-24	19-Nov-24	-133					
16-1660	System Commissioning Test (Hot Commissioning Phase 1)	80	80	0%	02-Apr-25	20-Jun-25	21-Dec-24	10-Mar-25	-102					
<b>Module 2 &amp; Equipments (Train 3 &amp; 4)</b>														
16-1560	Site Acceptance Test (Systemwise Construction Completion Inspection)	120	73	39.17%	30-Oct-24 A	16-Apr-25	06-Sep-24	17-Nov-24	-150					
16-1570	Site Acceptance Test (Pre-commissioning Test)	90	90	0%	16-Feb-25	16-May-25	19-Sep-24	17-Dec-24	-150					
<b>Module 3 &amp; Equipments (Train 5 &amp; 6)</b>														
16-1580	Site Acceptance Test (Systemwise Construction Completion Inspection)	120	120	0%	31-Jan-25	30-May-25	30-Aug-24	27-Dec-24	-154					

Activity ID	Activity Name	Original Duration	Remaining Duration	Activity % Complete	Current Start	Current Finish	Late Start	Late Finish	Total Float	M86 Remarks	2025			
											Jan 86	Feb 87	Mar 88	Apr 89
16-1590	Site Acceptance Test (Pre-commissioning Test)	90	90	0%	23-Mar-25	20-Jun-25	20-Oct-24	17-Jan-25	-154	Change predecessor 16-1580 to FF+21d				