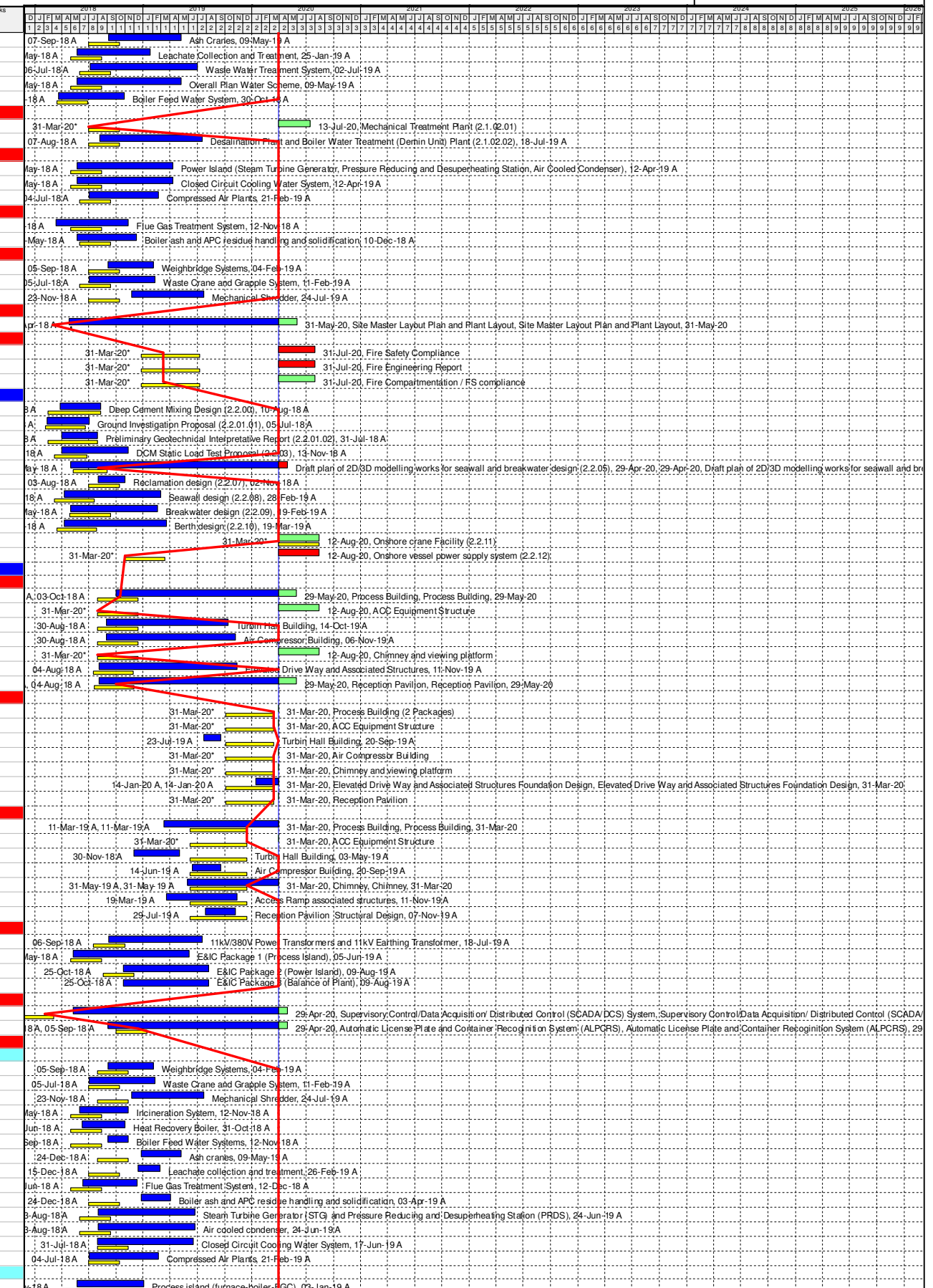


Appendix A Master Programme

Activity ID	Activity Name	Primary Constraint	At Completion Duration	Current Start	Current Finish	Actual Start	Actual Finish	Latest Start	Latest Finish	Total Float	Activity % Complete	M28 Remarks
05-1020	Ash Cranes	Start On or After	244			07-Sep-18 A	09-May-19 A				100%	
05-1030	Leachate Collection and Treatment	Start On or After	245			25-May-18 A	25-Jan-19 A				100%	
05-1040	Waste Water Treatment System	Start On or After	361			06-Jul-18 A	02-Jul-19 A				100%	
05-1050	Overall Plan Water Scheme	Start On or After	350			24-May-18 A	09-May-19 A				100%	
05-1060	Boiler Feed Water System	Start On or After	223			21-Mar-18 A	30-Oct-18 A				100%	
EP_SP_66_12-WP-3-M28.05.01.01.2	MSW treatment process design for mechanical treatment (2.1.02)		707	31-Mar-20	13-Jul-20	07-Aug-18 A	13-Jul-20	02-May-20	15-Aug-20	32		
05-1090	Mechanical Treatment Plant (2.1.02.01)	Start On or After	105	31-Mar-20	13-Jul-20	31-Mar-20*	13-Jul-20	02-May-20	15-Aug-20	32	0%	
05-1100	Desalination Plant and Boiler Water Treatment (Demin Unit) Plant (2.1.02.02)	Start On or After	345			07-Aug-18 A	18-Jul-19 A				100%	
EP_SP_66_12-WP-3-M28.05.01.01.3	Waste heat recovery and Power generation system (2.1.03)		323			24-May-18 A	12-Apr-19 A					
05-1110	Power Island (Steam Turbine Generator, Pressure Reducing and Desuperheating Station, Air Cooled Cond)	Start On or After	323			24-May-18 A	12-Apr-19 A				100%	
05-1120	Closed Circuit Cooling Water System	Start On or After	323			24-May-18 A	12-Apr-19 A				100%	
05-1130	Compressed Air Plants	Start On or After	232			04-Jul-18 A	21-Feb-19 A				100%	
EP_SP_66_12-WP-3-M28.05.01.01.4	Flue gas treatment process design for incineration (2.1.04)		270			15-Mar-18 A	10-Dec-18 A					
05-1070	Flue Gas Treatment System	Start On or After	242			15-Mar-18 A	12-Nov-18 A				100%	
05-1080	Boiler ash and APC residue handling and solidification	Start On or After	199			25-May-18 A	10-Dec-18 A				100%	
EP_SP_66_12-WP-3-M28.05.01.01.5	Logistic arrangement design for MSW and Ash and Residues (2.1.05)		384			05-Jul-18 A	24-Jul-19 A					
05-1140	Weighbridge Systems	Start On or After	152			05-Sep-18 A	04-Feb-19 A				100%	
05-1150	Waste Crane and Grapple System	Start On or After	221			05-Jul-18 A	11-Feb-19 A				100%	
05-1160	Mechanical Shredder	Start On or After	243			23-Nov-18 A	24-Jul-19 A				100%	
EP_SP_66_12-WP-3-M28.05.01.01.6	Site Master Layout Plan and Plant Layout (2.1.06)		766	31-Mar-20	31-May-20	27-Apr-18 A	31-May-20	31-Dec-20	03-Mar-21	275		
05-3020	Site Master Layout Plan and Plant Layout		766	31-Mar-20	31-May-20	27-Apr-18 A	31-May-20	31-Dec-20	03-Mar-21	275	65%	
EP_SP_66_12-WP-3-M28.05.01.01.7	Statutory Fire Compliance (2.1.25)		123	31-Mar-20	31-Jul-20	31-Mar-20*	31-Jul-20	10-Apr-19	26-Feb-21	209		
05-2990	Fire Safety Compliance	Start On or After	123	31-Mar-20	31-Jul-20	31-Mar-20*	31-Jul-20	10-Aug-19	10-Aug-19	-356	0%	
05-3000	Fire Engineering Report	Start On or After	123	31-Mar-20	31-Jul-20	31-Mar-20*	31-Jul-20	10-Apr-19	10-Aug-19	-356	0%	
05-3010	Fire Compartmentation / FS compliance	Start On or After	123	31-Mar-20	31-Jul-20	31-Mar-20*	31-Jul-20	26-Oct-20	26-Feb-21	209	0%	
EP_SP_66_12-WP-3-M28.05.01.02	AIP Ground Treatment, Reclamation, Seawall, Breakwater, Berth (2.2)		913	31-Mar-20	12-Aug-20	12-Feb-18 A	12-Aug-20	26-Nov-19	20-Jul-21	341		
05-1170	Deep Cement Mixing Design (2.2.00)	Start On or After	136			27-Mar-18 A	10-Aug-18 A				100%	
05-1180	Ground Investigation Proposal (2.2.01.01)	Start On or After	143			12-Feb-18 A	05-Jul-18 A				100%	
05-1190	Preliminary Geotechnical Interpretative Report (2.2.01.02)	Start On or After	120			03-Apr-18 A	31-Jul-18 A				100%	
05-1200	DCM Static Load Test Proposal (2.2.03)	Start On or After	224			03-Apr-18 A	13-Nov-18 A				100%	
05-1280	Draft plan of 2D/3D modelling works for seawall and breakwater design (2.2.05)	Start On or After	728	31-Mar-20	29-Apr-20	03-May-18 A	29-Apr-20	26-Nov-19	26-Dec-19	-126	80%	
05-2930	Reclamation design (2.2.07)	Start On or After	91			03-Aug-18 A	02-Nov-18 A				100%	
05-2940	Seawall design (2.2.08)	Start On or After	323			11-Apr-18 A	28-Feb-19 A				100%	
05-2950	Breakwater design (2.2.09)	Start On or After	293			02-May-18 A	19-Feb-19 A				100%	
05-2960	Berth design (2.2.10)	Start On or After	342			11-Apr-18 A	19-Mar-19 A				70%	
05-2970	Onshore crane Facility (2.2.11)	Start On or After	135	31-Mar-20	12-Aug-20	31-Mar-20*	12-Aug-20	07-Mar-21	20-Jul-21	341	0%	
05-2980	Onshore vessel power supply system (2.2.12)	Start On or After	135	31-Mar-20	12-Aug-20	31-Mar-20*	12-Aug-20	15-Dec-19	28-Apr-20	-107	0%	
EP_SP_66_12-WP-3-M28.05.01.03	AIP Incineration Plant Buildings (2.3)		961	31-Mar-20	25-Dec-20	10-May-18 A	25-Dec-20	30-Aug-18	26-Jul-22	577		
EP_SP_66_12-WP-3-M28.05.01.03.1	Architectural Design (2.3.00)		740	31-Mar-20	12-Aug-20	04-Aug-18 A	12-Aug-20	15-Dec-20	12-Aug-21	364		
05-1210	Process Building	Start On or After	605	31-Mar-20	29-May-20	03-Oct-18 A	29-May-20	15-Dec-20	13-Feb-21	259	65%	
05-1220	ACC Equipment Structure	Start On or After	135	31-Mar-20	12-Aug-20	31-Mar-20*	12-Aug-20	16-Feb-21	01-Jul-21	322	0%	
05-1230	Turbin Hall Building	Start On or After	410			30-Aug-18 A	14-Oct-19 A				100%	
05-1240	Air Compressor Building	Start On or After	433			30-Aug-18 A	06-Nov-19 A				100%	
05-1250	Chimney and viewing platform	Start On or After	135	31-Mar-20	12-Aug-20	31-Mar-20*	12-Aug-20	28-Jan-21	12-Jun-21	303	0%	
05-1260	Elevated Drive Way and Associated Structures	Start On or After	464			04-Aug-18 A	11-Nov-19 A				100%	
05-1270	Reception Pavilion	Start On or After	665	31-Mar-20	29-May-20	04-Aug-18 A	29-May-20	13-Jun-21	12-Aug-21	439	65%	
EP_SP_66_12-WP-3-M28.05.01.03.2	Foundation design (2.3.01)		252	31-Mar-20	31-Mar-20	23-Jul-19 A	31-Mar-20	02-Jul-21	19-Jun-22	810		
05-3030	Process Building (2 Packages)	Start On or After	0	31-Mar-20	31-Mar-20	31-Mar-20*	31-Mar-20	02-Jul-21	02-Jul-21	458	0%	
05-3040	ACC Equipment Structure	Start On or After	0	31-Mar-20	31-Mar-20	31-Mar-20*	31-Mar-20	18-Oct-21	18-Oct-21	566	0%	
05-3050	Turbin Hall Building	Start On or After	59			23-Jul-19 A	20-Sep-19 A				100%	
05-3060	Air Compressor Building	Start On or After	0	31-Mar-20	31-Mar-20	31-Mar-20*	31-Mar-20	27-Jan-22	27-Jan-22	667	0%	
05-3070	Chimney and viewing platform	Start On or After	0	31-Mar-20	31-Mar-20	31-Mar-20*	31-Mar-20	29-Sep-21	29-Sep-21	547	0%	
05-3080	Elevated Drive Way and Associated Structures Foundation Design	Start On or After	77	31-Mar-20	31-Mar-20	14-Jan-20 A	31-Mar-20	06-Feb-22	06-Feb-22	677	45%	
05-3090	Reception Pavilion	Start On or After	0	31-Mar-20	31-Mar-20	31-Mar-20*	31-Mar-20	19-Jun-22	19-Jun-22	810	0%	
EP_SP_66_12-WP-3-M28.05.01.03.3	Structural design (2.3.02)		487	31-Mar-20	31-Mar-20	30-Nov-18 A	31-Mar-20	14-Nov-20	26-Jul-22	847		
05-1290	Process Building	Start On or After	386	31-Mar-20	31-Mar-20	11-Mar-19 A	31-Mar-20	20-Sep-21	20-Sep-21	538	5%	
05-1300	ACC Equipment Structure	Start On or After	0	31-Mar-20	31-Mar-20	31-Mar-20*	31-Mar-20	14-Nov-20	14-Nov-20	228	0%	
05-1310	Turbin Hall Building	Start On or After	154			30-Nov-18 A	03-May-19 A				100%	
05-1320	Air Compressor Building	Start On or After	98			14-Jun-19 A	20-Sep-19 A				100%	
05-1330	Chimney	Start On or After	305	31-Mar-20	31-Mar-20	31-May-19 A	31-Mar-20	26-Jul-22	26-Jul-22	847	5%	
05-1340	Access Ramp associated structures	Start On or After	237			19-Mar-19 A	11-Nov-19 A				100%	
05-1350	Reception Pavilion Structural Design	Start On or After	101			29-Jul-19 A	07-Nov-19 A				100%	
EP_SP_66_12-WP-3-M28.05.01.03.4	Electrical and Instrumentation works design (2.3.03)		456			10-May-18 A	09-Aug-19 A					
05-3150	11kV/380V Power Transformers and 11kV Earthing Transformer	Start On or After	315			06-Sep-18 A	18-Jul-19 A				100%	
05-3160	E&I Package 1 (Process Island)	Start On or After	391			10-May-18 A	05-Jun-19 A				100%	
05-3170	E&I Package 2 (Power Island)	Start On or After	288			25-Oct-18 A	09-Aug-19 A				100%	
05-3175(3)(M12)	E&I Package 3 (Balance of Plant)	Start On or After	288			25-Oct-18 A	09-Aug-19 A				100%	
EP_SP_66_12-WP-3-M28.05.01.03.8	Operation Management System (2.3.03.04)		721	31-Mar-20	29-Apr-20	10-May-18 A	29-Apr-20	28-Apr-20	10-Sep-20	133		
05-3180	Supervisory Control/Data Acquisition/Distributed Control (SCADA/DCS) System	Start On or After	721	31-Mar-20	29-Apr-20	10-May-18 A	29-Apr-20	28-Apr-20	28-May-20	28	65%	
05-3210	Automatic License Plate and Container Recognition System (ALPCRS)	Start On or After	603	31-Mar-20	29-Apr-20	05-Sep-18 A	29-Apr-20	11-Aug-20	10-Sep-20	133	65%	
EP_SP_66_12-WP-3-M28.05.01.03.5	Mechanical works design (2.3.04)		433			17-May-18 A	24-Jul-19 A					
EP_SP_66_12-WP-3-M28.05.01.03.5.1	Plant and Equipment		419			31-May-18 A	24-Jul-19 A					
05-2800	Weighbridge Systems	Start On or After	152			05-Sep-18 A	04-Feb-19 A				100%	
05-2810	Waste Crane and Grapple System	Start On or After	221			05-Jul-18 A	11-Feb-19 A				100%	
05-2820	Mechanical Shredder	Start On or After	243			23-Nov-18 A	24-Jul-19 A				100%	
05-2830	Incineration System	Start On or After	165			31-May-18 A	12-Nov-18 A				100%	
05-2840	Heat Recovery Boiler	Start On or After	145			08-Jun-18 A	31-Oct-18 A				100%	
05-2850	Boiler Feed Water Systems	Start On or After	68			05-Sep-18 A	12-Nov-18 A				100%	
05-2860	Ash cranes	Start On or After	136			24-Dec-18 A	09-May-19 A				100%	
05-2870	Leachate collection and treatment	Start On or After	73			15-Dec-18 A	26-Feb-19 A				100%	
05-2880	Flue Gas Treatment System	Start On or After	184			11-Jun-18 A	12-Dec-18 A				100%	
05-2890	Boiler ash and APC residue handling and solidification	Start On or After	100			24-Dec-18 A	03-Apr-19 A				100%	
05-2900	Steam Turbine Generator (STG) and Pressure Reducing and Desuperheating Station (PRDS)	Start On or After	325			03-Aug-18 A	24-Jun-19 A				100%	
05-2910	Air cooled condenser	Start On or After	325			03-Aug-18 A	24-Jun-19 A				100%	
05-2915(3)	Closed Circuit Cooling Water System	Start On or After	321			31-Jul-18 A	17-Jun-19 A				100%	
05-2920	Compressed Air Plants	Start On or After	232			04-Jul-18 A	21-Feb-19 A				100%	
EP_SP_66_12-WP-3-M28.05.01.03.5.2	Process Pipeworks (Incl. Ductworks) and Valves		404			24-May-18 A	02-Jul-19 A					
05-1360	Process Island (furnace-boiler-FGC)	Start On or After	224			24-May-18 A	03-Jan-19 A				100%	



Programme for Design and Construction Works
 March 2020 Update (Rev WP-3-M28)

Primary Baseline	WP3 BL Critical Works	Remaining Work	Actual Work	Baseline Milestone	WP3 BL Critical Milestone	Milestone	Actual Milestone	Critical Milestone
------------------	-----------------------	----------------	-------------	--------------------	---------------------------	-----------	------------------	--------------------

Date	Revision	Checked	Approved
04/12/1			

Activity ID	Activity Name	Primary Constraint	At Completion Duration	Current Start	Current Finish	Actual Start	Actual Finish	Latest Start	Latest Finish	Total Float	Activity % Complete	M28 Remarks
05-1920	Structural design (2.6.02)	Start On or After	206			21-May-19 A	13-Dec-19 A				100%	
05-1930	Electrical and instrumentation works design (2.6.03)	Start On or After	289			24-Oct-18 A	09-Aug-19 A				100%	
05-1940	Mechanical works design (2.6.04)	Start On or After	195			30-Nov-18 A	13-Jun-19 A				100%	
05-1950	Fire services installation design (2.6.05) (3 Packages)	Start On or After	462	31-Mar-20	24-Jun-20	20-Mar-19 A	24-Jun-20	09-Feb-21	06-May-21	316	19%	
EP_SP_66_12-WP-3-M28.05.01.06.7 Building services design (excluding fire services installation design) (2.6.06)												
05-1960	Electrical Services and Lighting (2.6.06.01)	Start On or After	512	31-Mar-20	12-Aug-20	20-Mar-19 A	12-Aug-20	15-Apr-20	02-Dec-20	111	5%	
05-1970	MVAC	Start On or After	507	31-Mar-20	12-Aug-20	25-Mar-19 A	12-Aug-20	15-Apr-20	28-Aug-20	15	5%	
05-1980	Odour Control	Start On or After	135	31-Mar-20	12-Aug-20	31-Mar-20*	12-Aug-20	15-Apr-20	28-Aug-20	15	0%	
05-1990	Plumbing	Start On or After	512	31-Mar-20	12-Aug-20	20-Mar-19 A	12-Aug-20	04-Jul-20	16-Nov-20	95	5%	
05-2000	Drainage	Start On or After	512	31-Mar-20	12-Aug-20	20-Mar-19 A	12-Aug-20	04-Jul-20	16-Nov-20	95	5%	
05-2010	ELV	Start On or After	512	31-Mar-20	12-Aug-20	20-Mar-19 A	12-Aug-20	20-Jul-20	02-Dec-20	111	5%	
EP_SP_66_12-WP-3-M28.05.01.07 AIP Administration Building (2.7)												
05-2020	Architectural Design (2.7.00)	Start On or After	666	31-Mar-20	29-May-20	03-Aug-18 A	29-May-20	23-Oct-20	22-Dec-20	206	65%	
05-2030	Foundation design (2.7.01)	Start On or After	142			30-Sep-19 A	19-Feb-20 A				100%	
05-2040	Structural design (2.7.02)	Start On or After	446	31-Mar-20	16-Oct-20	29-Jul-19 A	16-Oct-20	09-Oct-21	27-Apr-22	557	65%	
05-2050	Electrical and instrumentation works design (2.7.03)	Start On or After	135	31-Mar-20	12-Aug-20	31-Mar-20*	12-Aug-20	04-Oct-20	16-Feb-21	187	0%	
05-2060	Fire services installation design (3 Packages) (2.7.04)	Start On or After	332	31-Mar-20	31-Jul-20	03-Sep-19 A	31-Jul-20	04-Dec-20	06-Apr-21	249	9.5%	
EP_SP_66_12-WP-3-M28.05.01.07.6 Building services design (excluding fire services installation design) (2.7.05)												
05-2070	Electrical Services and Lighting (2.7.05.01)	Start On or After	345	31-Mar-20	12-Aug-20	03-Sep-19 A	12-Aug-20	15-Apr-20	02-Dec-20	111	5%	
05-2080	MVAC	Start On or After	345	31-Mar-20	12-Aug-20	03-Sep-19 A	12-Aug-20	15-Apr-20	28-Aug-20	15	5%	
05-2090	Odour Control	Start On or After	135	31-Mar-20	12-Aug-20	31-Mar-20*	12-Aug-20	15-Apr-20	28-Aug-20	15	0%	
05-2100	Plumbing	Start On or After	345	31-Mar-20	12-Aug-20	03-Sep-19 A	12-Aug-20	04-Jul-20	16-Nov-20	95	5%	
05-2110	Drainage	Start On or After	345	31-Mar-20	12-Aug-20	03-Sep-19 A	12-Aug-20	04-Jul-20	16-Nov-20	95	5%	
05-2120	ELV	Start On or After	345	31-Mar-20	12-Aug-20	03-Sep-19 A	12-Aug-20	20-Jul-20	02-Dec-20	111	5%	
05-2130	Lifts and Escalators	Start On or After	227	31-Mar-20	12-Aug-20	30-Dec-19 A	12-Aug-20	04-Jun-20	17-Oct-20	65	5%	
05-2130-1(M20)	Building Management System (BMS)	Start On or After	89	31-Mar-20	27-Jun-20	31-Mar-20*	27-Jun-20	04-Jul-20	30-Sep-20	95	0%	
EP_SP_66_12-WP-3-M28.05.01.08 AIP IWMF Substation (2.8)												
05-2140	Architectural Design (2.8.00)	Start On or After	437			03-Aug-18 A	14-Oct-19 A				100%	
05-2150	Foundation design (2.8.01)	Start On or After	124			17-May-19 A	18-Sep-19 A				100%	
05-2160	Structural design (2.8.02)	Start On or After	168			31-Oct-18 A	17-Apr-19 A				100%	
05-2170	Electrical and instrumentation works design (2.8.03) (14 Packages)	Start On or After	245	31-Mar-20	25-Jun-20	25-Oct-19 A	25-Jun-20	02-Jul-20	27-Sep-20	93	51.67%	
05-2180	Mechanical works design (2.8.04)	Start On or After	135	31-Mar-20	12-Aug-20	31-Mar-20*	12-Aug-20	01-Mar-20	14-Jul-20	-30	0%	
05-2190	Fire services installation design (2.8.05) (2 Packages)	Start On or After	612	31-Mar-20	30-Jul-20	27-Nov-18 A	30-Jul-20	21-Sep-20	21-Jan-21	174	28.5%	
EP_SP_66_12-WP-3-M28.05.01.08.7 Building services design (excluding fire services installation design) (2.8.06)												
05-2200	Electrical Services and Lighting (2.8.06.01)	Start On or After	591	31-Mar-20	09-Jul-20	27-Nov-18 A	09-Jul-20	19-May-20	02-Dec-20	145	36%	
05-2210	MVAC	Start On or After	576	31-Mar-20	25-Jun-20	27-Nov-18 A	25-Jun-20	06-Sep-20	02-Dec-20	160	36%	
05-2220	Plumbing	Start On or After	591	31-Mar-20	09-Jul-20	27-Nov-18 A	09-Jul-20	07-Aug-20	16-Nov-20	129	65%	
05-2230	Drainage	Start On or After	387	31-Mar-20	28-Jun-20	27-Nov-18 A	28-Jun-20	03-Sep-20	02-Dec-20	156	65%	
05-2240	ELV	Start On or After	580	31-Mar-20	28-Jun-20	27-Nov-18 A	28-Jun-20	03-Sep-20	02-Dec-20	156	65%	
05-2240-1(M20)	Building Management System (BMS)	Start On or After	89	31-Mar-20	27-Jun-20	31-Mar-20*	27-Jun-20	03-Jul-20	29-Sep-20	94	0%	
EP_SP_66_12-WP-3-M28.05.01.09 AIP Air Quality Monitoring Stations (2.9)												
05-2250	Design of the Air Quality Monitoring Stations (2.9.01)	Start On or After	120	31-Mar-20	28-Jul-20	31-Mar-20*	28-Jul-20	06-Jul-20	03-Nov-20	97	0%	
EP_SP_66_12-WP-3-M28.05.01.10 AIP Roads and Utilities (2.10)												
EP_SP_66_12-WP-3-M28.05.01.10.1 Permanent road works layout on the Artificial Island (2.10.01)												
05-2260	Roads and hardstandings layout	Start On or After	135	17-Dec-20	30-Apr-21	17-Dec-20*	30-Apr-21	26-Aug-22	07-Jun-23	767	0%	
05-2270	Road signage and markings	Start On or After	135	17-Dec-20	30-Apr-21	17-Dec-20*	30-Apr-21	23-Jan-23	07-Jun-23	767	0%	
EP_SP_66_12-WP-3-M28.05.01.10.2 Sewerage design on the Artificial Island (2.10.02)												
05-2280	Foul Sewerage concept sizing	Start On or After	330	31-Mar-20	12-Aug-20	18-Sep-19 A	12-Aug-20	03-Aug-20	30-Jan-22	535	65%	
05-2290	Contaminated Sewerage concept / sizing	Start On or After	330	31-Mar-20	12-Aug-20	18-Sep-19 A	12-Aug-20	17-Sep-21	30-Jan-22	535	65%	
EP_SP_66_12-WP-3-M28.05.01.10.3 Drainage system design on the Artificial Island (2.10.03)												
05-2300	Surface Water Drainage System concept / sizing	Start On or After	449	31-Mar-20	12-Aug-20	22-May-19 A	12-Aug-20	03-Aug-20	16-Dec-20	125	65%	
05-2310	First Flush Drainage System concept / sizing	Start On or After	449	31-Mar-20	12-Aug-20	22-May-19 A	12-Aug-20	21-Nov-20	05-Apr-21	235	65%	
EP_SP_66_12-WP-3-M28.05.01.10.4 Water supply system design on the Artificial Island (2.10.04)												
05-2320	Potable Water Distribution System (2.10.04.01)	Start On or After	349	31-Mar-20	12-Aug-20	30-Aug-19 A	12-Aug-20	30-Nov-19	01-Mar-22	565	5%	
05-2330	Recycled Water System (2.10.04.02)	Start On or After	272	31-Mar-20	12-Aug-20	14-Nov-19 A	12-Aug-20	28-Aug-21	10-Jan-22	515	5%	
05-2340	Irrigation System (2 Packages) (2.10.04.03)	Start On or After	135	31-Mar-20	12-Aug-20	31-Mar-20*	12-Aug-20	03-Aug-20	16-Dec-20	125	0%	
05-2350	Rainwater harvesting System (2.10.04.04)	Start On or After	135	31-Mar-20	12-Aug-20	31-Mar-20*	12-Aug-20	03-Aug-20	16-Dec-20	125	0%	
05-2360	Water Tanks (2.10.04.05)	Start On or After	135	31-Mar-20	12-Aug-20	31-Mar-20*	12-Aug-20	17-Oct-21	01-Mar-22	565	0%	
05-2370	External FS Systems (2.10.04.06)	Start On or After	283	31-Mar-20	12-Aug-20	04-Nov-19 A	12-Aug-20	17-Oct-21	01-Mar-22	565	5%	
05-2370-1(M24)	E&M system for seawater intake and brine discharge (2.10.04.07)	Finish On or Before	307	31-Mar-20	01-Jul-20	30-Aug-19 A	01-Jul-20*	30-Nov-19	01-Mar-20	-122	5%	
05-2370-2(M24)	Building Services system for seawater intake and brine discharge (2.10.04.09)	Finish On or Before	88	31-Mar-20	26-Jun-20	31-Mar-20	26-Jun-20*	30-Nov-19	25-Feb-20	-122	0%	
EP_SP_66_12-WP-3-M28.05.01.10.6 Design of telecommunication and other utilities (2.10.06)												
05-2380	Power Distribution System concept / schematics	Start On or After	135	31-Mar-20	12-Aug-20	31-Mar-20*	12-Aug-20	31-Dec-20	15-May-21	275	0%	
05-2390	Site Lighting Concept / Schematics	Start On or After	239	31-Mar-20	12-Aug-20	18-Dec-19 A	12-Aug-20	26-Jan-20	09-Jun-20	-65	5%	
05-2400	Lightning Protection System concept / schematics	Start On or After	239	31-Mar-20	12-Aug-20	18-Dec-19 A	12-Aug-20	13-Aug-20	26-Dec-20	135	5%	
05-2410	Site ELV Network System - Communications System concept / schematics	Start On or After	135	31-Mar-20	12-Aug-20	31-Mar-20*	12-Aug-20	31-Dec-20	15-May-21	275	0%	
05-2420	Site ELV Network System - Security Systems concept / schematics	Start On or After	135	31-Mar-20	12-Aug-20	31-Mar-20*	12-Aug-20	31-Dec-20	15-May-21	275	0%	
05-2430	Site ELV Network System - Navigation aids concept / schematics	Start On or After	135	31-Mar-20	12-Aug-20	31-Mar-20*	12-Aug-20	31-Dec-20	15-May-21	275	0%	
05-2440	Microwave transmission of FS direct link (2.10.06.07)	Start On or After	580	31-Mar-20	28-Jun-20	27-Nov-18 A	28-Jun-20	14-Feb-21	15-May-21	320	45%	
05-2450	Fuel Handling System concept / schematics (2.10.06.08)	Start On or After	202	31-Mar-20	12-Aug-20	24-Jan-20 A	12-Aug-20	10-Sep-22	23-Jan-23	893	0%	
05-3190	Computerised Maintenance Management System (CMMS)	Start On or After	380	31-Mar-20	13-Jul-20	30-Jun-19 A	13-Jul-20	28-May-20	10-Sep-20	58	0%	
05-3200	Information and Document Management System (IDMS)	Start On or After	448	31-Mar-20	13-Jul-20	23-Apr-19 A	13-Jul-20	28-May-20	10-Sep-20	58	0%	
05-3840 (M22)	Automatic Traffic Control System (ATCS)	Start On	300	31-Mar-20	24-Jan-21	31-Mar-20*	24-Jan-21	18-Dec-19	12-Oct-20	-104	0%	
EP_SP_66_12-WP-3-M28.05.01.10.7 Utility ducts/Pipebridges design (2.10.25)												
05-2460	Design of Pipe / Utilities Trenches concept	Start On or After	135	30-May-21	11-Oct-21	30-May-21*	11-Oct-21	19-Dec-22	03-May-23	568	0%	
05-2470	Utility ducts network	Start On or After	135	31-Mar-20	12-Aug-20	31-Mar-20*	12-Aug-20	19-Apr-20	01-Sep-20	19	0%	
05-2480	Pipebridge network - Layout	Start On or After	120	31-Mar-20	28-Jul-20	31-Mar-20*	28-Jul-20	04-May-20	01-Sep-20	34	0%	
05-2490	Pipebridge network - Foundation Plan	Start On or After	135	31-Mar-20	12-Aug-20	31-Mar-20*	12-Aug-20	19-Apr-20	01-Sep-20	19	0%	
05-2500	Pipebridge network - Structure Plan	Start On or After	135	31-Mar-20	12-Aug-20	31-Mar-20*	12-Aug-20	19-Apr-20	01-Sep-20	19	0%	
EP_SP_66_12-WP-3-M28.05.01.11 AIP Architectural, Finishes and Landscaping Works (2.11)												
EP_SP_66_12-WP-3-M28.05.01.11.1 External and internal finishes design for Incineration Plant Buildings (2.11.01)												
05-2510	External and internal finishes design for Incineration Plant Building (6 Packages)	Start On or After	137	31-Mar-20	14-Aug-20	31-Mar-20*	14-Aug-20	28-Jun-21	12-Nov-21	454	0%	
05-2520	External and internal finishes design for ACC Equipment Structure	Start On or After	137	31-Mar-20	14-Aug-20	31-Mar-20*	14-Aug-20	28-Jun-21	12-Nov-21	454	0%	
05-2530	External and internal finishes design for Turbine Hall Building (3 Packages)	Start On or After	137	31-Mar-20	14-Aug-20	31-Mar-20*	14-Aug-20	26-Sep-21	10-Feb-22	544	0%	
05-2540	External and internal finishes design for Air Compressor Building (3 Packages)	Start On or After	137	31-Mar-20	14-Aug-20	31-Mar-20*	14-Aug-20	24-Aug-21	08-Jan-22	511	0%	
05-2550	External and internal finishes design for Chimney (6 Packages)	Start On or After	137	31-Mar-20	14-Aug-20	31-Mar-20*	14-Aug-20	27-Aug-21	11-Jan-22	514	0%	
05-2560	External and internal finishes design for Reception Pavilion (5 Packages)	Start On or After	137	31-Mar-20	14-Aug-20	31-Mar-20*	14-Aug-20	27-Aug-21	11-Jan-22	514	0%	
EP_SP_66_12-WP-3-M28.05.01.11.2 External and internal finishes design for MT Plant Building (2.11.02)												
05-2570	External and internal finishes design for MT Plant Building (2.11.02)	Start On or After	136	31-Mar-20	13-Aug-20	31-Mar-20	13-Aug-20	13-Jun-21	27-Oct-21	439	0%	

Date	Revision	Checked	Approved
04/12/17	Rev. 0 - 1st Issue		
31-Jan-20	Rev 3 - Jan 2020 Update		
29-Feb-20	Rev 3 - Feb 2020 Update		
30-Mar-20	Rev 3 - Mar 2020 Update		

Primary Baseline	Critical
------------------	----------

