

## Appendix A Master Programme

Activity ID	Activity Name	Original Duration	Remaining Duration	Activity % Complete	Current Start	Current Finish	Late Start	Late Finish	Total Float	M85 Remarks
<b>Programme for Design and Construction Works WP7B-M85 - 3-Month</b>										
<b>Key Dates</b>										
<b>Contractual Key Dates</b>										
01-1020(7A) Extension of Time (EOT) Granted (in working days)										
<b>License/Permit Applications</b>										
<b>License Application for Brine Discharge</b>										
03-3980(7) Issuance of Temporary License by EPD										
03-3990(7) Public Consultation										
03-4000(7) Issuance of Conditional License by EPD										
03-4010(7) Issuance of Brine Discharge License by EPD										
<b>DG Licence</b>										
<b>Day Tank &amp; Fuel Oil Storage (Cat 5)</b>										
03-1410 DGD and VD Review and Approval of Submission										
<b>E. Gen RM for WMF Substation</b>										
03-1420 DGD Compliance Inspection, Defects Rectification and Re-inspection										
03-1430 VD Compliance Inspection, Defects Rectification and Re-inspection										
03-1440 Issue of DG License										
<b>Fuel Oil System</b>										
03-3850 DGD Compliance Inspection, Defects Rectification and Re-inspection										
03-3860 VD Compliance Inspection, Defects Rectification and Re-inspection										
03-3870 Issuance of DG License										
<b>Chemical Stores (all Cat)</b>										
03-1490 DGD and VD Review and Approval of Submission										
03-1500 DGD Compliance Inspection, Defects Rectification and Re-inspection										
03-1510 VD Compliance Inspection, Defects Rectification and Re-inspection										
03-1520 Issuance of DG License										
<b>Boilers and Pressure Vessels License</b>										
03-1930(3) L1 & L2 Preparation and Submit inspection report and associated document to LD										
03-1940(3) L1 & L2 Issuance of all Boiler License										
03-1950(M83) L3 & L4 Completion of on-site boiler installation & Testing										
03-1960(M83) L3 & L4 Preparation and Submit inspection report and associated document to LD										
03-1970(M83) L3 & L4 Issuance of all Boiler License										
03-1980(M83) L5 & L6 Completion of on-site boiler installation & Testing										
03-1980(M83)10 L5 & L6 Preparation and Submit inspection report and associated document to LD										
<b>Lifts or Escalators</b>										
03-1060 Notification of Commencement of Works Involving Installation or Maintenance										
<b>Design Submissions</b>										
<b>AIP Design Package Submissions</b>										
<b>AIP Testing and Commissioning (2.12)</b>										
05-2680 Plant commissioning plan (2.12.04)										
<b>AIP Miscellaneous Works (2.14)</b>										
05-2710 Existing onshore crane replacement works at Portion 2										
<b>AIP O&amp;M Packages</b>										
05-8010(6E) Warehouse (O&M Scope)										
05-8020(6E) Workshop (O&M Scope)										
05-8050-1(M55) Design of (pilot) Electric Vehicle										
<b>DDA Design Package Submissions</b>										
<b>DDA Ground Treatment, Reclamation, Seawall, Breakwater, Berth (2.2)</b>										
05-3450 Seawall design (2.2.20)										
05-3460 Breakwater design (2.2.21)										
05-3470 Berth design (2.2.22)										
05-3480 Onshore crane Facility (2.2.23)										
05-3490 Onshore vessel power supply system (2.2.24)										
<b>DDA Incineration Plant Buildings (2.3)</b>										
<b>Electrical and instrumentation works design (2.3.15)</b>										
<b>Operation Management System (2.3.15.04)</b>										
05-5400-1(M22) Automatic Traffic Control System (ATCS)										
<b>2.3.15.05</b>										
05-3390-4(M55) Electrical and Instrumentation Works - Waste Crane and Grapple System (2.3.15.05.04)										
<b>Building services design (excluding fire services installation design) (2.3.18)</b>										
05-3750 Lifts and Escalators										
05-3780 Vehicle & Container Wash System										
<b>DDA Mechanical Treatment Plant Building (2.4)</b>										
05-5190 Electrical and instrumentation works design										
05-5200 Mechanical works design (2.4.16)										
<b>Building services design (excluding fire services installation design) (2.4.18)</b>										
05-3910 Lifts and Escalators										
<b>DDA Wastewater Treatment Plant (2.5)</b>										
05-3960 Mechanical works design (2.5.16) (5 Packages)										
<b>DDA Water Treatment Plant Building (2.6)</b>										
05-4090 Mechanical works design (2.6.16)										

3-Month Rolling Programme (December 2024)

■ Actual Work      ■ Critical Remaining Work      ◆ Actual Milestone  
■ Remaining Work      ◆ Milestone      ◆ Critical Milestone

Activity ID	Activity Name	Original Duration	Remaining Duration	Activity % Complete	Current Start	Current Finish	Late Start	Late Finish	Total Float	M85 Remarks	2024			
											Dec 85	Jan 86	Feb 87	Mar 88
<b>Electrical and instrumentation works design (2.6.15)</b>														
05-4080	Water Treatment Plant (WTP) - Variable Speed Drive (2.6.15.01)	238	18	92.44%	11-Apr-22 A	30-Jan-25	14-Dec-24	27-Oct-25	270					
05-7450(7B)	WTP Process Control Philosophy (2.6.15.05.03)	90	31	65.56%	16-Jan-24 A	30-Jan-25	27-Sep-25	27-Oct-25	270					
<b>DDA Administration Building (2.7)</b>														
05-4200	Electrical and instrumentation works design (2.7.13)	90	20		02-Dec-22 A	19-Jan-25	06-Dec-24	14-Apr-25	85					
<b>Building services design (excluding fire services installation design) (2.7.15)</b>														
05-4280	Lifts and Escalators	90	7	92.22%	13-Jul-23 A	06-Jan-25	06-Dec-24	12-Dec-24	-25					
<b>DDA IWMF Substation (2.8)</b>														
<b>Electrical and instrumentation works design (2.8.15)</b>														
2.8.15.06		90	6		16-Oct-21 A	05-Jan-25	25-Dec-24	30-Dec-24	-6					
05-4320	Electrical and instrumentation works design (2.8.15.06.01 to 40)	90	6	93.33%	16-Oct-21 A	05-Jan-25	25-Dec-24	30-Dec-24	-6					
<b>DDA Chimney</b>														
<b>Building services design (excluding fire services installation design)</b>														
05-6050-1(5a)	Lift	90	6	93.33%	13-Jul-23 A	05-Jan-25	07-Dec-24	12-Dec-24	-24					
<b>DDA Roads and Utilities (2.10)</b>														
<b>Permanent road works layout on the Artificial Island (2.10.13)</b>														
05-4480	Road signage and markings	90	18	80%	08-Aug-22 A	17-Jan-25	07-Feb-25	24-Feb-25	38					
05-5400	Roads and hardstandings layout	90	18	80%	08-Aug-22 A	17-Jan-25	07-Feb-25	24-Feb-25	38					
<b>Sewerage design on the Artificial Island (2.10.14)</b>														
05-4430	Foul Sewerage	60	15	75%	14-Mar-23 A	14-Jan-25	25-Apr-25	09-May-25	115					
05-4440	Contaminated Sewerage (Site Wide Sewerage System)	60	15	75%	14-Mar-23 A	14-Jan-25	25-Apr-25	09-May-25	115					
05-4440-2(M55)	Ship-to-shore Sewage Transfer System for Passenger Ferry	90	32	64.91%	13-Jan-21 A	31-Jan-25	14-Apr-25	15-May-25	104					
<b>Drainage system design on the Artificial Island (2.10.15)</b>														
05-5310	Surface water Drainage System	90	18	80%	22-Feb-23 A	17-Jan-25	22-Apr-25	09-May-25	112					
05-5340(M81)	Pipework Design and Operation for Brine Discharge (2.10.15.05)	90	31	65.56%	20-Feb-23 A	30-Jan-25	16-Mar-25	15-Apr-25	75					
<b>Water supply system design on the Artificial Island (2.10.16)</b>														
05-5290	Water Tanks (2.11.20.01)	60	18	70%	28-Apr-21 A	17-Jan-25	11-Oct-24	28-Oct-24	-81					
05-5300-1(M24)	E&M system for seawater intake (2.10.16.07)	105	14	86.67%	04-Apr-22 A	13-Jan-25	15-Oct-24	28-Oct-24	-77					
05-5300-3(5a)	Chemical scrubber system for odour control (2.10.16.10.01)	105	32	70%	18-Dec-23 A	31-Jan-25	27-Sep-24	28-Oct-24	-95					
<b>Design of telecommunication and other utilities (2.10.18)</b>														
05-4580	Power Distribution System concept / schematics (2.10.18.01.01)	45	30	60%	25-Mar-23 A	29-Jan-25	16-Aug-24	14-Sep-24	-137					
05-4590	Site Lighting Concept / Schematics (2.10.18.02.01)	45	30	60%	03-Oct-23 A	29-Jan-25	28-Oct-24	26-Nov-24	-64					
05-4600	Lightning Protection System concept / schematics (2.10.18.03.01)	45	30	60%	11-Jun-24 A	29-Jan-25	28-Oct-24	26-Nov-24	-64					
05-4610	Site ELV Network System - Communications System concept / schematics	75	30	60%	16-Aug-22 A	29-Jan-25	28-Oct-24	26-Nov-24	-64					
05-4620	Site ELV Network System - Security Systems concept / schematics	75	30	60%	14-Jun-22 A	29-Jan-25	28-Oct-24	26-Nov-24	-64					
05-4630	Site ELV Network System - Navigation aids concept / schematics	60	60	0%	31-Dec-24	28-Feb-25	28-Sep-24	26-Nov-24	-94					
05-4640	Microwave transmission of FS direct link	105	3	97.14%	22-Aug-22 A	02-Jan-25	24-Nov-24	26-Nov-24	-37					
05-4650	Fuel Handling System concept / schematics	60	30	50%	14-Dec-24 A	29-Jan-25	10-Oct-24	08-Nov-24	-82					
<b>DDA Architectural, Finishes and Landscaping Works (2.11)</b>														
<b>External and internal finishes design</b>														
05-4670	External and internal finishes design for Incineration Plant Building (2.11.15.01)	90	22	75.08%	19-Sep-22 A	22-Jan-25	05-Nov-24	27-Nov-24	-56					
05-4720	External and internal finishes design for Reception Pavilion (2.11.01.05)	90	28	68.89%	10-Nov-22 A	27-Jan-25	30-Dec-24	26-Jan-25	-1					
05-4730	External and internal finishes design for MT Plant Building (2.11.16)	60	18	69.68%	16-Aug-23 A	18-Jan-25	23-Oct-24	10-Nov-24	-68					
05-4740	External and internal finishes design for the Wastewater Treatment Plant (2.11.17)	60	17	71.33%	06-Jun-23 A	17-Jan-25	19-Nov-24	06-Dec-24	-41					
05-4750	External and internal finishes design for the Water Treatment Plant Building (2.11.08)	60	19	68.89%	16-Aug-23 A	18-Jan-25	16-Oct-24	03-Nov-24	-76					
05-4760	External and internal finishes design for the Administration Building (2.11.19)	60	19	68.37%	21-Sep-23 A	18-Jan-25	12-Dec-24	30-Dec-24	-19					
05-5430	External and internal finishes design for Elevated Driveway	90	22	75.72%	15-Jun-21 A	21-Jan-25	10-Sep-24	01-Oct-24	-112					
<b>Landscaping Works (2.11.21)</b>														
05-4780	Landscape Masterplan & Landscape Design for Water Feature (2.11.19.01)	105	2	98%	26-Jan-23 A	02-Jan-25	27-Apr-25	29-Apr-25	118					
<b>DDA Testing and Commissioning (2.12)</b>														
05-4810-2(M55)	FAT of DCS - Software SIL FAT Plant for Process Island (2.12.09.03.01)	105	10	90.48%	19-May-22 A	09-Jan-25	27-Nov-24	06-Dec-24	-34					
<b>DDA Transportation Facilities for the Operation (2.13)</b>														
05-4850	Design of vehicles for MSW and Ash and Residues delivery (2.13.05)	186	186	0%	30-Jan-25	03-Aug-25	25-Apr-25	27-Oct-25	85					
05-4860	Design of marine vessels for the use of the Employer and visitors (2.13.06)	240	121	49.58%	30-Jun-23 A	30-Apr-25	29-Jun-25	27-Oct-25	180					
<b>DDA Miscellaneous Works (2.14)</b>														
05-4870	Process Related CCTV and Existing onshore crane replacement works at Portion 2 (2.14.05)	220	148	32.73%	20-Oct-24 A	27-May-25	02-Nov-25	29-Mar-26	306					
05-4880	Design of visitors and environmental education facilities (2.14.06)	62	62	0%	30-Jan-25	01-Apr-25	27-Jun-25	27-Aug-25	148					
<b>DDA Miscellaneous Detailing (2.15)</b>														
05-4890	Covered walkway at passenger berth (2.15.09)	70	21	70%	06-Sep-23 A	20-Jan-25	04-Oct-24	25-Oct-24	-88					
05-4900	Gatehouses (2.15.09)	60	18	70%	06-Sep-23 A	17-Jan-25	07-Feb-25	24-Feb-25	38					
05-4910	Weighbridge office (2.15.08)	32	26	20%	01-Nov-24 A	25-Jan-25	19-Oct-24	13-Nov-24	-73					
<b>DDA Auxiliary Plant Systems (2.16)</b>														
05-4930	Vehicle Fuel Filling Station (2.16.05)	30	24	20%	07-Mar-23 A	23-Jan-25	16-Sep-24	09-Oct-24	-106					
05-4940-2(5a)	Hoisting systems (2.16.10)	180	31	82.78%	24-May-23 A	30-Jan-25	11-Mar-25	10-Apr-25	70					
<b>DDA O&amp;M Packages</b>														
05-8070(6E)	Warehouse (O&M Scope)	181	181	0%	31-Jan-25	30-Jul-25	25-Oct-24	23-Apr-25	-98					
05-8080(6E)	Workshop (O&M Scope)	181	181	0%	31-Jan-25	30-Jul-25	25-Oct-24	23-Apr-25	-98					
05-8090(6E)	Ash & Residues Container (O&M Scope)	180	151	16.11%	24-Dec-24 A	30-May-25	24-Nov-24	23-Apr-25	-37					
05-8110(6E)	Other Mobile Plants (O&M Scope)	181	181	0%	30-Jan-25	29-Jul-25	25-Oct-24	23-Apr-25	-97					
05-8110-1(M55)	Design of (pilot) Electric Vehicle	180	180	0%	28-Feb-25	26-Aug-25	25-Dec-24	22-Jun-25	-65					
<b>System Commissioning Plan</b>														
05-4820-1(M83)	SAT Trial Plan Volume (2)	90	27	70%	12-Apr-24 A	26-Jan-25	17-Aug-24	24-Feb-25	-4					

Activity ID	Activity Name	Original Duration	Remaining Duration	Activity % Complete	Current Start	Current Finish	Late Start	Late Finish	Total Float	M85 Remarks	2024		2025		Mar 88
											Dec 85	Jan 86	Feb 87	Mar 88	
05-4830	System Commissioning Plan	90	60	80%	13-Aug-24 A	28-Feb-25	27-Dec-24	24-Feb-25	-4						System Commissioning Plan
<b>Procurement of Major Equipment</b>															
		1061	230		23-May-22 A	17-Aug-25	30-Jul-24	16-Mar-25	-154						
<b>Off-site Fabrication of Incineration Modules</b>															
		919	74		23-May-22 A	14-Mar-25	12-Oct-24	27-Dec-24	-77						
<b>Fabrication of Module (TPU)</b>															
		919	74		23-May-22 A	14-Mar-25	12-Oct-24	27-Dec-24	-77						
<b>PFab 1- Line 1</b>															
		78	32		10-Jun-24 A	31-Jan-25	05-Nov-24	06-Dec-24	-56						
<b>Precommissioning</b>															
06-TPU-1-1030	PFab 1-Line 1 - Pre-commissioning	78	32	58.97%	10-Jun-24 A	31-Jan-25	05-Nov-24	06-Dec-24	-56						PFab 1-Line 1 - Pre-commissioning
<b>PFab 1- Line 2</b>															
		70	32		30-Sep-24 A	31-Jan-25	05-Nov-24	06-Dec-24	-56						
<b>Precommissioning</b>															
06-TPU-2-1020	PFab 1-Line 2 - Pre-commissioning	70	32	54.29%	30-Sep-24 A	31-Jan-25	05-Nov-24	06-Dec-24	-56						PFab 1-Line 2 - Pre-commissioning
<b>PFab 1- Line 3</b>															
		861	62		23-May-22 A	02-Mar-25	12-Oct-24	24-Dec-24	-68						
<b>E&amp;I Installation</b>															
		238	32		27-May-24 A	31-Jan-25	12-Oct-24	12-Nov-24	-80						
<b>Electrical</b>															
06-TPU-3-1270	PFab 1-Line 3 - Electrical Cable Pulling and Termination	180	32	82.22%	27-May-24 A	31-Jan-25	12-Oct-24	12-Nov-24	-80						PFab 1-Line 3 - Electrical Cable Pulling and Termination
06-TPU-3-1280	PFab 1-Line 3 - Electrical Equipment Installation	180	32	82.22%	03-Jun-24 A	31-Jan-25	12-Oct-24	12-Nov-24	-80						PFab 1-Line 3 - Electrical Equipment Installation
<b>Instrument</b>															
06-TPU-3-1300	PFab 1-Line 3 - Instrument Cable Pulling and Termination	180	32	82.22%	27-May-24 A	31-Jan-25	12-Oct-24	12-Nov-24	-80						PFab 1-Line 3 - Instrument Cable Pulling and Termination
06-TPU-3-1310	PFab 1-Line 3 - Instrument Equipment Installation	180	32	82.22%	03-Jun-24 A	31-Jan-25	12-Oct-24	12-Nov-24	-80						PFab 1-Line 3 - Instrument Equipment Installation
06-TPU-3-1320	PFab 1-Line 3 - Instrument Tubing Installation	180	32	82.22%	03-Jun-24 A	31-Jan-25	12-Oct-24	12-Nov-24	-80						PFab 1-Line 3 - Instrument Tubing Installation
<b>Insulation</b>															
06-TPU-3-1010	PFab 1-Line 3 - Insulation	769	31	95.97%	23-May-22 A	30-Jan-25	24-Nov-24	24-Dec-24	-37						PFab 1-Line 3 - Insulation
<b>Precommissioning</b>															
06-TPU-3-1020	PFab 1-Line 3 - Pre-commissioning	60	60	0%	02-Jan-25	02-Mar-25	26-Oct-24	24-Dec-24	-68	Update Original Duration from 62d to 60d					PFab 1-Line 3 - Pre-commissioning
<b>PFab 1- Line 4</b>															
		891	60		25-May-22 A	28-Feb-25	12-Oct-24	24-Dec-24	-66						
<b>E&amp;I Installation</b>															
		238	32		03-Jun-24 A	31-Jan-25	12-Oct-24	12-Nov-24	-80						
<b>Electrical</b>															
06-TPU-4-1270	PFab 1-Line 4 - Electrical Cable Pulling and Termination	180	32	82.22%	03-Jun-24 A	31-Jan-25	12-Oct-24	12-Nov-24	-80						PFab 1-Line 4 - Electrical Cable Pulling and Termination
06-TPU-4-1280	PFab 1-Line 4 - Electrical Equipment Installation	180	32	82.22%	03-Jun-24 A	31-Jan-25	12-Oct-24	12-Nov-24	-80						PFab 1-Line 4 - Electrical Equipment Installation
<b>Instrument</b>															
06-TPU-4-1300	PFab 1-Line 4 - Instrument Cable Pulling and Termination	180	32	82.22%	03-Jun-24 A	31-Jan-25	12-Oct-24	12-Nov-24	-80						PFab 1-Line 4 - Instrument Cable Pulling and Termination
06-TPU-4-1310	PFab 1-Line 4 - Instrument Equipment Installation	180	32	82.22%	03-Jun-24 A	31-Jan-25	12-Oct-24	12-Nov-24	-80						PFab 1-Line 4 - Instrument Equipment Installation
06-TPU-4-1320	PFab 1-Line 4 - Instrument Tubing Installation	180	32	82.22%	03-Jun-24 A	31-Jan-25	12-Oct-24	12-Nov-24	-80						PFab 1-Line 4 - Instrument Tubing Installation
<b>Insulation</b>															
06-TPU-4-1010	PFab 1-Line 4 - Insulation	767	31	95.96%	25-May-22 A	30-Jan-25	24-Nov-24	24-Dec-24	-37						PFab 1-Line 4 - Insulation
<b>Precommissioning</b>															
06-TPU-4-1020	PFab 1-Line 4 - Pre-commissioning	53	53	0%	07-Jan-25	28-Feb-25	02-Nov-24	24-Dec-24	-66						PFab 1-Line 4 - Pre-commissioning
<b>PFab 1- Line 5</b>															
		822	74		04-Jun-22 A	14-Mar-25	15-Oct-24	27-Dec-24	-77						
<b>E&amp;I Installation</b>															
		224	60		01-Aug-24 A	28-Feb-25	15-Oct-24	13-Dec-24	-77						
<b>Electrical</b>															
06-TPU-5-1270	PFab 1-Line 5 - Electrical Cable Pulling and Termination	180	60	66.67%	01-Aug-24 A	28-Feb-25	15-Oct-24	13-Dec-24	-77						PFab 1-Line 5 - Electrical Cable Pulling and Termination
06-TPU-5-1280	PFab 1-Line 5 - Electrical Equipment Installation	180	60	66.67%	01-Aug-24 A	28-Feb-25	15-Oct-24	13-Dec-24	-77						PFab 1-Line 5 - Electrical Equipment Installation
<b>Instrument</b>															
06-TPU-5-1300	PFab 1-Line 5 - Instrument Cable Pulling and Termination	180	60	66.67%	01-Aug-24 A	28-Feb-25	15-Oct-24	13-Dec-24	-77						PFab 1-Line 5 - Instrument Cable Pulling and Termination
06-TPU-5-1310	PFab 1-Line 5 - Instrument Equipment Installation	180	60	66.67%	01-Aug-24 A	28-Feb-25	15-Oct-24	13-Dec-24	-77						PFab 1-Line 5 - Instrument Equipment Installation
06-TPU-5-1320	PFab 1-Line 5 - Instrument Tubing Installation	180	60	66.67%	01-Aug-24 A	28-Feb-25	15-Oct-24	13-Dec-24	-77						PFab 1-Line 5 - Instrument Tubing Installation
<b>Insulation</b>															
06-TPU-5-1010	PFab 1-Line 5 - Insulation	822	60	92.7%	04-Jun-22 A	28-Feb-25	15-Oct-24	13-Dec-24	-77						PFab 1-Line 5 - Insulation
<b>Precommissioning</b>															
06-TPU-5-1020	PFab 1-Line 5 - Pre-commissioning	43	43	0%	31-Jan-25	14-Mar-25	15-Nov-24	27-Dec-24	-77	Update Original Duration from 60d to 43d					PFab 1-Line 5 - Pre-commissioning
<b>PFab 1- Line 6</b>															
		850	74		08-Jul-22 A	14-Mar-25	15-Oct-24	27-Dec-24	-77						
<b>E&amp;I Installation</b>															
		224	60		01-Aug-24 A	28-Feb-25	15-Oct-24	13-Dec-24	-77						
<b>Electrical</b>															
06-TPU-6-1270	PFab 1-Line 6 - Electrical Cable Pulling and Termination	180	60	66.67%	01-Aug-24 A	28-Feb-25	15-Oct-24	13-Dec-24	-77						PFab 1-Line 6 - Electrical Cable Pulling and Termination
06-TPU-6-1280	PFab 1-Line 6 - Electrical Equipment Installation	180	60	66.67%	01-Aug-24 A	28-Feb-25	15-Oct-24	13-Dec-24	-77						PFab 1-Line 6 - Electrical Equipment Installation
<b>Instrument</b>															
06-TPU-6-1300	PFab 1-Line 6 - Instrument Cable Pulling and Termination	180	60	66.67%	01-Aug-24 A	28-Feb-25	15-Oct-24	13-Dec-24	-77						PFab 1-Line 6 - Instrument Cable Pulling and Termination
06-TPU-6-1310	PFab 1-Line 6 - Instrument Equipment Installation	180	60	66.67%	01-Aug-24 A	28-Feb-25	15-Oct-24	13-Dec-24	-77						PFab 1-Line 6 - Instrument Equipment Installation
06-TPU-6-1320	PFab 1-Line 6 - Instrument Tubing Installation	180	60	66.67%	01-Aug-24 A	28-Feb-25	15-Oct-24	13-Dec-24	-77						PFab 1-Line 6 - Instrument Tubing Installation
<b>Insulation</b>															
06-TPU-6-1010	PFab 1-Line 6 - Insulation	761	60	92.12%	08-Jul-22 A	28-Feb-25	15-Oct-24	13-Dec-24	-77						PFab 1-Line 6 - Insulation
<b>Precommissioning</b>															
06-TPU-6-1020	PFab 1-Line 6 - Pre-commissioning	44	44	0%	30-Jan-25	14-Mar-25	14-Nov-24	27-Dec-24	-77						PFab 1-Line 6 - Pre-commissioning
<b>Fabrication of Module (FGC)</b>															
		863	74		30-Jun-22 A	14-Mar-25	12-Oct-24	27-Dec-24	-77						
<b>PFab 2 - Line 1</b>															
		78	32		10-Jun-24 A	31-Jan-25	05-Nov-24	06-Dec-24	-56						
<b>Precommissioning</b>															
06-FGC-1-1190	PFab 2-Line 1 - Pre-commissioning	78	32	58.97%	10-Jun-24 A	31-Jan-25	05-Nov-24	06-Dec-24	-56						PFab 2-Line 1 - Pre-commissioning
<b>PFab 2 - Line 2</b>															
		70	32		30-Sep-24 A	31-Jan-25	05-Nov-24	06-Dec-24	-56						
<b>Precommissioning</b>															
06-FGC-2-1020	PFab 2-Line 2 - Pre-commissioning	70	32	54.29%	30-Sep-24 A	31-Jan-25	05-Nov-24	06-Dec-24	-56						PFab 2-Line 2 - Pre-commissioning
<b>PFab 2 - Line 3</b>															
		271	60		27-May-24 A	28-Feb-25	12-Oct-24	24-Dec-24	-66						
<b>E&amp;I Installation</b>															
		238	32		27-May-24 A	31-Jan-25	12-Oct-24	12-Nov-24	-80						
<b>Electrical</b>															
06-FGC-3-1250	PFab 2-Line 3 - Electrical Cable Pulling and Termination	180	32	82.22%	27-May-24 A	31-Jan-25	12-Oct-24	12-Nov-24	-80						PFab 2-Line 3 - Electrical Cable Pulling and Termination
06-FGC-3-1260	PFab 2-Line 3 - Electrical Equipment Installation	180	32	82.22%	03-Jun-24 A	31-Jan-25	12-Oct-24	12-Nov-24	-80						PFab 2-Line 3 - Electrical Equipment Installation
<b>Instrument</b>															
06-FGC-3-1280	PFab 2-Line 3 - Instrument Cable Pulling and Termination	212	32	82.22%	27-May-24 A	31-Jan-25	12-Oct-24	12-Nov-24	-80						PFab 2-Line 3 - Instrument Cable Pulling and Termination

Activity ID	Activity Name	Original Duration	Remaining Duration	Activity % Complete	Current Start	Current Finish	Late Start	Late Finish	Total Float	M85 Remarks	2024				
											Dec 85	Jan 86	Feb 87	Mar 88	
06-FGC-3-1290	PFab 2-Line 3 - Instrument Equipment Installation	180	32	82.22%	03-Jun-24 A	31-Jan-25	12-Oct-24	12-Nov-24	-80						
06-FGC-3-1300	PFab 2-Line 3 - Instrument Tubing Installation	180	32	82.22%	03-Jun-24 A	31-Jan-25	12-Oct-24	12-Nov-24	-80						
<b>Insulation</b>															
06-FGC-3-1170	PFab 2-Line 3 - Insulation	60	31	48.33%	15-Jun-24 A	30-Jan-25	24-Nov-24	24-Dec-24	-37						
<b>Precommissioning</b>															
06-FGC-3-1180	PFab 2-Line 3 - Pre-commissioning	53	53	0%	07-Jan-25	28-Feb-25	02-Nov-24	24-Dec-24	-66						
<b>PFab 2 - Line 4</b>															
<b>E&amp;I Installation</b>															
<b>Electrical</b>															
06-FGC-4-1250	PFab 2-Line 4 - Electrical Cable Pulling and Termination	180	32	82.22%	03-Jun-24 A	31-Jan-25	12-Oct-24	12-Nov-24	-80						
06-FGC-4-1260	PFab 2-Line 4 - Electrical Equipment Installation	180	32	82.22%	03-Jun-24 A	31-Jan-25	12-Oct-24	12-Nov-24	-80						
<b>Instrument</b>															
06-FGC-4-1280	PFab 2-Line 4 - Instrument Cable Pulling and Termination	180	32	82.22%	03-Jun-24 A	31-Jan-25	12-Oct-24	12-Nov-24	-80						
06-FGC-4-1290	PFab 2-Line 4 - Instrument Equipment Installation	180	32	82.22%	03-Jun-24 A	31-Jan-25	12-Oct-24	12-Nov-24	-80						
06-FGC-4-1300	PFab 2-Line 4 - Instrument Tubing Installation	180	32	82.22%	03-Jun-24 A	31-Jan-25	12-Oct-24	12-Nov-24	-80						
<b>Insulation</b>															
06-FGC-4-1010	PFab 2-Line 4 - Insulation	90	31	65.56%	15-Jun-24 A	30-Jan-25	24-Nov-24	24-Dec-24	-37						
<b>Precommissioning</b>															
06-FGC-4-1020	PFab 2-Line 4 - Pre-commissioning	53	53	0%	07-Jan-25	28-Feb-25	02-Nov-24	24-Dec-24	-66						
<b>PFab 2 - Line 5</b>															
<b>E&amp;I Installation</b>															
<b>Electrical</b>															
06-FGC-5-1250	PFab 2-Line 5 - Electrical Cable Pulling and Termination	180	60	66.67%	01-Aug-24 A	28-Feb-25	15-Oct-24	13-Dec-24	-77						
06-FGC-5-1260	PFab 2-Line 5 - Electrical Equipment Installation	180	60	66.67%	01-Aug-24 A	28-Feb-25	15-Oct-24	13-Dec-24	-77						
<b>Instrument</b>															
06-FGC-5-1280	PFab 2-Line 5 - Instrument Cable Pulling and Termination	180	60	66.67%	01-Aug-24 A	28-Feb-25	15-Oct-24	13-Dec-24	-77						
06-FGC-5-1290	PFab 2-Line 5 - Instrument Equipment Installation	180	60	66.67%	01-Aug-24 A	28-Feb-25	15-Oct-24	13-Dec-24	-77						
06-FGC-5-1300	PFab 2-Line 5 - Instrument Tubing Installation	180	60	66.67%	01-Aug-24 A	28-Feb-25	15-Oct-24	13-Dec-24	-77						
<b>Insulation</b>															
06-FGC-5-1200	PFab 2-Line 5 - Insulation	736	60	91.85%	30-Jun-22 A	28-Feb-25	15-Oct-24	13-Dec-24	-77						
<b>Precommissioning</b>															
06-FGC-5-1210	PFab 2-Line 5 - Pre-commissioning	30	30	0%	13-Feb-25	14-Mar-25	28-Nov-24	27-Dec-24	-77						
<b>PFab 2 - Line 6</b>															
<b>E&amp;I Installation</b>															
<b>Electrical</b>															
06-FGC-6-1260	PFab 2-Line 6 - Electrical Cable Pulling and Termination	180	60	66.67%	01-Aug-24 A	28-Feb-25	15-Oct-24	13-Dec-24	-77						
06-FGC-6-1270	PFab 2-Line 6 - Electrical Equipment Installation	180	60	66.67%	01-Aug-24 A	28-Feb-25	15-Oct-24	13-Dec-24	-77						
<b>Instrument</b>															
06-FGC-6-1290	PFab 2-Line 6 - Instrument Cable Pulling and Termination	180	60	66.67%	01-Aug-24 A	28-Feb-25	15-Oct-24	13-Dec-24	-77						
06-FGC-6-1300	PFab 2-Line 6 - Instrument Equipment Installation	180	60	66.67%	01-Aug-24 A	28-Feb-25	15-Oct-24	13-Dec-24	-77						
06-FGC-6-1310	PFab 2-Line 6 - Instrument Tubing Installation	180	60	66.67%	01-Aug-24 A	28-Feb-25	15-Oct-24	13-Dec-24	-77						
<b>Insulation</b>															
06-FGC-6-1020	PFab 2-Line 6 - Insulation	90	60	63.74%	23-Jun-24 A	28-Feb-25	15-Oct-24	13-Dec-24	-77						
<b>Precommissioning</b>															
06-FGC-6-1030	PFab 2-Line 6 - Pre-commissioning	13	13	0%	02-Mar-25	14-Mar-25	15-Dec-24	27-Dec-24	-77	Update Original Duration from 30d to 13d					
<b>Procurement for ACC Units</b>															
06-1150	Factory Acceptance Test (FAT) for ACC-3	16	16	70%	30-Mar-24 A	15-Jan-25	04-Aug-24	19-Aug-24	-149						
06-1190	Delivery to Site ACC-3	13	13	0%	19-Jan-25	31-Jan-25	23-Aug-24	04-Sep-24	-149	Update Original Duration from 44d to 13d					
<b>Procurement for Mechanical Treatment Plant Building Plant Equipment</b>															
06-1180	Delivery to Site	61	37	39.34%	01-May-24 A	05-Feb-25	28-Aug-24	03-Oct-24	-125						
<b>Procurement for Wastewater Treatment Plant Equipment</b>															
06-1220	Delivery to Site	90	16	82.22%	15-Jan-24 A	15-Jan-25	29-Oct-24	14-Nov-24	-63						
<b>Procurement for HV Transformers and Associated Equipment</b>															
<b>Procurement of IS Limiter</b>															
06-1270(7)	IS Limiter Design Approval (2.8.15.06.27)	120	24	80%	26-Sep-22 A	23-Jan-25	06-Aug-24	29-Aug-24	-147						
06-1280(7)	Manufacturing of IS Limiter	87	87	0%	24-Jan-25	20-Apr-25	30-Aug-24	24-Nov-24	-147	Update Duration from 118d to 87d					
<b>Procurement for Onshore Crane at Berth</b>															
06-1360	Material & Equipment Procurement	180	11	93.89%	01-Apr-24 A	10-Jan-25	11-Oct-24	21-Oct-24	-81						
06-1370	Factory Acceptance Test (FAT)	30	30	0%	11-Jan-25	09-Feb-25	22-Oct-24	20-Nov-24	-81						
06-1380	Delivery to Site	14	14	0%	10-Feb-25	23-Feb-25	21-Nov-24	04-Dec-24	-81						
<b>Procurement for Soft Landscape Materials</b>															
06-1790	Material Submission and Approval	60	60	0%	31-Dec-24	28-Feb-25	30-Jul-24	27-Sep-24	-154						
06-1800	Material Procurement & Nursery	170	170	0%	01-Mar-25	17-Aug-25	28-Sep-24	16-Mar-25	-154	Update Original Duration from 200d to 170d					
<b>Procurement for Weighbridge System</b>															
06-2240(1)	Delivery to Site (EIAC Equipment)	40	16	60%	29-Oct-24 A	15-Jan-25	13-Dec-24	28-Dec-24	-18						
<b>Procurement for Truck Wash System</b>															
06-2290(1)	Material Submission and Approval	60	60	0%	31-Dec-24	28-Feb-25	19-Sep-24	17-Nov-24	-103						
06-2300(1)	Material & Equipment Procurement	45	45	0%	01-Mar-25	14-Apr-25	18-Nov-24	01-Jan-25	-103						
06-2310(1)	Factory Acceptance Test (FAT)	45	45	0%	01-Mar-25	14-Apr-25	18-Nov-24	01-Jan-25	-103						
<b>Procurement for Hard Landscape Materials (Paving, Greening, Furniture and Lighting)</b>															
06-7000(6)	Material Submission and Approval	60	60	0%	20-Sep-23 A	28-Feb-25	07-Oct-24	05-Dec-24	-85	Update Actual Start Date					
06-7010(6)	Material Procurement	60	60	0%	01-Mar-25	29-Apr-25	06-Dec-24	03-Feb-25	-85						
<b>Procurement for Curtain Wall Materials</b>															
06-8200(6D)	Material Submission and Approval	60	18	70%	30-Apr-24 A	17-Jan-25	13-Oct-24	31-Oct-24	-78						
06-8210(6D)	Material & Equipment Procurement	90	56	37.78%	18-Oct-24 A	24-Feb-25	13-Oct-24	08-Dec-24	-78						

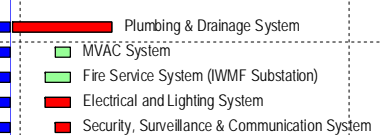
Activity ID	Activity Name	Original Duration	Remaining Duration	Activity % Complete	Current Start	Current Finish	Late Start	Late Finish	Total Float	M&S Remarks	2024			
											Dec 85	Jan 86	Feb 87	Mar 88
06-8220(6D)	Factory Acceptance Test (FAT)	90	90	0%	31-Dec-24	30-Mar-25	13-Oct-24	11-Jan-25	-78					
06-8230(6D)	Delivery to Site	90	90	0%	30-Jan-25	29-Apr-25	12-Nov-24	10-Feb-25	-78					
<b>Off-site Precasting of Facade Panels</b>		<b>769</b>	<b>97</b>		<b>14-Feb-23 A</b>	<b>06-Apr-25</b>	<b>21-Oct-24</b>	<b>07-Mar-25</b>	<b>-30</b>					
06-8040(6D)	Procurement of Precast Concrete Wall Panel Moulding & Fabrication	205	46	77.56%	14-Feb-23 A	14-Feb-25	21-Oct-24	06-Dec-24	-70					Procurement of Precast Concrete Wall Panel Moulding & Fabrication
<b>Turbine Hall</b>		<b>30</b>	<b>8</b>		<b>08-Nov-24 A</b>	<b>07-Jan-25</b>	<b>04-Jan-25</b>	<b>11-Jan-25</b>	<b>4</b>					
06-8150	Delivery to Site	30	8	73.33%	08-Nov-24 A	07-Jan-25	04-Jan-25	11-Jan-25	4					Delivery to Site
<b>Process Building</b>		<b>90</b>	<b>50</b>		<b>21-Oct-24 A</b>	<b>18-Feb-25</b>	<b>21-Oct-24</b>	<b>10-Dec-24</b>	<b>-70</b>					
06-8160	Precasting of Concrete Panels	60	18	70%	21-Oct-24 A	17-Jan-25	21-Oct-24	08-Nov-24	-70					Precasting of Concrete Panels
06-8170	Factory Acceptance Test (FAT)	60	35	41.67%	05-Nov-24 A	03-Feb-25	21-Oct-24	25-Nov-24	-70					Factory Acceptance Test (FAT)
06-8180	Delivery to Site	60	50	16.67%	20-Nov-24 A	18-Feb-25	21-Oct-24	10-Dec-24	-70					Delivery to Site
<b>Mechanical Treatment Plant</b>		<b>60</b>	<b>60</b>		<b>31-Dec-24</b>	<b>28-Feb-25</b>	<b>26-Oct-24</b>	<b>24-Dec-24</b>	<b>-66</b>					
06-8190	Precasting of Concrete Panels	37	37	0%	31-Dec-24	05-Feb-25	26-Oct-24	01-Dec-24	-66					Precasting of Concrete Panels
06-8200	Factory Acceptance Test (FAT)	30	30	0%	15-Jan-25	13-Feb-25	10-Nov-24	09-Dec-24	-66					Factory Acceptance Test (FAT)
06-8210	Delivery to Site	30	30	0%	30-Jan-25	28-Feb-25	25-Nov-24	24-Dec-24	-66					Delivery to Site
<b>Water Treatment Plant</b>		<b>45</b>	<b>45</b>		<b>31-Dec-24</b>	<b>13-Feb-25</b>	<b>10-Nov-24</b>	<b>24-Dec-24</b>	<b>-51</b>					
06-8310(M82)	Precasting of Concrete Panels	37	37	0%	31-Dec-24	05-Feb-25	10-Nov-24	16-Dec-24	-51					Precasting of Concrete Panels
06-8320(M82)	Factory Acceptance Test (FAT)	30	30	0%	15-Jan-25	13-Feb-25	25-Nov-24	24-Dec-24	-51					Factory Acceptance Test (FAT)
06-8330(M82)	Delivery to Site	30	30	0%	15-Jan-25	13-Feb-25	25-Nov-24	24-Dec-24	-51					Delivery to Site
<b>Administration Building</b>		<b>35</b>	<b>35</b>		<b>15-Feb-25</b>	<b>21-Mar-25</b>	<b>10-Jan-25</b>	<b>13-Feb-25</b>	<b>-36</b>					
06-8250	Precasting of Concrete Panels	21	21	0%	15-Feb-25	07-Mar-25	10-Jan-25	30-Jan-25	-36					Precasting of Concrete Panels
06-8260	Factory Acceptance Test (FAT)	21	21	0%	22-Feb-25	14-Mar-25	17-Jan-25	06-Feb-25	-36					Factory Acceptance Test (FAT)
06-8270	Delivery to Site	14	14	0%	08-Mar-25	21-Mar-25	31-Jan-25	13-Feb-25	-36					Delivery to Site
<b>Chimney</b>		<b>97</b>	<b>97</b>		<b>31-Dec-24</b>	<b>06-Apr-25</b>	<b>30-Nov-24</b>	<b>07-Mar-25</b>	<b>-30</b>					
06-8280	Steel Claddings Fabrication	67	67	0%	31-Dec-24	07-Mar-25	30-Nov-24	05-Feb-25	-30					Steel Claddings Fabrication
06-8290	Factory Acceptance Test (FAT)	60	60	0%	06-Feb-25	06-Apr-25	06-Jan-25	07-Mar-25	-30					Factory Acceptance Test (FAT)
<b>Environmental Works</b>		<b>365</b>	<b>154</b>		<b>01-Feb-24 A</b>	<b>02-Jun-25</b>	<b>24-Sep-24</b>	<b>24-Feb-25</b>	<b>-98</b>					
<b>Baseline Air Quality Monitoring Works</b>		<b>365</b>	<b>154</b>		<b>01-Feb-24 A</b>	<b>02-Jun-25</b>	<b>24-Sep-24</b>	<b>24-Feb-25</b>	<b>-98</b>					
07-1220	Carry out baseline Air Quality monitoring at Portion 3 (Alternative Location)	365	154	57.81%	01-Feb-24 A	02-Jun-25	24-Sep-24	24-Feb-25	-98					
07-1240	Carry out baseline Air Quality monitoring at Portion 5	365	154	57.81%	01-Feb-24 A	02-Jun-25	24-Sep-24	24-Feb-25	-98					
<b>Maritime Works</b>		<b>2019</b>	<b>161</b>		<b>30-Nov-19 A</b>	<b>09-Jun-25</b>	<b>14-Sep-24</b>	<b>27-Aug-25</b>	<b>79</b>					
<b>Marine Construction</b>		<b>2019</b>	<b>161</b>		<b>30-Nov-19 A</b>	<b>09-Jun-25</b>	<b>14-Sep-24</b>	<b>27-Aug-25</b>	<b>79</b>					
<b>Phase I - Construction of Perimeter Seawalls</b>		<b>2019</b>	<b>161</b>		<b>30-Nov-19 A</b>	<b>09-Jun-25</b>	<b>14-Sep-24</b>	<b>27-Aug-25</b>	<b>79</b>					
<b>Seawall and Berth at DCM Area</b>		<b>2019</b>	<b>161</b>		<b>30-Nov-19 A</b>	<b>09-Jun-25</b>	<b>14-Sep-24</b>	<b>11-Mar-25</b>	<b>-90</b>					
<b>Seawall Structural Works</b>		<b>2019</b>	<b>161</b>		<b>30-Nov-19 A</b>	<b>09-Jun-25</b>	<b>14-Sep-24</b>	<b>11-Mar-25</b>	<b>-90</b>					
08-1115(3)	Caisson infill, Solid ballast, toe protection, precast concrete blocks ...etc Laying	250	8	96.68%	30-Nov-19 A	08-Jan-25	03-Nov-24	11-Nov-24	-57					Caisson infill, Solid ballast, toe protection, precast concrete blocks ...etc Laying
<b>Remain Works</b>		<b>1339</b>	<b>161</b>		<b>10-Oct-21 A</b>	<b>09-Jun-25</b>	<b>14-Sep-24</b>	<b>11-Mar-25</b>	<b>-90</b>					
08-1120	Construction of Seawall and Wave Wall Extension from +3mPD to Deck Level for Seawall A	220	12	94.55%	10-Oct-21 A	11-Jan-25	31-Oct-24	11-Nov-24	-61					Construction of Seawall and Wave Wall Extension from +3mPD to Deck Level for Seawall A
08-1120-1(6)	Construction of Seawall and Wave Wall Extension from +3mPD to Deck Level for Seawall B	220	4	98.31%	10-Oct-21 A	03-Jan-25	02-Oct-24	05-Oct-24	-90					Construction of Seawall and Wave Wall Extension from +3mPD to Deck Level for Seawall B
08-1120-2(M55)	Construction of Seawall and Wave Wall Extension from +3mPD to Deck Level for Seawall B No. C1 & C2 (Caisson A2 & A3)	60	17	71.75%	28-Jun-23 A	16-Jan-25	19-Sep-24	05-Oct-24	-103					Construction of Seawall and Wave Wall Extension from +3mPD to Deck Level for Seawall B No. C1 & C2 (Caisson A2 & A3)
08-1120-4(M55)	Construction of Seawall and Wave Wall Extension from +3mPD to Deck Level for Seawall B No. C73 & C734	60	20	66.51%	01-Dec-23 A	20-Jan-25	14-Sep-24	04-Oct-24	-108					Construction of Seawall and Wave Wall Extension from +3mPD to Deck Level for Seawall B No. C73 & C734
08-1320(6)	Construction of Rear Wall Buttress & Panel for Seawall A	150	150	0%	10-Jan-25	09-Jun-25	13-Oct-24	11-Mar-25	-90					
<b>Seawall at Dredging Area</b>		<b>160</b>	<b>7</b>		<b>20-Jan-23 A</b>	<b>07-Jan-25</b>	<b>20-Aug-25</b>	<b>27-Aug-25</b>	<b>233</b>					
<b>Remain Works</b>		<b>160</b>	<b>7</b>		<b>20-Jan-23 A</b>	<b>07-Jan-25</b>	<b>20-Aug-25</b>	<b>27-Aug-25</b>	<b>233</b>					
08-1170	Construction of Seawall and Wave Wall Extension from +3mPD to Deck Level (Bay 1 to Bay 8)	160	7	95.5%	20-Jan-23 A	07-Jan-25	20-Aug-25	27-Aug-25	233					Construction of Seawall and Wave Wall Extension from +3mPD to Deck Level (Bay 1 to Bay 8)
<b>Phase II - Reclamation, Breakwater and Berth Construction</b>		<b>314</b>	<b>161</b>		<b>10-May-24 A</b>	<b>09-Jun-25</b>	<b>19-Oct-24</b>	<b>27-Aug-25</b>	<b>79</b>					
<b>Breakwater</b>		<b>120</b>	<b>120</b>		<b>09-Feb-25</b>	<b>09-Jun-25</b>	<b>30-Apr-25</b>	<b>27-Aug-25</b>	<b>79</b>					
<b>Remain Works</b>		<b>120</b>	<b>120</b>		<b>09-Feb-25</b>	<b>09-Jun-25</b>	<b>30-Apr-25</b>	<b>27-Aug-25</b>	<b>79</b>					
08-1310(7)	Breakwater Profile Barrier and Pavement Road	120	120	0%	09-Feb-25	09-Jun-25	30-Apr-25	27-Aug-25	79					
<b>Seawall and Berth at Marine Access</b>		<b>260</b>	<b>107</b>		<b>10-May-24 A</b>	<b>16-Apr-25</b>	<b>19-Oct-24</b>	<b>26-Jan-25</b>	<b>-80</b>					
<b>Remain Works</b>		<b>30</b>	<b>24</b>		<b>10-May-24 A</b>	<b>23-Jan-25</b>	<b>19-Oct-24</b>	<b>11-Nov-24</b>	<b>-73</b>					
08-1330(2)	Construction of Seawall and Wave Wall Extension from +3mPD to Deck Level	30	24	20%	10-May-24 A	23-Jan-25	19-Oct-24	11-Nov-24	-73					Construction of Seawall and Wave Wall Extension from +3mPD to Deck Level
<b>Fire Boat Access</b>		<b>90</b>	<b>90</b>		<b>16-Jan-25</b>	<b>16-Apr-25</b>	<b>28-Oct-24</b>	<b>26-Jan-25</b>	<b>-80</b>					
08-2500(6D)	Construction of Fire Boat Access	90	90	0%	16-Jan-25	16-Apr-25	28-Oct-24	26-Jan-25	-80					
<b>Foundation Works</b>		<b>551</b>	<b>66</b>		<b>05-Aug-23 A</b>	<b>06-Mar-25</b>	<b>12-Aug-24</b>	<b>10-Feb-25</b>	<b>-24</b>					
<b>Sky Deck Foundation</b>		<b>82</b>	<b>28</b>		<b>23-Jun-24 A</b>	<b>28-Jan-25</b>	<b>12-Aug-24</b>	<b>09-Sep-24</b>	<b>-140</b>					
<b>Sky Deck Pile Caps Construction</b>		<b>82</b>	<b>28</b>		<b>23-Jun-24 A</b>	<b>28-Jan-25</b>	<b>12-Aug-24</b>	<b>09-Sep-24</b>	<b>-140</b>					
09-2730(M62)	Excavation to Pile Cap Formation	21	14	32%	23-Jun-24 A	14-Jan-25	12-Aug-24	26-Aug-24	-140					Excavation to Pile Cap Formation
09-2740(M62)	Pile Cut-off & Capping Plate (2 Welders @ 2nr/d)	21	12	41%	03-Jul-24 A	21-Jan-25	21-Aug-24	02-Sep-24	-140					Pile Cut-off & Capping Plate (2 Welders @ 2nr/d)
09-2750(M62)	Pile Caps Construction	30	23	25%	27-Aug-24 A	28-Jan-25	18-Aug-24	09-Sep-24	-140					Pile Caps Construction
<b>Process Building - Waste Bunker &amp; Tipping Hall Bld Foundation</b>		<b>26</b>	<b>2</b>		<b>05-Aug-23 A</b>	<b>02-Jan-25</b>	<b>01-Oct-24</b>	<b>03-Oct-24</b>	<b>-91</b>					
<b>Process Building Pile Cap Construction</b>		<b>26</b>	<b>2</b>		<b>05-Aug-23 A</b>	<b>02-Jan-25</b>	<b>01-Oct-24</b>	<b>03-Oct-24</b>	<b>-91</b>					
<b>Pile Cap Stage 3 (Module 3 Between Grid PB22 to PB32)</b>		<b>26</b>	<b>2</b>		<b>05-Aug-23 A</b>	<b>02-Jan-25</b>	<b>01-Oct-24</b>	<b>03-Oct-24</b>	<b>-91</b>					
<b>Process Building (Module 3) WWTP</b>		<b>26</b>	<b>2</b>		<b>05-Aug-23 A</b>	<b>02-Jan-25</b>	<b>01-Oct-24</b>	<b>03-Oct-24</b>	<b>-91</b>					
09-1260	Pile Caps and Raft Foundation Construction (60m x 24m 4set@100m2/7day)	26	2	92.12%	05-Aug-23 A	02-Jan-25	01-Oct-24	03-Oct-24	-91					Pile Caps and Raft Foundation Construction (60m x 24m 4set@100m2/7day)
<b>ACC Equipment Foundation</b>		<b>22</b>	<b>22</b>		<b>31-Dec-24</b>	<b>21-Jan-25</b>	<b>28-Sep-24</b>	<b>19-Oct-24</b>	<b>-94</b>					
<b>ACC Pile Cap Construction</b>		<b>22</b>	<b>22</b>		<b>31-Dec-24</b>	<b>21-Jan-25</b>	<b>28-Sep-24</b>	<b>19-Oct-24</b>	<b>-94</b>					
09-1720-1(M58)	On-grade Slab Construction Grid ACA-ACG, AC3-AC4	22	22	0%	31-Dec-24	21-Jan-25	28-Sep-24	19-Oct-24	-94					On-grade Slab Construction Grid ACA-ACG, AC3-AC4
<b>Reception Pavilion Foundation</b>		<b>30</b>	<b>30</b>		<b>20-Jan-25</b>	<b>19-Feb-25</b>	<b>12-Oct-24</b>	<b>10-Nov-24</b>	<b>-100</b>					
09-2100	Formation, Compaction & Raft Foundation Construction	30	30	0%	20-Jan-25	19-Feb-25	12-Oct-24	10-Nov-24	-100					Formation, Compaction & Raft Foundation Construction
<b>Weighbridge Foundation</b>		<b>21</b>	<b>21</b>		<b>14-Feb-25</b>	<b>06-Mar-25</b>	<b>08-Dec-24</b>	<b>28-Dec-24</b>	<b>-68</b>					
09-2710(6F)	Excavation & Construction of Weighbridge Bays and Cast-in bolts	21	21	0%	14-Feb-25	06-Mar-25	08-Dec-24	28-Dec-24	-68					Excavation & Construction of Weighbridge

Activity ID	Activity Name	Original Duration	Remaining Duration	Activity % Complete	Current Start	Current Finish	Late Start	Late Finish	Total Float	M85 Remarks	2024			
											Dec 85	Jan 86	Feb 87	Mar 88
<b>External Water Tank Foundations</b>														
09-3050	Reuse Water Tanks and Water Cannon Water Tank Foundation (approx. 390m3)	21	15	30%	07-Dec-24 A	14-Jan-25	27-Jan-25	10-Feb-25	27	Change Relationship from Predecessor from FSO to FFO	Reuse Water Tanks and Water Cannon Water Tank Foundation (approx. 390m3)			
<b>Superstructure Works</b>														
<b>Administration &amp; Viewing Gallery Bld Structure</b>														
10-1070	Roof Parapet and Dog House	21	21	0%	31-Dec-24	20-Jan-25	22-Nov-24	12-Dec-24	-39		Roof Parapet and Dog House			
10-1080(M63)	Facade Structural Frame Installation	65	65	0%	31-Dec-24	05-Mar-25	01-Dec-24	03-Feb-25	-30		Facade Structural Frame Installation			
<b>Sky Deck Structure</b>														
10-2310 (M55)	Construction of RC Column (16nr, 0.9m Dia x 11m, 3 pours @ 5d/pour with 4 formwork sets)	60	60	0%	13-Jan-25	14-Mar-25	26-Aug-24	24-Oct-24	-140		Construction of RC Column			
10-2315 (7)	Beam & Slab to Deck Level app.+18mPD (approx. 600m3)	30	30	0%	05-Mar-25	04-Apr-25	16-Oct-24	14-Nov-24	-140					
<b>Process Building - Waste Bunker &amp; Tipping Hall Bld Structure</b>														
<b>Waste &amp; Ash Bunker Bld Structure</b>														
<b>Process Building (Module 3) Waste &amp; Ash Bunker Bld Structure</b>														
10-1410	Column & Wall to +53.7mPD	21	6	70%	06-Nov-24 A	06-Jan-25	23-Aug-24	29-Aug-24	-129		Column & Wall to +53.7mPD			
<b>Process Building Waste &amp; Ash Bunker Bld Structural Steel Roof</b>														
10-2080-01(M81)	Module 2 Bunker Steel Roof Erection	40	37	8%	27-Dec-24 A	06-Feb-25	13-Oct-24	18-Nov-24	-80	Update Actual Start Date	Module 2 Bunker Steel Roof Erection			
10-2080-02(M81)	Module 3 Bunker Steel Roof Erection	40	40	0%	06-Feb-25	18-Mar-25	27-Dec-24	04-Feb-25	-42		Module 3 Bunker Steel Roof Erection			
10-2080-03(M85)	Module 1 Bunker Steel Roof Modification Works	30	30	0%	31-Dec-24	29-Jan-25	18-Sep-24	17-Oct-24	-104	New Activity	Module 1 Bunker Steel Roof Modification Works			
10-2220(7)	Module 1 Bunker Roof Cladding Installation	35	21	40%	30-Nov-24 A	19-Feb-25	18-Oct-24	07-Nov-24	-104	Changed remaining dur to 21d	Module 1 Bunker Roof Cladding Installation			
10-2220-1(M81)	Module 2 Bunker Roof Cladding Installation	30	30	0%	20-Feb-25	21-Mar-25	08-Nov-24	07-Dec-24	-104		Module 2 Bunker Roof Cladding Installation			
10-2220-2(M81)	Module 3 Bunker Roof Cladding Installation	30	30	0%	22-Mar-25	20-Apr-25	26-Jan-25	24-Feb-25	-55		Module 3 Bunker Roof Cladding Installation			
<b>Process Building Waste &amp; Ash Bunker Bld Structure Between Bunker 1 and 2</b>														
10-2400 (M78)	Beam & Slab to +27.28mPD	12	1	90%	15-Aug-24 A	01-Jan-25	09-Aug-24	10-Aug-24	-143		Beam & Slab to +27.28mPD			
10-2410 (M78)	Beam & Slab to +11.58mPD and +12.4mPD	11	11	0%	31-Dec-24	10-Jan-25	08-Aug-24	19-Aug-24	-144		Beam & Slab to +11.58mPD and +12.4mPD			
10-2420 (M78)	Beam & Slab to +33.5mPD Grid Line PBA to PBG	9	9	0%	02-Jan-25	10-Jan-25	10-Aug-24	19-Aug-24	-144		Beam & Slab to +33.5mPD Grid Line PBA to PBG			
<b>Process Building Waste &amp; Ash Bunker Bld Structure Between Bunker 2 and 3</b>														
10-2460 (M78)	Beam & Slab to +17.5mPD	14	1	90%	22-Aug-24 A	01-Jan-25	12-Aug-24	13-Aug-24	-141		Beam & Slab to +17.5mPD			
10-2470 (M78)	Beam & Slab to +27.28mPD	12	5	60%	28-Sep-24 A	06-Jan-25	20-Aug-24	25-Aug-24	-134		Beam & Slab to +27.28mPD			
10-2480 (M78)	Beam & Slab to +11.58mPD and +12.4mPD	11	11	0%	11-Jan-25	22-Jan-25	23-Aug-24	03-Sep-24	-141		Beam & Slab to +11.58mPD and +12.4mPD			
10-2490 (M78)	Beam & Slab to +33.5mPD Grid Line PBA to PBG	9	9	0%	13-Jan-25	22-Jan-25	25-Aug-24	03-Sep-24	-141		Beam & Slab to +33.5mPD Grid Line PBA to PBG			
<b>Process Building Waste &amp; Ash Bunker Bld Misc. Steel Structure</b>														
10-2330 (M63)	Facade Structural Frame Installation at Module 1 (East & North Side)	30	26	12.5%	17-Nov-24 A	26-Jan-25	21-Oct-24	16-Nov-24	-70		Facade Structural Frame Installation at Module 1 (East & North Side)			
10-2340 (M63)	Facade Structural Frame Installation at Module 2 (North Side)	20	20	0%	26-Jan-25	15-Feb-25	27-Nov-24	16-Dec-24	-60		Facade Structural Frame Installation at Module 2 (North Side)			
10-2350 (M63)	Facade Structural Frame Installation at Module 3 (North & West Side)	30	30	0%	15-Feb-25	17-Mar-25	22-Dec-24	20-Jan-25	-55		Facade Structural Frame Installation at Module 3 (North & West Side)			
10-2360-1(M81)	Waste Crane Runway Beam at Module 1 (Including Rail Weld Inspection)	35	43	69%	14-Aug-24 A	11-Feb-25	18-Sep-24	30-Oct-24	-104		Waste Crane Runway Beam at Module 1 (Including Rail Weld Inspection)			
10-2360-2(M81)	Waste Crane Runway Beam at Module 2 (Including Rail Weld Inspection)	35	33	15%	19-Nov-24 A	01-Feb-25	13-Oct-24	14-Nov-24	-79		Waste Crane Runway Beam at Module 2 (Including Rail Weld Inspection)			
10-2360-3(M81)	Waste Crane Runway Beam at Module 3 (Including Rail Weld Inspection)	53	53	0%	02-Feb-25	26-Mar-25	27-Dec-24	17-Feb-25	-37		Waste Crane Runway Beam at Module 3 (Including Rail Weld Inspection)			
10-2360-5(M81)	Ash Crane Runway Beam at Module 2 (Including Rail Weld Inspection)	36	36	0%	31-Dec-24	04-Feb-25	20-Oct-24	24-Nov-24	-72		Ash Crane Runway Beam at Module 2 (Including Rail Weld Inspection)			
10-2360-6(M81)	Ash Crane Runway Beam at Module 3 (Including Rail Weld Inspection)	36	36	0%	05-Feb-25	12-Mar-25	25-Nov-24	30-Dec-24	-72		Ash Crane Runway Beam at Module 3 (Including Rail Weld Inspection)			
<b>Process Building - Boiler &amp; Flue Gas Treatment Bld Structure</b>														
<b>Steel Structure</b>														
<b>Boiler Building Steel Structure</b>														
<b>Process Building (Module 2) Steel Structure Erection</b>														
10-1680	Roof Cladding Installation	60	76	56.33%	25-Oct-23 A	16-Mar-25	21-Sep-24	05-Dec-24	-101		Roof Cladding Installation			
<b>Process Building (Module 3) Process Building Steel Structure Erection</b>														
10-1720	Roof Cladding Installation	60	78	54%	12-Dec-23 A	18-Mar-25	19-Sep-24	05-Dec-24	-103		Roof Cladding Installation			
<b>Process Building Internal Partition Wall and Staircase</b>														
10-1850	RC Partition and Staircase at Module 1	90	73	19%	09-Nov-24 A	13-Mar-25	02-Aug-24	13-Oct-24	-151		RC Partition and Staircase at Module 1			
10-1860	RC Partition and Staircase at Module 2	69	69	0%	20-Jan-25*	29-Mar-25	18-Dec-24	24-Feb-25	-33		RC Partition and Staircase at Module 2			
10-1870	RC Partition and Staircase at Module 3	69	69	0%	20-Jan-25*	29-Mar-25	04-Nov-24	11-Jan-25	-77		RC Partition and Staircase at Module 3			
<b>Chimney Structure</b>														
10-2060-1	Chimney Roof Slab (47th Pour)	40	40	0%	12-Feb-25	23-Mar-25	21-Mar-25	29-Apr-25	37		Chimney Roof Slab (47th Pour)			
<b>Mechanical Treatment Plant Bld Structure</b>														
10-2095	Column & Wall to +13.5mPD	21	3	84%	08-May-24 A	03-Jan-25	31-Aug-24	03-Sep-24	-121		Column & Wall to +13.5mPD			
10-2096	1/F Slab @+13.5mPD	21	1	97%	05-Aug-24 A	03-Jan-25	03-Sep-24	03-Sep-24	-121		1/F Slab @+13.5mPD			
10-2100	Column & Wall to +17.5mPD	21	2	90%	25-Aug-24 A	03-Jan-25	01-Sep-24	03-Sep-24	-121		Column & Wall to +17.5mPD			
10-2110	2/F Slab @+17.5mPD	21	4	83%	30-Sep-24 A	03-Jan-25	17-Oct-24	20-Oct-24	-75		2/F Slab @+17.5mPD			
10-2120	Column & Wall to +23.0mPD	21	12	43%	27-Nov-24 A	11-Jan-25	09-Oct-24	20-Oct-24	-83		Column & Wall to +23.0mPD			
10-2130	3/F Slab @+23.0mPD	21	17	21%	04-Dec-24 A	16-Jan-25	04-Oct-24	20-Oct-24	-88	Update Actual Start Date: Change Relationship from Predecessor 10-2120 from FSO to FFO	3/F Slab @+23.0mPD			
10-2140	Column & Wall to +27.28mPD	21	21	0%	16-Jan-25	06-Feb-25	21-Oct-24	10-Nov-24	-88		Column & Wall to +27.28mPD			
10-2150	Roof Slab @+27.28mPD	21	21	0%	06-Feb-25	27-Feb-25	11-Nov-24	01-Dec-24	-88		Roof Slab @+27.28mPD			
10-2160	Roof Parapet Wall	21	21	0%	27-Feb-25	20-Mar-25	04-Dec-24	24-Dec-24	-86		Roof Parapet Wall			
<b>Elevated Drive Way and Associated Structures</b>														
<b>Elevated Drive Way RSA to RSG (FS Control Rm &amp; Vehicle Washing Facility)</b>														
10-2250(M57)	Wall & Column to +17.5 Ramp Level	30	3	90%	12-Oct-24 A	02-Jan-25	10-Sep-24	13-Sep-24	-111		Wall & Column to +17.5 Ramp Level			
10-2260(M57)	Beam & Slab to +17.5 Ramp Level	21	4	80%	15-Nov-24 A	07-Jan-25	13-Sep-24	17-Sep-24	-111		Beam & Slab to +17.5 Ramp Level			
10-2270(M57)	Truck Washing Facility House Column and Roof Slab to +28mPD	90	90	0%	22-Jan-25	22-Apr-25	27-Oct-24	24-Jan-25	-87		Truck Washing Facility House Column and Roof Slab to +28mPD			
10-2300(M57)	Parapet Wall	30	15	50%	14-Dec-24 A	14-Jan-25	14-Jun-25	28-Jun-25	165		Parapet Wall			
<b>Elevated Drive Way RSG to RSX (Transform Room)</b>														
10-2320(M57)	Wall & Column to +12.5mPD Mezzanine Level	21	7	65%	22-Sep-24 A	07-Jan-25	03-Oct-24	10-Oct-24	-88	Remove Actual Finish Date	Wall & Column to +12.5mPD Mezzanine Level			
10-2330(M57)	Beam & Slab to +12.5mPD Mezzanine Level	21	8	60%	13-Oct-24 A	08-Jan-25	03-Oct-24	11-Oct-24	-88		Beam & Slab to +12.5mPD Mezzanine Level			

Activity ID	Activity Name	Original Duration	Remaining Duration	Activity % Complete	Current Start	Current Finish	Late Start	Late Finish	Total Float	M&S Remarks	2024				2025				
											Dec 85	Jan 86	Feb 87	Mar 88	Jan 86	Feb 87	Mar 88	Apr 89	
10-2340(M57)	Wall & Column to +17.5 Ramp Level	21	15	30%	19-Nov-24 A	14-Jan-25	27-Sep-24	11-Oct-24	-95										
10-2350(M57)	Beam & Slab to +17.5 Ramp Level	21	15	30%	21-Nov-24 A	14-Jan-25	27-Sep-24	11-Oct-24	-95										
<b>Elevated Drive Way RSX to RSAB</b>		<b>56</b>	<b>56</b>		<b>31-Dec-24</b>	<b>24-Feb-25</b>	<b>06-Oct-24</b>	<b>30-Nov-24</b>	<b>-86</b>										
10-2420(M81)	Wall & Column to +12.5mPD Mezzanine Level	14	14	0%	31-Dec-24	13-Jan-25	06-Oct-24	19-Oct-24	-86										
10-2430(M81)	Beam & Slab to +12.5mPD Mezzanine Level	14	14	0%	14-Jan-25	27-Jan-25	20-Oct-24	02-Nov-24	-86										
10-2440(M81)	Wall & Column to +17.5 Ramp Level	14	14	0%	28-Jan-25	10-Feb-25	03-Nov-24	16-Nov-24	-86										
10-2450(M81)	Beam & Slab to +17.5 Ramp Level	14	14	0%	11-Feb-25	24-Feb-25	17-Nov-24	30-Nov-24	-86										
<b>Elevated Drive Way RSAB to RSAF</b>		<b>112</b>	<b>30</b>		<b>15-Apr-24 A</b>	<b>29-Jan-25</b>	<b>03-Oct-24</b>	<b>09-Nov-24</b>	<b>-81</b>										
10-2360(M57)	G/F Base Slab	45	5	90%	15-Apr-24 A	04-Jan-25	03-Oct-24	08-Oct-24	-88										
10-2370(M57)	Wall & Column to +13mPD Mezzanine Level	45	6	86.67%	20-Apr-24 A	05-Jan-25	04-Nov-24	09-Nov-24	-57										
10-2380(M57)	Beam & Slab to +13mPD Mezzanine Level	30	21	30%	10-May-24 A	20-Jan-25	20-Oct-24	09-Nov-24	-72										
10-2390(M57)	Wall & Column to +17.5 Ramp Level	30	21	30%	17-May-24 A	20-Jan-25	20-Oct-24	09-Nov-24	-72										
10-2400(M57)	Beam & Slab to +17.5 Ramp Level	30	30	0%	20-May-24 A	29-Jan-25	11-Oct-24	09-Nov-24	-81										
<b>Reception Pavilion Structure</b>		<b>63</b>	<b>63</b>		<b>19-Feb-25</b>	<b>23-Apr-25</b>	<b>11-Nov-24</b>	<b>12-Jan-25</b>	<b>-100</b>										
10-2280	Reception Pavilion RC Structure Construction	30	30	0%	19-Feb-25	21-Mar-25	11-Nov-24	10-Dec-24	-100										
10-2290	Roof	30	30	0%	24-Mar-25	23-Apr-25	14-Dec-24	12-Jan-25	-100										
<b>Vehicle Fuel Filling Station</b>		<b>30</b>	<b>30</b>		<b>24-Jan-25</b>	<b>22-Feb-25</b>	<b>10-Oct-24</b>	<b>08-Nov-24</b>	<b>-106</b>										
10-2450(6D)	Filling Station Structure Construction	30	30	0%	24-Jan-25	22-Feb-25	10-Oct-24	08-Nov-24	-106	Changed relation with successor 03-3860 to FS+0d									
<b>Vessel Offloading Point</b>		<b>74</b>	<b>74</b>		<b>20-Jan-25</b>	<b>03-Apr-25</b>	<b>04-Oct-24</b>	<b>16-Dec-24</b>	<b>-108</b>										
08-2420(7)	Vehicle Ferry Ramp Installation	74	74	0%	20-Jan-25	03-Apr-25	04-Oct-24	16-Dec-24	-108										
<b>Weighbridge Kiosk</b>		<b>30</b>	<b>30</b>		<b>15-Jan-25</b>	<b>13-Feb-25</b>	<b>29-Oct-24</b>	<b>27-Nov-24</b>	<b>-78</b>										
08-2430(M79)	Construction of Weighbridge Kiosk	30	30	0%	15-Jan-25*	13-Feb-25	29-Oct-24	27-Nov-24	-78										
<b>ACC Yard</b>		<b>321</b>	<b>107</b>		<b>31-Mar-24 A</b>	<b>16-Apr-25</b>	<b>21-Aug-24</b>	<b>18-Nov-24</b>	<b>-149</b>										
13-2000	Delivery and Erection of ACC Steel Structure & Steel Structure Support of Condensate Tank (Module 1)	90	15	83.33%	31-Mar-24 A	14-Jan-25	21-Aug-24	04-Sep-24	-132										
13-2040	Delivery and Erection of ACC Steel Structure & Steel Structure Support of Condensate Tank (Module 2)	90	86	5%	24-Oct-24 A	26-Mar-25	21-Aug-24	14-Nov-24	-132										
13-2080	Delivery and Erection of ACC Steel Structure & Steel Structure Support of Condensate Tank (Module 3)	90	90	0%	17-Jan-25	16-Apr-25	21-Aug-24	18-Nov-24	-149										
<b>Misc. External Structures</b>		<b>76</b>	<b>60</b>		<b>15-Nov-24 A</b>	<b>28-Feb-25</b>	<b>06-Oct-24</b>	<b>27-Mar-25</b>	<b>27</b>										
10-2440	Water Cannon Water Tank Erection & pipe connection to Pump Room	45	45	0%	14-Jan-25	28-Feb-25	11-Feb-25	27-Mar-25	27										
10-2450	Seawater Intake Structure RC Works above +6.5mPD	30	26	13.33%	15-Nov-24 A	25-Jan-25	06-Oct-24	31-Oct-24	-86										
10-2460	Seawater Intake Structure Steel Roof Erection	30	30	0%	26-Jan-25	24-Feb-25	14-Nov-24	13-Dec-24	-73										
<b>Architectural Builders Works &amp; Finishes</b>		<b>522</b>	<b>244</b>		<b>27-Sep-23 A</b>	<b>31-Aug-25</b>	<b>30-Jul-24</b>	<b>28-Jun-25</b>	<b>-64</b>										
<b>Administration &amp; Viewing Gallery Bld ABWF Works</b>		<b>186</b>	<b>186</b>		<b>30-Jan-25</b>	<b>03-Aug-25</b>	<b>31-Dec-24</b>	<b>28-Jun-25</b>	<b>-36</b>										
11-1020	Metal Railings, Platforms and Misc. Metal Works Installations	150	150	0%	07-Mar-25	03-Aug-25	30-Jan-25	28-Jun-25	-36										
11-1030	Internal Wall and Floor Finishes	150	150	0%	30-Jan-25	28-Jun-25	31-Dec-24	29-May-25	-30										
11-1050-1(M63)	Facade Panels Erection (130pcs. @4pc/day)	33	33	0%	22-Mar-25	23-Apr-25	14-Feb-25	18-Mar-25	-36										
<b>Process Building - Waste Bunker &amp; Tipping Hall Bld ABWF Works</b>		<b>455</b>	<b>178</b>		<b>20-Nov-23 A</b>	<b>27-Jun-25</b>	<b>14-Sep-24</b>	<b>09-Jun-25</b>	<b>-17</b>										
11-1060	Door, Roller Shutter, Windows and Louvers Installation	180	178	1%	02-Nov-24 A	27-Jun-25	13-Dec-24	09-Jun-25	-17										
11-1070	Metal Railings, Platforms, Gratings, Cable trench covers Installations	90	90	0%	31-Dec-24	30-Mar-25	12-Mar-25	09-Jun-25	71										
11-1080	Internal Wall and Floor Finishes	230	164	28.7%	20-Nov-23 A	12-Jun-25	14-Sep-24	24-Feb-25	-108										
11-1090	False ceiling and Raise Floor installation (in CCR)	45	23	50%	17-Dec-24 A	22-Jan-25	24-Sep-24	16-Oct-24	-98	Update Actual Start Date									
11-1100	External Finishes, Curtain Walls and Roof Waterproofing	90	26	71%	20-Feb-24 A	26-Jan-25	10-Nov-24	06-Dec-24	-50										
11-1530(M63)	Facade Panels Erection for Module 1 (612pcs. @8pcs/d)	51	50	1%	27-Nov-24 A	19-Feb-25	21-Oct-24	10-Dec-24	-70										
11-1540(M63)	Facade Panels Erection for Module 2 (284pcs. @8pcs/d)	25	25	0%	19-Feb-25	16-Mar-25	11-Dec-24	04-Jan-25	-70										
11-1550(M63)	Facade Panels Erection for Module 3 (612pcs. @8pcs/d)	51	51	0%	16-Mar-25	06-May-25	05-Jan-25	24-Feb-25	-70										
<b>Process Building - Boiler &amp; Flue Gas Bld ABWF Works</b>		<b>338</b>	<b>244</b>		<b>01-Aug-24 A</b>	<b>31-Aug-25</b>	<b>29-Oct-24</b>	<b>09-Jun-25</b>	<b>-83</b>										
11-1110	Door, Roller Shutter, Windows and Louvers Installation	180	171	5%	21-Oct-24 A	31-Aug-25	21-Dec-24	09-Jun-25	-83										
11-1120	Metal Railings, Staircase, Platforms & Gratings Installations	200	200	0%	16-Jan-25	03-Aug-25	22-Nov-24	09-Jun-25	-55										
11-1130	Internal Wall and Floor Finishes	180	101	43.89%	01-Aug-24 A	10-Apr-25	04-Dec-24	14-Mar-25	-27										
11-1140	External Finishes, Curtain Walls and Roof Waterproofing	90	89	1%	20-Dec-24 A	14-May-25	27-Nov-24	24-Feb-25	-78	Update Actual Start Date									
11-1530 (M63)	Facade Panels Erection for Module 1 (658pcs. @8pcs/d)	83	74	10.7%	27-Dec-24 A	15-Mar-25	29-Oct-24	11-Jan-25	-62	Update Actual Start Date: Change Relationship from Predecessor 06-8150 from FS0 to FF0									
11-1540 (M63)	Facade Panels Erection for Module 2 (344pcs. @4pcs/d)	86	86	0%	05-Mar-25	30-May-25	02-Jan-25	28-Mar-25	-62										
<b>Turbine Hall Bld ABWF Works</b>		<b>387</b>	<b>142</b>		<b>09-Dec-23 A</b>	<b>21-May-25</b>	<b>30-Jul-24</b>	<b>28-Jun-25</b>	<b>39</b>										
<b>Electrical Bld ABWF Works</b>		<b>350</b>	<b>105</b>		<b>09-Dec-23 A</b>	<b>14-Apr-25</b>	<b>29-Aug-24</b>	<b>28-Jun-25</b>	<b>75</b>										
11-1150	Door, Windows and Louvers Installation	50	45	5%	05-Dec-24 A	13-Feb-25	29-Aug-24	12-Oct-24	-124										
11-1160	Metal Railings, Platforms, Gratings, Cable trench covers Installations	90	16	81.78%	15-Apr-24 A	16-Jan-25	11-Sep-24	27-Sep-24	-110										
11-1170	Internal Wall and Floor Finishes	90	5	95%	09-Dec-23 A	04-Jan-25	23-Sep-24	27-Sep-24	-99										
11-1180	False ceiling and Raise Floor installation	40	40	0%	31-Dec-24	08-Feb-25	03-Sep-24	12-Oct-24	-119	Update Original Duration from 50d to 40d									
11-1190	Roof Waterproofing	60	60	0%	14-Feb-25	14-Apr-25	30-Apr-25	28-Jun-25	75										
11-1540	Facade Panels Erection (167pcs. @8pcs/d)	23	20	14%	27-Sep-24 A	19-Jan-25	08-Sep-24	27-Sep-24	-114										
<b>Turbine Hall ABWF Works</b>		<b>203</b>	<b>142</b>		<b>30-Sep-24 A</b>	<b>21-May-25</b>	<b>30-Jul-24</b>	<b>28-Jun-25</b>	<b>39</b>										
11-1200	Door, Roller Shutter, Windows and Louvers Installation	60	60	0%	21-Jan-25	22-Mar-25	15-Dec-24	12-Feb-25	-38										
11-1210	Metal Railings, Platforms, Gratings, Cable trench covers Installations	60	60	0%	31-Dec-24	28-Feb-25	30-Jul-24	27-Sep-24	-154										
11-1220	Internal Wall and Floor Finishes for remain area	60	60	0%	31-Dec-24	28-Feb-25	16-Oct-24	14-Dec-24	-76										
11-1240	Roof Waterproofing	60	60	0%	22-Mar-25	21-May-25	30-Apr-25	28-Jun-25	39										
11-1540-1(M63)	Facade Structural Frame Erection	22	17	25%	30-Sep-24 A	16-Jan-25	11-Sep-24	27-Sep-24	-111										
11-1550	Facade Panels Erection (207pcs. @4pcs/d)	51	51	0%	16-Jan-25	08-Mar-25	10-Dec-24	29-Jan-25	-38										
<b>Compressor &amp; CCCW Bld ABWF Works</b>		<b>90</b>	<b>90</b>		<b>31-Dec-24</b>	<b>30-Mar-25</b>	<b>12-Mar-25</b>	<b>28-Jun-25</b>	<b>90</b>										
11-1250	Door, Roller Shutter, Windows and Louvers Installation	90	90	0%	31-Dec-24	30-Mar-25	12-Mar-25	09-Jun-25	71										
11-1260	Metal Railings, Platforms, Gratings, Cable trench covers Installations	90	90	0%	31														

Activity ID	Activity Name	Original Duration	Remaining Duration	Activity % Complete	Current Start	Current Finish	Late Start	Late Finish	Total Float	M&S Remarks	2024			
											Dec 85	Jan 86	Feb 87	Mar 88
11-1290	External Finishes and Roof Waterproofing	90	90	0%	31-Dec-24	30-Mar-25	31-Mar-25	28-Jun-25	90					
<b>Chimney ABWF Works</b>		<b>126</b>	<b>60</b>		<b>23-Sep-24 A</b>	<b>28-Feb-25</b>	<b>15-Sep-24</b>	<b>19-Dec-24</b>	<b>-71</b>					
10-2240	Erection of Steel Grating Platform	55	17	70%	23-Sep-24 A	16-Jan-25	15-Sep-24	01-Oct-24	-107					
11-1000	Installation of Metal Staircase, Railings, Lift Shaft	26	26	0%	17-Jan-25	11-Feb-25	24-Nov-24	19-Dec-24	-54					
11-1490	Door and Windows Installation	60	60	0%	31-Dec-24	28-Feb-25	21-Oct-24	19-Dec-24	-71					
11-1500	Internal Wall and Floor Finishes	30	30	0%	17-Jan-25	15-Feb-25	02-Oct-24	31-Oct-24	-107					
<b>Mechanical Treatment Plant &amp; Water Treatment Plant Bld ABWF Works</b>		<b>169</b>	<b>169</b>		<b>31-Dec-24</b>	<b>18-Jun-25</b>	<b>10-Oct-24</b>	<b>24-Mar-25</b>	<b>-85</b>					
<b>Mechanical Treatment Plant ABWF Works</b>		<b>136</b>	<b>136</b>		<b>02-Feb-25</b>	<b>18-Jun-25</b>	<b>10-Oct-24</b>	<b>24-Mar-25</b>	<b>-85</b>					
11-1310	Metal Railings, Platforms, Gratings, Cable trench covers Installations	120	120	0%	02-Feb-25	02-Jun-25	25-Nov-24	24-Mar-25	-69					
11-1320	Internal Wall and Floor Finishes	120	120	0%	02-Feb-25	02-Jun-25	11-Nov-24	10-Mar-25	-83					
11-1330	External Finishes, Curtain Walls and Roof Waterproofing	90	90	0%	02-Feb-25	03-May-25	25-Dec-24	24-Mar-25	-40					
11-1330-1(M63)	Facade Structural Frame Erection	136	136	0%	02-Feb-25	18-Jun-25	10-Oct-24	22-Feb-25	-115					
<b>Water Treatment Plant ABWF Works</b>		<b>102</b>	<b>102</b>		<b>31-Dec-24</b>	<b>11-Apr-25</b>	<b>21-Oct-24</b>	<b>25-Jan-25</b>	<b>-76</b>					
11-1600(7)	Door, Roller Shutter, Windows and Louvers Installation	60	60	0%	06-Feb-25	06-Apr-25	27-Nov-24	25-Jan-25	-71					
11-1610(7)	Metal Railings, Platforms, Gratings, Cable trench covers Installations	90	90	0%	31-Dec-24	30-Mar-25	28-Oct-24	25-Jan-25	-64					
11-1620(7)	Internal Wall and Floor Finishes	90	90	0%	03-Jan-25	03-Apr-25	28-Oct-24	25-Jan-25	-68					
11-1630(7)	External Finishes, and Roof Waterproofing	90	90	0%	11-Jan-25	11-Apr-25	28-Oct-24	25-Jan-25	-76					
11-1640(7)	Facade Structural Frame Erection	90	90	0%	31-Dec-24	30-Mar-25	21-Oct-24	18-Jan-25	-71					
11-1650(7)	Facade Panels Erection (272pcs. @8pcs/d)	60	60	0%	06-Feb-25	06-Apr-25	27-Nov-24	25-Jan-25	-71					
<b>IWMF Substation ABWF Works</b>		<b>219</b>	<b>19</b>		<b>27-Sep-23 A</b>	<b>19-Jan-25</b>	<b>27-Aug-24</b>	<b>28-Jun-25</b>	<b>161</b>					
11-1340	Door, Roller Shutter, Windows and Louvers Installation	60	17	71.67%	18-Dec-23 A	16-Jan-25	07-Dec-24	23-Dec-24	-24					
11-1350	Metal Railings, Platforms, Gratings, Cable trench covers Installations	90	15	83.33%	27-Dec-23 A	14-Jan-25	14-Jun-25	28-Jun-25	165					
11-1360	Internal Wall and Floor Finishes	90	5	95%	27-Sep-23 A	04-Jan-25	27-Aug-24	31-Aug-24	-126					
11-1380	External Finishes and Roof Waterproofing	86	19	77.33%	06-May-24 A	19-Jan-25	09-Jun-25	28-Jun-25	161					
<b>Elevated Drive Way and Associated Structures ABWF Works</b>		<b>132</b>	<b>132</b>		<b>21-Jan-25</b>	<b>02-Jun-25</b>	<b>02-Oct-24</b>	<b>28-Jun-25</b>	<b>26</b>					
11-1430	External Finishes and Roof Waterproofing	132	132	0%	21-Jan-25	02-Jun-25	29-Jan-25	09-Jun-25	7					
<b>Elevated Drive Way RSA to RSG</b>		<b>74</b>	<b>74</b>		<b>21-Jan-25</b>	<b>05-Apr-25</b>	<b>02-Oct-24</b>	<b>09-Jun-25</b>	<b>65</b>					
11-1390	Door, Roller Shutter, Windows and Louvers Installation	30	30	0%	28-Jan-25	27-Feb-25	12-Mar-25	10-Apr-25	43					
11-1400	Metal Railings, Platforms, Gratings, Cable trench covers Installations	60	60	0%	27-Jan-25	28-Mar-25	08-Oct-24	06-Dec-24	-111					
11-1410	Internal Wall and Floor Finishes	60	60	0%	21-Jan-25	22-Mar-25	02-Oct-24	30-Nov-24	-112					
11-1420	False ceiling and Raise Floor installation	60	60	0%	04-Feb-25	05-Apr-25	11-Apr-25	09-Jun-25	65					
<b>Elevated Drive Way RSG to RSU</b>		<b>74</b>	<b>74</b>		<b>21-Jan-25</b>	<b>05-Apr-25</b>	<b>19-Oct-24</b>	<b>28-Jun-25</b>	<b>84</b>					
11-1390-1(M76)	Door, Roller Shutter, Windows and Louvers Installation	30	30	0%	04-Feb-25	06-Mar-25	11-May-25	09-Jun-25	95					
11-1400-1(M76)	Metal Railings, Platforms, Gratings, Cable trench covers Installations	60	60	0%	04-Feb-25	05-Apr-25	30-Apr-25	28-Jun-25	84					
11-1410-1(M76)	Internal Wall and Floor Finishes	60	60	0%	21-Jan-25	22-Mar-25	19-Oct-24	17-Dec-24	-95					
11-1420-1(M76)	False ceiling and Raise Floor installation	60	60	0%	04-Feb-25	05-Apr-25	30-Apr-25	28-Jun-25	84					
<b>Elevated Drive Way RSU to RSAF</b>		<b>74</b>	<b>74</b>		<b>25-Feb-25</b>	<b>09-May-25</b>	<b>01-Dec-24</b>	<b>28-Jun-25</b>	<b>50</b>					
11-1390-2(M76)	Door, Roller Shutter, Windows and Louvers Installation	30	30	0%	25-Feb-25	26-Mar-25	11-May-25	09-Jun-25	75					
11-1400-2(M76)	Metal Railings, Platforms, Gratings, Cable trench covers Installations	60	60	0%	25-Feb-25	25-Apr-25	30-Apr-25	28-Jun-25	64					
11-1410-2(M76)	Internal Wall and Floor Finishes	60	60	0%	25-Feb-25	25-Apr-25	01-Dec-24	29-Jan-25	-86					
11-1420-2(M76)	False ceiling and Raise Floor installation	60	60	0%	11-Mar-25	09-May-25	30-Apr-25	28-Jun-25	50					
<b>Seawater Intake Chamber ABWF Works</b>		<b>53</b>	<b>53</b>		<b>26-Jan-25</b>	<b>19-Mar-25</b>	<b>01-Nov-24</b>	<b>20-Jan-25</b>	<b>-58</b>					
11-1670(7)	Floor, wall and ceiling finishes	30	30	0%	26-Jan-25	24-Feb-25	01-Nov-24	30-Nov-24	-86					
11-1680(7)	Steel platforms, metal covers, cat ladder and staircase	30	30	0%	18-Feb-25	19-Mar-25	29-Nov-24	28-Dec-24	-81					
11-1690(7)	Roller Shutter Installation	30	30	0%	18-Feb-25	19-Mar-25	22-Dec-24	20-Jan-25	-58					
<b>Building Services Installation</b>		<b>500</b>	<b>193</b>		<b>20-May-22 A</b>	<b>11-Jul-25</b>	<b>21-Sep-24</b>	<b>09-Jun-25</b>	<b>-32</b>					
<b>Administration &amp; Viewing Gallery Bld BS Works</b>		<b>212</b>	<b>120</b>		<b>15-Sep-24 A</b>	<b>29-Apr-25</b>	<b>13-Dec-24</b>	<b>27-Apr-25</b>	<b>-2</b>					
12-1000	Plumbing & Drainage System	120	72	40%	21-Oct-24 A	04-Apr-25	15-Feb-25	27-Apr-25	23					
12-1010	MVAC System	120	120	0%	31-Dec-24	29-Apr-25	14-Dec-24	12-Apr-25	-17					
12-1020	Fire Service System (Admin building)	120	54	55%	15-Sep-24 A	05-Mar-25	02-Feb-25	27-Mar-25	22					
12-1030	Electrical and Lighting System	150	107	29%	15-Sep-24 A	16-Apr-25	29-Dec-24	14-Apr-25	-2					
12-1040	CCTV & Surveillance System	150	75	50%	05-Nov-24 A	15-Mar-25	12-Feb-25	27-Apr-25	43					
12-1050	FS Lift & Escalator Installation	60	60	0%	01-Mar-25	29-Apr-25	13-Dec-24	10-Feb-25	-78					
<b>Process Building - Waste Bunker &amp; Tipping Hall Bld BS Works</b>		<b>210</b>	<b>122</b>		<b>11-Oct-23 A</b>	<b>02-May-25</b>	<b>23-Sep-24</b>	<b>27-Apr-25</b>	<b>-4</b>					
12-1060	Plumbing & Drainage System	180	113	37%	11-Oct-23 A	23-Apr-25	04-Jan-25	27-Apr-25	5					
12-1070	MVAC & OCS System	120	77	36%	14-Oct-23 A	17-Mar-25	27-Sep-24	12-Dec-24	-95					
12-1080	Fire Service System (Waste Bunker and Tipping Hall)	180	101	44%	11-Oct-23 A	10-Apr-25	17-Dec-24	27-Mar-25	-14					
12-1090	Electrical and Lighting System	180	122	32%	18-Oct-23 A	02-May-25	23-Sep-24	23-Jan-25	-99					
12-1100	Security, Surveillance & Communication System	180	99	45%	25-Apr-24 A	08-Apr-25	23-Sep-24	30-Dec-24	-99					
<b>Process Building - Boiler &amp; Flue Gas Bld BS Works</b>		<b>500</b>	<b>193</b>		<b>20-May-22 A</b>	<b>11-Jul-25</b>	<b>21-Sep-24</b>	<b>12-Apr-25</b>	<b>-90</b>					
12-1110	Plumbing & Drainage System	180	60	66.67%	11-Oct-23 A	28-Feb-25	08-Nov-24	06-Jan-25	-53					
12-1120	MVAC System	180	153	15%	14-Oct-23 A	01-Jun-25	11-Nov-24	12-Apr-25	-50					
12-1130	Fire Service System (Boiler & Flue Gas Bld)	180	99	45%	11-Oct-23 A	08-Apr-25	19-Dec-24	27-Mar-25	-12					
12-1140	Electrical and Lighting System	180	105	41.67%	18-Oct-23 A	17-Apr-25	22-Sep-24	04-Jan-25	-103					
12-1150	Security, Surveillance & Communication System	180	101	43.89%	25-Apr-24 A	10-Apr-25	21-Sep-24	30-Dec-24	-101					
12-1160	FS Lift & Escalator Installation (Boiler & Flue Gas Bld)	120	120	0%	13-Mar-25	11-Jul-25	14-Oct-24	10-Feb-25	-151					
12-1580(6E)	Earthing and Lightning Protection System	180	142	21.11%	20-May-22 A	24-May-25	22-Sep-24	10-Feb-25	-103					
<b>Turbine Hall Bld BS Works</b>		<b>365</b>	<b>90</b>		<b>11-Oct-23 A</b>	<b>30-Mar-25</b>	<b>02-Oct-24</b>	<b>27-Mar-25</b>	<b>-3</b>					
<b>Electrical Bld BS Works</b>		<b>150</b>	<b>32</b>		<b>11-Oct-23 A</b>	<b>01-Feb-25</b>	<b>17-Dec-24</b>	<b>27-Mar-25</b>	<b>55</b>					
12-1270	Plumbing & Drainage System	60	32	46%	11-Oct-23 A	01-Feb-25	17-Dec-24	18-Jan-25	-14					
12-1280	MVAC System	120	18	85%	25-Feb-24 A	17-Jan-25	17-Dec-24	04-Jan-25	-14					
12-1290	Fire Service System (Electrical Building)	120	30	75%	31-Mar-24 A	29-Jan-25	26-Feb-25	27-Mar-25	57					
12-1300	Electrical and Lighting System	120	25	79%	11-Oct-23 A	25-Jan-25	17-Dec-24	11-Jan-25	-14					

Activity ID	Activity Name	Original Duration	Remaining Duration	Activity % Complete	Current Start	Current Finish	Late Start	Late Finish	Total Float	M85 Remarks	2024		2025			
											Dec 85	Jan 86	Feb 87	Mar 88		
12-1310	Security, Surveillance & Communication System	90	14	85%	25-Feb-24 A	13-Jan-25	17-Dec-24	30-Dec-24	-14							
<b>Turbine Hall BS Works</b>																
12-1320	Plumbing & Drainage System	90	28	68.89%	11-Oct-23 A	27-Jan-25	04-Oct-24	31-Oct-24	-88							
12-1330	MVAC System	60	12	80%	31-May-24 A	11-Jan-25	04-Oct-24	15-Oct-24	-88							
12-1340	Fire Service System (Turbine Hall)	90	36	60%	31-May-24 A	04-Feb-25	19-Nov-24	25-Dec-24	-42							
12-1350	Electrical and Lighting System	90	28	68.89%	11-Oct-23 A	27-Jan-25	19-Nov-24	16-Dec-24	-42							
12-1360	Security, Surveillance & Communication System	90	90	0%	31-Dec-24	30-Mar-25	02-Oct-24	30-Dec-24	-90							
<b>Compressor &amp; CCCW Bid BS Works</b>																
12-1370	Plumbing & Drainage System	60	3	95%	31-Mar-24 A	02-Jan-25	04-Jan-25	06-Jan-25	4							
12-1380	MVAC System	120	6	95%	15-May-24 A	05-Jan-25	07-Apr-25	12-Apr-25	97							
12-1390	Fire Service System (CCCW Bid)	120	18	85%	27-Apr-24 A	17-Jan-25	10-Mar-25	27-Mar-25	69							
12-1400	Electrical and Lighting System	120	60	50%	20-Mar-24 A	28-Feb-25	26-Dec-24	24-Feb-25	-5							
12-1410	Security, Surveillance & Communication System	90	5	95%	20-Mar-24 A	04-Jan-25	26-Dec-24	30-Dec-24	-5							
<b>Chimney BS Works</b>																
12-1520	Plumbing & Drainage System	14	14	0%	16-Feb-25	01-Mar-25	06-Dec-24	19-Dec-24	-72							
12-1530	MVAC System	60	60	0%	16-Feb-25	16-Apr-25	12-Feb-25	12-Apr-25	-4							
12-1540	Fire Service System (Chimney)	60	60	0%	16-Feb-25	16-Apr-25	27-Jan-25	27-Mar-25	-20							
12-1550	Electrical and Lighting System	60	60	0%	16-Feb-25	16-Apr-25	14-Feb-25	14-Apr-25	-2							
12-1560	Security, Surveillance & Communication System	60	60	0%	16-Feb-25	16-Apr-25	01-Nov-24	30-Dec-24	-107							
12-1570	Lift Installation (Chimney)	60	60	0%	01-Mar-25	29-Apr-25	13-Dec-24	10-Feb-25	-78							
<b>Mechanical Treatment Plant &amp; Water Treatment Plant Bid BS Works</b>																
<b>Mechanical Treatment BS Works</b>																
12-1420	Plumbing & Drainage System	65	65	0%	24-Jan-25	29-Mar-25	15-Oct-24	18-Dec-24	-101							
12-1430	MVAC & OCS System	59	59	0%	24-Jan-25	24-Mar-25	15-Oct-24	12-Dec-24	-101							
12-1440	Fire Service System	77	77	0%	24-Jan-25	11-Apr-25	10-Jan-25	27-Mar-25	-14							
12-1450	Electrical and Lighting System	120	120	0%	02-Feb-25	02-Jun-25	16-Dec-24	14-Apr-25	-48							
12-1460	Security, Surveillance & Communication System	90	90	0%	03-Jan-25	03-Apr-25	02-Oct-24	30-Dec-24	-93							
12-1460-1(6C)	Lift Installation	60	60	0%	01-Mar-25	29-Apr-25	13-Dec-24	10-Feb-25	-78							
<b>Water Treatment Plant BS Works</b>																
12-1580(7)	Plumbing & Drainage System	120	66	45%	30-Jun-24 A	06-Mar-25	29-Oct-24	27-Mar-25	21							
12-1590(7)	MVAC & OCS System	120	44	63%	27-Jul-24 A	13-Feb-25	29-Oct-24	12-Dec-24	-62							
12-1600(7)	Fire Service System	107	52	51%	28-Jul-24 A	21-Feb-25	03-Feb-25	27-Mar-25	35							
12-1610(7)	Electrical and Lighting System	120	58	52%	15-Aug-24 A	26-Feb-25	27-Nov-24	24-Jan-25	-33							
12-1620(7)	Security, Surveillance & Communication System	90	33	63%	30-Jul-24 A	02-Feb-25	27-Nov-24	30-Dec-24	-33							
<b>IWMF Substation BS Works</b>																
12-1470	Plumbing & Drainage System	90	10	89%	10-Oct-23 A	09-Jan-25	29-Dec-24	08-Jan-25	-2							
12-1480	MVAC System	90	2	98%	11-Oct-23 A	05-Jan-25	11-Apr-25	12-Apr-25	97							
12-1490	Fire Service System (IWMF Substation)	90	3	97%	12-Oct-23 A	05-Jan-25	25-Mar-25	27-Mar-25	81							
12-1500	Electrical and Lighting System	90	3	97%	10-Oct-23 A	05-Jan-25	29-Dec-24	31-Dec-24	-5							
12-1510	Security, Surveillance & Communication System	90	2	98%	20-Nov-23 A	05-Jan-25	29-Dec-24	30-Dec-24	-6							
<b>Elevated Drive Way and Associated Structures Bid BS Works</b>																
<b>Elevated Drive Way RSA to RSG</b>																
12-1170	Plumbing & Drainage System	60	58	3%	15-Sep-24 A	21-Apr-25	01-Nov-24	14-Apr-25	-7							
12-1180	MVAC System	60	60	0%	20-Feb-25	21-Apr-25	12-Feb-25	12-Apr-25	-9							
12-1190	Fire Service System (Elevated Driveway)	60	58	3%	15-Sep-24 A	21-Apr-25	28-Jan-25	27-Mar-25	-25							
12-1200	Electrical and Lighting System	60	60	0%	20-Feb-25	21-Apr-25	14-Feb-25	14-Apr-25	-7							
12-1210	CCTV & Surveillance System	60	60	0%	20-Feb-25	21-Apr-25	01-Nov-24	30-Dec-24	-112							
<b>Elevated Drive Way RSG to RSU</b>																
12-1580	Plumbing & Drainage System	60	60	0%	20-Feb-25	21-Apr-25	27-Feb-25	27-Apr-25	6							
12-1590	MVAC System	60	60	0%	20-Feb-25	21-Apr-25	12-Feb-25	12-Apr-25	-9							
12-1600	Fire Service System (Elevated Driveway)	60	60	0%	20-Feb-25	21-Apr-25	27-Jan-25	27-Mar-25	-25							
12-1610	Electrical and Lighting System	60	60	0%	20-Feb-25	21-Apr-25	14-Feb-25	14-Apr-25	-7							
12-1620	CCTV & Surveillance System	60	60	0%	03-Feb-25	04-Apr-25	01-Nov-24	30-Dec-24	-95							
<b>Elevated Drive Way RSU to RSAF</b>																
12-1630	Plumbing & Drainage System	60	60	0%	27-Mar-25	25-May-25	27-Feb-25	27-Apr-25	-28							
12-1640	MVAC System	60	60	0%	27-Mar-25	25-May-25	12-Feb-25	12-Apr-25	-43							
12-1650	Fire Service System (Elevated Driveway)	60	60	0%	27-Mar-25	25-May-25	27-Jan-25	27-Mar-25	-59							
12-1660	Electrical and Lighting System	60	60	0%	27-Mar-25	25-May-25	14-Feb-25	14-Apr-25	-41							
12-1670	CCTV & Surveillance System	60	60	0%	27-Mar-25	25-May-25	31-Dec-24	28-Feb-25	-86							
<b>ACC Equipment Structure BS Works</b>																
12-1580(5a)	Plumbing & Drainage System	60	60	0%	22-Jan-25	22-Mar-25	27-Feb-25	27-Apr-25	36							
12-1590(5a)	MVAC System	90	90	0%	22-Jan-25	21-Apr-25	13-Jan-25	12-Apr-25	-9							
12-1600(5a)	Fire Service System (Equipment/Appliance)	60	60	0%	22-Jan-25	22-Mar-25	27-Jan-25	27-Mar-25	5							
12-1610(5a)	Electrical and Lighting System	60	60	0%	22-Jan-25	22-Mar-25	27-Dec-24	24-Feb-25	-26							
12-1620(5a)	Security, Surveillance & Communication System	60	60	0%	22-Jan-25	22-Mar-25	01-Nov-24	30-Dec-24	-82							
<b>Vehicle Fuel Filling Station BS Works</b>																
12-2020(6D)	Fire Service System (Vehicle Filling Station)	60	60	0%	23-Feb-25	23-Apr-25	01-Dec-24	29-Jan-25	-84							
12-2030(6D)	Electrical and Lighting System (Vehicle Filling Station)	60	60	0%	23-Feb-25	23-Apr-25	01-Dec-24	29-Jan-25	-84							
12-2040(6D)	Security, Surveillance & Communication System (Vehicle Filling Station)	30	30	0%	23-Feb-25	24-Mar-25	01-Dec-24	30-Dec-24	-84							
12-2050(6D)	Install Fuel Filling Kiosk	60	60	0%	23-Feb-25	23-Apr-25	11-Apr-25	09-Jun-25	47							
<b>Fire Boat Access BS System</b>																
12-2130(6D)	Diesel Generator & Electrical System (Berth)	60	60	0%	18-Mar-25	16-May-25	27-Mar-25	25-May-25	9							
12-2140(6D)	Microwave Transmission System (Berth)	60	60	0%	18-Mar-25	16-May-25	27-Mar-25	25-May-25	9							



Activity ID	Activity Name	Original Duration	Remaining Duration	Activity % Complete	Current Start	Current Finish	Late Start	Late Finish	Total Float	M85 Remarks	2024										
											Dec 85	Jan 86	Feb 87	Mar 88							
<b>Seawater Intake Chamber BS Works</b>																					
12-1630(7)	Plumbing & Drainage System	60	60	0%	26-Jan-25	26-Mar-25	01-Nov-24	30-Dec-24	-86												
12-1640(7)	MVAC System	60	60	0%	26-Jan-25	26-Mar-25	12-Feb-25	12-Apr-25	17												
12-1650(7)	Fire Service System (Equipment/Appliance)	60	60	0%	26-Jan-25	26-Mar-25	27-Jan-25	27-Mar-25	1												
12-1660(7)	Electrical and Lighting System	60	60	0%	26-Jan-25	26-Mar-25	01-Nov-24	30-Dec-24	-86												
12-1670(7)	Security, Surveillance & Communication System	60	60	0%	26-Jan-25	26-Mar-25	01-Nov-24	30-Dec-24	-86												
<b>Process Equipment Installation</b>																					
<b>Process Building - Waste Bunker &amp; Tipping Hall Bld Process Equipment Installation</b>																					
<b>Equipment, Piping and Instrument Installation and Connection Works</b>																					
<b>Process Building (Module 1)</b>																					
12-3010(6F)	Piping Installation Works	80	31	61.25%	30-Jun-24	30-Jan-25	04-Aug-24	03-Sep-24	-149												
12-3020(6F)	Pipe Testing	60	60	0%	31-Dec-24	28-Feb-25	30-Jul-24	27-Sep-24	-154												
12-3030(6F)	Piping Insulation Works	60	60	0%	31-Dec-24	28-Feb-25	30-Jul-24	27-Sep-24	-154												
<b>Process Building (Module 2)</b>																					
12-3040(6F)	Embedded Piping Installation	60	9	85%	02-Jan-24	08-Jan-25	05-Aug-24	13-Aug-24	-148												
12-3050(6F)	Piping Installation Works	60	60	0%	31-Dec-24	28-Feb-25	30-Jul-24	27-Sep-24	-154												
12-3060(6F)	Pipe Testing	60	60	0%	15-Jan-25	15-Mar-25	14-Aug-24	12-Oct-24	-154												
12-3070(6F)	Piping Insulation Works	60	60	0%	30-Jan-25	30-Mar-25	29-Aug-24	27-Oct-24	-154												
12-3075(M71)	Equipment Installation at Basin Area at +6.5mPD (Included Boiler Drainage Tanks)	90	29	67.78%	15-Aug-24	28-Jan-25	12-Aug-24	09-Sep-24	-141												
<b>Process Building (Module 3)</b>																					
12-3080(6F)	Embedded Piping Installation	60	9	85%	05-Feb-24	08-Jan-25	20-Sep-24	28-Sep-24	-102												
12-3090(6F)	Piping Installation Works	60	60	0%	06-Jan-25	07-Mar-25	30-Aug-24	28-Oct-24	-129												
12-3100(6F)	Pipe Testing	60	60	0%	05-Feb-25	06-Apr-25	29-Sep-24	27-Nov-24	-129												
12-3110(6F)	Piping Insulation Works	60	60	0%	07-Mar-25	06-May-25	29-Oct-24	27-Dec-24	-129												
<b>Process Building (WWTP)</b>																					
12-3160(6F)	Embedded Piping Installation	60	31	48.42%	20-Sep-23	01-Feb-25	23-Oct-24	22-Nov-24	-71												
<b>Ash Treatment Equipment (Module 1)</b>																					
12-4000(6G_R1)	Deliver and installation of Ash Treatment Equipments	120	6	95%	10-Mar-24	05-Jan-25	23-Aug-24	28-Aug-24	-130												
<b>Ash Treatment Equipment (Module 2)</b>																					
12-4010(6G_R1)	Deliver and installation of Ash Treatment Equipments	120	48	60%	30-Jun-24	16-Feb-25	11-Aug-24	27-Sep-24	-142												
<b>Ash Treatment Equipment (Module 3)</b>																					
12-4020(6G_R1)	Deliver and installation of Ash Treatment Equipments	120	48	60%	15-Jul-24	16-Feb-25	11-Sep-24	28-Oct-24	-111												
<b>Process Building (Cranes and Shredder)</b>																					
<b>Process Building (Module 1)</b>																					
13-1000(M81)	Waste Crane Nos. 1 & 2 Installation @+41.6mPD	40	20	50%	08-Dec-24	11-Mar-25	08-Dec-24	27-Dec-24	-74												
13-1000-1(6)	Ash Crane Nos. 1 & 2 Installation @+15.3mPD	70	63	10%	20-Dec-24	03-Mar-25	11-Oct-24	12-Dec-24	-81	Update Actual Start Date											
13-1000-2(6)	Shredder No.1 Installation	39	39	0%	11-Jan-25	19-Feb-25	19-Aug-24	27-Sep-24	-144												
13-1000-3(6)	Waste Crane Hoists Installation (Grid PB1-PB2 and PB11-PB12)	30	30	0%	20-Feb-25	21-Mar-25	08-Dec-24	06-Jan-25	-74												
13-1000-5(6B)	Waste Crane Control Room 1 Equipment (+33.5)	70	49	30%	31-Oct-24	17-Feb-25	01-Dec-24	18-Jan-25	-30												
13-1000-6(6B)	EOTC & Monorail Hoist System installation in Ash Crane Control Room (+15.8mPD & +19.9mPD)	70	70	0%	11-Jan-25	21-Mar-25	04-Oct-24	12-Dec-24	-99												
13-1000-7(6B)	EOTC & Monorail Hoist System installation in Mechanical Shredder Area +28.5mPD	70	70	0%	11-Jan-25	21-Mar-25	10-Nov-24	18-Jan-25	-62												
13-1000-8(6B)	Monorail Hoist System installation in CCR Electrical Switch room +13.75mPD	60	60	0%	31-Dec-24*	28-Feb-25	09-Feb-25	09-Apr-25	40												
13-1000-9(6B)	Monorail Hoist System installation in CCR Electrical Switch room +23mPD	60	60	0%	31-Dec-24*	28-Feb-25	09-Feb-25	09-Apr-25	40												
13-1010(6B)	EOTC Hoist System installation in Main Workshop & Store +15.3mPD	60	21	65%	15-Mar-24	20-Jan-25	29-Dec-24	18-Jan-25	-2												
13-1020(M81)	Ash Crane Control Room 1 Equipment	4	4	0%	11-Jan-25	14-Jan-25	09-Dec-24	12-Dec-24	-33												
<b>Process Building (Module 2)</b>																					
13-1004(M81)	Waste Crane Nos. 3 Installation	30	30	0%	22-Mar-25	20-Apr-25	08-Dec-24	06-Jan-25	-104												
13-1004-1(M71)	Ash Crane No. 3 Installation @+15.3mPD	70	70	0%	21-Dec-24	10-Mar-25	22-Oct-24	30-Dec-24	-70												
13-1004-2(M71)	Shredder No.2 Installation	41	41	0%	22-Jan-25	03-Mar-25	03-Sep-24	13-Oct-24	-141												
13-1004-6(M71)	EOTC & Monorail Hoist System installation in Ash Crane Control Room (+15.8mPD & +19.9mPD)	70	70	0%	05-Feb-25	16-Apr-25	22-Oct-24	30-Dec-24	-106												
13-1004-7(M71)	EOTC & Monorail Hoist System installation in Mechanical Shredder Area +28.5mPD	70	70	0%	31-Dec-24*	10-Mar-25	10-Nov-24	18-Jan-25	-51												
13-1008-5(M71)	Waste Crane Control Room 2 Equipment	70	70	0%	21-Feb-25	02-May-25	28-Nov-24	05-Feb-25	-85												
13-1008-8(M81)	Ash Control Room 2 Equipment	30	30	0%	21-Feb-25	23-Mar-25	01-Dec-24	30-Dec-24	-82												
<b>Process Building (Module 3)</b>																					
13-1008-0(M81)	Waste Crane Nos. 4 Installation	30	30	0%	22-Mar-25	20-Apr-25	08-Dec-24	06-Jan-25	-104	Added predecessor 10-220-1(M81), Removed predecessor 10-220-2(M81)											
13-1008-1(M71)	Ash Crane No. 4 Installation @+15.3mPD	70	70	0%	21-Dec-24	12-Mar-25	22-Oct-24	30-Dec-24	-72												
<b>Process Building (WWTP Equipment Installation)</b>																					
<b>Stage 1 (WWTP Pre-Treatment)</b>																					
13-1009-1(M82)	Mechanical Equipment and Piping Installation	30	18	40%	07-Jul-24	17-Jan-25	07-Nov-24	25-Nov-24	-54												
13-1009-2(M82)	Electrical and Instrumentation Installation	43	43	0%	14-Jan-25	25-Feb-25	21-Nov-24	02-Jan-25	-54												
<b>Stage 2 (WWTP Remaining)</b>																					
13-1010-1(6)	WWTP Piping and instrument installation	120	60	50.04%	01-Mar-23	02-Mar-25	23-Oct-24	21-Dec-24	-71												
13-1010-10(6E)	Provision of Temporary Power Supply for WWTP Testing & Commissioning	56	56	0%	06-Jan-25	02-Mar-25	27-Oct-24	21-Dec-24	-71												
13-1010-11(M63)	Cooling Tower installation @+17.5 mPd	48	48	0%	07-Jan-25	24-Feb-25	04-Dec-24	20-Jan-25	-34												
13-1010-12(M63)	Equipments for Bio-Tank Area @+3.3mPd	120	54	55.04%	07-Jul-24	25-Feb-25	29-Oct-24	21-Dec-24	-65												
13-1010-13(M63)	Equipments for Centrate Area, Inlet Sump & EQ Tank Area @+2.0mPd	60	60	0%	02-Jan-25	02-Mar-25	23-Oct-24	21-Dec-24	-71												
13-1010-2(6)	WWTP Electrical Equipment installation & Cable pulling and termination	60	60	0%	22-Jan-25	22-Mar-25	23-Oct-24	21-Dec-24	-91												
13-1010-5(6B)	EOTC Hoist System installation in WWTP +6.5	60	28	53.42%	15-Aug-24	29-Jan-25	04-Nov-24	01-Dec-24	-59												
13-1010-6(6B)	Monorail Hoist System installation in WWTP +10mPD & +13.3mPD	60	60	0%	02-Jan-25	02-Mar-25	03-Oct-24	01-Dec-24	-91												
13-1010-7(6B)	LVSG 6A/6B @ WWTP Switch room +13.3mPD	60	60	0%	02-Jan-25	02-Mar-25	03-Oct-24	01-Dec-24	-91												
13-1010-8(6B)	UPS DB @ WWTP Switch room @13.3mPd	60	60	0%	02-Jan-25	02-Mar-25	03-Oct-24	01-Dec-24	-91												
13-1020(6F)	Equipment Installation for Equipment Rm, Sludge Dewatering Rm & Chemical Rm Area @+6.5mPd	90	21	76.73%	21-Aug-24	22-Jan-25	01-Dec-24	21-Dec-24	-32												



Activity ID	Activity Name	Original Duration	Remaining Duration	Activity % Complete	Current Start	Current Finish	Late Start	Late Finish	Total Float	M&S Remarks	2024			
											Dec 85	Jan 86	Feb 87	Mar 88
13-1890	Pipe Insulation Works	46	46	0%	31-Dec-24	14-Feb-25	14-Aug-24	28-Sep-24	-139	Update Original Duration from 60d to 46d				
13-1900	Electrical Instrument and Cabling Works	46	46	0%	31-Dec-24	14-Feb-25	14-Aug-24	28-Sep-24	-139	Update Original Duration from 60d to 46d				
<b>FGC Train 6</b>		<b>119</b>	<b>119</b>		<b>31-Dec-24</b>	<b>28-Apr-25</b>	<b>14-Aug-24</b>	<b>27-Dec-24</b>	<b>-122</b>					
13-1930	FGC Unit Condition Check and Repair	70	70	0%	18-Feb-25	28-Apr-25	19-Oct-24	27-Dec-24	-122					
13-1935(6A)	Installation 4 nos. of Transformers for Process Module 3	14	14	0%	31-Dec-24	13-Jan-25	15-Sep-24	28-Sep-24	-107					
13-1960	Pipe Insulation Works	46	46	0%	31-Dec-24	14-Feb-25	14-Aug-24	28-Sep-24	-139	Update Original Duration from 60d to 46d				
13-1970	Electrical Instrument and Cabling Works	46	46	0%	31-Dec-24	14-Feb-25	14-Aug-24	28-Sep-24	-139	Update Original Duration from 60d to 46d				
<b>ACC Equipment Installation</b>		<b>366</b>	<b>152</b>		<b>15-May-24 A</b>	<b>31-May-25</b>	<b>21-Aug-24</b>	<b>02-Jan-25</b>	<b>-149</b>					
<b>ACC Equipment 1 Installation</b>		<b>308</b>	<b>94</b>		<b>15-May-24 A</b>	<b>03-Apr-25</b>	<b>21-Aug-24</b>	<b>12-Dec-24</b>	<b>-112</b>					
13-2000-1(M63)	Condensate Tank & Equipments Delivery and Installation (Module 1)	80	18	78%	15-May-24 A	17-Jan-25	21-Aug-24	07-Sep-24	-132					
13-2010	Piping and Instrument Installation and Connection Works	50	50	0%	31-Dec-24	18-Feb-25	10-Sep-24	29-Oct-24	-112					
13-2010-1(6E)	Air Tight Test	14	14	0%	19-Feb-25	04-Mar-25	23-Nov-24	06-Dec-24	-88					
13-2020	Pipe Insulation Works	80	80	0%	14-Jan-25	03-Apr-25	24-Sep-24	12-Dec-24	-112					
13-2030	Cable Laying and Termination Works	80	80	0%	31-Dec-24	20-Mar-25	24-Sep-24	12-Dec-24	-98					
<b>ACC Equipment 2 Installation</b>		<b>155</b>	<b>94</b>		<b>26-Oct-24 A</b>	<b>03-Apr-25</b>	<b>21-Aug-24</b>	<b>30-Dec-24</b>	<b>-94</b>					
13-2040-1(M63)	Condensate Tank & Equipments Delivery and Installation (Module 2)	90	49	15%	26-Oct-24 A	17-Feb-25	21-Aug-24	08-Oct-24	-132					
13-2050	Piping and Instrument Installation and Connection Works	64	64	0%	31-Dec-24	04-Mar-25	16-Sep-24	18-Nov-24	-106					
13-2050-1(6E)	Air Tight Test	14	14	0%	05-Mar-25	18-Mar-25	11-Dec-24	24-Dec-24	-84					
13-2060	Pipe Insulation Works	80	80	0%	14-Jan-25	03-Apr-25	06-Oct-24	24-Dec-24	-100	Update Original Duration from 90d to 80d				
13-2070	Cable Laying and Termination Works	80	80	0%	14-Jan-25	03-Apr-25	12-Oct-24	30-Dec-24	-94	Update Original Duration from 90d to 80d				
<b>ACC Equipment 3 Installation</b>		<b>135</b>	<b>135</b>		<b>17-Jan-25</b>	<b>31-May-25</b>	<b>21-Aug-24</b>	<b>02-Jan-25</b>	<b>-149</b>					
13-2080-1(M63)	Condensate Tank & Equipments Delivery and Installation (Module 3)	90	90	0%	17-Jan-25	16-Apr-25	21-Aug-24	18-Nov-24	-149					
13-2090	Piping and Instrument Installation and Connection Works	90	90	0%	01-Feb-25	01-May-25	05-Sep-24	03-Dec-24	-149					
13-2100	Pipe Insulation Works	90	90	0%	03-Mar-25	31-May-25	05-Oct-24	02-Jan-25	-149					
13-2110	Cable Laying and Termination Works	90	90	0%	03-Mar-25	31-May-25	05-Oct-24	02-Jan-25	-149					
<b>Turbine Hall Bld Equipment Installation</b>		<b>224</b>	<b>86</b>		<b>15-Aug-24 A</b>	<b>26-Mar-25</b>	<b>30-Jul-24</b>	<b>09-Apr-25</b>	<b>14</b>					
<b>Turbine Hall Module 1 Installation</b>		<b>98</b>	<b>37</b>		<b>07-Oct-24 A</b>	<b>06-Feb-25</b>	<b>10-Sep-24</b>	<b>24-Nov-24</b>	<b>-73</b>					
13-2130	Equipment, Piping and Instrument Installation and Connection Works	52	10	80%	07-Oct-24 A	10-Jan-25	10-Sep-24	20-Sep-24	-111					
13-2130-1(6E)	STG & TBS Piping hydrostatic test	7	7	0%	10-Jan-25	17-Jan-25	21-Sep-24	27-Sep-24	-111					
13-2140	Turbine Hall Piping Insulation Works	32	32	0%	05-Jan-25	06-Feb-25	24-Oct-24	24-Nov-24	-73					
13-2150	Turbine Electrical installation and instrumentation Works	32	29	10%	13-Dec-24 A	06-Feb-25	27-Oct-24	24-Nov-24	-73					
<b>Turbine Hall Module 2 Installation</b>		<b>136</b>	<b>75</b>		<b>07-Oct-24 A</b>	<b>15-Mar-25</b>	<b>05-Aug-24</b>	<b>14-Dec-24</b>	<b>-91</b>					
13-2180	Equipment, Piping and Instrument Installation and Connection Works	60	48	20%	07-Oct-24 A	16-Feb-25	05-Aug-24	21-Sep-24	-148					
13-2180-1(6E)	STG & TBS Piping hydrostatic test	7	7	0%	17-Feb-25	23-Feb-25	22-Sep-24	28-Sep-24	-148					
13-2190	Turbine Hall Piping Insulation Works	60	60	0%	15-Jan-25	15-Mar-25	16-Oct-24	14-Dec-24	-91					
13-2200	Turbine Electrical installation and instrumentation Works	46	46	0%	02-Jan-25	16-Feb-25	30-Aug-24	14-Oct-24	-125	Update Original Duration from 60d to 46d				
<b>Turbine Hall Module 3 Installation</b>		<b>109</b>	<b>78</b>		<b>13-Nov-24 A</b>	<b>18-Mar-25</b>	<b>30-Jul-24</b>	<b>17-Dec-24</b>	<b>-91</b>					
13-2230	Equipment, Piping and Instrument Installation and Connection Works	60	48	20%	13-Nov-24 A	16-Feb-25	28-Aug-24	14-Oct-24	-125					
13-2230-1(6E)	STG & TBS Piping hydrostatic test	7	7	0%	17-Feb-25	23-Feb-25	21-Nov-24	27-Nov-24	-88					
13-2240	Turbine Hall Piping Insulation Works	60	60	0%	18-Jan-25	18-Mar-25	19-Oct-24	17-Dec-24	-91					
13-2250	Turbine Electrical installation and instrumentation Works	77	77	0%	31-Dec-24	17-Mar-25	30-Jul-24	14-Oct-24	-154					
<b>Turbine Hall Electrical Room Equipment Installation</b>		<b>224</b>	<b>86</b>		<b>15-Aug-24 A</b>	<b>26-Mar-25</b>	<b>16-Sep-24</b>	<b>09-Apr-25</b>	<b>14</b>					
13-2280-1(6A)	Transport and Position 4 nos. of Transformers @ 1F (ZH)	15	2	90%	14-Oct-24 A	01-Jan-25	14-Oct-24	15-Oct-24	-78					
13-2300	Other Associated Equipment Installation	60	24	60%	14-Oct-24 A	23-Jan-25	25-Oct-24	17-Nov-24	-67					
13-2310	Cable Laying and Termination for Module 1	79	47	40%	15-Sep-24 A	16-Feb-25	08-Oct-24	24-Nov-24	-83					
13-2730(7)	Cable Laying and Termination for Module 2	86	86	0%	31-Dec-24	26-Mar-25	20-Sep-24	14-Dec-24	-102					
13-2740(7)	Cable Laying and Termination for Module 3	86	86	0%	31-Dec-24	26-Mar-25	23-Sep-24	17-Dec-24	-99					
<b>Turbine Hall Electrical Room @+15.00mPD</b>		<b>198</b>	<b>60</b>		<b>15-Aug-24 A</b>	<b>28-Feb-25</b>	<b>16-Sep-24</b>	<b>09-Apr-25</b>	<b>40</b>					
13-2290-1(6B)	Switchgear & electrical equipment Installation 1F - I&C room (I/O, Server, Control Panel, Workstation)	120	30	75%	15-Aug-24 A	29-Jan-25	16-Sep-24	15-Oct-24	-106					
13-2290-2(6B)	Switchgear & electrical equipment Installation 1F - Generator Control Room (GPP,SP,DC batter Charger,Generator contr	120	30	75%	15-Aug-24 A	29-Jan-25	16-Sep-24	15-Oct-24	-106					
13-2290-3(6B)	Switchgear & electrical equipment Installation 1F - Battery Room (AC UPS,DC Battery Charger)	120	30	75%	15-Aug-24 A	29-Jan-25	16-Sep-24	15-Oct-24	-106					
13-2290-4(6B)	Switchgear & electrical equipment Installation 1F - HV Switch room (GCB)	60	15	75%	07-Oct-24 A	14-Jan-25	01-Oct-24	15-Oct-24	-91					
13-2290-5(6B)	Monorail Hoist System installation in Turbine Hall (1st Floor @+15)	60	60	0%	31-Dec-24	28-Feb-25	09-Feb-25	09-Apr-25	40					
<b>Turbine Hall Electrical Room @+23.50mPD</b>		<b>152</b>	<b>60</b>		<b>30-Aug-24 A</b>	<b>28-Feb-25</b>	<b>08-Oct-24</b>	<b>09-Apr-25</b>	<b>40</b>					
13-2280-2(6A)	Installation 6 nos. of Transformers @ Turbine Hall Electrical Room 3F 23.5mPD	60	3	95%	30-Aug-24 A	02-Jan-25	13-Oct-24	15-Oct-24	-79					
13-2290	Switchgear & electrical equipment Installation 3F (MCC-7,8,9,14,15,16, VSD ,soft starter,UPS)	60	15	75%	07-Oct-24 A	14-Jan-25	08-Oct-24	22-Oct-24	-84					
13-2290-6(6B)	Monorail Hoist System installation in Turbine Hall (3rd Floor @+23.5)	60	60	0%	31-Dec-24	28-Feb-25	09-Feb-25	09-Apr-25	40					
<b>Compressor &amp; CCCW Bld Equipment Installation</b>		<b>259</b>	<b>45</b>		<b>01-May-24 A</b>	<b>13-Feb-25</b>	<b>16-Sep-24</b>	<b>30-Oct-24</b>	<b>-106</b>					
<b>Air Compressor Equipment Installation</b>		<b>90</b>	<b>9</b>		<b>01-Jun-24 A</b>	<b>08-Jan-25</b>	<b>22-Sep-24</b>	<b>30-Sep-24</b>	<b>-100</b>					
13-2710(M62)	Electrical Instrumentation and Insulation Installations	90	9	90%	01-Jun-24 A	08-Jan-25	22-Sep-24	30-Sep-24	-100					
13-2720(M62)	Cable Laying and Termination Works for Air Compressor	90	9	90%	01-Jun-24 A	08-Jan-25	22-Sep-24	30-Sep-24	-100					
<b>CCCW Bld Equipment Installation</b>		<b>259</b>	<b>45</b>		<b>01-May-24 A</b>	<b>13-Feb-25</b>	<b>16-Sep-24</b>	<b>30-Oct-24</b>	<b>-106</b>					
13-2330	CCCW Equipment Installation	100	10	90%	01-May-24 A	09-Jan-25	21-Sep-24	30-Sep-24	-101					
13-2340	Piping installation and connections	90	27	70%	01-Jun-24 A	26-Jan-25	16-Sep-24	12-Oct-24	-106					
13-2350	Electrical Instrumentation and Insulation Installations	45	45	0%	31-Dec-24	13-Feb-25	16-Sep-24	30-Oct-24	-106					
13-2360	Cable Laying and Termination Works	45	45	0%	31-Dec-24	13-Feb-25	16-Sep-24	30-Oct-24	-106					
<b>Mechanical Treatment Plant Bld Process Equipment Installation</b>		<b>158</b>	<b>158</b>		<b>01-Mar-25</b>	<b>05-Aug-25</b>	<b>04-Oct-24</b>	<b>10-Mar-25</b>	<b>-148</b>					
13-2370	MT Plant Process Mechanical Equipment Installation	158	158	0%	01-Mar-25	05-Aug-25	04-Oct-24	10-Mar-25	-148	Update Original Duration from 189d to 158d				
<b>Water Treatment Bld Process Equipment Installation</b>		<b>366</b>	<b>181</b>		<b>20-Feb-24 A</b>	<b>30-Jun-25</b>	<b>26-Sep-24</b>	<b>09-May-25</b>	<b>-51</b>					
<b>Stage 1 (WTP Potable to Demin)</b>		<b>30</b>	<b>20</b>		<b>20-Feb-24 A</b>	<b>19-Jan-25</b>	<b>09-Oct-24</b>	<b>28-Oct-24</b>	<b>-83</b>					
13-2385-2(M82)	Electrical and instrumentation Installation	30	20	34%	20-Feb-24 A	19-Jan-25	09-Oct-24	28-Oct-24	-83					
<b>Stage 2 (WTP Remaining)</b>		<b>366</b>	<b>181</b>		<b>20-Feb-24 A</b>	<b>30-Jun-25</b>	<b>26-Sep-24</b>	<b>09-May-25</b>	<b>-51</b>					

Activity ID	Activity Name	Original Duration	Remaining Duration	Activity % Complete	Current Start	Current Finish	Late Start	Late Finish	Total Float	M85 Remarks	2024			2025			
											Dec 85	Jan 86	Feb 87	Mar 88	Apr 89	May 90	Jun 91
13-2390	Mechanical Equipment and Piping Installation	150	15	90%	20-Feb-24 A	14-Jan-25	29-Nov-24	13-Dec-24	-32								
13-2410	Electrical and instrumentation Installation	62	42	33%	05-Nov-24 A	10-Feb-25	02-Nov-24	13-Dec-24	-59								
13-2410-2(6D)	Laboratory furniture installation @ WTP Bldg @+13.5mPD	120	120	0%	02-Mar-25	30-Jun-25	10-Jan-25	09-May-25	-51								
13-2410-4(6B)	EOTC & Monorail Hoist System installation in WTP +6.5mPD	90	33	63.33%	11-Aug-24 A	01-Feb-25	17-Dec-24	18-Jan-25	-14								
13-2410-5(6B)	Monorail Hoist System Installation in WTP +13.5mPD	90	90	0%	31-Dec-24	30-Mar-25	16-Jan-25	15-Apr-25	16								
13-2410-6(6B)	MCC-12 @ WTP Switch Room	62	16	75%	05-Nov-24 A	15-Jan-25	23-Oct-24	07-Nov-24	-69								
13-2410-7(6B)	DB for MCC-12 @ WTP Switch Room	47	42	10%	11-Dec-24 A	11-Feb-25	26-Sep-24	07-Nov-24	-95	Update Actual Start Date							
13-2410-8(6B)	UPS DB @ WTP Switch room @+6.5mPd	47	42	10%	11-Dec-24 A	11-Feb-25	26-Sep-24	07-Nov-24	-95	Update Actual Start Date							
<b>IWMF Substation Bld Equipment Installation</b>		<b>252</b>	<b>64</b>		<b>15-May-24 A</b>	<b>04-Mar-25</b>	<b>01-Aug-24</b>	<b>07-Oct-24</b>	<b>-148</b>								
13-2440	132kV GIS Switch Gear @+6.5mPD	110	8	92.73%	15-May-24 A	07-Jan-25	11-Sep-24	18-Sep-24	-111								
13-2450	GIS Insulation Switchboard installation	110	8	92.73%	15-May-24 A	07-Jan-25	11-Sep-24	18-Sep-24	-111								
13-2460	Main Switch Board Installation (11kV)	110	8	92.73%	15-May-24 A	07-Jan-25	27-Aug-24	03-Sep-24	-126								
13-2470	Other Associated Equipment Installation	30	30	0%	08-Jan-25	06-Feb-25	04-Sep-24	03-Oct-24	-126								
13-2480	Cable Laying and Termination	90	64	28.89%	01-Aug-24 A	04-Mar-25	01-Aug-24	03-Oct-24	-152								
13-2640(7)	Deliver and Position of EDGs (11kV)	30	23	23.33%	15-May-24 A	22-Jan-25	15-Sep-24	07-Oct-24	-107								
<b>Elevated Drive Way &amp; Storage Bld Equipment Installation</b>		<b>110</b>	<b>110</b>		<b>31-Dec-24</b>	<b>19-Apr-25</b>	<b>13-Nov-24</b>	<b>02-Mar-25</b>	<b>-48</b>								
13-2500	Workshop Equipment	110	110	0%	31-Dec-24	19-Apr-25	13-Nov-24	02-Mar-25	-48								
13-2630(6A)	Installation 2nos. of Transformers (Ramp Area TX Room +6.5mPD)	30	30	0%	07-Feb-25	09-Mar-25	23-Nov-24	22-Dec-24	-76								
13-2630(7)	Electrical Cable laying and termination	60	60	0%	07-Feb-25	08-Apr-25	23-Nov-24	21-Jan-25	-76								
13-2630-2(6D)	EOTC Hoist System installation in Vehicle Workshop +6.5mPD	41	41	0%	31-Dec-24*	09-Feb-25	09-Dec-24	18-Jan-25	-22								
<b>Seawater Intake Chamber</b>		<b>105</b>	<b>105</b>		<b>05-Mar-25</b>	<b>17-Jun-25</b>	<b>14-Dec-24</b>	<b>25-Sep-26</b>	<b>465</b>								
13-2540-1(6B)	Monorail Hoist System installation in Sea Water Intake Pump Area	90	90	0%	20-Mar-25	17-Jun-25	28-Jun-26	25-Sep-26	465								
13-2540-2(7)	Seawater Intake Pumps and Associated equipment installation	30	30	0%	05-Mar-25	03-Apr-25	14-Dec-24	12-Jan-25	-81								
<b>Equipment Installation at External Area</b>		<b>148</b>	<b>148</b>		<b>16-Jan-25</b>	<b>13-Jun-25</b>	<b>10-Oct-24</b>	<b>24-Feb-25</b>	<b>-109</b>								
13-2510	Installation of Container Cranes at Berth Area	45	45	0%	17-Mar-25	01-May-25	05-Dec-24	18-Jan-25	-103								
13-2520	Fuel Oil Reception and Distribution System Installation at Berth Area	30	30	0%	16-Jan-25	15-Feb-25	10-Oct-24	08-Nov-24	-99	Changed dur to 30d							
13-2525	Weighbridge Equipment Installation (Inside Kiosk)	21	21	0%	10-Mar-25	30-Mar-25	22-Dec-24	11-Jan-25	-78								
13-2530	Weighbridge System & Equipment Installation (External)	14	14	0%	07-Mar-25	20-Mar-25	29-Dec-24	11-Jan-25	-68								
13-2540	Traffic Control System Installation & Testing	90	90	0%	16-Mar-25	13-Jun-25	27-Nov-24	24-Feb-25	-109								
<b>External Process Pipe Works</b>		<b>265</b>	<b>143</b>		<b>25-Jun-24 A</b>	<b>22-May-25</b>	<b>30-Jul-24</b>	<b>30-Dec-24</b>	<b>-143</b>								
<b>Process and Non-process Piping Works</b>		<b>184</b>	<b>143</b>		<b>20-Oct-24 A</b>	<b>22-May-25</b>	<b>30-Jul-24</b>	<b>30-Dec-24</b>	<b>-143</b>								
<b>Piping from Module 1 to Turbine Bld</b>		<b>60</b>	<b>60</b>		<b>31-Dec-24</b>	<b>28-Feb-25</b>	<b>30-Jul-24</b>	<b>27-Sep-24</b>	<b>-154</b>								
13-2560	Piping Pressure Test	60	60	0%	31-Dec-24	28-Feb-25	30-Jul-24	27-Sep-24	-154								
13-2570	Piping Insulation Works	60	60	0%	31-Dec-24	28-Feb-25	30-Jul-24	27-Sep-24	-154								
<b>Pipe Rack Piping from Module 2 &amp; 3 to Turbine Bld</b>		<b>90</b>	<b>90</b>		<b>31-Dec-24</b>	<b>30-Mar-25</b>	<b>31-Jul-24</b>	<b>28-Oct-24</b>	<b>-153</b>								
13-2590	Piping Pressure Test	60	60	0%	31-Dec-24	28-Feb-25	31-Jul-24	28-Sep-24	-153								
13-2600	Piping Insulation Works	60	60	0%	30-Jan-25	30-Mar-25	30-Aug-24	28-Oct-24	-153								
<b>Pipe Bridge B Piping from Turbine Bld 1 to CCCW Bld</b>		<b>85</b>	<b>85</b>		<b>31-Dec-24</b>	<b>25-Mar-25</b>	<b>04-Sep-24</b>	<b>27-Nov-24</b>	<b>-118</b>								
13-2680	Piping Pressure Test	60	60	0%	31-Dec-24	28-Feb-25	04-Sep-24	02-Nov-24	-118								
13-2690	Piping Insulation Works	60	60	0%	25-Jan-25	25-Mar-25	29-Sep-24	27-Nov-24	-118								
<b>Pipe Bridge B Piping from Turbine Bld 2&amp;3 to CCCW Bld</b>		<b>90</b>	<b>90</b>		<b>31-Dec-24</b>	<b>30-Mar-25</b>	<b>15-Aug-24</b>	<b>12-Nov-24</b>	<b>-138</b>								
13-2710	Piping Pressure Test	60	60	0%	31-Dec-24	28-Feb-25	15-Aug-24	13-Oct-24	-138								
13-2720	Piping Insulation Works	60	60	0%	30-Jan-25	30-Mar-25	14-Sep-24	12-Nov-24	-138								
<b>Pipe Bridge C Piping from Turbine Bld to ACC 1</b>		<b>125</b>	<b>84</b>		<b>20-Oct-24 A</b>	<b>24-Mar-25</b>	<b>27-Sep-24</b>	<b>19-Dec-24</b>	<b>-95</b>								
13-2640	Piping Installation Works	60	54	10%	20-Oct-24 A	22-Feb-25	27-Sep-24	19-Nov-24	-95								
13-2650	Piping Pressure Test	60	60	0%	09-Jan-25	09-Mar-25	06-Oct-24	04-Dec-24	-95								
13-2660	Piping Insulation Works	60	60	0%	24-Jan-25	24-Mar-25	21-Oct-24	19-Dec-24	-95								
<b>Pipe Bridge C Piping from Turbine Bld to ACC 2</b>		<b>102</b>	<b>102</b>		<b>04-Jan-25</b>	<b>15-Apr-25</b>	<b>20-Sep-24</b>	<b>30-Dec-24</b>	<b>-106</b>								
13-2700(M64)	Piping Installation Works	60	60	0%	04-Jan-25	04-Mar-25	20-Sep-24	18-Nov-24	-106								
13-2710(M64)	Piping Pressure Test	60	60	0%	25-Jan-25	25-Mar-25	11-Oct-24	09-Dec-24	-106								
13-2720(M64)	Piping Insulation Works	60	60	0%	15-Feb-25	15-Apr-25	01-Nov-24	30-Dec-24	-106								
<b>Pipe Bridge C Piping from Turbine Bld to ACC 3</b>		<b>81</b>	<b>81</b>		<b>03-Mar-25</b>	<b>22-May-25</b>	<b>07-Oct-24</b>	<b>26-Dec-24</b>	<b>-147</b>								
13-2730(M64)	Piping Installation Works	60	60	0%	03-Mar-25	01-May-25	07-Oct-24	05-Dec-24	-147								
13-2740(M64)	Piping Pressure Test	60	60	0%	24-Mar-25	22-May-25	28-Oct-24	26-Dec-24	-147								
<b>Chimney Flue Gas Ducting Works</b>		<b>214</b>	<b>92</b>		<b>25-Jun-24 A</b>	<b>01-Apr-25</b>	<b>27-Sep-24</b>	<b>19-Dec-24</b>	<b>-103</b>								
13-2510(7)	Fabrication and Delivery of Chimney Flue Gas Duct	110	21	80.91%	25-Jun-24 A	20-Jan-25	27-Sep-24	17-Oct-24	-95								
13-2610	Line 1 & 2 Flue Gas Duct Erection Works and weld test	50	50	0%	31-Dec-24	18-Feb-25	27-Sep-24	15-Nov-24	-95								
13-2610-0(M81)	Line 3 & 4 Flue Gas Duct Erection Works and weld test	50	50	0%	17-Jan-25	07-Mar-25	02-Oct-24	20-Nov-24	-107								
13-2610-0(M81)10	Line 5 & 6 Flue Gas Duct Erection Works and weld test	50	50	0%	26-Jan-25	16-Mar-25	11-Oct-24	29-Nov-24	-107								
13-2610-1(6F)	Line 1, 2 & 3 South Side Pipe connection between pipe bridge and chimney	9	9	0%	27-Feb-25	07-Mar-25	16-Nov-24	24-Nov-24	-103								
13-2610-2(6F)	Line 4, 5 & 6 North Side Pipe connection between pipe bridge and chimney	9	9	0%	17-Mar-25	25-Mar-25	30-Nov-24	08-Dec-24	-107								
13-2620	Line 1 & 2 Flue Gas Duct Insulation Works	12	12	0%	21-Mar-25	01-Apr-25	25-Nov-24	06-Dec-24	-116								
13-2630	CEMS Delivery and installation (3nrs.)	30	30	0%	24-Feb-25	25-Mar-25	20-Nov-24	19-Dec-24	-96								
13-2700(6F)	Flue Gas Duct Instrumentation Works	30	30	0%	24-Feb-25	25-Mar-25	20-Nov-24	19-Dec-24	-96								
13-2710(6F)	Equipment installation	30	30	0%	24-Feb-25	25-Mar-25	20-Nov-24	19-Dec-24	-96								
<b>Landscape, External Road and Drains Works</b>		<b>1144</b>	<b>260</b>		<b>28-Apr-22 A</b>	<b>16-Sep-25</b>	<b>02-Aug-24</b>	<b>26-Sep-25</b>	<b>10</b>								
<b>Site Wide/External BS System</b>		<b>245</b>	<b>245</b>		<b>14-Jan-25</b>	<b>16-Sep-25</b>	<b>27-Nov-24</b>	<b>14-Jun-25</b>	<b>-94</b>								
14-1000(M81)	BS Works for Weighbridge	45	45	0%	14-Feb-25	30-Mar-25	28-Nov-24	11-Jan-25	-78								
14-1100(6D)	Site Wide and External BS System	200	200	0%	01-Mar-25	16-Sep-25	27-Nov-24	14-Jun-25	-94								
14-3030(7)	Electrical Services Installation at Berth Area	90	90	0%	14-Jan-25	14-Apr-25	06-Feb-25	06-May-25	22								
<b>External Utilities Works</b>		<b>1134</b>	<b>250</b>		<b>28-Apr-22 A</b>	<b>06-Sep-25</b>	<b>02-Aug-24</b>	<b>26-Sep-25</b>	<b>20</b>								
<b>External Utilities C&amp;S Works</b>		<b>338</b>	<b>250</b>		<b>07-Sep-24 A</b>	<b>06-Sep-25</b>	<b>02-Aug-24</b>	<b>19-Jul-25</b>	<b>-49</b>								
14-1055(7)	Cable Duct and Drawpit	250	250	0%	31-Dec-24	06-Sep-25	11-Nov-24	19-Jul-25	-49								



Activity ID	Activity Name	Original Duration	Remaining Duration	Activity % Complete	Current Start	Current Finish	Late Start	Late Finish	Total Float	M85 Remarks	2024											
											Dec 85	Jan 86	Feb 87	Mar 88								
<b>Turbine Hall &amp; CCCW Building 11kV T&amp;C</b>																						
16-1940(1)	Systemwise Construction Completion Inspection and Testing	7	7	0%	30-Jan-25	05-Feb-25	16-Oct-24	22-Oct-24	-106													
16-1940(7)	Conduct Site Acceptance Tests (SAT)	15	15	0%	06-Feb-25	20-Feb-25	23-Oct-24	06-Nov-24	-106													
16-1950(7)	Conduct System Commissioning Tests	30	30	0%	21-Feb-25	22-Mar-25	07-Nov-24	06-Dec-24	-106													
<b>Mechanical Treatment and Water Treatment Plant 11kV T&amp;C</b>																						
16-2200(M61)	Systemwise Construction Completion Inspection	14	14	0%	27-Jan-25	10-Feb-25	24-Oct-24	06-Nov-24	-95													
16-2210(7)	Conduct Site Acceptance Tests (SAT)	15	15	0%	10-Feb-25	25-Feb-25	07-Nov-24	21-Nov-24	-95													
16-2220(7)	Conduct System Commissioning Tests	15	15	0%	25-Feb-25	12-Mar-25	22-Nov-24	06-Dec-24	-95													
<b>MVAC &amp; OCS System T&amp;C</b>																						
16-1150	Systemwise Construction Completion Inspection	14	14	0%	24-Mar-25	07-Apr-25	13-Dec-24	26-Dec-24	-101													
<b>Compressor &amp; CCCW Bld T&amp;C</b>																						
16-1210	Systemwise Construction Completion Inspection	7	7	0%	09-Jan-25	16-Mar-25	01-Oct-24	06-Dec-24	-100													
16-1220(7)	Conduct Site Acceptance Tests	30	30	0%	16-Jan-25	14-Feb-25	08-Oct-24	06-Nov-24	-100													
16-1230(7)	Conduct System Commissioning Tests	30	30	0%	15-Feb-25	16-Mar-25	07-Nov-24	06-Dec-24	-100													
<b>Fuel Oil System T&amp;C</b>																						
16-1240	Systemwise Construction Completion Inspection	7	7	0%	08-Feb-25	15-Feb-25	02-Nov-24	08-Nov-24	-99													
16-1250(7)	Conduct Site Acceptance Tests	14	14	0%	15-Feb-25	01-Mar-25	09-Nov-24	22-Nov-24	-99													
16-1260(7)	Conduct System Commissioning Tests	14	14	0%	01-Mar-25	15-Mar-25	23-Nov-24	06-Dec-24	-99													
<b>CCCW System T&amp;C</b>																						
16-1270	Systemwise Construction Completion Inspection	14	14	0%	07-Feb-25	20-Feb-25	24-Oct-24	06-Nov-24	-106													
16-1280(7)	Conduct Site Acceptance Tests	30	30	0%	21-Feb-25	22-Mar-25	07-Nov-24	06-Dec-24	-106													
16-1290(7)	Conduct System Commissioning Tests	30	30	0%	23-Mar-25	21-Apr-25	07-Dec-24	05-Jan-25	-106													
<b>Turbine Hall Process T&amp;C</b>																						
<b>Turbine Hall Module 1</b>																						
16-1300(7)	Turbine Module 1 Systemwise Construction Completion Inspection	20	20	0%	16-Feb-25	08-Mar-25	25-Nov-24	14-Dec-24	-83													
16-1310(7)	Turbine Module 1 Conduct Site Acceptance Tests	60	60	0%	08-Mar-25	07-May-25	15-Dec-24	12-Feb-25	-83													
<b>Turbine Hall Module 2</b>																						
16-1330(7)	Turbine Module 2 Systemwise Construction Completion Inspection	30	30	0%	27-Mar-25	25-Apr-25	15-Dec-24	13-Jan-25	-102													
<b>Turbine Hall Module 3</b>																						
16-1360(7)	Turbine Module 3 Systemwise Construction Completion Inspection	30	30	0%	27-Mar-25	25-Apr-25	18-Dec-24	16-Jan-25	-99													
<b>Desalination &amp; Demineralization Process T&amp;C</b>																						
<b>Stage 1 (WTP Potable to Demin)</b>																						
16-1295-1(M82)	Systemwise Construction Completion Inspection	13	13	0%	12-Jan-25	25-Jan-25	22-Oct-24	03-Nov-24	-83													
16-1295-2(M82)	Conduct Site Acceptance Tests	13	13	0%	15-Jan-25	28-Jan-25	25-Oct-24	06-Nov-24	-83													
16-1295-3(M82)	Conduct System Commissioning Tests	30	30	0%	28-Jan-25	27-Feb-25	07-Nov-24	06-Dec-24	-83													
16-2000(6D)	Provision of fresh water for testing	0	0	0%	27-Feb-25		07-Dec-24		-83	Remove Predecessor 16-1320 FSO; Remove Successor 16-1090 FSO; Add Successor 16-1660 FSO; Add Predecessor 16-1295-1(M82) FSO												
<b>Stage 2 (WTP Remaining)</b>																						
16-1300	Systemwise Construction Completion Inspection	13	13	0%	05-Mar-25	16-Apr-25	14-Dec-24	25-Jan-25	-81													
16-1310	Conduct Site Acceptance Tests	30	30	0%	18-Mar-25	16-Apr-25	27-Dec-24	25-Jan-25	-81	Remove Predecessors 11-1600(7), 11-1610(7), 11-1620(7) & 11-1630(7) FSO												
<b>WWTP Process T&amp;C</b>																						
<b>Stage 1 (WWTP Pre-Treatment)</b>																						
16-1625-1(M82)	Systemwise Construction Completion Inspection	7	7	0%	23-Feb-25	02-Mar-25	01-Jan-25	07-Jan-25	-54													
16-1625-2(M82)	Conduct Site Acceptance Tests (SAT)	13	13	0%	23-Feb-25	08-Mar-25	01-Jan-25	13-Jan-25	-54													
16-1625-3(M82)	Conduct System Commissioning Tests (with temporary power)	30	30	0%	08-Mar-25	07-Apr-25	14-Jan-25	12-Feb-25	-54													
<b>Stage 2 (WWTP Remaining)</b>																						
16-1330	Systemwise Construction Completion Inspection	7	7	0%	23-Mar-25	29-Mar-25	22-Dec-24	28-Dec-24	-91													
16-1340	Conduct Site Acceptance Tests (SAT)	30	30	0%	23-Mar-25	21-Apr-25	22-Dec-24	20-Jan-25	-91													
<b>Ash Treatment Equipments T&amp;C</b>																						
16-1970(M62)	Systemwise Construction Completion Inspection - Module 1	30	30	0%	06-Jan-25	04-Feb-25	29-Aug-24	27-Sep-24	-130													
16-1970-1(M68)	Systemwise Construction Completion Inspection - Module 2	30	30	0%	17-Feb-25	18-Mar-25	28-Sep-24	27-Oct-24	-142													
16-1970-2(M68)	Systemwise Construction Completion Inspection - Module 3	30	30	0%	17-Feb-25	18-Mar-25	29-Oct-24	27-Nov-24	-111													
<b>Crane System T&amp;C</b>																						
<b>Crane System T&amp;C for Module 1 Hot Commissioning</b>																						
<b>Waste Crane System T&amp;C</b>																						
16-1390	Systemwise Construction Completion Inspection	7	7	0%	22-Mar-25	28-Mar-25	19-Jan-25	25-Jan-25	-62	Changed dur to 7d												
16-1400	Conduct Site Acceptance Tests	15	15	0%	29-Mar-25	12-Apr-25	26-Jan-25	09-Feb-25	-62	Changed dur to 15d												
<b>Ash Crane System T&amp;C</b>																						
16-1970	Systemwise Construction Completion Inspection	14	14	0%	22-Mar-25	04-Apr-25	13-Dec-24	26-Dec-24	-99													
<b>Control SCADA Systems T&amp;C</b>																						
16-1780	Systemwise Construction Completion Inspection	14	14	0%	30-Jan-25	12-Feb-25	24-Oct-24	06-Nov-24	-98													
16-1790	Conduct Site Acceptance Tests	30	30	0%	24-Feb-25	26-Mar-25	07-Nov-24	06-Dec-24	-109													
16-1800	Conduct System Commissioning Tests	30	30	0%	26-Mar-25	25-Apr-25	07-Dec-24	05-Jan-25	-109													
<b>CEMS Systems T&amp;C</b>																						
16-1970(6G)	Systemwise Construction Completion Inspection	3	3	0%	26-Mar-25	28-Mar-25	20-Dec-24	22-Dec-24	-96													
16-1980(6G)	Conduct Site Acceptance Tests	7	7	0%	29-Mar-25	04-Apr-25	23-Dec-24	29-Dec-24	-96													
<b>Monorail Hoist System T&amp;C</b>																						
16-2030(M61)	Systemwise Construction Completion Inspection	14	14	0%	25-Mar-25	07-Apr-25	10-Apr-25	23-Apr-25	16													

Activity ID	Activity Name	Original Duration	Remaining Duration	Activity % Complete	Current Start	Current Finish	Late Start	Late Finish	Total Float	M85 Remarks	2024			
											Dec 85	Jan 86	Feb 87	Mar 88
<b>Earthing &amp; Lightning Protection System T&amp;C</b>														
16-1970(6D)	Systemwise Construction Completion Inspection	65	65	0%	19-Jan-25	24-Mar-25	29-Sep-24	02-Dec-24	-112					
16-1980(6D)	Conduct Site Acceptance Tests (SAT)	10	10	0%	19-Jan-25	28-Jan-25	29-Sep-24	08-Oct-24	-112					
16-1990(6D)	Conduct System Commissioning Tests	25	25	0%	29-Jan-25	22-Feb-25	09-Oct-24	02-Nov-24	-112					
<b>Incineration Processing T&amp;C</b>														
<b>Module 1 &amp; Equipments (Train 1 &amp; 2)</b>														
16-1540	Site Acceptance Test (Systemwise Construction Completion Inspection)	304	151	0%	15-May-24 A	30-May-25	31-Jul-24	27-Dec-24	-154					
16-1550	Site Acceptance Test (Pre-commissioning Test)	242	90	0%	15-May-24 A	30-Mar-25	01-Aug-24	29-Oct-24	-152					
<b>Module 2 &amp; Equipments (Train 3 &amp; 4)</b>														
16-1560	Site Acceptance Test (Systemwise Construction Completion Inspection)	120	46	61.5%	15-May-24 A	28-Feb-25	12-Aug-24	27-Sep-24	-154					
16-1570	Site Acceptance Test (Pre-commissioning Test)	120	90	25%	10-Jun-24 A	30-Mar-25	01-Aug-24	29-Oct-24	-152					
<b>Module 3 &amp; Equipments (Train 5 &amp; 6)</b>														
16-1580	Site Acceptance Test (Systemwise Construction Completion Inspection)	150	117	0%	30-Oct-24 A	28-Apr-25	01-Aug-24	26-Nov-24	-153					
16-1590	Site Acceptance Test (Pre-commissioning Test)	120	88	26.67%	30-Oct-24 A	30-Mar-25	01-Aug-24	27-Oct-24	-154	Change Relationship from Predecessor 13-2720 from FS-30 to FF14				
16-1590	Site Acceptance Test (Pre-commissioning Test)	90	90	0%	01-Jan-25	30-May-25	31-Jul-24	27-Dec-24	-154	Change Relationship from Predecessor 13-2690 from FS0 to FF30				