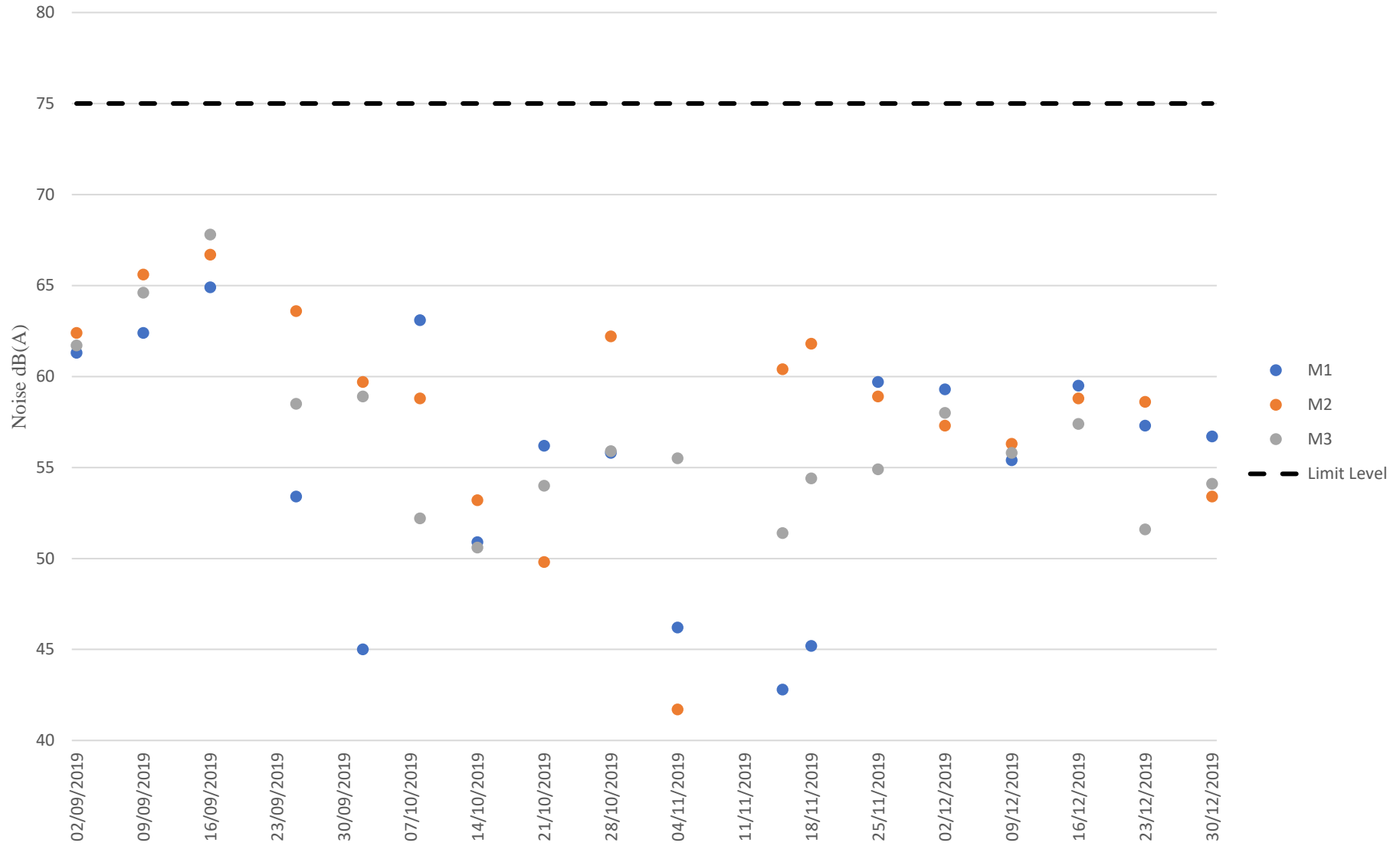
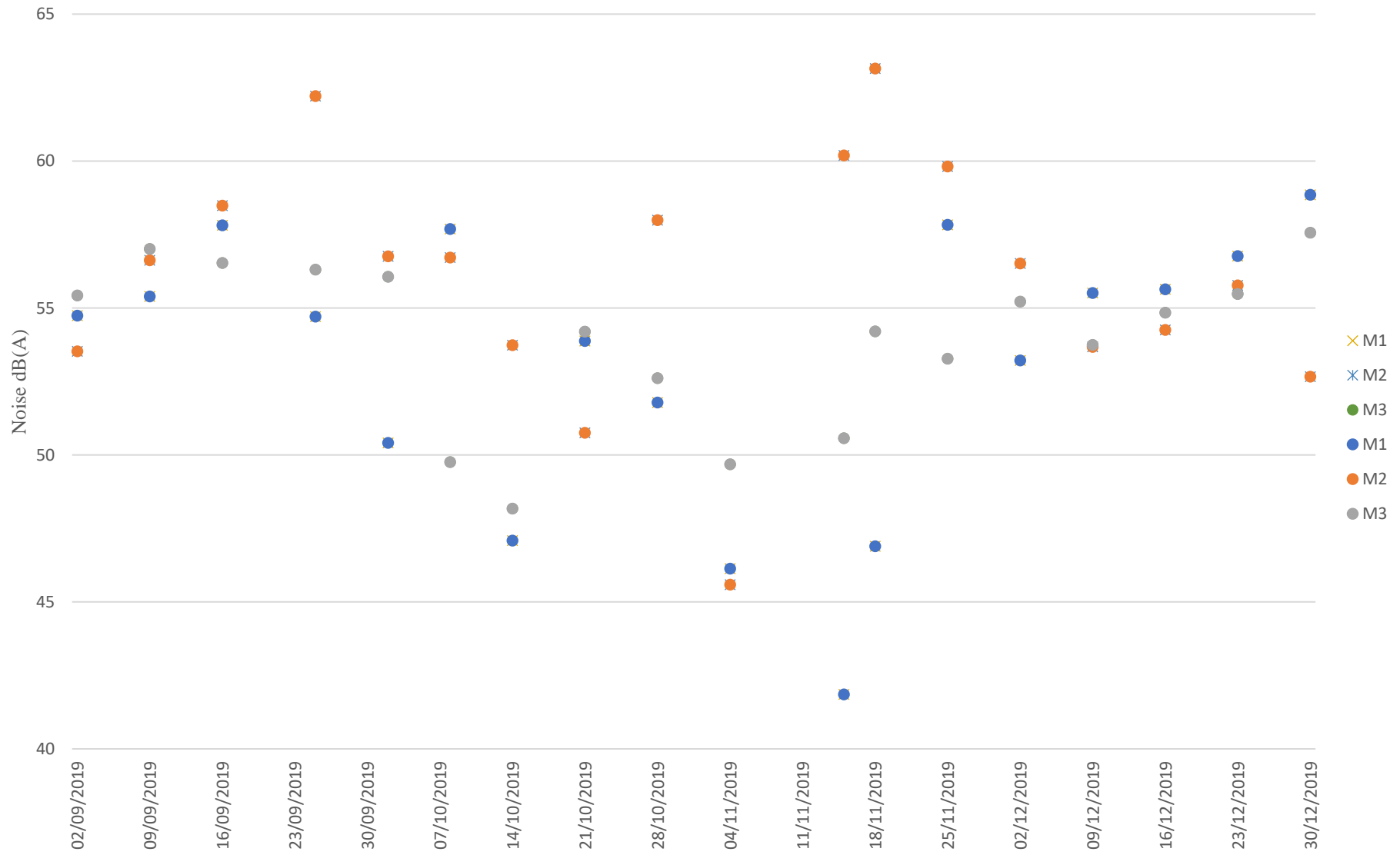


Appendix D Noise Monitoring Data Trending

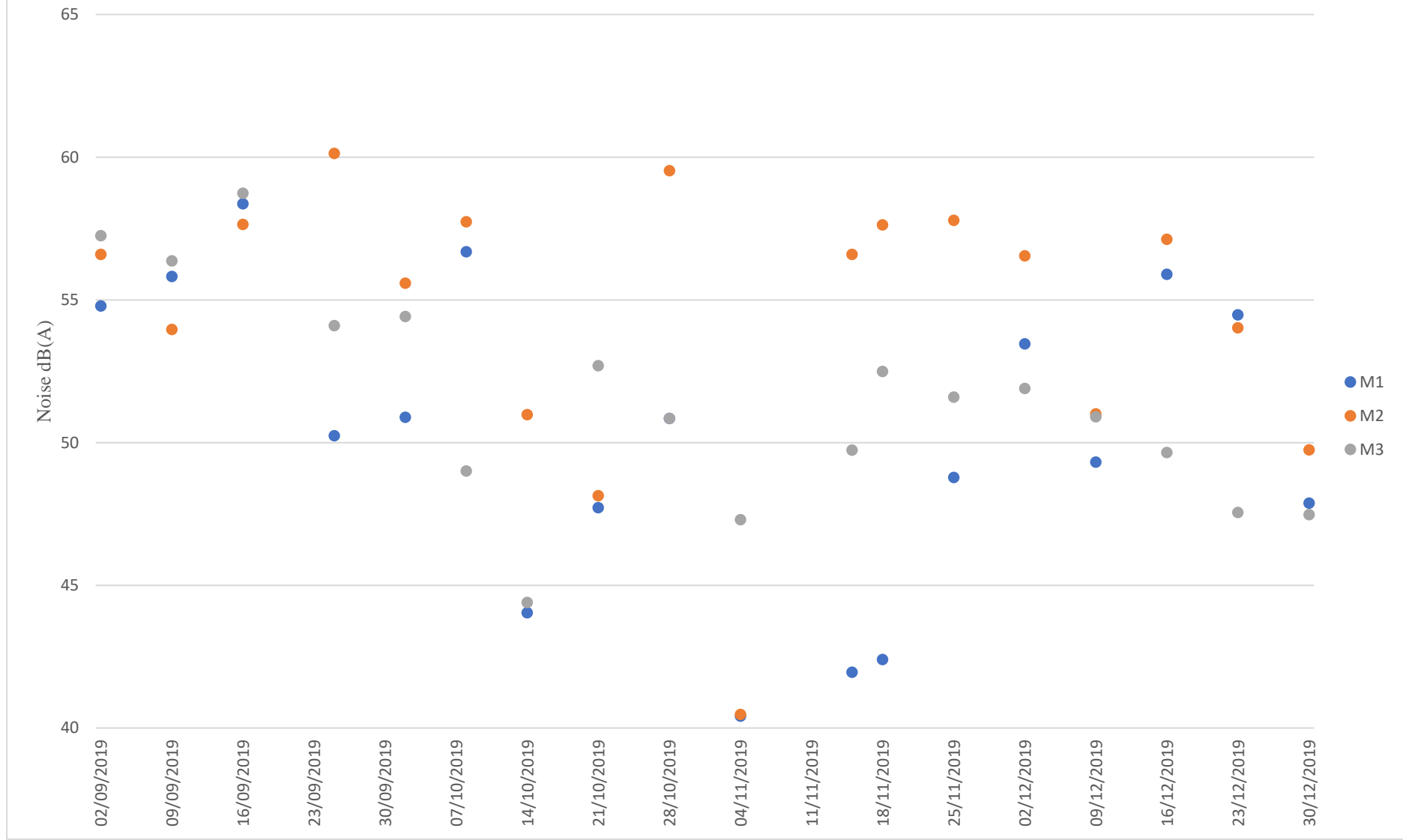
M1, M2, M3 Leq 30min dB(A) during Daytime (0700 - 1900hrs)



M1, M2, M3 Leq 30min dB(A) during Evening Time (1900 - 2300hrs)



M1, M2, M3 Leq 30min dB(A) during Night Time (2300 - 0700hrs)



Summary of the Construction Activities Undertaken during the Reporting Period

Location of works	Construction activities undertaken	Remarks on progress
Breakwater	<ul style="list-style-type: none"> • Sand blanket laying • DCM installation 	<ul style="list-style-type: none"> • On-going • On-going
Reclamation area	<ul style="list-style-type: none"> • Sand blanket laying 	<ul style="list-style-type: none"> • On-going
Seawall portion	<ul style="list-style-type: none"> • DCM installation • Coring for DCM cluster • Dredging • Cone penetration test • Installation of caisson 	<ul style="list-style-type: none"> • Completed • On-going • 39,172.8842 m³ of dredged sediment in bulk quantity was dumped at relevant dumping site in total up to 31 December 2019. • On-going • On-going

Location: Shek Kwu Chau Treatment & Rehabilitation Centre Hostel 1 (M1 / N_S1)

Monitoring date: 2, 8, 14, 21, 28 October 2019 (Daytime)

2&3, 8&9, 14&15, 21&22, 28&29 October 2019 (Evening & Night time)

Parameter : $L_{eq\ 30min}$ (Daytime), $L_{eq\ 5min}$ (Evening & Night time)

Noise source other than construction activities from the Project: Air-conditioning units nearby

Noise Monitoring data:

Date	Start time		End time	Weather	$L_{eq\ 30min}$ dB(A) / $L_{eq\ 5min}$ dB(A)	Sound Level Meter Used	Calibrator Used
2 Oct 2019	16:01	-	16:31	Sunny	45.0	XL2 (Serial No. A2A-13548-E0)	SV33B (No. 83042)
2 Oct 2019	19:51	-	19:56	Fine	46.0	XL2 (Serial No. A2A-13548-E0)	SV33B (No. 83042)
	21:51	-	21:56		52.3		
	22:51	-	22:56		50.8		
3 Oct 2019	00:51	-	00:56	Fine	51.7	XL2 (Serial No. A2A-13548-E0)	SV33B (No. 83042)
	02:51	-	02:56		52.0		
	03:51	-	03:56		47.9		
8 Oct 2019	16:33	-	17:03	Sunny	63.1	XL2 (Serial No. A2A-13548-E0)	SV33B (No. 83042)
8 Oct 2019	19:33	-	19:38	Fine	58.0	XL2 (Serial No. A2A-13548-E0)	SV33B (No. 83042)
	21:33	-	21:38		58.7		
	22:33	-	22:38		55.9		
9 Oct 2019	00:33	-	00:38	Fine	57.5	XL2 (Serial No. A2A-13548-E0)	SV33B (No. 83042)
	01:33	-	01:38		56.6		
	03:33	-	03:38		55.8		
14 Oct 2019	16:26	-	16:56	Sunny	50.9	XL2 (Serial No. A2A-13661-E0)	SV33B (No. 83042)
14 Oct 2019	19:26	-	19:31	Fine	46.6	XL2 (Serial No. A2A-13661-E0)	SV33B (No. 83042)
	21:26	-	21:31		46.5		
	22:26	-	22:31		48.0		
15 Oct 2019	00:26	-	00:31	Fine	44.2	XL2 (Serial No. A2A-13661-E0)	SV33B (No. 83042)
	02:26	-	02:31		43.9		
	03:26	-	03:31		44.0		

Date	Start time		End time	Weather	L_{eq 30min} dB(A) / L_{eq 5min} dB(A)	Sound Level Meter Used	Calibrator Used
21 Oct 2019	16:32	-	17:02	Sunny	56.2	XL2 (Serial No. A2A-13661-E0)	SV33B (No. 83042)
21 Oct 2019	19:32	-	19:37	Fine	53.6	XL2 (Serial No. A2A-13661-E0)	SV33B (No. 83042)
	21:32	-	21:37		54.7		
	22:32	-	22:37		53.2		
22 Oct 2019	00:32	-	00:37	Fine	49.2	XL2 (Serial No. A2A-13661-E0)	SV33B (No. 83042)
	02:32	-	02:37		47.5		
	03:32	-	03:37		45.8		
28 Oct 2019	16:33	-	17:03	Sunny	55.8	XL2 (Serial No. A2A-13661-E0)	SV33B (No. 83042)
28 Oct 2019	19:33	-	19:38	Fine	52.0	XL2 (Serial No. A2A-13661-E0)	SV33B (No. 83042)
	21:33	-	21:38		50.8		
	22:33	-	22:38		52.4		
29 Oct 2019	00:33	-	00:38	Fine	51.3	XL2 (Serial No. A2A-13661-E0)	SV33B (No. 83042)
	02:33	-	02:38		51.6		
	03:33	-	03:38		49.3		

Location: Shek Kwu Chau Treatment & Rehabilitation Centre Hostel 1 (M1 / N_S1)

Monitoring date: 4, 15, 18, 25 November 2019 (Daytime)
 4&5, 15&16, 18&19, 25&26 November 2019 (Evening & Night time)

Parameter : $L_{eq\ 30min}$ (Daytime), $L_{eq\ 5min}$ (Evening & Night time)

Noise source other than construction activities from the Project: Nil

Noise Monitoring data:

Date	Start time		End time	Weather	$L_{eq\ 30min}$ dB(A) / $L_{eq\ 5min}$ dB(A)	Sound Level Meter Used	Calibrator Used
4 Nov 2019	16:01	-	16:31	Sunny	46.2	XL2 (Serial No. A2A-13548-E0)	SV33B (No. 83042)
4 Nov 2019	19:31	-	19:36	Fine	38.5	XL2 (Serial No. A2A-13548-E0)	SV33B (No. 83042)
	20:31	-	20:36		46.7		
	21:31	-	21:36		48.4		
5 Nov 2019	1:31	-	01:36	Fine	41.2	XL2 (Serial No. A2A-13548-E0)	SV33B (No. 83042)
	2:31	-	02:36		39.7		
	4:31	-	04:36		40.2		
15 Nov 2019	16:08	-	16:38	Sunny	42.8	XL2 (Serial No. A2A-13548-E0)	SV33B (No. 83042)
15 Nov 2019	19:38	-	19:43	Fine	44.4	XL2 (Serial No. A2A-13548-E0)	SV33B (No. 83042)
	20:38	-	20:43		39.8		
	21:38	-	21:43		39.9		
16 Nov 2019	1:38	-	01:43	Fine	44.6	XL2 (Serial No. A2A-13548-E0)	SV33B (No. 83042)
	2:38	-	02:43		39.7		
	4:38	-	04:43		39.5		
18 Nov 2019	16:03	-	16:33	Sunny	45.2	XL2 (Serial No. A2A-13548-E0)	SV33B (No. 83042)
18 Nov 2019	19:33	-	19:38	Fine	45.8	XL2 (Serial No. A2A-13548-E0)	SV33B (No. 83042)
	20:33	-	20:38		47.4		
	21:33	-	21:38		47.3		
19 Nov 2019	1:33	-	01:38	Fine	44.9	XL2 (Serial No. A2A-13548-E0)	SV33B (No. 83042)
	2:33	-	02:38		40.9		
	4:33	-	04:38		39.5		

Date	Start time		End time	Weather	L_{eq 30min} dB(A) / L_{eq 5min} dB(A)	Sound Level Meter Used	Calibrator Used
25 Nov 2019	16:03	-	16:33	Sunny	59.7	XL2 (Serial No. A2A-13548-E0)	SV33B (No. 83042)
25 Nov 2019	19:08	-	19:13	Fine	58.9	XL2 (Serial No. A2A-13548-E0)	SV33B (No. 83042)
	20:08	-	20:13		56.7		
	21:08	-	21:13		57.6		
26 Nov 2019	1:08	-	01:13	Fine	48.4	XL2 (Serial No. A2A-13548-E0)	SV33B (No. 83042)
	3:08	-	03:13		48.7		
	5:08	-	05:13		49.2		

Location: Shek Kwu Chau Treatment & Rehabilitation Centre Hostel 1 (M1 / N_S1)

Monitoring date: 2, 9, 16, 23 & 30 December 2019 (Daytime)
 2&3, 9&10, 16&17, 23&24, 30&31 December 2019 (Evening & Night time)

Parameter : $L_{eq\ 30min}$ (Daytime), $L_{eq\ 5min}$ (Evening & Night time)

Noise source other than construction activities from the Project: Nil

Noise Monitoring data:

Date	Start time		End time	Weather	$L_{eq\ 30min}$ dB(A) / $L_{eq\ 5min}$ dB(A)	Sound Level Meter Used	Calibrator Used
2 Dec 2019	16:07	-	16:37	Sunny	59.3	XL2 (Serial No. A2A-13548-E0)	SV33B (No. 83042)
2 Dec 2019	19:12	-	19:17	Fine	52.3	XL2 (Serial No. A2A-13548-E0)	SV33B (No. 83042)
	20:12	-	20:17		55.2		
	21:12	-	21:17		51.1		
3 Dec 2019	1:12	-	01:17	Fine	47.3	XL2 (Serial No. A2A-13548-E0)	SV33B (No. 83042)
	3:12	-	03:17		51.6		
	5:12	-	05:17		56.1		
9 Dec 2019	16:04	-	16:34	Sunny	55.4	XL2 (Serial No. A2A-13548-E0)	SV33B (No. 83042)
9 Dec 2019	19:14	-	19:19	Fine	53.4	XL2 (Serial No. A2A-13548-E0)	SV33B (No. 83042)
	20:14	-	20:19		53.9		
	21:14	-	21:19		57.8		
10 Dec 2019	1:14	-	01:19	Fine	50.4	XL2 (Serial No. A2A-13548-E0)	SV33B (No. 83042)
	3:14	-	03:19		47.9		
	5:14	-	05:19		49.3		
16 Dec 2019	16:15	-	16:45	Sunny	59.5	XL2 (Serial No. A2A-13548-E0)	SV33B (No. 83042)
16 Dec 2019	19:15	-	19:20	Fine	53.5	XL2 (Serial No. A2A-13548-E0)	SV33B (No. 83042)
	20:15	-	20:20		56.1		
	21:15	-	21:20		56.7		
17 Dec 2019	1:15	-	01:20	Fine	56.7	XL2 (Serial No. A2A-13548-E0)	SV33B (No. 83042)
	3:15	-	03:20		56.2		
	5:15	-	05:20		54.5		

Date	Start time		End time	Weather	$L_{eq\ 30min\ dB(A)} / L_{eq\ 5min\ dB(A)}$	Sound Level Meter Used	Calibrator Used
23 Dec 2019	16:14	-	16:44	Sunny	57.3	XL2 (Serial No. A2A-13548-E0)	SV33B (No. 83042)
23 Dec 2019	19:14	-	19:19	Fine	57.5	XL2 (Serial No. A2A-13548-E0)	SV33B (No. 83042)
	20:14	-	20:19		56.4		
	21:14	-	21:19		56.3		
24 Dec 2019	1:14	-	01:19	Fine	57.3	XL2 (Serial No. A2A-13548-E0)	SV33B (No. 83042)
	3:14	-	03:19		52.7		
	5:14	-	05:19		50.7		
30 Dec 2019	16:10	-	16:40	Sunny	56.7	XL2 (Serial No. A2A-13548-E0)	SV33B (No. 83042)
30 Dec 2019	19:10	-	19:15	Fine	58.0	XL2 (Serial No. A2A-13548-E0)	SV33B (No. 83042)
	20:10	-	20:15		59.6		
	21:10	-	21:15		58.8		
31 Dec 2019	1:10	-	01:15	Fine	47.5	XL2 (Serial No. A2A-13548-E0)	SV33B (No. 83042)
	3:10	-	03:15		47.9		
	5:10	-	05:15		48.2		

Location: Shek Kwu Chau Treatment & Rehabilitation Centre Hostel 2 (M2 / N_S2)

Monitoring date: 2, 8, 14, 21, 28 October 2019 (Daytime)

2&3, 8&9, 14&15, 21&22, 28&29 October 2019 (Evening & Night time)

Parameter : $L_{eq\ 30min}$ (Daytime), $L_{eq\ 5min}$ (Evening & Night time)

Noise source other than construction activities from the Project: Nil

Noise Monitoring data:

Date	Start time		End time	Weather	$L_{eq\ 30min}$ dB(A) / $L_{eq\ 5min}$ dB(A)	Sound Level Meter Used	Calibrator Used
2 Oct 2019	16:36	-	17:06	Sunny	59.7	XL2 (Serial No. A2A-13661-E0)	SV33B (No. 83042)
2 Oct 2019	19:56	-	20:01	Fine	57.3	XL2 (Serial No. A2A-13661-E0)	SV33B (No. 83042)
	21:56	-	22:01		56.1		
	22:36	-	22:41		56.8		
3 Oct 2019	00:36	-	00:41	Fine	55.4	XL2 (Serial No. A2A-13661-E0)	SV33B (No. 83042)
	01:36	-	01:41		54.8		
	03:36	-	03:41		56.4		
8 Oct 2019	16:26	-	16:56	Sunny	58.8	XL2 (Serial No. A2A-13661-E0)	SV33B (No. 83042)
8 Oct 2019	19:26	-	19:31	Fine	55.9	XL2 (Serial No. A2A-13661-E0)	SV33B (No. 83042)
	21:26	-	21:31		57.5		
	22:26	-	22:31		56.6		
9 Oct 2019	00:26	-	00:31	Fine	55.8	XL2 (Serial No. A2A-13661-E0)	SV33B (No. 83042)
	01:26	-	01:31		58.2		
	03:26	-	03:31		58.7		
14 Oct 2019	16:25	-	16:55	Sunny	53.2	XL2 (Serial No. A2A-13548-E0)	SV33B (No. 83042)
14 Oct 2019	19:25	-	19:30	Fine	54.7	XL2 (Serial No. A2A-13548-E0)	SV33B (No. 83042)
	21:25	-	21:30		51.4		
	22:25	-	22:30		54.4		
15 Oct 2019	00:25	-	00:30	Fine	50.8	XL2 (Serial No. A2A-13548-E0)	SV33B (No. 83042)
	02:25	-	02:30		50.2		
	03:25	-	03:30		51.8		

Date	Start time		End time	Weather	L_{eq 30min} dB(A) / L_{eq 5min} dB(A)	Sound Level Meter Used	Calibrator Used
21 Oct 2019	16:32	-	17:02	Sunny	49.8	XL2 (Serial No. A2A-13548-E0)	SV33B (No. 83042)
21 Oct 2019	19:32	-	19:37	Fine	52.2	XL2 (Serial No. A2A-13548-E0)	SV33B (No. 83042)
	21:32	-	21:37		51.3		
	22:32	-	22:37		47.5		
22 Oct 2019	00:32	-	00:37	Fine	48.0	XL2 (Serial No. A2A-13548-E0)	SV33B (No. 83042)
	02:32	-	02:37		47.9		
	03:32	-	03:37		48.5		
28 Oct 2019	16:32	-	17:02	Sunny	62.2	XL2 (Serial No. A2A-13548-E0)	SV33B (No. 83042)
28 Oct 2019	19:32	-	19:37	Fine	59.1	XL2 (Serial No. A2A-13548-E0)	SV33B (No. 83042)
	21:32	-	21:37		49.9		
	22:32	-	22:37		59.9		
29 Oct 2019	00:32	-	00:37	Fine	49.5	XL2 (Serial No. A2A-13548-E0)	SV33B (No. 83042)
	02:32	-	02:37		58.9		
	03:32	-	03:37		60.1		

Location: Shek Kwu Chau Treatment & Rehabilitation Centre Hostel 2 (M2 / N_S2)

Monitoring date: 4, 15, 18, 25 November 2019 (Daytime)
 4&5, 15&16, 18&19, 25&26 November 2019 (Evening & Night time)

Parameter : $L_{eq\ 30min}$ (Daytime), $L_{eq\ 5min}$ (Evening & Night time)

Noise source other than construction activities from the Project: Nil

Noise Monitoring data:

Date	Start time		End time	Weather	$L_{eq\ 30min}$ dB(A) / $L_{eq\ 5min}$ dB(A)	Sound Level Meter Used	Calibrator Used
4 Nov 2019	16:06	-	16:36	Sunny	41.7	XL2 (Serial No. A2A-13661-E0)	SV33B (No. 83042)
4 Nov 2019	19:36	-	19:41	Fine	40.9	XL2 (Serial No. A2A-13661-E0)	SV33B (No. 83042)
	20:36	-	20:41		46.3		
	21:36	-	21:41		47.3		
5 Nov 2019	1:36	-	01:41	Fine	41.3	XL2 (Serial No. A2A-13661-E0)	SV33B (No. 83042)
	2:36	-	02:41		39.0		
	4:36	-	04:41		40.8		
15 Nov 2019	16:07	-	16:37	Sunny	60.4	XL2 (Serial No. A2A-13661-E0)	SV33B (No. 83042)
15 Nov 2019	19:32	-	19:37	Fine	60.8	XL2 (Serial No. A2A-13661-E0)	SV33B (No. 83042)
	20:32	-	20:37		59.7		
	21:32	-	21:37		60.0		
16 Nov 2019	1:32	-	01:37	Fine	58.5	XL2 (Serial No. A2A-13661-E0)	SV33B (No. 83042)
	2:32	-	02:37		55.2		
	4:32	-	04:37		55.2		
18 Nov 2019	16:09	-	16:39	Sunny	61.8	XL2 (Serial No. A2A-13661-E0)	SV33B (No. 83042)
18 Nov 2019	19:39	-	19:44	Fine	65.1	XL2 (Serial No. A2A-13661-E0)	SV33B (No. 83042)
	20:39	-	20:44		61.8		
	21:39	-	21:44		61.6		
19 Nov 2019	1:39	-	01:44	Fine	59.7	XL2 (Serial No. A2A-13661-E0)	SV33B (No. 83042)
	2:39	-	02:44		57.0		
	4:39	-	04:44		54.8		

Date	Start time		End time	Weather	L_{eq 30min} dB(A) / L_{eq 5min} dB(A)	Sound Level Meter Used	Calibrator Used
25 Nov 2019	16:03	-	16:33	Sunny	58.9	XL2 (Serial No. A2A-13663-E0)	SV33B (No. 83042)
25 Nov 2019	19:08	-	19:13	Fine	59.3	XL2 (Serial No. A2A-13663-E0)	SV33B (No. 83042)
	20:08	-	20:13		59.8		
	21:08	-	21:13		60.3		
26 Nov 2019	1:08	-	01:13	Fine	60.9	XL2 (Serial No. A2A-13663-E0)	SV33B (No. 83042)
	3:08	-	03:13		55.0		
	5:08	-	05:13		54.1		

Location: Shek Kwu Chau Treatment & Rehabilitation Centre Hostel 2 (M2 / N_S2)

Monitoring date: 2, 9, 16, 23 & 30 December 2019 (Daytime)
 2&3, 9&10, 16&17, 23&24, 30&31 December 2019 (Evening & Night time)

Parameter : $L_{eq\ 30min}$ (Daytime), $L_{eq\ 5min}$ (Evening & Night time)

Noise source other than construction activities from the Project: Nil

Noise Monitoring data:

Date	Start time		End time	Weather	$L_{eq\ 30min}$ dB(A) / $L_{eq\ 5min}$ dB(A)	Sound Level Meter Used	Calibrator Used
2 Dec 2019	16:02	-	16:32	Sunny	57.3	XL2 (Serial No. A2A-13663-E0)	SV33B (No. 83042)
2 Dec 2019	19:12	-	19:17	Fine	54.8	XL2 (Serial No. A2A-13663-E0)	SV33B (No. 83042)
	20:12	-	20:17		56.0		
	21:12	-	21:17		58.1		
3 Dec 2019	1:12	-	01:17	Fine	51.0	XL2 (Serial No. A2A-13663-E0)	SV33B (No. 83042)
	3:12	-	03:17		53.1		
	5:12	-	05:17		60.1		
9 Dec 2019	16:06	-	16:36	Sunny	56.3	XL2 (Serial No. A2A-13661-E0)	SV33B (No. 83042)
9 Dec 2019	19:16	-	19:21	Fine	53.3	XL2 (Serial No. A2A-13661-E0)	SV33B (No. 83042)
	20:16	-	20:21		54.0		
	21:16	-	21:21		53.7		
10 Dec 2019	1:16	-	01:21	Fine	50.2	XL2 (Serial No. A2A-13661-E0)	SV33B (No. 83042)
	3:16	-	03:21		49.8		
	5:16	-	05:21		52.5		
16 Dec 2019	16:15	-	16:45	Sunny	58.8	XL2 (Serial No. A2A-13663-E0)	SV33B (No. 83042)
16 Dec 2019	19:15	-	19:20	Fine	53.5	XL2 (Serial No. A2A-13663-E0)	SV33B (No. 83042)
	20:15	-	20:20		55.1		
	21:15	-	21:20		54.0		
17 Dec 2019	1:15	-	01:20	Fine	56.1	XL2 (Serial No. A2A-13663-E0)	SV33B (No. 83042)
	3:15	-	03:20		58.9		
	5:15	-	05:20		55.6		

Date	Start time		End time	Weather	L_{eq 30min} dB(A) / L_{eq 5min} dB(A)	Sound Level Meter Used	Calibrator Used
23 Dec 2019	16:19	-	16:49	Sunny	58.6	XL2 (Serial No. A2A-13661-E0)	SV33B (No. 83042)
23 Dec 2019	19:19	-	19:24	Fine	56.7	XL2 (Serial No. A2A-13661-E0)	SV33B (No. 83042)
	20:19	-	20:24		55.6		
	21:19	-	21:24		54.8		
24 Dec 2019	1:19	-	01:24	Fine	56.6	XL2 (Serial No. A2A-13661-E0)	SV33B (No. 83042)
	3:19	-	03:24		52.8		
	5:19	-	05:24		50.4		
30 Dec 2019	16:07	-	16:37	Sunny	53.4	XL2 (Serial No. A2A-13661-E0)	SV33B (No. 83042)
30 Dec 2019	19:07	-	19:12	Fine	51.4	XL2 (Serial No. A2A-13661-E0)	SV33B (No. 83042)
	20:07	-	20:12		53.7		
	21:07	-	21:12		52.6		
31 Dec 2019	1:07	-	01:12	Fine	49.5	XL2 (Serial No. A2A-13661-E0)	SV33B (No. 83042)
	3:07	-	03:12		50.5		
	5:07	-	05:12		49.1		

Location: Shek Kwu Chau Treatment & Rehabilitation Centre Hostel 3 (M3 / N_S3)

Monitoring date: 2, 8, 14, 21, 28 October 2019 (Daytime)

2&3, 8&9, 14&15, 21&22, 28&29 October 2019 (Evening & Night time)

Parameter : $L_{eq\ 30min}$ (Daytime), $L_{eq\ 5min}$ (Evening & Night time)

Noise source other than construction activities from the Project: Air-conditioning units nearby, dog barking

Noise Monitoring data:

Date	Start time		End time	Weather	$L_{eq\ 30min}$ dB(A) / $L_{eq\ 5min}$ dB(A)	Sound Level Meter Used	Calibrator Used
2 Oct 2019	16:33	-	17:03	Sunny	58.9	SVAN 971 (Serial No. 77731)	SV33B (No. 83042)
2 Oct 2019	19:33	-	19:38	Fine	55.4	SVAN 971 (Serial No. 77731)	SV33B (No. 83042)
	21:33	-	21:38		55.6		
	22:33	-	22:38		57.0		
3 Oct 2019	00:33	-	00:38	Fine	55.9	SVAN 971 (Serial No. 77731)	SV33B (No. 83042)
	02:33	-	02:38		52.9		
	03:33	-	03:38		53.9		
8 Oct 2019	16:36	-	17:06	Sunny	52.2	SVAN 971 (Serial No. 77731)	SV33B (No. 83042)
8 Oct 2019	19:36	-	19:41	Fine	51.6	SVAN 971 (Serial No. 77731)	SV33B (No. 83042)
	21:36	-	21:41		48.9		
	22:36	-	22:41		47.9		
9 Oct 2019	00:36	-	00:41	Fine	47.6	SVAN 971 (Serial No. 77731)	SV33B (No. 83042)
	01:36	-	01:41		51.0		
	03:36	-	03:41		47.4		
14 Oct 2019	16:29	-	17:59	Sunny	50.6	SVAN 971 (Serial No. 77731)	SV33B (No. 83042)
14 Oct 2019	19:29	-	19:34	Fine	48.9	SVAN 971 (Serial No. 77731)	SV33B (No. 83042)
	21:29	-	21:34		48.1		
	22:29	-	22:34		47.4		
15 Oct 2019	00:29	-	00:34	Fine	44.5	SVAN 971 (Serial No. 77731)	SV33B (No. 83042)
	02:29	-	02:34		44.2		
	03:29	-	03:34		44.5		

Date	Start time		End time	Weather	L_{eq 30min} dB(A) / L_{eq 5min} dB(A)	Sound Level Meter Used	Calibrator Used
21 Oct 2019	16:30	-	17:00	Sunny	54.0	SVAN 971 (Serial No. 77731)	SV33B (No. 83042)
21 Oct 2019	19:30	-	19:35	Fine	52.1	SVAN 971 (Serial No. 77731)	SV33B (No. 83042)
	21:30	-	21:35		55.2		
	22:30	-	22:35		54.7		
22 Oct 2019	00:30	-	00:35	Fine	52.3	SVAN 971 (Serial No. 77731)	SV33B (No. 83042)
	02:30	-	02:35		52.3		
	03:30	-	03:35		53.4		
28 Oct 2019	16:34	-	17:04	Sunny	55.9	SVAN 971 (Serial No. 77731)	SV33B (No. 83042)
28 Oct 2019	19:34	-	19:39	Fine	52.3	SVAN 971 (Serial No. 77731)	SV33B (No. 83042)
	21:34	-	21:39		52.4		
	22:34	-	22:39		53.1		
29 Oct 2019	00:34	-	00:39	Fine	52.3	SVAN 971 (Serial No. 77731)	SV33B (No. 83042)
	02:34	-	02:39		50.4		
	03:34	-	03:39		49.3		

Location: Shek Kwu Chau Treatment & Rehabilitation Centre Hostel 3 (M3 / N_S3)

Monitoring date: 4, 15, 18, 25 November 2019 (Daytime)
 4&5, 15&16, 18&19, 25&26 November 2019 (Evening & Night time)

Parameter : $L_{eq\ 30min}$ (Daytime), $L_{eq\ 5min}$ (Evening & Night time)

Noise source other than construction activities from the Project: Air-conditioning units nearby, dog barking

Noise Monitoring data:

Date	Start time		End time	Weather	$L_{eq\ 30min}$ dB(A) / $L_{eq\ 5min}$ dB(A)	Sound Level Meter Used	Calibrator Used
4 Nov 2019	16:05	-	16:35	Sunny	55.5	SVAN 971 (Serial No. 77731)	SV33B (No. 83042)
4 Nov 2019	19:35	-	19:40	Fine	49.7	SVAN 971 (Serial No. 77731)	SV33B (No. 83042)
	20:35	-	20:40		50.6		
	21:35	-	21:40		48.5		
5 Nov 2019	1:35	-	01:40	Fine	46.8	SVAN 971 (Serial No. 77731)	SV33B (No. 83042)
	2:35	-	02:40		48.0		
	4:35	-	04:40		47.0		
15 Nov 2019	16:06	-	16:36	Sunny	51.4	SVAN 971 (Serial No. 77731)	SV33B (No. 83042)
15 Nov 2019	19:36	-	19:41	Fine	50.9	SVAN 971 (Serial No. 77731)	SV33B (No. 83042)
	20:36	-	20:41		50.3		
	21:36	-	21:41		50.5		
16 Nov 2019	1:36	-	01:41	Fine	49.5	SVAN 971 (Serial No. 77731)	SV33B (No. 83042)
	2:36	-	02:41		50.7		
	4:36	-	04:41		48.8		
18 Nov 2019	16:09	-	16:39	Sunny	54.4	SVAN 971 (Serial No. 77731)	SV33B (No. 83042)
18 Nov 2019	19:39	-	19:44	Fine	53.4	SVAN 971 (Serial No. 77731)	SV33B (No. 83042)
	20:39	-	20:44		53.5		
	21:39	-	21:44		55.4		
19 Nov 2019	1:39	-	01:44	Fine	52.5	SVAN 971 (Serial No. 77731)	SV33B (No. 83042)
	2:39	-	02:44		53.0		
	4:39	-	04:44		51.9		

Date	Start time		End time	Weather	L_{eq 30min} dB(A) / L_{eq 5min} dB(A)	Sound Level Meter Used	Calibrator Used
25 Nov 2019	16:04	-	16:34	Sunny	54.9	SVAN 971 (Serial No. 77731)	SV33B (No. 83042)
25 Nov 2019	19:09	-	19:14	Fine	54.0	SVAN 971 (Serial No. 77731)	SV33B (No. 83042)
	20:09	-	20:14		52.1		
	21:09	-	21:14		53.5		
26 Nov 2019	1:09	-	01:14	Fine	52.5	SVAN 971 (Serial No. 77731)	SV33B (No. 83042)
	3:09	-	03:14		51.4		
	5:09	-	05:14		50.7		

Location: Shek Kwu Chau Treatment & Rehabilitation Centre Hostel 3 (M3 / N_S3)

Monitoring date: 2, 9, 16, 23 & 30 December 2019 (Daytime)

2&3, 9&10, 16&17, 23&24, 30&31 December 2019 (Evening & Night time)

Parameter : $L_{eq\ 30min}$ (Daytime), $L_{eq\ 5min}$ (Evening & Night time)

Noise source other than construction activities from the Project: Nil

Noise Monitoring data:

Date	Start time		End time	Weather	$L_{eq\ 30min}$ dB(A) / $L_{eq\ 5min}$ dB(A)	Sound Level Meter Used	Calibrator Used
2 Dec 2019	16:04	-	16:34	Sunny	58.0	SVAN 971 (Serial No. 77731)	SV33B (No. 83042)
2 Dec 2019	19:14	-	19:19	Fine	52.2	SVAN 971 (Serial No. 77731)	SV33B (No. 83042)
	20:14	-	20:19		54.1		
	21:14	-	21:19		57.6		
3 Dec 2019	1:14	-	01:19	Fine	54.2	SVAN 971 (Serial No. 77731)	SV33B (No. 83042)
	3:14	-	03:19		48.6		
	5:14	-	05:19		51.1		
9 Dec 2019	16:07	-	16:37	Sunny	55.8	SVAN 971 (Serial No. 77731)	SV33B (No. 83042)
9 Dec 2019	19:17	-	19:22	Fine	51.2	SVAN 971 (Serial No. 77731)	SV33B (No. 83042)
	20:17	-	20:22		54.9		
	21:17	-	21:22		54.3		
10 Dec 2019	1:17	-	01:22	Fine	48.8	SVAN 971 (Serial No. 77731)	SV33B (No. 83042)
	3:17	-	03:22		51.3		
	5:17	-	05:22		52.0		
16 Dec 2019	16:14	-	16:44	Sunny	57.4	SVAN 971 (Serial No. 77731)	SV33B (No. 83042)
16 Dec 2019	19:14	-	19:19	Fine	55.1	SVAN 971 (Serial No. 77731)	SV33B (No. 83042)
	20:14	-	20:19		56.7		
	21:14	-	21:19		50.9		
17 Dec 2019	1:14	-	01:19	Fine	47.4	SVAN 971 (Serial No. 77731)	SV33B (No. 83042)
	3:14	-	03:19		51.8		
	5:14	-	05:19		48.5		

Date	Start time		End time	Weather	L_{eq 30min} dB(A) / L_{eq 5min} dB(A)	Sound Level Meter Used	Calibrator Used
23 Dec 2019	16:07	-	16:37	Sunny	51.6	SVAN 971 (Serial No. 77731)	SV33B (No. 83042)
23 Dec 2019	19:07	-	19:12	Fine	56.3	SVAN 971 (Serial No. 77731)	SV33B (No. 83042)
	20:07	-	20:12		57.0		
	21:07	-	21:12		51.2		
24 Dec 2019	1:07	-	01:12	Fine	49.0	SVAN 971 (Serial No. 77731)	SV33B (No. 83042)
	3:07	-	03:12		47.4		
	5:07	-	05:12		45.6		