

Appendix A Master Programme

Activity ID	Activity Name	Original Duration	Remaining Duration	Activity % Complete	Current Start	Current Finish	Late Start	Late Finish	Total Float	M67 Remarks	2023			
											Jun 67	Jul 66	Aug 69	Sep 70
Programme for Design and Construction Works WP6H-M67 (for Submission)														
Key Dates														
0 0 30-Jun-23 30-Jun-23 01-Jun-23 01-Jun-23 -28														
Dates of Site Possessions														
0 0 30-Jun-23 30-Jun-23 01-Jun-23 01-Jun-23 -28														
01-1160	Possession of Portion 3	0	0	0%		30-Jun-23		01-Jun-23	-28		◆ Possession of Portion 3,			
01-1170	Possession of Portion 4	0	0	0%		30-Jun-23		01-Jun-23	-28		◆ Possession of Portion 4,			
01-1180	Possession of Portion 5	0	0	0%		30-Jun-23		01-Jun-23	-28		◆ Possession of Portion 5,			
Contract Preliminaries														
90 90 30-Jun-23 27-Sep-23 02-Jun-23 30-Aug-23 -28														
Establishment of Environmental Monitoring Stations														
90 90 30-Jun-23 27-Sep-23 02-Jun-23 30-Aug-23 -28														
02-1030	Establishment of Air Quality Monitoring Station at Portion 3 (12m Prior to T&C)	90	90	0%	30-Jun-23	27-Sep-23		02-Jun-23	30-Aug-23	-28	30-Jun-23			
02-1040	Establishment of Air Quality Monitoring Station at Portion 4 (12m Prior to T&C)	90	90	0%	30-Jun-23	27-Sep-23		02-Jun-23	30-Aug-23	-28	30-Jun-23			
02-1050	Establishment of Air Quality Monitoring Station at Portion 5 (12m Prior to T&C)	90	90	0%	30-Jun-23	27-Sep-23		02-Jun-23	30-Aug-23	-28	30-Jun-23			
Licence/Permit Applications														
1815 263 07-Mar-19 A 18-Mar-24 01-Apr-23 12-Jul-25 481														
License/Permit for Construction														
1794 58 07-Mar-19 A 26-Aug-23 09-May-24 12-Jul-25 686														
03-1080	CNP for Percussive Piling Works	613	0	100%	31-Aug-21 A	30-Jun-23		09-May-24	09-May-24	315	30-Jun-23, CNP for Percussive Piling Works, CNP for Percussive Piling Works, 30-Jun-23			
03-1370_1(M34)	Landscape and Visual Plan	180	24	86.67%	24-Dec-22 A	23-Jul-23		21-Dec-24	13-Jan-25	540	23-Jul-23, Landscape and Visual Plan, Landscape and Visual P			
03-1360(2)	CNP for 24Hrs	1634	58	96.45%	07-Mar-19 A	26-Aug-23		16-May-25	12-Jul-25	686	26-Aug-23, CNP for 24Hrs, CN			
DG Licence														
30 30 30-Jul-23 28-Aug-23 17-Aug-23 15-Sep-23 18														
Day Tank & Fuel Oil Storage (Cat 5)														
30 30 30-Jul-23 28-Aug-23 17-Aug-23 15-Sep-23 18														
03-1400	General Building Plans and FSI Provision Design Submission to FSD (Cat 5)	30	30	0%	30-Jul-23	28-Aug-23		17-Aug-23	15-Sep-23	18	30-Jul-23 28-Aug-23, General Building			
Fire Services Installations (FSI) Certificate														
0 0 29-Jul-23 29-Jul-23 16-Aug-23 16-Aug-23 18														
Fire Services Installations Certificate Inspection														
0 0 29-Jul-23 29-Jul-23 16-Aug-23 16-Aug-23 18														
03-1555-1(5a)	Approval of General Building Plans and FSI Provision Design Submission	0	0	0%	29-Jul-23	29-Jul-23		16-Aug-23	16-Aug-23	18	◆ Approval of General Building Plans and FSI Provision Des			
Air Pollution Control (Specified Processes) License														
300 263 24-Apr-23 A 18-Mar-24 31-May-23 17-Feb-24 -30														
03-1750(3)	SP License Application Submissions and review by EPD	300	263	12.33%	24-Apr-23 A	18-Mar-24		31-May-23	17-Feb-24	-30				
Boilers and Pressure Vessels License														
312 104 29-Mar-22 A 11-Oct-23 01-Apr-23 13-Oct-23 2														
03-1900(3)	Completion of Boiler off-site inspection before delivery	60	60	0%	13-Feb-23 A	11-Oct-23		01-Apr-23	30-May-23	-134				
03-1890(3)	Completion of Boiler off-site fabrication	180	30	83.33%	29-Mar-22 A	29-Jul-23		14-Sep-23	13-Oct-23	76	29-Jul-23, Completion of Boiler off-site fabrication, Compl			
General Submissions														
1735 60 27-Nov-18 A 28-Aug-23 30-Jun-23 02-Jan-24 127														
Contractor's Plans Submission and Approval														
1735 60 27-Nov-18 A 28-Aug-23 30-Jun-23 02-Jan-24 127														
04-1450(1)	Asset Management Plan (AMP)	120	44	0%	15-Apr-23 A	12-Aug-23		30-Jun-23	12-Aug-23	0	Asset Management Plan (AMP), 12-Aug-23,			
04-1500(1)	Handback Plan (HP)	120	44	0%	15-Mar-23 A	12-Aug-23		30-Jun-23	12-Aug-23	0	Handback Plan (HP), 12-Aug-23, 12-Aug-23			
04-1400(1)	Operation Plan (OP)	240	60	75%	27-Nov-18 A	28-Aug-23		04-Nov-23	02-Jan-24	127	28-Aug-23, Operation Plan (C			
Design Submissions														
1796 120 11-Jul-18 A 27-Oct-23 12-Mar-23 12-Feb-25 474														
General Building Plan														
637 30 03-Mar-21 A 29-Jul-23 11-Jul-23 30-Jul-24 367														
04-1730	Weighbridge	135	22	5%	22-Apr-22 A	21-Jul-23		11-Jul-23	01-Aug-23	11	21-Jul-23, Weighbridge, Weighbridge, 21-Jul-23			
04-1600(M42)	Process Building & Wastewater Treatment Plant	135	30	77.78%	03-Jun-21 A	29-Jul-23		18-Jul-23	16-Aug-23	18	29-Jul-23, Process Building & Wastewater Treatment Plant			
04-1610(M42)	Turbine Hall Building	135	30	77.78%	03-Mar-21 A	29-Jul-23		18-Jul-23	16-Aug-23	18	29-Jul-23, Turbine Hall Building, Turbine Hall Building, 29-Jul-23			
04-1620(M42)	Compressor & CCCW Building	135	30	77.78%	03-Mar-21 A	29-Jul-23		18-Jul-23	16-Aug-23	18	29-Jul-23, Compressor & CCCW Building, Compressor &			
04-1630(M42)	Chimney	135	30	77.78%	03-Mar-21 A	29-Jul-23		18-Jul-23	16-Aug-23	18	29-Jul-23, Chimney, Chimney, 29-Jul-23			
04-1640(M42)	Mechanical Treatment Plant & Water Treatment Plant	135	30	77.78%	03-Jun-21 A	29-Jul-23		18-Jul-23	16-Aug-23	18	29-Jul-23, Mechanical Treatment Plant & Water Treatment			
04-1650(M42)	Reception Pavilion	135	30	77.78%	03-Jun-21 A	29-Jul-23		18-Jul-23	16-Aug-23	18	29-Jul-23, Reception Pavilion, Reception Pavilion, 29-Jul-23			
04-1660(M42)	Administration Building and Viewing Gallery	135	30	77.78%	03-Jun-21 A	29-Jul-23		18-Jul-23	16-Aug-23	18	29-Jul-23, Administration Building and Viewing Gallery, Ad			
04-1670(M42)	Elevated Drive Way and Associated Structures	135	30	77.78%	03-Mar-21 A	29-Jul-23		18-Jul-23	16-Aug-23	18	29-Jul-23, Elevated Drive Way and Associated Structures,			
04-1680(M42)	IWMF Substation	135	30	77.78%	03-Mar-21 A	29-Jul-23		18-Jul-23	16-Aug-23	18	29-Jul-23, IWMF Substation, IWMF Substation, 29-Jul-23			
04-1740	Seawater Intake Structure	60	3	0%	23-Feb-23 A	02-Jul-23		28-Jul-24	30-Jul-24	394	02-Jul-23, Seawater Intake Structure, Seawater Intake Structure, 02-Jul-23			
AIP Design Package Submissions														
1774 105 11-Jul-18 A 12-Oct-23 04-Jul-23 23-Sep-24 347														
AIP Ground Treatment, Reclamation, Seawall, Breakwater, Berth (2.2)														
424 30 31-May-21 A 29-Jul-23 24-Jul-23 26-May-24 302														
05-2980	Onshore vessel power supply system (2.2.12)	135	30	80%	31-May-21 A	29-Jul-23		24-Jul-23	22-Aug-23	24	29-Jul-23, Onshore vessel power supply system (2.2.12), C			
05-2970	Onshore crane Facility (2.2.11)	90	3	5%	11-Apr-22 A	02-Jul-23		24-May-24	26-May-24	329	02-Jul-23, Onshore crane Facility (2.2.11), Onshore crane Facility (2.2.11), 02-Jul-23			
AIP Incineration Plant Buildings (2.3)														
1729 60 04-Dec-18 A 28-Aug-23 26-Jul-23 23-Aug-24 361														
Foundation design (2.3.01)														
135 0 30-Oct-20 A 30-Jun-23 16-Aug-23 16-Aug-23 48														
05-3090	Reception Pavilion	135	0	100%	30-Oct-20 A	30-Jun-23		16-Aug-23	16-Aug-23	48	30-Jun-23, Reception Pavilion, Reception Pavilion, 30-Jun-23			
Structural design (2.3.02)														
135 30 01-Jun-21 A 29-Jul-23 06-Feb-24 06-Mar-24 221														
05-3090-1(M55)	Sky Deck	135	30	77.78%	01-Jun-21 A	29-Jul-23		06-Feb-24	06-Mar-24	221	29-Jul-23, Sky Deck, Sky Deck, 29-Jul-23			
Operation Management System (2.3.03.04)														
121 14 14-Feb-22 A 13-Jul-23 19-Dec-23 04-May-24 296														
05-2250	Design of the Air Quality Monitoring Stations (2.9.01)	60	0	5%	01-Jun-22 A	30-Jun-23		19-Dec-23	19-Dec-23	173	30-Jun-23, Design of the Air Quality Monitoring Stations (2.9.01), Design of the Air Qua			
05-3840-1(M22)	Automatic Traffic Control System (ATCS) (2.10.06.12)	90	14	5%	14-Feb-22 A	13-Jul-23		21-Apr-24	04-May-24	296	13-Jul-23, Automatic Traffic Control System (ATCS) (2.10.06.12), Automa			
Building services design (excluding fire services installation design) (2.3.06)														
1729 60 04-Dec-18 A 28-Aug-23 26-Jul-23 23-Aug-24 361														
05-1770	Vehicle & Container Wash System	60	60	0%	30-Jun-23	28-Aug-23		26-Jul-23	23-Sep-23	26	30-Jun-23 28-Aug-23, Vehicle & Contair			
05-1560	MVAC (6 Packages)	105	30	25%	02-Jan-19 A	29-Jul-23		05-Dec-23	03-Jan-24	158	29-Jul-23, MVAC (6 Packages), MVAC (6 Packages), 29-			
05-1570	Odour Control	135	30	25%	04-Dec-18 A	29-Jul-23		05-Dec-23	03-Jan-24	158	29-Jul-23, Odour Control, Odour Control, 29-Jul-23			
05-1580	Plumbing (7 Packages)	210	30	25%	31-Jan-19 A	29-Jul-23		14-Feb-24	14-Mar-24	229	29-Jul-23, Plumbing (7 Packages), Plumbing (7 Packages)			
05-1590	Drainage (7 Packages)	135	30	25%	31-Jan-19 A	29-Jul-23		14-Feb-24	14-Mar-24	229	29-Jul-23, Drainage (7 Packages), Drainage (7 Packages)			
05-1770-1(M20)	Water Cannon System	135	30	45%	31-Aug-19 A	29-Jul-23		25-Jul-24	23-Aug-24	391	29-Jul-23, Water Cannon System, Water Cannon System,			
AIP Fire services installation design (2.3.05)														
270 2 31-Oct-19 A 29-Jul-23 07-Jul-24 08-Jul-24 345														

3-Month Rolling Programme (June 2023)

■ Remaining Work ◆ Actual Milestone
■ Actual Work ◆ Critical Milestone
■ Critical Remaining Work
◆ Milestone

Activity ID	Activity Name	Original Duration	Remaining Duration	Activity % Complete	Current Start	Current Finish	Late Start	Late Finish	Total Float	M67 Remarks	2023			
											Jun 67	Jul 66	Aug 69	Sep 70
Reception Pavilion (2.3.05.06)														
05-5460(M22)	Fire Systems (2.3.05.06.01)	270	2	80%	31-Oct-19 A	29-Jul-23	07-Jul-24	08-Jul-24	345					
05-5470-1(M22)	FS schematics (2.3.05.06.03)	135	2	80%	31-Oct-19 A	29-Jul-23	07-Jul-24	08-Jul-24	345					
AIP Mechanical Treatment Plant Building (2.4)														
05-1680	Mechanical works design (2.4.04)	30	30	0%	20-Jan-23 A	29-Jul-23	09-Jul-23	07-Aug-23	9					
05-1670	Electrical and instrumentation works design (2.4.03)	30	30	5%	13-Mar-23 A	29-Jul-23	25-Jul-23	23-Aug-23	25					
Building services design (excluding fire services installation design) (2.4.06)														
05-1720	Odour Control	90	0	80%	11-Jul-18 A	30-Jun-23	03-Jan-24	03-Jan-24	188					
05-1740	Drainage	90	0	70%	10-Jan-21 A	30-Jun-23	05-Feb-24	05-Feb-24	221					
05-1700	LV and Emergency Power Distribution Design	135	30	5%	18-Jan-22 A	29-Jul-23	13-Jun-24	12-Jul-24	349					
AIP Wastewater Treatment Plant (2.5)														
Building services design (excluding fire services installation design) (2.5.06)														
05-1850	Odour Control (2.5.06.03)	105	30	80%	31-Dec-21 A	29-Jul-23	06-Feb-24	06-Mar-24	221					
05-1830	LV and Emergency Power Distribution Design (2.5.06.01)	135	30	25%	31-Jan-19 A	29-Jul-23	14-May-24	12-Jun-24	319					
AIP Water Treatment Plant Building (2.6)														
Building services design (excluding fire services installation design) (2.6.06)														
05-2000	Drainage	135	10	70%	20-Mar-22 A	09-Jul-23	27-Jan-24	05-Feb-24	211					
05-1960	Electrical Services and Lighting (2.6.06.01)	135	30	25%	30-Apr-19 A	29-Jul-23	13-Jun-24	12-Jul-24	349					
AIP Administration Building (2.7)														
Building services design (excluding fire services installation design) (2.7.05)														
05-2080	MVAC	135	0	65%	31-Oct-19 A	30-Jun-23	01-Jun-24	01-Jun-24	338					
AIP Chimney														
Building services design (excluding fire services installation design)														
05-5440(5a)	MVAC	90	30	5%	20-Sep-21 A	29-Jul-23	09-Sep-23	08-Oct-23	71					
05-5490(5a)	Building Management System (BMS)	90	0	5%	27-Oct-21 A	30-Jun-23	16-Oct-23	16-Oct-23	109					
05-5450(5a)	Plumbing	90	30	5%	20-Sep-21 A	29-Jul-23	04-Jan-24	02-Feb-24	188					
05-5460-1(5a)	Drainage	90	30	5%	20-Sep-21 A	29-Jul-23	04-Jan-24	02-Feb-24	188					
05-5430(5a)	Electrical Services and Lighting	90	30	5%	20-Sep-21 A	29-Jul-23	11-Jan-24	09-Feb-24	195					
05-5470(5a)	ELV	90	30	5%	20-Sep-21 A	29-Jul-23	11-Jan-24	09-Feb-24	195					
AIP Elevated Drive Way and Associated Structures Foundation														
Building services design (excluding fire services installation design)														
05-7090	Electrical Services and Lighting	105	30	5%	31-Dec-21 A	29-Jul-23	17-Sep-23	16-Oct-23	79					
AIP Roads and Utilities (2.10)														
Water supply system design on the Artificial Island (2.10.04)														
05-2360	Water Tanks (2.10.04.05)	60	60	0%	30-Jun-23	28-Aug-23	04-Jul-23	01-Sep-23	4					
05-2370-2(M24)	Building Services system for seawater intake (2.10.04.09)	105	30	5%	31-Oct-20 A	29-Jul-23	17-Sep-23	16-Oct-23	79					
05-2370-3(5a)	Chemical scrubber system for odour control (2.10.04.10)	105	30	5%	31-Oct-21 A	29-Jul-23	17-Sep-23	16-Oct-23	79					
Design of telecommunication and other utilities (2.10.06)														
05-2430	Site ELV Network System - Navigation aids concept / schematics (2.10.06.06)	105	0	80%	31-May-22 A	30-Jun-23	06-Nov-23	06-Nov-23	130					
05-2380	Power Distribution System concept / schematics (2.10.06.01)	135	1	5%	31-Jan-21 A	30-Jun-23	20-Jan-24	20-Jan-24	204					
Utility ducts/Pipebridges design (2.10.25)														
05-2460	Design of Pipe / Utilities Trenches concept (2.10.06.09.01)	105	30	5%	01-May-21 A	29-Jul-23	23-Oct-23	21-Nov-23	115					
05-2470	Sitewide Utilities Trenches Design (2.10.06.09.02)	105	30	5%	01-May-21 A	29-Jul-23	23-Oct-23	21-Nov-23	115					
Layout Plan for Pipe Bridge Network														
05-6010	Pipebridge B	60	30	50%	31-May-22 A	29-Jul-23	06-Aug-23	04-Sep-23	37					
AIP Architectural, Finishes and Landscaping Works (2.11)														
External and internal finishes design														
05-2600	External and internal finishes design for the Administration Building (2.11.05)	105	10	45%	31-Oct-20 A	09-Jul-23	01-Jan-24	10-Jan-24	185					
Facade Structural Design														
05-8060-1(6D)	Administration Building and Viewing Gallery (2.7.12.01)	90	30	5%	07-Dec-21 A	29-Jul-23	07-Dec-23	05-Jan-24	160					
05-8080-1(6D)	Elevated Driveway and Associated Structures	91	30	5%	26-Aug-21 A	29-Jul-23	08-Mar-24	06-Apr-24	252					
05-8040-1(6D)	Reception Pavilion (2.3.14.07.01)	90	30	5%	05-Oct-21 A	29-Jul-23	10-May-24	08-Jun-24	315					
05-8050-1(6D)	Mechanical Treatment Plant & Desalination Plant Building (2.4.14.01)	90	30	5%	08-Mar-22 A	29-Jul-23	29-May-24	27-Jun-24	334					
AIP Testing and Commissioning (2.12)														
05-2650-1(5)	Factory Acceptance Testing plan (2.12.01.02-07) (8 Packages)	105	30	5%	23-Apr-19 A	29-Jul-23	05-Sep-23	04-Oct-23	67					
AIP Miscellaneous Works (2.14)														
05-2710	Existing onshore crane replacement works at Portion 2	105	105	0%	30-Jun-23	12-Oct-23	11-Aug-23	23-Nov-23	42					
AIP Miscellaneous Detailing (2.15)														
05-2740	Gatehouses (2.15.03)	90	30	5%	25-May-22 A	29-Jul-23	02-Aug-23	31-Aug-23	33					
05-2750	Weighbridge office (2.15.04)	90	30	5%	25-May-22 A	29-Jul-23	04-Aug-23	02-Sep-23	35					
AIP Auxiliary Plant Systems (2.16)														
05-2770	Vehicle Fuel Filling Station (2.16.02)	90	90	0%	30-Jun-23	27-Sep-23	22-Jul-23	19-Oct-23	22					
05-2760	Maintenance workshops (2.16.01)	90	90	0%	30-Jun-23	27-Sep-23	21-Aug-23	18-Nov-23	52					
AIP O&M Packages														
05-8010(6E)	Warehouse (O&M Scope)	185	0	5%	04-Jul-22 A	30-Jun-23	22-Apr-24	23-Sep-24	452					
05-8040(6E)	Bicar Debagging Station (O&M Scope)	105	0	5%	17-Nov-22 A	30-Jun-23	21-Aug-24	21-Aug-24	419					

3-Month Rolling Programme (June 2023)

- Remaining Work
- Actual Work
- Critical Remaining Work
- Milestone
- Actual Milestone
- Critical Milestone

Activity ID	Activity Name	Original Duration	Remaining Duration	Activity % Complete	Current Start	Current Finish	Late Start	Late Finish	Total Float	M67/Remarks	2023					
											Jun 67	Jul 66	Aug 69	Sep 70		
05-8030(6E)	Ash & Residues Container (O&M Scope)	160	0	5%	06-Jun-22 A	30-Jun-23	23-Sep-24	23-Sep-24	452							
DDA Design Package Submissions																
DDA Process and Layout Design (2.1)																
MSW treatment process design for incineration (2.1.13)																
05-5090	Incineration System (2.1.13.01) (2 Packages)	105	0	5%	22-Apr-20 A	30-Jun-23	21-Oct-24	21-Oct-24	480							
05-5100	Heat Recovery Boiler (2.1.13.02) (2 Packages)	105	0	5%	23-Apr-20 A	30-Jun-23	21-Oct-24	21-Oct-24	480							
05-5120	Leachate Collection and Treatment (2.1.13.05) (2 Packages)	256	46	25%	30-Jun-22 A	14-Aug-23	14-Aug-23	06-Sep-24	434							
05-5140	Overall Plan Water Scheme (2.1.13.07)	105	0	5%	29-Jan-21 A	30-Jun-23	21-Oct-24	21-Oct-24	480							
05-5150	Boiler Feed Water System (2.1.13.03) (2 Packages)	105	0	45%	23-Apr-20 A	30-Jun-23	21-Oct-24	21-Oct-24	480							
MSW treatment process design for mechanical treatment (2.1.14)																
05-3510	Water Treatment Plant and Boiler Water Treatment (Demin Unit) Plant	105	0	5%	02-Oct-20 A	07-Aug-23	05-May-23	05-May-23	-55							
05-3500	Mechanical Treatment Plant (2.1.14)	39	39	0%	30-Jun-23*	07-Aug-23	30-Jul-23	06-Sep-23	30			30-Jun-23*				
Waste heat recovery and Power generation system (2.1.15)																
05-5240	Compressed Air Plants	105	30	25%	30-Sep-21 A	29-Jul-23	20-Dec-23	18-Jan-24	173							
Logistic arrangement design for MSW and Ash and Residues (2.1.17)																
05-4390	Weighbridge Systems	105	0	5%	25-Aug-21 A	30-Jun-23	01-Aug-23	01-Aug-23	33							
05-4410	Mechanical Shredder	105	0	5%	25-Sep-21 A	30-Jun-23	14-Aug-23	14-Aug-23	46							
DDA Ground Treatment, Reclamation, Seawall, Breakwater, Berth (2.2)																
05-3490	Onshore vessel power supply system (2.2.24)	90	90	0%	30-Jul-23	27-Oct-23	23-Aug-23	20-Nov-23	24							
05-3450	Seawall design (2.2.20)	60	20	65%	20-Jan-19 A	19-Jul-23	17-Nov-23	06-Dec-23	140							
05-3470	Berth design (2.2.22)	60	20	65%	30-Jan-19 A	19-Jul-23	08-Mar-24	27-Mar-24	252							
05-3430-2(M37)	Geotechnical Interpretative Report (2.2.02.02)	105	10	65%	31-Dec-20 A	09-Jul-23	21-Mar-24	30-Mar-24	265							
DDA Incineration Plant Buildings (2.3)																
Electrical and instrumentation works design (2.3.15)																
2.3.15.01																
05-3360	11kV/380V Power Transformers Design (2.3.15.01)	105	30	80%	05-Nov-21 A	29-Jul-23	14-May-24	12-Jun-24	319							
E&I Package 1 (Process Island) (2.3.15.02)																
05-3390-10(M55)	Electrical Works - MCC Panels (2.3.15.02.01)	105	0	80%	22-Sep-20 A	30-Jun-23	24-Dec-23	13-May-24	319							
05-7400-1(M55)	Electrical works CEMS and Process Analysers (2.3.15.02.07)	105	0	5%	12-Jul-21 A	30-Jun-23	17-Apr-24	17-Apr-24	293							
05-3390-11(M55)	Electrical Works - Process Island Uninterruptable Power Supply (UPS) (2.3.15.02.03)	105	0	80%	27-Nov-20 A	30-Jun-23	13-May-24	13-May-24	319							
E&I Package 2 (Power Island) (2.3.15.03)																
05-3390-7(M55)	Instrumentation works design(2.3.15.03.05 & 2.3.15.03.06)	105	0	80%	10-Feb-21 A	30-Jun-23	24-Sep-23	24-Sep-23	87							
05-3390-4(M46)	Generator Related Equipment (2.3.15.03.08)	105	0	80%	29-Jun-21 A	30-Jun-23	12-Jun-24	12-Jun-24	349							
05-3390-13(M55)10	Electrical Works Design (2.3.15.03.01 to 04)	105	10	80%	23-Dec-20 A	09-Jul-23	03-Jul-24	12-Jul-24	369							
Control Works Design SCADA & PLC Control System (2.3.15.03.07)																
05-3390-2(M46)	Software Design (2.3.15.03.07.02)	105	0	45%	30-Oct-21 A	30-Jun-23	18-Jul-23	18-Jul-23	19							
05-3390-1(M46)	Hardware Design (2.3.15.03.07.01)	105	0	65%	16-Sep-19 A	30-Jun-23	17-Feb-24	17-Feb-24	233							
Operation Management System (2.3.15.04)																
05-4490	Design of the Air Quality Monitoring Stations (2.9.03)	60	3	95%	16-Mar-23 A	02-Jul-23	29-Jun-23	01-Jul-23	-1							
05-7400(6E)	Automatic License Plate and Container Recognition System (ALPCRS)	105	0	45%	05-Sep-18 A	30-Jun-23	18-Nov-23	18-Nov-23	142							
05-3390-6(M46)	OMS/SCADA/DCS - System Networks Details (2.3.15.04.02)	105	0	65%	30-Oct-21 A	30-Jun-23	19-Dec-23	19-Dec-23	173							
05-3390-7(M46)	Software Standard Component	105	30	5%	09-Dec-20 A	29-Jul-23	19-Jan-24	17-Feb-24	203							
2.3.15.04.03																
2.3.15.04.03.01																
05-3390-8(M46)	OMS/SCADA/DCS - OLM Panel Design for Power Island (2.3.15.04.03.01.02)	105	0	80%	15-Dec-21 A	30-Jun-23	19-Dec-23	19-Dec-23	173							
2.3.15.04.03.02																
05-3390-13(M58)	OMS/SCADA/DCS - Panel Design for Power Island and Plant Common (2.3.15.04.03.02)	105	90	80%	02-Aug-22 A	27-Sep-23	20-Nov-23	17-Feb-24	143							
2.3.15.04.03.03																
05-3390-14(M55)	OMS/SCADA/DCS - Server Panel Design (2.3.15.04.03.03)	105	0	80%	19-Apr-22 A	30-Jun-23	17-Feb-24	17-Feb-24	233							
2.3.15.04.06																
05-3420(M58)	3rd Party System for Power Island & Communication Data Tables for Process Vol 1 and Power Island & Plant C. Vol 1 & 2	105	30	80%	06-Oct-21 A	29-Jul-23	19-Jan-24	17-Feb-24	203							
05-3390-9(6D)	Process Related 3rd Party System (2.3.15.04.06.01.01)	105	0	80%	09-Dec-21 A	30-Jun-23	17-Feb-24	17-Feb-24	233							
2.3.15.05																
05-3390-3(M55)	Electrical and Instrumentation Works Design - Compressed Air Plants (2.3.15.05.03)	105	0	80%	29-Nov-21 A	30-Jun-23	02-Nov-23	02-Nov-23	126							
05-3390-17(M55)	Waste Crane Functional Description (2.3.15.05.08)	105	0	80%	15-Jul-21 A	30-Jun-23	11-Nov-23	11-Nov-23	135							
05-3390-5(M55)	Electrical and Instrumentation Works - Ash Crane (2.3.15.05.05)	105	0	80%	30-Aug-21 A	30-Jun-23	12-Nov-23	12-Nov-23	136							
2.3.15.07																
05-3390-20(M55)	SCADA & PLC Control System - Software Design (2.3.15.07.02)	105	90	5%	27-Sep-21 A	27-Sep-23	20-Nov-23	17-Feb-24	143							
2.3.15.08																
05-3390-21(M55)	Operation Management System (2.3.15.08)	105	90	80%	23-May-22 A	27-Sep-23	20-Nov-23	17-Feb-24	143							
Mechanical works design (2.3.16)																
Plant and Equipment																
05-3580	Weighbridge Systems	105	30	5%	30-Mar-22 A	29-Jul-23	03-Jul-23	01-Aug-23	3							
05-3600	Mechanical Shredder	0	0	0%	30-Jun-23	30-Jun-23	14-Aug-23	14-Aug-23	46			30-Jun-23				
05-3830	Compressed Air Plants	105	0	5%	31-Oct-20 A	30-Jun-23	02-Nov-23	02-Nov-23	126							
05-3390-4(M55)	Electrical and Instrumentation Works - Waste Crane and Grapple System (2.3.15.05.04)	105	0	70%	07-Jan-20 A	30-Jun-23	11-Nov-23	11-Nov-23	135							

3-Month Rolling Programme (June 2023)

- Remaining Work
- Actual Work
- Critical Remaining Work
- Milestone
- Actual Milestone
- Critical Milestone

Activity ID	Activity Name	Original Duration	Remaining Duration	Activity % Complete	Current Start	Current Finish	Late Start	Late Finish	Total Float	M67 Remarks	2023			
											Jun 67	Jul 68	Aug 69	Sep 70
05-3650	Leachate collection and treatment	105	105	0%	30-Jun-23*	12-Oct-23	16-Aug-23	28-Nov-23	47		30-Jun-23*			
Process Pipeworks (Incl. Ductworks) and Valves														
05-4350	Pipe Rack C1, C2, C3, D1 & D2 (Prefab.3)	105	0	5%	28-Feb-21 A	30-Jun-23	12-Mar-23	10-Dec-23	164					
05-4370	Pipebridge B (Between CCCW Area & Turbine Hall)	105	0	5%	28-Feb-21 A	30-Jun-23	27-Jul-23	27-Jul-23	28					
05-4380	Pipebridge C (Between Turbine Hall & ACC Equipment Yard)	105	0	5%	28-Feb-21 A	30-Jun-23	28-Jul-23	28-Jul-23	29					
05-4950	Turbine Hall	105	0	80%	31-May-21 A	30-Jun-23	24-Sep-23	24-Sep-23	87					
05-4360	Compressed Air Plant area	105	0	45%	31-May-21 A	30-Jun-23	27-Oct-23	27-Oct-23	120					
05-4970	CCCW Area	105	0	65%	31-May-21 A	30-Jun-23	02-Dec-23	02-Dec-23	156					
05-4960	ACC Equipment Yard	105	0	65%	31-May-21 A	30-Jun-23	10-Dec-23	10-Dec-23	164					
Process steel structure support (For equipment, piping & duct, cable tray etc)														
05-3560	Pipebridge B (Between CCCW Area & Turbine Hall)	105	0	5%	29-May-21 A	30-Jun-23	27-Sep-23	27-Sep-23	90					
05-3570	Pipebridge C (Between Turbine Hall & ACC Equipment Yard)	105	0	5%	10-Jun-21 A	30-Jun-23	03-Oct-23	03-Oct-23	96					
05-3540	Pipe Rack C1, C2, C3, D1 & D2 (Prefab.3)	105	0	80%	29-May-21 A	30-Jun-23	09-Nov-23	09-Nov-23	133					
Equipment and piping insulation														
05-4550	Steam Turbine Generator (STG) and Pressure Reducing and Desuperheating Station (PRDS)	105	0	5%	30-Jan-22 A	30-Jun-23	01-Feb-24	01-Feb-24	217					
05-4560	Air cooled condenser	105	0	5%	31-Dec-21 A	30-Jun-23	07-Feb-24	07-Feb-24	223					
05-4570	Closed Circuit Cooling Water System	105	60	5%	31-Dec-21 A	28-Aug-23	20-Dec-23	17-Feb-24	173					
DDA Fire services installation design (2.3.17)														
05-3660	Fire Systems (same package with 05-3680)	60	15	5%	22-Sep-22 A	14-Jul-23	30-Jul-23	13-Aug-23	30					
05-3680	FS schematics (same package with 05-3660)	60	15	5%	22-Sep-22 A	14-Jul-23	30-Jul-23	13-Aug-23	30					
Building services design (excluding fire services installation design) (2.3.18)														
05-3690	Electrical Services and Lighting (7 Packages)	60	60	0%	30-Jun-23	28-Aug-23	24-May-23	22-Jul-23	-37					
05-3740	ELV (7 Packages)	60	60	0%	30-Jun-23	28-Aug-23	24-May-23	22-Jul-23	-37					
05-3750	Lifts and Escalators	90	90	0%	30-Jun-23	27-Sep-23	15-Jun-23	12-Sep-23	-15					
General Layout Drawings and Fire Safety Strategy (2.3.25)														
05-3310	Turbine Hall Building	105	0	25%	29-Dec-21 A	30-Jun-23	08-Jun-24	08-Jun-24	345					
05-3300	ACC Equipment Structure	60	30	50%	15-Dec-22 A	29-Jul-23	08-Aug-24	06-Sep-24	405					
DDA Mechanical Treatment Plant Building (2.4)														
05-5180	Structural design (2.4.14)	60	15	5%	23-Feb-23 A	14-Jul-23	30-Jun-23	14-Jul-23	0					
05-5210	Fire services installation design (2.6.17)	60	60	5%	21-Apr-23 A	28-Aug-23	15-Jul-23	12-Sep-23	15					
05-5190	Electrical and instrumentation works design	44	44	0%	30-Jul-23	11-Sep-23	24-Aug-23	06-Oct-23	25					
05-5200	Mechanical works design (2.4.16)	60	60	0%	30-Jul-23	27-Sep-23	08-Aug-23	06-Oct-23	9					
Building services design (excluding fire services installation design) (2.4.18)														
05-3870	Odour Control	90	14	5%	16-Apr-23 A	13-Jul-23	01-Jul-23	14-Jul-23	1					
05-3880	Plumbing	60	30	5%	20-Sep-22 A	29-Jul-23	10-Aug-23	08-Sep-23	41					
05-3910	Lifts and Escalators	90	90	0%	30-Jun-23	27-Sep-23	15-Jun-23	12-Sep-23	-15					
05-3860	MVAC	90	90	5%	14-Feb-23 A	27-Sep-23	09-Sep-23	07-Dec-23	71					
05-3910-1	Building Management System (BMS)	60	60	5%	20-Sep-22 A	28-Aug-23	17-Oct-23	15-Dec-23	109					
05-3900	Lighting and small power	90	90	5%	20-Sep-22 A	27-Sep-23	17-Oct-23	14-Jan-24	109					
05-3890	Drainage	60	60	5%	24-Apr-23 A	28-Aug-23	08-Dec-23	05-Feb-24	161					
05-3850	LV and Emergency Power Distribution Design	90	90	5%	20-Sep-22 A	27-Sep-23	14-Apr-24	12-Jul-24	289					
DDA Wastewater Treatment Plant (2.5)														
05-3950	Electrical and instrumentation works design (2.5.15)	60	15	5%	19-Sep-22 A	14-Jul-23	12-Jul-23	26-Jul-23	12					
05-3960	Mechanical works design (2.5.16) (5 Packages)	232	0	5%	31-May-22 A	30-Jun-23	26-Jul-23	26-Jul-23	27					
05-3970	Fire services installation design (2.6.17) (2 Packages)	60	30	5%	21-Apr-23 A	29-Jul-23	08-Aug-24	06-Sep-24	405					
Building services design (excluding fire services installation design) (2.5.18)														
05-3990	MVAC	90	30	5%	09-Mar-23 A	29-Jul-23	06-May-24	04-Jun-24	311					
05-3980	LV and Emergency Power Distribution Design for IWMF Waste Water Treatment Plant	90	90	5%	20-Sep-22 A	27-Sep-23	15-Mar-24	12-Jun-24	259					
05-4010	Plumbing	90	30	5%	20-Sep-22 A	29-Jul-23	12-Aug-24	10-Sep-24	409					
05-4020	Drainage	105	30	80%	10-Mar-22 A	29-Jul-23	12-Aug-24	10-Sep-24	409					
05-4030	ELV	90	30	80%	22-Sep-22 A	29-Jul-23	11-Oct-24	09-Nov-24	469					
DDA Water Treatment Plant Building (2.6)														
05-4090	Mechanical works design (2.6.16)	90	30	5%	02-May-22 A	29-Jul-23	07-Jun-23	06-Jul-23	-23					
05-4070	Structural design (2.6.14)	60	30	5%	25-Nov-21 A	29-Jul-23	22-Jul-23	20-Aug-23	22					
05-4100	Fire services installation design (2.6.17)	60	30	5%	22-Sep-22 A	29-Jul-23	14-Aug-23	12-Sep-23	45					
Building services design (excluding fire services installation design) (2.6.18)														
05-4140	Plumbing	60	30	5%	20-Sep-22 A	29-Jul-23	10-Aug-23	08-Sep-23	41					
05-4120	MVAC	90	30	0%	29-Jun-22 A	29-Jul-23	08-Nov-23	07-Dec-23	131					
05-4160	ELV	90	30	5%	20-Sep-22 A	29-Jul-23	16-Dec-23	14-Jan-24	169					
05-4150	Drainage	60	30	5%	20-Sep-22 A	29-Jul-23	07-Jan-24	05-Feb-24	191					
05-4110	Electrical Services and Lighting	90	30	5%	20-Sep-22 A	29-Jul-23	13-Jun-24	12-Jul-24	349					
Electrical and instrumentation works design (2.6.15)														
05-4080	Water Treatment Plant (WTP) - Variable Speed Drive (2.6.15.01)	238	0	5%	11-Apr-22 A	30-Jun-23	05-Aug-23	05-Aug-23	37					
DDA Administration Building (2.7)														
05-4190	Structural design (2.7.12)	105	30	5%	08-Dec-22 A	29-Jul-23	13-Aug-23	11-Sep-23	44					
05-4210	Fire services installation design (2.7.14)	60	30	5%	09-Mar-23 A	29-Jul-23	10-May-24	08-Jun-24	315					

3-Month Rolling Programme (June 2023)

- Remaining Work
- Actual Work
- Critical Remaining Work
- Milestone
- Actual Milestone
- Critical Milestone

Activity ID	Activity Name	Original Duration	Remaining Duration	Activity % Complete	Current Start	Current Finish	Late Start	Late Finish	Total Float	M67 Remarks	2023			
											Jun 67	Jul 68	Aug 69	Sep 70
Building services design (excluding fire services installation design) (2.7.15)														
05-4280	Lifts and Escalators	90	90	0%	20-Sep-22 A	27-Sep-23	15-Jun-23	11-Aug-24	319					
05-4280-1	Building Management System (BMS)	90	30	0%	29-Oct-22 A	29-Jul-23	16-Nov-23	15-Dec-23	139					
05-4230	MVAC	90	30	5%	14-Feb-23 A	29-Jul-23	03-May-24	01-Jun-24	308					
05-4220	Electrical Services and Lighting	90	30	5%	02-Dec-22 A	29-Jul-23	14-May-24	12-Jun-24	319					
05-4270	ELV	90	30	5%	20-Sep-22 A	29-Jul-23	14-May-24	12-Jun-24	319					
05-4250	Plumbing	90	30	5%	05-May-23 A	29-Jul-23	13-Jul-24	11-Aug-24	379					
05-4260	Drainage	90	30	5%	05-May-23 A	29-Jul-23	13-Jul-24	11-Aug-24	379					
DDA WMF Substation (2.8)														
05-4340	Fire services installation design (2.8.17)	60	0	25%	17-Jun-22 A	30-Jun-23	06-Jul-23	06-Jul-23	7					
Building services design (excluding fire services installation design) (2.8.18)														
05-5000	MVAC	90	30	5%	19-Nov-21 A	29-Jul-23	03-May-24	01-Jun-24	308					
05-4990	Electrical Services and Lighting	90	30	5%	22-Apr-22 A	29-Jul-23	13-Jun-24	12-Jul-24	349					
05-5030	ELV	90	30	45%	25-Oct-21 A	29-Jul-23	13-Jun-24	12-Jul-24	349					
05-5010	Plumbing	90	30	5%	08-Dec-22 A	29-Jul-23	13-Jul-24	11-Aug-24	379					
05-5020	Drainage	90	30	0%	10-Nov-22 A	29-Jul-23	13-Jul-24	11-Aug-24	379					
05-5030-1	Building Management System (BMS)	90	30	5%	25-Oct-21 A	29-Jul-23	12-Aug-24	10-Sep-24	409					
Electrical and instrumentation works design (2.8.15)														
2.8.15.06														
05-4320	Electrical and instrumentation works design (2.8.15.06.01 to 40)	90	0	25%	16-Oct-21 A	30-Jun-23	06-Jul-23	06-Jul-23	7					
DDA Chimney														
05-5370	Structural Design	90	30	80%	14-Mar-22 A	29-Jul-23	22-May-23	20-Jun-23	-39					
05-5540-2(6D)	Fire services installation design	60	60	0%	30-Jun-23	28-Aug-23	14-Aug-23	12-Oct-23	45					
Building services design (excluding fire services installation design)														
05-6050-1(5a)	Lift	90	90	0%	30-Jun-23	27-Sep-23	15-Jun-23	12-Sep-23	-15					
DDA Elevated Drive Way and Associated Structures Foundation														
05-5540-3(6D)	Fire services installation design	60	30	50%	24-Apr-23 A	29-Jul-23	14-Aug-23	12-Sep-23	45					
05-5380	Structural Design	90	0	80%	06-Jan-22 A	30-Jun-23	15-Oct-23	15-Oct-23	108					
DDA Reception Pavilion														
05-5390	Structural Design	60	30	5%	03-Mar-23 A	29-Jul-23	08-Jun-23	07-Jul-23	-22					
05-5540-4(6D)	Fire services installation design	60	30	50%	24-Apr-23 A	29-Jul-23	13-Oct-23	11-Nov-23	105					
05-3280	Foundation Design	90	30	5%	09-Apr-21 A	29-Jul-23	10-Nov-23	09-Dec-23	133					
Building services design (excluding fire services installation design)														
05-2130-1	Building Management System (BMS)	60	60	0%	30-Jun-23	28-Aug-23	19-Jul-23	16-Sep-23	19					
05-7330	ELV	105	105	0%	30-Jun-23	12-Oct-23	04-Jun-23	16-Sep-23	-26					
DDA CCCW Building														
05-5540-5(6D)	Fire services installation design	60	30	50%	08-Dec-22 A	29-Jul-23	10-May-24	08-Jun-24	315					
Building services design (excluding fire services installation design)														
05-7340	Electrical Services and Lighting	90	90	5%	21-Jun-22 A	27-Sep-23	14-Apr-24	12-Jul-24	289					
DDA Roads and Utilities (2.10)														
Sewerage design on the Artificial Island (2.10.14)														
05-4440-1(M55)	Ship-to-shore Sewage Transfer System for WMF Vessels (Caisson 13)	90	4	45%	13-Jan-22 A	03-Jul-23	26-Dec-24	29-Dec-24	545					
05-4440-2(M55)	Ship-to-shore Sewage Transfer System for Passenger Ferry	90	30	45%	13-Jan-21 A	29-Jul-23	14-Jan-25	12-Feb-25	564					
Drainage system design on the Artificial Island (2.10.15)														
05-5320	First Flush Drainage System concept	105	0	100%	31-Dec-21 A	30-Jun-23	28-Dec-23	28-Dec-23	182					
Water supply system design on the Artificial Island (2.10.16)														
05-5300-1(M24)	E&M system for seawater intake (2.10.16.07)	105	75	5%	04-Apr-22 A	12-Sep-23	16-Nov-23	29-Jan-24	139					
Design of telecommunication and other utilities (2.10.18)														
05-4590	Site Lighting Concept / Schematics	90	90	0%	30-Jun-23	27-Sep-23	05-May-23	02-Aug-23	-56					
05-3400 (M21)	Computerised Maintenance Management System (CMMS) (2.10.18.10)	105	30	80%	24-May-22 A	29-Jul-23	23-Jul-23	21-Aug-23	23					
05-4610	Site ELV Network System - Communications System concept / schematics	75	30	5%	16-Aug-22 A	29-Jul-23	07-Dec-23	05-Jan-24	160					
05-4620	Site ELV Network System - Security Systems concept / schematics	75	30	5%	14-Jun-22 A	29-Jul-23	07-Dec-23	05-Jan-24	160					
05-4640	Microwave transmission of FS direct link	105	3	70%	22-Aug-22 A	02-Jul-23	03-Jan-24	05-Jan-24	187					
05-3410 (M21)	Information and Document Management System (IDMS) (2.10.18.11)	105	60	45%	10-May-22 A	28-Aug-23	20-Dec-23	17-Feb-24	173					
DDA Architectural, Finishes and Landscaping Works (2.11)														
External and internal finishes design														
05-4720	External and internal finishes design for Reception Pavilion	60	60	45%	30-Jun-23	28-Aug-23	08-Jun-23	06-Aug-23	-22					
05-5420	External and internal finishes design for Elevated Driveway	90	60	45%	15-Jun-21 A	28-Aug-23	13-Sep-23	11-Nov-23	75					
05-4710	External and internal finishes design for Chimney	90	60	45%	02-Sep-22 A	28-Aug-23	15-Nov-23	13-Jan-24	138					
05-4690	External and internal finishes design for Turbine Hall Building	90	9	45%	10-Aug-22 A	08-Jul-23	25-Jan-24	02-Feb-24	209					
05-4700	External and internal finishes design for CCCW Building	90	0	45%	10-Aug-22 A	30-Jun-23	09-May-24	09-May-24	315					
05-4670	External and internal finishes design for Incineration Plant Building (2.11.15)	90	30	5%	19-Sep-22 A	29-Jul-23	09-Jun-24	08-Jul-24	345					
05-4770	External and internal finishes design for the IWMF Substation (2.11.20)	90	5	45%	10-Aug-22 A	04-Jul-23	11-Sep-24	15-Sep-24	439					
Facade Structural Design														
05-8000(M45)	Chimney (2.3.14.05.01)	90	90	0%	30-Jun-23	27-Sep-23	08-Jul-23	05-Oct-23	8					
05-8010(M45)	IWMF Substation	90	0	0%	11-Jul-22 A	30-Jun-23	30-Oct-23	30-Oct-23	123					

3-Month Rolling Programme (June 2023)

- Remaining Work
- Actual Work
- Critical Remaining Work
- Milestone
- Actual Milestone
- Critical Milestone

Activity ID	Activity Name	Original Duration	Remaining Duration	Activity % Complete	Current Start	Current Finish	Late Start	Late Finish	Total Float	M&R Remarks	2023				
											Jun 67	Jul 68	Aug 69	Sep 70	
05-8020(6D)	Process Building & Wastewater Treatment Plant (2.6.14.01)	90	60	80%	07-Apr-22 A	28-Aug-23	28-Sep-23	26-Nov-23	90						28-Aug-23, Process Building
DDA Testing and Commissioning (2.12)															
05-4810-2(M55)	FAT of DCS - Software SIL FAT Plant for Process Island (2.12.09.03.01)	122	30		19-May-22 A	29-Jul-23	10-Dec-23	17-Jan-24	172						
05-4810-1(5a)	Factory Acceptance Testing plan (2.12.09.02-07) (8 Packages)	105	10	100%	19-May-22 A	09-Jul-23	10-Dec-23	19-Dec-23	163						09-Jul-23, FAT of DCS - Software SIL FAT Plant for Process Island (2.12.09.03.01)
DDA Transportation Facilities for the Operation (2.13)															
05-4850	Design of vehicles for MSW and Ash and Residues delivery (2.13.05)	90	30	5%	13-Jun-22 A	29-Jul-23	19-Dec-23	17-Jan-24	172						29-Jul-23, Factory Acceptance Testing plan (2.12.09.02-07)
05-4860	Design of marine vessels for the use of the Employer and visitors (2.13.06)	370	0		25-Jun-22 A	30-Jun-23	28-Jun-23	28-Jun-23	-1						
DDA Miscellaneous Detailing (2.15)															
05-4910	Weighbridge office (2.15.08)	341	0	0%	25-Jun-22 A	30-Jun-23	28-Jun-23	28-Jun-23	-1						30-Jun-23, Design of vehicles for MSW and Ash and Residues delivery (2.13.05), 30-Jun-23, 30-Jun-23, Design of marine vessels for the use of the Employer and visitors (2.13.06)
DDA Auxiliary Plant Systems (2.16)															
05-4940-2(5a)	Hoisting systems (2.16.10)	62	62	0%	30-Jun-23	30-Aug-23	02-Aug-23	02-Oct-23	33						30-Jun-23, Design of vehicles for MSW and Ash and Residues delivery (2.13.05), 30-Jun-23, 30-Jun-23, Design of marine vessels for the use of the Employer and visitors (2.13.06)
Procurement of Major Equipment															
Off-site Fabrication of Incineration Modules															
Fabrication of Module (TPU)															
PFab 1- Line 1															
E&I Installation (On-site Installation)															
Electrical															
06-TPU-1-1290	PFab 1-Line 1 - Electrical Equipment Installation	183	183	0%	31-Jul-23	29-Jan-24	31-Jul-23	04-Feb-24	6						31-Jul-23*
06-TPU-1-1280	PFab 1-Line 1 - Electrical Cable Pulling and Termination	180	180	0%	03-Aug-23	29-Jan-24	09-Aug-23	04-Feb-24	6						03-Aug-23
Instrument															
06-TPU-1-1320	PFab 1-Line 1 - Instrument Equipment Installation	399	182	43.89%	25-Nov-22 A	08-Oct-23	07-Aug-23	15-Nov-23	38						
06-TPU-1-1330	PFab 1-Line 1 - Instrument Tubing Installation	180	180	0%	30-Jun-23	26-Dec-23	07-Aug-23	02-Feb-24	38						30-Jun-23
06-TPU-1-1310	PFab 1-Line 1 - Instrument Cable Pulling and Termination	180	180	0%	02-Jul-23	28-Dec-23	09-Aug-23	04-Feb-24	38						02-Jul-23
Insulation															
06-TPU-1-1020	PFab 1-Line 1 - Insulation	150	233	0%	23-May-22 A	17-Feb-24	30-Jun-23	17-Feb-24	0						
PFab 1- Line 2															
E&I Installation (On-site Installation)															
Electrical															
06-TPU-2-1280	PFab 1-Line 2 - Electrical Equipment Installation	553	232	0%	22-May-22 A	16-Feb-24	30-Jun-23	16-Feb-24	0						
06-TPU-2-1270	PFab 1-Line 2 - Electrical Cable Pulling and Termination	188	188	0%	31-Jul-23	03-Feb-24	31-Jul-23	03-Feb-24	0						31-Jul-23*
Instrument															
06-TPU-2-1310	PFab 1-Line 2 - Instrument Equipment Installation	180	180	0%	08-Aug-23	03-Feb-24	08-Aug-23	03-Feb-24	0						08-Aug-23
06-TPU-2-1320	PFab 1-Line 2 - Instrument Tubing Installation	188	188	0%	31-Jul-23	03-Feb-24	31-Jul-23	03-Feb-24	0						31-Jul-23
06-TPU-2-1300	PFab 1-Line 2 - Instrument Cable Pulling and Termination	180	180	0%	08-Aug-23	03-Feb-24*	08-Aug-23	03-Feb-24	0						08-Aug-23
Insulation															
06-TPU-2-1010	PFab 1-Line 2 - Insulation	150	232	0%	22-May-22 A	16-Feb-24*	30-Jun-23	16-Feb-24	0						
PFab 1- Line 3															
E&I Installation															
Electrical															
06-TPU-3-1280	PFab 1-Line 3 - Electrical Equipment Installation	180	180	0%	22-Aug-23	17-Feb-24	22-Aug-23	17-Feb-24	0						22-Aug-23
Instrument															
06-TPU-3-1310	PFab 1-Line 3 - Instrument Equipment Installation	180	180	0%	22-Aug-23	17-Feb-24	22-Aug-23	17-Feb-24	0						22-Aug-23
06-TPU-3-1320	PFab 1-Line 3 - Instrument Tubing Installation	180	180	0%	22-Aug-23	17-Feb-24	22-Aug-23	17-Feb-24	0						22-Aug-23
Insulation															
06-TPU-3-1010	PFab 1-Line 3 - Insulation	150	304	0%	23-May-22 A	28-Apr-24	30-Jun-23	28-Apr-24	0						
Load out & Shipping															
06-TPU-3-1030	PFab 1-Line 3 - Load out & ready to ship	10	10	0%	03-Jul-23	12-Jul-23	12-Feb-23	21-Feb-23	-141						03-Jul-23
Delivery															
06-TPU-3-1340	PFab 1-Line 3 - Delivery	10	10	0%	13-Jul-23	22-Jul-23	22-Feb-23	03-Mar-23	-141						13-Jul-23
PFab 1- Line 4															
Mechanical Erection															
06-TPU-4-1050	PFab 1-Line 4 - Mechanical Installation - 2nd Floor(EL20.47m~EL26.72m) (Including Deaerator)	721	304	0%	21-Feb-22 A	04-Jul-23	02-Mar-23	06-Mar-23	-120						
06-TPU-4-1060	PFab 1-Line 4 - Mechanical Installation - 3rd Floor(EL26.72m~EL37.72m) (Including Boiler Ash Transport)	80	5	93.75%	21-Feb-22 A	04-Jul-23	02-Mar-23	06-Mar-23	-120						PFab 1-Line 4 - Mechanical Installation - 2nd Floor(EL20.47m~EL26.72m) (Including Deaerator)
E&I Installation															
Electrical															
06-TPU-4-1280	PFab 1-Line 4 - Electrical Equipment Installation	180	180	0%	11-Sep-23	08-Mar-24	27-Aug-23	22-Feb-24	-15						11-Sep-23
Insulation															
06-TPU-4-1010	PFab 1-Line 4 - Insulation	180	180	0%	11-Sep-23	08-Mar-24	27-Aug-23	22-Feb-24	-15						
Load out & Shipping															
06-TPU-4-1030	PFab 1-Line 4 - Load Out & ready to ship	150	304	0%	25-May-22 A	28-Apr-24	30-Jun-23	28-Apr-24	0						
Delivery															
06-TPU-4-1340	PFab 1-Line 4 - Delivery	10	10	0%	23-Jul-23	01-Aug-23	07-Mar-23	16-Mar-23	-138						23-Jul-23*
PFab 1- Line 5															
Mechanical Erection															
06-TPU-5-1040	PFab 1-Line 5 - Mechanical Installation - 1st Floor (Below EL20.47m) (Including Combustion Grate)	10	10	0%	02-Aug-23	11-Aug-23	17-Mar-23	26-Mar-23	-138						02-Aug-23
06-TPU-5-1050	PFab 1-Line 5 - Mechanical Installation - 2nd Floor(EL20.47m~EL26.72m) (Including Deaerator)	10	10	0%	02-Aug-23	11-Aug-23	17-Mar-23	26-Mar-23	-138						11-Aug-23, Pfab 1-Line 4 - Delivery

3-Month Rolling Programme (June 2023)

■ Remaining Work ◆ Actual Milestone
■ Actual Work ◆ Critical Milestone
■ Critical Remaining Work
◆ Milestone







Activity ID	Activity Name	Original Duration	Remaining Duration	Activity % Complete	Current Start	Current Finish	Late Start	Late Finish	Total Float	M67 Remarks	2023			
											Jun 67	Jul 68	Aug 69	Sep 70
06-TPU-5-1060	PFab 1-Line 5 - Mechanical Installation - 3rd Floor(EL26.72m~EL37.72m) (Including Boiler Ash Transport)	80	0	100%	03-Mar-23 A	01-Aug-23	01-Jun-23	01-Jun-23	-60					
06-TPU-5-1070	PFab 1-Line 5 - Mechanical Installation - 4th Floor(EL37.72m~EL47.22m) (Including Air Ducts)	80	26	67.5%	03-Mar-23 A	01-Aug-23	07-May-23	01-Jun-23	-60					
Piping Fabrication		180	1		23-Mar-21 A	30-Jun-23	08-Apr-23	08-Apr-23	-83					
06-TPU-5-1220	PFab 1-Line 5 - Piping Fabrication	180	1	99.44%	23-Mar-21 A	30-Jun-23	08-Apr-23	08-Apr-23	-83					
Piping Installation		62	1		03-May-23 A	29-Aug-23	07-Jun-23	07-Jun-23	-83					
06-TPU-5-1000	PFab 1-Line 5 - Piping Installation	62	1	98.39%	03-May-23 A	29-Aug-23	07-Jun-23	07-Jun-23	-83					
E&I Installation		25	7		25-Jun-23 A	06-Jul-23	04-May-23	10-May-23	-57					
Electrical		25	7		25-Jun-23 A	06-Jul-23	04-May-23	10-May-23	-57					
06-TPU-5-1290	PFab 1-Line 5 - Electrical Heat Tracing Installation (Installation by Yard)	1	1	0%	30-Jun-23*	30-Jun-23	10-May-23	10-May-23	-51					
06-TPU-5-1330	PFab 1-Line 5 - MCC room installation (Installation by Yard)	25	7	72%	25-Jun-23 A	06-Jul-23	04-May-23	10-May-23	-57					
Insulation		150	369		04-Jun-22 A	02-Jul-24	30-Jun-23	02-Jul-24	0					
06-TPU-5-1010	PFab 1-Line 5 - Insulation	150	369	0%	04-Jun-22 A	02-Jul-24*	30-Jun-23	02-Jul-24	0					
Load out & Shipping		20	20		22-Sep-23	11-Oct-23	11-May-23	30-May-23	-134					
06-TPU-5-1030	PFab 1-Line 5 - Load Out & ready to ship	20	20	0%	22-Sep-23*	11-Oct-23	11-May-23	30-May-23	-134					
Delivery		10	10		12-Oct-23	21-Oct-23	31-May-23	09-Jun-23	-134					
06-TPU-5-1340	PFab 1-Line 5 - Delivery	10	10	0%	12-Oct-23	21-Oct-23	31-May-23	09-Jun-23	-134					
PFab 1-Line 6		581	342		03-Mar-22 A	05-Jun-24	14-May-23	05-Jun-24	0					
Mechanical Erection		491	1		03-Mar-22 A	30-Jun-23	02-Jun-23	02-Jun-23	-28					
06-TPU-6-1160	PFab 1-Line 6 - Mechanical Installation - 1st Floor (Below EL20.47m) (Including Combustion Grate)	80	1	98.75%	03-Mar-22 A	30-Jun-23	02-Jun-23	02-Jun-23	-28					
06-TPU-6-1170	PFab 1-Line 6 - Mechanical Installation - 2nd Floor(EL20.47m~EL26.72m) (Including Deaerator)	80	1	98.75%	20-May-22 A	30-Jun-23	02-Jun-23	02-Jun-23	-28					
06-TPU-6-1180	PFab 1-Line 6 - Mechanical Installation - 3rd Floor(EL26.72m~EL37.72m) (Including Boiler Ash Transport)	80	1	98.75%	19-Aug-22 A	30-Jun-23	02-Jun-23	02-Jun-23	-28					
06-TPU-6-1190	PFab 1-Line 6 - Mechanical Installation - 4th Floor(EL37.72m~EL47.22m) (Including Air Ducts)	80	1	98.75%	03-Mar-23 A	30-Jun-23	02-Jun-23	02-Jun-23	-28					
E&I Installation		26	20		05-Jun-23 A	19-Jul-23	14-May-23	02-Jun-23	-47					
Electrical		26	20		05-Jun-23 A	19-Jul-23	14-May-23	02-Jun-23	-47					
06-TPU-6-1290	PFab 1-Line 6 - Electrical Heat Tracing Installation (Installation by Yard)	26	1	96.15%	05-Jun-23 A	30-Jun-23	02-Jun-23	02-Jun-23	-28					
06-TPU-6-1330	PFab 1-Line 6 - MCC room installation (Installation by Yard)	25	20	20%	25-Jun-23 A	19-Jul-23	14-May-23	02-Jun-23	-47					
Insulation		150	342		08-Jul-22 A	05-Jun-24	30-Jun-23	05-Jun-24	0					
06-TPU-6-1010	PFab 1-Line 6 - Insulation	150	342	0%	08-Jul-22 A	05-Jun-24	30-Jun-23	05-Jun-24	0					
Load out & Shipping		20	20		02-Sep-23	21-Sep-23	03-Jun-23	22-Jun-23	-91					
06-TPU-6-1030	PFab 1-Line 6 - Load Out & ready to ship	20	20	0%	02-Sep-23*	21-Sep-23	03-Jun-23	22-Jun-23	-91					
Delivery		10	10		22-Sep-23	01-Oct-23	23-Jun-23	02-Jul-23	-91					
06-TPU-6-1340	PFab 1-Line 6 - Delivery	10	10	0%	22-Sep-23	01-Oct-23	23-Jun-23	02-Jul-23	-91					
Fabrication of Module (FGC)		910	309		18-Jun-21 A	03-May-24	25-Feb-23	03-May-24	0					
PFab 2 - Line 1		452	203		25-May-22 A	18-Jan-24	30-Jun-23	18-Jan-24	0					
E&I Installation		134	134		15-Jul-23	25-Nov-23	15-Jul-23	25-Nov-23	0					
Electrical		134	134		15-Jul-23	25-Nov-23	15-Jul-23	25-Nov-23	0					
06-FGC-1-1260	PFab 2-Line 1 - Electrical Equipment Installation	120	120	0%	15-Jul-23*	11-Nov-23	15-Jul-23	11-Nov-23	0					
06-FGC-1-1250	PFab 2-Line 1 - Electrical Cable Pulling and Termination	120	120	0%	29-Jul-23	25-Nov-23*	29-Jul-23	25-Nov-23	0					
Instrument		134	134		15-Jul-23	25-Nov-23	15-Jul-23	25-Nov-23	0					
06-FGC-1-1290	PFab 2-Line 1 - Instrument Equipment Installation	120	120	0%	15-Jul-23	11-Nov-23	15-Jul-23	11-Nov-23	0					
06-FGC-1-1300	PFab 2-Line 1 - Instrument Tubing Installation	120	120	0%	15-Jul-23	11-Nov-23	15-Jul-23	11-Nov-23	0					
06-FGC-1-1280	PFab 2-Line 1 - Instrument Cable Pulling and Termination	120	120	0%	29-Jul-23	25-Nov-23*	29-Jul-23	25-Nov-23	0					
Insulation		150	203		25-May-22 A	18-Jan-24	30-Jun-23	18-Jan-24	0					
06-FGC-1-1130	PFab 2-Line 1 - Insulation	150	203	0%	25-May-22 A	18-Jan-24	30-Jun-23	18-Jan-24	0					
PFab 2 - Line 2		271	203		10-Feb-23 A	18-Jan-24	29-Jun-23	18-Jan-24	0					
E&I Installation		134	134		15-Aug-23	26-Dec-23	14-Aug-23	26-Dec-23	0					
Electrical		134	134		15-Aug-23	26-Dec-23	14-Aug-23	26-Dec-23	0					
06-FGC-2-1260	PFab 2-Line 2 - Electrical Equipment Installation	120	120	0%	15-Aug-23*	12-Dec-23	14-Aug-23	12-Dec-23	0					
06-FGC-2-1250	PFab 2-Line 2 - Electrical Cable Pulling and Termination	120	120	0%	29-Aug-23	26-Dec-23*	28-Aug-23	26-Dec-23	0					
Instrument		134	134		15-Aug-23	26-Dec-23	14-Aug-23	26-Dec-23	0					
06-FGC-2-1290	PFab 2-Line 2 - Instrument Equipment Installation	120	120	0%	15-Aug-23	12-Dec-23	14-Aug-23	12-Dec-23	0					
06-FGC-2-1300	PFab 2-Line 2 - Instrument Tubing Installation	120	120	0%	15-Aug-23	12-Dec-23	14-Aug-23	12-Dec-23	0					
06-FGC-2-1280	PFab 2-Line 2 - Instrument Cable Pulling and Termination	120	120	0%	29-Aug-23	26-Dec-23*	28-Aug-23	26-Dec-23	0					
Insulation		203	203		10-Feb-23 A	18-Jan-24	29-Jun-23	18-Jan-24	0					
06-FGC-2-1010	PFab 2-Line 2 - Insulation	203	203	0%	10-Feb-23 A	18-Jan-24*	29-Jun-23	18-Jan-24	0					
PFab 2 - Line 3		588	73		02-Jan-22 A	10-Sep-23	24-Mar-23	23-Apr-23	-140					
Mechanical Erection		302	1		02-Jan-22 A	01-Jul-23	24-Mar-23	25-Mar-23	-97					
06-FGC-3-1010	PFab 2-Line 3 - 2nd Floor (EL12.47~ EL23.47m) (Including Dosing system bicar)	60	1	98.33%	10-Mar-22 A	30-Jun-23	24-Mar-23	24-Mar-23	-98					
06-FGC-3-1020	PFab 2-Line 3 - 3rd Floor (EL23.47~ EL34.47m) (Including Ash and residue to solidification)	60	0	100%	01-Sep-22 A	01-Jul-23	24-Mar-23	24-Mar-23	-98					
06-FGC-3-1000	PFab 2-Line 3 - 1st Floor (Below EL12.47m) (Including Silencer ID fan)	60	1	98.33%	02-Jan-22 A	30-Jun-23	25-Mar-23	25-Mar-23	-97					
E&I Installation		26	1		28-Apr-23 A	30-Jun-23	02-Apr-23	02-Apr-23	-89					
Electrical		26	1		28-Apr-23 A	30-Jun-23	02-Apr-23	02-Apr-23	-89					
06-FGC-3-1270	PFab 2-Line 3 - Electrical Heat Tracing Installation (Installation by Yard)	26	1	96.15%	08-May-23 A	30-Jun-23	02-Apr-23	02-Apr-23	-89					
06-FGC-3-1310	PFab 2-Line 3 - MCC room installation (Installation by Yard)	25	1	96%	28-Apr-23 A	30-Jun-23	02-Apr-23	02-Apr-23	-89					
Load out & Shipping		20	20		12-Aug-23	31-Aug-23	25-Mar-23	13-Apr-23	-140					
06-FGC-3-1200	PFab 2-Line 3 - Load Out & ready to ship	20	20	0%	12-Aug-23*	31-Aug-23	25-Mar-23	13-Apr-23	-140					

3-Month Rolling Programme (June 2023)

Page 7 of 15

 Remaining Work	◆ Actual Milestone
 Actual Work	◆ Critical Milestone
 Critical Remaining Work	
◆ Milestone	

Activity ID		Activity Name			Original Duration	Remaining Duration	Activity % Complete	Current Start	Current Finish	Late Start	Late Finish	Total Float	M67/Remarks	2023			
														Jun 67	Jul 68	Aug 69	Sep 70
Delivery		06-FGC-3-1320 PFab 2-Line 3 - Delivery			10	10	0%	01-Sep-23	10-Sep-23	14-Apr-23	23-Apr-23	-140					
PFab 2 - Line 4		06-FGC-4-1060 PFab 2-Line 4 - 3rd Floor (EL23.47- EL34.47m) (Including Ash and residue to solidification)			589	74	0%	24-Dec-21 A	11-Sep-23	25-Feb-23	23-Apr-23	-141					
Mechanical Erection		06-FGC-4-1040 PFab 2-Line 4 - 1st Floor (Below EL12.47m) (Including Silencer ID fan)			187	34	0%	24-Dec-21 A	02-Aug-23	25-Feb-23	13-Apr-23	-111					
E&I Installation		06-FGC-4-1310 PFab 2-Line 4 - MCC room installation (Installation by Yard)			26	1	96%	28-Apr-23 A	30-Jun-23	12-Apr-23	13-Apr-23	-78					
Electrical		06-FGC-4-1270 PFab 2-Line 4 - Electrical Heat Tracing Installation (Installation by Yard)			26	1	96.15%	08-May-23 A	30-Jun-23	13-Apr-23	13-Apr-23	-78					
Load out & Shipping		06-FGC-4-1030 PFab 2-Line 4 - Load Out & ready to ship			20	20	0%	13-Aug-23*	01-Sep-23	25-Mar-23	13-Apr-23	-141					
Delivery		06-FGC-4-1320 PFab 2-Line 4 - Delivery			10	10	0%	02-Sep-23	11-Sep-23	14-Apr-23	23-Apr-23	-141					
PFab 2 - Line 5		06-FGC-5-1090 PFab 2-Line 5 - Top Floor Primary & Secondary Steel Structure Erection			864	309	0%	18-Jun-21 A	03-May-24	30-Jun-23	03-May-24	0					
Structure Erection		06-FGC-5-1080 PFab 2-Line 5 - 4th Floor (EL34.47- EL44.22m) Primary & Secondary Steel Structure Erection			345	33	45%	20-May-22 A	01-Aug-23	10-Jul-23	13-Aug-23	12					
Mechanical Erection		06-FGC-5-1000 PFab 2-Line 5 - 1st Floor (Below EL12.47m) (Including Silencer ID fan)			60	34	43.33%	21-Jan-22 A	02-Aug-23	09-Jul-23	11-Aug-23	9					
Piping Fabrication		06-FGC-5-1010 PFab 2-Line 5 - 2nd Floor (EL12.47- EL23.47m) (Including Dosing system bicar)			60	34	43.33%	24-Jun-22 A	02-Aug-23	09-Jul-23	11-Aug-23	9					
Piping Installation		06-FGC-5-1020 PFab 2-Line 5 - 3rd Floor (EL23.47- EL34.47m) (Including Ash and residue to solidification)			60	34	43.33%	19-Sep-22 A	02-Aug-23	09-Jul-23	11-Aug-23	9					
E&I Installation		06-FGC-5-1030 PFab 2-Line 5 - 4th Floor (EL34.47- EL44.22m) (Including Urea to ammonia convertor)			50	5	90%	07-Oct-22 A	02-Aug-23	07-Aug-23	11-Aug-23	9					
Electrical		06-FGC-5-1170 PFab 2-Line 5 - Piping Fabrication			180	19	89.44%	18-Jun-21 A	18-Jul-23	09-Jul-23	27-Jul-23	9					
Structure Erection		06-FGC-5-1190 PFab 2-Line 5 - Piping Installation			36	36	0%	30-Jun-23*	04-Aug-23	09-Jul-23	13-Aug-23	9					
Mechanical Erection		06-FGC-5-1240 PFab 2-Line 5 - E&I Cable Ladder Erection			52	36	0%	14-Jun-23 A	04-Aug-23	09-Jul-23	18-Jan-24	167					
E&I Installation		06-FGC-5-1230 PFab 2-Line 5 - E&I Support Installation			45	29	35.56%	14-Jun-23 A	28-Jul-23	21-Dec-23	18-Jan-24	174					
Electrical		06-FGC-5-1270 PFab 2-Line 5 - Electrical Heat Tracing Installation (Installation by Yard)			26	26	0%	10-Jul-23*	04-Aug-23	19-Jul-23	13-Aug-23	9					
Insulation		06-FGC-5-1310 PFab 2-Line 5 - MCC room installation (Installation by Yard)			25	25	0%	11-Jul-23*	04-Aug-23	20-Jul-23	13-Aug-23	9					
Load out & Shipping		06-FGC-5-1200 PFab 2-Line 5 - Insulation			150	309	0%	30-Jun-22 A	03-May-24*	30-Jun-23	03-May-24	0					
Delivery		06-FGC-5-1220 PFab 2-Line 5 - Load Out & ready to ship			20	20	0%	22-Oct-23	10-Nov-23	14-Aug-23	02-Sep-23	-69					
PFab 2 - Line 6		06-FGC-6-1140 PFab 2-Line 6 - 4th Floor (EL34.47- EL44.22m) Primary & Secondary Steel Structure Erection			613	135	0%	21-Jan-22 A	11-Nov-23	14-Jun-23	03-Sep-23	-69					
Structure Erection		06-FGC-6-1150 PFab 2-Line 6 - Top Floor Primary & Secondary Steel Structure Erection			356	49	18.33%	20-May-22 A	17-Aug-23	15-Jul-23	03-Sep-23	17					
Mechanical Erection		06-FGC-6-1170 PFab 2-Line 6 - 1st Floor (Below EL12.47m) (Including Silencer ID fan)			60	62	0%	21-Jan-22 A	30-Aug-23	14-Jun-23	14-Aug-23	-16					
E&I Installation		06-FGC-6-1180 PFab 2-Line 6 - 2nd Floor (EL12.47- EL23.47m) (Including Dosing system bicar)			60	43	28.33%	24-Jun-22 A	30-Aug-23	03-Jul-23	14-Aug-23	-16					
Electrical		06-FGC-6-1190 PFab 2-Line 6 - 3rd Floor (EL23.47- EL34.47m) (Including Ash and residue to solidification)			60	43	28.33%	08-Sep-22 A	30-Aug-23	03-Jul-23	14-Aug-23	-16					
Mechanical Erection		06-FGC-6-1200 PFab 2-Line 6 - 4th Floor (EL34.47- EL44.22m) (Including Urea to ammonia convertor)			30	30	0%	01-Aug-23*	30-Aug-23	16-Jul-23	14-Aug-23	-16					
E&I Installation		06-FGC-6-1240 PFab 2-Line 6 - E&I Support Installation			45	45	0%	15-Jun-23 A	13-Aug-23	01-Jul-23	14-Aug-23	1					
Electrical		06-FGC-6-1250 PFab 2-Line 6 - E&I Cable Ladder Erection			45	30	33.33%	15-Jun-23 A	29-Jul-23	01-Jul-23	30-Jul-23	1					
Structure Erection		06-FGC-6-1280 PFab 2-Line 6 - 1st Floor (Below EL12.47m) (Including Silencer ID fan)			45	45	0%	30-Jun-23	13-Aug-23	01-Jul-23	14-Aug-23	1					
Mechanical Erection		06-FGC-6-1280 PFab 2-Line 6 - Electrical Heat Tracing Installation (Installation by Yard)			26	26	0%	11-Jul-23*	05-Aug-23	20-Jul-23	14-Aug-23	9					
Electrical		06-FGC-6-1320 PFab 2-Line 6 - MCC room installation (Installation by Yard)			25	25	0%	12-Jul-23*	05-Aug-23	21-Jul-23	14-Aug-23	9					
Load out & Shipping		06-FGC-6-1040 PFab 2-Line 6 - Load Out & ready to ship			20	20	0%	23-Oct-23*	11-Nov-23	15-Aug-23	03-Sep-23	-69					
Fabrication of Mega Steel Structure		06-FGC-6-1040 PFab 2-Line 6 - Load Out & ready to ship			20	20	0%	23-Oct-23*	11-Nov-23	15-Aug-23	03-Sep-23	-69					
Fabrication of Steel Structure		16-8550 (6E) Fabrication of Steel Structure (FM2) & Delivery			93	24	0%	27-Feb-23 A	23-Jul-23	13-Sep-23	06-Oct-23	75					
Off-site Fabrication of Turbine Modules		16-8560 (6E) Fabrication of Steel Structure (FM3) & Delivery			386	78	20%	17-Apr-23 A	23-Jul-23	13-Sep-23	06-Oct-23	75					
Fabrication of Module (Power Island)		06-4240(6) Turbine Module 1 - Delivery			386	78	20%	30-Oct-21 A	15-Sep-23	04-Jun-23	20-Aug-23	-26					
Turbine Module 1		06-4040-1(M55) Turbine Module 1 - TBS Tower 1 Erection & Installation			216	4	0%	06-Jan-23 A	04-Jul-23	30-Jun-23	03-Jul-23	0					
Turbine Module 2		06-4240(6) Turbine Module 2 - TBS Tower 2 Fabrication			386	63	73.33%	20-Oct-22 A	31-Aug-23	04-Jun-23	05-Aug-23	-26					
Delivery		06-4240-1(M55) Turbine Module 2 - TBS Tower 2 Erection & Installation			60	16	33.33%	20-Oct-22 A	15-Jul-23	18-Jun-23	03-Jul-23	-12					

-  Remaining Work
-  Actual Work
-  Critical Remaining Work
-  Milestone
-  Actual Milestone
-  Critical Milestone

Activity ID	Activity Name	Original Duration	Remaining Duration	Activity % Complete	Current Start	Current Finish	Late Start	Late Finish	Total Float	M67 Remarks	2023			
											Jun 67	Jul 68	Aug 69	Sep 70
06-4280(6)	Turbine Module 2 - Delivery	33	33	0%	30-Jul-23	31-Aug-23	04-Jul-23	05-Aug-23	-26					
Turbine Module 3														
06-4440(6)	Turbine Module 3 - TBS Tower 3 Fabrication	60	30	50%	30-Oct-21 A	15-Sep-23	19-Jun-23	20-Aug-23	-26					
06-4440-1(M55)	Turbine Module 3 - TBS Tower 3 Erection & Installation	45	30	33.33%	01-Mar-23 A	29-Jul-23	19-Jun-23	18-Jul-23	-11					
06-4480(6)	Turbine Module 3 - Delivery	33	33	0%	14-Aug-23	15-Sep-23	19-Jul-23	20-Aug-23	-26					
Procurement for ACC Units														
06-1120-2	Off-site Fabrication of ACC-3 Units	178	60	66.29%	28-Feb-22 A	28-Aug-23	07-Aug-23	11-Dec-23	105					
06-1120-1	Off-site Fabrication of ACC-2 Units	178	0	100%	28-Feb-22 A	30-Jun-23	11-Nov-23	11-Nov-23	135					
06-1130	Factory Acceptance Test (FAT) for ACC-1	60	0	100%	28-Sep-22 A	30-Jun-23	11-Dec-23	11-Dec-23	165					
Procurement for CCCW Building Equipment														
06-1420(1)	Factory Acceptance Test (FAT)	60	56	6.67%	23-Feb-23 A	24-Aug-23	05-Oct-23	29-Nov-23	97					
Procurement for Mechanical Treatment Plant Building Plant Equipment														
06-1160-1(1)	Mechanical Equipment Procurement (Incl. FAT)	217	33	84.79%	30-Jun-22 A	01-Aug-23	06-Jul-23	07-Aug-23	6					
06-1150-1(1)	Mechanical Equipment Material Submission and Approval	180	0	100%	30-Jun-22 A	30-Jun-23	07-Aug-23	07-Aug-23	39					
06-1150-2(1)	Pipe Material Submission and Approval	180	0	100%	30-Jun-22 A	30-Jun-23	07-Aug-23	07-Aug-23	39					
06-1160-2(1)	Pipe Material Procurement (Incl. FAT)	180	18	90%	30-Jun-22 A	17-Jul-23	21-Jul-23	07-Aug-23	21					
06-1150-3(1)	Electrical and Instrumentation Material Submission and Approval	180	0	100%	30-Jun-22 A	30-Jun-23	06-Sep-23	06-Sep-23	69					
06-1160-3(1)	Electrical and Instrumentation Material Procurement (Incl. FAT)	180	63	65%	08-Dec-22 A	31-Aug-23	06-Jul-23	06-Sep-23	6					
Procurement for Wastewater Treatment Plant Equipment														
06-1200-1(1)	Mechanical Equipment Procurement (Incl. FAT)	0	0	0%	30-Jun-23	30-Jun-23	25-Aug-23	25-Aug-23	57					
06-1190-1(1)	Mechanical Equipment Material Submission and Approval	90	31	65.56%	23-Jun-22 A	30-Jul-23	26-Jul-23	25-Aug-23	26					
06-1190-2(1)	Pipe Material Submission and Approval	90	31	65.56%	23-Jun-22 A	30-Jul-23	26-Jul-23	25-Aug-23	26					
06-1200-2(1)	Pipe Material Procurement (Incl. FAT)	0	0	0%	30-Jun-23	30-Jun-23	25-Aug-23	25-Aug-23	57					
06-1190-3(1)	Electrical and Instrumentation Material Submission and Approval	90	31	65.56%	29-Jul-22 A	13-Aug-23	26-Jul-23	25-Aug-23	12					
06-1200-3(1)	Electrical and Instrumentation Material Procurement (Incl. FAT)	0	60	0%	09-Aug-22 A	12-Sep-23	27-Jul-23	24-Sep-23	12					
06-1220	Delivery to Site	60	60	0%	14-Aug-23	12-Oct-23	26-Aug-23	24-Oct-23	12					
Procurement for Desal & Demin Plant Equipment														
06-1230-1(1)	Mechanical Equipment Material Submission and Approval	90	30	66.67%	08-Jan-20 A	27-Oct-23	07-Jul-23	25-Mar-24	150					
06-1230-2(1)	Pipe Material Submission and Approval	90	30	66.67%	08-Jan-20 A	28-Aug-23	07-Jul-23	05-Aug-23	-23					
06-1230-3(1)	Electrical and Instrumentation Material Submission and Approval	90	30	66.67%	16-Apr-20 A	29-Jul-23	07-Jul-23	05-Aug-23	7					
06-1240-1(1)	Mechanical Equipment Procurement (Incl. FAT)	60	30	50%	01-Jun-22 A	29-Jul-23	05-Sep-23	04-Oct-23	67					
06-1240-2(1)	Pipe Material Procurement (Incl. FAT)	60	60	0%	29-Aug-23	27-Oct-23	06-Aug-23	04-Oct-23	-23					
06-1240-3(1)	Electrical and Instrumentation Material Procurement (Incl. FAT)	60	60	0%	29-Aug-23	27-Oct-23	06-Aug-23	04-Oct-23	-23					
06-1260-1(M55)	WTP chemical storage tank Material Submission and Approval	120	30	75%	21-Apr-22 A	29-Jul-23	26-Jan-24	24-Feb-24	210					
06-1260-2(M55)	WTP chemical storage tank Procurement (Incl. FAT)	180	30	83.33%	22-Apr-22 A	28-Aug-23	25-Feb-24	25-Mar-24	210					
Procurement for HV Transformers and Associated Equipment														
Procurement of Transformers & EDG														
06-1290(1)	Factory Acceptance Test (FAT)	120	120	0%	30-Jun-23	27-Oct-23	23-Jul-23	19-Nov-23	23					
Procurement of Switchboard/Pannels and Cables														
06-2090(1)	Material Submission and Approval	60	6	90%	31-May-22 A	05-Jul-23	17-Jul-23	22-Jul-23	17					
06-2100(1)	Material & Equipment Procurement	240	60	75%	31-May-22 A	03-Sep-23	23-Jul-23	03-Sep-23	17					
06-2110(1)	Factory Acceptance Test (FAT)	90	90	0%	06-Jul-23	03-Oct-23	23-Jul-23	20-Oct-23	17					
Procurement for Control SCADA Systems														
06-1310	Scada System Procurement, Panel Assembly & Wiring	140	30	78.57%	23-May-22 A	29-Jul-23	23-Jul-23	21-Aug-23	23					
06-1330	Factory Acceptance Test (FAT)	120	120	0%	30-Jul-23	26-Nov-23	22-Aug-23	19-Dec-23	23					
Procurement for Onshore Crane at Berth														
06-1350	Supplier Submission and Approval	60	2	96.67%	04-Dec-22 A	01-Jul-23	30-Jul-23	31-Jul-23	30					
06-1360	Material & Equipment Procurement	300	300	0%	02-Jul-23	26-Apr-24	01-Aug-23	26-May-24	30					
Procurement and Off-site Fabrication of Pipe Bridges (Incl. Pipings)														
Fabrication of Pipe Rack (Prefab.3)														
Pipe Rack 1														
06-5030(6)	Pre-commissioning (FAT)	31	2	93.55%	02-Mar-23 A	01-Jul-23	11-Apr-23	12-Apr-23	-80					
Pipe Rack 2														
06-5100(6)	Pre-commissioning (FAT)	31	0	100%	02-Mar-23 A	30-Jun-23	12-Apr-23	12-Apr-23	-78					
Pipe Rack 3														
06-5160(6)	Piping installation	61	0	100%	17-Apr-22 A	30-Sep-23	12-Mar-23	13-Jun-23	-109					
06-5170(6)	Pre-commissioning (FAT)	31	31	0%	30-Jun-23	30-Jul-23	13-Mar-23	12-Apr-23	-109					
06-5190(6)	Load out & ready to ship	31	31	0%	31-Jul-23	30-Aug-23	13-Apr-23	13-May-23	-109					
06-5200(6)	Pipe Rack 2 & 3 Delivery	31	31	0%	31-Aug-23	30-Sep-23	14-May-23	13-Jun-23	-109					
Fabrication of Pipe Bridge B														
Pipe Bridge B Between CCCW and Turbine Hall														
06-5320(6)	Piping installation	46	15	67.39%	03-Jun-23 A	14-Jul-23	13-Jul-23	27-Jul-23	13					
06-5300(6)	Structure Cutting, Painting & Pre-assembly	180	0	100%	15-Oct-21 A	30-Jun-23	27-Jul-23	27-Jul-23	28					
06-5330(6)	Pre-commissioning (FAT)	31	31	0%	15-Jul-23	14-Aug-23	28-Jul-23	27-Aug-23	13					
06-5340(6)	Load out & ready to ship	15	15	0%	15-Aug-23	29-Aug-23	28-Aug-23	11-Sep-23	13					
Pipe bridge B1 & B2 on the Roof of Turbine Hall														

■ Remaining Work ◆ Actual Milestone
■ Actual Work ◆ Critical Milestone
■ Critical Remaining Work
◆ Milestone

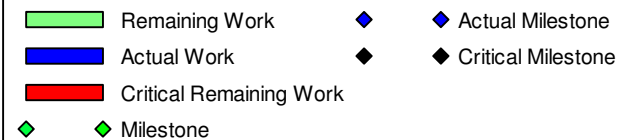
Main project schedule table with columns: Activity ID, Activity Name, Original Duration, Remaining Duration, Activity % Complete, Current Start, Current Finish, Late Start, Late Finish, Total Float, M67 Remarks, and monthly progress bars for 2023 (Jun 67, Jul 68, Aug 69, Sep 70).

3-Month Rolling Programme (June 2023)

Legend for milestones and work status: Remaining Work (blue square), Actual Work (orange square), Critical Remaining Work (red square), Milestone (green diamond), Actual Milestone (orange diamond), Critical Milestone (red diamond).

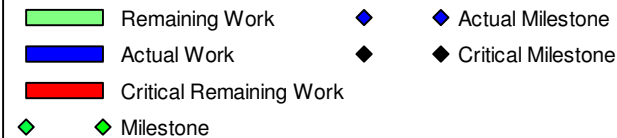
Activity ID	Activity Name	Original Duration	Remaining Duration	Activity % Complete	Current Start	Current Finish	Late Start	Late Finish	Total Float	M&R Remarks	2023			
											Jun 67	Jul 68	Aug 69	Sep 70
Turbine Hall														
06-8130	Precasting of Concrete Panels	45	45	0%	30-Jun-23	13-Aug-23	29-Aug-23	12-Oct-23	60					
Process Building														
06-8160	Precasting of Concrete Panels	60	60	0%	30-Jun-23	28-Aug-23	02-Mar-23	30-Apr-23	-120					
06-8170	Factory Acceptance Test (FAT)	60	60	0%	15-Jul-23	12-Sep-23	17-Mar-23	15-May-23	-120					
06-8180	Delivery to Site	30	30	0%	29-Aug-23	27-Sep-23	01-May-23	30-May-23	-120					
Procurement for Marine Vessels & Vehicles														
06-8200(6D)10	Material Submission and Approval	30	30	0%	30-Jun-23	29-Jul-23	29-Jun-23	28-Jul-23	-1					
06-8210-1(6D)	Material & Equipment Procurement	150	150	0%	30-Jul-23	26-Dec-23	29-Jul-23	25-Dec-23	-1					
Procurement for IWMF Equipments for BS Works														
06-8310(6E)	Material & Equipment Procurement	60	3	95%	11-Apr-23 A	02-Jul-23	19-May-24	21-May-24	324					
Off-site Prefabrication of Steel Grating Platform for Chimney														
06-8310(6F)	Prefabrication of Steel Grating Platform	60	60	0%	30-Jun-23	28-Aug-23	20-Aug-23	18-Oct-23	51					
Delivery of Cast-in pipes, Fittings and Anchor Bolts for Structures (if applicable)														
04-1840(6F)	Mechanical Treatment Plant & Water Treatment Plant (90d)	0	0	0%	30-Jun-23		23-May-23		-38					
04-1805(6F)	Wastewater Treatment Plant (30d)	0	0	0%	30-Jun-23		19-Jul-23		19					
04-1830(6F)	Chimney (30d)	0	0	0%	18-Nov-23		21-Jul-23		-120					
04-1860(6F)	Administration Building and Viewing Gallery (90d)	0	0	0%	29-Jul-23		04-Aug-23		6					
Maritime Works														
Marine Construction														
Phase I - Construction of Perimeter Seawalls														
Seawall and Berth at DCM Area														
Seawall Structural Works														
08-1115(3)	Caisson infill, Solid ballast, toe protection, precast concrete blocks ..etc Laying	250	63	74.8%	30-Nov-19 A	31-Aug-23	03-Jan-24	05-Mar-24	187					
Remain Works														
08-1120-2(M55)	Construction of Seawall and Wave Wall Extension from +3mPD to Deck Level for Seawall B No. C1 & C2 (Caisson A2 & A3)	60	30	50%	31-May-22 A	29-Jul-23	13-Feb-24	13-Mar-24	228					
08-1120	Construction of Seawall and Wave Wall Extension from +3mPD to Deck Level for Seawall A	220	120	45.45%	10-Oct-21 A	27-Oct-23	07-Dec-23	04-Apr-24	160					
08-1120-1(6)	Construction of Seawall and Wave Wall Extension from +3mPD to Deck Level for Seawall B	220	75	65.91%	10-Oct-21 A	12-Sep-23	21-Jan-24	04-Apr-24	205					
08-1120-4(M55)	Construction of Seawall and Wave Wall Extension from +3mPD to Deck Level for Seawall B No. C73 & C73C1	60	30	50%	31-May-22 A	29-Jul-23	05-May-24	03-Jun-24	310					
Seawall at Dredging Area														
Remain Works														
08-1170	Construction of Seawall and Wave Wall Extension from +3mPD to Deck Level (Bay 1 to Bay 8)	160	43	73%	11-Jul-22 A	12-Aug-23	15-Nov-23	28-Dec-23	139					
Phase II - Reclamation, Breakwater and Berth Construction														
Breakwater														
08-1295(3)	Caisson Infill, Solid ballast, toe protection, precast concrete blocks ..etc Laying	200	50	75%	30-Apr-21 A	18-Aug-23	16-Jan-24	05-Mar-24	200					
Remain Works														
08-1300	Construction of Caissons Extension from +3mPD to Deck Level	120	180	0%	31-May-22 A	26-Dec-23	07-Dec-23	03-Jun-24	160					
Seawall and Berth at Marine Access														
08-1320(5A)	Caisson Infill, Solid ballast, toe protection, precast concrete blocks ..etc Laying	90	23	74.44%	08-Feb-21 A	22-Jul-23	12-Feb-24	05-Mar-24	227					
Seawater Intake Structure														
08-2400(6D)	Construction of Seawater Intake	90	75	16.67%	22-Mar-23 A	12-Sep-23	16-Jun-24	29-Aug-24	352					
Foundation Works														
Administration & Viewing Gallery Bld Foundation														
Administration & Viewing Gallery Bld Piling Works (Driven H-pile)														
09-1080	Pile Load Test	8	8	0%	30-Jun-23	07-Jul-23	06-Jul-23	13-Jul-23	6					
Administration & Viewing Gallery Bld Pile Caps Construction														
09-1090	Excavation to Pile Cap Formation	60	60	0%	08-Jul-23	05-Sep-23	14-Jul-23	11-Sep-23	6					
09-1110	Pile Caps Construction	90	90	0%	22-Jul-23	19-Oct-23	28-Jul-23	25-Oct-23	6					
Sky Deck Foundation														
Sky Deck Piling Works (Driven H-pile)														
09-2705(M62)	Driven H Pile Installations (23 nrs ~60m(D) @ 60m/d 1 Group)	23	9	60.87%	02-Jun-23 A	08-Jul-23	05-Apr-24	13-Apr-24	280					
Process Building - Waste Bunker & Tipping Hall Bld Foundation														
Process Building Pile Cap Construction														
Pile Cap Stage 1 (Module 1)														
Process Building (Module 1) Tipping Hall														
09-1200	Pile Caps Construction (26nrs 8set @ 1/7d)	23	18	21.74%	15-Jun-23 A	17-Jul-23	06-May-24	23-May-24	311					
Pile Cap Stage 2 (Module 2)														
Process Building (Module 2) Tipping Hall														
09-1210	Excavation to Pile Cap Formation	25	15	40%	15-Jun-23 A	21-Jul-23	18-Apr-24	23-May-24	307					
09-1230	Pile Caps Construction (22nrs 8set @ 1/7d)	20	15	25%	22-Jun-23 A	21-Jul-23	25-Apr-24	09-May-24	293					
09-1220	Pile Cut-off & Capping Plate (51 nrs, 4nr/d)	13	6	53.85%	17-Jun-23 A	17-Jul-23	18-May-24	23-May-24	311					
Pile Cap Stage 3 (Module 3)														
Process Building (Module 3) WWTP														
09-1240	Excavation to Pile Raft Foundation Formation	25	25	0%	30-Jun-23	24-Jul-23	07-Jul-23	31-Jul-23	7					
09-1250	Pile Cut-off & Capping Plate (168 nrs, 10nr/d)	17	17	0%	10-Jul-23	27-Jul-23	22-Jul-23	08-Aug-23	12					

3-Month Rolling Programme (June 2023)



Activity ID	Activity Name	Original Duration	Remaining Duration	Activity % Complete	Current Start	Current Finish	Late Start	Late Finish	Total Float	M67 Remarks	2023			
											Jun 67	Jul 68	Aug 69	Sep 70
09-1260	Pile Caps and Raft Foundation Construction (60m x 24m 4set@100m2/7day)	26	26	0%	15-Jul-23	10-Aug-23	22-Jul-23	17-Aug-23	7			15-Jul-23		10-Aug-23, Pile Caps and Raft Foundation Cor
Process Building (Module 3) Bunker														
09-2440	Pile Caps Construction (60m x 32m 4set@100m2/7day)	21	7	66.67%	09-May-23 A	06-Jul-23	06-Aug-23	12-Aug-23	37					06-Jul-23, Pile Caps Construction (60m x 32m 4set@100m2/7day), Pile Caps C
ACC Equipment Foundation														
ACC Pile Cap Construction														
09-1700	Pile Cut-off & Capping Plate (Module 1)	18	3	83.33%	03-Feb-23 A	02-Jul-23	11-Sep-23	13-Sep-23	73					02-Jul-23, Pile Cut-off & Capping Plate (Module 1), Pile Cut-off & Capping Plate (Mo
Turbine Hall Bid Foundation														
Turbine Hall Pile Caps Construction														
Electrical Bid & TBS1														
09-1770-1(M58)	Install anchor bolts & Floor Finishes for TBS1 @+6.3mPD (Post-drilling)	14	14	0%	30-Jun-23	13-Jul-23	29-Jul-23	11-Aug-23	29			30-Jun-23		13-Jul-23, Install anchor bolts & Floor Finishes for TBS1 @+6.3mPD (Po
TBS2 & 3														
09-1770-2(6G)	Pile Cut-off & Capping Plate (121 nrs, @10nr/d)	12	12	0%	13-Sep-23	24-Sep-23	25-Apr-23	06-May-23	-141					13-Sep-23, 24-
09-1770-3(M62)	Excavation & construction of 4.2x5.5m pit for TBS2&3 @2mPD	21	21	0%	13-Sep-23	03-Oct-23	25-Apr-23	15-May-23	-141					13-Sep-23, 24-
09-1780	Pile Caps Construction	14	14	0%	25-Sep-23	08-Oct-23	07-May-23	20-May-23	-141					25-Sep-23, 24-
Compressor & CCCW Bid Foundation														
CCCW Pile Caps Construction														
09-2340	Excavation to Pile Cap Formation	43	10	76.74%	06-Feb-23 A	09-Jul-23	08-Jul-23	17-Jul-23	8					09-Jul-23, Excavation to Pile Cap Formation, Excavation to Pile Cap Formati
09-2350	Pile Cut-off & Capping Plate (68 nrs, @10nr/d)	28	10	64.29%	14-Feb-23 A	10-Jul-23	09-Jul-23	18-Jul-23	8					10-Jul-23, Pile Cut-off & Capping Plate (68 nrs, @10nr/d), Pile Cut-off & Cap
09-2350-1(6)	Pile Caps Construction to +5.85mPD (9 nrs, @0.2nr/d)	45	30	33.33%	21-Feb-23 A	29-Jul-23	09-Jul-23	07-Aug-23	9					29-Jul-23, Pile Caps Construction to +5.85mPD (9 nrs, @
09-2360	Ground Beam Construction to +6.25mPD	45	45	0%	30-Jun-23	13-Aug-23	09-Jul-23	22-Aug-23	9			30-Jun-23		13-Aug-23, Ground Beam Construction to +
Mechanical Treatment Plant & Water Treatment Plant Bid Foundation														
Mechanical Treatment Plant & Water Treatment Plant Piling Works														
Mechanical Treatment Plant & Water Treatment Plant (Driven H-pile)														
09-1870	Driven H Pile Installations (208 nrs ~45m(D), @60m/d 1 Group)	156	5	96.79%	08-Jan-23 A	04-Jul-23	18-May-23	22-May-23	-43					Driven H Pile Installations (208 nrs ~45m(D), @60m/d 1 Group), 04-Jul-23, 04-Jul
09-1870-1(M54)	Driven H Pile Installations (174 nrs ~45m(D), @60m/d 1 Group)	131	5	96.18%	23-Dec-22 A	04-Jul-23	18-May-23	22-May-23	-43					Driven H Pile Installations (174 nrs ~45m(D), @60m/d 1 Group), 04-Jul-23, 04-Jul
09-1880	Pile Load Test	8	8	0%	05-Jul-23	12-Jul-23	23-May-23	30-May-23	-43			05-Jul-23		12-Jul-23, Pile Load Test
Mechanical Treatment Plant & Water Treatment Plant Bid Pile Cap Construction														
Mechanical Treatment Plant Pile Cap Construction														
09-1920	Excavation to Pile Cap Formation	25	25	0%	30-Jun-23	24-Jul-23	06-May-23	30-May-23	-55			30-Jun-23		24-Jul-23, Excavation to Pile Cap Formation
09-1930	Pile Cut-off & Capping Plate (410nrs, @20/d)	21	21	0%	07-Jul-23	27-Jul-23	13-May-23	02-Jun-23	-55			07-Jul-23		27-Jul-23, Pile Cut-off & Capping Plate (410nrs, @20/d)
09-1940	Pile Caps Construction	60	60	0%	10-Jul-23	07-Sep-23	16-May-23	14-Jul-23	-55			10-Jul-23		07-Sep-23, Pile Cap
Water Treatment Plant Pile Cap Construction														
09-1950	Excavation to Pile Cap Formation	28	28	0%	05-Jul-23	01-Aug-23	29-May-23	25-Jun-23	-37			05-Jul-23		01-Aug-23, Excavation to Pile Cap Formation
09-1960	Pile Cut-off & Capping Plate	14	14	0%	22-Jul-23	04-Aug-23	15-Jun-23	28-Jun-23	-37			22-Jul-23		04-Aug-23, Pile Cut-off & Capping Plate
09-1970	Pile Caps Construction	60	60	0%	29-Jul-23	26-Sep-23	22-Jun-23	20-Aug-23	-37					29-Jul-23, 20-Aug-23
IWMF Substation Building Foundation														
IWMF Substation Pile Cap Construction														
09-2020	Pile Caps Construction (24nrs, 4sets @1nr/7d)	30	0	100%	17-Mar-23 A	30-Jun-23	13-May-25	13-May-25	684					30-Jun-23, Pile Caps Construction (24nrs, 4sets @1nr/7d), Pile Caps Construction (24
Elevated Drive Way and Associated Structures Foundation														
Elevated Drive Way Piling Works (Driven H-pile)														
09-2030-2(M45)	Driven H Pile Installations Grid RSY - RSAF (74nrs ~55m(D), @60m/d 2 Groups)	34	34	0%	30-Jun-23	02-Aug-23	07-Jul-23	09-Aug-23	7			30-Jun-23		02-Aug-23, Driven H Pile Installations Grid RSY - RSA
09-2030(M57)	Driven H Pile Installations Grid RSA - RSG (248nrs ~50m(D), @60m/d 4 Groups)	52	35	32.69%	15-May-23 A	03-Aug-23	23-Jul-23	26-Aug-23	23					03-Aug-23, Driven H Pile Installations Grid RSA - RS
Elevated Drive Way Pile Cap Construction														
Elevated Drive Way RSA to RSG														
09-2050(M57)	Excavation to Pile Cap Formation	30	30	0%	04-Aug-23	02-Sep-23	27-Aug-23	25-Sep-23	23					04-Aug-23, 02-Sep-23, Excavation to
Elevated Drive Way RSU to RSAF														
09-2710(M57)	Excavation to Pile Cap Formation	30	30	0%	03-Aug-23	01-Sep-23	10-Aug-23	08-Sep-23	7					03-Aug-23, 01-Sep-23, Excavation to
09-2720(M57)	Pile Cut-off & Capping Plate	30	30	0%	17-Aug-23	15-Sep-23	24-Aug-23	22-Sep-23	7					17-Aug-23, 15-Sep-23,
Pipe Bridge Foundation														
Pipe Bridge B														
Pipe Bridge B Pile Caps Construction														
09-2470	Excavation to Pile Cap Formation	21	14	33.33%	02-Feb-23 A	13-Jul-23	31-Jul-23	13-Aug-23	31					13-Jul-23, Excavation to Pile Cap Formation, Excavation to Pile Cap Form
09-2480	Pile Cut-off & Capping Plate (33 nrs, @ 4nr/d)	21	14	33.33%	08-Feb-23 A	20-Jul-23	07-Aug-23	20-Aug-23	31					20-Jul-23, Pile Cut-off & Capping Plate (33 nrs, @ 4nr/d), Pile Cut-
09-2490	Pile Caps Construction to +5.0mPD (33nr, 4set @ 1nr/7d)	30	23	23.33%	14-Feb-23 A	03-Aug-23	12-Aug-23	03-Sep-23	31					03-Aug-23, Pile Caps Construction to +5.0mPD (33nr
Pipe Bridge C														
Pipe Bridge C Pile Caps Construction														
09-2520	Excavation to Pile Cap Formation	21	10	52.38%	02-Jun-23 A	25-Jul-23	05-Sep-23	30-Sep-23	67					09-Jul-23, Excavation to Pile Cap Formation, Excavation to Pile Cap Formati
09-2530	Pile Cut-off & Capping Plate (20 nrs, @ 4nr/d)	5	3	40%	03-Jun-23 A	12-Jul-23	15-Sep-23	17-Sep-23	67					12-Jul-23, Pile Cut-off & Capping Plate (20 nrs, @ 4nr/d), Pile Cut-off & Ca
09-2540	Pile Caps Construction and install anchor bolts (20 nr, 4set @ 1nr/7d)	21	10	52.38%	05-Jun-23 A	25-Jul-23	21-Sep-23	30-Sep-23	67					25-Jul-23, Pile Caps Construction and install anchor bolts (20
Heavy Load Access														
Demolition														
09-3030(6D)	Removal of Sub Base & Road Base & Foundation Works (Stage 2)	50	50	0%	02-Oct-23	20-Nov-23	13-Jun-23	01-Aug-23	-111					02-Oct-23
Superstructural Works														
Process Building - Waste Bunker & Tipping Hall Bid Structure														
Waste & Ash Bunker Bid Structure														
Process Building (Module 1) Waste & Ash Bunker Bid Structure														

3-Month Rolling Programme (June 2023)



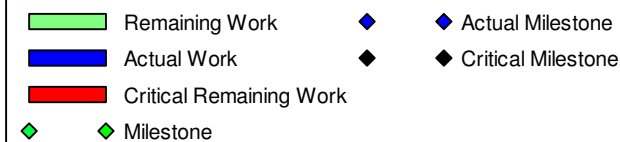
Activity ID	Activity Name	Original Duration	Remaining Duration	Activity % Complete	Current Start	Current Finish	Late Start	Late Finish	Total Float	M67 Remarks	2023			
											Jun 67	Jul 66	Aug 69	Sep 70
10-1130	Beam & Slab to +15.0mPD	30	18	40%	02-Jun-23 A	17-Jul-23	23-Jun-23	10-Jul-23	-7					
10-1120	Column & Wall to +20.0mPD	23	23	0%	18-Jul-23	09-Aug-23	11-Jul-23	02-Aug-23	-7					
10-1140	Beam & Slab to +20.0mPD	18	18	0%	10-Aug-23	27-Aug-23	03-Aug-23	20-Aug-23	-7					
10-1160	Beam & Slab to +28.0mPD	40	40	0%	28-Aug-23	06-Oct-23	21-Aug-23	29-Sep-23	-7					
Process Building (Module 2) Waste & Ash Bunker Bld Structure														
10-1220	Beam & Slab to +6.0mPD	44	30	31.82%	11-Jun-23 A	29-Jul-23	18-Jun-23	17-Jul-23	-12					
10-1240	Beam & Slab to +15.0mPD	47	47	0%	30-Jul-23	14-Sep-23	18-Jul-23	02-Sep-23	-12					
Process Building (Module 3) Waste & Ash Bunker Bld Structure														
10-1320	Column & Wall to +6.0mPD	40	10	75%	07-Jun-23 A	09-Jul-23	03-Aug-23	12-Aug-23	34					
10-1330	Beam & Slab to +6.0mPD	30	30	0%	10-Jul-23	08-Aug-23	13-Aug-23	11-Sep-23	34					
Tipping Hall Bld Structure														
10-3000(6F)	Slab to +2.0mPD	20	20	0%	15-Aug-23	03-Sep-23	18-Aug-23	06-Sep-23	3					
10-3010(6F)	Slab to +3.5mPD	10	10	0%	25-Aug-23	03-Sep-23	28-Aug-23	06-Sep-23	3					
Process Building - Boiler & Flue Gas Treatment Bld Structure														
Steel Structure														
Boiler Building Steel Structure														
Process Building (Module 2) Steel Structure Erection														
10-1680	Roof Cladding Installation	60	60	0%	30-Jun-23	28-Aug-23	16-Mar-23	14-May-23	-106					
Process Building (Module 3) Process Building Steel Structure Erection														
10-1720	Roof Cladding Installation	60	60	0%	29-Aug-23	27-Oct-23	22-Aug-23	20-Oct-23	-7					
Flue Gas Treatment Bld Steel Structure														
Process Building (Module 2) Steel Structure Erection														
10-1770	Erection of Mega Columns (1nos @30d /column /gang x 1)	30	3	90%	18-Mar-23 A	02-Jul-23	28-Apr-23	30-Apr-23	-63					
10-1780	Steel Roof Truss Ground Assembly Works	30	3	90%	18-Mar-23 A	02-Jul-23	28-Apr-23	30-Apr-23	-63					
10-1790	Steel Roof Truss Lifting (FM2)	14	14	0%	15-Aug-23	28-Aug-23	01-May-23	14-May-23	-106					
10-1800	Roof Cladding Installation	30	30	0%	03-Sep-23	02-Oct-23	15-May-23	13-Jun-23	-111					
10-1890	Facade Structural Frame Installation at Module 2	45	45	0%	02-Sep-23	16-Oct-23	31-May-23	14-Jul-23	-94					
Process Building (Module 3) Steel Structure Erection														
10-1810	Erection of Mega Columns (1nos @30d /column /gang x 1)	30	15	50%	17-Apr-23 A	14-Jul-23	22-Sep-23	06-Oct-23	84					
10-1820	Steel Roof Truss Ground Assembly Works	30	15	50%	17-Apr-23 A	14-Jul-23	22-Sep-23	06-Oct-23	84					
Turbine Hall Bld Structure														
Turbine Hall Electrical Bld														
10-1920	Column & Wall to +15.0mPD	10	10	0%	12-Jun-23 A	09-Jul-23	26-Jun-23	05-Jul-23	-4					
10-1930	Beam & Slab to +15.0mPD	10	10	0%	10-Jul-23	19-Jul-23	06-Jul-23	15-Jul-23	-4					
10-1940	Column & Wall to +19.5mPD	10	10	0%	20-Jul-23	29-Jul-23	16-Jul-23	25-Jul-23	-4					
10-1950	Beam & Slab to +19.5mPD	10	10	0%	30-Jul-23	08-Aug-23	26-Jul-23	04-Aug-23	-4					
10-1960	Column & Wall to +23.5mPD	10	10	0%	09-Aug-23	18-Aug-23	05-Aug-23	14-Aug-23	-4					
10-1970	Beam & Slab to +23.5mPD	10	10	0%	22-Aug-23	31-Aug-23	18-Aug-23	27-Aug-23	-4					
10-1980	Column & Wall to +28.0mPD	10	10	0%	01-Sep-23	10-Sep-23	28-Aug-23	06-Sep-23	-4					
Turbine Hall TBS1														
10-2310	Column & Wall to +15.0mPD & +23.5mPD	30	12	60%	26-May-23 A	11-Jul-23	12-Jun-23	23-Jun-23	-18					
10-2320	Beam & Slab to +28.0mPD	21	21	0%	12-Jul-23	01-Aug-23	24-Jun-23	14-Jul-23	-18					
STG Foundation (PC1)														
10-1990-1(M58)	STG Foundation construction and install anchor bolts @ +9.5	21	21	0%	30-Jun-23	30-Jul-23	08-Jul-23	07-Aug-23	8					
10-1990-2(M58)	STG Foundation construction and install anchor bolts @ +10.77	10	10	0%	21-Jul-23	30-Jul-23	29-Jul-23	07-Aug-23	8					
Turbine Hall TBS2 & 3														
10-2000	Ground Beam and Slab to +6.0mPD and install anchor bolts & Floor Finishes for TBS2 & 3 @ +6.3mPD	30	30	0%	09-Oct-23	07-Nov-23	21-May-23	19-Jun-23	-141					
10-2010	Column & Wall to +15.0mPD & +23.5mPD	30	30	0%	08-Nov-23	07-Dec-23	20-Jun-23	19-Jul-23	-141					
10-2020	Beam & Slab to +28.0mPD	30	30	0%	02-Dec-23	31-Dec-23	14-Jul-23	12-Aug-23	-141					
STG Foundation (PC2)														
10-1990-3(M58)	STG Foundation construction and install anchor bolts @ +9.5	21	21	0%	25-Sep-23	15-Oct-23	15-Jul-23	04-Aug-23	-72					
10-1990-4(M58)	STG Foundation construction and install anchor bolts @ +10.77	10	10	0%	16-Oct-23	25-Oct-23	05-Aug-23	14-Aug-23	-72					
STG Foundation (PC3)														
10-1990-5(M58)	STG Foundation construction and install anchor bolts @ +9.5	21	21	0%	25-Sep-23	15-Oct-23	20-Jul-23	19-Aug-23	-67					
10-1990-6(M58)	STG Foundation construction and install anchor bolts @ +10.77	10	10	0%	16-Oct-23	25-Oct-23	10-Aug-23	19-Aug-23	-67					
Compressor & CCCW Bld Structure														
10-2030	Slab to +6.5mPD & install anchor bolts	21	14	33.33%	11-Jun-23 A	13-Jul-23	16-Aug-23	29-Aug-23	47					
10-2040	Column & Wall to +14.0mPD	21	21	0%	14-Aug-23	03-Sep-23	23-Aug-23	12-Sep-23	9					
Chimney Structure														
10-2059	Excavation to Formation Level and Install Tower Crane	60	60	0%	19-Oct-23	17-Dec-23	21-Jun-23	19-Aug-23	-120					
10-2060	Chimney RC Structure (1st to 46th Pour)	120	120	0%	18-Dec-23	15-Apr-24	20-Aug-23	17-Dec-23	-120					
Mechanical Treatment Plant Bld Structure														
10-2090	Ground Slab @+6.5mPD	21	21	0%	08-Sep-23	28-Sep-23	15-Jul-23	04-Aug-23	-55					
10-2095	Column & Wall to +13.5mPD	21	21	0%	29-Sep-23	19-Oct-23	05-Aug-23	25-Aug-23	-55					
10-2096	1/F Slab @+13.5mPD	21	21	0%	20-Oct-23	09-Nov-23	26-Aug-23	15-Sep-23	-55					

3-Month Rolling Programme (June 2023)

■ Remaining Work ◆ Actual Milestone
■ Actual Work ◆ Critical Milestone
■ Critical Remaining Work
◆ Milestone

Activity ID	Activity Name	Original Duration	Remaining Duration	Activity % Complete	Current Start	Current Finish	Late Start	Late Finish	Total Float	M&R Remarks	2023			
											Jun 67	Jul 68	Aug 69	Sep 70
Water Treatment Plant Bid Structure														
10-2300(6F)	WTP Lower Ground Slab @+3.9mPD	21	21	0%	28-Sep-23	18-Oct-23	21-Aug-23	10-Sep-23	-38					
IWMF Substation Structure														
10-2180	Column, wall, beam and Slab to +9.0mPD	21	25	0%	16-May-23 A	24-Jul-23	12-Jun-23	06-Jul-23	-18					
10-2170	Ground Slab and Beam to +6mPD	21	7	66.67%	31-Mar-23 A	06-Jul-23	25-Jul-23	31-Jul-23	25					
Pipebridge Structure														
Pipe Rack														
10-2330(6)	Erection of Pipe Rack 2 (Pipe Rack C2)	90	90	0%	12-Oct-23	09-Jan-24	14-Jun-23	11-Sep-23	-120					
Architectural Builders Works & Finishes														
Process Building - Boiler & Flue Gas Bid ABWF Works														
11-1540 (M63)	Facade Panels Erection for Module 2 (344pcs. @4pcs/d)	86	86	0%	28-Sep-23	22-Dec-23	31-May-23	24-Aug-23	-120					
Building Services Installation														
IWMF Substation BS Works														
12-1490	Fire Service System	90	90	0%	25-Jul-23	22-Oct-23	07-Jul-23	04-Oct-23	-18					
Process Equipment Installation														
Process Building - Waste Bunker & Tipping Hall Bid Process Equipment Installation														
Piping and Instrument Installation and Connection Works														
Process Building (Module 1)														
12-3000(6F)	Embedded Piping Installation	180	180	0%	30-Jun-23	26-Dec-23	07-Jul-23	02-Jan-24	7					
Process Building (Module 2)														
12-3040(6F)	Embedded Piping Installation	180	180	0%	30-Jun-23	26-Dec-23	13-Aug-23	08-Feb-24	44					
Process Building (Module 3)														
12-3080(6F)	Embedded Piping Installation	180	180	0%	30-Jun-23	26-Dec-23	20-Aug-23	15-Feb-24	51					
Process Building (WWTP)														
12-3120(6F)	Delivery of Embedded Piping above +2 to +10mPd (30days)	0	0	0%		30-Jun-23		18-Jul-23	19					
12-3140(6F)	Delivery of Embedded Piping above +10.1 to +12.5mPd (30days)	0	0	0%		15-Jul-23		22-Jul-23	7					
12-3160(6F)	Piping Installation Works	60	60	0%	30-Jun-23	28-Aug-23	08-Aug-23	06-Oct-23	39					
Process Building (WWTP)														
13-1010-1(6)	WWTP Piping and instrument installation	145	145	0%	30-Jun-23	21-Nov-23	08-Aug-23	30-Dec-23	39					
13-1010-2(6)	WWTP Electrical Equipment installation & Cable pulling and termination	145	145	0%	07-Jul-23	28-Nov-23	15-Aug-23	06-Jan-24	39					
Process Building - Boiler House & Flue Gas Treatment Bid Process Equipment Installation														
Process Building (Installation TPU Module)														
TPU Train 1														
13-1035(M63)-2	TPU-1 Welding to Base Plate	20	7	65%	17-Jun-23 A	03-Nov-23	30-Jun-23	03-Nov-23	0					
13-1040	Boiler Condition Check and Repair	70	70	0%	30-Jun-23	07-Sep-23	27-Jul-23	04-Oct-23	27					
13-1050	Remaining Equipment Installation at GL	120	120	0%	07-Jul-23	03-Nov-23	07-Jul-23	03-Nov-23	0					
TPU Train 2														
13-1125(M63)-2	TPU-2 Welding to Base Plate	20	7	65%	17-Jun-23 A	06-Jul-23	30-Jun-23	06-Jul-23	0					
13-1130	Boiler Condition Check and Repair	70	70	0%	30-Jun-23	07-Sep-23	27-Jul-23	04-Oct-23	27					
13-1140	Remaining Equipment Installation at GL	120	120	0%	07-Jul-23	03-Nov-23	07-Jul-23	03-Nov-23	0					
TPU Train 3														
13-1210	Delivery, inspection and Transport Boiler Train to Position by SPMT (TPU Train 3)	10	10	0%	13-Jul-23	22-Jul-23	22-Feb-23	03-Mar-23	-141					
13-1215(M63)-1	Removal of Temporary Steel from Prefab from TPU-3	14	14	0%	23-Jul-23	05-Aug-23	13-Mar-23	26-Mar-23	-132					
13-1215(M63)-2	TPU-3 Welding to Base Plate	20	20	0%	06-Aug-23	25-Aug-23	22-Jul-23	10-Aug-23	-15					
13-1230	Remaining Equipment Installation at GL	121	121	0%	26-Aug-23	24-Dec-23	11-Aug-23	09-Dec-23	-15					
TPU Train 4														
13-1300	Delivery, inspection and Transport Boiler Train to Position by SPMT (TPU Train 4)	10	10	0%	05-Aug-23	09-Jan-24	17-Mar-23	10-Dec-23	-30					
13-1305 (M63)-1	Removal of Temporary Steel from Prefab TPU-4	8	8	0%	15-Aug-23	22-Aug-23	06-Apr-23	13-Apr-23	-131					
13-1305 (M63)-2	TPU-4 Welding to Base Plate	20	20	0%	23-Aug-23	11-Sep-23	24-Jul-23	12-Aug-23	-30					
13-1320	Remaining Equipment Installation at GL	120	120	0%	12-Sep-23	09-Jan-24	13-Aug-23	10-Dec-23	-30					
TPU Train 5														
13-1390	Delivery, inspection and Transport Boiler Train to Position by SPMT (TPU Train 5)	10	10	0%	12-Oct-23	21-Oct-23	31-May-23	09-Jun-23	-134					
13-1395(M63)-1	Removal of Temporary Steel from Prefab from TPU-5	8	8	0%	22-Oct-23	29-Oct-23	25-Jun-23	02-Jul-23	-119					
13-1395(M63)-2	TPU-5 Welding to Base Plate	20	20	0%	30-Oct-23	18-Nov-23	31-Jul-23	19-Aug-23	-91					
13-1410	Remaining Equipment Installation at GL	120	120	0%	19-Nov-23	17-Mar-24	20-Aug-23	17-Dec-23	-91					
TPU Train 6														
13-1480	Delivery, inspection and Transport Boiler Train to Position by SPMT (TPU Train 6)	10	10	0%	04-Nov-23	13-Nov-23	23-Jun-23	02-Jul-23	-134					
13-1485(M63)-1	Removal of Temporary Steel from Prefab from TPU-6	8	8	0%	14-Nov-23	21-Nov-23	03-Jul-23	10-Jul-23	-134					
13-1485(M63)-2	TPU-6 Welding to Base Plate	20	20	0%	22-Nov-23	11-Dec-23	11-Jul-23	30-Jul-23	-134					
13-1490	Boiler Condition Check and Repair	70	70	0%	14-Nov-23	22-Jan-24	05-Aug-23	13-Oct-23	-101					
13-1500	Remaining Equipment Installation at GL	120	120	0%	12-Dec-23	09-Apr-24	31-Jul-23	27-Nov-23	-134					
Process Building (Installation of Flue Gas Module)														
FGC Train 3														
13-1710	Delivery, inspection and Transport Flue Gas Train to Position by SPMT (FGC Train 3)	10	10	0%	02-Sep-23	18-Sep-23	14-Apr-23	03-Sep-23	-15					
13-1715(M63)-1	Removal of Temporary Steel from Prefab from FGC-3	7	7	0%	12-Sep-23	18-Sep-23	28-Aug-23	03-Sep-23	-15					

3-Month Rolling Programme (June 2023)



Activity ID	Activity Name	Original Duration	Remaining Duration	Activity % Complete	Current Start	Current Finish	Late Start	Late Finish	Total Float	M67 Remarks	2023			
											Jun 67	Jul 68	Aug 69	Sep 70
FGC Train 4														
13-1780	Delivery, inspection and Transport Flue Gas Train to Position by SPMT (FGC Train 4)	10	10	0%	02-Sep-23	11-Sep-23	14-Apr-23	23-Apr-23	-141					
Turbine Hall Bld Equipment Installation														
Turbine Hall Module 1 Installation														
13-2160(6)	Install Maintenance Girder & Crane at Module 1 @+22.247mPd	30	30	0%	02-Aug-23	31-Aug-23	15-Jul-23	13-Aug-23	-18					
13-2119(11)	STG Module 1 Delivery	0	0	0%		06-Aug-23		14-Aug-23	8					
13-2120	STG Module 1 Installation	22	22	0%	02-Sep-23	23-Sep-23	14-Aug-23	05-Sep-23	-18					
Turbine Hall Module 2 Installation														
13-2169(11)	STG Module 2 Delivery	0	0	0%		02-Jan-24		14-Aug-23	-141					
13-2170	STG Module 2 Installation	21	21	0%	03-Jan-24	23-Jan-24	15-Aug-23	04-Sep-23	-141					
13-2210(6)	Install Maintenance Girder & Crane at Module 2 @+22.247mPd	30	30	0%	01-Jan-24	30-Jan-24	13-Aug-23	11-Sep-23	-141					
Turbine Hall Module 3 Installation														
13-2219(11)	STG Module 3 Delivery	0	0	0%		07-Jan-24		19-Aug-23	-141					
13-2220	STG Module 3 Installation	21	21	0%	08-Jan-24	28-Jan-24	20-Aug-23	09-Sep-23	-141					
13-2260(6)	Install Maintenance Girder & Crane at Module 3 @+22.247mPd	30	30	0%	03-Jan-24	01-Feb-24	15-Aug-23	13-Sep-23	-141					
Landscape, External Road and Drains Works														
Underground Utilities Works														
Underground Utility Systems & Cables														
14-1050	Cable Ducting and Landing Jointing bay for CLP Transmission System	90	90	0%	30-Jun-23	27-Sep-23*	04-Jul-23	01-Oct-23	4					
Drainage Works														
Box Culvert														
East Culvert (3.5m x 2.5m x 118m)														
14-2000	Excavation to Formation	60	20	66.67%	06-Jun-23 A	19-Jul-23	12-Jul-23	31-Jul-23	12					
14-2010	Construction of Box Culvert (118m, 1.7m/d)	70	70	0%	15-May-23 A	07-Sep-23	22-Jun-23	30-Aug-23	-8					
Earthing System														
16-1900-2(6)	Installation of Ground Earthing Mesh	180	90	50%	28-Apr-22 A	27-Sep-23	09-Mar-24	06-Jun-24	253					

3-Month Rolling Programme (June 2023)

Remaining Work
 Actual Work
 Critical Remaining Work
 Actual Milestone
 Critical Milestone
 Milestone