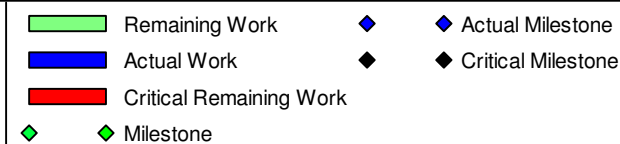


Appendix A Master Programme

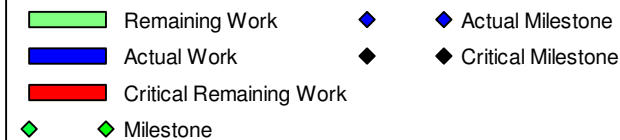
Activity ID	Activity Name	Planned Duration	Remaining Duration	Activity % Complete	Current Start	Current Finish	Late Start	Late Finish	Total Float	M66 Remarks	2023			
											May 66	Jun 67	Jul 68	Aug 69
Programme for Design and Construction Works WP6H-M66														
Key Dates														
02-Jul-23 02-Jul-23 01-Jun-23 01-Jun-23 -31														
Dates of Site Possessions														
02-Jul-23 02-Jul-23 01-Jun-23 01-Jun-23 -31														
01-1160	Possession of Portion 3	0	0	0%	02-Jul-23	02-Jul-23		01-Jun-23	-31		◆ Possession of Portion 3,			
01-1170	Possession of Portion 4	0	0	0%	02-Jul-23	02-Jul-23		01-Jun-23	-31		◆ Possession of Portion 4,			
01-1180	Possession of Portion 5	0	0	0%	02-Jul-23	02-Jul-23		01-Jun-23	-31		◆ Possession of Portion 5,			
Contract Preliminaries														
90 90 03-Jul-23 30-Sep-23 02-Jun-23 30-Aug-23 -31														
Establishment of Environmental Monitoring Stations														
90 90 03-Jul-23 30-Sep-23 02-Jun-23 30-Aug-23 -31														
02-1030	Establishment of Air Quality Monitoring Station at Portion 3 (12m I	90	90	0%	03-Jul-23	30-Sep-23		02-Jun-23	30-Aug-23	-31	03-Jul-23			
02-1040	Establishment of Air Quality Monitoring Station at Portion 4 (12m I	90	90	0%	03-Jul-23	30-Sep-23		02-Jun-23	30-Aug-23	-31	03-Jul-23			
02-1050	Establishment of Air Quality Monitoring Station at Portion 5 (12m I	90	90	0%	03-Jul-23	30-Sep-23		02-Jun-23	30-Aug-23	-31	03-Jul-23			
Licence/Permit Applications														
1815 263 07-Mar-19 A 17-Feb-24 07-Mar-23 12-Jul-25 511														
License/Permit for Construction														
1794 88 07-Mar-19 A 26-Aug-23 31-May-23 12-Jul-25 686														
03-1080	CNP for Percussive Piling Works	613	0	100%	31-Aug-21 A	31-May-23		09-May-24	09-May-24	345	31-May-23, CNP for Percussive Piling Works, CNP for Percussive Piling Works, 31-May-23			
03-1360(2)	CNP for 24Hrs	1634	88	94.61%	07-Mar-19 A	26-Aug-23		16-Apr-25	12-Jul-25	686	26-Aug-23			
03-1370_1(M34)	Landscape and Visual Plan	180	24	86.67%	24-Dec-22 A	23-Jun-23		31-May-23	23-Jun-23	0	Landscape and Visual Plan, 23-Jun-23, 23-Jun-23, Landscape and Visual Plan			
DG Licence														
210 210 31-May-23 26-Dec-23 10-May-23 05-Dec-23 -21														
Day Tank & Fuel Oil Storage (Cat 5)														
210 210 31-May-23 26-Dec-23 10-May-23 05-Dec-23 -21														
03-1400	General Building Plans and FSI Provision Design Submission to F	30	30	0%	31-May-23	29-Jun-23		10-May-23	08-Jun-23	-21	31-May-23 29-Jun-23, General Building Plans and FSI Provision Design Submission to FSD (Cat 5)			
03-1410	DGD and VD Review and Approval of Submission	180	180	0%	30-Jun-23	26-Dec-23		09-Jun-23	05-Dec-23	-21	30-Jun-23			
Chemical Stores (all Cat)														
21 21 31-May-23 20-Jun-23 26-Aug-23 15-Sep-23 87														
03-1480	Plans and FSI Provision Design Submission to FSD	21	21	0%	31-May-23	20-Jun-23		26-Aug-23	15-Sep-23	87	31-May-23 20-Jun-23, Plans and FSI Provision Design Submission to FSD			
Fire Services Installations (FSI) Certificate														
0 0 31-May-23 31-May-23 09-May-23 09-May-23 -21														
Fire Services Installations Certificate Inspection														
0 0 31-May-23 31-May-23 09-May-23 09-May-23 -21														
03-1555-1(5a)	Approval of General Building Plans and FSI Provision Design Sub	0	0	0%	31-May-23	31-May-23		09-May-23	09-May-23	-21	◆ Approval of General Building Plans and FSI Provision Design Submission,			
Air Pollution Control (Specified Processes) License														
300 263 24-Apr-23 A 17-Feb-24 31-May-23 17-Feb-24 0														
03-1750(3)	SP License Application Submissions and review by EPD	300	263	12.33%	24-Apr-23 A	17-Feb-24		31-May-23	17-Feb-24	0				
Boilers and Pressure Vessels License														
312 100 29-Mar-22 A 07-Sep-23 07-Mar-23 13-Oct-23 36														
03-1890(3)	Completion of Boiler off-site fabrication	180	30	83.33%	29-Mar-22 A	29-Jun-23		14-Sep-23	13-Oct-23	106	29-Jun-23, Completion of Boiler off-site fabrication, Completion of Boiler off-site fabrication			
03-1900(3)	Completion of Boiler off-site inspection before delivery	60	60	0%	13-Feb-23 A	07-Sep-23		07-Mar-23	05-May-23	-125				
General Submissions														
1735 90 27-Nov-18 A 28-Aug-23 31-May-23 02-Jan-24 127														
Contractor's Plans Submission and Approval														
1735 90 27-Nov-18 A 28-Aug-23 31-May-23 02-Jan-24 127														
04-1400(1)	Operation Plan (OP)	240	90	62.5%	27-Nov-18 A	28-Aug-23		05-Oct-23	02-Jan-24	127				
04-1450(1)	Asset Management Plan (AMP)	120	74	0%	15-Apr-23 A	12-Aug-23		31-May-23	12-Aug-23	0	Asset Management Plan			
04-1500(1)	Handback Plan (HP)	120	74	0%	15-Mar-23 A	12-Aug-23		31-May-23	12-Aug-23	0	Handback Plan (HP), 12-			
Design Submissions														
1826 180 11-Jul-18 A 26-Nov-23 29-Apr-23 15-Nov-26 1085														
General Building Plan														
669 22 03-Mar-21 A 21-Jun-23 09-May-23 15-Jun-24 360														
04-1600(M42)	Process Building & Wastewater Treatment Plant	135	0	100%	03-Jun-21 A	31-May-23		09-May-23	09-May-23	-21	Process Building & Wastewater Treatment Plant, 31-May-23, 31-May-23, Process Building & Wastewater Treatment Plant			
04-1610(M42)	Turbine Hall Building	135	0	100%	03-Mar-21 A	31-May-23		09-May-23	09-May-23	-21	Turbine Hall Building, 31-May-23, 31-May-23, Turbine Hall Building			
04-1620(M42)	Compressor & CCCW Building	135	0	100%	03-Mar-21 A	31-May-23		09-May-23	09-May-23	-21	Compressor & CCCW Building, 31-May-23, 31-May-23, Compressor & CCCW Building			
04-1630(M42)	Chimney	135	0	100%	03-Mar-21 A	31-May-23		09-May-23	09-May-23	-21	Chimney, 31-May-23, 31-May-23, Chimney			
04-1640(M42)	Mechanical Treatment Plant & Water Treatment Plant	135	0	100%	03-Jun-21 A	31-May-23		09-May-23	09-May-23	-21	Mechanical Treatment Plant & Water Treatment Plant, 31-May-23, 31-May-23, Mechanical Treatment Plant & Water Treatment Plant			
04-1650(M42)	Reception Pavilion	135	0	100%	03-Jun-21 A	31-May-23		09-May-23	09-May-23	-21	Reception Pavilion, 31-May-23, 31-May-23, Reception Pavilion			
04-1660(M42)	Administration Building and Viewing Gallery	135	0	100%	03-Jun-21 A	31-May-23		09-May-23	09-May-23	-21	Administration Building and Viewing Gallery, 31-May-23, 31-May-23, Administration Building and Viewing Gallery			
04-1670(M42)	Elevated Drive Way and Associated Structures	135	0	100%	03-Mar-21 A	31-May-23		09-May-23	09-May-23	-21	Elevated Drive Way and Associated Structures, 31-May-23, 31-May-23, Elevated Drive Way and Associated Structures			
04-1680(M42)	IWMF Substation	135	0	100%	03-Mar-21 A	31-May-23		09-May-23	09-May-23	-21	IWMF Substation, 31-May-23, 31-May-23, IWMF Substation			
04-1690(M46)	ACC Equipment Structure	0	0	0%	31-May-23	31-May-23		09-May-23	09-May-23	-21	31-May-23 31-May-23, ACC Equipment Structure			
04-1730	Weighbridge	135	22	5%	22-Apr-22 A	21-Jun-23		11-Jun-23	02-Jul-23	11	21-Jun-23, Weighbridge, Weighbridge, 21-Jun-23			
04-1740	Seawater Intake Structure	60	3	0%	23-Feb-23 A	02-Jun-23		13-Jun-24	15-Jun-24	379	02-Jun-23, Seawater Intake Structure, Seawater Intake Structure, 02-Jun-23			
AIP Design Package Submissions														
1744 105 11-Jul-18 A 12-Sep-23 29-Apr-23 16-Oct-26 1130														
AIP Ground Treatment, Reclamation, Seawall, Breakwater, Berth (2.2)														
424 60 31-May-21 A 29-Jul-23 24-Jun-23 22-Aug-23 24														
05-2970	Onshore crane Facility (2.2.11)	90	3	5%	11-Apr-22 A	02-Jun-23		30-Jul-23	01-Aug-23	60	02-Jun-23, Onshore crane Facility (2.2.11), Onshore crane Facility (2.2.11), 02-Jun-23			
05-2980	Onshore vessel power supply system (2.2.12)	135	60	80%	31-May-21 A	29-Jul-23		24-Jun-23	22-Aug-23	24	29-Jul-23, Onshore vessel power supply system			
AIP Incineration Plant Buildings (2.3)														
1699 60 04-Dec-18 A 29-Jul-23 29-Apr-23 23-Aug-24 391														
Foundation design (2.3.01)														
135 0 30-Oct-20 A 31-May-23 09-May-23 09-May-23 -21														
05-3090	Reception Pavilion	135	0	100%	30-Oct-20 A	31-May-23		09-May-23	09-May-23	-21	Reception Pavilion, 31-May-23, 31-May-23, Reception Pavilion			
Structural design (2.3.02)														
135 60 01-Jun-21 A 29-Jul-23 07-Jan-24 06-Mar-24 221														
05-3090-1(M55)	Sky Deck	135	60	55.56%	01-Jun-21 A	29-Jul-23		07-Jan-24	06-Mar-24	221	29-Jul-23, Sky Deck, Sky Deck, 29-Jul-23			
Operation Management System (2.3.03.04)														
121 14 14-Feb-22 A 13-Jun-23 29-Apr-23 04-May-24 326														
05-2250	Design of the Air Quality Monitoring Stations (2.9.01)	60	0	5%	01-Jun-22 A	31-May-23		29-Apr-23	29-Apr-23	-31	Design of the Air Quality Monitoring Stations (2.9.01), 31-May-23, 31-May-23, Design of the Air Quality Monitoring Stations (2.9.01)			
05-3840-1(M22)	Automatic Traffic Control System (ATCS) (2.10.06.12)	90	14	5%	14-Feb-22 A	13-Jun-23		21-Apr-24	04-May-24	326	13-Jun-23, Automatic Traffic Control System (ATCS) (2.10.06.12), Automatic Traffic Control System (ATCS) (2.10.06.12)			
Building services design (excluding fire services installation design) (2.3.06)														
1699 60 04-Dec-18 A 29-Jul-23 24-May-23 23-Aug-24 391														
05-1550	Electrical Services and Lighting	150	0	25%	02-Jan-19 A	05-Apr-23 A		24-May-23	24-May-23		Apr-23 A			
05-1560	MVAC (6 Packages)	105	60	25%	02-Jan-19 A	29-Jul-23		05-Nov-23	03-Jan-24	158	29-Jul-23, MVAC (6 Packages), MVAC (6 Packages)			
05-1570	Odour Control	135	60	25%	04-Dec-18 A	29-Jul-23		05-Nov-23	03-Jan-24	158	29-Jul-23, Odour Control, Odour Control, 29-Jul-23			

3-Month Rolling Programme (May 2023)



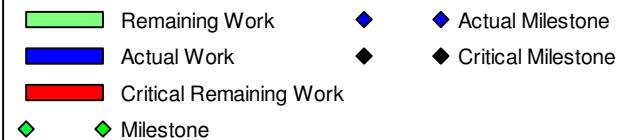
Activity ID	Activity Name	Planned Duration	Remaining Duration	Activity % Complete	Current Start	Current Finish	Late Start	Late Finish	Total Float	M66 Remarks	2023				
											May 66	Jun 67	Jul 68	Aug 69	
05-1580	Plumbing (7 Packages)	210	60	25%	31-Jan-19 A	29-Jul-23	15-Jan-24	14-Mar-24	229						29-Jul-23, Plumbing (7 Packages), Plumbing
05-1590	Drainage (7 Packages)	135	60	25%	31-Jan-19 A	29-Jul-23	15-Jan-24	14-Mar-24	229						29-Jul-23, Drainage (7 Packages), Drainage
05-1600	ELV (7 Packages)	135	0	25%	28-Feb-19 A	05-Apr-23 A	24-May-23	24-May-23							
05-1770	Vehicle & Container Wash System	60	60	0%	31-May-23	29-Jul-23	26-Jul-23	23-Sep-23	56						29-Jul-23, Vehicle & Container Wash System
05-1770-1(M20)	Water Cannon System	135	30	45%	31-Aug-19 A	29-Jun-23	25-Jul-24	23-Aug-24	421						29-Jun-23, Water Cannon System, Water Cannon System, 29-Jun-23
AIP Fire services installation design (2.3.05)		270	2		31-Oct-19 A	01-Jun-23	11-Oct-23	12-Oct-23	133						
Reception Pavilion (2.3.05.06)		270	2		31-Oct-19 A	01-Jun-23	11-Oct-23	12-Oct-23	133						
05-5460(M22)	Fire Systems (2.3.05.06.01)	270	2	80%	31-Oct-19 A	01-Jun-23	11-Oct-23	12-Oct-23	133						01-Jun-23, Fire Systems (2.3.05.06.01), Fire Systems (2.3.05.06.01), 01-Jun-23
05-5470-1(M22)	FS schematics (2.3.05.06.03)	135	2	80%	31-Oct-19 A	01-Jun-23	11-Oct-23	12-Oct-23	133						01-Jun-23, FS schematics (2.3.05.06.03); FS schematics (2.3.05.06.03), 01-Jun-23
AIP Mechanical Treatment Plant Building (2.4)		272	60		11-Jul-18 A	29-Jul-23	31-May-23	16-Sep-26	1145						
05-1670	Electrical and instrumentation works design (2.4.03)	30	30	5%	13-Mar-23 A	29-Jun-23	25-Jun-23	24-Jul-23	25						29-Jun-23, Electrical and instrumentation works design (2.4.03), Electrical and instrument
05-1680	Mechanical works design (2.4.04)	30	30	0%	20-Jan-23 A	29-Jun-23	09-Jul-23	07-Aug-23	39						29-Jun-23, Mechanical works design (2.4.04), Mechanical works design (2.4.04), 29-Jun-23
Building services design (excluding fire services installation design) (2.4.06)		212	60		11-Jul-18 A	29-Jul-23	31-May-23	16-Sep-26	1145						
05-1700	LV and Emergency Power Distribution Design	135	60	5%	18-Jan-22 A	29-Jul-23	14-Feb-24	13-Apr-24	259						29-Jul-23, LV and Emergency Power Distribut
05-1720	Odour Control	90	0	80%	11-Jul-18 A	31-May-23	31-May-23	31-May-23	1						31-May-23, Odour Control, Odour Control, 31-May-23
05-1740	Drainage	90	0	70%	10-Jan-21 A	31-May-23	16-Sep-26	16-Sep-26	1205						31-May-23, Drainage, Drainage, 31-May-23
AIP Wastewater Treatment Plant (2.5)		1170	60		31-Jan-19 A	29-Jul-23	15-Jan-24	14-Mar-24	229						
Building services design (excluding fire services installation design) (2.5.06)		1170	60		31-Jan-19 A	29-Jul-23	15-Jan-24	14-Mar-24	229						
05-1830	LV and Emergency Power Distribution Design (2.5.06.01)	135	60	25%	31-Jan-19 A	29-Jul-23	15-Jan-24	14-Mar-24	229						29-Jul-23, LV and Emergency Power Distribut
05-1850	Odour Control (2.5.06.03)	105	30	80%	31-Dec-21 A	29-Jun-23	06-Feb-24	06-Mar-24	251						29-Jun-23, Odour Control (2.5.06.03), Odour Control (2.5.06.03), 29-Jun-23
AIP Water Treatment Plant Building (2.6)		135	60		30-Apr-19 A	29-Jul-23	14-Apr-24	16-Oct-26	1175						
Building services design (excluding fire services installation design) (2.6.06)		135	60		30-Apr-19 A	29-Jul-23	14-Apr-24	16-Oct-26	1175						
05-1960	Electrical Services and Lighting (2.6.06.01)	135	60	25%	30-Apr-19 A	29-Jul-23	14-Apr-24	12-Jun-24	319						29-Jul-23, Electrical Services and Lighting (2.
05-2000	Drainage	135	10	70%	20-Mar-22 A	09-Jun-23	07-Oct-26	16-Oct-26	1225						09-Jun-23, Drainage, Drainage, 09-Jun-23
AIP Administration Building (2.7)		135	0		31-Oct-19 A	31-May-23	02-Apr-24	02-Apr-24	308						
Building services design (excluding fire services installation design) (2.7.05)		135	0		31-Oct-19 A	31-May-23	02-Apr-24	02-Apr-24	308						
05-2080	MVAC	135	0	65%	31-Oct-19 A	31-May-23	02-Apr-24	02-Apr-24	308						31-May-23, MVAC, MVAC, 31-May-23
AIP Chimney		151	60		20-Sep-21 A	29-Jul-23	09-Sep-23	09-Feb-24	195						
Building services design (excluding fire services installation design)		151	60		20-Sep-21 A	29-Jul-23	09-Sep-23	09-Feb-24	195						
05-5430(5a)	Electrical Services and Lighting	90	60	5%	20-Sep-21 A	29-Jul-23	12-Dec-23	09-Feb-24	195						29-Jul-23, Electrical Services and Lighting, El
05-5440(5a)	MVAC	90	30	5%	20-Sep-21 A	29-Jun-23	09-Sep-23	08-Oct-23	101						29-Jun-23, MVAC, MVAC, 29-Jun-23
05-5450(5a)	Plumbing	90	60	5%	20-Sep-21 A	29-Jul-23	05-Dec-23	02-Feb-24	188						29-Jul-23, Plumbing, Plumbing, 29-Jul-23
05-5460-1(5a)	Drainage	90	60	5%	20-Sep-21 A	29-Jul-23	05-Dec-23	02-Feb-24	188						29-Jul-23, Drainage, Drainage, 29-Jul-23
05-5470(5a)	ELV	90	60	5%	20-Sep-21 A	29-Jul-23	12-Dec-23	09-Feb-24	195						29-Jul-23, ELV, ELV, 29-Jul-23
05-5490(5a)	Building Management System (BMS)	90	0	5%	27-Oct-21 A	31-May-23	16-Oct-23	16-Oct-23	139						31-May-23, Building Management System (BMS), Building Management System (BMS), 31-May-23
AIP Elevated Drive Way and Associated Structures Foundation		105	30		31-Dec-21 A	29-Jun-23	17-Sep-23	16-Oct-23	109						
Building services design (excluding fire services installation design)		105	30		31-Dec-21 A	29-Jun-23	17-Sep-23	16-Oct-23	109						
05-7090	Electrical Services and Lighting	105	30	5%	31-Dec-21 A	29-Jun-23	17-Sep-23	16-Oct-23	109						29-Jun-23, Electrical Services and Lighting, Electrical Services and Lighting, 29-Jun-23
AIP Roads and Utilities (2.10)		1002	60		31-Oct-20 A	29-Jul-23	04-Jul-23	20-Jan-24	175						
Water supply system design on the Artificial Island (2.10.04)		1002	60		31-Oct-20 A	29-Jul-23	04-Jul-23	16-Oct-23	79						
05-2360	Water Tanks (2.10.04.05)	60	60	0%	31-May-23	29-Jul-23	04-Jul-23	01-Sep-23	34						29-Jul-23, Water Tanks (2.10.04.05)
05-2370-2(M24)	Building Services system for seawater intake (2.10.04.09)	105	60	5%	31-Oct-20 A	29-Jul-23	18-Aug-23	16-Oct-23	79						29-Jul-23, Building Services system for seawa
05-2370-3(5a)	Chemical scrubber system for odour control (2.10.04.10)	105	60	5%	31-Oct-21 A	29-Jul-23	18-Aug-23	16-Oct-23	79						29-Jul-23, Chemical scrubber system for odou
Design of telecommunication and other utilities (2.10.06)		590	1		31-Jan-21 A	31-May-23	06-Nov-23	20-Jan-24	234						
05-2380	Power Distribution System concept / schematics (2.10.06.01)	135	1	5%	31-Jan-21 A	31-May-23	20-Jan-24	20-Jan-24	234						31-May-23, Power Distribution System concept / schematics (2.10.06.01), Power Distribution System concept / schematics (2.10.06.0
05-2430	Site ELV Network System - Navigation aids concept / schematics	105	0	80%	31-May-22 A	31-May-23	06-Nov-23	06-Nov-23	160						31-May-23, Site ELV Network System - Navigation aids concept / schematics (2.10.06.06), Site ELV Network System - Navigation aids
Utility ducts/Pipebridges design (2.10.25)		455	60		01-May-21 A	29-Jul-23	06-Aug-23	21-Nov-23	115						
05-2460	Design of Pipe / Utilities Trenches concept (2.10.06.09.01)	105	60	5%	01-May-21 A	29-Jul-23	23-Sep-23	21-Nov-23	115						29-Jul-23, Design of Pipe / Utilities Trenches c
05-2470	Sitewide Utilities Trenches Design (2.10.06.09.02)	105	60	5%	01-May-21 A	29-Jul-23	23-Sep-23	21-Nov-23	115						29-Jul-23, Sitewide Utilities Trenches Design
Layout Plan for Pipe Bridge Network		60	30		31-May-22 A	29-Jun-23	06-Aug-23	04-Sep-23	67						
05-6010	Pipebridge B	60	30	50%	31-May-22 A	29-Jun-23	06-Aug-23	04-Sep-23	67						29-Jun-23, Pipebridge B, Pipebridge B, 29-Jun-23
AIP Architectural, Finishes and Landscaping Works (2.11)		668	60		31-Oct-20 A	29-Jul-23	07-Nov-23	27-Jun-24	334						
External and internal finishes design		439	10		31-Oct-20 A	09-Jun-23	02-Dec-23	10-Jan-24	215						
05-2570	External and internal finishes design for MT Plant Building (2.11.02)	105	10	45%	31-Oct-20 A	09-Jun-23	02-Dec-23	11-Dec-23	185						09-Jun-23, External and internal finishes design for MT Plant Building (2.11.02), External and internal finishes design for
05-2590	External and internal finishes design for the Water Treatment Plan	105	10	65%	30-Sep-21 A	09-Jun-23	02-Dec-23	11-Dec-23	185						09-Jun-23, External and internal finishes design for the Water Treatment Plant Building (2.11.04), External and internal fir
05-2600	External and internal finishes design for the Administration Buildin	105	10	45%	31-Oct-20 A	09-Jun-23	01-Jan-24	10-Jan-24	215						09-Jun-23, External and internal finishes design for the Administration Building (2.11.05), External and internal finishes d
Facade Structural Design		242	60		26-Aug-21 A	29-Jul-23	07-Nov-23	27-Jun-24	334						
05-8040-1(6D)	Reception Pavilion (2.3.14.07.01)	90	60	5%	05-Oct-21 A	29-Jul-23	10-Apr-24	08-Jun-24	315						29-Jul-23, Reception Pavilion (2.3.14.07.01), F
05-8050-1(6D)	Mechanical Treatment Plant & Desalination Plant Building (2.4.14)	90	60	5%	08-Mar-22 A	29-Jul-23	29-Apr-24	27-Jun-24	334						29-Jul-23, Mechanical Treatment Plant & Des
05-8060-1(6D)	Administration Building and Viewing Gallery (2.7.12.01)	90	60	5%	07-Dec-21 A	29-Jul-23	07-Nov-23	05-Jan-24	160						29-Jul-23, Administration Building and Viewing
05-8080-1(6D)	Elevated Driveway and Associated Structures	91	30	5%	26-Aug-21 A	29-Jun-23	08-Mar-24	06-Apr-24	282						29-Jun-23, Elevated Driveway and Associated Structures, Elevated Driveway and Associate
AIP Testing and Commissioning (2.12)		105	60		23-Apr-19 A	29-Jul-23	06-Aug-23	04-Oct-23	67						
05-2650-1(5)	Factory Acceptance Testing plan (2.12.01.02.07) (8 Packages)	105	60	5%	23-Apr-19 A	29-Jul-23	06-Aug-23	04-Oct-23	67						29-Jul-23, Factory Acceptance Testing plan (2.
AIP Miscellaneous Works (2.14)		105	105		31-May-23	12-Sep-23	12-Jul-23	24-Oct-23	42						
05-2710	Existing onshore crane replacement works at Portion 2	105	105	0%	31-May-23	12-Sep-23	12-Jul-23	24-Oct-23	42						31-May-23
AIP Miscellaneous Detailing (2.15)		90	30		25-May-22 A	29-Jun-23	03-Jun-23	31-Aug-23	63						

3-Month Rolling Programme (May 2023)



Activity ID	Activity Name	Planned Duration	Remaining Duration	Activity % Complete	Current Start	Current Finish	Late Start	Late Finish	Total Float	M66 Remarks	2023			
											May 66	Jun 67	Jul 68	Aug 69
05-2740	Gatehouses (2.15.03)	90	30	5%	25-May-22 A	29-Jun-23	02-Aug-23	31-Aug-23	63					
05-2750	Weighbridge office (2.15.04)	90	30	5%	25-May-22 A	29-Jun-23	03-Jun-23	02-Jul-23	3					
AIP Auxiliary Plant Systems (2.16)		90	90		31-May-23	28-Aug-23	09-Jun-23	19-Oct-23	52					
05-2760	Maintenance workshops (2.16.01)	90	90	0%	31-May-23	28-Aug-23	22-Jul-23	19-Oct-23	52					
05-2770	Vehicle Fuel Filling Station (2.16.02)	90	90	0%	31-May-23	28-Aug-23	09-Jun-23	06-Sep-23	9					
AIP O&M Packages		258	0		06-Jun-22 A	31-May-23	23-Mar-24	24-Aug-24	452					
05-8010(6E)	Warehouse (O&M Scope)	185	0	5%	04-Jul-22 A	31-May-23	23-Mar-24	23-Mar-24	298					
05-8030(6E)	Ash & Residues Container (O&M Scope)	160	0	5%	06-Jun-22 A	31-May-23	24-Aug-24	24-Aug-24	452					
05-8040(6E)	Bicar Debaggng Station (O&M Scope)	105	0	5%	17-Nov-22 A	31-May-23	22-Jul-24	22-Jul-24	419					
DDA Design Package Submissions		1826	180		05-Sep-18 A	26-Nov-23	30-Apr-23	15-Nov-26	1085					
DDA Process and Layout Design (2.1)		1078	76		22-Apr-20 A	14-Aug-23	05-May-23	21-Oct-24	434					
MSW treatment process design for incineration (2.1.13)		1078	76		22-Apr-20 A	14-Aug-23	07-Aug-24	21-Oct-24	434					
05-5090	Incineration System (2.1.13.01) (2 Packages)	105	0	5%	22-Apr-20 A	31-May-23	21-Oct-24	21-Oct-24	510					
05-5100	Heat Recovery Boiler (2.1.13.02) (2 Packages)	105	0	5%	23-Apr-20 A	31-May-23	21-Oct-24	21-Oct-24	510					
05-5120	Leachate Collection and Treatment (2.1.13.05) (2 Packages)	256	76	25%	30-Jun-22 A	14-Aug-23	07-Aug-24	21-Oct-24	434					
05-5140	Overall Plan Water Scheme (2.1.13.07)	105	0	5%	29-Jan-21 A	31-May-23	21-Oct-24	21-Oct-24	510					
05-5150	Boiler Feed Water System (2.1.13.03) (2 Packages)	105	0	45%	23-Apr-20 A	31-May-23	21-Oct-24	21-Oct-24	510					
MSW treatment process design for mechanical treatment (2.1.14)		919	69		02-Oct-20 A	07-Aug-23	05-May-23	06-Sep-23	30					
05-3500	Mechanical Treatment Plant (2.1.14)	69	69	0%	31-May-23*	07-Aug-23	30-Jun-23	06-Sep-23	30					
05-3510	Water Treatment Plant and Boiler Water Treatment (Demin Unit) F	105	0	5%	02-Oct-20 A	31-May-23	05-May-23	05-May-23	-25					
Waste heat recovery and Power generation system (2.1.15)		105	60		30-Sep-21 A	29-Jul-23	20-Nov-23	18-Jan-24	173					
05-5240	Compressed Air Plants	105	60	25%	30-Sep-21 A	29-Jul-23	20-Nov-23	18-Jan-24	173					
Flue gas treatment process design for incineration (2.1.16)		105	25		23-Apr-20 A	24-Jun-23	27-Sep-24	21-Oct-24	485					
05-4660	Flue Gas Treatment System (2 Packages)	105	0	80%	23-Apr-20 A	31-May-23	21-Oct-24	21-Oct-24	510					
05-4980	Boiler ash and APC residue handling and solidification (2 Packages)	105	25	80%	30-Sep-20 A	24-Jun-23	27-Sep-24	21-Oct-24	485					
Logistic arrangement design for MSW and Ash and Residues (2.1.17)		105	0		25-Aug-21 A	31-May-23	01-Aug-23	14-Aug-23	76					
05-4390	Weighbridge Systems	105	0	5%	25-Aug-21 A	31-May-23	01-Aug-23	01-Aug-23	63					
05-4410	Mechanical Shredder	105	0	5%	25-Sep-21 A	31-May-23	14-Aug-23	14-Aug-23	76					
DDA Ground Treatment, Reclamation, Seawall, Breakwater, Berth (2.2)		1742	150		20-Jan-19 A	27-Oct-23	23-Aug-23	30-Mar-24	155					
05-3430-2(M37)	Geotechnical Interpretative Report (2.2.02.02)	105	10	65%	31-Dec-20 A	09-Jun-23	21-Mar-24	30-Mar-24	295					
05-3450	Seawall design (2.2.20)	60	20	65%	20-Jan-19 A	19-Jun-23	17-Nov-23	06-Dec-23	270					
05-3470	Berth design (2.2.22)	60	20	65%	30-Jan-19 A	19-Jun-23	08-Mar-24	27-Mar-24	182					
05-3490	Onshore vessel power supply system (2.2.24)	90	90	0%	30-Jul-23	27-Oct-23	23-Aug-23	20-Nov-23	24					
DDA Incineration Plant Buildings (2.3)		1826	180		05-Sep-18 A	26-Nov-23	30-Apr-23	06-Sep-24	285					
Electrical and instrumentation works design (2.3.15)		1645	105		05-Sep-18 A	12-Sep-23	30-Apr-23	12-Jun-24	274					
2.3.15.01		105	62		05-Nov-21 A	31-Jul-23	12-Apr-24	12-Jun-24	317					
05-3360	11kV/380V Power Transformers Design (2.3.15.01)	105	62	80%	05-Nov-21 A	31-Jul-23	12-Apr-24	12-Jun-24	317					
E&I Package 1 (Process Island) (2.3.15.02)		105	0		22-Sep-20 A	31-May-23	24-Dec-23	13-May-24	349					
05-3390-10(M55)	Electrical Works - MCC Panels (2.3.15.02.01)	105	0	80%	22-Sep-20 A	31-May-23	24-Dec-23	24-Dec-23	208					
05-3390-11(M55)	Electrical Works - Process Island Uninterruptable Power Supply (UPS) (2.3.15.02.03)	105	0	80%	27-Nov-20 A	31-May-23	13-May-24	13-May-24	349					
05-7400-1(M55)	Electrical works CEMS and Process Analysers (2.3.15.02.07)	105	0	5%	12-Jul-21 A	31-May-23	17-Apr-24	17-Apr-24	323					
E&I Package 2 (Power Island) (2.3.15.03)		773	30		16-Sep-19 A	29-Jun-23	19-Jun-23	12-Jun-24	349					
05-3390-13(M55)10	Electrical Works Design (2.3.15.03.01 to 04)	105	30	80%	23-Dec-20 A	29-Jun-23	19-Jun-23	18-Jul-23	19					
05-3390-4(M46)	Generator Related Equipment (2.3.15.03.08)	105	0	80%	29-Jun-21 A	31-May-23	12-Jun-24	12-Jun-24	379					
05-3390-7(M55)	Instrumentation works design(2.3.15.03.05 & 2.3.15.03.06)	105	0	80%	10-Feb-21 A	31-May-23	24-Sep-23	24-Sep-23	117					
Control Works Design SCADA & PLC Control System (2.3.15.03.07)		530	0		16-Sep-19 A	31-May-23	18-Jul-23	17-Feb-24	263					
05-3390-1(M46)	Hardware Design (2.3.15.03.07.01)	105	0	65%	16-Sep-19 A	31-May-23	17-Feb-24	17-Feb-24	263					
05-3390-2(M46)	Software Design (2.3.15.03.07.02)	105	0	45%	30-Oct-21 A	31-May-23	18-Jul-23	18-Jul-23	49					
Operation Management System (2.3.15.04)		1645	105		05-Sep-18 A	12-Sep-23	30-Apr-23	17-Feb-24	158					
05-3390-6(M46)	OMS/SCADA/DCS - System Networks Details (2.3.15.04.02)	105	0	65%	30-Oct-21 A	31-May-23	19-Dec-23	19-Dec-23	203					
05-3390-7(M46)	Software Standard Component	105	60	5%	09-Dec-20 A	29-Jul-23	20-Dec-23	17-Feb-24	203					
05-4490	Design of the Air Quality Monitoring Stations (2.9.03)	60	3	95%	16-Mar-23 A	02-Jun-23	30-Apr-23	02-May-23	-31					
05-7400(6E)	Automatic License Plate and Container Recognition System (ALPCRS)	105	0	45%	05-Sep-18 A	31-May-23	18-Nov-23	18-Nov-23	172					
2.3.15.04.03		410	105		15-Dec-21 A	12-Sep-23	05-Nov-23	17-Feb-24	158					
2.3.15.04.03.01		105	0		15-Dec-21 A	31-May-23	19-Dec-23	19-Dec-23	203					
05-3390-8(M46)	OMS/SCADA/DCS - OLM Panel Design for Power Island (2.3.15.04.03.01.02)	105	0	80%	15-Dec-21 A	31-May-23	19-Dec-23	19-Dec-23	203					
2.3.15.04.03.02		105	105		02-Aug-22 A	12-Sep-23	05-Nov-23	17-Feb-24	158					
05-3390-13(M58)	OMS/SCADA/DCS - Panel Design for Power Island and Plant Cor	105	105	80%	02-Aug-22 A	12-Sep-23	05-Nov-23	17-Feb-24	158					
2.3.15.04.03.03		105	0		19-Apr-22 A	31-May-23	17-Feb-24	17-Feb-24	263					
05-3390-14(M55)	OMS/SCADA/DCS - Server Panel Design (2.3.15.04.03.03)	105	0	80%	19-Apr-22 A	31-May-23	17-Feb-24	17-Feb-24	263					
2.3.15.04.06		105	30		06-Oct-21 A	29-Jun-23	19-Dec-23	18-Jan-24	203					
05-3390-9(6D)	Process Related 3rd Party System (2.3.15.04.06.01.01)	105	0	80%	09-Dec-21 A	31-May-23	19-Dec-23	19-Dec-23	203					
05-3420(M58)	3rd Party System for Power Island & Communication Data Tables	105	30	80%	06-Oct-21 A	29-Jun-23	20-Dec-23	18-Jan-24	203					
2.3.15.05		105	0		15-Jul-21 A	31-May-23	12-Oct-23	12-Nov-23	166					
05-3390-17(M55)	Waste Crane Functional Description (2.3.15.05.08)	105	0	80%	15-Jul-21 A	31-May-23	12-Oct-23	12-Oct-23	135					
05-3390-3(M55)	Electrical and Instrumentation Works Design - Compressed Air P	105	0	80%	29-Nov-21 A	31-May-23	02-Nov-23	02-Nov-23	156					

3-Month Rolling Programme (May 2023)



Activity ID	Activity Name	Planned Duration	Remaining Duration	Activity % Complete	Current Start	Current Finish	Late Start	Late Finish	Total Float	M66 Remarks	2023							
											May 66	Jun 67	Jul 68	Aug 69				
05-3390-5(M55)	Electrical and Instrumentation Works - Ash Crane (2.3.15.05.05)	105	0	80%	30-Aug-21 A	31-May-23	12-Nov-23	12-Nov-23	166									
2.3.15.07		105	105		27-Sep-21 A	12-Sep-23	05-Nov-23	17-Feb-24	158									
05-3390-20(M55)	SCADA & PLC Control System - Software Design (2.3.15.07.02)	105	105	5%	27-Sep-21 A	12-Sep-23	05-Nov-23	17-Feb-24	158									
2.3.15.08		105	105		23-May-22 A	12-Sep-23	05-Nov-23	17-Feb-24	158									
05-3390-21(M55)	Operation Management System (2.3.15.08)	105	105	80%	23-May-22 A	12-Sep-23	05-Nov-23	17-Feb-24	158									
Mechanical works design (2.3.16)		1122	180		07-Jan-20 A	26-Nov-23	01-Jun-23	17-Feb-24	83									
Plant and Equipment		1122	180		07-Jan-20 A	26-Nov-23	01-Jun-23	28-Nov-23	2									
05-3390-4(M55)	Electrical and Instrumentation Works - Waste Crane and Grapple	105	0	70%	07-Jan-20 A	31-May-23	12-Oct-23	12-Oct-23	135									
05-3580	Weighbridge Systems	105	62	5%	30-Mar-22 A	31-Jul-23	01-Jun-23	01-Aug-23	1									
05-3600	Mechanical Shredder	0	0	0%	31-May-23	31-May-23	14-Aug-23	14-Aug-23	76									
05-3650	Leachate collection and treatment	180	180	0%	31-May-23*	26-Nov-23	02-Jun-23	28-Nov-23	2									
05-3830	Compressed Air Plants	105	0	5%	31-Oct-20 A	31-May-23	02-Nov-23	02-Nov-23	156									
Process Pipeworks (Incl. Ductworks) and Valves		197	0		28-Feb-21 A	31-May-23	27-Jul-23	20-Nov-23	174									
05-4350	Pipe Rack C1, C2, C3, D1 & D2 (Prefab.3)	105	0	5%	28-Feb-21 A	31-May-23	28-Jul-23	28-Jul-23	59									
05-4360	Compressed Air Plant area	105	0	45%	31-May-21 A	31-May-23	07-Oct-23	07-Oct-23	130									
05-4370	Pipebridge B (Between CCCW Area & Turbine Hall)	105	0	5%	28-Feb-21 A	31-May-23	27-Jul-23	27-Jul-23	58									
05-4380	Pipebridge C (Between Turbine Hall & ACC Equipment Yard)	105	0	5%	28-Feb-21 A	31-May-23	28-Jul-23	28-Jul-23	59									
05-4950	Turbine Hall	105	0	80%	31-May-21 A	31-May-23	24-Sep-23	24-Sep-23	117									
05-4960	ACC Equipment Yard	105	0	65%	31-May-21 A	31-May-23	20-Nov-23	20-Nov-23	174									
05-4970	CCCW Area	105	0	65%	31-May-21 A	31-May-23	28-Jul-23	28-Jul-23	59									
Process steel structure support (For equipment, piping & duct, cable tray etc)		105	0		29-May-21 A	31-May-23	21-Aug-23	03-Oct-23	126									
05-3540	Pipe Rack C1, C2, C3, D1 & D2 (Prefab.3)	105	0	80%	29-May-21 A	31-May-23	21-Aug-23	21-Aug-23	83									
05-3560	Pipebridge B (Between CCCW Area & Turbine Hall)	105	0	5%	29-May-21 A	31-May-23	26-Sep-23	26-Sep-23	119									
05-3570	Pipebridge C (Between Turbine Hall & ACC Equipment Yard)	105	0	5%	10-Jun-21 A	31-May-23	03-Oct-23	03-Oct-23	126									
Equipment and piping insulation		135	90		31-Dec-21 A	28-Aug-23	20-Dec-23	17-Feb-24	173									
05-4550	Steam Turbine Generator (STG) and Pressure Reducing and Desu	105	0	5%	30-Jan-22 A	31-May-23	01-Feb-24	01-Feb-24	247									
05-4560	Air cooled condenser	105	0	5%	31-Dec-21 A	31-May-23	07-Feb-24	07-Feb-24	253									
05-4570	Closed Circuit Cooling Water System	105	60	5%	31-Dec-21 A	28-Aug-23	20-Dec-23	17-Feb-24	173									
DDA Fire services installation design (2.3.17)		60	30		22-Sep-22 A	29-Jun-23	15-Jul-23	13-Aug-23	45									
05-3660	Fire Systems (same package with 05-3680)	60	30	5%	22-Sep-22 A	29-Jun-23	15-Jul-23	13-Aug-23	45									
05-3680	FS schematics (same package with 05-3660)	60	30	5%	22-Sep-22 A	29-Jun-23	15-Jul-23	13-Aug-23	45									
Building services design (excluding fire services installation design) (2.3.18)		90	90		31-May-23	28-Aug-23	24-May-23	12-Sep-23	15									
05-3690	Electrical Services and Lighting (7 Packages)	60	60	0%	31-May-23	29-Jul-23	24-May-23	22-Jul-23	-7									
05-3740	ELV (7 Packages)	60	60	0%	31-May-23	29-Jul-23	24-May-23	22-Jul-23	-7									
05-3750	Lifts and Escalators	90	90	0%	31-May-23	28-Aug-23	15-Jun-23	12-Sep-23	15									
General Layout Drawings and Fire Safety Strategy (2.3.25)		667	60		31-Jul-21 A	29-Jul-23	30-May-23	06-Sep-24	405									
05-3300	ACC Equipment Structure	60	30	50%	15-Dec-22 A	29-Jul-23	08-Aug-24	06-Sep-24	405									
05-3310	Turbine Hall Building	105	0	25%	29-Dec-21 A	31-May-23	08-Jun-24	08-Jun-24	375									
05-4290	IWMF Substation (2.8.25)	105	0	65%	31-Jul-21 A	05-Apr-23 A	30-May-23	30-May-23										
DDA Mechanical Treatment Plant Building (2.4)		180	150		20-Sep-22 A	27-Oct-23	01-Jun-23	15-Nov-26	1115									
05-5180	Structural design (2.4.14)	60	30	5%	23-Feb-23 A	29-Jun-23	15-Jun-23	14-Jul-23	15									
05-5190	Electrical and instrumentation works design	74	74	0%	30-Jun-23	11-Sep-23	25-Jul-23	06-Oct-23	25									
05-5200	Mechanical works design (2.4.16)	60	60	0%	09-Jul-23	06-Sep-23	08-Aug-23	06-Oct-23	30									
05-5210	Fire services installation design (2.6.17)	60	60	5%	21-Apr-23 A	29-Jul-23	15-Jul-23	12-Sep-23	45									
Building services design (excluding fire services installation design) (2.4.18)		150	150		20-Sep-22 A	27-Oct-23	01-Jun-23	15-Nov-26	1115									
05-3850	LV and Emergency Power Distribution Design	90	90	5%	20-Sep-22 A	27-Oct-23	14-Apr-24	12-Jul-24	259									
05-3860	MVAC	90	90	5%	14-Feb-23 A	28-Aug-23	09-Sep-23	07-Dec-23	101									
05-3870	Odour Control	90	44	5%	16-Apr-23 A	13-Jul-23	01-Jun-23	14-Jul-23	1									
05-3880	Plumbing	60	30	5%	20-Sep-22 A	29-Jun-23	10-Aug-23	08-Sep-23	71									
05-3890	Drainage	60	60	5%	24-Apr-23 A	29-Jul-23	17-Sep-26	15-Nov-26	1205									
05-3900	Lighting and small power	90	90	5%	20-Sep-22 A	28-Aug-23	17-Oct-23	14-Jan-24	139									
05-3910	Lifts and Escalators	90	90	0%	31-May-23	28-Aug-23	15-Jun-23	12-Sep-23	15									
05-3910-1	Building Management System (BMS)	60	60	5%	20-Sep-22 A	29-Jul-23	17-Oct-23	15-Dec-23	139									
DDA Wastewater Treatment Plant (2.5)		499	150		10-Mar-22 A	27-Oct-23	27-Jun-23	09-Nov-24	379									
05-3950	Electrical and instrumentation works design (2.5.15)	60	30	5%	19-Sep-22 A	29-Jun-23	27-Jun-23	26-Jul-23	27									
05-3960	Mechanical works design (2.5.16) (5 Packages)	232	0	5%	31-May-22 A	31-May-23	26-Jul-23	26-Jul-23	57									
05-3970	Fire services installation design (2.6.17) (2 Packages)	60	30	5%	21-Apr-23 A	29-Jun-23	08-Aug-24	06-Sep-24	435									
Building services design (excluding fire services installation design) (2.5.18)		155	150		10-Mar-22 A	27-Oct-23	15-Mar-24	09-Nov-24	379									
05-3980	LV and Emergency Power Distribution Design for IWMF Waste W	90	90	5%	20-Sep-22 A	27-Oct-23	15-Mar-24	12-Jun-24	229									
05-3990	MVAC	90	30	5%	09-Mar-23 A	29-Jun-23	06-May-24	04-Jun-24	341									
05-4010	Plumbing	90	30	5%	20-Sep-22 A	29-Jun-23	12-Aug-24	10-Sep-24	439									
05-4020	Drainage	105	30	80%	10-Mar-22 A	29-Jun-23	12-Aug-24	10-Sep-24	439									
05-4030	ELV	90	30	80%	22-Sep-22 A	29-Jun-23	11-Oct-24	09-Nov-24	499									
DDA Water Treatment Plant Building (2.6)		513	90		25-Nov-21 A	28-Aug-23	07-Jun-23	15-Nov-26	1175									
05-4070	Structural design (2.6.14)	60	30	5%	25-Nov-21 A	29-Jun-23	22-Jul-23	20-Aug-23	52									
05-4090	Mechanical works design (2.6.16)	90	30	5%	02-May-22 A	29-Jun-23	07-Jun-23	06-Jul-23	7									

3-Month Rolling Programme (May 2023)

- Remaining Work
- Actual Work
- Critical Remaining Work
- Milestone
- Actual Milestone
- Critical Milestone

Activity ID	Activity Name	Planned Duration	Remaining Duration	Activity % Complete	Current Start	Current Finish	Late Start	Late Finish	Total Float	M66 Remarks	2023			
											May 66	Jun 67	Jul 68	Aug 69
DDA Architectural, Finishes and Landscaping Works (2.11)														
External and internal finishes design														
05-4670	External and internal finishes design for Incineration Plant Building	90	30	5%	15-Jun-22 A	08-Aug-23	08-Jun-23	08-Jul-24	375					
05-4690	External and internal finishes design for Turbine Hall Building	90	9	45%	10-Aug-22 A	08-Jun-23	25-Jan-24	02-Feb-24	239					
05-4700	External and internal finishes design for CCCW Building	90	0	45%	10-Aug-22 A	31-May-23	09-May-24	09-May-24	345					
05-4710	External and internal finishes design for Chimney	90	62	45%	02-Sep-22 A	31-Jul-23	13-Nov-23	13-Jan-24	166					
05-4720	External and internal finishes design for Reception Pavilion	90	60	45%	23-May-22 A	29-Jul-23	08-Jun-23	06-Aug-23	8					
05-4760	External and internal finishes design for the Administration Building	90	60	5%	11-Jul-22 A	08-Aug-23	11-Jan-24	10-Mar-24	215					
05-4770	External and internal finishes design for the IWMF Substation (2.11.20)	90	5	45%	10-Aug-22 A	04-Jun-23	28-Jun-23	02-Jul-23	28					
05-5420	External and internal finishes design for Elevated Driveway	90	60	45%	15-Jun-21 A	29-Jul-23	13-Sep-23	11-Nov-23	105					
Facade Structural Design														
05-8000(M45)	Chimney (2.3.14.05.01)	90	90	0%	31-May-23	28-Aug-23	08-Jul-23	05-Oct-23	38					
05-8010(M45)	IWMF Substation	90	0	0%	11-Jul-22 A	31-May-23	31-May-23	31-May-23	1					
05-8020(6D)	Process Building & Wastewater Treatment Plant (2.6.14.01)	90	60	80%	07-Apr-22 A	29-Jul-23	14-Jul-23	11-Sep-23	44					
DDA Testing and Commissioning (2.12)														
05-4810-1(5a)	Factory Acceptance Testing plan (2.12.09.02-07) (8 Packages)	90	30	5%	13-Jun-22 A	28-Aug-23	19-Dec-23	17-Jan-24	142					
05-4810-2(M55)	FAT of DCS - Software SIL/FAT Plant for Process Island (2.12.09.03.01)	105	10	100%	19-May-22 A	09-Jun-23	10-Dec-23	19-Dec-23	193					
DDA Transportation Facilities for the Operation (2.13)														
05-4850	Design of vehicles for MSW and Ash and Residues delivery (2.13.05)	341	1	0%	25-Jun-22 A	31-May-23	28-Jun-23	28-Jun-23	28					
05-4860	Design of marine vessels for the use of the Employer and visitors (2.13.06)	1	1	0%	31-May-23	31-May-23	28-Jun-23	28-Jun-23	28					
DDA Miscellaneous Detailing (2.15)														
05-4910	Weighbridge office (2.15.08)	62	62	0%	31-May-23	31-Jul-23	01-Jun-23	01-Aug-23	1					
DDA Auxiliary Plant Systems (2.16)														
05-4940-2(5a)	Hoisting systems (2.16.10)	90	90	0%	31-May-23	28-Aug-23	11-Jul-23	08-Oct-23	41					
05-4940-3(6E)	EOTC System (2.16.11)	90	0	5%	26-Apr-22 A	15-Mar-23 A	15-Jul-23	15-Jul-23						
Procurement of Major Equipment														
Off-site Fabrication of Incineration Modules														
Fabrication of Module (TPU)														
PFab 1- Line 1														
E&I Installation (On-site Installation)														
Electrical														
06-TPU-1-1280	PFab 1-Line 1 - Electrical Cable Pulling and Termination	180	180	0%	18-Jul-23	13-Jan-24	24-Jul-23	19-Jan-24	6					
06-TPU-1-1290	PFab 1-Line 1 - Electrical Equipment Installation	180	180	0%	15-Jul-23*	10-Jan-24	15-Jul-23	10-Jan-24	0					
Instrument														
06-TPU-1-1310	PFab 1-Line 1 - Instrument Cable Pulling and Termination	180	180	0%	24-Jul-23	19-Jan-24	24-Jul-23	19-Jan-24	0					
06-TPU-1-1320	PFab 1-Line 1 - Instrument Equipment Installation	180	101	43.89%	25-Nov-22 A	30-Oct-23	22-Jul-23	30-Oct-23	0					
06-TPU-1-1330	PFab 1-Line 1 - Instrument Tubing Installation	180	180	0%	22-Jul-23	17-Jan-24	22-Jul-23	17-Jan-24	0					
Insulation														
06-TPU-1-1020	PFab 1-Line 1 - Insulation	150	233	0%	23-May-22 A	18-Jan-24	31-May-23	18-Jan-24	0					
PFab 1- Line 2														
E&I Installation (On-site Installation)														
Electrical														
06-TPU-2-1270	PFab 1-Line 2 - Electrical Cable Pulling and Termination	180	180	0%	23-Jul-23	18-Jan-24	23-Jul-23	18-Jan-24	0					
06-TPU-2-1280	PFab 1-Line 2 - Electrical Equipment Installation	180	180	0%	15-Jul-23*	10-Jan-24	15-Jul-23	10-Jan-24	0					
Instrument														
06-TPU-2-1300	PFab 1-Line 2 - Instrument Cable Pulling and Termination	180	180	0%	23-Jul-23	18-Jan-24*	23-Jul-23	18-Jan-24	0					
06-TPU-2-1310	PFab 1-Line 2 - Instrument Equipment Installation	180	180	0%	15-Jul-23	10-Jan-24	15-Jul-23	10-Jan-24	0					
06-TPU-2-1320	PFab 1-Line 2 - Instrument Tubing Installation	180	180	0%	15-Jul-23	10-Jan-24	15-Jul-23	10-Jan-24	0					
Insulation														
06-TPU-2-1010	PFab 1-Line 2 - Insulation	150	232	0%	22-May-22 A	17-Jan-24	31-May-23	17-Jan-24	0					
PFab 1- Line 3														
E&I Installation														
Electrical														
06-TPU-3-1270	PFab 1-Line 3 - Electrical Cable Pulling and Termination	180	180	0%	28-Aug-23	23-Feb-24*	28-Aug-23	23-Feb-24	0					
06-TPU-3-1280	PFab 1-Line 3 - Electrical Equipment Installation	180	180	0%	07-Aug-23	02-Feb-24	07-Aug-23	02-Feb-24	0					
Instrument														
06-TPU-3-1300	PFab 1-Line 3 - Instrument Cable Pulling and Termination	180	180	0%	28-Aug-23	23-Feb-24*	28-Aug-23	23-Feb-24	0					
06-TPU-3-1310	PFab 1-Line 3 - Instrument Equipment Installation	180	180	0%	07-Aug-23	02-Feb-24	07-Aug-23	02-Feb-24	0					
06-TPU-3-1320	PFab 1-Line 3 - Instrument Tubing Installation	180	180	0%	07-Aug-23	02-Feb-24	07-Aug-23	02-Feb-24	0					
Insulation														
06-TPU-3-1010	PFab 1-Line 3 - Insulation	150	304	0%	23-May-22 A	29-Mar-24	31-May-23	29-Mar-24	0					
Load out & Shipping														
06-TPU-3-1030	PFab 1-Line 3 - Load out & ready to ship	10	10	0%	18-Jun-23*	27-Jun-23	12-Feb-23	21-Feb-23	-126					
Delivery														
06-TPU-3-1340	PFab 1-Line 3 - Delivery	10	10	0%	28-Jun-23	07-Jul-23	22-Feb-23	03-Mar-23	-126					
PFab 1- Line 4														

3-Month Rolling Programme (May 2023)

■ Remaining Work ◆ Actual Milestone
■ Actual Work ◆ Critical Milestone
■ Critical Remaining Work
◆ Milestone

Activity ID	Activity Name	Planned Duration	Remaining Duration	Activity % Complete	Current Start	Current Finish	Late Start	Late Finish	Total Float	M66 Remarks	2023			
											May 66	Jun 67	Jul 68	Aug 69
Mechanical Erection														
06-TPU-4-1040	PFab 1-Line 4 - Mechanical Installation - 1st Floor (Below EL20.4'	149	20		09-Jan-22 A	19-Jun-23	21-Mar-23	09-Apr-23	-71					
06-TPU-4-1050	PFab 1-Line 4 - Mechanical Installation - 2nd Floor(EL20.47m~EL	80	20	75%	09-Jan-22 A	19-Jun-23	21-Mar-23	09-Apr-23	-71					
06-TPU-4-1060	PFab 1-Line 4 - Mechanical Installation - 3rd Floor(EL26.72m~EL	80	20	75%	06-May-22 A	19-Jun-23	21-Mar-23	09-Apr-23	-71					
E&I Installation														
Electrical														
06-TPU-4-1280	PFab 1-Line 4 - Electrical Equipment Installation	299	268		06-Apr-23 A	22-Feb-24	21-Mar-23	22-Feb-24	0					
06-TPU-4-1290	PFab 1-Line 4 - Electrical Heat Tracing Installation (Installation by	299	268		27-Aug-23	22-Feb-24	27-Aug-23	22-Feb-24	0				27-Aug-23	
06-TPU-4-1330	PFab 1-Line 4 - MCC room installation (Installation by Yard)	26	14	46.15%	06-Apr-23 A	13-Jun-23	21-Mar-23	03-Apr-23	-71					
Instrument														
06-TPU-4-1310	PFab 1-Line 4 - Instrument Equipment Installation	25	14	44%	07-Apr-23 A	13-Jun-23	21-Mar-23	03-Apr-23	-71					
06-TPU-4-1320	PFab 1-Line 4 - Instrument Tubing Installation	180	180		27-Aug-23	22-Feb-24	27-Aug-23	22-Feb-24	0				27-Aug-23	
Insulation														
06-TPU-4-1010	PFab 1-Line 4 - Insulation	150	304		25-May-22 A	29-Mar-24	31-May-23	29-Mar-24	0					
Load out & Shipping														
06-TPU-4-1030	PFab 1-Line 4 - Load Out & ready to ship	10	10		08-Jul-23*	17-Jul-23	07-Mar-23	16-Mar-23	-123				08-Jul-23*	
Delivery														
06-TPU-4-1340	PFab 1-Line 4 - Delivery	10	10		18-Jul-23	27-Jul-23	17-Mar-23	26-Mar-23	-123				18-Jul-23	
PFab 1-Line 5														
Structure Erection														
06-TPU-5-1120	PFab 1-Line 5 - 3rd Floor(EL26.72m~EL37.72m)Primary & Seco	790	369		23-Mar-21 A	02-Jun-24	10-Mar-23	02-Jun-24	0					
06-TPU-5-1130	PFab 1-Line 5 - 4th Floor(EL37.72m~EL47.22m) Primary & Seco	169	46		02-Dec-22 A	15-Jul-23	10-Mar-23	24-Apr-23	-82					
06-TPU-5-1140	PFab 1-Line 5 - Top Floor(EL47.22m~EL54.47m) Prim ary & Seco	60	8	86.67%	02-Dec-22 A	07-Jun-23	10-Mar-23	17-Mar-23	-82					
Mechanical Erection														
06-TPU-5-1040	PFab 1-Line 5 - Mechanical Installation - 1st Floor (Below EL20.4'	60	11	81.67%	16-Dec-22 A	27-Jun-23	27-Mar-23	06-Apr-23	-82					
06-TPU-5-1050	PFab 1-Line 5 - Mechanical Installation - 2nd Floor(EL20.47m~EL	30	18	40%	30-Dec-22 A	15-Jul-23	07-Apr-23	24-Apr-23	-82					
06-TPU-5-1060	PFab 1-Line 5 - Mechanical Installation - 3rd Floor(EL26.72m~EL	514	59		02-Mar-22 A	29-Jul-23	10-Mar-23	07-May-23	-82					
06-TPU-5-1070	PFab 1-Line 5 - Mechanical Installation - 4th Floor(EL37.72m~EL	80	29	63.75%	02-Mar-22 A	28-Jun-23	10-Mar-23	07-Apr-23	-82					
06-TPU-5-1240	PFab 1-Line 5 - Mechanical Installation - Boiler Lifting & Installation	80	29	63.75%	24-Feb-23 A	28-Jun-23	10-Mar-23	07-Apr-23	-82					
Piping Fabrication														
06-TPU-5-1220	PFab 1-Line 5 - Piping Fabrication	80	0	100%	03-Mar-23 A	29-Jul-23	07-May-23	07-May-23	-82					
Piping Installation														
06-TPU-5-1000	PFab 1-Line 5 - Piping Installation	80	42	47.5%	03-Mar-23 A	28-Jul-23	27-Mar-23	07-May-23	-82					
E&I Installation														
06-TPU-5-1250	PFab 1-Line 5 - E&I Support Installation	180	5	97.22%	23-Mar-21 A	04-Jun-23	10-Mar-23	14-Mar-23	-82					
06-TPU-5-1260	PFab 1-Line 5 - E&I Cable Ladder Erection	62	34	45.16%	03-May-23 A	03-Aug-23	10-Apr-23	13-May-23	-82					
Electrical														
06-TPU-5-1290	PFab 1-Line 5 - Electrical Heat Tracing Installation (Installation by	52	37		13-May-23 A	06-Jul-23	10-Mar-23	15-Apr-23	-82					
06-TPU-5-1330	PFab 1-Line 5 - MCC room installation (Installation by Yard)	45	37	17.78%	13-May-23 A	06-Jul-23	10-Mar-23	15-Apr-23	-82					
Insulation														
06-TPU-5-1010	PFab 1-Line 5 - Insulation	26	26		11-Jun-23	06-Jul-23	21-Mar-23	15-Apr-23	-82					
06-TPU-5-1030	PFab 1-Line 5 - Load Out & ready to ship	26	26		11-Jun-23*	06-Jul-23	21-Mar-23	15-Apr-23	-82				11-Jun-23*	
06-TPU-5-1340	PFab 1-Line 5 - Delivery	25	25		12-Jun-23*	06-Jul-23	22-Mar-23	15-Apr-23	-82				12-Jun-23*	
Load out & Shipping														
06-TPU-5-1030	PFab 1-Line 5 - Load Out & ready to ship	150	369		04-Jun-22 A	02-Jun-24	31-May-23	02-Jun-24	0					
Delivery														
06-TPU-5-1340	PFab 1-Line 5 - Delivery	20	20		19-Aug-23	07-Sep-23	16-Apr-23	05-May-23	-125				19-Aug-23*	
PFab 1-Line 6														
Structure Erection														
06-TPU-6-1110	PFab 1-Line 6 - 2nd Floor(EL20.47m~EL26.72m) Primary & Seco	560	342		03-Mar-22 A	06-May-24	26-Mar-23	06-May-24	0					
06-TPU-6-1120	PFab 1-Line 6 - 3rd Floor(EL26.72m~EL37.72m)Primary & Seco	412	47		08-Apr-22 A	16-Jul-23	23-Apr-23	08-Jun-23	-38					
06-TPU-6-1130	PFab 1-Line 6 - 4th Floor(EL37.72m~EL47.22m) Primary & Seco	60	3	95%	08-Apr-22 A	02-Jun-23	23-Apr-23	25-Apr-23	-38					
06-TPU-6-1140	PFab 1-Line 6 - Top Floor(EL47.22m~EL54.47m) Prim ary & Seco	45	8	82.22%	24-Jun-22 A	10-Jun-23	26-Apr-23	03-May-23	-38					
Mechanical Erection														
06-TPU-6-1160	PFab 1-Line 6 - Mechanical Installation - 1st Floor (Below EL20.4'	30	15	50%	02-Sep-22 A	14-Jun-23	23-Apr-23	07-May-23	-38					
06-TPU-6-1170	PFab 1-Line 6 - Mechanical Installation - 2nd Floor(EL20.47m~EL	30	30		08-Nov-22 A	16-Jul-23	10-May-23	08-Jun-23	-38					
06-TPU-6-1180	PFab 1-Line 6 - Mechanical Installation - 3rd Floor(EL26.72m~EL	491	23		03-Mar-22 A	22-Jun-23	28-Mar-23	19-Apr-23	-64					
06-TPU-6-1190	PFab 1-Line 6 - Mechanical Installation - 4th Floor(EL37.72m~EL	80	23	71.25%	03-Mar-22 A	22-Jun-23	28-Mar-23	19-Apr-23	-64					
E&I Installation														
06-TPU-6-1250	PFab 1-Line 6 - E&I Support Installation	80	23	71.25%	20-May-22 A	22-Jun-23	28-Mar-23	19-Apr-23	-64					
06-TPU-6-1260	PFab 1-Line 6 - E&I Cable Ladder Erection	80	23	71.25%	19-Aug-22 A	22-Jun-23	28-Mar-23	19-Apr-23	-64					
Electrical														
06-TPU-6-1290	PFab 1-Line 6 - Electrical Heat Tracing Installation (Installation by	57	44		20-Apr-23 A	13-Jul-23	26-Mar-23	08-May-23	-66					
06-TPU-6-1330	PFab 1-Line 6 - MCC room installation (Installation by Yard)	45	44	2.22%	20-Apr-23 A	13-Jul-23	26-Mar-23	08-May-23	-66					
Insulation														
06-TPU-6-1010	PFab 1-Line 6 - Insulation	26	26		31-May-23	25-Jun-23	13-Apr-23	08-May-23	-48					
06-TPU-6-1030	PFab 1-Line 6 - Load Out & ready to ship	26	26		31-May-23*	25-Jun-23	13-Apr-23	08-May-23	-48					
Delivery														
06-TPU-6-1030	PFab 1-Line 6 - Delivery	150	342		08-Jul-22 A	06-May-24	31-May-23	06-May-24	0					
Load out & Shipping														
06-TPU-6-1030	PFab 1-Line 6 - Load Out & ready to ship	20	20		12-Aug-23	31-Aug-23	09-May-23	28-May-23	-95					

3-Month Rolling Programme (May 2023)

Remaining Work
 Actual Work
 Critical Remaining Work
 Milestone
 Actual Milestone
 Critical Milestone

Activity ID	Activity Name	Planned Duration	Remaining Duration	Activity % Complete	Current Start	Current Finish	Late Start	Late Finish	Total Float	M66 Remarks	2023			
											May 66	Jun 67	Jul 68	Aug 69
Delivery		10	10		01-Sep-23	10-Sep-23	29-May-23	07-Jun-23	-95					
06-TPU-6-1340	PFab 1-Line 6 - Delivery	10	10	0%	01-Sep-23	10-Sep-23	29-May-23	07-Jun-23	-95					01-Sep-23
Fabrication of Module (FGC)		880	309		18-Jun-21 A	03-Apr-24	14-Feb-23	03-Apr-24	0					
PFab 2 - Line 1		452	203		25-May-22 A	19-Dec-23	31-May-23	19-Dec-23	0					
E&I Installation		134	134		15-Jul-23	25-Nov-23	15-Jul-23	25-Nov-23	0					
Electrical		134	134		15-Jul-23	25-Nov-23	15-Jul-23	25-Nov-23	0					
06-FGC-1-1250	PFab 2-Line 1 - Electrical Cable Pulling and Termination	120	120	0%	29-Jul-23	25-Nov-23*	29-Jul-23	25-Nov-23	0					29-Jul-23
06-FGC-1-1260	PFab 2-Line 1 - Electrical Equipment Installation	120	120	0%	15-Jul-23*	11-Nov-23	15-Jul-23	11-Nov-23	0					15-Jul-23*
Instrument		134	134		15-Jul-23	25-Nov-23	15-Jul-23	25-Nov-23	0					
06-FGC-1-1280	PFab 2-Line 1 - Instrument Cable Pulling and Termination	120	120	0%	29-Jul-23	25-Nov-23*	29-Jul-23	25-Nov-23	0					29-Jul-23
06-FGC-1-1290	PFab 2-Line 1 - Instrument Equipment Installation	120	120	0%	15-Jul-23	11-Nov-23	15-Jul-23	11-Nov-23	0					15-Jul-23
06-FGC-1-1300	PFab 2-Line 1 - Instrument Tubing Installation	120	120	0%	15-Jul-23	11-Nov-23	15-Jul-23	11-Nov-23	0					15-Jul-23
Insulation		150	203		25-May-22 A	19-Dec-23	31-May-23	19-Dec-23	0					
06-FGC-1-1130	PFab 2-Line 1 - Insulation	150	203	0%	25-May-22 A	19-Dec-23	31-May-23	19-Dec-23	0					
PFab 2 - Line 2		241	203		10-Feb-23 A	19-Dec-23	30-May-23	19-Dec-23	0					
E&I Installation		134	134		15-Jul-23	26-Nov-23	14-Jul-23	25-Nov-23	-1					
Electrical		134	134		15-Jul-23	26-Nov-23	14-Jul-23	25-Nov-23	-1					
06-FGC-2-1250	PFab 2-Line 2 - Electrical Cable Pulling and Termination	120	120	0%	29-Jul-23	26-Nov-23*	28-Jul-23	25-Nov-23	-1					29-Jul-23
06-FGC-2-1260	PFab 2-Line 2 - Electrical Equipment Installation	120	120	0%	15-Jul-23*	12-Nov-23	14-Jul-23	11-Nov-23	-1					15-Jul-23*
Instrument		134	134		15-Jul-23	26-Nov-23	14-Jul-23	25-Nov-23	-1					
06-FGC-2-1280	PFab 2-Line 2 - Instrument Cable Pulling and Termination	120	120	0%	29-Jul-23	26-Nov-23*	28-Jul-23	25-Nov-23	-1					29-Jul-23
06-FGC-2-1290	PFab 2-Line 2 - Instrument Equipment Installation	120	120	0%	15-Jul-23	12-Nov-23	14-Jul-23	11-Nov-23	-1					15-Jul-23
06-FGC-2-1300	PFab 2-Line 2 - Instrument Tubing Installation	120	120	0%	15-Jul-23	12-Nov-23	14-Jul-23	11-Nov-23	-1					15-Jul-23
Insulation		203	203		10-Feb-23 A	19-Dec-23	30-May-23	19-Dec-23	0					
06-FGC-2-1010	PFab 2-Line 2 - Insulation	203	203	0%	10-Feb-23 A	19-Dec-23*	30-May-23	19-Dec-23	0					
PFab 2 - Line 3		568	83		02-Jan-22 A	21-Aug-23	14-Mar-23	18-Apr-23	-125					
Mechanical Erection		303	31		02-Jan-22 A	30-Jun-23	14-Mar-23	13-Apr-23	-78					
06-FGC-3-1000	PFab 2-Line 3 - 1st Floor (Below EL12.47m) (Including Silencer ID fan)	60	31	48.33%	02-Jan-22 A	30-Jun-23	14-Mar-23	13-Apr-23	-78					PFab 2-Line 3 - 1st Floor (Below EL12.47m) (Including Silencer ID fan), 30-Jun-23, 30-Jun-23
06-FGC-3-1010	PFab 2-Line 3 - 2nd Floor (EL12.47~ EL23.47m) (Including Dosing system bicar)	60	30	50%	10-Mar-22 A	30-Jun-23	14-Mar-23	12-Apr-23	-78					PFab 2-Line 3 - 2nd Floor (EL12.47~ EL23.47m) (Including Dosing system bicar), 30-Jun-23
06-FGC-3-1020	PFab 2-Line 3 - 3rd Floor (EL23.47~ EL34.47m) (Including Ash and residue to solidification)	60	0	100%	01-Sep-22 A	30-Jun-23	12-Apr-23	12-Apr-23	-78					PFab 2-Line 3 - 3rd Floor (EL23.47~ EL34.47m) (Including Ash and residue to solidification), 30-Jun-23
06-FGC-3-1030	PFab 2-Line 3 - 4th Floor (EL34.47~ EL44.22m) (Including Urea to ammonia convertor)	50	30	40%	10-Sep-22 A	30-Jun-23	14-Mar-23	12-Apr-23	-78					PFab 2-Line 3 - 4th Floor (EL34.47~ EL44.22m) (Including Urea to ammonia convertor), 30-Jun-23
E&I Installation		26	15		28-Apr-23 A	14-Jun-23	14-Mar-23	28-Mar-23	-78					
Electrical		26	15		28-Apr-23 A	14-Jun-23	14-Mar-23	28-Mar-23	-78					
06-FGC-3-1270	PFab 2-Line 3 - Electrical Heat Tracing Installation (Installation by Yard)	26	15	42.31%	08-May-23 A	14-Jun-23	14-Mar-23	28-Mar-23	-78					23-Jul-23*
06-FGC-3-1310	PFab 2-Line 3 - MCC room installation (Installation by Yard)	25	15	40%	28-Apr-23 A	14-Jun-23	14-Mar-23	28-Mar-23	-78					PFab 2-Line 3 - MCC room installation (Installation by Yard), 14-Jun-23, 14-Jun-23, PFab 2-Line 3 - MCC room in
Load out & Shipping		20	20		23-Jul-23	11-Aug-23	20-Mar-23	08-Apr-23	-125					
06-FGC-3-1200	PFab 2-Line 3 - Load Out & ready to ship	20	20	0%	23-Jul-23*	11-Aug-23	20-Mar-23	08-Apr-23	-125					23-Jul-23*
Delivery		10	10		12-Aug-23	21-Aug-23	09-Apr-23	18-Apr-23	-125					
06-FGC-3-1320	PFab 2-Line 3 - Delivery	10	10	0%	12-Aug-23	21-Aug-23	09-Apr-23	18-Apr-23	-125					12-Aug-23
PFab 2 - Line 4		568	83		24-Dec-21 A	21-Aug-23	14-Feb-23	18-Apr-23	-125					21-Aug-23
Mechanical Erection		263	34		24-Dec-21 A	03-Jul-23	14-Feb-23	19-Mar-23	-106					
06-FGC-4-1040	PFab 2-Line 4 - 1st Floor (Below EL12.47m) (Including Silencer ID fan)	60	34	43.33%	24-Dec-21 A	03-Jul-23	14-Feb-23	19-Mar-23	-106					PFab 2-Line 4 - 1st Floor (Below EL12.47m) (Including Silencer ID fan), 03-Jul-23, 03-Jul-23
06-FGC-4-1050	PFab 2-Line 4 - 2nd Floor (EL12.47~ EL23.47m) (Including Dosing system bicar)	60	29	51.67%	04-Feb-22 A	03-Jul-23	19-Feb-23	19-Mar-23	-106					PFab 2-Line 4 - 2nd Floor (EL12.47~ EL23.47m) (Including Dosing system bicar), 03-Jul-23
06-FGC-4-1060	PFab 2-Line 4 - 3rd Floor (EL23.47~ EL34.47m) (Including Ash and residue to solidification)	60	28	53.33%	11-Feb-22 A	03-Jul-23	20-Feb-23	19-Mar-23	-106					PFab 2-Line 4 - 3rd Floor (EL23.47~ EL34.47m) (Including Ash and residue to solidification), 03-Jul-23
06-FGC-4-1070	PFab 2-Line 4 - 4th Floor (EL34.47~ EL44.22m) (Including Urea to ammonia convertor)	60	29	51.67%	06-May-22 A	03-Jul-23	19-Feb-23	19-Mar-23	-106					PFab 2-Line 4 - 4th Floor (EL34.47~ EL44.22m) (Including Urea to ammonia convertor), 03-Jul-23
E&I Installation		26	26		28-Apr-23 A	25-Jun-23	14-Mar-23	08-Apr-23	-78					
Electrical		26	26		28-Apr-23 A	25-Jun-23	14-Mar-23	08-Apr-23	-78					
06-FGC-4-1270	PFab 2-Line 4 - Electrical Heat Tracing Installation (Installation by Yard)	26	26	0%	08-May-23 A	25-Jun-23	14-Mar-23	08-Apr-23	-78					23-Jul-23*
06-FGC-4-1310	PFab 2-Line 4 - MCC room installation (Installation by Yard)	25	25	0%	28-Apr-23 A	24-Jun-23	14-Mar-23	07-Apr-23	-78					PFab 2-Line 4 - MCC room installation (Installation by Yard), 24-Jun-23, 24-Jun-23, PFab 2-Line 4
Load out & Shipping		20	20		23-Jul-23	11-Aug-23	20-Mar-23	08-Apr-23	-125					
06-FGC-4-1030	PFab 2-Line 4 - Load Out & ready to ship	20	20	0%	23-Jul-23*	11-Aug-23	20-Mar-23	08-Apr-23	-125					23-Jul-23*
Delivery		10	10		12-Aug-23	21-Aug-23	09-Apr-23	18-Apr-23	-125					
06-FGC-4-1320	PFab 2-Line 4 - Delivery	10	10	0%	12-Aug-23	21-Aug-23	09-Apr-23	18-Apr-23	-125					12-Aug-23
PFab 2 - Line 5		837	309		18-Jun-21 A	03-Apr-24	27-Mar-23	03-Apr-24	0					
Structure Erection		345	64		20-May-22 A	02-Aug-23	27-Mar-23	29-May-23	-65					
06-FGC-5-1080	PFab 2-Line 5 - 4th Floor (EL34.47~ EL44.22m) Primary & Secondary Steel Structure Erection	60	15	75%	20-May-22 A	14-Jun-23	27-Mar-23	10-Apr-23	-65					PFab 2-Line 5 - 4th Floor (EL34.47~ EL44.22m) Primary & Secondary Steel Structure Erection, 14-Jun-23, 14-Jun-23
06-FGC-5-1090	PFab 2-Line 5 - Top Floor Primary & Secondary Steel Structure Erection	60	49	18.33%	15-Apr-23 A	02-Aug-23	11-Apr-23	29-May-23	-65					PFab 2-Line 5 - Top Floor Primary & Secondary Steel Structure Erection, 02-Aug-23
Mechanical Erection		353	64		21-Jan-22 A	02-Aug-23	27-Mar-23	29-May-23	-65					
06-FGC-5-1000	PFab 2-Line 5 - 1st Floor (Below EL12.47m) (Including Silencer ID fan)	60	64	0%	21-Jan-22 A	02-Aug-23	27-Mar-23	29-May-23	-65					PFab 2-Line 5 - 1st Floor (Below EL12.47~ EL23.47m) (Including Silencer ID fan), 29-May-23
06-FGC-5-1010	PFab 2-Line 5 - 2nd Floor (EL12.47~ EL23.47m) (Including Dosing system bicar)	60	64	0%	24-Jun-22 A	02-Aug-23	27-Mar-23	29-May-23	-65					PFab 2-Line 5 - 2nd Floor (EL12.47~ EL23.47m) (Including Dosing system bicar), 29-May-23
06-FGC-5-1020	PFab 2-Line 5 - 3rd Floor (EL23.47~ EL34.47m) (Including Ash and residue to solidification)	60	64	0%	19-Sep-22 A	02-Aug-23	27-Mar-23	29-May-23	-65					PFab 2-Line 5 - 3rd Floor (EL23.47~ EL34.47m) (Including Ash and residue to solidification), 29-May-23
06-FGC-5-1030	PFab 2-Line 5 - 4th Floor (EL34.47~ EL44.22m) (Including Urea to ammonia convertor)	50	5	90%	07-Oct-22 A	02-Aug-23	25-May-23	29-May-23	-65					PFab 2-Line 5 - 4th Floor (EL34.47~ EL44.22m) (Including Urea to ammonia convertor), 29-May-23
Piping Fabrication		180	49		18-Jun-21 A	18-Jul-23	27-Mar-23	14-May-23	-65					
06-FGC-5-1170	PFab 2-Line 5 - Piping Fabrication	180	49	72.78%	18-Jun-21 A	18-Jul-23	27-Mar-23	14-May-23	-65					PFab 2-Line 5 - Piping Fabrication, 18-Jul-23, 18-Jul-23, PFab
Piping Installation		66	66		31-May-23*	04-Aug-23	27-Mar-23	31-May-23	-65					
06-FGC-5-1190	PFab 2-Line 5 - Piping Installation	66	66	0%	31-May-23*	04-Aug-23	27-Mar-23	31-May-23	-65					31-May-23*

■ Remaining Work ◆ Actual Milestone
■ Actual Work ◆ Critical Milestone
■ Critical Remaining Work
◆ Milestone

Activity ID	Activity Name	Planned Duration	Remaining Duration	Activity % Complete	Current Start	Current Finish	Late Start	Late Finish	Total Float	M66 Remarks	2023			
											May 66	Jun 67	Jul 68	Aug 69
E&I Installation														
06-FGC-5-1230	PFab 2-Line 5 - E&I Support Installation	45	45	0%	14-Jun-23	04-Aug-23	10-Apr-23	31-May-23	-65					
06-FGC-5-1240	PFab 2-Line 5 - E&I Cable Ladder Erection	45	45	0%	21-Jun-23	04-Aug-23	17-Apr-23	31-May-23	-65					
Electrical														
06-FGC-5-1270	PFab 2-Line 5 - Electrical Heat Tracing Installation (Installation by	26	26	0%	10-Jul-23	04-Aug-23	06-May-23	31-May-23	-65					
06-FGC-5-1310	PFab 2-Line 5 - MCC room installation (Installation by Yard)	25	25	0%	11-Jul-23	04-Aug-23	07-May-23	31-May-23	-65					
Insulation														
06-FGC-5-1200	PFab 2-Line 5 - Insulation	150	309	0%	30-Jun-22 A	03-Apr-24	31-May-23	03-Apr-24	0					
Load out & Shipping														
06-FGC-5-1220	PFab 2-Line 5 - Load Out & ready to ship	20	20	0%	15-Sep-23	04-Oct-23	01-Jun-23	20-Jun-23	-106					
Delivery														
06-FGC-5-1320	PFab 2-Line 5 - Delivery	10	10	0%	05-Oct-23	14-Oct-23	21-Jun-23	30-Jun-23	-106					
PFab 2 - Line 6														
Structure Erection														
06-FGC-6-1140	PFab 2-Line 6 - 4th Floor (EL34.47- EL44.22m) Primary & Secon	60	20	66.67%	20-May-22 A	19-Jun-23	26-Mar-23	14-Apr-23	-66					
06-FGC-6-1150	PFab 2-Line 6 - Top Floor Primary & Secondary Steel Structure Eri	60	60	0%	20-Mar-23 A	18-Aug-23	15-Apr-23	13-Jun-23	-66					
Mechanical Erection														
06-FGC-6-1170	PFab 2-Line 6 - 1st Floor (Below EL12.47m) (Including Silencer II	60	92	0%	21-Jan-22 A	30-Aug-23	26-Mar-23	25-Jun-23	-66					
06-FGC-6-1180	PFab 2-Line 6 - 2nd Floor (EL12.47- EL23.47m) (Including Dosing	60	73	0%	24-Jun-22 A	30-Aug-23	14-Apr-23	25-Jun-23	-66					
06-FGC-6-1190	PFab 2-Line 6 - 3rd Floor (EL23.47- EL34.47m) (Including Ash an	60	73	0%	08-Sep-22 A	30-Aug-23	14-Apr-23	25-Jun-23	-66					
06-FGC-6-1200	PFab 2-Line 6 - 4th Floor (EL34.47- EL44.22m) (Including Urea tc	60	60	0%	02-Jul-23*	30-Aug-23	27-Apr-23	25-Jun-23	-66					
Piping Fabrication														
06-FGC-6-1220	PFab 2-Line 6 - Piping Fabrication	180	62	65.56%	30-Sep-21 A	31-Jul-23	26-Mar-23	26-May-23	-66					
Piping Installation														
06-FGC-6-1000	PFab 2-Line 6 - Piping Installation	74	74	0%	31-May-23*	12-Aug-23	26-Mar-23	07-Jun-23	-66					
E&I Installation														
06-FGC-6-1240	PFab 2-Line 6 - E&I Support Installation	45	45	0%	15-Jun-23*	29-Jul-23	10-Apr-23	24-May-23	-66					
06-FGC-6-1250	PFab 2-Line 6 - E&I Cable Ladder Erection	45	45	0%	22-Jun-23	05-Aug-23	17-Apr-23	31-May-23	-66					
Electrical														
06-FGC-6-1280	PFab 2-Line 6 - Electrical Heat Tracing Installation (Installation by	26	26	0%	11-Jul-23*	05-Aug-23	06-May-23	31-May-23	-66					
06-FGC-6-1320	PFab 2-Line 6 - MCC room installation (Installation by Yard)	25	25	0%	12-Jul-23*	05-Aug-23	07-May-23	31-May-23	-66					
Load out & Shipping														
06-FGC-6-1040	PFab 2-Line 6 - Load Out & ready to ship	20	20	0%	15-Sep-23	04-Oct-23	01-Jun-23	20-Jun-23	-106					
Delivery														
06-FGC-6-1330	PFab 2-Line 6 - Delivery	10	10	0%	05-Oct-23	14-Oct-23	21-Jun-23	30-Jun-23	-106					
Fabrication of Mega Steel Structure														
Fabrication of Steel Structure														
16-8530 (6E)	Fabrication of Steel Structure (BM3) & Delivery	30	2	93.33%	06-Feb-23 A	03-Jun-23	04-May-23	25-May-23	-9					
16-8550 (6E)	Fabrication of Steel Structure (FM2) & Delivery	30	4	86.67%	27-Feb-23 A	03-Jun-23	22-May-23	25-May-23	-9					
Off-site Fabrication of Turbine Modules														
Fabrication of Module (Power Island)														
Turbine Module 1														
06-4040-1(M55)	Turbine Module 1 - TBS Tower 1 Erection & Installation	45	4	91.11%	06-Jan-23 A	03-Jun-23	30-Jun-23	03-Jul-23	30					
06-4080(6)	Turbine Module 1 - Delivery	0	0	0%	04-Jun-23	04-Jun-23	03-Jul-23	03-Jul-23	30					
Turbine Module 2														
06-4240(6)	Turbine Module 2 - TBS Tower 2 Fabrication	60	16	73.33%	20-Oct-22 A	15-Jun-23	04-Jun-23	19-Jun-23	4					
06-4240-1(M55)	Turbine Module 2 - TBS Tower 2 Erection & Installation	45	30	33.33%	01-Mar-23 A	29-Jun-23	04-Jun-23	03-Jul-23	4					
06-4280(6)	Turbine Module 2 - Delivery	33	33	0%	30-Jun-23	01-Aug-23	04-Jul-23	05-Aug-23	4					
Turbine Module 3														
06-4440(6)	Turbine Module 3 - TBS Tower 3 Fabrication	60	30	50%	30-Oct-21 A	29-Jun-23	19-Jun-23	18-Jul-23	19					
06-4440-1(M55)	Turbine Module 3 - TBS Tower 3 Erection & Installation	45	30	33.33%	01-Mar-23 A	29-Jun-23	19-Jun-23	18-Jul-23	19					
06-4480(6)	Turbine Module 3 - Delivery	33	33	0%	15-Jul-23	16-Aug-23	19-Jul-23	20-Aug-23	4					
Procurement for ACC Units														
06-1120-1	Off-site Fabrication of ACC-2 Units	178	0	100%	28-Feb-22 A	31-May-23	15-Sep-23	15-Sep-23	108					
06-1120-2	Off-site Fabrication of ACC-3 Units	178	60	66.29%	28-Feb-22 A	29-Jul-23	05-Jun-23	03-Aug-23	5					
06-1130	Factory Acceptance Test (FAT) for ACC-1	60	0	100%	28-Sep-22 A	31-May-23	21-Nov-23	21-Nov-23	175					
06-1150	Factory Acceptance Test (FAT) for ACC-3	60	60	0%	30-Jul-23	27-Sep-23	04-Aug-23	02-Oct-23	5					
Procurement for CCCW Building Equipment														
06-1420(1)	Factory Acceptance Test (FAT)	60	56	6.67%	23-Feb-23 A	25-Jul-23	05-Oct-23	29-Nov-23	127					
Procurement for Mechanical Treatment Plant Building Plant Equipment														
06-1150-1(1)	Mechanical Equipment Material Submission and Approval	180	0	100%	30-Jun-22 A	31-May-23	07-Aug-23	07-Aug-23	69					
06-1150-2(1)	Pipe Material Submission and Approval	180	0	100%	30-Jun-22 A	31-May-23	07-Aug-23	07-Aug-23	69					
06-1150-3(1)	Electrical and Instrumentation Material Submission and Approval	180	0	100%	30-Jun-22 A	31-May-23	06-Sep-23	06-Sep-23	99					
06-1160-1(1)	Mechanical Equipment Procurement (Incl. FAT)	217	63	70.97%	30-Jun-22 A	01-Aug-23	06-Jun-23	07-Aug-23	6					
06-1160-2(1)	Pipe Material Procurement (Incl. FAT)	180	18	90%	30-Jun-22 A	17-Jun-23	21-Jul-23	07-Aug-23	51					
06-1160-3(1)	Electrical and Instrumentation Material Procurement (Incl. FAT)	180	93	48.33%	08-Dec-22 A	31-Aug-23	06-Jun-23	06-Sep-23	6					

3-Month Rolling Programme (May 2023)

■ Remaining Work ◆ Actual Milestone
■ Actual Work ◆ Critical Milestone
■ Critical Remaining Work
◆ Milestone

Activity ID	Activity Name	Planned Duration	Remaining Duration	Activity % Complete	Current Start	Current Finish	Late Start	Late Finish	Total Float	M66 Remarks	2023										
											May 66	Jun 67	Jul 68	Aug 69							
Procurement for Wastewater Treatment Plant Equipment																					
06-1190-1(1)	Mechanical Equipment Material Submission and Approval	90	31	65.56%	23-Jun-22 A	27-Sep-23	26-Jul-23	24-Oct-23	27												
06-1190-2(1)	Pipe Material Submission and Approval	90	31	65.56%	23-Jun-22 A	30-Jun-23	26-Jul-23	25-Aug-23	56												
06-1190-3(1)	Electrical and Instrumentation Material Submission and Approval	90	31	65.56%	29-Jul-22 A	29-Jul-23	26-Jul-23	25-Aug-23	27												
06-1200-1(1)	Mechanical Equipment Procurement (Incl. FAT)	0	0	0%	31-May-23	31-May-23	25-Aug-23	25-Aug-23	87												
06-1200-2(1)	Pipe Material Procurement (Incl. FAT)	0	0	0%	31-May-23	31-May-23	25-Aug-23	25-Aug-23	87												
06-1200-3(1)	Electrical and Instrumentation Material Procurement (Incl. FAT)	0	60	0%	09-Aug-22 A	28-Aug-23	27-Jul-23	24-Sep-23	27												
06-1220	Delivery to Site	60	60	0%	30-Jul-23	27-Sep-23	26-Aug-23	24-Oct-23	27												
Procurement for Desal & Demin Plant Equipment																					
06-1230-1(1)	Mechanical Equipment Material Submission and Approval	90	30	66.67%	08-Jan-22 A	29-Jul-23	07-Jul-23	05-Aug-23	7												
06-1230-2(1)	Pipe Material Submission and Approval	90	30	66.67%	08-Jan-20 A	29-Jul-23	07-Jul-23	05-Aug-23	7												
06-1230-3(1)	Electrical and Instrumentation Material Submission and Approval	90	30	66.67%	16-Apr-20 A	29-Jun-23	07-Jul-23	05-Aug-23	37												
06-1240-1(1)	Mechanical Equipment Procurement (Incl. FAT)	60	30	50%	01-Jun-22 A	28-Aug-23	05-Sep-23	04-Oct-23	37												
06-1240-2(1)	Pipe Material Procurement (Incl. FAT)	60	60	0%	30-Jul-23	27-Sep-23	06-Aug-23	04-Oct-23	7												
06-1240-3(1)	Electrical and Instrumentation Material Procurement (Incl. FAT)	60	60	0%	30-Jul-23	27-Sep-23	06-Aug-23	04-Oct-23	7												
06-1260-1(M55)	WTP chemical storage tank Material Submission and Approval	120	1	99.17%	21-Apr-22 A	29-Jun-23	24-Feb-24	24-Feb-24	240												
06-1260-2(M55)	WTP chemical storage tank Procurement (Incl. FAT)	180	1	99.44%	22-Apr-22 A	29-Jul-23	25-Mar-24	25-Mar-24	240												
Procurement for HV Transformers and Associated Equipment																					
Procurement of Transformers & EDG																					
06-1290(1)	Factory Acceptance Test (FAT)	120	120	0%	31-May-23	27-Sep-23	11-Jul-23	07-Nov-23	41												
Procurement of Switchboard/Pannels and Cables																					
06-2090(1)	Material Submission and Approval	60	6	90%	31-May-22 A	05-Jun-23	17-Jul-23	22-Jul-23	47												
06-2100(1)	Material & Equipment Procurement	240	60	75%	31-May-22 A	04-Aug-23	23-Jul-23	20-Sep-23	47												
06-2110(1)	Factory Acceptance Test (FAT)	90	90	0%	06-Jun-23	03-Sep-23	23-Jul-23	20-Oct-23	47												
Procurement for Control SCADA Systems																					
06-1310	Scada System Procurement, Panel Assembly & Wiring	140	30	78.57%	23-May-22 A	29-Jun-23	23-Jul-23	21-Aug-23	53												
06-1330	Factory Acceptance Test (FAT)	120	120	0%	30-Jun-23	27-Oct-23	22-Aug-23	19-Dec-23	53												
Procurement for Onshore Crane at Berth																					
06-1350	Supplier Submission and Approval	60	2	96.67%	04-Dec-22 A	01-Jun-23	30-Jul-23	31-Jul-23	60												
06-1360	Material & Equipment Procurement	300	300	0%	02-Jun-23	27-Mar-24	01-Aug-23	26-May-24	60												
Procurement and Off-site Fabrication of Pipe Bridges (Incl. Pipings)																					
Fabrication of Pipe Rack (Prefab.3)																					
Pipe Rack 1																					
06-5030(6)	Pre-commissioning (FAT)	31	2	93.55%	02-Mar-23 A	01-Jun-23	20-Sep-23	21-Sep-23	112												
Pipe Rack 2																					
06-5100(6)	Pre-commissioning (FAT)	31	0	100%	02-Mar-23 A	31-May-23	21-Sep-23	21-Sep-23	114												
Pipe Rack 3																					
06-5160(6)	Piping installation	61	0	100%	17-Apr-22 A	31-May-23	21-Aug-23	21-Aug-23	83												
06-5170(6)	Pre-commissioning (FAT)	31	31	0%	31-May-23	30-Jun-23	22-Aug-23	21-Sep-23	83												
Fabrication of Pipe Bridge B																					
Pipe Bridge B Between CCCW and Turbine Hall																					
06-5300(6)	Structure Cutting, Painting & Pre-assembly	180	0	100%	15-Oct-21 A	31-May-23	05-Jun-23	05-Jun-23	6												
06-5310(6)	Erection & Fabrication	31	5	83.87%	15-Mar-23 A	04-Jun-23	06-Jun-23	10-Jun-23	6												
06-5320(6)	Piping installation	46	46	0%	05-Jun-23	20-Jul-23	11-Jun-23	26-Jul-23	6												
06-5330(6)	Pre-commissioning (FAT)	31	31	0%	21-Jul-23	20-Aug-23	27-Jul-23	26-Aug-23	6												
06-5340(6)	Load out & ready to ship	15	15	0%	21-Aug-23	04-Sep-23	27-Aug-23	10-Sep-23	6												
Pipe bridge B1 & B2 on the Roof of Turbine Hall																					
06-5370(6D)	Erection & Fabrication	31	8	74.19%	15-Mar-23 A	07-Jun-23	04-Jun-23	11-Jun-23	4												
06-5380(6D)	Piping installation	46	46	0%	08-Jun-23	23-Jul-23	12-Jun-23	27-Jul-23	4												
06-5390(6D)	Pre-commissioning (FAT)	31	31	0%	24-Jul-23	23-Aug-23	28-Jul-23	27-Aug-23	4												
06-5390-1(6D)	Load out & ready to ship	15	15	0%	24-Aug-23	07-Sep-23	28-Aug-23	11-Sep-23	4												
Fabrication of Pipe Bridge C																					
Pipe Bridge C between Turbine Hall & ACC -1																					
06-5410(6)	Erection & Fabrication	61	15	75.41%	23-Feb-23 A	14-Jun-23	04-Jun-23	18-Jun-23	4												
06-5420(6)	Piping installation	40	40	0%	15-Jun-23	24-Jul-23	19-Jun-23	28-Jul-23	4												
06-5430(6)	Pipe Bridge C - ACC-1 Pre-commissioning (FAT)	30	30	0%	25-Jul-23	23-Aug-23	29-Jul-23	27-Aug-23	4												
Pipe Bridge C between Turbine Hall & ACC -2																					
06-5450(6)	Erection & Fabrication	61	15	75.41%	23-Feb-23 A	14-Jun-23	04-Jun-23	18-Jun-23	4												
06-5460(6)	Piping installation	40	40	0%	15-Jun-23	24-Jul-23	19-Jun-23	28-Jul-23	4												
06-5470(6)	Pipe Bridge C - ACC-2 Pre-commissioning (FAT)	30	30	0%	25-Jul-23	23-Aug-23	29-Jul-23	27-Aug-23	4												
Pipe Bridge C between Turbine Hall & ACC -3																					
06-5490(6)	Erection & Fabrication	61	15	75.41%	23-Feb-23 A	14-Jun-23	04-Jun-23	18-Jun-23	4												
06-5500(6)	Piping installation	40	40	0%	15-Jun-23	24-Jul-23	19-Jun-23	28-Jul-23	4												
06-5510(6)	Pipe Bridge C - ACC-3 Pre-commissioning (FAT)	30	30	0%	25-Jul-23	23-Aug-23	29-Jul-23	27-Aug-23	4												
06-5520(6)	ACC-1 to 3 Load out & ready to ship	7	7	0%	24-Aug-23	30-Aug-23	28-Aug-23	03-Sep-23	4												
Procurement for LV Electrical System for On-site Installation																					

Activity ID	Activity Name	Planned Duration	Remaining Duration	Activity % Complete	Current Start	Current Finish	Late Start	Late Finish	Total Float	M66 Remarks	2023				
											May 66	Jun 67	Jul 68	Aug 69	
06-1440	Material & Equipment Procurement	180	30	83.33%	01-Mar-22 A	27-Sep-23	05-Jun-24	04-Jul-24	281						
Procurement for Ventilation and Odor Treatment System															
06-1470(1)	Material Submission and Approval	60	60	0%	04-May-23 A	29-Jul-23	03-Jun-23	08-Sep-23	41						
06-1820(6C)	Material Submission & Equipment Procurement (for IWMF Subst)	60	30	50%	04-May-23 A	29-Jun-23	03-Jun-23	02-Jul-23	3						
06-1820-1(6C)	Delivery to Site	60	60	0%	31-May-23	29-Jul-23	03-Jun-23	01-Aug-23	3						
Procurement for Fire Services System															
IWMF Substation															
06-1810(6)	Material Submission & Equipment Procurement (For IWMF Subs	120	0	100%	31-May-22 A	31-May-23	30-May-23	30-May-23	0						
06-1820(6)	Factory Acceptance Test (FAT)	90	0	100%	01-Jan-23 A	31-May-23	30-May-23	30-May-23	0						
06-1830(6)	Delivery to Site	30	0	100%	08-May-23 A	07-Jun-23	06-Jun-23	06-Jun-23	0						
Procurement for Drainage System															
06-1620-1(6C)	Material Submission & Equipment Procurement (for IWMF Subst)	60	30	50%	19-May-23 A	29-Jun-23	18-Jun-23	17-Jul-23	18						
06-1620-2(6C)	Delivery to Site	30	30	0%	15-Jun-23	14-Jul-23	03-Jul-23	01-Aug-23	18						
Procurement for Lighting System															
06-1630	Material Submission and Approval	30	30	0%	31-May-23	29-Jun-23	23-Jun-23	22-Jul-23	23						
06-1640	Material & Equipment Procurement	90	90	0%	30-Jun-23	27-Sep-23	23-Jul-23	20-Oct-23	23						
06-1650	Factory Acceptance Test (FAT)	90	90	0%	15-Jul-23	12-Oct-23	07-Aug-23	04-Nov-23	23						
Procurement for Crange Equipment															
Waste Crane															
06-1720	Material & Equipment Procurement	180	0	100%	02-Aug-21 A	31-May-23	12-Sep-23	12-Sep-23	105						
Ash Crane															
06-1830	Material & Equipment Procurement	180	0	100%	11-Aug-21 A	31-May-23	13-Oct-23	13-Oct-23	136						
Shredder															
06-1870	Material & Equipment Procurement	260	30	0%	27-May-22 A	29-Jun-23	14-Aug-23	13-Sep-23	76						
06-1880	Manufacture and Factory Acceptance Test (FAT)	85	0	100%	27-May-22 A	31-May-23	14-Aug-23	14-Aug-23	76						
EOTC															
06-1910	Material & Equipment Procurement	242	26	0%	19-Apr-22 A	25-Jun-23	15-Jul-23	10-Aug-23	46						
06-1920	Factory Acceptance Test (FAT)	180	8	95.56%	19-Apr-22 A	07-Jun-23	15-Jul-23	23-Jul-23	46						
06-1920	Factory Acceptance Test (FAT)	150	26	82.67%	11-Oct-22 A	25-Jun-23	15-Jul-23	10-Aug-23	46						
06-1940(M54)	EOTC Delivery to Site Batch 1	0	0	0%	31-May-23	31-May-23	15-Jul-23	15-Jul-23	46						
Holist System															
06-8310(M57)	Material & Equipment Procurement	120	120	0%	31-May-23	27-Sep-23	11-Jun-23	08-Oct-23	11						
06-8320(M57)	Manufacture and Factory Acceptance Test (FAT)	90	90	0%	31-May-23	28-Aug-23	11-Jun-23	08-Sep-23	11						
Procurement for Soft Landscape Materials															
06-1790	Material Submission and Approval	90	90	0%	30-Jun-23	27-Sep-23	11-Jul-23	08-Oct-23	11						
06-1800	Material Procurement & Nursery	510	510	0%	24-Jun-23	14-Nov-24	24-Jun-23	14-Nov-24	0						
Procurement for Air Quality Monitoring Station Equipment															
06-2160(1)	Material Procurement	60	60	0%	24-Jun-23	22-Aug-23	24-Jun-23	22-Aug-23	0						
06-2200(1)	Delivery to Site	450	450	0%	23-Aug-23	14-Nov-24	23-Aug-23	14-Nov-24	0						
Procurement for Air Compressor Equipment															
06-1890(1)	Factory Acceptance Test (FAT)	184	33	0%	31-Dec-22 A	02-Jul-23	30-Apr-23	01-Jun-23	-31						
06-2160(1)	Material Procurement	150	3	98%	31-Dec-22 A	02-Jun-23	30-Apr-23	02-May-23	-31						
06-2200(1)	Delivery to Site	30	30	0%	03-Jun-23	02-Jul-23	03-May-23	01-Jun-23	-31						
Procurement for Weighbridge System															
06-2220(1)	Material & Equipment Procurement	16	0	100%	09-Aug-22 A	31-May-23	02-Nov-23	02-Nov-23	156						
Procurement for Pipes and Insulation for on site installations															
06-2250(1)	Material Submission and Approval	90	90	0%	01-Aug-23	29-Oct-23	02-Aug-23	30-Oct-23	1						
06-2260(1)	Material & Equipment Procurement	90	90	0%	01-Aug-23	29-Oct-23	02-Aug-23	30-Oct-23	1						
06-2270(1)	Delivery to Site	429	64	0%	31-May-22 A	02-Aug-23	23-Jul-23	24-Sep-23	53						
Procurement for Building Finishes Materials (Doors, windows and louvers i.e...)															
06-8030(6)20	Reception Pavilion - Material Submission, Procurement, FAT and	60	4	93.33%	31-May-22 A	03-Jun-23	23-Jul-23	26-Jul-23	53						
06-8030(6)70	IWMF Substation - Material Submission, Procurement, FAT and C	120	15	87.5%	01-Jun-22 A	03-Jul-23	11-Aug-23	25-Aug-23	53						
Off-site Precasting of Facade Panels															
06-8040(6D)	Procurement of Precast Concrete Wall Panel Moulding & Fabricati	30	30	0%	04-Jul-23	02-Aug-23	26-Aug-23	24-Sep-23	53						
IWMF Substation															
06-8070(6D)	Precasting of Concrete Panels	355	355	0%	05-Jun-23	24-May-24	03-Jul-23	01-Jun-24	8						
06-8080(6D)	Factory Acceptance Test (FAT)	300	300	0%	30-Jul-23	24-May-24	07-Aug-23	01-Jun-24	8						
06-8090(6D)	Delivery to Site	90	90	0%	05-Jun-23	02-Sep-23	03-Jul-23	30-Sep-23	28						
Procurement for Marine Vessels & Vehicles															
06-8200(6D)10	Material Submission and Approval	212	120	0%	14-Feb-23 A	27-Sep-23	31-May-23	28-Sep-23	1						
06-8210-1(6D)	Material & Equipment Procurement	60	0	100%	14-Feb-23 A	31-May-23	31-May-23	31-May-23	1						
Procurement for IWMF Equipments for BS Works															
06-8310(6E)	Material & Equipment Procurement	120	120	0%	31-May-23	27-Sep-23	01-Jun-23	28-Sep-23	1						
06-8320(6E)	Factory Acceptance Test (FAT)	60	60	0%	31-May-23	29-Jul-23	01-Jun-23	30-Jul-23	1						
06-8330(6E)	Delivery to Site	60	60	0%	30-Jun-23	28-Aug-23	01-Jul-23	29-Aug-23	1						
Delivery of Cast-in pipes, Fittings and Anchor Bolts for Structures (if applicable)															
04-1805(6F)	Wastewater Treatment Plant (30d)	180	180	0%	01-Jun-23	27-Nov-23	29-Jun-23	25-Dec-23	28						
04-1830(6F)	Chimney (30d)	30	30	0%	01-Jun-23	30-Jun-23	29-Jun-23	28-Jul-23	28						
04-1840(6F)	Mechanical Treatment Plant & Water Treatment Plant (90d)	150	150	0%	01-Jul-23	27-Nov-23	29-Jul-23	25-Dec-23	28						

3-Month Rolling Programme (May 2023)

- Remaining Work
- Actual Work
- Critical Remaining Work
- Milestone
- Actual Milestone
- Critical Milestone

Activity ID	Activity Name	Planned Duration	Remaining Duration	Activity % Complete	Current Start	Current Finish	Late Start	Late Finish	Total Float	M66 Remarks	2023										
											May 66	Jun 67	Jul 68	Aug 69							
04-1860(6F)	Administration Building and Viewing Gallery (90d)	0	0	0%	21-Jul-23		21-Jul-23		0												
04-1870(6F)	Elevated Drive Way and Associated Structures (90d)	0	0	0%	31-May-23		12-May-23		-19												
Maritime Works																					
Marine Construction																					
Phase I - Construction of Perimeter Seawalls																					
Seawall and Berth at DCM Area																					
Seawall Structural Works																					
08-1115(3)	Caisson infill, Solid ballast, toe protection, precast concrete block:	250	63	74.8%	30-Nov-19 A	26-Nov-23	06-Nov-23	29-Aug-24	277												
Remain Works																					
08-1120	Construction of Seawall and Wave Wall Extension from +3mPD to	220	120	45.45%	10-Oct-21 A	27-Sep-23	06-Nov-23	03-Jun-24	250												
08-1120-1(6)	Construction of Seawall and Wave Wall Extension from +3mPD to	220	75	65.91%	10-Oct-21 A	13-Aug-23	21-Jan-24	04-Apr-24	235												
08-1120-2(M55)	Construction of Seawall and Wave Wall Extension from +3mPD to	60	30	50%	31-May-22 A	29-Jun-23	06-Nov-23	05-Dec-23	159												
08-1120-4(M55)	Construction of Seawall and Wave Wall Extension from +3mPD to	60	30	50%	31-May-22 A	29-Jun-23	05-May-24	03-Jun-24	340												
Seawall at Dredging Area																					
Remain Works																					
08-1170	Construction of Seawall and Wave Wall Extension from +3mPD to	160	43	73%	11-Jul-22 A	13-Jul-23	15-Nov-23	28-Dec-23	169												
Phase II - Reclamation, Breakwater and Berth Construction																					
Breakwater																					
08-1295(3)	Caisson Infill, Solid ballast, toe protection, precast concrete block:	200	50	75%	30-Apr-21 A	19-Jul-23	16-Jan-24	05-Mar-24	230												
Remain Works																					
08-1300	Construction of Caissons Extension from +3mPD to Deck Level	120	180	0%	31-May-22 A	26-Nov-23	07-Dec-23	03-Jun-24	190												
Seawall and Berth at Marine Access																					
08-1320(5A)	Caisson Infill, Solid ballast, toe protection, precast concrete block:	90	23	74.44%	08-Feb-21 A	22-Jun-23	12-Feb-24	05-Mar-24	257												
Seawater Intake Structure																					
08-2400(6D)	Construction of Seawater Intake	90	75	16.67%	22-Mar-23 A	16-Aug-23	16-Jun-24	29-Aug-24	379												
Foundation Works																					
Administration & Viewing Gallery Bld Foundation																					
Administration & Viewing Gallery Bld Piling Works (Driven H-pile)																					
09-1060	Driven H Pile Installations (141 nrs ~60m(D) & (16 nrs ~60m(D), (79	22	72.15%	01-Mar-23 A	29-Jun-23	31-May-23	29-Jun-23	0												
09-1080	Pile Load Test	8	8	0%	22-Jun-23	29-Jun-23	22-Jun-23	29-Jun-23	0												
Administration & Viewing Gallery Bld Pile Caps Construction																					
09-1090	Excavation to Pile Cap Formation	60	60	0%	30-Jun-23	28-Aug-23	30-Jun-23	28-Aug-23	0												
09-1110	Pile Caps Construction	90	90	0%	14-Jul-23	11-Oct-23	14-Jul-23	11-Oct-23	0												
Process Building - Waste Bunker & Tipping Hall Bld Foundation																					
Process Building Pile Cap Construction																					
Pile Cap Stage 1 (Module 1)																					
Process Building (Module 1) Tipping Hall																					
09-1180	Excavation to Pile Cap Formation	25	5	80%	09-Feb-23 A	07-Jun-23	31-Mar-24	02-May-24	330												
09-1190	Pile Cut-off & Capping Plate (76 nrs, 4nr/d)	19	2	89.47%	23-Feb-23 A	07-Jun-23	01-May-24	02-May-24	330												
Pile Cap Stage 3 (Module 3)																					
Process Building (Module 3) WWTP																					
09-1240	Excavation to Pile Raft Foundation Formation	25	25	0%	31-May-23	24-Jun-23	07-Jul-23	31-Jul-23	37												
09-1250	Pile Cut-off & Capping Plate (168 nrs, 10nr/d)	17	17	0%	10-Jun-23	27-Jun-23	22-Jul-23	08-Aug-23	42												
09-1260	Pile Caps and Raft Foundation Construction (60m x 24m 4set@10	26	26	0%	15-Jun-23	11-Jul-23	22-Jul-23	17-Aug-23	37												
Process Building (Module 3) Bunker																					
09-2440	Pile Caps Construction (60m x 32m 4set@100m2/7day)	21	7	66.67%	09-May-23 A	06-Jun-23	07-Jun-23	13-Jun-23	7												
ACC Equipment Foundation																					
ACC Pile Cap Construction																					
09-1700	Pile Cut-off & Capping Plate (Module 1)	18	3	83.33%	03-Feb-23 A	02-Jun-23	22-Aug-23	24-Aug-23	83												
09-1710	Pile Caps Construction (Module 1)	30	30	0%	03-Jun-23*	02-Jul-23	25-Aug-23	23-Sep-23	83												
09-1710-1(M58)	Excavation to Pile Caps formation and construction (Module 2 & 3)	30	30	0%	24-Aug-23	22-Sep-23	22-Jul-23	20-Aug-23	-33												
09-1710-2(M58)	Tie Beams & Slab Construction (Module 2 & 3 @+6.5m PD)	30	30	0%	23-Sep-23	22-Oct-23	21-Aug-23	19-Sep-23	-33												
Turbine Hall Bld Foundation																					
Turbine Hall Pile Caps Construction																					
Electrical Bld & TBS1																					
09-1770-1(M58)	Install anchor bolts & Floor Finishes for TBS1 @+6.3mPD (Post-c	14	14	0%	31-May-23	13-Jun-23	30-Jul-23	12-Aug-23	60												
TBS2 & 3																					
09-1770-2(6G)	Pile Cut-off & Capping Plate (121 nrs, @10nr/d)	12	12	0%	24-Aug-23	04-Sep-23	20-Apr-23	01-May-23	-126												
09-1770-3(M62)	Excavation & construction of 4.2x5.5m pit for TBS2&3 @2mPD	21	21	0%	24-Aug-23	13-Sep-23	20-Apr-23	10-May-23	-126												
09-1780	Pile Caps Construction	14	14	0%	05-Sep-23	18-Sep-23	02-May-23	15-May-23	-126												
Compressor & CCCW Bld Foundation																					
CCCW Pile Caps Construction																					
09-2340	Excavation to Pile Cap Formation	43	10	76.74%	06-Feb-23 A	15-Jul-23	24-Jun-23	08-Aug-23	24												
09-2350	Pile Cut-off & Capping Plate (68 nrs, @10nr/d)	28	10	64.29%	14-Feb-23 A	10-Jun-23	25-Jun-23	04-Jul-23	24												
09-2350-1(6)	Pile Caps Construction to +5.85mPD (9 nrs, @0.2nr/d)	45	30	33.33%	21-Feb-23 A	29-Jun-23	25-Jun-23	24-Jul-23	25												

3-Month Rolling Programme (May 2023)

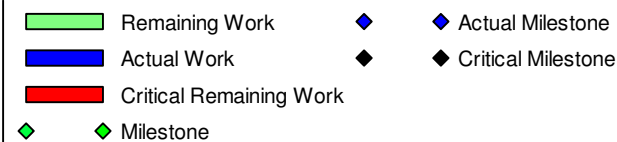
Remaining Work
 Actual Work
 Critical Remaining Work
 Milestone
 Actual Milestone
 Critical Milestone

Activity ID	Activity Name	Planned Duration	Remaining Duration	Activity % Complete	Current Start	Current Finish	Late Start	Late Finish	Total Float	M66 Remarks	2023				
											May 66	Jun 67	Jul 68	Aug 69	
Process Building - Boiler & Flue Gas Treatment Bid Structure															
Steel Structure															
Boiler Building Steel Structure															
Process Building (Module 2) Steel Structure Erection															
10-1680	Roof Cladding Installation	60	60	0%	31-May-23	29-Jul-23	11-Mar-23	09-May-23	-81		31-May-23				29-Jul-23, Roof Cladding Installation
Process Building (Module 3) Process Building Steel Structure Erection															
10-1690	Erection of Mega Columns (2nos @30d /column /gang x 2)	30	3	90%	20-Apr-23 A	02-Jun-23	06-May-23	08-May-23	-25						Erection of Mega Columns (2nos @30d /column /gang x 2), 02-Jun-23, 02-Jun-23, Erection of Mega Columns (2nos @30d /column
10-1700	Steel Roof Truss Ground Assembly Works	30	3	90%	20-Apr-23 A	04-Jun-23	06-May-23	08-May-23	-27						Steel Roof Truss Ground Assembly Works, 04-Jun-23, 04-Jun-23, Steel Roof Truss Ground Assembly Works
10-1710	Steel Roof Truss Lifting (BM3)	14	1	92.86%	22-Apr-23 A	05-Jun-23	09-May-23	09-May-23	-27						Steel Roof Truss Lifting (BM3), 05-Jun-23, 05-Jun-23, Steel Roof Truss Lifting (BM3)
10-1720	Roof Cladding Installation	60	60	0%	30-Jul-23	27-Sep-23	10-May-23	08-Jul-23	-81						30-Jul-23
Flue Gas Treatment Bid Steel Structure															
Process Building (Module 1) Steel Structure Erection															
10-1750	Steel Roof Truss Lifting (FM1)	14	14	0%	31-May-23	13-Jun-23	30-Jul-23	12-Aug-23	60		31-May-23				13-Jun-23, Steel Roof Truss Lifting (FM1)
10-1760	Roof Cladding Installation	30	30	0%	14-Jun-23	13-Jul-23	13-Aug-23	11-Sep-23	60						14-Jun-23
Process Building (Module 3) Steel Structure Erection															
10-1810	Erection of Mega Columns (1nos @30d /column /gang x 1)	30	30	0%	04-Jun-23	03-Jul-23	26-May-23	24-Jun-23	-9		04-Jun-23				03-Jul-23, Erection of Mega Columns (1nos @30d /column /gang x 1)
10-1820	Steel Roof Truss Ground Assembly Works	30	30	0%	16-Jun-23	15-Jul-23	26-May-23	24-Jun-23	-21						16-Jun-23
10-1830	Steel Roof Truss Lifting (FM3)	14	14	0%	12-Oct-23	25-Oct-23	25-Jun-23	08-Jul-23	-109						
10-1840	Roof Cladding Installation	30	30	0%	11-Nov-23	10-Dec-23	09-Jul-23	07-Aug-23	-125						
10-1900	Facade Structural Frame Installation at Module 3	60	60	0%	11-Dec-23	08-Feb-24	08-Aug-23	06-Oct-23	-125						
Turbine Hall Bid Structure															
Turbine Hall Electrical Bid															
10-1910	Slab to +6.0mPD	14	19	0%	14-Feb-23 A	18-Jun-23	07-Jun-23	25-Jun-23	7						18-Jun-23, Slab to +6.0mPD, Slab to +6.0mPD, 18-Jun-23
10-1920	Column & Wall to +15.0mPD	10	10	0%	19-Jun-23	28-Jun-23	26-Jun-23	05-Jul-23	7						19-Jun-23
10-1930	Beam & Slab to +15.0mPD	10	10	0%	29-Jun-23	08-Jul-23	06-Jul-23	15-Jul-23	7						29-Jun-23
10-1940	Column & Wall to +19.5mPD	10	10	0%	09-Jul-23	18-Jul-23	16-Jul-23	25-Jul-23	7						09-Jul-23
10-1950	Beam & Slab to +19.5mPD	10	10	0%	19-Jul-23	28-Jul-23	26-Jul-23	04-Aug-23	7						19-Jul-23
10-1960	Column & Wall to +23.5mPD	10	10	0%	29-Jul-23	07-Aug-23	05-Aug-23	14-Aug-23	7						29-Jul-23
10-1970	Beam & Slab to +23.5mPD	10	10	0%	11-Aug-23	20-Aug-23	18-Aug-23	27-Aug-23	7						11-Aug-23
10-1980	Column & Wall to +28.0mPD	10	10	0%	21-Aug-23	30-Aug-23	28-Aug-23	06-Sep-23	7						21-Aug-23
Turbine Hall TBS1															
10-2310	Column & Wall to +15.0mPD & +23.5mPD	30	30	0%	26-May-23 A	29-Jun-23	26-May-23 A	24-Jun-23	-5		26-May-23 A, 26-May-23 A				Column & Wall to +15.0mPD & +23.5mPD, 29-Jun-23, 29-Jun-23, Column & Wall to +15.0
10-2320	Beam & Slab to +28.0mPD	21	21	0%	30-Jun-23	20-Jul-23	25-Jun-23	15-Jul-23	-5						30-Jun-23
STG Foundation (PC1)															
10-1990-1(M58)	STG Foundation construction and install anchor bolts @ +9.5	21	21	0%	31-May-23	20-Jun-23	09-Jul-23	29-Jul-23	39		31-May-23				20-Jun-23, STG Foundation construction and install anchor bolts @ +9.5
10-1990-2(M58)	STG Foundation construction and install anchor bolts @ +10.77	10	10	0%	21-Jun-23	30-Jun-23	30-Jul-23	08-Aug-23	39						21-Jun-23
Turbine Hall TBS2 & 3															
10-2000	Ground Beam and Slab to +6.0mPD and install anchor bolts & Flo	30	30	0%	19-Sep-23	18-Oct-23	16-May-23	14-Jun-23	-126						
10-2010	Column & Wall to +15.0mPD & +23.5mPD	35	35	0%	19-Oct-23	22-Nov-23	15-Jun-23	19-Jul-23	-126						
10-2020	Beam & Slab to +28.0mPD	30	30	0%	17-Nov-23	16-Dec-23	14-Jul-23	12-Aug-23	-126						
STG Foundation (PC2)															
10-1990-3(M58)	STG Foundation construction and install anchor bolts @ +9.5	21	21	0%	05-Sep-23	25-Sep-23	18-Jul-23	07-Aug-23	-49						05-Sep-23
10-1990-4(M58)	STG Foundation construction and install anchor bolts @ +10.77	10	10	0%	26-Sep-23	05-Oct-23	08-Aug-23	17-Aug-23	-49						
STG Foundation (PC3)															
10-1990-5(M58)	STG Foundation construction and install anchor bolts @ +9.5	21	21	0%	05-Sep-23	25-Sep-23	20-Jul-23	09-Aug-23	-47						05-Sep-23
10-1990-6(M58)	STG Foundation construction and install anchor bolts @ +10.77	10	10	0%	26-Sep-23	05-Oct-23	10-Aug-23	19-Aug-23	-47						
Compressor & CCW Bid Structure															
10-2030	Slab to +6.5mPD & install anchor bolts	21	21	0%	16-Jul-23	05-Aug-23	09-Aug-23	29-Aug-23	24						16-Jul-23
10-2040	Column & Wall to +14.0mPD	21	21	0%	30-Jul-23	19-Aug-23	23-Aug-23	12-Sep-23	24						30-Jul-23
Chimney Structure															
10-2059	Excavation to Formation Level and Install Tower Crane	60	60	0%	13-Sep-23	11-Nov-23	22-Jul-23	19-Sep-23	-53	Extracted Activity					
Mechanical Treatment Plant Bid Structure															
10-2090	Ground Slab @+6.5mPD	21	21	0%	09-Aug-23	29-Aug-23	15-Jul-23	04-Aug-23	-25						09-Aug-23
10-2095	Column & Wall to +13.5mPD	21	21	0%	30-Aug-23	19-Sep-23	05-Aug-23	25-Aug-23	-25						30-Aug-23
10-2096	1/F Slab @+13.5mPD	21	21	0%	20-Sep-23	10-Oct-23	26-Aug-23	15-Sep-23	-25						
Water Treatment Plant Bid Structure															
10-2300(6F)	WTP Lower Ground Slab @+3.9mPD	21	21	0%	29-Aug-23	18-Sep-23	21-Aug-23	10-Sep-23	-8						29-Aug-23
IWMF Substation Structure															
10-2170	Ground Slab and Beam to +6mPD	21	7	66.67%	31-Mar-23 A	06-Jun-23	13-May-23	19-May-23	-18						Ground Slab and Beam to +6mPD, 06-Jun-23, 06-Jun-23, Ground Slab and Beam to +6mPD
10-2180	Column, wall, beam and Slab to +9.0mPD	21	18	14.29%	16-May-23 A	24-Jun-23	20-May-23	06-Jun-23	-18		23 A, 16-May-23 A				Column, wall, beam and Slab to +9.0mPD, 24-Jun-23, 24-Jun-23, Column, wall, beam and Slab to
10-2190	Column, wall, beam and Roof Slab to +15.0mPD	21	21	0%	25-Jun-23	15-Jul-23	12-Jul-23	01-Aug-23	17						25-Jun-23
10-2200	Parapet and Structures above +15.0mPD	21	21	0%	16-Jul-23	05-Aug-23	15-Aug-23	04-Sep-23	30						16-Jul-23
Elevated Drive Way and Associated Structures															
Elevated Drive Way RSU to RSAF (99m)															
10-2360(M57)	G/F Base Slab	45	45	0%	29-Aug-23	12-Oct-23	10-Aug-23	23-Sep-23	-19						29-Aug-23
Architectural Builders Works & Finishes															

■ Remaining Work ◆ Actual Milestone
■ Actual Work ◆ Critical Milestone
■ Critical Remaining Work
◆ Milestone

Activity ID	Activity Name	Planned Duration	Remaining Duration	Activity % Complete	Current Start	Current Finish	Late Start	Late Finish	Total Float	M66 Remarks	2023			
											May 66	Jun 67	Jul 68	Aug 69
IWMF Substation AB WF Works														
11-1350	Metal Railings, Platforms, Gargings, Cable trench covers Installati	90	90	0%	16-Jul-23	13-Oct-23	27-Jul-23	30-Oct-23	17					
11-1360	Internal Wall and Floor Finishes	90	90	0%	16-Jul-23	13-Oct-23	02-Aug-23	30-Oct-23	17				16-Jul-23	
11-1560-1(M63)	Facade Structural Frame Installation	64	64	0%	25-Jul-23	26-Sep-23	27-Jul-23	28-Sep-23	2				16-Jul-23	
Building Services Installation														
IWMF Substation BS Works														
12-1470	Plumbing & Drainage System	120	120	0%	16-Jul-23	12-Nov-23	02-Aug-23	29-Nov-23	17				16-Jul-23	
12-1480	MVAC System	120	120	0%	30-Jul-23	26-Nov-23	02-Aug-23	29-Nov-23	3				16-Jul-23	
12-1490	Fire Service System	120	120	0%	25-Jun-23	22-Oct-23	07-Jun-23	04-Oct-23	-18				25-Jun-23	
12-1500	Electrical and Lighting System	120	120	0%	29-Jul-23	25-Nov-23	02-Aug-23	29-Nov-23	4				29-Jul-23	
Process Equipment Installation														
Process Building - Waste Bunker & Tipping Hall Bid Process Equipment Install														
Piping and Instrument Installation and Connection Works														
Process Building (Module 1)														
12-3000(6F)	Embedded Piping Installation	180	180	0%	31-May-23	26-Nov-23	07-Jul-23	02-Jan-24	37				31-May-23	
Process Building (Module 2)														
12-3040(6F)	Embedded Piping Installation	180	180	0%	31-May-23	26-Nov-23	13-Aug-23	08-Feb-24	74				31-May-23	
Process Building (Module 3)														
12-3080(6F)	Embedded Piping Installation	180	180	0%	17-Jun-23	13-Dec-23	20-Aug-23	15-Feb-24	64				17-Jun-23	
Process Building (WWTP)														
12-3120(6F)	Delivery of Embedded Piping above +2 to +10mPd (30days)	0	0	0%	31-May-23	29-Jul-23	18-Jul-23	06-Oct-23	69					
12-3140(6F)	Delivery of Embedded Piping above +10.1 to +12.5mPd (30days)	0	0	0%	31-May-23	15-Jun-23		22-Jul-23	37					
12-3160(6F)	Piping Installation Works	60	60	0%	31-May-23	29-Jul-23	08-Aug-23	06-Oct-23	69				31-May-23	29-Jul-23, Piping Installation Works
Process Building (WWTP)														
13-1010-1(6)	WWTP Piping and instrument installation	145	145	0%	31-May-23	29-Oct-23	08-Aug-23	06-Jan-24	69				31-May-23	
13-1010-2(6)	WWTP Electrical Equipment installation & Cable pulling and term	145	145	0%	07-Jun-23	29-Oct-23	15-Aug-23	06-Jan-24	69				07-Jun-23	
Process Building - Boiler House & Flue Gas Treatment Bid Process Equipment														
Process Building (Installation TPU Module)														
TPU Train 1														
13-1035(M63)-2	TPU-1 Welding to Base Plate	20	20	0%	31-May-23	17-Oct-23	17-Jun-23	03-Nov-23	17				31-May-23	19-Jun-23, TPU-1 Welding to Base Plate
13-1040	Boiler Condition Check and Repair	70	70	0%	31-May-23	08-Aug-23	27-Jul-23	04-Oct-23	57				31-May-23	08-Aug-23, Boiler Condition Ch
13-1050	Remaining Equipment Installation at GL	120	120	0%	20-Jun-23	17-Oct-23	07-Jul-23	03-Nov-23	17				20-Jun-23	
TPU Train 2														
13-1125(M63)-2	TPU-2 Welding to Base Plate	20	20	0%	31-May-23	19-Jun-23	17-Jun-23	06-Jul-23	17				31-May-23	19-Jun-23, TPU-2 Welding to Base Plate
13-1130	Boiler Condition Check and Repair	70	70	0%	31-May-23	08-Aug-23	27-Jul-23	04-Oct-23	57				31-May-23	08-Aug-23, Boiler Condition Ch
13-1140	Remaining Equipment Installation at GL	120	120	0%	20-Jun-23	17-Oct-23	07-Jul-23	03-Nov-23	17				20-Jun-23	
TPU Train 3														
13-1210	Delivery, inspection and Transport Boiler Train to Position by SPMT	10	10	0%	28-Jun-23	09-Dec-23	22-Feb-23	09-Dec-23	0				28-Jun-23	07-Jul-23, Delivery, inspection and Transport Boiler Train to Position by SPMT (
13-1215(M63)-1	Removal of Temporary Steel from Prefab from TPU-3	14	14	0%	08-Jul-23	21-Jul-23	13-Mar-23	26-Mar-23	-117				08-Jul-23	21-Jul-23, Removal of Temporary Steel from Prefab from
13-1215(M63)-2	TPU-3 Welding to Base Plate	20	20	0%	22-Jul-23	10-Aug-23	22-Jul-23	10-Aug-23	0				22-Jul-23	10-Aug-23, TPU-3 Welding t
13-1230	Remaining Equipment Installation at GL	121	121	0%	11-Aug-23	09-Dec-23	11-Aug-23	09-Dec-23	0					11-Aug-23
TPU Train 4														
13-1300	Delivery, inspection and Transport Boiler Train to Position by SPMT	10	10	0%	21-Jul-23	30-Jul-23	17-Mar-23	26-Mar-23	-126				21-Jul-23	30-Jul-23, Delivery, inspection and Transport
13-1305(M63)-1	Removal of Temporary Steel from Prefab TPU-4	8	8	0%	31-Jul-23	07-Aug-23	01-Apr-23	08-Apr-23	-121				31-Jul-23	07-Aug-23, Removal of Temporar
13-1305(M63)-2	TPU-4 Welding to Base Plate	20	20	0%	08-Aug-23	27-Aug-23	24-Jul-23	12-Aug-23	-15				08-Aug-23	27-Aug-23, TPU-4 Welding to Base Plate
13-1320	Remaining Equipment Installation at GL	120	120	0%	28-Aug-23	25-Dec-23	13-Aug-23	10-Dec-23	-15					28-Aug-23
TPU Train 5														
13-1390	Delivery, inspection and Transport Boiler Train to Position by SPMT (TPU Train 5)	10	10	0%	08-Sep-23	17-Sep-23	06-May-23	15-May-23	-125	Revised delivery sequence				
13-1395(M63)-1	Removal of Temporary Steel from Prefab from TPU-5	8	8	0%	18-Sep-23	25-Sep-23	31-May-23	07-Jun-23	-110					
13-1395(M63)-2	TPU-5 Welding to Base Plate	20	20	0%	26-Sep-23	15-Oct-23	08-Aug-23	27-Aug-23	-49					
13-1410	Remaining Equipment Installation at GL	120	120	0%	16-Oct-23	12-Feb-24	28-Aug-23	25-Dec-23	-49					
TPU Train 6														
13-1480	Delivery, inspection and Transport Boiler Train to Position by SPMT (TPU Train 6)	10	10	0%	01-Oct-23	10-Oct-23	29-May-23	07-Jun-23	-125	Revised delivery sequence				
13-1485(M63)-1	Removal of Temporary Steel from Prefab from TPU-6	8	8	0%	11-Oct-23	18-Oct-23	13-Jun-23	20-Jun-23	-120					
13-1485(M63)-2	TPU-6 Welding to Base Plate	20	20	0%	19-Oct-23	07-Nov-23	11-Jul-23	30-Jul-23	-100					
13-1490	Boiler Condition Check and Repair	70	70	0%	11-Oct-23	19-Dec-23	05-Aug-23	13-Oct-23	-67					
13-1500	Remaining Equipment Installation at GL	120	120	0%	08-Nov-23	06-Mar-24	31-Jul-23	27-Nov-23	-100					
Process Building (Installation of Flue Gas Module)														
FGC Train 3														
13-1710	Delivery, inspection and Transport Flue Gas Train to Position by Sf	10	10	0%	13-Aug-23	22-Aug-23	09-Apr-23	18-Apr-23	-126					13-Aug-23
FGC Train 4														
13-1780	Delivery, inspection and Transport Flue Gas Train to Position by Sf	10	10	0%	13-Aug-23	22-Aug-23	09-Apr-23	18-Apr-23	-126					13-Aug-23
FGC Train 5														
13-1850	Delivery, inspection and Transport Flue Gas Train to Position by Sf	10	10	0%	24-Oct-23	02-Nov-23	21-Jun-23	30-Jun-23	-125					

3-Month Rolling Programme (May 2023)



Activity ID	Activity Name	Planned Duration	Remaining Duration	Activity % Complete	Current Start	Current Finish	Late Start	Late Finish	Total Float	M66 Remarks	2023			
											May 66	Jun 67	Jul 68	Aug 69
FGC Train 6														
13-1920	Delivery, inspection and Transport Flue Gas Train to Position by Sf	10	10	0%	24-Oct-23	02-Nov-23	21-Jun-23	30-Jun-23	-125					
Turbine Hall Bld Equipment Installation														
Turbine Hall Module 1 Installation														
13-2119(11)	STG Module 1 Delivery	0	0	0%		22-Jul-23		15-Aug-23	24					
13-2120	STG Module 1 Installation	22	22	0%	21-Aug-23	11-Sep-23	16-Aug-23	06-Sep-23	-5					
13-2160(6)	Install Maintenance Girder & Crane at Module 1 @+22.247mPd	30	30	0%	21-Jul-23	19-Aug-23	16-Jul-23	14-Aug-23	-5					
Turbine Hall Module 2 Installation														
13-2169(11)	STG Module 2 Delivery	0	0	0%		18-Dec-23		17-Aug-23	-123					
13-2170	STG Module 2 Installation	21	21	0%	19-Dec-23	08-Jan-24	18-Aug-23	07-Sep-23	-123					
13-2210(6)	Install Maintenance Girder & Crane at Module 2 @+22.247mPd	30	30	0%	17-Dec-23	15-Jan-24	13-Aug-23	11-Sep-23	-126					
Turbine Hall Module 3 Installation														
13-2219(11)	STG Module 3 Delivery	0	0	0%		23-Dec-23		19-Aug-23	-126					
13-2220	STG Module 3 Installation	21	21	0%	24-Dec-23	13-Jan-24	20-Aug-23	09-Sep-23	-126					
13-2260(6)	Install Maintenance Girder & Crane at Module 3 @+22.247mPd	30	30	0%	19-Dec-23	17-Jan-24	15-Aug-23	13-Sep-23	-126					
Landscape, External Road and Drains Works														
Underground Utilities Works														
Underground Utility Systems & Cables														
14-1050	Cable Ducting and Landing Jointing bay for CLP Transmission Sys	90	90	0%	31-May-23	28-Aug-23*	04-Jul-23	01-Oct-23	34					
Drainage Works														
Box Culvert														
East Culvert (3.5m x 2.5m x 118m)														
14-2000	Excavation to Formation	60	60	0%	11-Jun-23	09-Aug-23	22-Jun-23	20-Aug-23	11					
14-2010	Construction of Box Culvert (118m, 1.7m/d)	70	70	0%	15-May-23 A	19-Aug-23	22-Jun-23	30-Aug-23	11					
Earthing System														
16-1900-2(6)	Installation of Ground Earthing Mesh	180	90	50%	28-Apr-22 A	28-Aug-23	09-Mar-24	06-Jun-24	283					

3-Month Rolling Programme (May 2023)

- Remaining Work
- Actual Work
- Critical Remaining Work
- Actual Milestone
- Critical Milestone
- Milestone