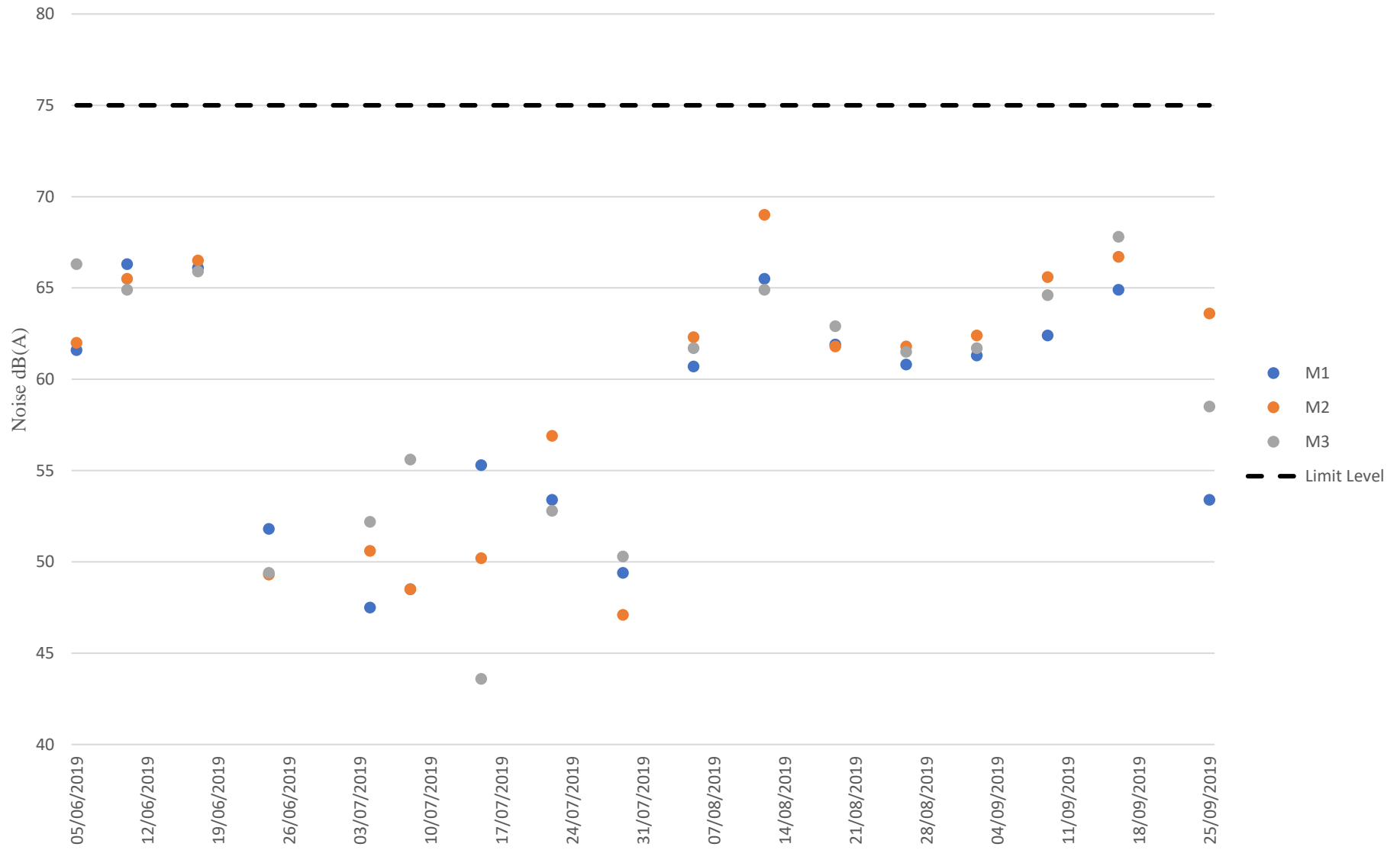
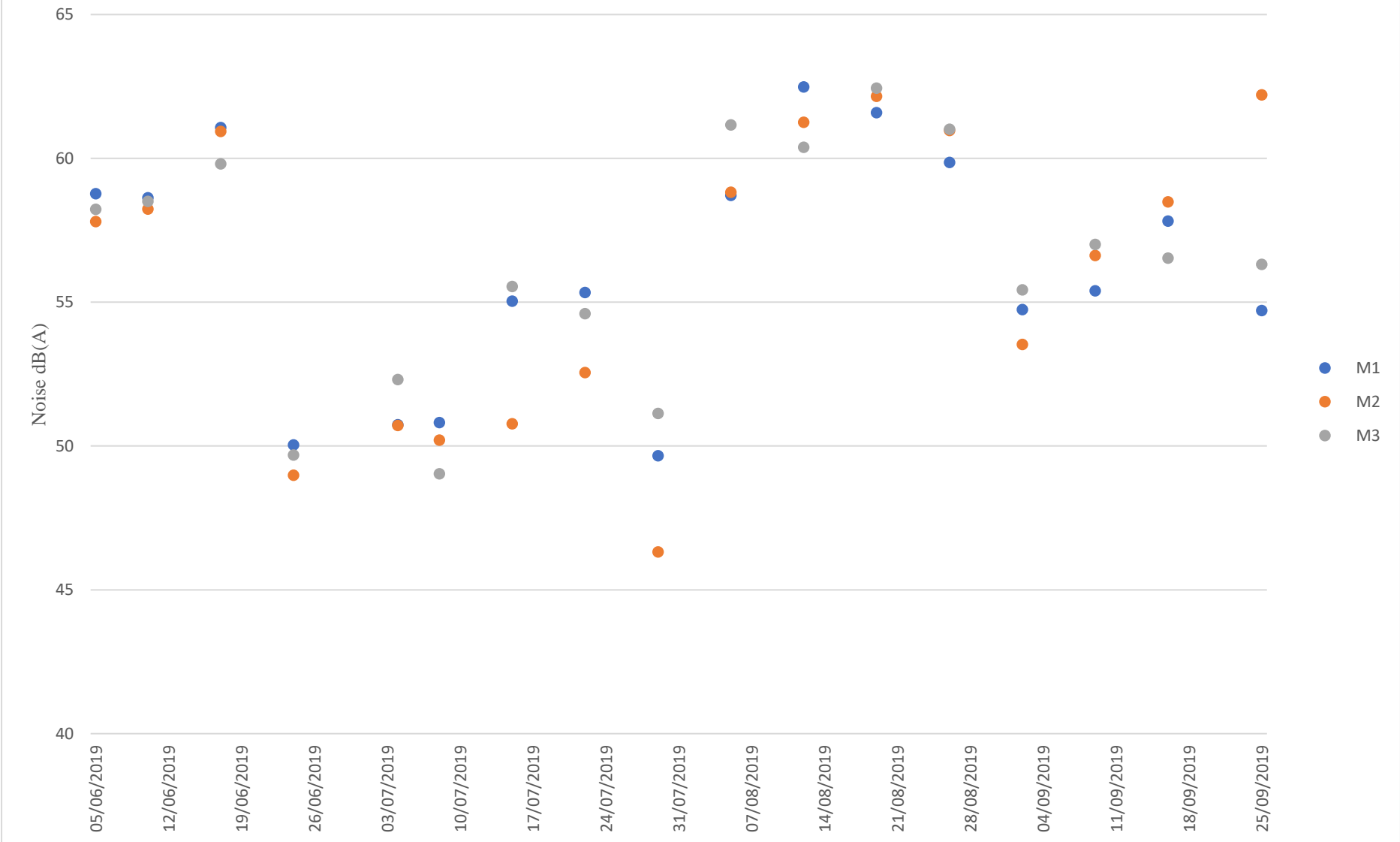


## Appendix D Noise Monitoring Data Trending

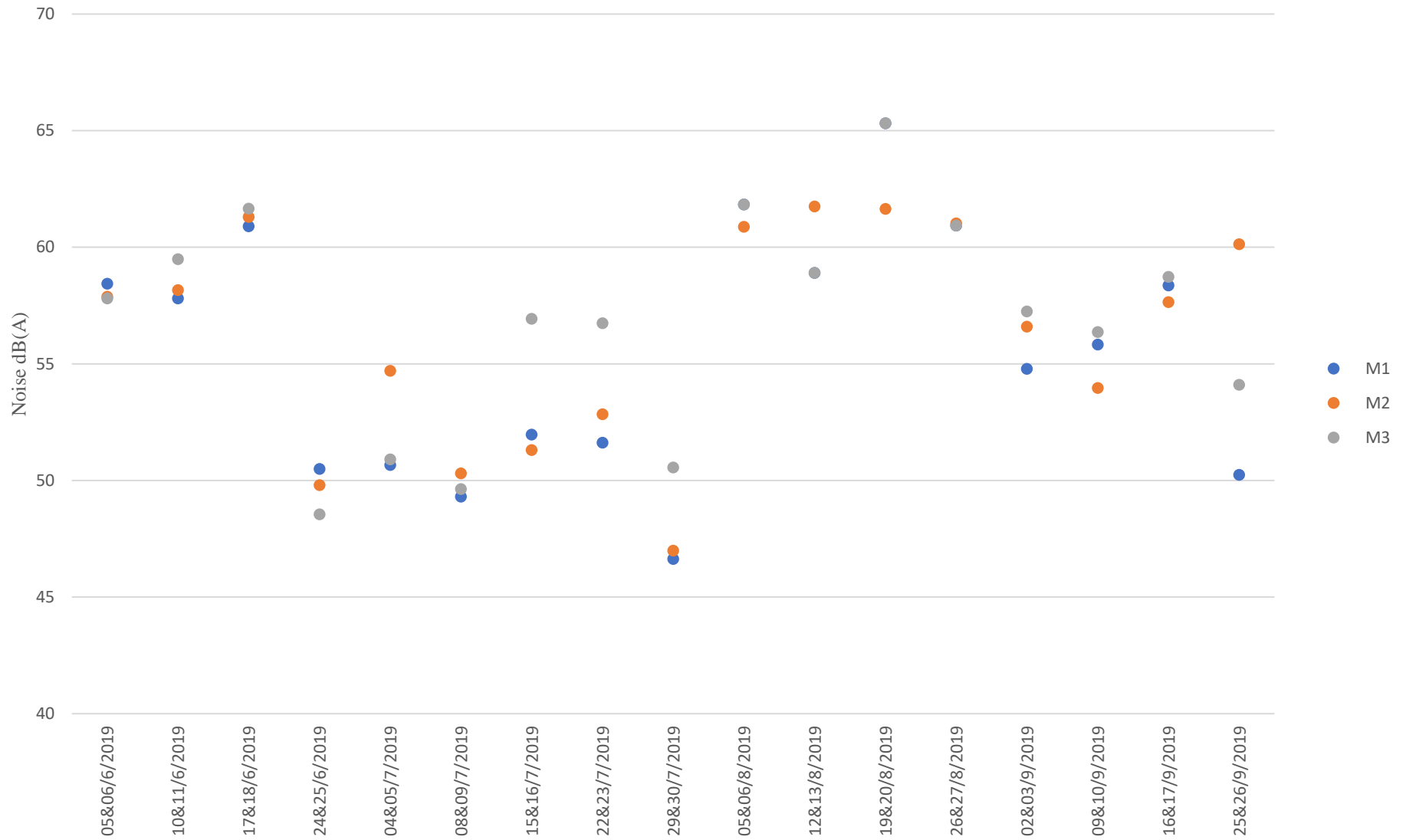
M1, M2, M3 Leq 30min dB(A) during Daytime (0700 - 1900hrs)



M1, M2, M3 Leq 30min dB(A) during Evening Time (1900 - 2300hrs)



M1, M2, M3 Leq 30min dB(A) during Night Time (2300 - 0700hrs)



**Summary of the Construction Activities Undertaken during the Reporting Period**

<b>Location of works</b>	<b>Construction activities undertaken</b>	<b>Remarks on progress</b>
Seawall and breakwater locations	<ul style="list-style-type: none"> <li>• Marine site investigation works</li> <li>• Laying of Geotextile and Sand Blanket</li> </ul>	<ul style="list-style-type: none"> <li>• Completed</li> <li>• On-going for Sand Blanket Laying</li> <li>• On-going for laying geotextiles</li> </ul>
Location of DCM Site Trial	<ul style="list-style-type: none"> <li>• Coring of DCM samples</li> </ul>	<ul style="list-style-type: none"> <li>• Completed</li> </ul>
Seawall Locations	<ul style="list-style-type: none"> <li>• Collecting of Marine Sediment Samples</li> </ul>	<ul style="list-style-type: none"> <li>• Completed</li> </ul>
Location of DCM static Loading Test	<ul style="list-style-type: none"> <li>• DCM installation</li> </ul>	<ul style="list-style-type: none"> <li>• Completed</li> </ul>
Seawall and berth area	<ul style="list-style-type: none"> <li>• Coring of DCM samples</li> <li>• DCM installation</li> <li>• Dredging operation</li> <li>• Rock filling of foundation</li> <li>• Laying of Geotextile and Sand Blanket</li> </ul>	<ul style="list-style-type: none"> <li>• 51 nos. of sample were taken</li> <li>• 6149 out of 6491 DCM injections were completed</li> <li>• 36,040.8842 m<sup>3</sup> of dredged sediment in bulk quantity was dumped at relevant dumping site in total</li> <li>• On-going</li> <li>• Completed for Sand Blanket Laying</li> <li>• On-going for laying geotextiles</li> </ul>
Shek Kwu Chau Southwest Shoreline with Identified Coral Colonies	<ul style="list-style-type: none"> <li>• Installation of floating silt curtain</li> </ul>	<ul style="list-style-type: none"> <li>• On-going</li> </ul>

Location: Shek Kwu Chau Treatment & Rehabilitation Centre Hostel 1 (M1 / N\_S1)

Monitoring date: 4, 8, 15, 22 & 29 July 2019 (Daytime)

4&5, 8&9, 15&16, 22&23, 29&30 July 2019 (Evening & Night time)

Parameter :  $L_{eq\ 30min}$  (Daytime),  $L_{eq\ 5min}$  (Evening & Night time)

Noise source other than Nil  
construction activities from  
the Project:

Noise Monitoring data:

Date	Start time		End time	Weather	$L_{eq\ 30min}$ dB(A) / $L_{eq\ 5min}$ dB(A)	Sound Level Meter Used	Calibrator Used
04 Jul 2019	15:07	-	15:37	Sunny	47.5	SVAN 958A (Serial No. 36691)	NC-74 (No. 34504770)
04 Jul 2019	19:03	-	19:08	Fine	51.9	SVAN 958A (Serial No. 36691)	NC-74 (No. 34504770)
	21:03	-	21:08		49.2		
	22:49	-	22:54		50.7		
	23:39	-	23:44		48		
05 Jul 2019	4:09	-	4:14	Fine	52.6	SVAN 958A (Serial No. 36691)	NC-74 (No. 34504770)
	6:39	-	6:44		50.2		
08 Jul 2019	15:02	-	15:32	Sunny	48.5	SVAN 958A (Serial No. 36691)	NC-74 (No. 34504770)
08 Jul 2019	19:07	-	19:12	Fine	49.2	SVAN 958A (Serial No. 36691)	NC-74 (No. 34504770)
	21:07	-	21:12		50.2		
	22:53	-	22:58		52.4		
	23:43	-	23:48		50.3		
09 Jul 2019	4:13	-	4:18	Fine	48.5	SVAN 958A (Serial No. 36691)	NC-74 (No. 34504770)
	6:43	-	6:48		48.9		
15 Jul 2019	15:12	-	15:42	Sunny	55.3	SVAN 958A (Serial No. 36691)	NC-74 (No. 34504770)
15 Jul 2019	19:04	-	19:09	Fine	54.3	SVAN 958A (Serial No. 36691)	NC-74 (No. 34504770)
	21:04	-	21:09		57.9		
	22:50	-	22:55		48.5		
	23:40	-	23:45		48.1		

<b>Date</b>	<b>Start time</b>		<b>End time</b>	<b>Weather</b>	<b>L<sub>eq 30min</sub> dB(A) / L<sub>eq 5min</sub> dB(A)</b>	<b>Sound Level Meter Used</b>	<b>Calibrator Used</b>
16 Jul 2019	4:10	-	4:15	Fine	49.2	SVAN 958A (Serial No. 36691)	NC-74 (No. 34504770)
	6:40	-	6:45		55.1		
22 Jul 2019	15:15	-	15:45	Sunny	53.4	SVAN 958A (Serial No. 36691)	NC-74 (No. 34504770)
22 Jul 2019	19:08	-	19:13	Fine	54.9	SVAN 958A (Serial No. 36691)	NC-74 (No. 34504770)
	21:08	-	21:13		54.3		
	22:54	-	22:59		56.5		
	23:44	-	23:49		51.1		
23 Jul 2019	4:14	-	4:19	Fine	52.1	SVAN 958A (Serial No. 36691)	NC-74 (No. 34504770)
	6:44	-	6:49		51.6		
29 Jul 2019	15:05	-	15:35	Sunny	49.4	SVAN 958A (Serial No. 36691)	NC-74 (No. 34504770)
29 Jul 2019	19:07	-	19:14	Fine	50.2	SVAN 958A (Serial No. 36691)	NC-74 (No. 34504770)
	21:07	-	21:14		50.8		
	22:53	-	23:00		47.2		
	23:43	-	23:50		47.7		
30 Jul 2019	4:13	-	4:20	Fine	45.4	SVAN 958A (Serial No. 36691)	NC-74 (No. 34504770)
	6:43	-	6:50		46.5		

Location: Shek Kwu Chau Treatment & Rehabilitation Centre Hostel 1 (M1 / N\_S1)

Monitoring date: 5, 12, 19 & 26 August 2019 (Daytime)

5&6, 12&13, 19&20, 26&27 August 2019 (Evening & Night time)

Parameter :  $L_{eq\ 30min}$  (Daytime),  $L_{eq\ 5min}$  (Evening & Night time)

Noise source other than construction activities from the Project: Nil

Noise Monitoring data:

Date	Start time		End time	Weather	$L_{eq\ 30min}$ dB(A) / $L_{eq\ 5min}$ dB(A)	Sound Level Meter Used	Calibrator Used
05 Aug 2019	15:13	-	15:43	Sunny	60.7	SVAN 958A (Serial No. 36691)	NC-74 (No. 34504770)
05 Aug 2019	19:02	-	19:07	Fine	58.9	SVAN 958A (Serial No. 36691)	NC-74 (No. 34504770)
	21:02	-	21:07		58.9		
	22:48	-	22:53		58.3		
	23:38	-	23:43		59.6		
06 Aug 2019	4:02	-	4:07	Fine	60.1	SVAN 958A (Serial No. 36691)	NC-74 (No. 34504770)
	6:38	-	6:43		58.5		
12 Aug 2019	15:12	-	15:42	Sunny	65.5	SVAN 958A (Serial No. 36691)	NC-74 (No. 34504770)
12 Aug 2019	19:02	-	19:07	Fine	62.6	SVAN 958A (Serial No. 36691)	NC-74 (No. 34504770)
	21:02	-	21:07		62.8		
	22:48	-	22:53		62		
	23:38	-	23:43		60.2		
13 Aug 2019	4:02	-	4:07	Fine	61.4	SVAN 958A (Serial No. 36691)	NC-74 (No. 34504770)
	6:38	-	6:43		62.5		
19 Aug 2019	15:08	-	15:38	Sunny	61.9	SVAN 958A (Serial No. 36691)	NC-74 (No. 34504770)
19 Aug 2019	19:02	-	19:07	Fine	61.4	SVAN 958A (Serial No. 36691)	NC-74 (No. 34504770)
	21:02	-	21:07		62.2		
	22:48	-	22:53		61.1		
	23:38	-	23:43		59.4		



<b>Date</b>	<b>Start time</b>		<b>End time</b>	<b>Weather</b>	<b>L<sub>eq 30min</sub> dB(A) / L<sub>eq 5min</sub> dB(A)</b>	<b>Sound Level Meter Used</b>	<b>Calibrator Used</b>
20 Aug 2019	4:02	-	4:07	Fine	61.9	SVAN 958A (Serial No. 36691)	NC-74 (No. 34504770)
	6:38	-	6:43		61		
26 Aug 2019	15:11	-	15:41	Sunny	60.8	SVAN 958A (Serial No. 36691)	NC-74 (No. 34504770)
26 Aug 2019	19:09	-	19:14	Fine	60.7	SVAN 958A (Serial No. 36691)	NC-74 (No. 34504770)
	21:09	-	21:14		58.9		
	22:55	-	23:00		59.8		
	23:45	-	23:50		58.9		
27 Aug 2019	4:09	-	4:14	Fine	58.7	SVAN 958A (Serial No. 36691)	NC-74 (No. 34504770)
	6:45	-	6:50		59.7		

Location: Shek Kwu Chau Treatment & Rehabilitation Centre Hostel 1 (M1 / N\_S1)

Monitoring date: 2, 9, 16, 25 September 2019 (Daytime)  
 2&3, 9&10, 16&17, 25&26 Septmeber 2019 (Evening & Night time)

Parameter :  $L_{eq\ 30min}$  (Daytime),  $L_{eq\ 5min}$  (Evening & Night time)

Noise source other than construction activities from the Project: Nil

Noise Monitoring data:

Date	Start time		End time	Weather	$L_{eq\ 30min}$ dB(A) / $L_{eq\ 5min}$ dB(A)	Sound Level Meter Used	Calibrator Used
2 Sep 2019	15:10	-	15:35	Sunny	61.3	XL2 (Serial No. A2A-13548-E0)	SV33B (No. 83042)
2 Sep 2019	19:02	-	19:07	Fine	54.4	XL2 (Serial No. A2A-13548-E0)	SV33B (No. 83042)
	21:02	-	21:07		55.9		
	22:48	-	22:53		53.6		
	23:38	-	23:43		53.9		
3 Sep 2019	04:02	-	04:07	Fine	54.7	XL2 (Serial No. A2A-13548-E0)	SV33B (No. 83042)
	06:38	-	06:43		55.6		
9 Sep 2019	15:13	-	15:33	Sunny	62.4	XL2 (Serial No. A2A-13548-E0)	SV33B (No. 83042)
9 Sep 2019	19:05	-	19:10	Fine	54.7	XL2 (Serial No. A2A-13548-E0)	SV33B (No. 83042)
	21:05	-	21:10		55.6		
	22:51	-	22:56		55.8		
	23:41	-	23:46		56.4		
10 Sep 2019	04:05	-	04:10	Fine	55.7	XL2 (Serial No. A2A-13548-E0)	SV33B (No. 83042)
	06:41	-	06:46		55.3		
16 Sep 2019	15:08	-	15:38	Sunny	64.9	XL2 (Serial No. A2A-13548-E0)	SV33B (No. 83042)
16 Sep 2019	19:07	-	19:12	Fine	57.1	XL2 (Serial No. A2A-13548-E0)	SV33B (No. 83042)
	21:07	-	21:12		58.9		
	22:53	-	22:58		57.2		
	23:43	-	23:48		59.8		
17 Sep 2019	04:02	-	04:07	Fine	57.0	XL2 (Serial No. A2A-13548-E0)	SV33B (No. 83042)
	06:43	-	06:48		57.8		
25 Sep 2019	16:12	-	16:32	Sunny	53.4	XL2 (Serial No. A2A-13548-E0)	SV33B (No. 83042)

<b>Date</b>	<b>Start time</b>		<b>End time</b>	<b>Weather</b>	<b>L<sub>eq 30min</sub> dB(A) / L<sub>eq 5min</sub> dB(A)</b>	<b>Sound Level Meter Used</b>	<b>Calibrator Used</b>
25 Sep 2019	19:12	-	19:17	Fine	56.8	XL2 (Serial No. A2A-13548-E0)	SV33B (No. 83042)
	21:12	-	21:17		53.7		
	22:42	-	22:47		52.4		
26 Sep 2019	00:12	-	00:17	Fine	50.5	XL2 (Serial No. A2A-13548-E0)	SV33B (No. 83042)
	01:42	-	01:47		50.3		
	03:12	-	03:17		49.9		

Location: Shek Kwu Chau Treatment & Rehabilitation Centre Hostel 2 (M2 / N\_S2)

Monitoring date: 4, 8, 15, 22 & 29 July 2019 (Daytime)  
 4&5, 8&9, 15&16, 22&23, 29&30 July 2019 (Evening & Night time)

Parameter :  $L_{eq\ 30min}$  (Daytime),  $L_{eq\ 5min}$  (Evening & Night time)

Noise source other than construction activities from the Project: Nil

Noise Monitoring data:

Date	Start time		End time	Weather	$L_{eq\ 30min}$ dB(A) / $L_{eq\ 5min}$ dB(A)	Sound Level Meter Used	Calibrator Used
04 Jul 2019	15:12	-	15:42	Sunny	50.6	XL2 (Serial No. A2A-13661-E0)	NC-74 (No. 34504770)
04 Jul 2019	19:04	-	19:09	Fine	51.2	XL2 (Serial No. A2A-13661-E0)	NC-74 (No. 34504770)
	21:04	-	21:09		50.4		
	22:50	-	22:55		50.5		
	23:40	-	23:45		48.2		
05 Jul 2019	4:10	-	4:15	Fine	57.2	XL2 (Serial No. A2A-13661-E0)	NC-74 (No. 34504770)
	6:40	-	6:45		54.7		
08 Jul 2019	15:09	-	15:39	Sunny	48.5	XL2 (Serial No. A2A-13661-E0)	NC-74 (No. 34504770)
08 Jul 2019	19:03	-	19:08	Fine	49.9	XL2 (Serial No. A2A-13661-E0)	NC-74 (No. 34504770)
	21:03	-	21:08		50.3		
	22:49	-	22:54		50.4		
	23:39	-	23:44		50.6		
09 Jul 2019	4:09	-	4:14	Fine	50.3	XL2 (Serial No. A2A-13661-E0)	NC-74 (No. 34504770)
	6:39	-	6:44		50.0		
15 Jul 2019	15:07	-	15:37	Sunny	50.2	XL2 (Serial No. A2A-13661-E0)	NC-74 (No. 34504770)
15 Jul 2019	19:06	-	19:11	Fine	50.6	XL2 (Serial No. A2A-13661-E0)	NC-74 (No. 34504770)
	21:06	-	21:11		51.0		
	22:52	-	22:57		50.7		
	23:42	-	23:47		51.5		
16 Jul 2019	4:12	-	4:17	Fine	51.1	XL2 (Serial No. A2A-13661-E0)	NC-74 (No. 34504770)
	6:42	-	6:47		51.3		
22 Jul 2019	15:02	-	15:32	Sunny	56.9	XL2 (Serial No. A2A-13661-E0)	NC-74 (No. 34504770)

<b>Date</b>	<b>Start time</b>		<b>End time</b>	<b>Weather</b>	<b>L<sub>eq 30min</sub> dB(A) / L<sub>eq 5min</sub> dB(A)</b>	<b>Sound Level Meter Used</b>	<b>Calibrator Used</b>
22 Jul 2019	19:08	-	19:13	Fine	51.5	XL2 (Serial No. A2A-13661-E0)	NC-74 (No. 34504770)
	21:08	-	21:13		52.3		
	22:54	-	22:59		53.6		
	23:44	-	23:49		53.2		
23 Jul 2019	4:14	-	4:19	Fine	52.5	XL2 (Serial No. A2A-13661-E0)	NC-74 (No. 34504770)
	6:44	-	6:49		52.8		
29 Jul 2019	15:07	-	15:37	Sunny	47.1	XL2 (Serial No. A2A-13661-E0)	NC-74 (No. 34504770)
29 Jul 2019	19:03	-	19:08	Fine	46.5	XL2 (Serial No. A2A-13661-E0)	NC-74 (No. 34504770)
	21:03	-	21:08		46.6		
	22:49	-	22:54		45.8		
	23:39	-	23:44		48.1		
30 Jul 2019	4:09	-	4:14	Fine	46.2	XL2 (Serial No. A2A-13661-E0)	NC-74 (No. 34504770)
	6:39	-	6:44		46.4		

Location: Shek Kwu Chau Treatment & Rehabilitation Centre Hostel 2 (M2 / N\_S2)

Monitoring date: 5, 12, 19, 26 August 2019 (Daytime)

5&6, 12&13, 19&20, 26&27 August 2019 (Evening & Night time)

Parameter :  $L_{eq\ 30min}$  (Daytime),  $L_{eq\ 5min}$  (Evening & Night time)

Noise source other than Nil  
construction activities from  
the Project:

Noise Monitoring data:

Date	Start time		End time	Weather	$L_{eq\ 30min}$ dB(A) / $L_{eq\ 5min}$ dB(A)	Sound Level Meter Used	Calibrator Used
05 Aug 2019	15:12	-	15:42	Sunny	62.3	XL2 (Serial No. A2A-13661-E0)	NC-74 (No. 34504770)
05 Aug 2019	19:09	-	19:14	Fine	58.6	XL2 (Serial No. A2A-13661-E0)	NC-74 (No. 34504770)
	21:09	-	21:14		59.4		
	22:55	-	23:00		58.4		
	23:45	-	23:50		58.8		
06 Aug 2019	4:09	-	4:14	Fine	63.1	XL2 (Serial No. A2A-13661-E0)	NC-74 (No. 34504770)
	6:45	-	6:50		59.4		
12 Aug 2019	15:13	-	15:43	Sunny	69	XL2 (Serial No. A2A-13661-E0)	NC-74 (No. 34504770)
12 Aug 2019	19:08	-	19:13	Fine	60.7	XL2 (Serial No. A2A-13661-E0)	NC-74 (No. 34504770)
	21:08	-	21:13		61.4		
	22:54	-	22:59		61.6		
	23:44	-	23:49		61.4		
13 Aug 2019	4:08	-	4:13	Fine	61.6	XL2 (Serial No. A2A-13661-E0)	NC-74 (No. 34504770)
	6:44	-	6:49		62.2		
19 Aug 2019	15:09	-	15:39	Sunny	61.8	XL2 (Serial No. A2A-13661-E0)	NC-74 (No. 34504770)
19 Aug 2019	19:06	-	19:11	Fine	60.9	XL2 (Serial No. A2A-13661-E0)	NC-74 (No. 34504770)
	21:06	-	21:11		62.2		
	22:52	-	22:57		63.1		
	23:42	-	23:47		62.9		
20 Aug 2019	4:06	-	4:11	Fine	61.4	XL2 (Serial No. A2A-13661-E0)	NC-74 (No. 34504770)
	6:42	-	6:47		60.2		
26 Aug 2019	15:06	-	15:36	Sunny	61.8	XL2 (Serial No. A2A-13661-E0)	NC-74 (No. 34504770)

<b>Date</b>	<b>Start time</b>		<b>End time</b>	<b>Weather</b>	<b>L<sub>eq 30min</sub> dB(A) / L<sub>eq 5min</sub> dB(A)</b>	<b>Sound Level Meter Used</b>	<b>Calibrator Used</b>
26 Aug 2019	19:09	-	19:14	Fine	60.8	XL2 (Serial No. A2A-13661-E0)	NC-74 (No. 34504770)
	21:09	-	21:14		61.2		
	22:55	-	23:00		60.9		
	23:45	-	23:50		61.7		
27 Aug 2019	4:09	-	4:14	Fine	60	XL2 (Serial No. A2A-13661-E0)	NC-74 (No. 34504770)
	6:45	-	6:50		61.2		

Location: Shek Kwu Chau Treatment & Rehabilitation Centre Hostel 2 (M2 / N\_S2)

Monitoring date: 2, 9, 16, 25 September 2019 (Daytime)  
 2&3, 9&10, 16&17, 25&26 September 2019 (Evening & Night time)

Parameter :  $L_{eq\ 30min}$  (Daytime),  $L_{eq\ 5min}$  (Evening & Night time)

Noise source other than construction activities from the Project: Nil

Noise Monitoring data:

Date	Start time		End time	Weather	$L_{eq\ 30min}$ dB(A) / $L_{eq\ 5min}$ dB(A)	Sound Level Meter Used	Calibrator Used
2 Sep 2019	15:13	-	15:33	Sunny	62.4	XL2 (Serial No. A2A-13661-E0)	SV33B (No. 83042)
2 Sep 2019	19:04	-	19:09	Fine	53.3	XL2 (Serial No. A2A-13661-E0)	SV33B (No. 83042)
	21:04	-	21:09		54.2		
	22:50	-	22:55		53.0		
	23:40	-	23:45		54.9		
3 Sep 2019	04:04	-	04:09	Fine	57.8	XL2 (Serial No. A2A-13661-E0)	SV33B (No. 83042)
	06:40	-	06:45		56.6		
9 Sep 2019	15:15	-	15:35	Sunny	65.6	XL2 (Serial No. A2A-13661-E0)	SV33B (No. 83042)
9 Sep 2019	19:02	-	19:07	Fine	57.4	XL2 (Serial No. A2A-13661-E0)	SV33B (No. 83042)
	21:02	-	21:07		55.0		
	22:48	-	22:53		57.1		
	23:38	-	23:43		54.9		
10 Sep 2019	04:02	-	04:07	Fine	53.6	XL2 (Serial No. A2A-13661-E0)	SV33B (No. 83042)
	06:38	-	06:43		53.2		
16 Sep 2019	15:11	-	15:31	Sunny	66.7	XL2 (Serial No. A2A-13663-E0)	SV33B (No. 83042)
16 Sep 2019	19:06	-	19:11	Fine	60.0	XL2 (Serial No. A2A-13663-E0)	SV33B (No. 83042)
	21:06	-	21:11		58.2		
	22:52	-	22:57		56.6		
	23:42	-	23:47		56.2		
17 Sep 2019	04:06	-	04:11	Fine	57.8	XL2 (Serial No. A2A-13663-E0)	SV33B (No. 83042)
	06:42	-	06:47		58.6		
25 Sep 2019	16:11	-	16:31	Sunny	63.6	XL2 (Serial No. A2A-13663-E0)	SV33B (No. 83042)



<b>Date</b>	<b>Start time</b>		<b>End time</b>	<b>Weather</b>	<b>L<sub>eq 30min</sub> dB(A) / L<sub>eq 5min</sub> dB(A)</b>	<b>Sound Level Meter Used</b>	<b>Calibrator Used</b>
25 Sep 2019	19:11	-	19:16	Fine	62.8	XL2 (Serial No. A2A-13663-E0)	SV33B (No. 83042)
	21:11	-	21:16		62.8		
	22:41	-	22:46		60.7		
26 Sep 2019	00:11	-	00:16	Fine	60.3	XL2 (Serial No. A2A-13663-E0)	SV33B (No. 83042)
	01:41	-	01:46		60.1		
	01:46	-	01:51		60.0		

Location: Shek Kwu Chau Treatment & Rehabilitation Centre Hostel 3 (M3 / N\_S3)

Monitoring date: 4, 8, 15, 22 & 29 July 2019 (Daytime)

4&5, 8&9, 15&16, 22&23, 29&30 July 2019 (Evening & Night time)

Parameter :  $L_{eq\ 30min}$  (Daytime),  $L_{eq\ 5min}$  (Evening & Night time)

Noise source other than construction activities from the Project: Air-conditioning units nearby

Noise Monitoring data:

Date	Start time		End time	Weather	$L_{eq\ 30min}$ dB(A) / $L_{eq\ 5min}$ dB(A)	Sound Level Meter Used	Calibrator Used
04 Jul 2019	15:06	-	15:36	Sunny	52.2	XL2 (Serial No. A2A-13548-E0)	NC-74 (No. 34504770)
04 Jul 2019	19:08	-	19:13	Fine	50.4	XL2 (Serial No. A2A-13548-E0)	NC-74 (No. 34504770)
	21:08	-	21:13		54.3		
	22:54	-	22:59		51.2		
	23:44	-	23:49		49.2		
05 Jul 2019	4:14	-	4:19	Fine	52.6	XL2 (Serial No. A2A-13548-E0)	NC-74 (No. 34504770)
	6:44	-	6:49		50.2		
08 Jul 2019	15:06	-	15:36	Sunny	55.6	XL2 (Serial No. A2A-13548-E0)	NC-74 (No. 34504770)
08 Jul 2019	19:08	-	19:13	Fine	49.2	XL2 (Serial No. A2A-13548-E0)	NC-74 (No. 34504770)
	21:08	-	21:13		48.9		
	22:54	-	22:59		49		
	23:44	-	23:49		49.2		
09 Jul 2019	4:14	-	4:19	Fine	49.3	XL2 (Serial No. A2A-13548-E0)	NC-74 (No. 34504770)
	6:44	-	6:49		50.3		
15 Jul 2019	15:07	-	15:37	Sunny	43.6	XL2 (Serial No. A2A-13548-E0)	NC-74 (No. 34504770)
15 Jul 2019	19:04	-	19:09	Fine	56.1	XL2 (Serial No. A2A-13548-E0)	NC-74 (No. 34504770)
	21:04	-	21:09		54.6		
	22:50	-	22:55		55.8		
	23:40	-	23:45		56.2		
16 Jul 2019	4:10	-	4:15	Fine	57.4	XL2 (Serial No. A2A-13548-E0)	NC-74 (No. 34504770)
	6:40	-	6:45		57.1		

<b>Date</b>	<b>Start time</b>		<b>End time</b>	<b>Weather</b>	<b>L<sub>eq 30min</sub> dB(A) / L<sub>eq 5min</sub> dB(A)</b>	<b>Sound Level Meter Used</b>	<b>Calibrator Used</b>
22 Jul 2019	15:12	-	15:32	Sunny	52.8	XL2 (Serial No. A2A-13548-E0)	NC-74 (No. 34504770)
22 Jul 2019	19:07	-	19:12	Fine	54.6	XL2 (Serial No. A2A-13548-E0)	NC-74 (No. 34504770)
	21:07	-	21:12		54.5		
	22:53	-	22:58		54.7		
	23:43	-	23:48		57.5		
23 Jul 2019	4:13	-	4:18	Fine	56.2	XL2 (Serial No. A2A-13548-E0)	NC-74 (No. 34504770)
	6:43	-	6:48		56.4		
29 Jul 2019	15:12	-	15:12	Sunny	50.3	XL2 (Serial No. A2A-13548-E0)	NC-74 (No. 34504770)
29 Jul 2019	19:07	-	19:12	Fine	51.2	XL2 (Serial No. A2A-13548-E0)	NC-74 (No. 34504770)
	21:07	-	21:12		51		
	22:53	-	22:58		51.2		
	23:43	-	23:48		51.1		
30 Jul 2019	4:13	-	4:18	Fine	50.3	XL2 (Serial No. A2A-13548-E0)	NC-74 (No. 34504770)
	6:43	-	6:48		50.2		

Location: Shek Kwu Chau Treatment & Rehabilitation Centre Hostel 3 (M3 / N\_S3)

Monitoring date: 5, 12, 19 and 26 August 2019 (Daytime)

5&6, 12&13, 19&20, 26&27 August 2019 (Evening & Night time)

Parameter :  $L_{eq\ 30min}$  (Daytime),  $L_{eq\ 5min}$  (Evening & Night time)

Noise source other than construction activities from the Project: Air-conditioning units nearby

Noise Monitoring data:

Date	Start time		End time	Weather	$L_{eq\ 30min}$ dB(A) / $L_{eq\ 5min}$ dB(A)	Sound Level Meter Used	Calibrator Used
05 Aug 2019	15:09	-	15:39	Sunny	61.7	XL2 (Serial No. A2A-13548-E0)	NC-74 (No. 34504770)
05 Aug 2019	19:04	-	19:09	Fine	58.9	XL2 (Serial No. A2A-13548-E0)	NC-74 (No. 34504770)
	21:04	-	21:09		61.6		
	22:50	-	22:55		62.3		
	23:40	-	23:45		62		
06 Aug 2019	4:04	-	4:09	Fine	61.9	XL2 (Serial No. A2A-13548-E0)	NC-74 (No. 34504770)
	6:40	-	6:45		61.6		
12 Aug 2019	15:11	-	15:41	Sunny	64.9	XL2 (Serial No. A2A-13548-E0)	NC-74 (No. 34504770)
12 Aug 2019	19:05	-	19:10	Fine	61.1	XL2 (Serial No. A2A-13548-E0)	NC-74 (No. 34504770)
	21:05	-	21:10		60.7		
	22:51	-	22:56		59.1		
	23:41	-	23:46		58.8		
13 Aug 2019	4:05	-	4:10	Fine	58.2	XL2 (Serial No. A2A-13548-E0)	NC-74 (No. 34504770)
	6:41	-	6:46		59.6		
19 Aug 2019	15:15	-	15:45	Sunny	62.9	XL2 (Serial No. A2A-13548-E0)	NC-74 (No. 34504770)
19 Aug 2019	19:03	-	19:08	Fine	62.7	XL2 (Serial No. A2A-13548-E0)	NC-74 (No. 34504770)
	21:03	-	21:08		62.4		
	22:49	-	22:54		62.2		
	23:39	-	23:44		65.6		
20 Aug 2019	4:03	-	4:08	Fine	64	XL2 (Serial No. A2A-13548-E0)	NC-74 (No. 34504770)
	6:39	-	6:44		66.1		

<b>Date</b>	<b>Start time</b>		<b>End time</b>	<b>Weather</b>	<b><math>L_{eq\ 30min\ dB(A)}</math> / <math>L_{eq\ 5min\ dB(A)}</math></b>	<b>Sound Level Meter Used</b>	<b>Calibrator Used</b>
26 Aug 2019	15:16	-	15:46	Sunny	61.5	XL2 (Serial No. A2A-13548-E0)	NC-74 (No. 34504770)
26 Aug 2019	19:05	-	19:10	Fine	59.8	XL2 (Serial No. A2A-13548-E0)	NC-74 (No. 34504770)
	21:05	-	21:10		61.8		
	22:51	-	22:56		61.2		
	23:41	-	23:46		61.3		
27 Aug 2019	4:05	-	4:10	Fine	60.2	XL2 (Serial No. A2A-13548-E0)	NC-74 (No. 34504770)
	6:41	-	6:46		61.2		

Location: Shek Kwu Chau Treatment & Rehabilitation Centre Hostel 3 (M3 / N\_S3)

Monitoring date: 2, 9, 16, 25 September 2019 (Daytime)  
2&3, 9&10, 16&17, 25&26 September 2019 (Evening & Night time)

Parameter :  $L_{eq\ 30min}$  (Daytime),  $L_{eq\ 5min}$  (Evening & Night time)

Noise source other than construction activities from the Project: Air-conditioning units nearby, dog barking

## Noise Monitoring data:

Date	Start time		End time	Weather	$L_{eq\ 30min}$ dB(A) / $L_{eq\ 5min}$ dB(A)	Sound Level Meter Used	Calibrator Used
2 Sep 2019	15:12	-	15:32	Sunny	61.7	SVAN 971 (Serial No. 77731)	SV33B (No. 83042)
2 Sep 2019	19:08	-	19:13	Fine	56.6	SVAN 971 (Serial No. 77731)	SV33B (No. 83042)
	21:08	-	21:13		55.8		
	22:54	-	22:59		53.2		
	23:44	-	23:49		57.4		
3 Sep 2019	04:08	-	04:13	Fine	57.6	SVAN 971 (Serial No. 77731)	SV33B (No. 83042)
	06:44	-	06:49		56.7		
9 Sep 2019	15:11	-	15:31	Sunny	64.6	SVAN 971 (Serial No. 77731)	SV33B (No. 83042)
9 Sep 2019	19:09	-	19:14	Fine	57.7	SVAN 971 (Serial No. 77731)	SV33B (No. 83042)
	21:09	-	21:14		57.8		
	22:55	-	23:00		55.0		
	23:45	-	23:50		55.6		
10 Sep 2019	04:09	-	04:14	Fine	56.7	SVAN 971 (Serial No. 77731)	SV33B (No. 83042)
	06:45	-	06:50		56.7		
16 Sep 2019	15:09	-	15:39	Sunny	67.8	SVAN 971 (Serial No. 77731)	SV33B (No. 83042)
16 Sep 2019	19:08	-	19:13	Fine	57.2	SVAN 971 (Serial No. 77731)	SV33B (No. 83042)
	21:08	-	21:13		56.1		
	22:54	-	22:59		56.2		
	23:44	-	23:49		58.6		
17 Sep 2019	04:08	-	04:13	Fine	58.7	SVAN 971 (Serial No. 77731)	SV33B (No. 83042)
	06:44	-	06:49		58.9		
25 Sep 2019	16:09	-	16:39	Sunny	58.5	SVAN 971 (Serial No. 77731)	SV33B (No. 83042)

<b>Date</b>	<b>Start time</b>		<b>End time</b>	<b>Weather</b>	<b>L<sub>eq 30min</sub> dB(A) / L<sub>eq 5min</sub> dB(A)</b>	<b>Sound Level Meter Used</b>	<b>Calibrator Used</b>
25 Sep 2019	19:09	-	19:14	Fine	56.6	SVAN 971 (Serial No. 77731)	SV33B (No. 83042)
	21:09	-	21:14		55.9		
	22:39	-	22:44		56.4		
26 Sep 2019	00:09	-	00:14	Fine	54.8	SVAN 971 (Serial No. 77731)	SV33B (No. 83042)
	01:39	-	01:44		53.7		
	03:09	-	03:14		53.7		