

Appendix J Noise Monitoring Data

Location: Shek Kwu Chau Treatment & Rehabilitation Centre Hostel 1 (M1 / N_S1)

Monitoring date: 6, 11, 21, 25 April 2022 (Daytime)

6&7, 11&12, 21&22, 25&26 April 2022 (Evening & Night time)

Parameter : $L_{eq\ 30min}$ (Daytime), $L_{eq\ 5min}$ (Evening & Night time)

Noise source other than construction activities from the Project: Nil

Noise Monitoring Data:

Date	Start time		End time	Weather	$L_{eq\ 30min}$ dB(A) / $L_{eq\ 5min}$ dB(A)	Sound Level Meter Used	Calibrator Used
6 Apr 2022	14:08	-	14:38	Sunny	64.6	SVAN 971 (Serial No. 96062)	Casella CEL-120-1 (No.5007536)
6 Apr 2022	19:08	-	19:13	Fine	52.9	SVAN 971 (Serial No. 96062)	Casella CEL-120-1 (No.5007536)
	20:28	-	20:33		47.5		
	21:08	-	21:13		49.1		
7 Apr 2022	1:08	-	1:13	Fine	45.8	SVAN 971 (Serial No. 96062)	Casella CEL-120-1 (No.5007536)
	3:03	-	3:08		50.3		
	5:13	-	5:18		51.9		
11 Apr 2022	13:51	-	14:21	Sunny	60.1	SVAN 971 (Serial No. 96063)	Casella CEL-120-1 (No.5007536)
11 Apr 2022	19:06	-	19:11	Fine	53.3	SVAN 971 (Serial No. 96063)	Casella CEL-120-1 (No.5007536)
	20:16	-	20:21		55.9		
	21:06	-	21:11		49.0		
12 Apr 2022	1:11	-	1:16	Fine	54.3	SVAN 971 (Serial No. 96063)	Casella CEL-120-1 (No.5007536)
	3:31	-	3:36		50.9		
	5:11	-	5:16		49.3		
21 Apr 2022	14:34	-	15:04	Sunny	62.8	SVAN 971 (Serial No. 96063)	Casella CEL-120-1 (No.5007536)
21 Apr 2022	19:04	-	19:09	Fine	54.3	SVAN 971 (Serial No. 96063)	Casella CEL-120-1 (No.5007536)
	20:09	-	20:14		53.9		
	21:04	-	21:09		46.0		
22 Apr 2022	1:09	-	1:14	Fine	49.9	SVAN 971 (Serial No. 96063)	Casella CEL-120-1 (No.5007536)
	3:09	-	3:14		51.1		
	5:04	-	5:09		53.4		
25 Apr 2022	13:11	-	13:41	Fine	62.8	SVAN 971 (Serial No. 96062)	Rion NC74 (No. 34504770)
25 Apr 2022	19:01	-	19:06	Fine	55.4	SVAN 971 (Serial No. 96062)	Rion NC74 (No. 34504770)
	20:01	-	20:06		55.4		
	21:11	-	21:16		53.0		
26 Apr 2022	1:06	-	1:11	Fine	52.9	SVAN 971 (Serial No. 96062)	Rion NC74 (No. 34504770)
	3:06	-	3:11		52.0		
	5:06	-	5:11		52.1		

Location: Shek Kwu Chau Treatment & Rehabilitation Centre Hostel 2 (M2 / N_S2)

Monitoring date: 6, 11, 21, 25 April 2022 (Daytime)
 6&7, 11&12, 21&22, 25&26 April 2022 (Evening & Night time)

Parameter : $L_{eq\ 30min}$ (Daytime), $L_{eq\ 5min}$ (Evening & Night time)

Noise source other than construction activities from the Project: Nil

Noise Monitoring Data:

Date	Start time		End time	Weather	$L_{eq\ 30min}$ dB(A) / $L_{eq\ 5min}$ dB(A)	Sound Level Meter Used	Calibrator Used
6 Apr 2022	14:15	-	14:45	Sunny	58.0	SVAN 971 (Serial No. 103449)	Casella CEL-120-1 (No.5007536)
6 Apr 2022	19:05	-	19:10	Fine	50.0	SVAN 971 (Serial No. 103449)	Casella CEL-120-1 (No.5007536)
	20:25	-	20:30		49.7		
	21:05	-	21:10		47.9		
7 Apr 2022	1:05	-	1:10	Fine	48.0	SVAN 971 (Serial No. 103449)	Casella CEL-120-1 (No.5007536)
	3:05	-	3:10		47.8		
	5:10	-	5:15		48.6		
11 Apr 2022	14:05	-	14:35	Sunny	59.3	SVAN 971 (Serial No. 96062)	Casella CEL-120-1 (No.5007536)
11 Apr 2022	19:05	-	19:10	Fine	51.8	SVAN 971 (Serial No. 96062)	Casella CEL-120-1 (No.5007536)
	20:15	-	20:20		53.0		
	21:05	-	21:10		50.6		
12 Apr 2022	1:10	-	1:15	Fine	49.6	SVAN 971 (Serial No. 96062)	Casella CEL-120-1 (No.5007536)
	3:30	-	3:35		45.6		
	5:10	-	5:15		46.3		
21 Apr 2022	14:37	-	15:07	Sunny	57.7	SVAN 971 (Serial No. 96062)	Casella CEL-120-1 (No.5007536)
21 Apr 2022	19:02	-	19:07	Fine	52.0	SVAN 971 (Serial No. 96062)	Casella CEL-120-1 (No.5007536)
	20:07	-	20:12		53.9		
	21:02	-	21:07		48.7		
22 Apr 2022	1:07	-	1:12	Fine	49.3	SVAN 971 (Serial No. 96062)	Casella CEL-120-1 (No.5007536)
	3:02	-	3:07		48.5		
	5:02	-	5:07		48.9		
25 Apr 2022	13:24	-	13:54	Fine	57.2	SVAN 971 (Serial No. 103449)	Rion NC74 (No. 34504770)
25 Apr 2022	19:04	-	19:09	Fine	53.6	SVAN 971 (Serial No. 103449)	Rion NC74 (No. 34504770)
	20:19	-	20:24		56.4		
	21:09	-	21:14		57.0		
26 Apr 2022	1:04	-	1:09	Fine	50.1	SVAN 971 (Serial No. 103449)	Rion NC74 (No. 34504770)
	3:04	-	3:09		49.5		
	5:04	-	5:09		50.0		

Location: Shek Kwu Chau Treatment & Rehabilitation Centre Hostel 3 (M3 / N_S3)

Monitoring date: 6, 11, 21, 25 April 2022 (Daytime)

6&7, 11&12, 21&22, 25&26 April 2022 (Evening & Night time)

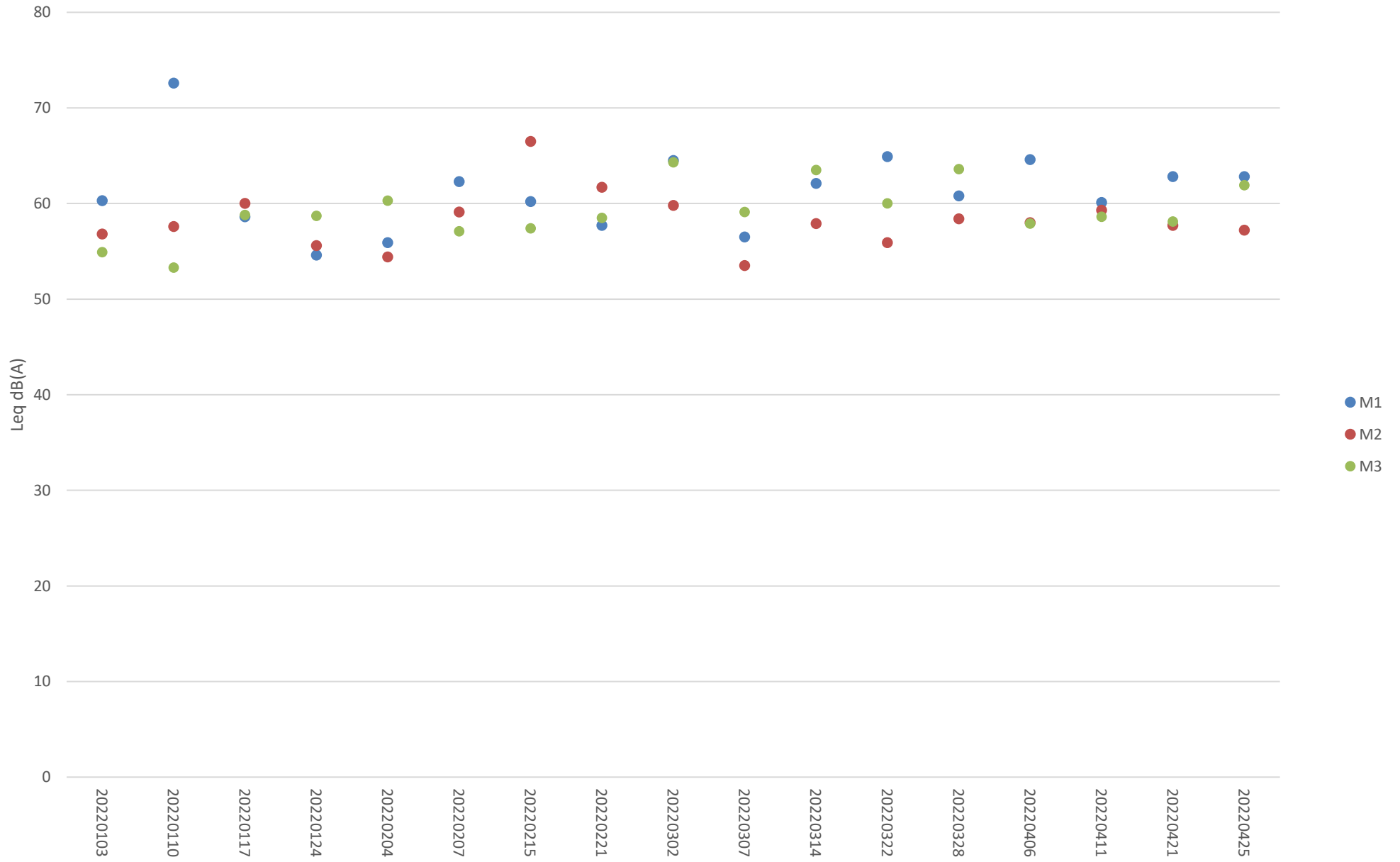
Parameter : $L_{eq\ 30min}$ (Daytime), $L_{eq\ 5min}$ (Evening & Night time)

Noise source other than construction activities from the Project: Air-conditioner

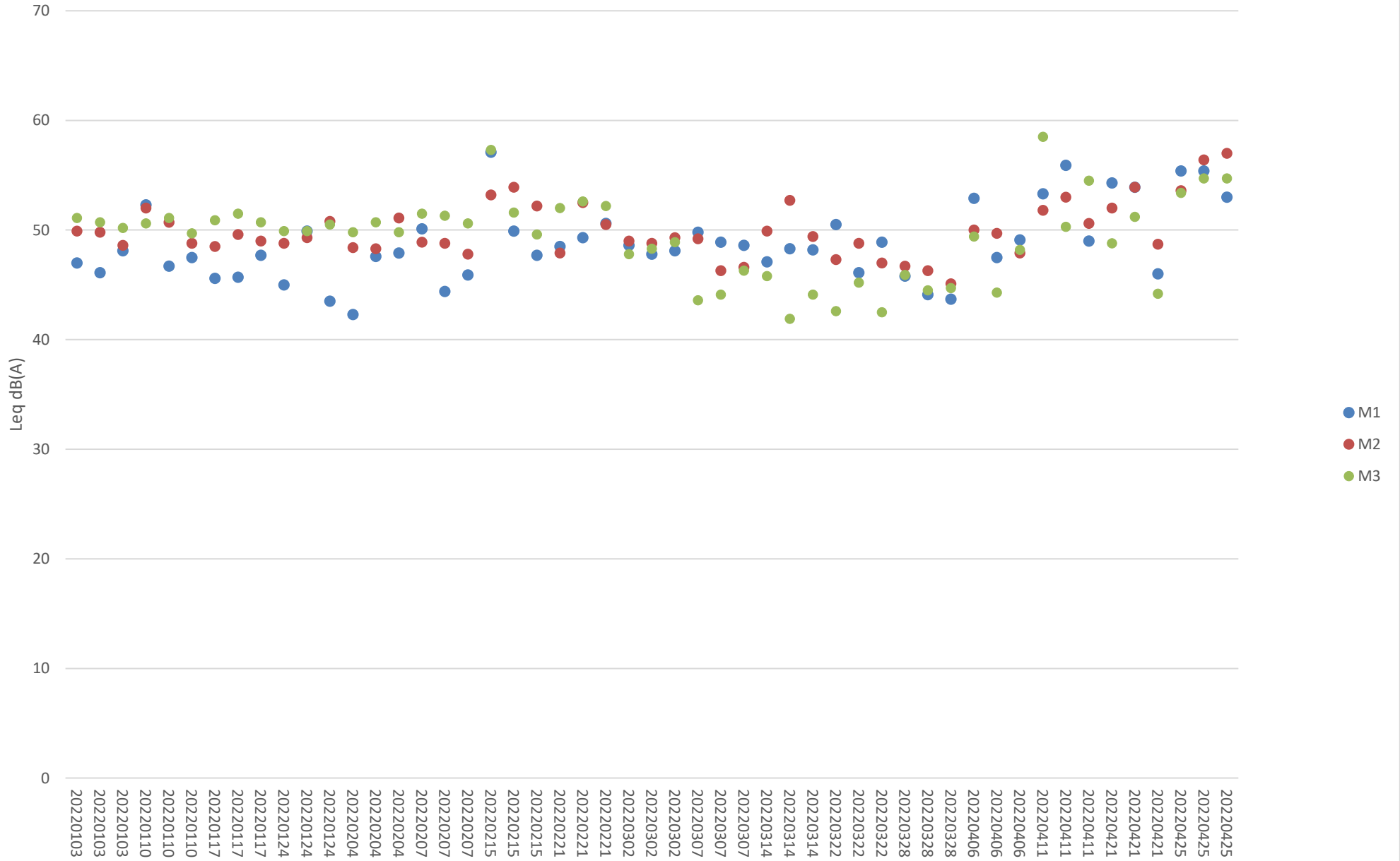
Noise Monitoring data:

Date	Start time		End time	Weather	$L_{eq\ 30min}$ dB(A) / $L_{eq\ 5min}$ dB(A)	Sound Level Meter Used	Calibrator Used
6 Apr 2022	14:08	-	14:38	Sunny	57.9	SVAN 971 (Serial No. 96063)	Casella CEL-120-1 (No.5007536)
6 Apr 2022	19:08	-	19:13	Fine	49.4	SVAN 971 (Serial No. 96063)	Casella CEL-120-1 (No.5007536)
	20:28	-	20:33		44.3		
	21:13	-	21:18		48.2		
7 Apr 2022	1:08	-	1:13	Fine	40.7	SVAN 971 (Serial No. 96063)	Casella CEL-120-1 (No.5007536)
	3:03	-	3:08		49.2		
	5:13	-	5:18		50.3		
11 Apr 2022	13:45	-	14:15	Sunny	58.6	SVAN 971 (Serial No. 103449)	Casella CEL-120-1 (No.5007536)
11 Apr 2022	19:05	-	19:10	Fine	58.5	SVAN 971 (Serial No. 103449)	Casella CEL-120-1 (No.5007536)
	20:15	-	20:20		50.3		
	21:05	-	21:10		54.5		
12 Apr 2022	1:10	-	1:15	Fine	50.3	SVAN 971 (Serial No. 103449)	Casella CEL-120-1 (No.5007536)
	3:30	-	3:35		46.3		
	5:10	-	5:15		51.0		
21 Apr 2022	14:59	-	15:29	Sunny	58.1	SVAN 971 (Serial No. 103449)	Casella CEL-120-1 (No.5007536)
21 Apr 2022	19:04	-	19:09	Fine	48.8	SVAN 971 (Serial No. 103449)	Casella CEL-120-1 (No.5007536)
	20:09	-	20:14		51.2		
	21:04	-	21:09		44.2		
22 Apr 2022	1:04	-	1:09	Fine	49.5	SVAN 971 (Serial No. 103449)	Casella CEL-120-1 (No.5007536)
	3:09	-	3:14		53.1		
	5:09	-	5:14		48.4		
25 Apr 2022	13:03	-	13:33	Fine	61.9	SVAN 971 (Serial No. 96063)	Rion NC74 (No. 34504770)
25 Apr 2022	19:03	-	19:08	Fine	53.4	SVAN 971 (Serial No. 96063)	Rion NC74 (No. 34504770)
	20:13	-	20:18		54.7		
	21:08	-	21:13		54.7		
26 Apr 2022	1:03	-	1:08	Fine	51.4	SVAN 971 (Serial No. 96063)	Rion NC74 (No. 34504770)
	3:08	-	3:13		50.6		
	5:03	-	5:08		50.8		

Impact Noise Monitoring Results during Day Time (0700 - 1900 hours)



Additional Impact Noise Monitoring Results during Evening Time (1900 - 2300 hours)



Additional Impact Noise Monitoring Results during Night Time (2300 - 0700 hours)

