

## Appendix J Noise Monitoring Data

Location: Shek Kwu Chau Treatment & Rehabilitation Centre Hostel 1 (M1 / N\_S1)

Monitoring date: 4, 7, 15, 21 February 2022 (Daytime)  
 4&5, 7&8, 15&16, 21&22 February 2022 (Evening & Night time)

Parameter :  $L_{eq\ 30min}$  (Daytime),  $L_{eq\ 5min}$  (Evening & Night time)

Noise source other than Nil  
 construction activities from  
 the Project:

Noise Monitoring Data:

Date	Start time		End time	Weather	$L_{eq\ 30min}$ dB(A) / $L_{eq\ 5min}$ dB(A)	Sound Level Meter Used	Calibrator Used
4 Feb 2022	13:02	-	13:32	Fine	55.9	SVAN 971 (Serial No. 96062)	Svantek SV33B (No. 83042)
4 Feb 2022	19:02	-	19:07	Fine	42.3	SVAN 971 (Serial No. 96062)	Svantek SV33B (No. 83042)
	20:12	-	20:17		47.6		
	21:07	-	21:12		47.9		
5 Feb 2022	1:17	-	1:22	Fine	46.7	SVAN 971 (Serial No. 96062)	Svantek SV33B (No. 83042)
	3:12	-	3:17		46.4		
	5:17	-	5:22		42.2		
7 Feb 2022	11:30	-	12:00	Cloudy	62.3	SVAN 971 (Serial No. 96062)	Svantek SV33B (No. 83042)
7 Feb 2022	19:05	-	19:10	Fine	50.1	SVAN 971 (Serial No. 96062)	Svantek SV33B (No. 83042)
	20:20	-	20:25		44.4		
	21:10	-	21:15		45.9		
8 Feb 2022	1:15	-	1:20	Fine	44.7	SVAN 971 (Serial No. 96062)	Svantek SV33B (No. 83042)
	3:10	-	3:15		44.4		
	5:10	-	5:15		43.9		
15 Feb 2022	11:00	-	11:30	Cloudy	60.2	SVAN 971 (Serial No. 96062)	Svantek SV33B (No. 83042)
15 Feb 2022	19:25	-	19:30	Fine	57.1	SVAN 971 (Serial No. 96062)	Svantek SV33B (No. 83042)
	20:25	-	20:30		49.9		
	21:25	-	21:30		47.7		
16 Feb 2022	1:10	-	1:15	Fine	45.1	SVAN 971 (Serial No. 96062)	Svantek SV33B (No. 83042)
	3:10	-	3:15		44.4		
	5:05	-	5:10		45.4		
21 Feb 2022	13:08	-	13:38	Cloudy	57.7	SVAN 971 (Serial No. 96063)	Svantek SV33B (No. 83042)
21 Feb 2022	19:03	-	19:08	Fine	48.5	SVAN 971 (Serial No. 96063)	Svantek SV33B (No. 83042)
	20:08	-	20:13		49.3		
	21:03	-	21:08		50.6		
22 Feb 2022	1:23	-	1:28	Fine	49.0	SVAN 971 (Serial No. 96063)	Svantek SV33B (No. 83042)
	3:18	-	3:23		44.7		
	5:18	-	5:23		49.8		

Location: Shek Kwu Chau Treatment & Rehabilitation Centre Hostel 2 (M2 / N\_S2)

Monitoring date: 4, 7, 15, 21 February 2022 (Daytime)  
4&5, 7&8, 15&16, 21&22 February 2022 (Evening & Night time)

Parameter :  $L_{eq\ 30min}$  (Daytime),  $L_{eq\ 5min}$  (Evening & Night time)

Noise source other than construction activities from the Project: Road Maintenance Work on 15 Feb 2022 Morning

Noise Monitoring Data:

Date	Start time		End time	Weather	$L_{eq\ 30min}$ dB(A) / $L_{eq\ 5min}$ dB(A)	Sound Level Meter Used	Calibrator Used
4 Feb 2022	13:16	-	13:46	Fine	54.4	SVAN 971 (Serial No. 96063)	Svantek SV33B (No. 83042)
4 Feb 2022	19:01	-	19:06	Fine	48.4	SVAN 971 (Serial No. 96063)	Svantek SV33B (No. 83042)
	20:16	-	20:21		48.3		
	21:16	-	21:21		51.1		
5 Feb 2022	1:11	-	1:16	Fine	47.9	SVAN 971 (Serial No. 96063)	Svantek SV33B (No. 83042)
	3:06	-	3:11		47.3		
	5:01	-	5:06		48.5		
7 Feb 2022	11:17	-	11:47	Cloudy	59.1	SVAN 971 (Serial No. 96063)	Svantek SV33B (No. 83042)
7 Feb 2022	19:02	-	19:07	Fine	48.9	SVAN 971 (Serial No. 96063)	Svantek SV33B (No. 83042)
	20:12	-	20:17		48.8		
	21:12	-	21:17		47.8		
8 Feb 2022	1:12	-	1:17	Fine	45.9	SVAN 971 (Serial No. 96063)	Svantek SV33B (No. 83042)
	3:07	-	3:12		45.7		
	5:12	-	5:17		45.5		
15 Feb 2022	10:46	-	11:16	Cloudy	66.5	SVAN 971 (Serial No. 96063)	Svantek SV33B (No. 83042)
15 Feb 2022	19:01	-	19:06	Fine	53.2	SVAN 971 (Serial No. 96063)	Svantek SV33B (No. 83042)
	20:06	-	20:11		53.9		
	21:21	-	21:26		52.2		
16 Feb 2022	1:06	-	1:11	Fine	51.5	SVAN 971 (Serial No. 96063)	Svantek SV33B (No. 83042)
	3:11	-	3:16		51.9		
	5:01	-	5:06		52.8		
21 Feb 2022	12:57	-	13:27	Cloudy	61.7	SVAN 971 (Serial No. 96063)	Svantek SV33B (No. 83042)
21 Feb 2022	19:02	-	19:07	Fine	47.9	SVAN 971 (Serial No. 96063)	Svantek SV33B (No. 83042)
	20:02	-	20:07		52.5		
	22:47	-	22:52		50.5		
22 Feb 2022	1:37	-	1:42	Fine	50.1	SVAN 971 (Serial No. 96063)	Svantek SV33B (No. 83042)
	3:27	-	3:32		48.9		
	5:12	-	5:17		51.5		

Location: Shek Kwu Chau Treatment & Rehabilitation Centre Hostel 3 (M3 / N\_S3)

Monitoring date: 4, 7, 15, 21 February 2022 (Daytime)  
 4&5, 7&8, 15&16, 21&22 February 2022 (Evening & Night time)

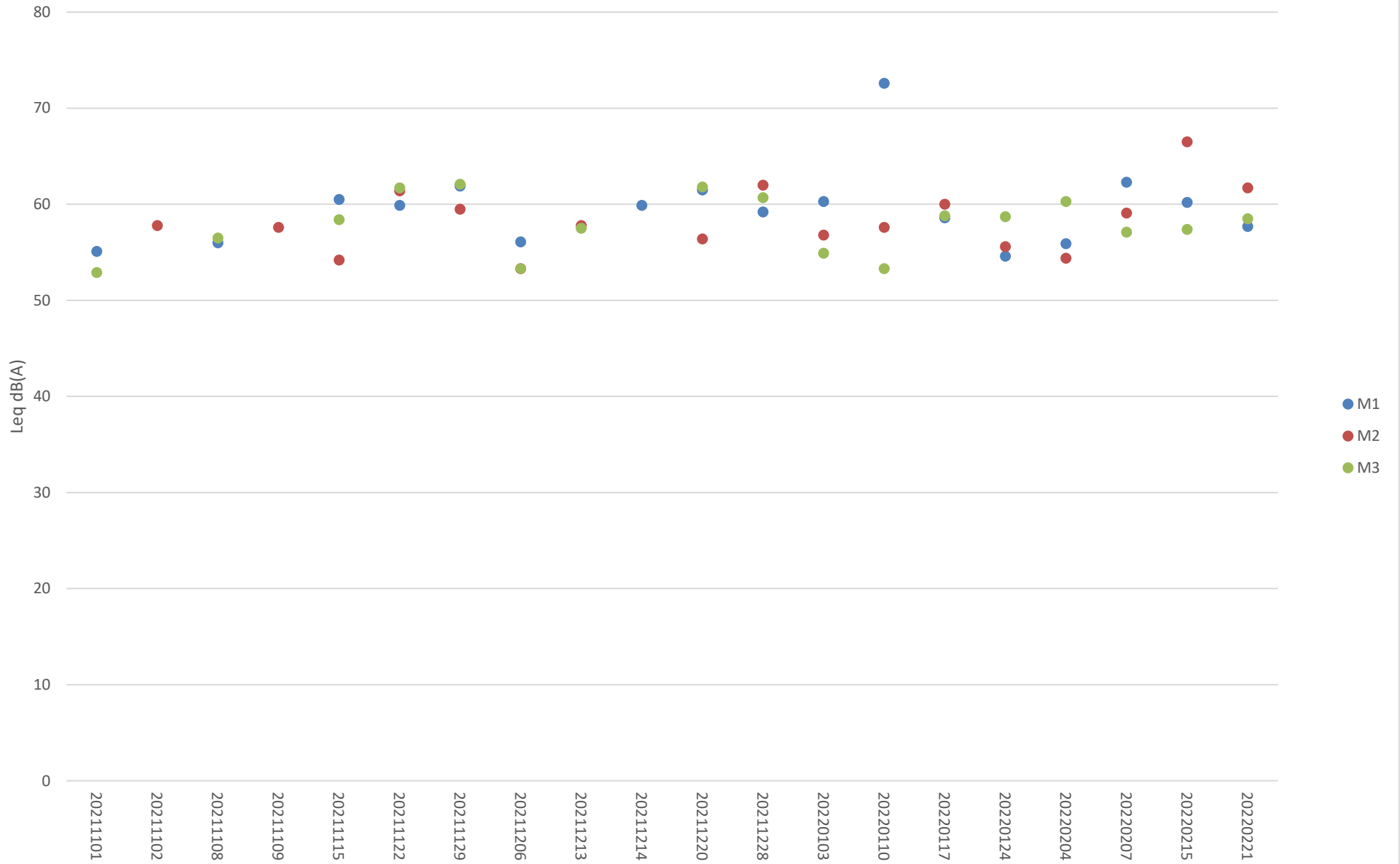
Parameter :  $L_{eq\ 30min}$  (Daytime),  $L_{eq\ 5min}$  (Evening & Night time)

Noise source other than construction activities from the Project: Air-conditioner

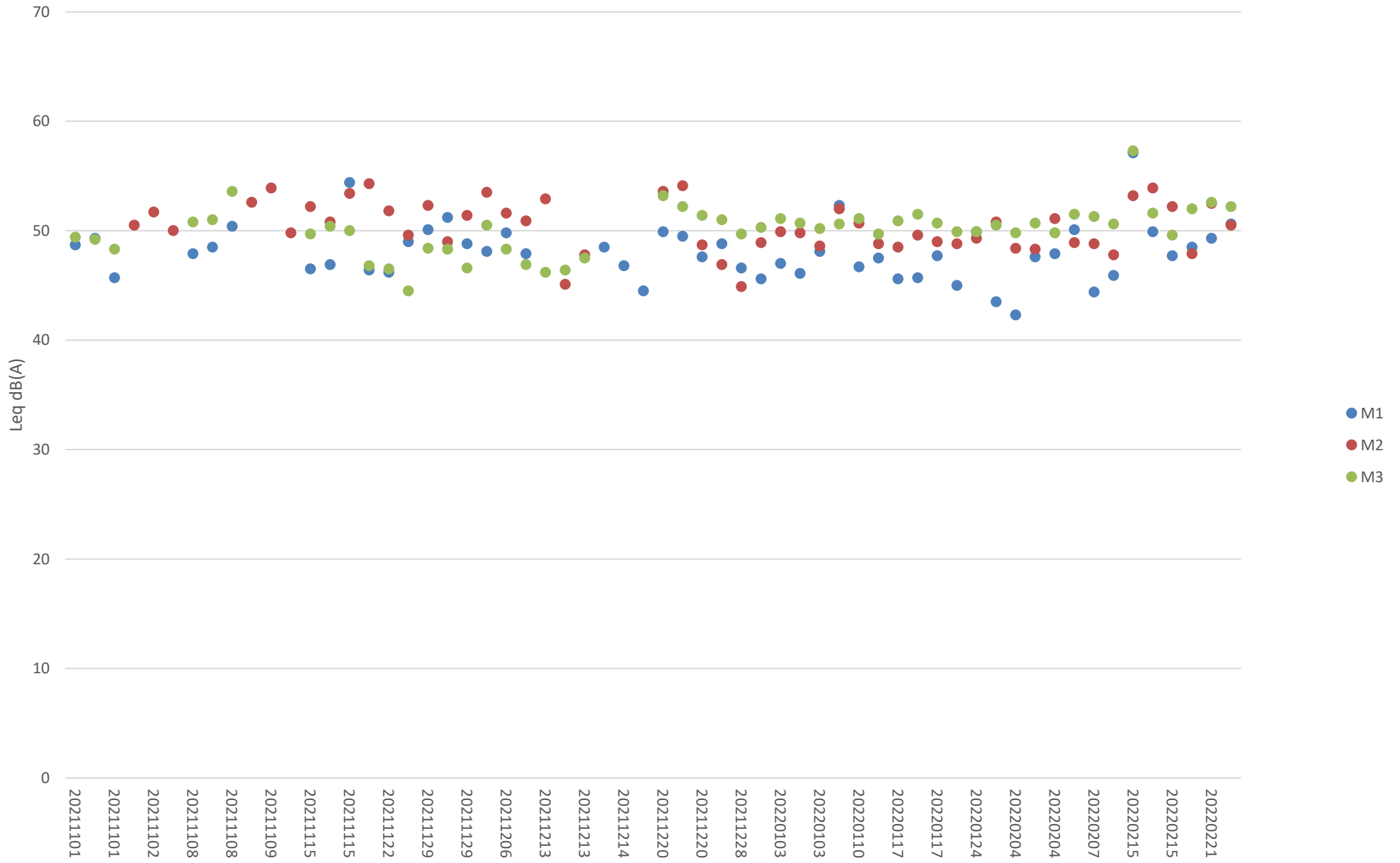
Noise Monitoring data:

Date	Start time		End time	Weather	$L_{eq\ 30min}$ dB(A) / $L_{eq\ 5min}$ dB(A)	Sound Level Meter Used	Calibrator Used
4 Feb 2022	13:05	-	13:35	Fine	60.3	NTi XL2 (Serial A2A-17638-E0)	Svantek SV33B (No. 83042)
4 Feb 2022	19:05	-	19:10	Fine	49.8	NTi XL2 (Serial A2A-17638-E0)	Svantek SV33B (No. 83042)
	20:25	-	20:30		50.7		
	21:10	-	21:15		49.8		
5 Feb 2022	1:20	-	1:25	Fine	49.5	NTi XL2 (Serial A2A-17638-E0)	Svantek SV33B (No. 83042)
	3:10	-	3:15		51.3		
	5:20	-	5:25		49.8		
7 Feb 2022	11:30	-	12:00	Cloudy	57.1	NTi XL2 (Serial A2A-17638-E0)	Svantek SV33B (No. 83042)
7 Feb 2022	19:05	-	19:10	Fine	51.5	NTi XL2 (Serial A2A-17638-E0)	Svantek SV33B (No. 83042)
	20:30	-	20:35		51.3		
	21:20	-	21:25		50.6		
8 Feb 2022	1:10	-	1:15	Fine	50.1	NTi XL2 (Serial A2A-17638-E0)	Svantek SV33B (No. 83042)
	3:40	-	3:45		49.6		
	5:10	-	5:15		49.5		
15 Feb 2022	11:17	-	11:47	Cloudy	57.4	NTi XL2 (Serial A2A-17638-E0)	Svantek SV33B (No. 83042)
15 Feb 2022	19:02	-	19:07	Fine	57.3	NTi XL2 (Serial A2A-17638-E0)	Svantek SV33B (No. 83042)
	20:27	-	20:32		51.6		
	21:22	-	21:27		49.6		
16 Feb 2022	1:02	-	1:07	Fine	49.5	NTi XL2 (Serial A2A-17638-E0)	Svantek SV33B (No. 83042)
	3:12	-	3:17		49.8		
	5:02	-	5:07		53.3		
21 Feb 2022	13:01	-	13:31	Cloudy	58.5	NTi XL2 (Serial A2A-17638-E0)	Svantek SV33B (No. 83042)
21 Feb 2022	19:06	-	19:11	Fine	52.0	NTi XL2 (Serial A2A-17638-E0)	Svantek SV33B (No. 83042)
	20:11	-	20:16		52.6		
	22:46	-	22:51		52.2		
22 Feb 2022	1:41	-	1:46	Fine	51.3	NTi XL2 (Serial A2A-17638-E0)	Svantek SV33B (No. 83042)
	3:26	-	3:31		50.8		
	5:16	-	5:21		53.6		

### Impact Noise Monitoring Results during Day Time (0700 - 1900 hours)



# Additional Impact Noise Monitoring Results during Evening Time (1900 - 2300 hours)



# Additional Impact Noise Monitoring Results during Night Time (2300 - 0700 hours)

