

## Appendix J Noise Monitoring Data

Location: Shek Kwu Chau Treatment & Rehabilitation Centre Hostel 1 (M1 / N\_S1)

Monitoring date: 3, 10, 17, 24 January 2022 (Daytime)

3&4, 10&11, 17&18, 24&25 January 2022 (Evening & Night time)

Parameter :  $L_{eq\ 30min}$  (Daytime),  $L_{eq\ 5min}$  (Evening & Night time)

Noise source other than construction activities from the Project: Grass mowing on 10 January 2022 morning

Noise Monitoring Data:

Date	Start time		End time	Weather	$L_{eq\ 30min}$ dB(A) / $L_{eq\ 5min}$ dB(A)	Sound Level Meter Used	Calibrator Used
3 Jan 2022	11:03	-	11:33	Fine	60.3	SVAN 971 (Serial No. 96062)	Svantek SV33B (No. 83042)
3 Jan 2022	19:03	-	19:08	Fine	47.0	SVAN 971 (Serial No. 96062)	Svantek SV33B (No. 83042)
	20:13	-	20:18		46.1		
	21:23	-	21:28		48.1		
4 Jan 2022	1:08	-	1:13	Fine	44.3	SVAN 971 (Serial No. 96062)	Svantek SV33B (No. 83042)
	3:28	-	3:33		43.3		
	5:28	-	5:33		46.5		
10 Jan 2022	10:42	-	11:12	Fine	72.6	SVAN 971 (Serial No. 96062)	Svantek SV33B (No. 83042)
10 Jan 2022	19:02	-	19:07	Fine	52.3	SVAN 971 (Serial No. 96062)	Svantek SV33B (No. 83042)
	20:07	-	20:12		46.7		
	21:02	-	21:07		47.5		
11 Jan 2022	1:02	-	1:07	Fine	44.0	SVAN 971 (Serial No. 96062)	Svantek SV33B (No. 83042)
	3:12	-	3:17		40.8		
	5:17	-	5:22		43.2		
17 Jan 2022	11:35	-	12:05	Fine	58.6	SVAN 971 (Serial No. 96062)	Svantek SV33B (No. 83042)
17 Jan 2022	19:05	-	19:10	Fine	45.6	SVAN 971 (Serial No. 96062)	Svantek SV33B (No. 83042)
	20:20	-	20:25		45.7		
	21:15	-	21:20		47.7		
18 Jan 2022	1:10	-	1:15	Fine	44.0	SVAN 971 (Serial No. 96062)	Svantek SV33B (No. 83042)
	3:25	-	3:30		44.2		
	5:10	-	5:15		44.1		
24 Jan 2022	13:18	-	13:48	Fine	54.6	SVAN 971 (Serial No. 96062)	Svantek SV33B (No. 83042)
24 Jan 2022	19:03	-	19:08	Fine	45.0	SVAN 971 (Serial No. 96062)	Svantek SV33B (No. 83042)
	20:03	-	20:08		49.9		
	21:08	-	21:13		43.5		
25 Jan 2022	1:18	-	1:23	Fine	42.9	SVAN 971 (Serial No. 96062)	Svantek SV33B (No. 83042)
	3:18	-	3:23		40.9		
	5:33	-	5:38		42.2		

Location: Shek Kwu Chau Treatment & Rehabilitation Centre Hostel 2 (M2 / N\_S2)

Monitoring date: 3, 10, 17, 24 January 2022 (Daytime)

3&4, 10&11, 17&18, 24&25 January 2022 (Evening & Night time)

Parameter :  $L_{eq\ 30min}$  (Daytime),  $L_{eq\ 5min}$  (Evening & Night time)

Noise source other than Nil  
construction activities from  
the Project:

Noise Monitoring Data:

Date	Start time		End time	Weather	$L_{eq\ 30min}$ dB(A) / $L_{eq\ 5min}$ dB(A)	Sound Level Meter Used	Calibrator Used
3 Jan 2022	11:19	-	11:49	Fine	56.8	SVAN 971 (Serial No. 96063)	Svantek SV33B (No. 83042)
3 Jan 2022	19:04	-	19:09	Fine	49.9	SVAN 971 (Serial No. 96063)	Svantek SV33B (No. 83042)
	20:09	-	20:14		49.8		
	21:19	-	21:24		48.6		
4 Jan 2022	1:34	-	1:39	Fine	45.2	SVAN 971 (Serial No. 96063)	Svantek SV33B (No. 83042)
	3:14	-	3:19		45.8		
	5:19	-	5:24		44.8		
10 Jan 2022	10:52	-	11:22	Fine	57.6	SVAN 971 (Serial No. 96063)	Svantek SV33B (No. 83042)
10 Jan 2022	19:02	-	19:07	Fine	52.0	SVAN 971 (Serial No. 96063)	Svantek SV33B (No. 83042)
	20:12	-	20:17		50.7		
	21:17	-	21:22		48.8		
11 Jan 2022	2:12	-	2:17	Fine	48.7	SVAN 971 (Serial No. 96063)	Svantek SV33B (No. 83042)
	3:07	-	3:12		51.6		
	5:22	-	5:27		52.0		
17 Jan 2022	13:21	-	13:51	Fine	60.0	SVAN 971 (Serial No. 96063)	Svantek SV33B (No. 83042)
17 Jan 2022	19:16	-	19:21	Fine	48.5	SVAN 971 (Serial No. 96063)	Svantek SV33B (No. 83042)
	20:06	-	20:11		49.6		
	21:06	-	21:11		49.0		
18 Jan 2022	1:11	-	1:16	Fine	44.9	SVAN 971 (Serial No. 96063)	Svantek SV33B (No. 83042)
	3:16	-	3:21		44.5		
	5:11	-	5:16		44.3		
24 Jan 2022	13:02	-	13:32	Fine	55.6	SVAN 971 (Serial No. 96063)	Svantek SV33B (No. 83042)
24 Jan 2022	19:07	-	19:12	Fine	48.8	SVAN 971 (Serial No. 96063)	Svantek SV33B (No. 83042)
	20:12	-	20:17		49.3		
	21:22	-	21:27		50.8		
25 Jan 2022	1:22	-	1:27	Fine	49.7	SVAN 971 (Serial No. 96063)	Svantek SV33B (No. 83042)
	3:12	-	3:17		47.0		
	5:17	-	5:22		48.0		

Location: Shek Kwu Chau Treatment & Rehabilitation Centre Hostel 3 (M3 / N\_S3)

Monitoring date: 3, 10, 17, 24 January 2022 (Daytime)

3&4, 10&11, 17&18, 24&25 January 2022 (Evening & Night time)

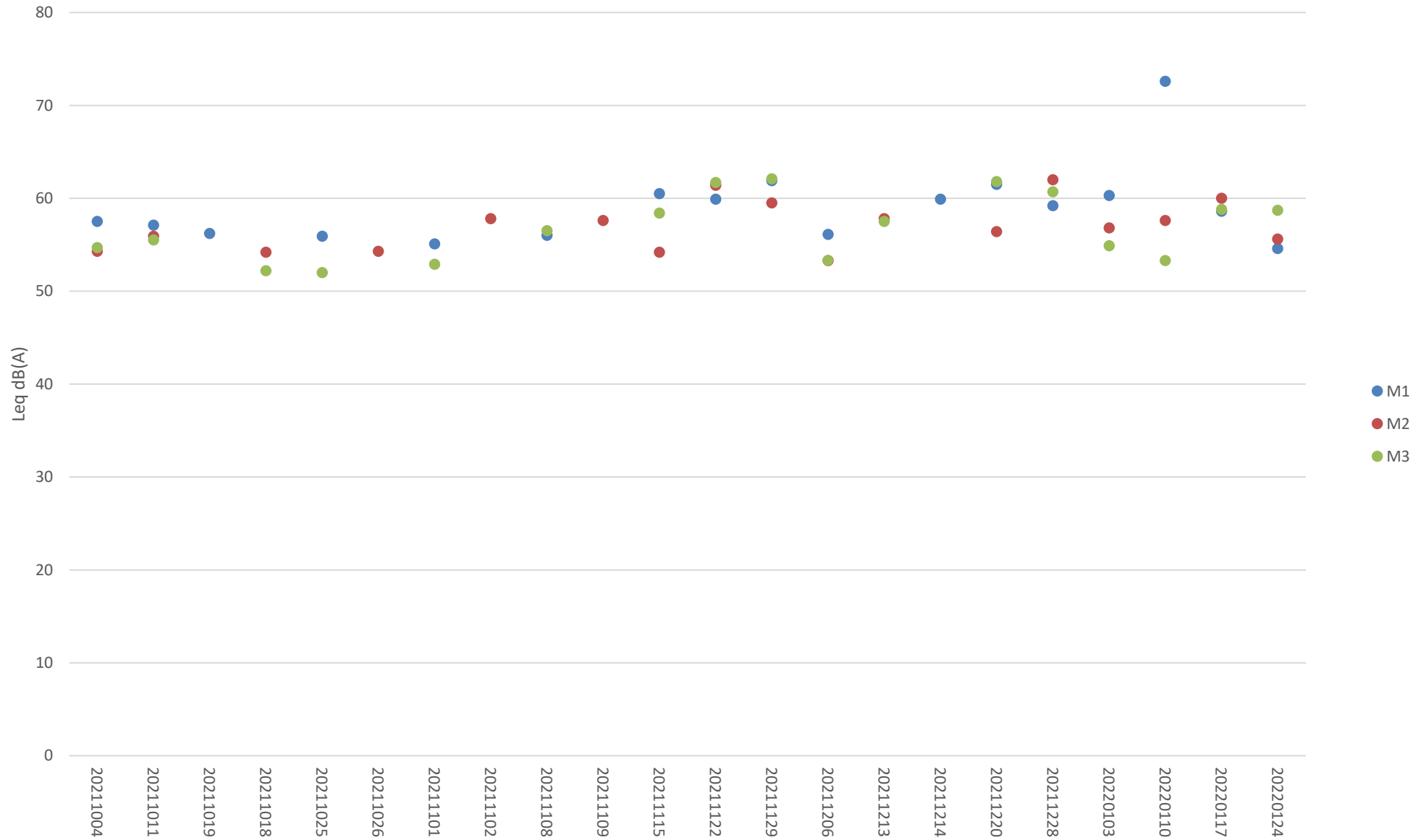
Parameter :  $L_{eq\ 30min}$  (Daytime),  $L_{eq\ 5min}$  (Evening & Night time)

Noise source other than construction activities from the Project: Air-conditioner

Noise Monitoring data:

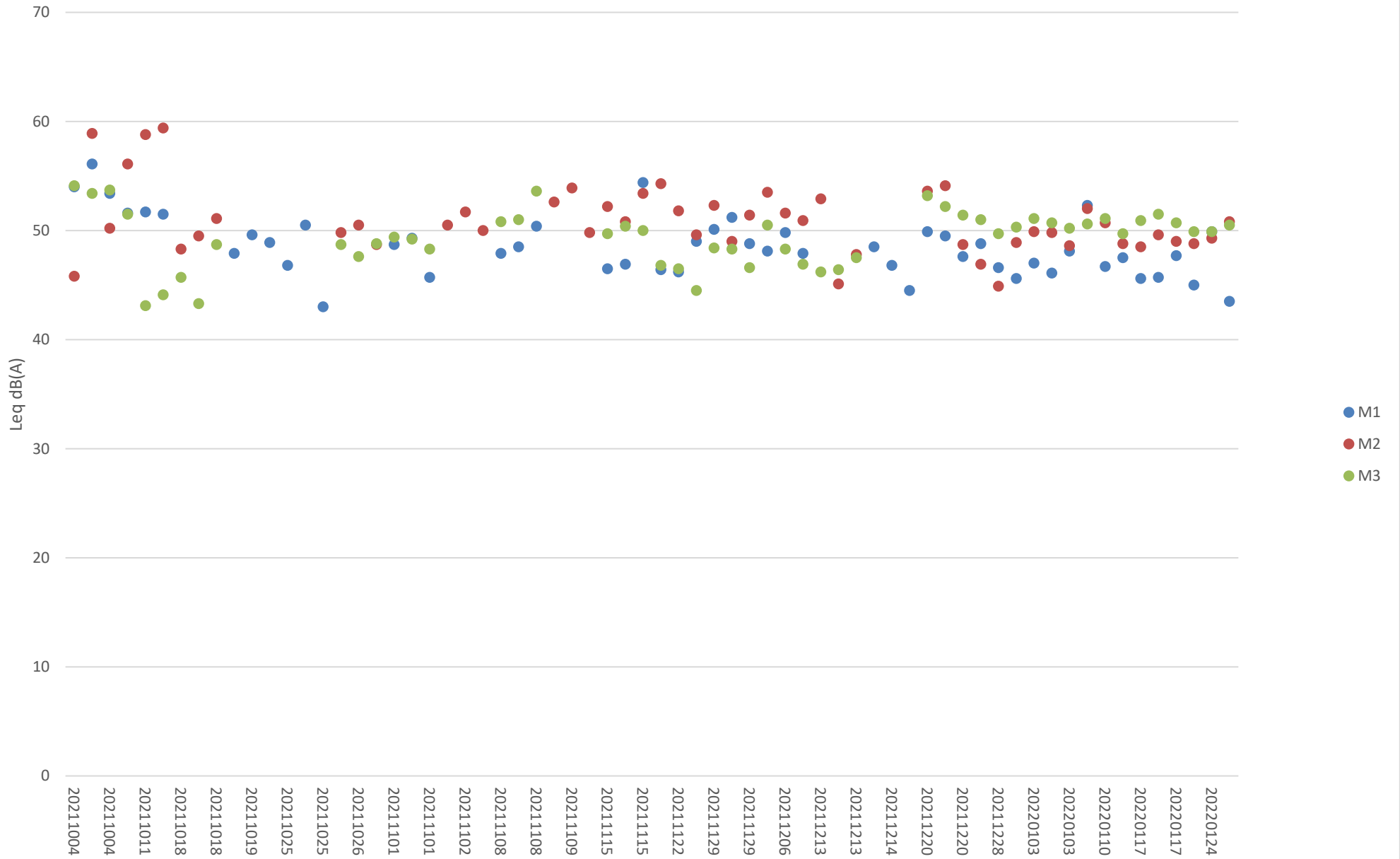
Date	Start time		End time	Weather	$L_{eq\ 30min}$ dB(A) / $L_{eq\ 5min}$ dB(A)	Sound Level Meter Used	Calibrator Used
3 Jan 2022	11:13	-	11:43	Fine	54.9	NTi XL2 (Serial A2A-17638-E0)	Svantek SV33B (No. 83042)
3 Jan 2022	19:03	-	19:08	Fine	51.1	NTi XL2 (Serial A2A-17638-E0)	Svantek SV33B (No. 83042)
	20:23	-	20:28		50.7		
	21:18	-	21:23		50.2		
4 Jan 2022	1:13	-	1:18	Fine	50.2	NTi XL2 (Serial A2A-17638-E0)	Svantek SV33B (No. 83042)
	3:23	-	3:28		49.9		
	5:13	-	5:18		49.9		
10 Jan 2022	11:10	-	11:40	Fine	53.3	NTi XL2 (Serial A2A-17638-E0)	Svantek SV33B (No. 83042)
10 Jan 2022	19:05	-	19:10	Fine	50.6	NTi XL2 (Serial A2A-17638-E0)	Svantek SV33B (No. 83042)
	20:10	-	20:15		51.1		
	21:20	-	21:25		49.7		
11 Jan 2022	1:25	-	1:30	Fine	49.7	NTi XL2 (Serial A2A-17638-E0)	Svantek SV33B (No. 83042)
	3:25	-	3:30		49.1		
	5:15	-	5:20		49.7		
17 Jan 2022	11:43	-	12:13	Fine	58.8	NTi XL2 (Serial A2A-17638-E0)	Svantek SV33B (No. 83042)
17 Jan 2022	19:03	-	19:08	Fine	50.9	NTi XL2 (Serial A2A-17638-E0)	Svantek SV33B (No. 83042)
	20:18	-	20:23		51.5		
	21:13	-	21:18		50.7		
18 Jan 2022	1:13	-	1:18	Fine	49.9	NTi XL2 (Serial A2A-17638-E0)	Svantek SV33B (No. 83042)
	3:33	-	3:38		50.3		
	5:13	-	5:18		50.0		
24 Jan 2022	13:07	-	13:37	Fine	58.7	NTi XL2 (Serial A2A-17638-E0)	Svantek SV33B (No. 83042)
24 Jan 2022	19:12	-	19:17	Fine	49.9	NTi XL2 (Serial A2A-17638-E0)	Svantek SV33B (No. 83042)
	20:32	-	20:37		49.9		
	21:22	-	21:27		50.5		
25 Jan 2022	1:17	-	1:22	Fine	50.7	NTi XL2 (Serial A2A-17638-E0)	Svantek SV33B (No. 83042)
	3:12	-	3:17		49.3		
	5:02	-	5:07		49.6		

### Impact Noise Monitoring Results during Day Time (0700 - 1900 hours)



Note: The relatively high noise on 10 January 2022 was caused by the grass mowing activity on 10 January 2022 morning at M1 station.

# Additional Impact Noise Monitoring Results during Evening Time (1900 - 2300 hours)



# Additional Impact Noise Monitoring Results during Night Time (2300 - 0700 hours)

