

## Appendix J Noise Monitoring Data

Location: Shek Kwu Chau Treatment & Rehabilitation Centre Hostel 1 (M1 / N\_S1)

Monitoring date: 6, 14, 20, 28 December 2021 (Daytime)

6&7, 14&15, 20&21, 28&29 December 2021 (Evening & Night time)

Parameter :  $L_{eq\ 30min}$  (Daytime),  $L_{eq\ 5min}$  (Evening & Night time)

Noise source other than construction activities from the Project: Nil

Noise Monitoring Data:

Date	Start time		End time	Weather	$L_{eq\ 30min}$ dB(A) / $L_{eq\ 5min}$ dB(A)	Sound Level Meter Used	Calibrator Used
6 Dec 2021	11:24	-	11:54	Sunny	56.1	SVAN 971 (Serial No. 96063)	Svantek SV33B (No. 83042)
6 Dec 2021	19:14	-	19:19	Fine	48.1	SVAN 971 (Serial No. 96063)	Svantek SV33B (No. 83042)
	20:14	-	20:19		49.8		
	21:24	-	21:29		47.9		
7 Dec 2021	1:14	-	1:19	Fine	47.2	SVAN 971 (Serial No. 96063)	Svantek SV33B (No. 83042)
	3:29	-	3:34		44.5		
	5:39	-	5:44		44.9		
14 Dec 2021	12:50	-	13:20	Sunny	59.9	SVAN 971 (Serial No. 96063)	Svantek SV33B (No. 83042)
14 Dec 2021	19:05	-	19:10	Fine	48.5	SVAN 971 (Serial No. 96063)	Svantek SV33B (No. 83042)
	20:05	-	20:10		46.8		
	21:05	-	21:10		44.5		
15 Dec 2021	1:20	-	1:25	Fine	44.3	SVAN 971 (Serial No. 96063)	Svantek SV33B (No. 83042)
	3:25	-	3:30		42.4		
	5:20	-	5:25		43.3		
20 Dec 2021	13:37	-	14:07	Cloudy	61.5	SVAN 971 (Serial No. 96063)	Svantek SV33B (No. 83042)
20 Dec 2021	19:07	-	19:12	Fine	49.9	SVAN 971 (Serial No. 96063)	Svantek SV33B (No. 83042)
	20:12	-	20:17		49.5		
	21:12	-	21:17		47.6		
21 Dec 2021	1:22	-	1:27	Fine	47.0	SVAN 971 (Serial No. 96063)	Svantek SV33B (No. 83042)
	3:07	-	3:12		48.3		
	5:17	-	5:22		47.1		
28 Dec 2021	10:58	-	11:28	Fine	59.2	SVAN 971 (Serial No. 96062)	Svantek SV33B (No. 83042)
28 Dec 2021	19:03	-	19:08	Fine	48.8	SVAN 971 (Serial No. 96062)	Svantek SV33B (No. 83042)
	20:13	-	20:18		46.6		
	21:23	-	21:28		45.6		
29 Dec 2021	1:13	-	1:18	Fine	43.5	SVAN 971 (Serial No. 96062)	Svantek SV33B (No. 83042)
	3:03	-	3:08		40.7		
	5:08	-	5:13		45.5		

Location: Shek Kwu Chau Treatment & Rehabilitation Centre Hostel 2 (M2 / N\_S2)

Monitoring date: 6, 13, 20, 28 December 2021 (Daytime)

6&7, 13&14, 20&21, 28&29 December 2021 (Evening & Night time)

Parameter :  $L_{eq\ 30min}$  (Daytime),  $L_{eq\ 5min}$  (Evening & Night time)

Noise source other than construction activities from the Project: Nil

Noise Monitoring Data:

Date	Start time		End time	Weather	$L_{eq\ 30min}$ dB(A) / $L_{eq\ 5min}$ dB(A)	Sound Level Meter Used	Calibrator Used
6 Dec 2021	11:50	-	12:20	Sunny	53.3	SVAN 971 (Serial No. 96062)	Svantek SV33B (No. 83042)
6 Dec 2021	19:05	-	19:10	Fine	53.5	SVAN 971 (Serial No. 96062)	Svantek SV33B (No. 83042)
	20:10	-	20:15		51.6		
	21:15	-	21:20		50.9		
7 Dec 2021	1:10	-	1:15	Fine	47.8	SVAN 971 (Serial No. 96062)	Svantek SV33B (No. 83042)
	3:10	-	3:15		47.3		
	5:15	-	5:20		46.6		
13 Dec 2021	13:13	-	13:43	Sunny	57.8	SVAN 971 (Serial No. 96062)	Svantek SV33B (No. 83042)
13 Dec 2021	19:03	-	19:08	Fine	52.9	SVAN 971 (Serial No. 96062)	Svantek SV33B (No. 83042)
	20:08	-	20:13		45.1		
	21:13	-	21:18		47.8		
14 Dec 2021	1:13	-	1:18	Fine	44.5	SVAN 971 (Serial No. 96062)	Svantek SV33B (No. 83042)
	3:08	-	3:13		43.5		
	5:18	-	5:23		47.7		
20 Dec 2021	13:48	-	14:18	Cloudy	56.4	SVAN 971 (Serial No. 96062)	Svantek SV33B (No. 83042)
20 Dec 2021	19:03	-	19:08	Fine	53.6	SVAN 971 (Serial No. 96062)	Svantek SV33B (No. 83042)
	20:03	-	20:08		54.1		
	21:08	-	21:13		48.7		
21 Dec 2021	1:08	-	1:13	Fine	50.1	SVAN 971 (Serial No. 96062)	Svantek SV33B (No. 83042)
	3:08	-	3:13		52.0		
	5:28	-	5:33		52.2		
28 Dec 2021	13:46	-	14:16	Fine	62.0	SVAN 971 (Serial No. 96063)	Svantek SV33B (No. 83042)
28 Dec 2021	19:01	-	19:06	Fine	46.9	SVAN 971 (Serial No. 96063)	Svantek SV33B (No. 83042)
	20:11	-	20:16		44.9		
	21:36	-	21:41		48.9		
29 Dec 2021	1:11	-	1:16	Fine	43.7	SVAN 971 (Serial No. 96063)	Svantek SV33B (No. 83042)
	3:01	-	3:06		42.8		
	5:06	-	5:11		42.6		

Location: Shek Kwu Chau Treatment & Rehabilitation Centre Hostel 3 (M3 / N\_S3)

Monitoring date: 6, 13, 20, 28 December 2021 (Daytime)

6&7, 13&14, 20&21, 28&29 December 2021 (Evening & Night time)

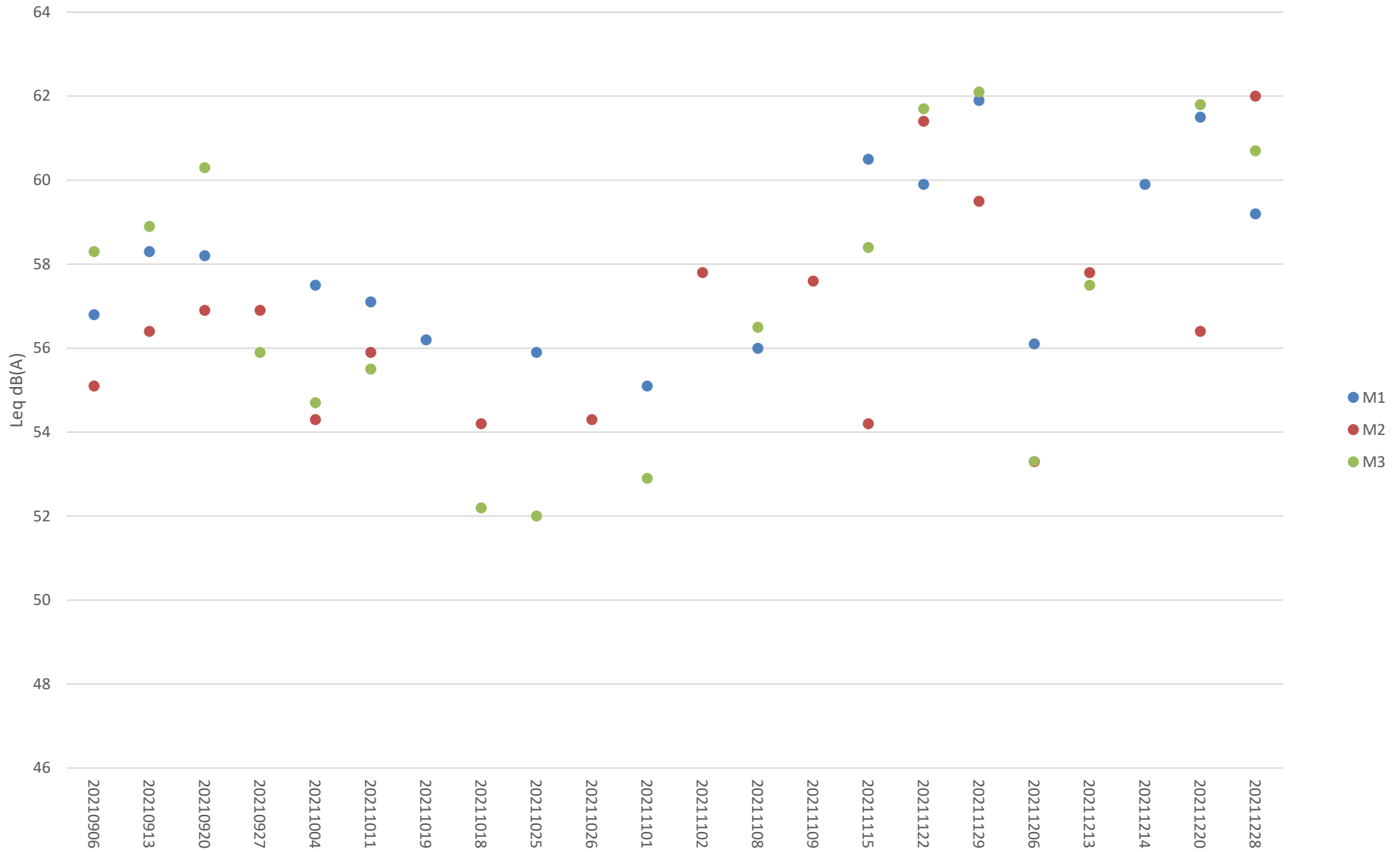
Parameter :  $L_{eq\ 30min}$  (Daytime),  $L_{eq\ 5min}$  (Evening & Night time)

Noise source other than construction activities from the Project: Air-conditioner

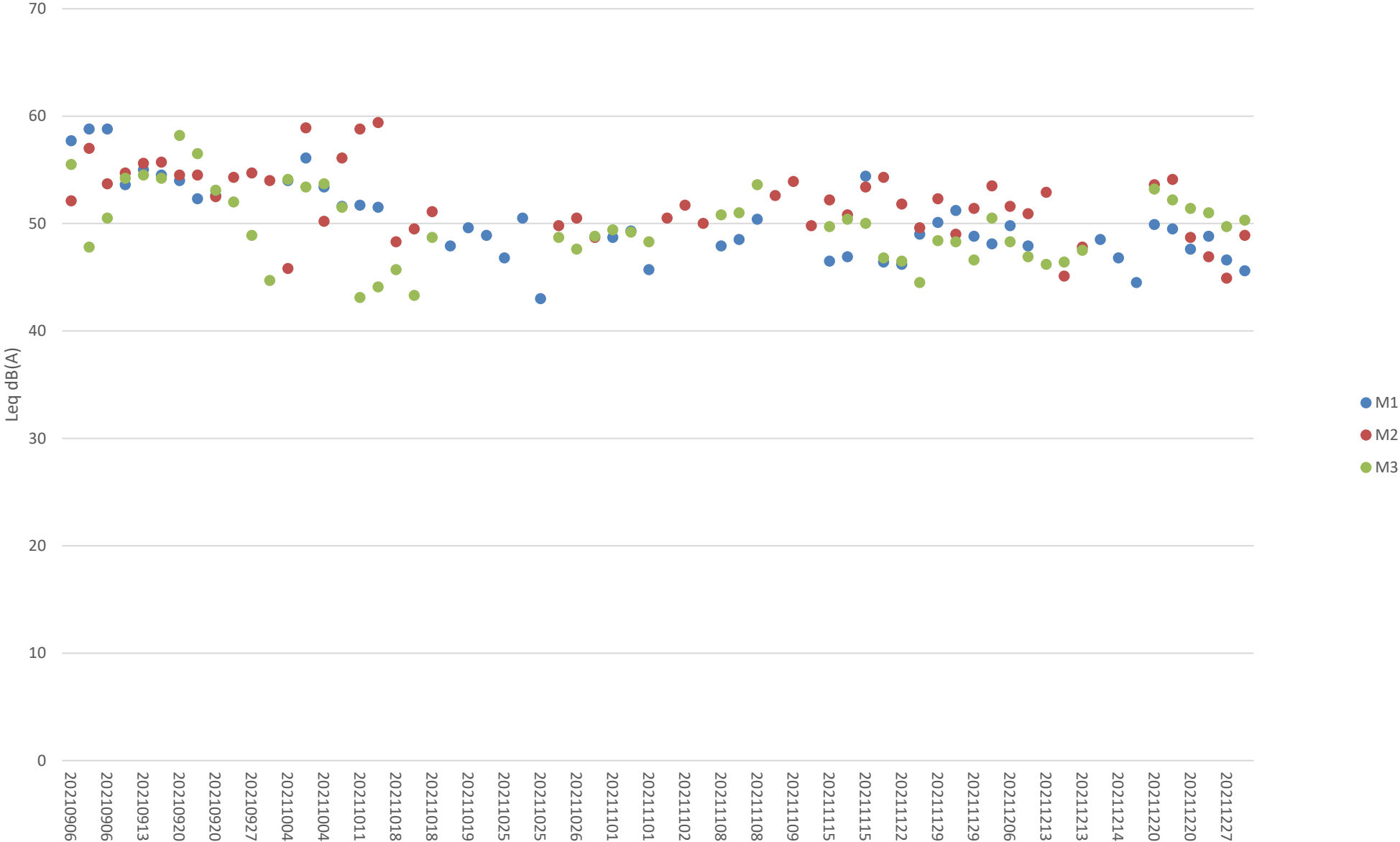
Noise Monitoring data:

Date	Start time		End time	Weather	$L_{eq\ 30min}$ dB(A) / $L_{eq\ 5min}$ dB(A)	Sound Level Meter Used	Calibrator Used
6 Dec 2021	11:35	-	12:05	Sunny	53.3	NTi XL2 (Serial A2A-17638-E0)	Svantek SV33B (No. 83042)
6 Dec 2021	19:05	-	19:10	Fine	50.5	NTi XL2 (Serial A2A-17638-E0)	Svantek SV33B (No. 83042)
	20:10	-	20:15		48.3		
	21:20	-	21:25		46.9		
7 Dec 2021	1:05	-	1:10	Fine	47.5	NTi XL2 (Serial A2A-17638-E0)	Svantek SV33B (No. 83042)
	3:05	-	3:10		45.5		
	5:15	-	5:20		45.6		
13 Dec 2021	13:06	-	13:36	Sunny	57.5	NTi XL2 (Serial A2A-17638-E0)	Svantek SV33B (No. 83042)
13 Dec 2021	19:01	-	19:06	Fine	46.2	NTi XL2 (Serial A2A-17638-E0)	Svantek SV33B (No. 83042)
	20:06	-	20:11		46.4		
	21:06	-	21:11		47.5		
14 Dec 2021	1:21	-	1:26	Fine	49.2	NTi XL2 (Serial A2A-17638-E0)	Svantek SV33B (No. 83042)
	3:11	-	3:16		45.5		
	5:16	-	5:21		42.9		
20 Dec 2021	13:25	-	13:55	Cloudy	61.8	NTi XL2 (Serial A2A-17638-E0)	Svantek SV33B (No. 83042)
20 Dec 2021	19:05	-	19:10	Fine	53.2	NTi XL2 (Serial A2A-17638-E0)	Svantek SV33B (No. 83042)
	20:15	-	20:20		52.2		
	21:15	-	21:20		51.4		
21 Dec 2021	1:05	-	1:10	Fine	50.1	NTi XL2 (Serial A2A-17638-E0)	Svantek SV33B (No. 83042)
	3:05	-	3:10		53.3		
	5:10	-	5:15		50.8		
28 Dec 2021	11:18	-	11:48	Fine	60.7	NTi XL2 (Serial A2A-17638-E0)	Svantek SV33B (No. 83042)
28 Dec 2021	19:08	-	19:13	Fine	51.0	NTi XL2 (Serial A2A-17638-E0)	Svantek SV33B (No. 83042)
	20:08	-	20:13		49.7		
	21:13	-	21:18		50.3		
29 Dec 2021	1:13	-	1:18	Fine	49.8	NTi XL2 (Serial A2A-17638-E0)	Svantek SV33B (No. 83042)
	3:13	-	3:18		49.2		
	5:23	-	5:28		50.7		

### Impact Noise Monitoring Results during Day Time (0700 - 1900 hours)



### Additional Impact Noise Monitoring Results during Evening Time (1900 - 2300 hours)



### Additional Impact Noise Monitoring Results during Night Time (2300 - 0700 hours)

