

Appendix J Noise Monitoring Data

Location: Shek Kwu Chau Treatment & Rehabilitation Centre Hostel 1 (M1 / N_S1)

Monitoring date: 1, 8, 15, 22, 29 November 2021 (Daytime)

1&2, 8&9, 15&16, 22&23, 29&30 November 2021 (Evening & Night time)

Parameter : $L_{eq\ 30min}$ (Daytime), $L_{eq\ 5min}$ (Evening & Night time)

Noise source other than construction activities from the Project: Nil

Noise Monitoring Data:

Date	Start time		End time	Weather	$L_{eq\ 30min}$ dB(A) / $L_{eq\ 5min}$ dB(A)	Sound Level Meter Used	Calibrator Used
1 Nov 2021	13:43	-	14:13	Sunny	55.1	SVAN 971 (Serial No. 96062)	Svantek SV33B (No. 83042)
1 Nov 2021	19:08	-	19:13	Fine	48.7	SVAN 971 (Serial No. 96062)	Svantek SV33B (No. 83042)
	20:18	-	20:23		49.3		
	21:23	-	21:28		45.7		
2 Nov 2021	01:18	-	01:23	Fine	45.8	SVAN 971 (Serial No. 96062)	Svantek SV33B (No. 83042)
	03:03	-	03:08		46.6		
	05:33	-	05:38		43.7		
8 Nov 2021	13:11	-	13:41	Sunny	56.0	SVAN 971 (Serial No. 96062)	Svantek SV33B (No. 83042)
8 Nov 2021	19:16	-	19:21	Fine	47.9	SVAN 971 (Serial No. 96062)	Svantek SV33B (No. 83042)
	20:26	-	20:31		48.5		
	21:46	-	21:51		50.4		
9 Nov 2021	01:16	-	01:21	Fine	43.9	SVAN 971 (Serial No. 96062)	Svantek SV33B (No. 83042)
	03:41	-	03:46		45.1		
	05:31	-	05:36		46.3		
15 Nov 2021	13:05	-	13:35	Sunny	60.5	SVAN 971 (Serial No. 96063)	Svantek SV33B (No. 83042)
15 Nov 2021	19:00	-	19:05	Fine	46.5	SVAN 971 (Serial No. 96063)	Svantek SV33B (No. 83042)
	20:05	-	20:10		46.9		
	21:30	-	21:35		54.4		
16 Nov 2021	01:05	-	01:10	Fine	45.8	SVAN 971 (Serial No. 96063)	Svantek SV33B (No. 83042)
	03:10	-	03:15		42.1		
	05:00	-	05:05		44.1		
22 Nov 2021	12:58	-	13:28	Fine	59.9	SVAN 971 (Serial No. 96062)	Svantek SV33B (No. 83042)
22 Nov 2021	19:03	-	19:08	Fine	46.4	SVAN 971 (Serial No. 96062)	Svantek SV33B (No. 83042)
	20:13	-	20:18		46.2		
	21:18	-	21:23		49.0		
23 Nov 2021	01:08	-	01:13	Fine	44.4	SVAN 971 (Serial No. 96062)	Svantek SV33B (No. 83042)
	03:28	-	03:33		43.9		
	05:18	-	05:23		43.8		
29 Nov 2021	14:09	-	14:39	Sunny	61.9	SVAN 971 (Serial No. 96062)	Svantek SV33B (No. 83042)

Date	Start time		End time	Weather	L_{eq 30min} dB(A) / L_{eq 5min} dB(A)	Sound Level Meter Used	Calibrator Used
29 Nov 2021	19:24	-	19:29	Fine	50.1	SVAN 971 (Serial No. 96062)	Svantek SV33B (No. 83042)
	20:19	-	20:24		51.2		
	21:29	-	21:34		48.8		
30 Nov 2021	01:09	-	01:14	Fine	45.8	SVAN 971 (Serial No. 96062)	Svantek SV33B (No. 83042)
	03:19	-	03:24		46.5		
	05:09	-	05:14		46.5		

Location: Shek Kwu Chau Treatment & Rehabilitation Centre Hostel 2 (M2 / N_S2)

Monitoring date: 2, 9, 15, 22, 29 November 2021 (Daytime)

2&3, 9&10, 15&16, 22&23, 29&30 November 2021 (Evening & Night time)

Parameter : $L_{eq\ 30min}$ (Daytime), $L_{eq\ 5min}$ (Evening & Night time)

Noise source other than construction activities from the Project: Nil

Noise Monitoring Data:

Date	Start time		End time	Weather	$L_{eq\ 30min}$ dB(A) / $L_{eq\ 5min}$ dB(A)	Sound Level Meter Used	Calibrator Used
2 Nov 2021	13:25	-	13:55	Sunny	57.8	SVAN 971 (Serial No. 96062)	Svantek SV33B (No. 83042)
2 Nov 2021	19:15	-	19:20	Fine	50.5	SVAN 971 (Serial No. 96062)	Svantek SV33B (No. 83042)
	20:25	-	20:30		51.7		
	21:40	-	21:45		50.0		
3 Nov 2021	01:25	-	01:30	Fine	46.8	SVAN 971 (Serial No. 96062)	Svantek SV33B (No. 83042)
	03:30	-	03:35		48.2		
	05:25	-	05:30		48.5		
9 Nov 2021	13:05	-	13:35	Sunny	57.6	SVAN 971 (Serial No. 96063)	Svantek SV33B (No. 83042)
9 Nov 2021	19:15	-	19:20	Fine	52.6	SVAN 971 (Serial No. 96063)	Svantek SV33B (No. 83042)
	20:15	-	20:20		53.9		
	21:30	-	21:35		49.8		
10 Nov 2021	01:40	-	01:45	Fine	49.3	SVAN 971 (Serial No. 96063)	Svantek SV33B (No. 83042)
	03:15	-	03:20		54.5		
	05:30	-	05:35		51.6		
15 Nov 2021	13:04	-	13:34	Sunny	54.2	SVAN 971 (Serial No. 96062)	Svantek SV33B (No. 83042)
15 Nov 2021	19:14	-	19:19	Fine	52.2	SVAN 971 (Serial No. 96062)	Svantek SV33B (No. 83042)
	20:04	-	20:09		50.8		
	21:19	-	21:24		53.4		
16 Nov 2021	01:09	-	01:14	Fine	45.4	SVAN 971 (Serial No. 96062)	Svantek SV33B (No. 83042)
	03:19	-	03:24		45.1		
	05:09	-	05:14		47.4		
22 Nov 2021	14:22	-	14:52	Fine	61.4	SVAN 971 (Serial No. 96063)	Svantek SV33B (No. 83042)
22 Nov 2021	19:37	-	19:42	Fine	54.3	SVAN 971 (Serial No. 96063)	Svantek SV33B (No. 83042)
	20:22	-	20:27		51.8		
	22:02	-	22:07		49.6		
23 Nov 2021	01:27	-	01:32	Fine	51.9	SVAN 971 (Serial No. 96063)	Svantek SV33B (No. 83042)
	02:47	-	02:52		49.5		
	05:12	-	05:17		48.5		

Date	Start time		End time	Weather	L_{eq 30min} dB(A) / L_{eq 5min} dB(A)	Sound Level Meter Used	Calibrator Used
29 Nov 2021	13:24	-	13:54	Sunny	59.5	SVAN 971 (Serial No. 96063)	Svantek SV33B (No. 83042)
29 Nov 2021	19:04	-	19:09	Fine	52.3	SVAN 971 (Serial No. 96063)	Svantek SV33B (No. 83042)
	21:14	-	21:19		49.0		
	22:14	-	22:19		51.4		
30 Nov 2021	01:14	-	01:19	Fine	47.6	SVAN 971 (Serial No. 96063)	Svantek SV33B (No. 83042)
	03:09	-	03:14		52.9		
	04:19	-	04:24		53.7		

Location: Shek Kwu Chau Treatment & Rehabilitation Centre Hostel 3 (M3 / N_S3)

Monitoring date: 1, 8, 15, 22, 29 November 2021 (Daytime)

1&2, 8&9, 15&16, 22&23, 29&30 November 2021 (Evening & Night time)

Parameter : $L_{eq\ 30min}$ (Daytime), $L_{eq\ 5min}$ (Evening & Night time)

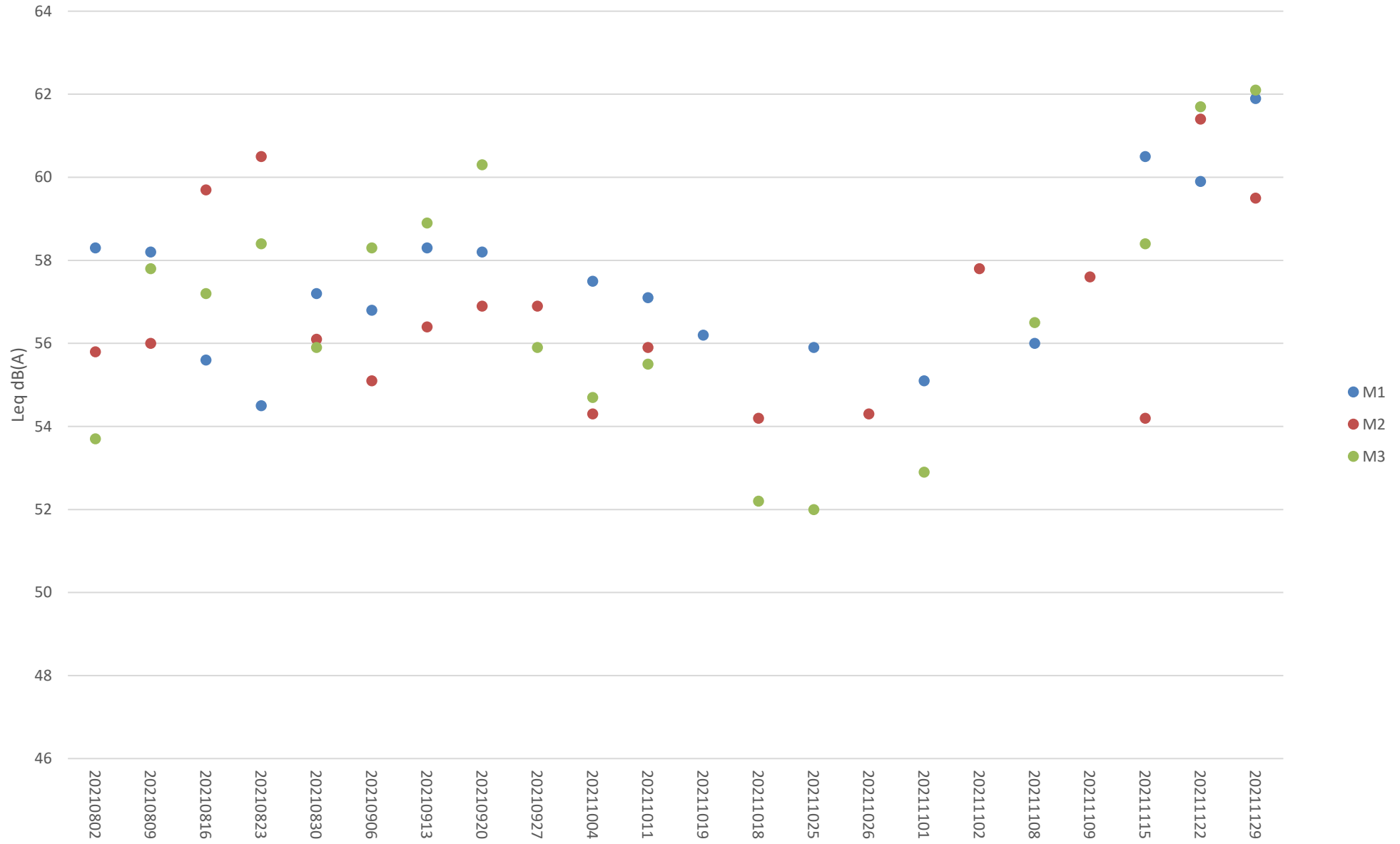
Noise source other than construction activities from the Project: Air-conditioner

Noise Monitoring data:

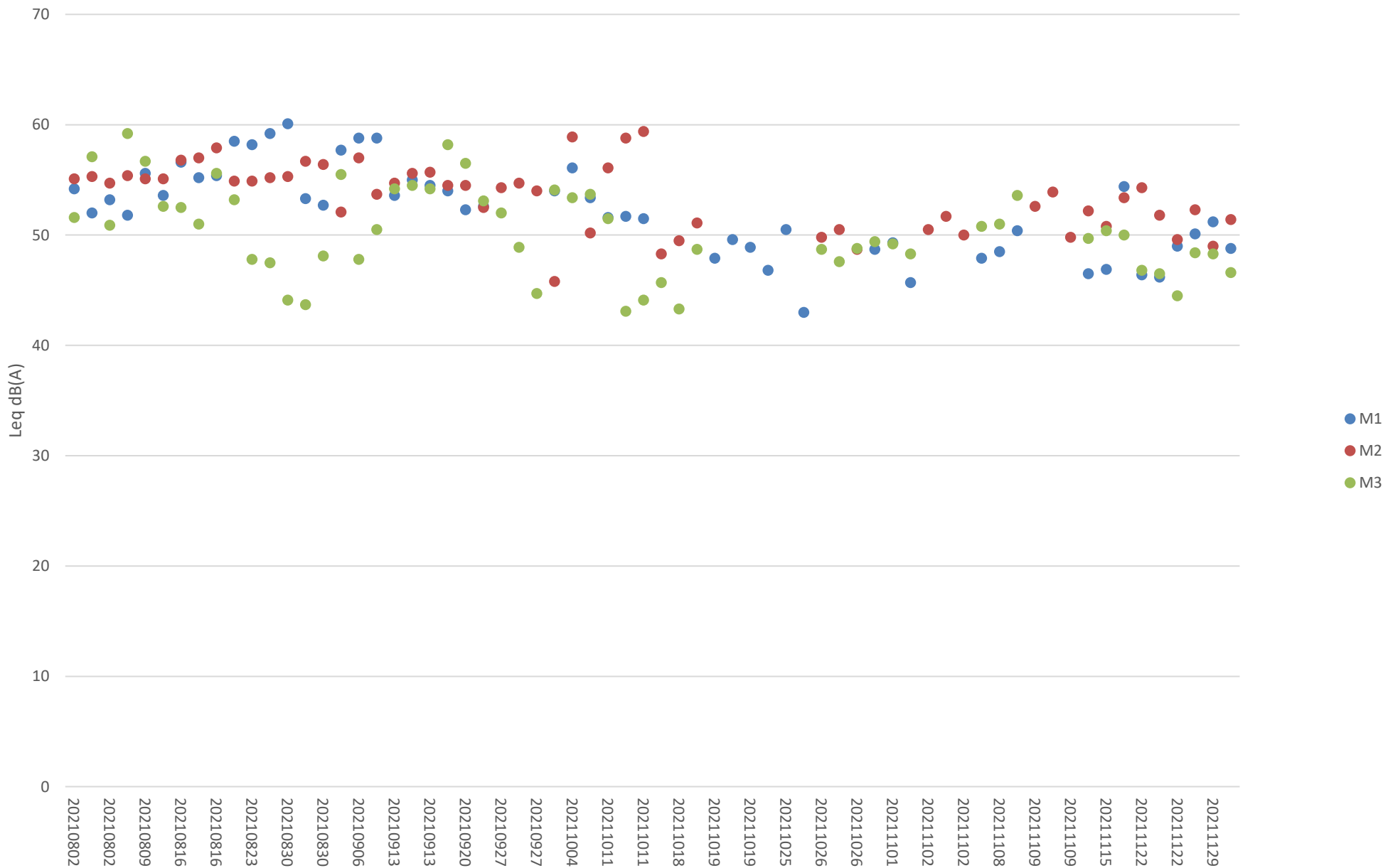
Date	Start time		End time	Weather	$L_{eq\ 30min}$ dB(A) / $L_{eq\ 5min}$ dB(A)	Sound Level Meter Used	Calibrator Used
1 Nov 2021	13:22	-	13:52	Sunny	52.9	SVAN 971 (Serial No. 96063)	Svantek SV33B (No. 83042)
1 Nov 2021	19:02	-	19:07	Fine	49.4	SVAN 971 (Serial No. 96063)	Svantek SV33B (No. 83042)
	20:27	-	20:32		49.2		
	21:12	-	21:17		48.3		
2 Nov 2021	01:22	-	01:27	Fine	52.6	SVAN 971 (Serial No. 96063)	Svantek SV33B (No. 83042)
	03:07	-	03:12		51.0		
	05:37	-	05:42		48.4		
8 Nov 2021	13:05	-	13:35	Sunny	56.5	NTi XL2 (Serial No. A2A-17638-E0)	Svantek SV33B (No. 83042)
8 Nov 2021	19:05	-	19:10	Fine	50.8	NTi XL2 (Serial No. A2A-17638-E0)	Svantek SV33B (No. 83042)
	20:15	-	20:20		51.0		
	21:20	-	21:25		53.6		
9 Nov 2021	01:20	-	01:25	Fine	49.3	NTi XL2 (Serial No. A2A-17638-E0)	Svantek SV33B (No. 83042)
	03:30	-	03:35		49.4		
	05:45	-	05:50		49.7		
15 Nov 2021	13:00	-	13:30	Sunny	58.4	NTi XL2 (Serial No. A2A-17638-E0)	Svantek SV33B (No. 83042)
15 Nov 2021	19:00	-	19:05	Fine	49.7	NTi XL2 (Serial No. A2A-17638-E0)	Svantek SV33B (No. 83042)
	20:05	-	20:10		50.4		
	21:20	-	21:25		50.0		
16 Nov 2021	01:05	-	01:10	Fine	49.6	NTi XL2 (Serial No. A2A-17638-E0)	Svantek SV33B (No. 83042)
	03:15	-	03:20		49.3		
	05:00	-	05:05		49.2		
22 Nov 2021	13:56	-	14:26	Fine	61.7	NTi XL2 (Serial No. A2A-17638-E0)	Svantek SV33B (No. 83042)
22 Nov 2021	19:06	-	19:11	Fine	46.8	NTi XL2 (Serial No. A2A-17638-E0)	Svantek SV33B (No. 83042)
	20:06	-	20:11		46.5		
	21:06	-	21:11		44.5		

Date	Start time		End time	Weather	L_{eq 30min} dB(A) / L_{eq 5min} dB(A)	Sound Level Meter Used	Calibrator Used
23 Nov 2021	01:11	-	01:16	Fine	45.1	NTi XL2 (Serial No. A2A-17638-E0)	Svantek SV33B (No. 83042)
	03:06	-	03:11		45.9		
	05:16	-	05:21		44.7		
29 Nov 2021	13:36	-	14:06	Sunny	62.1	NTi XL2 (Serial No. A2A-17638-E0)	Svantek SV33B (No. 83042)
29 Nov 2021	19:06	-	19:11	Fine	48.4	NTi XL2 (Serial No. A2A-17638-E0)	Svantek SV33B (No. 83042)
	20:06	-	20:11		48.3		
	21:21	-	21:26		46.6		
30 Nov 2021	01:11	-	01:16	Fine	42.6	NTi XL2 (Serial No. A2A-17638-E0)	Svantek SV33B (No. 83042)
	03:16	-	03:21		43.0		
	05:16	-	05:21		45.7		

Impact Noise Monitoring Results during Day Time (0700 - 1900 hours)



Additional Impact Noise Monitoring Results during Evening Time (1900 - 2300 hours)



Additional Impact Noise Monitoring Results during Night Time (2300 - 0700 hours)

