

Appendix J Noise Monitoring Data

Location: Shek Kwu Chau Treatment & Rehabilitation Centre Hostel 1 (M1 / N_S1)

Monitoring date: 4, 11, 19, 25 October 2021 (Daytime)
4&5, 11&12, 19&20, 25&26 October 2021 (Evening & Night time)

Parameter : $L_{eq\ 30min}$ (Daytime), $L_{eq\ 5min}$ (Evening & Night time)

Noise source other than Nil
construction activities from
the Project:

Noise Monitoring Data:

Date	Start time		End time	Weather	$L_{eq\ 30min}$ dB(A) / $L_{eq\ 5min}$ dB(A)	Sound Level Meter Used	Calibrator Used
4 Oct 2021	14:11	-	14:41	Fine	57.5	XL2 (Serial No. A2A-13548-E0)	Svantek SV33B (No. 83042)
4 Oct 2021	19:11	-	19:16	Fine	54.0	XL2 (Serial No. A2A-13548-E0)	Svantek SV33B (No. 83042)
	20:16	-	20:21		56.1		
	21:31	-	21:36		53.4		
5 Oct 2021	01:11	-	01:16	Fine	53.2	XL2 (Serial No. A2A-13548-E0)	Svantek SV33B (No. 83042)
	03:21	-	03:26		52.3		
	05:31	-	05:36		53.2		
11 Oct 2021	14:07	-	14:37	Cloudy	57.1	XL2 (Serial No. A2A-13548-E0)	Svantek SV33B (No. 83042)
11 Oct 2021	19:17	-	19:22	Fine	51.6	XL2 (Serial No. A2A-13548-E0)	Svantek SV33B (No. 83042)
	20:17	-	20:22		51.7		
	21:32	-	21:37		51.5		
12 Oct 2021	01:37	-	01:42	Fine	55.1	XL2 (Serial No. A2A-13548-E0)	Svantek SV33B (No. 83042)
	03:32	-	03:37		54.3		
	05:27	-	05:32		50.0		
19 Oct 2021	13:34	-	14:04	Sunny	56.2	SVAN 971 (Serial No. 96063)	Svantek SV33B (No. 83042)
19 Oct 2021	19:04	-	19:09	Fine	47.9	SVAN 971 (Serial No. 96063)	Svantek SV33B (No. 83042)
	20:14	-	20:19		49.6		
	21:19	-	21:24		48.9		
20 Oct 2021	01:19	-	01:24	Fine	47.7	SVAN 971 (Serial No. 96063)	Svantek SV33B (No. 83042)
	03:14	-	03:19		45.7		
	05:04	-	05:09		45.0		
25 Oct 2021	13:33	-	14:03	Sunny	55.9	SVAN 971 (Serial No. 96062)	Svantek SV33B (No. 83042)
25 Oct 2021	19:03	-	19:08	Fine	46.8	SVAN 971 (Serial No. 96062)	Svantek SV33B (No. 83042)
	20:28	-	20:33		50.5		
	21:18	-	21:23		43.0		
26 Oct 2021	1:23	-	01:28	Fine	42.8	SVAN 971 (Serial No. 96062)	Svantek SV33B (No. 83042)
	3:18	-	03:23		43.0		
	5:13	-	05:18		45.5		

Location: Shek Kwu Chau Treatment & Rehabilitation Centre Hostel 2 (M2 / N_S2)

Monitoring date: 4, 11, 18, 26 October 2021 (Daytime)
 4&5, 11&12, 18&19, 26&27 October 2021 (Evening & Night time)

Parameter : $L_{eq\ 30min}$ (Daytime), $L_{eq\ 5min}$ (Evening & Night time)

Noise source other than Nil
 construction activities from
 the Project:

Noise Monitoring Data:

Date	Start time		End time	Weather	$L_{eq\ 30min}$ dB(A) / $L_{eq\ 5min}$ dB(A)	Sound Level Meter Used	Calibrator Used
4 Oct 2021	13:10	-	13:40	Fine	55.4	SVAN 971 (Serial No. 96063)	Svantek SV33B (No. 83042)
4 Oct 2021	19:10	-	19:15	Fine	54.1	SVAN 971 (Serial No. 96063)	Svantek SV33B (No. 83042)
	20:10	-	20:15		55.3		
	21:10	-	21:15		52.9		
5 Oct 2021	01:10	-	01:15	Fine	51.4	SVAN 971 (Serial No. 96063)	Svantek SV33B (No. 83042)
	03:10	-	03:15		49.8		
	05:40	-	05:45		51.2		
11 Oct 2021	13:27	-	13:57	Cloudy	55.9	SVAN 971 (Serial No. 96062)	Svantek SV33B (No. 83042)
11 Oct 2021	19:32	-	19:37	Fine	56.1	SVAN 971 (Serial No. 96062)	Svantek SV33B (No. 83042)
	20:32	-	20:37		58.8		
	22:22	-	22:27		56.0		
12 Oct 2021	04:22	-	04:27	Fine	55.2	SVAN 971 (Serial No. 96062)	Svantek SV33B (No. 83042)
	04:57	-	05:02		57.8		
	05:17	-	05:22		53.0		
18 Oct 2021	13:09	-	13:39	Sunny	54.2	SVAN 971 (Serial No. 96062)	Svantek SV33B (No. 83042)
18 Oct 2021	19:04	-	19:09	Fine	48.3	SVAN 971 (Serial No. 96062)	Svantek SV33B (No. 83042)
	20:19	-	20:24		49.5		
	21:34	-	21:39		51.1		
19 Oct 2021	1:39	-	01:44	Fine	47.5	SVAN 971 (Serial No. 96062)	Svantek SV33B (No. 83042)
	3:24	-	03:29		47.8		
	5:14	-	05:19		48.0		
26 Oct 2021	13:18	-	13:23	Sunny	54.3	SVAN 971 (Serial No. 96062)	Svantek SV33B (No. 83042)
26 Oct 2021	19:03	-	19:08	Fine	49.8	SVAN 971 (Serial No. 96062)	Svantek SV33B (No. 83042)
	20:13	-	20:18		50.5		
	21:23	-	21:28		48.7		
27 Oct 2021	1:18	-	01:23	Fine	47.3	SVAN 971 (Serial No. 96062)	Svantek SV33B (No. 83042)
	3:23	-	03:28		49.0		
	5:18	-	05:23		48.0		

Location: Shek Kwu Chau Treatment & Rehabilitation Centre Hostel 3 (M3 / N_S3)

Monitoring date: 4, 11, 18, 25 October 2021 (Daytime)
 4&5, 11&12, 18&19, 25&26 October 2021 (Evening & Night time)

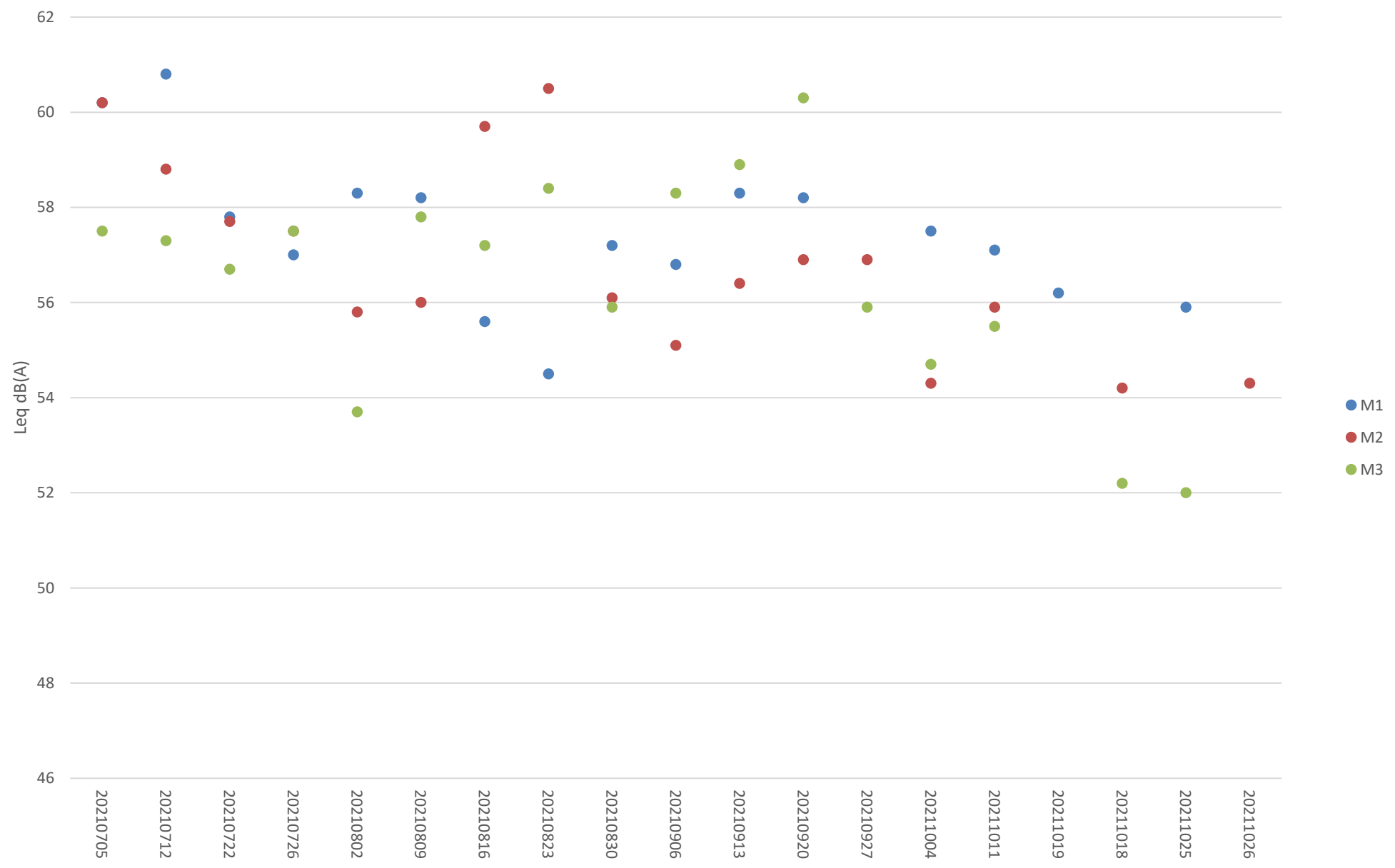
Parameter : $L_{eq\ 30min}$ (Daytime), $L_{eq\ 5min}$ (Evening & Night time)

Noise source other than construction activities from the Project: Air-conditioner

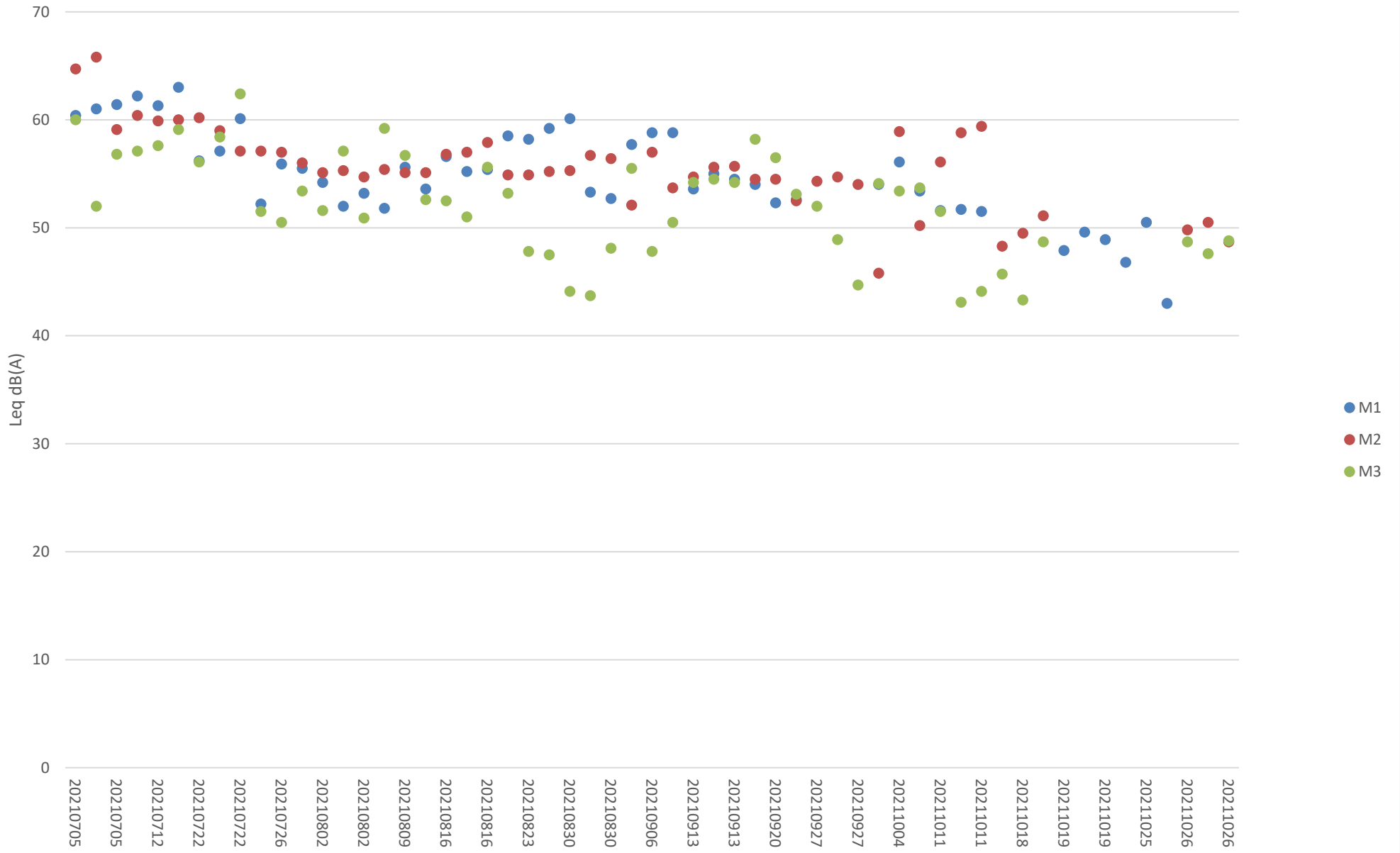
Noise Monitoring data:

Date	Start time		End time	Weather	$L_{eq\ 30min\ dB(A)} / L_{eq\ 5min\ dB(A)}$	Sound Level Meter Used	Calibrator Used
4 Oct 2021	14:26	-	14:56	Fine	55.2	SVAN 971 (Serial No. 96062)	Svantek SV33B (No. 83042)
4 Oct 2021	19:11	-	19:16	Fine	45.2	SVAN 971 (Serial No. 96062)	Svantek SV33B (No. 83042)
	20:11	-	20:16		58.9		
	21:31	-	21:36		53.7		
5 Oct 2021	01:21	-	01:26	Fine	53.1	SVAN 971 (Serial No. 96062)	Svantek SV33B (No. 83042)
	02:56	-	03:01		48.3		
	05:46	-	05:51		45.1		
11 Oct 2021	14:04	-	14:34	Cloudy	55.5	SVAN 971 (Serial No. 96063)	Svantek SV33B (No. 83042)
11 Oct 2021	19:14	-	19:19	Fine	51.5	SVAN 971 (Serial No. 96063)	Svantek SV33B (No. 83042)
	20:09	-	20:14		43.1		
	21:24	-	21:27		44.1		
12 Oct 2021	01:09	-	01:14	Fine	55.0	SVAN 971 (Serial No. 96063)	Svantek SV33B (No. 83042)
	03:14	-	03:19		47.4		
	05:14	-	05:19		43.6		
18 Oct 2021	13:25	-	13:55	Sunny	52.2	SVAN 971 (Serial No. 96063)	Svantek SV33B (No. 83042)
18 Oct 2021	19:10	-	19:15	Fine	45.7	SVAN 971 (Serial No. 96063)	Svantek SV33B (No. 83042)
	20:15	-	20:20		43.3		
	21:15	-	21:20		48.7		
19 Oct 2021	1:15	-	01:20	Fine	44.2	SVAN 971 (Serial No. 96063)	Svantek SV33B (No. 83042)
	3:30	-	03:35		42.1		
	5:25	-	05:30		43.4		
25 Oct 2021	13:20	-	13:50	Sunny	52.0	SVAN 971 (Serial No. 96063)	Svantek SV33B (No. 83042)
25 Oct 2021	19:20	-	19:25	Fine	48.7	SVAN 971 (Serial No. 96063)	Svantek SV33B (No. 83042)
	20:25	-	20:30		47.6		
	21:30	-	21:35		48.8		
26 Oct 2021	1:35	-	1:40	Fine	50.3	SVAN 971 (Serial No. 96063)	Svantek SV33B (No. 83042)
	3:15	-	3:20		43.0		
	5:35	-	5:40		44.2		

Impact Noise Monitoring Results during Day Time (0700 - 1900 hours)



Additional Impact Noise Monitoring Results during Evening Time (1900 - 2300 hours)



Additional Impact Noise Monitoring Results during Night Time (2300 - 0700 hours)

