

## Appendix J Noise Monitoring Data

Location: Shek Kwu Chau Treatment & Rehabilitation Centre Hostel 1 (M1 / N\_S1)

Monitoring date: 2, 9, 16, 23, 30 August 2021 (Daytime)

2&3, 9&10, 16&17, 23&24, 30&31 August 2021 (Evening & Night time)

Parameter :  $L_{eq\ 30min}$  (Daytime),  $L_{eq\ 5min}$  (Evening & Night time)

Noise source other than construction activities from the Project: Nil

Noise Monitoring Data:

Date	Start time		End time	Weather	$L_{eq\ 30min}$ dB(A) / $L_{eq\ 5min}$ dB(A)	Sound Level Meter Used	Calibrator Used
2 Aug 2021	16:02	-	16:32	Fine	58.3	XL2 (Serial No. A2A-13661-E0)	Svantek SV33B (No. 83042)
2 Aug 2021	19:02	-	19:07	Fine	54.2	XL2 (Serial No. A2A-13661-E0)	Svantek SV33B (No. 83042)
	20:02	-	20:07		52.0		
	21:02	-	21:07		53.2		
3 Aug 2021	01:02	-	01:07	Fine	51.9	XL2 (Serial No. A2A-13661-E0)	Svantek SV33B (No. 83042)
	03:02	-	03:07		49.3		
	05:02	-	05:07		49.6		
9 Aug 2021	16:00	-	16:30	Sunny	58.2	XL2 (Serial No. A2A-13661-E0)	Svantek SV33B (No. 83042)
9 Aug 2021	19:00	-	19:05	Fine	51.8	XL2 (Serial No. A2A-13661-E0)	Svantek SV33B (No. 83042)
	20:00	-	20:05		55.6		
	21:00	-	21:05		53.6		
10 Aug 2021	01:00	-	01:05	Fine	53.1	XL2 (Serial No. A2A-13661-E0)	Svantek SV33B (No. 83042)
	03:00	-	03:05		52.6		
	05:50	-	05:55		51.8		
16 Aug 2021	16:03	-	16:33	Fine	55.6	XL2 (Serial No. A2A-13661-E0)	Svantek SV33B (No. 83042)
16 Aug 2021	19:03	-	19:08	Fine	56.6	XL2 (Serial No. A2A-13661-E0)	Svantek SV33B (No. 83042)
	20:23	-	20:28		55.2		
	21:43	-	21:48		55.4		
17 Aug 2021	01:03	-	01:09	Fine	48.9	XL2 (Serial No. A2A-13661-E0)	Svantek SV33B (No. 83042)
	03:18	-	03:23		54.0		
	06:13	-	06:18		53.9		
23 Aug 2021	16:05	-	16:35	Sunny	54.5	XL2 (Serial No. A2A-13661-E0)	Svantek SV33B (No. 83042)
23 Aug 2021	19:27	-	19:32	Fine	59.6	XL2 (Serial No. A2A-13661-E0)	Svantek SV33B (No. 83042)
	20:05	-	20:10		58.2		
	21:10	-	21:15		59.2		
24 Aug 2021	01:10	-	01:15	Fine	50.0	XL2 (Serial No. A2A-13661-E0)	Svantek SV33B (No. 83042)
	03:20	-	03:25		50.0		
	05:05	-	05:10		45.7		

<b>Date</b>	<b>Start time</b>		<b>End time</b>	<b>Weather</b>	<b>L<sub>eq</sub> 30min dB(A) / L<sub>eq</sub> 5min dB(A)</b>	<b>Sound Level Meter Used</b>	<b>Calibrator Used</b>
30 Aug 2021	16:12	-	16:42	Sunny	57.2	XL2 (Serial No. A2A-13661-E0)	Svantek SV33B (No. 83042)
30 Aug 2021	19:27	-	19:32	Fine	59.6	XL2 (Serial No. A2A-13661-E0)	Svantek SV33B (No. 83042)
	20:17	-	20:22		53.3		
	21:02	-	21:07		52.7		
31 Aug 2021	01:02	-	01:07	Fine	44.7	XL2 (Serial No. A2A-13661-E0)	Svantek SV33B (No. 83042)
	03:22	-	03:27		44.7		
	05:07	-	05:12		46.5		

Location: Shek Kwu Chau Treatment & Rehabilitation Centre Hostel 2 (M2 / N\_S2)

Monitoring date: 2, 9, 16, 23, 30 August 2021 (Daytime)

2&3, 9&10, 16&17, 23&24, 30&31 August 2021 (Evening & Night time)

Parameter :  $L_{eq\ 30min}$  (Daytime),  $L_{eq\ 5min}$  (Evening & Night time)

Noise source other than construction activities from the Project: Nil

Noise Monitoring Data:

Date	Start time		End time	Weather	$L_{eq\ 30min}$ dB(A) / $L_{eq\ 5min}$ dB(A)	Sound Level Meter Used	Calibrator Used
2 Aug 2021	13:34	-	14:04	Fine	55.8	SVAN 971 (Serial No. 96062)	Svantek SV33B (No. 83042)
2 Aug 2021	19:44	-	19:49	Fine	55.1	SVAN 971 (Serial No. 96062)	Svantek SV33B (No. 83042)
	20:14	-	20:19		55.3		
	21:14	-	21:19		54.7		
3 Aug 2021	01:29	-	01:34	Fine	52.3	SVAN 971 (Serial No. 96062)	Svantek SV33B (No. 83042)
	03:29	-	03:34		51.1		
	05:04	-	05:09		52.8		
9 Aug 2021	14:06	-	14:36	Sunny	56.0	SVAN 971 (Serial No. 96062)	Svantek SV33B (No. 83042)
9 Aug 2021	19:06	-	19:11	Fine	55.4	SVAN 971 (Serial No. 96062)	Svantek SV33B (No. 83042)
	20:41	-	20:46		55.1		
	21:51	-	21:56		55.1		
10 Aug 2021	01:06	-	01:11	Fine	51.9	SVAN 971 (Serial No. 96062)	Svantek SV33B (No. 83042)
	03:06	-	03:11		51.5		
	05:26	-	05:31		55.5		
16 Aug 2021	14:13	-	14:43	Fine	59.7	SVAN 971 (Serial No. 96063)	Svantek SV33B (No. 83042)
16 Aug 2021	19:18	-	19:23	Fine	56.8	SVAN 971 (Serial No. 96063)	Svantek SV33B (No. 83042)
	20:28	-	20:33		57.0		
	21:13	-	21:18		57.9		
17 Aug 2021	01:23	-	01:28	Fine	54.9	SVAN 971 (Serial No. 96063)	Svantek SV33B (No. 83042)
	02:03	-	02:08		55.2		
	02:43	-	02:48		53.8		
23 Aug 2021	13:26	-	13:56	Sunny	60.5	SVAN 971 (Serial No. 96063)	Svantek SV33B (No. 83042)
23 Aug 2021	19:21	-	19:26	Fine	54.9	SVAN 971 (Serial No. 96063)	Svantek SV33B (No. 83042)
	20:11	-	20:16		54.9		
	21:01	-	21:06		55.2		
24 Aug 2021	01:01	-	01:06	Fine	56.4	SVAN 971 (Serial No. 96063)	Svantek SV33B (No. 83042)
	03:11	-	03:16		54.3		
	05:21	-	05:26		56.6		

<b>Date</b>	<b>Start time</b>		<b>End time</b>	<b>Weather</b>	<b>L<sub>eq 30min</sub> dB(A) / L<sub>eq 5min</sub> dB(A)</b>	<b>Sound Level Meter Used</b>	<b>Calibrator Used</b>
30 Aug 2021	15:45	-	16:15	Sunny	55.1	SVAN 971 (Serial No. 96063)	Svantek SV33B (No. 83042)
30 Aug 2021	19:15	-	19:20	Fine	55.3	SVAN 971 (Serial No. 96063)	Svantek SV33B (No. 83042)
	20:05	-	20:10		56.7		
	21:00	-	21:05		56.4		
31 Aug 2021	02:10	-	02:15	Fine	58.3	SVAN 971 (Serial No. 96063)	Svantek SV33B (No. 83042)
	04:35	-	04:40		57.6		
	05:05	-	05:10		54.8		

Location: Shek Kwu Chau Treatment & Rehabilitation Centre Hostel 3 (M3 / N\_S3)

Monitoring date: 2, 9, 16, 23, 30 August 2021 (Daytime)

2&3, 9&10, 16&17, 23&24, 30&31 August 2021 (Evening & Night time)

Parameter :  $L_{eq\ 30min}$  (Daytime),  $L_{eq\ 5min}$  (Evening & Night time)

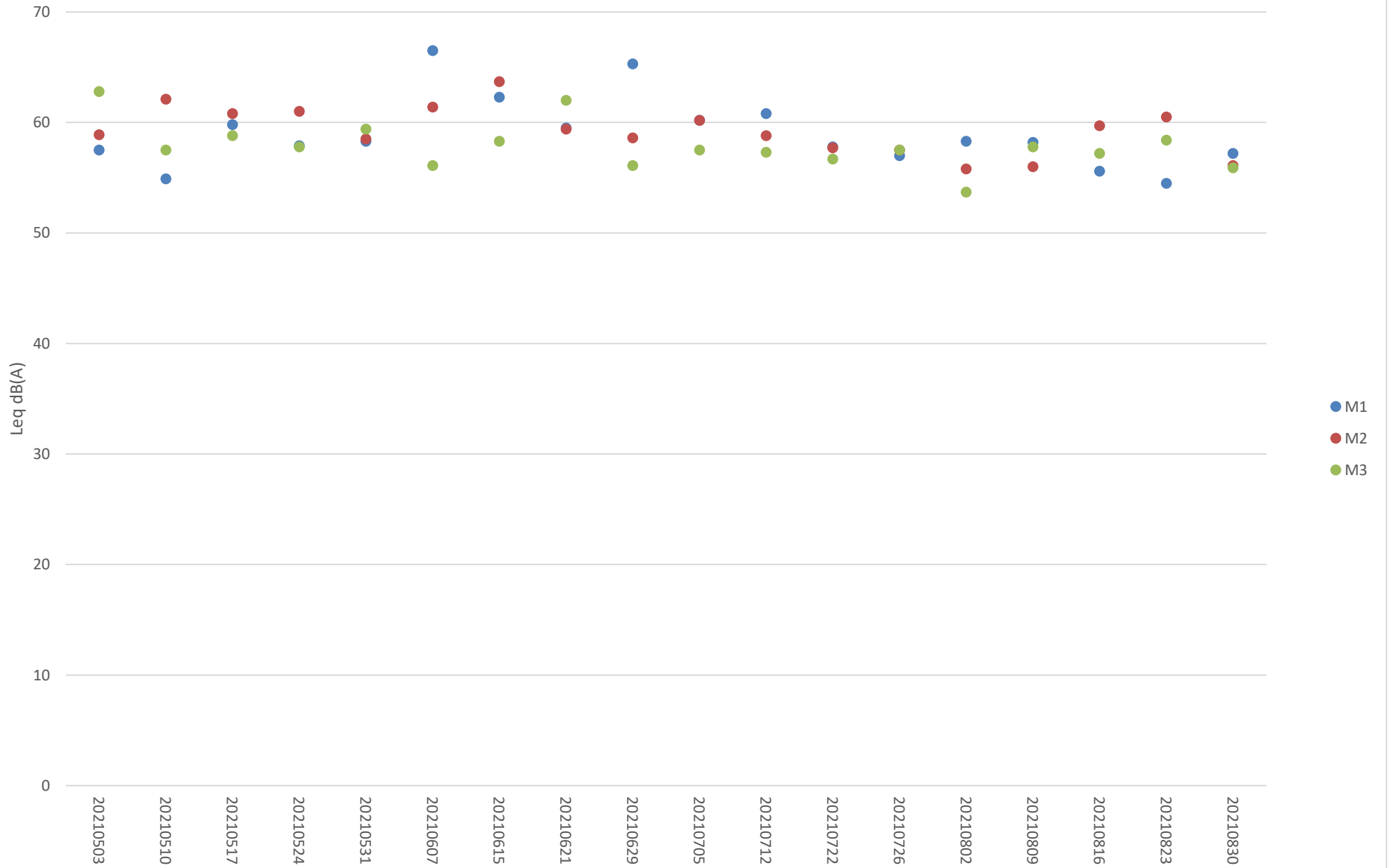
Noise source other than construction activities from the Project: Air-conditioner

Noise Monitoring data:

Date	Start time		End time	Weather	$L_{eq\ 30min}$ dB(A) / $L_{eq\ 5min}$ dB(A)	Sound Level Meter Used	Calibrator Used
2 Aug 2021	13:18	-	13:48	Fine	53.7	SVAN 971 (Serial No. 96063)	Svantek SV33B (No. 83042)
2 Aug 2021	19:03	-	19:08	Fine	51.6	SVAN 971 (Serial No. 96063)	Svantek SV33B (No. 83042)
	20:18	-	20:23		57.1		
	21:08	-	21:13		50.9		
3 Aug 2021	01:03	-	01:08	Fine	55.3	SVAN 971 (Serial No. 96063)	Svantek SV33B (No. 83042)
	01:33	-	01:38		56.2		
	03:28	-	03:33		45.1		
9 Aug 2021	16:20	-	16:52	Sunny	57.8	SVAN 971 (Serial No. 96063)	Svantek SV33B (No. 83042)
9 Aug 2021	19:02	-	19:07	Fine	59.2	SVAN 971 (Serial No. 96063)	Svantek SV33B (No. 83042)
	20:22	-	20:27		56.7		
	21:27	-	21:32		52.6		
10 Aug 2021	01:07	-	01:12	Fine	47.6	SVAN 971 (Serial No. 96063)	Svantek SV33B (No. 83042)
	03:37	-	03:42		46.9		
	06:12	-	06:17		54.0		
16 Aug 2021	15:14	-	15:44	Fine	57.2	SVAN 971 (Serial No. 96062)	Svantek SV33B (No. 83042)
16 Aug 2021	19:29	-	19:34	Fine	52.5	SVAN 971 (Serial No. 96062)	Svantek SV33B (No. 83042)
	20:39	-	20:44		51.0		
	21:14	-	21:19		55.6		
17 Aug 2021	01:09	-	01:14	Fine	55.7	SVAN 971 (Serial No. 96062)	Svantek SV33B (No. 83042)
	03:09	-	03:14		51.0		
	05:04	-	05:09		57.1		
23 Aug 2021	16:00	-	16:30	Sunny	58.4	SVAN 971 (Serial No. 96062)	Svantek SV33B (No. 83042)
23 Aug 2021	19:00	-	19:05	Fine	53.2	SVAN 971 (Serial No. 96062)	Svantek SV33B (No. 83042)
	20:10	-	20:15		47.8		
	21:30	-	21:35		47.5		
24 Aug 2021	01:05	-	01:10	Fine	42.0	SVAN 971 (Serial No. 96062)	Svantek SV33B (No. 83042)
	03:25	-	03:30		41.5		
	05:05	-	05:10		45.2		

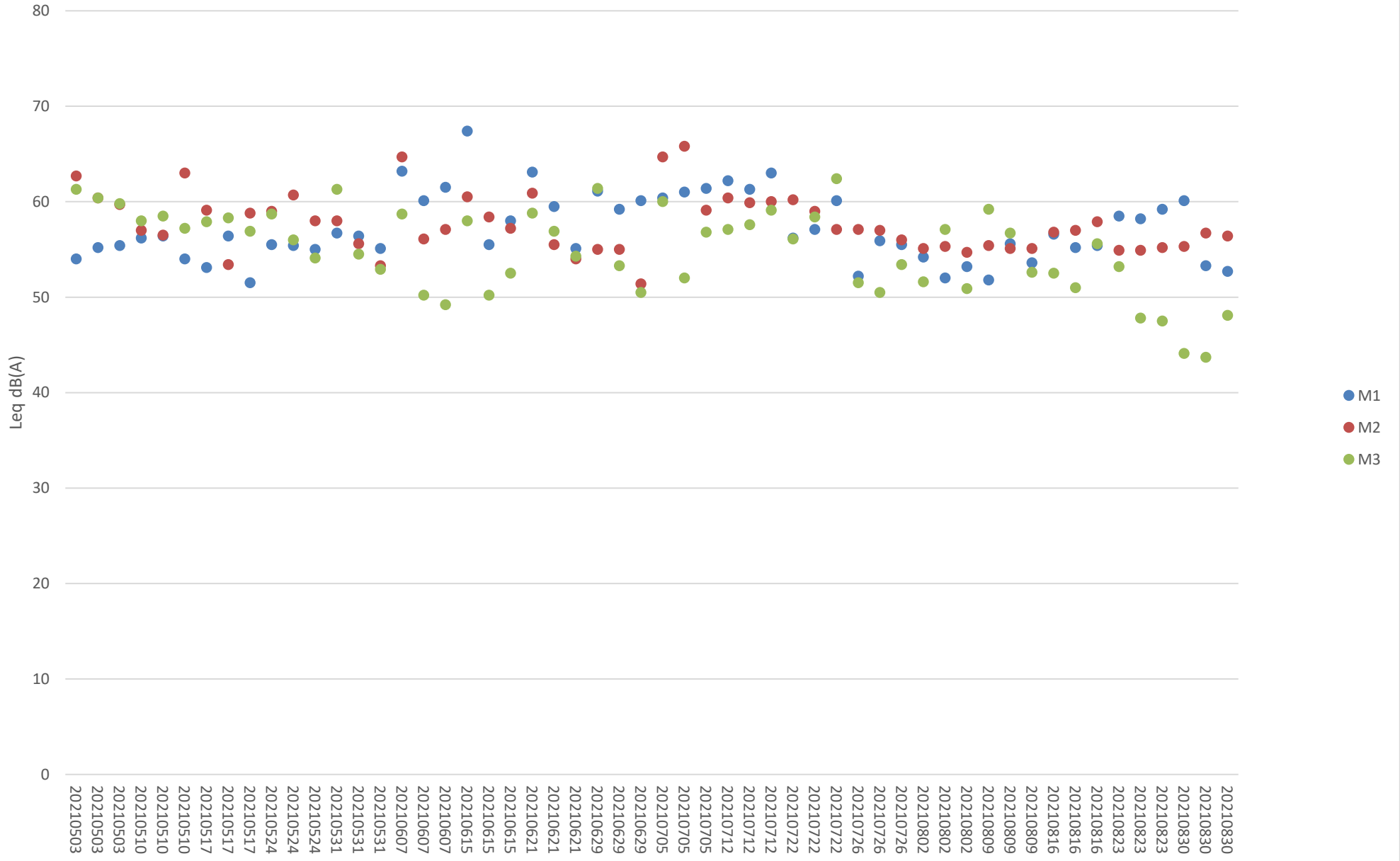
<b>Date</b>	<b>Start time</b>		<b>End time</b>	<b>Weather</b>	<b>L<sub>eq 30min</sub> dB(A) / L<sub>eq 5min</sub> dB(A)</b>	<b>Sound Level Meter Used</b>	<b>Calibrator Used</b>
30 Aug 2021	15:20	-	15:50	Sunny	55.9	SVAN 971 (Serial No. 96062)	Svantek SV33B (No. 83042)
30 Aug 2021	19:15	-	19:20	Fine	44.1	SVAN 971 (Serial No. 96062)	Svantek SV33B (No. 83042)
	20:15	-	20:20		43.7		
	21:10	-	21:15		48.1		
31 Aug 2021	01:05	-	01:10	Fine	49.0	SVAN 971 (Serial No. 96062)	Svantek SV33B (No. 83042)
	03:10	-	03:15		52.3		
	05:00	-	05:05		48.8		

### Impact Noise Monitoring Results during Day Time (0700 - 1900 hours)





# Additional Impact Noise Monitoring Results during Evening Time (1900 - 2300 hours)



# Additional Impact Noise Monitoring Results during Night Time (2300 - 0700 hours)

