

Appendix A Master Programme

| Activity ID | Activity Name | Original Duration | At Completion Duration | Duration % Complete | Activity % Complete | Remaining Duration | Primary Constraint | Current Start | Current Finish | Late Start | Late Finish | Total Float | M44 Remarks | 2021 | | | | |
|---|---|-------------------|------------------------|---------------------|---------------------|--------------------|---------------------|---------------|----------------|------------|-------------|-------------|-------------|--------|--------|--------|---|--|
| | | | | | | | | | | | | | | Jul 44 | Aug 45 | Sep 46 | Oct 47 | |
| EP_SP_66_12-WP6A-M44 Programme for Design and Construction Works WP6A-M44 | | | | | | | | | | | | | | | | | | |
| EP_SP_66_12-WP6A-M44.01 Key Dates | | | | | | | | | | | | | | | | | | |
| EP_SP_66_12-WP6A-M44.01.1 Contractual Key Dates | | | | | | | | | | | | | | | | | | |
| EP_SP_66_12-WP6A-M44.01.1.1 Design and Construction Phase | | | | | | | | | | | | | | | | | | |
| 01-1000 | Contract Award/Date of Acceptance of Tender | 0 | 0 | 100% | 100% | 0 | Mandatory Start | 22-Nov-17 A | | | | | | | | | | |
| 01-1010 | Date of Commencement of the Design and the Works | 0 | 0 | 100% | 100% | 0 | Mandatory Start | 15-Dec-17 A | | | | | | | | | | |
| 01-1015(3)(M12) | Original Substantial Completion of the Works | 0 | 0 | 0% | 0% | 0 | Mandatory Finish | | 27-Jul-24* | | 27-Jul-24 | 0 | | | | | | |
| 01-1020 | Extended Substantial Completion of The Works | 0 | 0 | 0% | 0% | 0 | | | 21-May-25 | | 21-May-25 | 0 | | | | | | |
| EP_SP_66_12-WP6A-M44.01.1.3 Extension of Time Granted | | | | | | | | | | | | | | | | | | |
| 01-1015-1(3)(M12) | Extension of time granted (Claim No.1 to No.53) *Claim No.9 excluded | 298 | 298 | 0% | 0% | 298 | | 27-Jul-24 | 21-May-25 | 27-Jul-24 | 21-May-25 | 0 | | | | | | |
| EP_SP_66_12-WP6A-M44.01.1.2 Operation Phase | | | | | | | | | | | | | | | | | | |
| 01-1030 | Commencement of Operation | 0 | 0 | 0% | 0% | 0 | Mandatory Start | 22-May-25* | | 22-May-25 | | 0 | | | | | | |
| 01-1230 | Issue Certificate of Completion of the Works (56 days after Substantial Completion) | 0 | 0 | 0% | 0% | 0 | Finish On or Before | | 16-Jul-25* | | 16-Jul-25 | 0 | | | | | | |
| EP_SP_66_12-WP6A-M44.01.2 Planned Completion Dates | | | | | | | | | | | | | | | | | | |
| 01-1030(5a) | Grid Connection Agreement (GCA) | 0 | 0 | 0% | 0% | 0 | Finish On | | 31-Oct-24* | | 30-Oct-24 | 0 | | | | | | |
| 01-1040 | Incoming Power Energization to IWMF Substation | 0 | 0 | 0% | 0% | 0 | Finish On | | 03-Nov-24* | | 30-Oct-24 | -3 | | | | | | |
| 01-1050 | Export Power to Grid | 0 | 0 | 0% | 0% | 0 | Finish On or After | | 15-Dec-24* | | 27-Dec-24 | 12 | | | | | | |
| 01-1060 | Issuance of FS Certificate | 0 | 0 | 0% | 0% | 0 | | | 18-Sep-24 | | 16-Oct-24 | 28 | | | | | | |
| 01-1070 | Completion of Civil Provision for Transmission | 0 | 0 | 0% | 0% | 0 | | 28-Mar-23 | | 20-Mar-23 | -8 | | | | | | | |
| 01-1080 | Commencement of C1.3.4.11 System Commissioning Test | 0 | 0 | 0% | 0% | 0 | | 18-Oct-24 | | 17-Oct-24 | -1 | | | | | | | |
| 01-1090 | Completion of C1.3.4.11 System Commission Test | 0 | 0 | 0% | 0% | 0 | | | 30-Dec-24 | | 13-Dec-24 | -17 | | | | | | |
| 01-1100 | Physical Completion of 90 Days Plant Commissioning Test Works | 0 | 0 | 0% | 0% | 0 | Finish On or Before | | 18-May-25* | | 27-Mar-25 | -52 | | | | | | |
| 01-1110(3)(M15) | Planned Substantial Completion of the Works | 0 | 0 | 0% | 0% | 0 | | | 12-Jul-25 | | 21-May-25 | -52 | | | | | | |
| 01-1110-1(5a) | Completion of 180 Days for Installation, T&C of CCTV System and Onshore Power System at Portion 2 | 0 | 0 | 0% | 0% | 0 | Finish On or Before | | 17-Nov-25* | | 17-Nov-25 | 0 | | | | | | |
| 01-1110-2(5a) | Replacement of Onshore Cranes within 2 yrs at Portion 2 | 0 | 0 | 0% | 0% | 0 | Finish On or Before | | 21-May-27* | | 21-May-27 | 0 | | | | | | |
| EP_SP_66_12-WP6A-M44.01.3 Dates of Site Possessions | | | | | | | | | | | | | | | | | | |
| 01-1120 | Possession of Portion 1 | 0 | 0 | 100% | 100% | 0 | | | 15-Dec-17 A | | | | | | | | | |
| 01-1130 | Possession of Portion 1A | 0 | 0 | 100% | 100% | 0 | | | 15-Dec-17 A | | | | | | | | | |
| 01-1140 | Possession of Portion 1B | 0 | 0 | 100% | 100% | 0 | | | 15-Dec-17 A | | | | | | | | | |
| 01-1150 | Possession of Portion 2 | 0 | 0 | 0% | 0% | 0 | Start On or Before | 22-May-25* | | 22-May-25 | 0 | | | | | | | |
| 01-1160 | Possession of Portion 3 | 0 | 0 | 0% | 0% | 0 | As Late As Possible | | 07-Nov-22 | | 30-Jan-23 | 84 | | | | | | |
| 01-1170 | Possession of Portion 4 | 0 | 0 | 0% | 0% | 0 | As Late As Possible | | 07-Nov-22 | | 30-Jan-23 | 84 | | | | | | |
| 01-1180 | Possession of Portion 5 | 0 | 0 | 0% | 0% | 0 | As Late As Possible | | 07-Nov-22 | | 30-Jan-23 | 84 | | | | | | |
| 01-1190 | Possession of Portion 6 | 0 | 0 | 0% | 0% | 0 | Start On or Before | 23-Jul-24* | | 01-Jun-24 | -52 | | | | | | | |
| 01-1200 | Possession of Portion 7 | 0 | 0 | 100% | 100% | 0 | Finish On or Before | | 05-Jan-18 A | | | | | | | | | |
| 01-1210 | Possession of Portion 7A | 0 | 0 | 100% | 100% | 0 | Finish On or Before | | 07-Dec-18 A | | | | | | | | | |
| 01-1210(5a) | Possession of Portion 8 | 0 | 0 | 100% | 100% | 0 | Start On | 29-Apr-20 A | | | | | | | | | | |
| EP_SP_66_12-WP6A-M44.02 Contract Preliminaries | | | | | | | | | | | | | | | | | | |
| EP_SP_66_12-WP6A-M44.02.3 Erection of Concrete Batching Plant on Artificial Island | | | | | | | | | | | | | | | | | | |
| 02-1090 | Commissioning of Concrete Batching Plant | 0 | 0 | 0% | 0% | 0 | Finish On or Before | | 31-Jul-21* | | 01-Aug-21 | 2 | | | | | Commissioning of Concrete Batching Plant, | |
| EP_SP_66_12-WP6A-M44.02.4 Establishment of Public Relation Office | | | | | | | | | | | | | | | | | | |
| EP_SP_66_12-WP6A-M44.02.4.2 South Lantau (SLIO) | | | | | | | | | | | | | | | | | | |

3-Month Rolling Programme (July 2021)

- Remaining Work
- Actual Work
- Critical Remaining Work
- Milestone
- Actual Milestone
- Critical Milestone

| Activity ID | Activity Name | Original Duration | At Completion Duration | Duration % Complete | Activity % Complete | Remaining Duration | Primary Constraint | Current Start | Current Finish | Late Start | Late Finish | Total Float | M44 Remarks | 2021 | | | | |
|--|---|-------------------|------------------------|---------------------|---------------------|--------------------|--------------------|---------------|----------------|------------|-------------|-------------|-------------|---|--------|---|-----------------|--|
| | | | | | | | | | | | | | | Jul 44 | Aug 45 | Sep 46 | Oct 47 | |
| 05-2980 | Onshore vessel power supply system (2.2.12) | 135 | 339 | 100% | 65% | 0 | | 26-Aug-20 A | 31-Jul-21 | 14-Nov-21 | 14-Nov-21 | 107 | | 31-Jul-21, Onshore vessel power supply system (2.2.12), Onshore ves | | | | |
| EP_SP_66_12-WP6A-M44.05.01.03 AIP Incineration Plant Buildings (2.3) | | | | | | | | | | | | | | | | | | |
| EP_SP_66_12-WP6A-M44.05.01.03.1 General Layout Drawings and Fire Safety Strategy (2.3.00) | | | | | | | | | | | | | | | | | | |
| 05-1210 | Process Building | 135 | 135 | 0% | 0% | 135 | | 31-Jul-21 | 12-Dec-21 | 27-May-22 | 08-Oct-22 | 300 | | 31-Jul-21 | | | | |
| 05-1220 | ACC Equipment Yard | 135 | 135 | 0% | 0% | 135 | | 31-Jul-21 | 12-Dec-21 | 27-May-22 | 08-Oct-22 | 300 | | 31-Jul-21 | | | | |
| 05-1230 | Turbin Hall Building | 135 | 135 | 0% | 0% | 135 | | 31-Jul-21 | 12-Dec-21 | 27-May-22 | 08-Oct-22 | 300 | | 31-Jul-21 | | | | |
| 05-1240 | CCCW Building | 135 | 135 | 0% | 0% | 135 | | 31-Jul-21 | 12-Dec-21 | 27-May-22 | 08-Oct-22 | 300 | | 31-Jul-21 | | | | |
| 05-1260 | Elevated Drive Way and Associated Structures | 135 | 135 | 0% | 0% | 135 | | 31-Jul-21 | 12-Dec-21 | 27-May-22 | 08-Oct-22 | 300 | | 31-Jul-21 | | | | |
| 05-1270 | Reception Pavilion | 135 | 135 | 0% | 0% | 135 | | 31-Jul-21 | 12-Dec-21 | 27-May-22 | 08-Oct-22 | 300 | | 31-Jul-21 | | | | |
| 05-1620 | Chimney | 135 | 135 | 0% | 0% | 135 | | 31-Jul-21 | 12-Dec-21 | 27-May-22 | 08-Oct-22 | 300 | | 31-Jul-21 | | | | |
| EP_SP_66_12-WP6A-M44.05.01.03.2 Foundation design (2.3.01) | | | | | | | | | | | | | | | | | | |
| 05-3070 | Chimney | 64 | 64 | 0% | 5% | 64 | | 31-Jul-21 | 02-Oct-21 | 11-Aug-21 | 13-Oct-21 | 11 | | 31-Jul-21 | | 02-Oct-21, Chimney | | |
| 05-3090 | Reception Pavilion | 135 | 135 | 0% | 0% | 135 | Start On or After | 31-Jul-21* | 12-Dec-21 | 07-Jan-27 | 21-May-27 | 1986 | | 31-Jul-21* | | | | |
| EP_SP_66_12-WP6A-M44.05.01.03.3 Structural design (2.3.02) | | | | | | | | | | | | | | | | | | |
| 05-1330 | Chimney | 0 | 0 | 0% | 45% | 0 | | 07-Oct-21 | 07-Oct-21 | 17-Oct-21 | 17-Oct-21 | 11 | | | | 07-Oct-21 | 07-Oct-21, Chim | |
| 05-1350 | Reception Pavilion Structural Design | 105 | 105 | 0% | 0% | 105 | | 31-Jul-21 | 12-Nov-21 | 06-Feb-27 | 21-May-27 | 2016 | | 31-Jul-21 | | | | |
| EP_SP_66_12-WP6A-M44.05.01.03.8 Operation Management System (2.3.03.04) | | | | | | | | | | | | | | | | | | |
| 05-3180 | Supervisory Control/Data Acquisition/Distributed Control (SCADA/DCS) System (12 Packages) | 105 | 215 | 58.1% | 25% | 44 | Start On or After | 10-Feb-21 A | 12-Sep-21 | 19-Oct-21 | 01-Dec-21 | 80 | | | | 12-Sep-21, Supervisory Control/Data | | |
| EP_SP_66_12-WP6A-M44.05.01.03.6 Fire services installation design (2.3.05) | | | | | | | | | | | | | | | | | | |
| EP_SP_66_12-WP6A-M44.05.01.03.6.1 Process Building (2.3.05.01) | | | | | | | | | | | | | | | | | | |
| 05-1510 | Fire Systems | 105 | 947 | 86.67% | 5% | 14 | | 10-Jan-19 A | 13-Aug-21 | 23-Jan-22 | 05-Feb-22 | 176 | | | | 13-Aug-21, Fire Systems, Fire Systems, 13-Aug-21 | | |
| EP_SP_66_12-WP6A-M44.05.01.03.6.3 Turbin Hall Building (2.3.05.03) | | | | | | | | | | | | | | | | | | |
| 05-5400 | Fire Systems (2.3.05.03.01) | 105 | 960 | 86.67% | 5% | 14 | | 28-Dec-18 A | 13-Aug-21 | 23-Jan-22 | 05-Feb-22 | 176 | | | | 13-Aug-21, Fire Systems (2.3.05.03.01), Fire Systems (2.3. | | |
| 05-5420-1(M22) | FS schematics (2.3.05.03.03) | 105 | 946 | 100% | 5% | 0 | | 28-Dec-18 A | 31-Jul-21 | 23-Oct-21 | 23-Oct-21 | 85 | | | | 31-Jul-21, FS schematics (2.3.05.03.03), FS schematics (2.3.05.03.03) | | |
| EP_SP_66_12-WP6A-M44.05.01.03.6.5 Elevated Drive Way and Associated Structures (2.3.05.05) | | | | | | | | | | | | | | | | | | |
| 05-5445(M22) | Fire Systems | 180 | 607 | 92.22% | 5% | 14 | | 16-Dec-19 A | 13-Aug-21 | 23-Jan-22 | 05-Feb-22 | 176 | | | | 13-Aug-21, Fire Systems, Fire Systems, 13-Aug-21 | | |
| 05-5450-1(M22) | FS schematics | 180 | 593 | 100% | 5% | 0 | | 16-Dec-19 A | 31-Jul-21 | 23-Oct-21 | 23-Oct-21 | 85 | | | | 31-Jul-21, FS schematics, FS schematics, 31-Jul-21 | | |
| EP_SP_66_12-WP6A-M44.05.01.03.6.6 Reception Pavilion (2.3.05.06) | | | | | | | | | | | | | | | | | | |
| 05-5460(M22) | Fire Systems (2.3.05.06.01) | 270 | 680 | 94.81% | 5% | 14 | | 04-Oct-19 A | 13-Aug-21 | 23-Oct-21 | 05-Feb-22 | 176 | | | | 13-Aug-21, Fire Systems (2.3.05.06.01), Fire Systems (2.3. | | |
| 05-5470-1(M22) | FS schematics (2.3.05.06.03) | 270 | 666 | 100% | 5% | 0 | | 04-Oct-19 A | 31-Jul-21 | 23-Oct-21 | 23-Oct-21 | 85 | | | | 31-Jul-21, FS schematics (2.3.05.06.03), FS schematics (2.3.05.06.03) | | |
| EP_SP_66_12-WP6A-M44.05.01.03.6.7 Compressor & Closed Circuit (2.3.05.07) | | | | | | | | | | | | | | | | | | |
| 05-5480-1(M22) | Fire Systems (2.3.05.07.01) | 140 | 703 | 90% | 5% | 14 | | 11-Sep-19 A | 13-Aug-21 | 23-Jan-22 | 05-Feb-22 | 176 | | | | 13-Aug-21, Fire Systems (2.3.05.07.01), Fire Systems (2.3. | | |
| 05-5490-1(M22) | FS schematics (2.3.05.07.03) | 140 | 689 | 100% | 5% | 0 | | 11-Sep-19 A | 31-Jul-21 | 23-Oct-21 | 23-Oct-21 | 85 | | | | 31-Jul-21, FS schematics (2.3.05.07.03), FS schematics (2.3.05.07.03) | | |
| EP_SP_66_12-WP6A-M44.05.01.03.7 Building services design (excluding fire services installation design) (2.3.06) | | | | | | | | | | | | | | | | | | |
| 05-1560 | MVAC (6 Packages) | 105 | 937 | 96.19% | 96.19% | 4 | Start On or After | 10-Jan-19 A | 03-Aug-21 | 08-Jan-22 | 11-Jan-22 | 161 | | | | 03-Aug-21, MVAC (6 Packages), MVAC (6 Packages), 03-Aug-21 | | |
| 05-1570 | Odour Control | 135 | 1116 | 100% | 5% | 0 | Start On or After | 11-Jul-18 A | 31-Jul-21 | 27-Nov-21 | 27-Nov-21 | 120 | | | | 31-Jul-21, Odour Control, Odour Control, 31-Jul-21 | | |
| 05-1590 | Drainage (7 Packages) | 135 | 972 | 67.41% | 25% | 44 | Start On or After | 15-Jan-19 A | 12-Sep-21 | 09-Nov-21 | 22-Dec-21 | 101 | | | | 12-Sep-21, Drainage (7 Packages), | | |
| 05-1600 | ELV (7 Packages) | 135 | 933 | 100% | 65% | 0 | Start On or After | 10-Jan-19 A | 31-Jul-21 | 23-Sep-21 | 23-Sep-21 | 55 | | | | 31-Jul-21, ELV (7 Packages), ELV (7 Packages), 31-Jul-21 | | |
| 05-1610 | Lifts and Escalators (2 Packages) | 135 | 594 | 88.89% | 5% | 15 | Start On or After | 30-Dec-19 A | 14-Aug-21 | 07-Nov-21 | 21-Nov-21 | 99 | | | | 14-Aug-21, Lifts and Escalators (2 Packages), Lifts and Es | | |
| 05-1770 | Vehicle & Container Wash System | 123 | 123 | 0% | 0% | 123 | | 31-Jul-21 | 30-Nov-21 | 11-Sep-21 | 11-Jan-22 | 42 | | 31-Jul-21 | | | | |
| 05-1770-1(M20) | Water Cannon System | 135 | 870 | 34.07% | 45% | 89 | | 11-Jun-19 A | 27-Oct-21 | 13-May-22 | 09-Aug-22 | 286 | | | | | | |
| 05-1770-2 (5a) | Process CCTV System | 135 | 135 | 0% | 0% | 135 | | 31-Jul-21 | 12-Dec-21 | 28-Nov-21 | 11-Apr-22 | 120 | | 31-Jul-21 | | | | |

3-Month Rolling Programme (July 2021)

Remaining Work
 Actual Work
 Critical Remaining Work
 Actual Milestone
 Critical Milestone
 Milestone

| Activity ID | Activity Name | Original Duration | At Completion Duration | Duration % Complete | Activity % Complete | Remaining Duration | Primary Constraint | Current Start | Current Finish | Late Start | Late Finish | Total Float | M44 Remarks | 2021 | | | |
|--|---|-------------------|------------------------|---------------------|---------------------|--------------------|--------------------|---------------|----------------|------------|-------------|-------------|-------------|---|--------|--------|--------|
| | | | | | | | | | | | | | | Jul 44 | Aug 45 | Sep 46 | Oct 47 |
| EP_SP_66_12-WP6A-M44.05.01.04 AIP Mechanical Treatment Plant Building (2.4) | | | | | | | | | | | | | | | | | |
| 05-1640 | Architectural Design (2.4.00) | 105 | 1118 | 42.86% | 5% | 60 | | 07-Sep-18 A | 28-Sep-21 | 13-Jan-22 | 13-Mar-22 | 166 | | 28-Sep-21, Architectural Design (2.4.00) | | | |
| 05-1650 | Foundation design (2.4.01) | 135 | 799 | 67.41% | 5% | 44 | Start On or After | 07-Jul-19 A | 12-Sep-21 | 23-Dec-21 | 04-Feb-22 | 145 | | 12-Sep-21, Foundation design (2.4.01) | | | |
| 05-1660 | Structural design (2.4.02) | 457 | 846 | 90.37% | 5% | 44 | Start On or After | 21-May-19 A | 12-Sep-21 | 23-Oct-21 | 05-Dec-21 | 84 | | 12-Sep-21, Structural design (2.4.02) | | | |
| 05-1670 | Electrical and instrumentation works design (2.4.03) | 65 | 65 | 0% | 0% | 65 | | 31-Jul-21 | 03-Oct-21 | 28-Sep-21 | 01-Dec-21 | 59 | | 31-Jul-21, 03-Oct-21, Electrical and instrumentation works design (2.4.03) | | | |
| 05-1680 | Mechanical works design (2.4.04) | 65 | 65 | 0% | 0% | 65 | | 31-Jul-21 | 03-Oct-21 | 04-Aug-21 | 07-Oct-21 | 4 | | 31-Jul-21, 03-Oct-21, Mechanical works design (2.4.04) | | | |
| 05-1690 | Fire services installation design (2.4.05) (3 Packages) | 135 | 893 | 78.52% | 5% | 29 | | 20-Mar-19 A | 28-Aug-21 | 09-Nov-21 | 07-Dec-21 | 101 | | 28-Aug-21, Fire services installation design (2.4.05) | | | |
| EP_SP_66_12-WP6A-M44.05.01.04.7 Building services design (excluding fire services installation design) (2.4.06) | | | | | | | | | | | | | | | | | |
| 05-1710 | MVAC | 135 | 948 | 34.07% | 5% | 89 | Start On or After | 25-Mar-19 A | 27-Oct-21 | 15-Oct-21 | 11-Jan-22 | 76 | | 28-Aug-21, MVAC (2.4.06) | | | |
| 05-1720 | Odour Control | 75 | 75 | 0% | 0% | 75 | Start On or After | 31-Jul-21* | 13-Oct-21 | 14-Sep-21 | 27-Nov-21 | 45 | | 31-Jul-21*, 13-Oct-21, Odour Control (2.4.06) | | | |
| 05-1740 | Drainage | 135 | 908 | 67.41% | 5% | 44 | Start On or After | 20-Mar-19 A | 12-Sep-21 | 09-Nov-21 | 22-Dec-21 | 101 | | 12-Sep-21, Drainage, Drainage, 12-Sep-21 | | | |
| 05-1750 | ELV | 135 | 864 | 100% | 5% | 0 | Start On or After | 20-Mar-19 A | 31-Jul-21 | 23-Sep-21 | 23-Sep-21 | 55 | | 31-Jul-21, ELV, ELV, 31-Jul-21 | | | |
| 05-1760 | Lifts | 135 | 645 | 51.11% | 5% | 66 | Start On or After | 30-Dec-19 A | 04-Oct-21 | 16-Nov-21 | 20-Jan-22 | 108 | | 04-Oct-21, Lifts, Lifts, 04-Oct-21 | | | |
| 05-1760-1(M20) | Building Management System (BMS) | 66 | 66 | 0% | 0% | 66 | | 31-Jul-21 | 04-Oct-21 | 24-Sep-21 | 28-Nov-21 | 55 | | 31-Jul-21, 04-Oct-21, Building Management System (BMS) | | | |
| EP_SP_66_12-WP6A-M44.05.01.05 AIP Wastewater Treatment Plant (2.5) | | | | | | | | | | | | | | | | | |
| 05-2790 | Fire services installation design (2.5.05) | 135 | 956 | 78.52% | 5% | 29 | | 16-Jan-19 A | 28-Aug-21 | 09-Nov-21 | 07-Dec-21 | 101 | | 28-Aug-21, Fire services installation design (2.5.05) | | | |
| EP_SP_66_12-WP6A-M44.05.01.05.7 Building services design (excluding fire services installation design) (2.5.06) | | | | | | | | | | | | | | | | | |
| 05-1840 | MVAC (2.5.06.02) | 135 | 1016 | 34.07% | 25% | 89 | Start On or After | 16-Jan-19 A | 27-Oct-21 | 15-Oct-21 | 11-Jan-22 | 76 | | 28-Aug-21, MVAC (2.5.06.02) | | | |
| 05-1850 | Odour Control (2.5.06.03) | 105 | 105 | 0% | 0% | 105 | Start On or After | 31-Jul-21* | 12-Nov-21 | 14-Sep-21 | 27-Dec-21 | 45 | | 31-Jul-21*, 12-Nov-21, Odour Control (2.5.06.03) | | | |
| 05-1870 | Drainage (2.5.06.05) | 135 | 971 | 67.41% | 25% | 44 | Start On or After | 16-Jan-19 A | 12-Sep-21 | 09-Nov-21 | 22-Dec-21 | 101 | | 12-Sep-21, Drainage (2.5.06.05), Drainage (2.5.06.05) | | | |
| 05-1880 | ELV (2.5.06.06) | 135 | 927 | 100% | 25% | 0 | Start On or After | 16-Jan-19 A | 31-Jul-21 | 23-Sep-21 | 23-Sep-21 | 55 | | 31-Jul-21, ELV (2.5.06.06), ELV (2.5.06.06), 31-Jul-21 | | | |
| EP_SP_66_12-WP6A-M44.05.01.06 AIP Water Treatment Plant Building (2.6) | | | | | | | | | | | | | | | | | |
| 05-1900 | Architectural Design (2.6.00) | 105 | 1058 | 100% | 65% | 0 | Start On or After | 07-Sep-18 A | 31-Jul-21 | 04-Feb-22 | 04-Feb-22 | 189 | | 31-Jul-21, Architectural Design (2.6.00), Architectural Design (2.6.00), 31-Jul-21 | | | |
| 05-1910 | Foundation design (2.6.01) | 135 | 135 | 0% | 0% | 135 | | 31-Jul-21 | 12-Dec-21 | 23-Sep-21 | 04-Feb-22 | 54 | | 31-Jul-21, Foundation design (2.6.01) | | | |
| 05-1920 | Structural design (2.6.02) | 105 | 105 | 0% | 0% | 105 | | 31-Jul-21 | 12-Nov-21 | 23-Oct-21 | 04-Feb-22 | 84 | | 31-Jul-21, Structural design (2.6.02) | | | |
| 05-1950 | Fire services installation design (2.6.05) (3 Packages) | 135 | 893 | 78.52% | 5% | 29 | | 20-Mar-19 A | 28-Aug-21 | 09-Nov-21 | 07-Dec-21 | 101 | | 28-Aug-21, Fire services installation design (2.6.05) | | | |
| EP_SP_66_12-WP6A-M44.05.01.06.7 Building services design (excluding fire services installation design) (2.6.06) | | | | | | | | | | | | | | | | | |
| 05-1960 | Electrical Services and Lighting (2.6.06.01) | 135 | 864 | 100% | 5% | 0 | Start On or After | 20-Mar-19 A | 31-Jul-21 | 23-Sep-21 | 23-Sep-21 | 55 | | 31-Jul-21, Electrical Services and Lighting (2.6.06.01), Electrical Services and Lighting (2.6.06.01) | | | |
| 05-1970 | MVAC | 135 | 948 | 34.07% | 5% | 89 | Start On or After | 25-Mar-19 A | 27-Oct-21 | 15-Oct-21 | 11-Jan-22 | 76 | | 28-Aug-21, MVAC (2.6.06) | | | |
| 05-2000 | Drainage | 135 | 908 | 67.41% | 5% | 44 | Start On or After | 20-Mar-19 A | 12-Sep-21 | 09-Nov-21 | 22-Dec-21 | 101 | | 12-Sep-21, Drainage, Drainage, 12-Sep-21 | | | |
| 05-2010 | ELV | 135 | 864 | 100% | 5% | 0 | Start On or After | 20-Mar-19 A | 31-Jul-21 | 23-Sep-21 | 23-Sep-21 | 55 | | 31-Jul-21, ELV, ELV, 31-Jul-21 | | | |
| EP_SP_66_12-WP6A-M44.05.01.07 AIP Administration Building (2.7) | | | | | | | | | | | | | | | | | |
| 05-2020 | Architectural Design (2.7.00) | 135 | 1212 | 11.85% | 65% | 119 | Start On or After | 03-Aug-18 A | 26-Nov-21 | 14-Nov-21 | 12-Mar-22 | 106 | | 31-Jul-21, Architectural Design (2.7.00) | | | |
| 05-2030 | Foundation design (2.7.01) | 135 | 135 | 0% | 0% | 135 | | 31-Jul-21 | 12-Dec-21 | 13-Apr-22 | 25-Aug-22 | 256 | | 31-Jul-21, Foundation design (2.7.01) | | | |
| 05-2040 | Structural design (2.7.02) | 135 | 807 | 45.19% | 65% | 74 | Start On or After | 29-Jul-19 A | 12-Oct-21 | 13-Apr-22 | 25-Jun-22 | 256 | | 12-Oct-21, Structural design (2.7.02) | | | |
| 05-2060 | Fire services installation design (3 Packages) (2.7.04) | 135 | 787 | 33.33% | 5% | 90 | Start On or After | 03-Sep-19 A | 28-Oct-21 | 09-Sep-21 | 07-Dec-21 | 40 | | 03-Sep-19 A, Fire services installation design (2.7.04) | | | |
| EP_SP_66_12-WP6A-M44.05.01.07.6 Building services design (excluding fire services installation design) (2.7.05) | | | | | | | | | | | | | | | | | |
| 05-2070 | Electrical Services and Lighting (2.7.05.01) | 135 | 697 | 100% | 5% | 0 | Start On or After | 03-Sep-19 A | 31-Jul-21 | 23-Sep-21 | 23-Sep-21 | 55 | | 31-Jul-21, Electrical Services and Lighting (2.7.05.01), Electrical Services and Lighting (2.7.05.01) | | | |
| 05-2080 | MVAC | 135 | 786 | 34.07% | 5% | 89 | Start On or After | 03-Sep-19 A | 27-Oct-21 | 15-Oct-21 | 11-Jan-22 | 76 | | 28-Aug-21, MVAC (2.7.05) | | | |
| 05-2110 | Drainage | 135 | 741 | 67.41% | 5% | 44 | Start On or After | 03-Sep-19 A | 12-Sep-21 | 09-Nov-21 | 22-Dec-21 | 101 | | 12-Sep-21, Drainage, Drainage, 12-Sep-21 | | | |
| 05-2130 | Lifts and Escalators | 135 | 593 | 89.63% | 5% | 14 | | 30-Dec-19 A | 13-Aug-21 | 08-Nov-21 | 21-Nov-21 | 100 | | 13-Aug-21, Lifts and Escalators, Lifts and Escalators, 13-Aug-21 | | | |
| EP_SP_66_12-WP6A-M44.05.01.08 AIP IVMF Substation (2.8) | | | | | | | | | | | | | | | | | |
| | | 139 | 1066 | 35.97% | | 89 | | 27-Nov-18 A | 27-Oct-21 | 10-Oct-21 | 06-Apr-22 | 161 | | | | | |

3-Month Rolling Programme (July 2021)

■ Remaining Work ◆ Actual Milestone
■ Actual Work ◆ Critical Milestone
■ Critical Remaining Work
◆ Milestone

| Activity ID | Activity Name | Original Duration | At Completion Duration | Duration % Complete | Activity % Complete | Remaining Duration | Primary Constraint | Current Start | Current Finish | Late Start | Late Finish | Total Float | M44 Remarks | 2021 | | | |
|---|--|-------------------|------------------------|---------------------|---------------------|--------------------|--------------------|---------------|----------------|------------|-------------|-------------|-------------|--------|--------|--------|--|
| | | | | | | | | | | | | | | Jul 44 | Aug 45 | Sep 46 | Oct 47 |
| EP_SP_66_12-WP6A-M44.05.01.11.1 External and internal finishes design for Incineration Plant Buildings | | | | | | | | | | | | | | | | | |
| 05-2510 | External and internal finishes design for Incineration Plant Building (2.11.01) | 135 | 529 | 43.7% | 5% | 76 | Start On or After | 04-May-20 A | 14-Oct-21 | 16-Dec-21 | 01-Mar-22 | 138 | | | | | 14-Oct-21 |
| 05-2520 | External and internal finishes design for ACC Equipment Yard | 123 | 123 | 0% | 0% | 123 | | 31-Jul-21 | 30-Nov-21 | 30-Oct-21 | 01-Mar-22 | 91 | | | | | 31-Jul-21 |
| 05-2530 | External and internal finishes design for Turbine Hall Building | 135 | 529 | 43.7% | 5% | 76 | Start On or After | 04-May-20 A | 14-Oct-21 | 03-Aug-21 | 17-Oct-21 | 3 | | | | | 14-Oct-21 |
| 05-2540 | External and internal finishes design for CCCW Building | 135 | 529 | 43.7% | 5% | 76 | Start On or After | 04-May-20 A | 14-Oct-21 | 03-Aug-21 | 17-Oct-21 | 3 | | | | | 14-Oct-21 |
| 05-2550 | External and internal finishes design for Chimney | 0 | 0 | 0% | 5% | 0 | | 07-Oct-21 | 07-Oct-21 | 17-Oct-21 | 17-Oct-21 | 11 | | | | | 07-Oct-21 07-Oct-21, External and internal finishes design for Chimney |
| 05-2560 | External and internal finishes design for Reception Pavilion | 135 | 564 | 43.7% | 5% | 76 | Start On or After | 30-Mar-20 A | 14-Oct-21 | 03-Aug-21 | 17-Oct-21 | 3 | | | | | 14-Oct-21 |
| 05-2570 | External and internal finishes design for MT Plant Building (2.11.02) | 136 | 535 | 44.85% | 5% | 75 | Start On or After | 27-Apr-20 A | 13-Oct-21 | 02-Aug-21 | 15-Oct-21 | 2 | | | | | 13-Oct-21 |
| 05-2580 | External and internal finishes design for the Wastewater Treatment Plant (2.11.03) | 123 | 123 | 0% | 0% | 123 | Start On or After | 31-Jul-21* | 30-Nov-21 | 15-Jun-21 | 15-Oct-21 | -46 | | | | | 31-Jul-21* |
| 05-2590 | External and internal finishes design for the Water Treatment Plant Building (2.11.04) | 123 | 123 | 0% | 0% | 123 | Start On or After | 31-Jul-21* | 30-Nov-21 | 15-Jun-21 | 15-Oct-21 | -46 | | | | | 31-Jul-21* |
| 05-2600 | External and internal finishes design for the Administration Building (2.11.05) | 135 | 534 | 45.19% | 5% | 74 | Start On or After | 27-Apr-20 A | 12-Oct-21 | 03-Aug-21 | 15-Oct-21 | 3 | | | | | 12-Oct-21 |
| 05-2610 | External and internal finishes design for the IWMF Substation (2.11.06) | 135 | 488 | 100% | 5% | 0 | Start On or After | 30-Mar-20 A | 31-Jul-21 | 15-Oct-21 | 15-Oct-21 | 77 | | | | | 31-Jul-21, External and internal finishes design for the IWMF Substation |
| EP_SP_66_12-WP6A-M44.05.01.11.7 Landscape masterplan (2.11.07) | | | | | | | | | | | | | | | | | |
| 05-2620 | Water Feature (2.11.07.01) | 105 | 451 | 58.1% | 5% | 44 | Start On or After | 19-Jun-20 A | 12-Sep-21 | 10-Sep-21 | 23-Oct-21 | 41 | | | | | 12-Sep-21, Water Feature (2.11.07.01) |
| 05-2920_1(M34) | Turbine Hall Building (2.11.07.04) | 105 | 493 | 58.1% | 5% | 44 | | 08-May-20 A | 12-Sep-21 | 10-Sep-21 | 23-Oct-21 | 41 | | | | | 12-Sep-21, Turbine Hall Building (2.11.07.04) |
| 05-2920_2(M34) | Reception Pavilion (2.11.07.06) | 105 | 493 | 58.1% | 5% | 44 | | 08-May-20 A | 12-Sep-21 | 10-Sep-21 | 23-Oct-21 | 41 | | | | | 12-Sep-21, Reception Pavilion (2.11.07.06) |
| 05-2920_3(M34) | MT Plant Building and Water Treatment Plant Building (2.11.07.07) | 105 | 493 | 58.1% | 5% | 44 | | 08-May-20 A | 12-Sep-21 | 10-Sep-21 | 23-Oct-21 | 41 | | | | | 12-Sep-21, MT Plant Building and Water Treatment Plant Building (2.11.07.07) |
| 05-2920_4(M34) | Administration Building (2.11.07.08) | 105 | 493 | 58.1% | 5% | 44 | | 08-May-20 A | 12-Sep-21 | 10-Sep-21 | 23-Oct-21 | 41 | | | | | 12-Sep-21, Administration Building (2.11.07.08) |
| 05-2920_5(M34) | IWMF Substation (2.11.07.09) | 105 | 493 | 58.1% | 5% | 44 | | 08-May-20 A | 12-Sep-21 | 10-Sep-21 | 23-Oct-21 | 41 | | | | | 12-Sep-21, IWMF Substation (2.11.07.09) |
| 05-2920_6(M34) | Process Building (2.11.07.10) | 105 | 493 | 58.1% | 5% | 44 | | 08-May-20 A | 12-Sep-21 | 10-Sep-21 | 23-Oct-21 | 41 | | | | | 12-Sep-21, Process Building (2.11.07.10) |
| EP_SP_66_12-WP6A-M44.05.01.11.8 Architectural Detailing - Site Wide (2.11.29) | | | | | | | | | | | | | | | | | |
| 05-2640 | Architectural Detailing - Site Wide Concept | 12 | 12 | 0% | 5% | 12 | | 31-Jul-21 | 11-Aug-21 | 12-Sep-21 | 23-Sep-21 | 43 | | | | | 31-Jul-21 11-Aug-21, Architectural Detailing - Site Wide Concept |
| EP_SP_66_12-WP6A-M44.05.01.11.9 External and internal finishes design for Elevated Driveway | | | | | | | | | | | | | | | | | |
| 05-5410 | External and internal finishes design for Elevated Driveway | 0 | 0 | 0% | 0% | 0 | Start On or After | 31-Jul-21* | 31-Jul-21 | 21-Sep-21 | 21-Sep-21 | 53 | | | | | 31-Jul-21* 31-Jul-21, External and internal finishes design for Elevated Driveway |
| EP_SP_66_12-WP6A-M44.05.01.12 AIP Testing and Commissioning (2.12) | | | | | | | | | | | | | | | | | |
| 05-2650-1(5) | Factory Acceptance Testing plan (2.12.01.02-07) (8 Packages) | 60 | 830 | 100% | 5% | 0 | | 23-Apr-19 A | 31-Jul-21 | 14-Jun-22 | 14-Jun-22 | 319 | | | | | 31-Jul-21, Factory Acceptance Testing plan (2.12.01.02-07) (8 Packages) |
| 05-2660 | Site Acceptance Testing plan (2.12.02) | 75 | 75 | 0% | 0% | 75 | Start On or After | 31-Jul-21* | 13-Oct-21 | 07-Feb-23 | 22-Apr-23 | 556 | | | | | 31-Jul-21* 13-Oct-21, Site Acceptance Testing plan (2.12.02) |
| 05-2670 | System commissioning plan (2.12.03) | 105 | 105 | 0% | 0% | 105 | Start On or After | 31-Jul-21* | 12-Nov-21 | 05-Jul-23 | 17-Oct-23 | 704 | | | | | 31-Jul-21* 17-Oct-23, System commissioning plan (2.12.03) |
| 05-2680 | Plant commissioning plan (2.12.04) | 105 | 105 | 0% | 0% | 105 | | 31-Jul-21 | 12-Nov-21 | 19-May-22 | 31-Aug-22 | 292 | | | | | 31-Jul-21 31-Aug-22, Plant commissioning plan (2.12.04) |
| EP_SP_66_12-WP6A-M44.05.01.13 AIP Transportation Facilities for the Operation (2.13) | | | | | | | | | | | | | | | | | |
| 05-2690 | Design of vehicles for MSW and Ash and Residues delivery (2.13.01) | 105 | 411 | 86.67% | 5% | 14 | | 29-Jun-20 A | 13-Aug-21 | 23-Jan-23 | 05-Feb-23 | 541 | | | | | 13-Aug-21, Design of vehicles for MSW and Ash and Residues delivery (2.13.01) |
| 05-2700 | Design of marine vessels for the use of the Employer and visitors (2.13.02) | 105 | 340 | 86.67% | 5% | 14 | | 08-Sep-20 A | 13-Aug-21 | 02-Apr-23 | 15-Apr-23 | 610 | | | | | 13-Aug-21, Design of marine vessels for the use of the Employer and visitors (2.13.02) |
| EP_SP_66_12-WP6A-M44.05.01.14 AIP Miscellaneous Works (2.14) | | | | | | | | | | | | | | | | | |
| 05-2720 | Design of visitors and environmental education facilities (2.14.02) | 105 | 434 | 58.1% | 5% | 44 | | 06-Jul-20 A | 12-Sep-21 | 23-Sep-22 | 05-Nov-22 | 419 | | | | | 12-Sep-21, Design of visitors and environmental education facilities (2.14.02) |
| EP_SP_66_12-WP6A-M44.05.01.15 AIP Miscellaneous Detailing (2.15) | | | | | | | | | | | | | | | | | |
| 05-2730 | Covered walkway at passenger berth (2.15.02) | 105 | 105 | 0% | 0% | 105 | | 31-Jul-21 | 12-Nov-21 | 16-Sep-21 | 29-Dec-21 | 47 | | | | | 31-Jul-21 29-Dec-21, Covered walkway at passenger berth (2.15.02) |
| 05-2740 | Gatehouses (2.15.03) | 135 | 135 | 0% | 0% | 135 | Start On or After | 31-Jul-21* | 12-Dec-21 | 24-Apr-22 | 05-Sep-22 | 267 | | | | | 31-Jul-21* 05-Sep-22, Gatehouses (2.15.03) |
| 05-2750 | Weighbridge office (2.15.04) | 105 | 105 | 0% | 0% | 105 | Start On or After | 31-Jul-21* | 12-Nov-21 | 29-Apr-22 | 11-Aug-22 | 272 | | | | | 31-Jul-21* 11-Aug-22, Weighbridge office (2.15.04) |
| EP_SP_66_12-WP6A-M44.05.01.16 AIP Auxiliary Plant Systems (2.16) | | | | | | | | | | | | | | | | | |
| 05-2770 | Vehicle Fuel Filling Station (2.16.02) | 135 | 135 | 0% | 0% | 135 | | 31-Jul-21 | 12-Dec-21 | 13-Apr-22 | 25-Aug-22 | 256 | | | | | 31-Jul-21 25-Aug-22, Vehicle Fuel Filling Station (2.16.02) |
| 05-2780 | Stores systems (2.16.03) | 135 | 135 | 0% | 0% | 135 | Start On or After | 31-Jul-21* | 12-Dec-21 | 06-Jan-22 | 20-May-22 | 159 | | | | | 31-Jul-21* 20-May-22, Stores systems (2.16.03) |
| 05-2780-1(5a) | IWMF Laboratory (2.16.04) | 135 | 518 | 45.19% | 5% | 74 | | 13-May-20 A | 12-Oct-21 | 27-Apr-22 | 09-Jul-22 | 270 | | | | | 12-Oct-21, IWMF Laboratory (2.16.04) |

3-Month Rolling Programme (July 2021)

■ Remaining Work ◆ Actual Milestone
■ Actual Work ◆ Critical Milestone
■ Critical Remaining Work
◆ Milestone

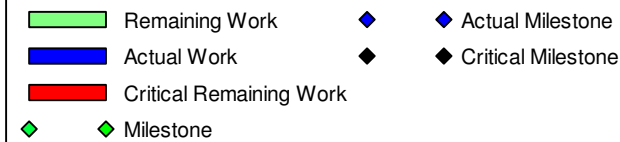
| Activity ID | Activity Name | Original Duration | At Completion Duration | Duration % Complete | Activity % Complete | Remaining Duration | Primary Constraint | Current Start | Current Finish | Late Start | Late Finish | Total Float | M44 Remarks | 2021 | | | |
|--|---|-------------------|------------------------|---------------------|---------------------|--------------------|--------------------|---------------|----------------|------------|-------------|-------------|-------------|--------|--------|--------|--------|
| | | | | | | | | | | | | | | Jul 44 | Aug 45 | Sep 46 | Oct 47 |
| 05-3830 | Compressed Air Plants | 105 | 1078 | 0% | 5% | 179 | | 13-Feb-19 A | 25-Jan-22 | 24-Nov-22 | 21-May-23 | 481 | | | | | |
| EP_SP_66_12-WP6A-M44.05.02.03.5.2 Process Pipeworks (Incl. Ductworks) and Valves | | | | | | | | | | | | | | | | | |
| 05-3840 | Process island (furnace-boiler-FGC) | 105 | 828 | 80% | 5% | 21 | | 16-May-19 A | 12-Sep-21 | 11-Sep-21 | 14-Oct-23 | 762 | | | | | |
| 05-4350 | Pipebridge A (Between Process island & Turbine Hall) | 105 | 351 | 86.67% | 5% | 14 | | 28-Aug-20 A | 13-Aug-21 | 17-Oct-21 | 30-Oct-21 | 78 | | | | | |
| 05-4360 | Compressed Air Plant area | 105 | 381 | 58.1% | 5% | 44 | | 28-Aug-20 A | 12-Sep-21 | 11-Sep-21 | 24-Oct-21 | 42 | | | | | |
| 05-4370 | Pipebridge B (Between CCCW Area & Turbine Hall) | 105 | 337 | 100% | 5% | 0 | | 28-Aug-20 A | 31-Jul-21 | 16-Jul-23 | 16-Jul-23 | 716 | | | | | |
| 05-4380 | Pipebridge C (Between Turbine Hall & ACC Equipment Yard) | 105 | 351 | 86.67% | 5% | 14 | | 28-Aug-20 A | 13-Aug-21 | 01-Oct-23 | 14-Oct-23 | 792 | | | | | |
| 05-4950 | Turbine Hall | 105 | 381 | 58.1% | 5% | 44 | | 28-Aug-20 A | 12-Sep-21 | 21-Dec-21 | 02-Feb-22 | 143 | | | | | |
| 05-4960 | ACC Equipment Yard | 105 | 381 | 58.1% | 5% | 44 | | 28-Aug-20 A | 12-Sep-21 | 11-Sep-21 | 24-Oct-21 | 42 | | | | | |
| 05-4970 | CCCW Area | 105 | 381 | 58.1% | 5% | 44 | | 28-Aug-20 A | 12-Sep-21 | 11-Sep-21 | 24-Oct-21 | 42 | | | | | |
| EP_SP_66_12-WP6A-M44.05.02.03.5.3 Process steel structure support (For equipment, piping & duct, cable tray e | | | | | | | | | | | | | | | | | |
| 05-3530-1(M42) | Process island (furnace-boiler-FGC) (Prefab 2) | 44 | 44 | 0% | 0% | 44 | | 31-Jul-21 | 12-Sep-21 | 05-Sep-21 | 18-Oct-21 | 36 | | | | | |
| 05-3550 | Turbine Hall | 105 | 366 | 100% | 5% | 0 | | 30-Jul-20 A | 31-Jul-21 | 10-Oct-22 | 10-Oct-22 | 437 | | | | | |
| 05-3560 | Pipebridge B (Between CCCW Area & Turbine Hall) | 105 | 337 | 100% | 5% | 0 | | 28-Aug-20 A | 31-Jul-21 | 16-Jul-23 | 16-Jul-23 | 716 | | | | | |
| 05-3570 | Pipebridge C (Between Turbine Hall & ACC Equipment Yard) | 105 | 351 | 86.67% | 5% | 14 | | 28-Aug-20 A | 13-Aug-21 | 01-Oct-23 | 14-Oct-23 | 792 | | | | | |
| EP_SP_66_12-WP6A-M44.05.02.03.5.4 Equipment and piping insulation | | | | | | | | | | | | | | | | | |
| 05-4500 | Incineration System | 105 | 105 | 0% | 0% | 105 | Start On or After | 31-Jul-21* | 12-Nov-21 | 12-Jul-21 | 24-Oct-21 | -19 | | | | | |
| 05-4510 | Heat Recovery Boiler | 105 | 105 | 0% | 0% | 105 | Start On or After | 31-Jul-21* | 12-Nov-21 | 12-Jul-21 | 24-Oct-21 | -19 | | | | | |
| 05-4520 | Boiler Feed Water Systems | 105 | 105 | 0% | 0% | 105 | Start On or After | 31-Jul-21* | 12-Nov-21 | 12-Jul-21 | 24-Oct-21 | -19 | | | | | |
| 05-4530 | Flue Gas Treatment System | 105 | 105 | 0% | 0% | 105 | Start On or After | 31-Jul-21* | 12-Nov-21 | 12-Jul-21 | 24-Oct-21 | -19 | | | | | |
| 05-4540 | Boiler ash and APC residue handling and solidification | 105 | 105 | 0% | 0% | 105 | Start On or After | 31-Jul-21* | 12-Nov-21 | 12-Jul-21 | 24-Oct-21 | -19 | | | | | |
| 05-4550 | Steam Turbine Generator (STG) and Pressure Reducing and Desuperheating Station (PRDS) | 105 | 252 | 58.1% | 45% | 44 | | 04-Jan-21 A | 12-Sep-21 | 11-Sep-21 | 24-Oct-21 | 42 | | | | | |
| 05-4560 | Air cooled condenser | 105 | 252 | 58.1% | 45% | 44 | | 04-Jan-21 A | 12-Sep-21 | 11-Sep-21 | 24-Oct-21 | 42 | | | | | |
| 05-4570 | Closed Circuit Cooling Water System | 105 | 105 | 0% | 0% | 105 | | 31-Jul-21 | 12-Nov-21 | 12-Jul-21 | 24-Oct-21 | -19 | | | | | |
| EP_SP_66_12-WP6A-M44.05.02.03.6 Fire services installation design (2.3.17) | | | | | | | | | | | | | | | | | |
| 05-3660 | Fire Systems | 90 | 843 | 100% | 5% | 0 | | 10-Apr-19 A | 31-Jul-21 | 05-Feb-22 | 05-Feb-22 | 190 | | | | | |
| 05-3680 | FS schematics | 105 | 105 | 0% | 0% | 105 | | 31-Jul-21 | 12-Nov-21 | 24-Oct-21 | 05-Feb-22 | 85 | | | | | |
| EP_SP_66_12-WP6A-M44.05.02.03.7 Building services design (excluding fire services installation design) (2.3.18) | | | | | | | | | | | | | | | | | |
| 05-3690 | Electrical Services and Lighting (7 Packages) | 135 | 135 | 0% | 0% | 135 | | 31-Jul-21 | 12-Dec-21 | 24-Sep-21 | 05-Feb-22 | 55 | | | | | |
| 05-3700 | MVAC | 90 | 90 | 0% | 0% | 90 | | 28-Oct-21 | 25-Jan-22 | 12-Jan-22 | 11-Apr-22 | 76 | | | | | |
| 05-3710 | Odour Control | 135 | 135 | 0% | 0% | 135 | | 14-Oct-21 | 25-Feb-22 | 28-Nov-21 | 11-Apr-22 | 45 | | | | | |
| 05-3720 | Plumbing (7 Packages) | 135 | 135 | 0% | 0% | 135 | Start On or After | 31-Jul-21* | 12-Dec-21 | 09-Oct-21 | 20-Feb-22 | 70 | | | | | |
| 05-3730 | Drainage (7 Packages) | 105 | 105 | 0% | 0% | 105 | | 13-Sep-21 | 26-Dec-21 | 23-Dec-21 | 06-Apr-22 | 101 | | | | | |
| 05-3740 | ELV (7 Packages) | 135 | 135 | 0% | 0% | 135 | | 31-Jul-21 | 12-Dec-21 | 24-Sep-21 | 05-Feb-22 | 55 | | | | | |
| 05-3750 | Lifts and Escalators | 135 | 135 | 0% | 0% | 135 | | 15-Aug-21 | 27-Dec-21 | 22-Nov-21 | 05-Apr-22 | 99 | | | | | |
| 05-3770 | Building Management System (BMS) | 135 | 135 | 0% | 0% | 135 | | 31-Jul-21 | 12-Dec-21 | 23-Aug-21 | 04-Jan-22 | 23 | | | | | |
| 05-3780 | Vehicle & Container Wash System | 105 | 105 | 0% | 0% | 105 | | 02-Oct-21 | 14-Jan-22 | 13-Nov-21 | 25-Feb-22 | 42 | | | | | |
| 05-3780-1(5a) | Process CCTV System | 135 | 135 | 0% | 0% | 135 | Start On | 31-Jul-21* | 12-Dec-21 | 15-Jul-21 | 26-Nov-21 | -16 | | | | | |
| 05-3780-2(M20) | Water Cannon System | 60 | 60 | 0% | 0% | 60 | | 28-Oct-21 | 26-Dec-21 | 10-Aug-22 | 08-Oct-22 | 286 | | | | | |
| EP_SP_66_12-WP6A-M44.05.02.9 DDA Air Cool Condensers Equipment (2.3.06) | | | | | | | | | | | | | | | | | |
| EP_SP_66_12-WP6A-M44.05.02.9.7 Building services design (excluding fire services installation design) (2.3.06) | | | | | | | | | | | | | | | | | |
| 05-5510 | Electrical Services and Lighting | 135 | 135 | 0% | 0% | 135 | | 31-Jul-21 | 12-Dec-21 | 24-Sep-21 | 05-Feb-22 | 55 | | | | | |

3-Month Rolling Programme (July 2021)

■ Remaining Work ◆ Actual Milestone
■ Actual Work ◆ Critical Milestone
■ Critical Remaining Work
◆ Milestone

| Activity ID | Activity Name | Original Duration | At Completion Duration | Duration % Complete | Activity % Complete | Remaining Duration | Primary Constraint | Current Start | Current Finish | Late Start | Late Finish | Total Float | M44 Remarks | 2021 | | | | |
|--|---|-------------------|------------------------|---------------------|---------------------|--------------------|--------------------|------------------|------------------|------------------|------------------|-------------|-------------|------------|--------|--------|--------|------------|
| | | | | | | | | | | | | | | Jul 44 | Aug 45 | Sep 46 | Oct 47 | |
| 05-5520 | Plumbing | 135 | 135 | 0% | 0% | 135 | | 31-Jul-21 | 12-Dec-21 | 09-Oct-21 | 20-Feb-22 | 70 | | 31-Jul-21 | | | | |
| 05-5530 | ELV | 135 | 135 | 0% | 0% | 135 | | 31-Jul-21 | 12-Dec-21 | 21-Aug-21 | 02-Jan-22 | 21 | | 31-Jul-21 | | | | |
| 05-5540 | Building Management System (BMS) | 135 | 135 | 0% | 0% | 135 | | 31-Jul-21 | 12-Dec-21 | 22-May-22 | 03-Oct-22 | 295 | | 31-Jul-21 | | | | |
| EP_SP_66_12-WP6A-M44.05.02.04 DDA Mechanical Treatment Plant Building (2.4) | | 301 | 301 | 0% | 0% | 301 | | 31-Jul-21 | 27-May-22 | 24-Sep-21 | 25-Jul-22 | 59 | | | | | | |
| 05-5160 | Architectural Design (2.4.25) | 105 | 105 | 0% | 0% | 105 | Start On or After | 29-Sep-21* | 11-Jan-22 | 14-Mar-22 | 26-Jun-22 | 166 | | | | | | 29-Sep-21* |
| 05-5170 | Foundation design (2.4.13) | 135 | 135 | 0% | 0% | 135 | | 13-Sep-21 | 25-Jan-22 | 05-Feb-22 | 19-Jun-22 | 145 | | | | | | 13-Sep-21 |
| 05-5190 | Electrical and instrumentation works design (2.4.15) | 236 | 236 | 0% | 0% | 236 | | 04-Oct-21 | 27-May-22 | 02-Dec-21 | 25-Jul-22 | 59 | | | | | | 04-Oct-21 |
| 05-5200 | Mechanical works design (2.4.16) | 201 | 201 | 0% | 0% | 201 | | 04-Oct-21 | 22-Apr-22 | 08-Oct-21 | 26-Apr-22 | 4 | | | | | | 04-Oct-21 |
| 05-5210 | Fire services installation design (2.4.17) | 60 | 60 | 0% | 0% | 60 | | 29-Aug-21 | 27-Oct-21 | 08-Dec-21 | 05-Feb-22 | 101 | | | | | | 29-Aug-21 |
| EP_SP_66_12-WP6A-M44.05.02.04.7 Building services design (excluding fire services installation design) (2.4.18) | | 210 | 210 | 0% | 0% | 210 | | 31-Jul-21 | 25-Feb-22 | 24-Sep-21 | 12-Apr-22 | 46 | | | | | | |
| 05-3850 | LV and Emergency Power Distribution Design | 135 | 135 | 0% | 0% | 135 | Start On or After | 31-Jul-21* | 12-Dec-21 | 24-Sep-21 | 05-Feb-22 | 55 | | 31-Jul-21* | | | | |
| 05-3860 | MVAC | 90 | 90 | 0% | 0% | 90 | | 28-Oct-21 | 25-Jan-22 | 12-Jan-22 | 11-Apr-22 | 76 | | | | | | 28-Oct-21 |
| 05-3870 | Odour Control | 135 | 135 | 0% | 0% | 135 | | 14-Oct-21 | 25-Feb-22 | 28-Nov-21 | 11-Apr-22 | 45 | | | | | | 14-Oct-21 |
| 05-3880 | Plumbing | 135 | 135 | 0% | 0% | 135 | | 31-Jul-21 | 12-Dec-21 | 09-Oct-21 | 20-Feb-22 | 70 | | 31-Jul-21 | | | | |
| 05-3890 | Drainage | 105 | 105 | 0% | 0% | 105 | | 13-Sep-21 | 26-Dec-21 | 23-Dec-21 | 06-Apr-22 | 101 | | | | | | 13-Sep-21 |
| 05-3900 | Lighting and small power | 135 | 135 | 0% | 0% | 135 | | 31-Jul-21 | 12-Dec-21 | 24-Sep-21 | 05-Feb-22 | 55 | | 31-Jul-21 | | | | |
| 05-3910 | Lifts and Escalators | 75 | 75 | 0% | 0% | 75 | | 05-Oct-21 | 18-Dec-21 | 21-Jan-22 | 05-Apr-22 | 108 | | | | | | 05-Oct-21 |
| 05-3910-1 | Building Management System (BMS) | 135 | 135 | 0% | 0% | 135 | | 05-Oct-21 | 16-Feb-22 | 29-Nov-21 | 12-Apr-22 | 55 | | | | | | 05-Oct-21 |
| EP_SP_66_12-WP6A-M44.05.02.05 DDA Wastewater Treatment Plant (2.5) | | 223 | 223 | 0% | 0% | 223 | | 31-Jul-21 | 10-Mar-22 | 04-Aug-21 | 09-Aug-22 | 152 | | | | | | |
| 05-3920 | Architectural Design (2.5.25) | 135 | 135 | 0% | 0% | 135 | | 31-Jul-21 | 12-Dec-21 | 17-Sep-21 | 29-Jan-22 | 48 | | 31-Jul-21 | | | | |
| 05-3930 | Foundation design (2.5.13) | 135 | 135 | 0% | 0% | 135 | | 31-Jul-21 | 12-Dec-21 | 17-Sep-21 | 29-Jan-22 | 48 | | 31-Jul-21 | | | | |
| 05-3940 | Structural design (2.5.14) | 135 | 135 | 0% | 0% | 135 | | 31-Jul-21 | 12-Dec-21 | 17-Sep-21 | 29-Jan-22 | 48 | | 31-Jul-21 | | | | |
| 05-3950 | Electrical and instrumentation works design (2.5.15) | 223 | 223 | 0% | 0% | 223 | | 31-Jul-21 | 10-Mar-22 | 30-Dec-21 | 09-Aug-22 | 152 | | 31-Jul-21 | | | | |
| 05-3960 | Mechanical works design (2.5.16) (2 Packages) | 203 | 203 | 0% | 0% | 203 | | 31-Jul-21 | 18-Feb-22 | 04-Aug-21 | 22-Feb-22 | 4 | | 31-Jul-21 | | | | |
| 05-3970 | Fire services installation design (2.5.17) (2 Packages) | 60 | 60 | 0% | 0% | 60 | Start On or After | 29-Aug-21* | 27-Oct-21 | 08-Dec-21 | 05-Feb-22 | 101 | | | | | | 29-Aug-21* |
| EP_SP_66_12-WP6A-M44.05.02.05.7 Building services design (excluding fire services installation design) (2.5.18) | | 179 | 179 | 0% | 0% | 179 | | 31-Jul-21 | 25-Jan-22 | 24-Sep-21 | 11-Apr-22 | 76 | | | | | | |
| 05-3980 | LV and Emergency Power Distribution Design for IWMF Waste Water Treatment Plant | 135 | 135 | 0% | 0% | 135 | | 31-Jul-21 | 12-Dec-21 | 24-Sep-21 | 05-Feb-22 | 55 | | 31-Jul-21 | | | | |
| 05-3990 | MVAC | 90 | 90 | 0% | 0% | 90 | | 28-Oct-21 | 25-Jan-22 | 12-Jan-22 | 11-Apr-22 | 76 | | | | | | 28-Oct-21 |
| 05-4010 | Plumbing | 135 | 135 | 0% | 0% | 135 | | 31-Jul-21 | 12-Dec-21 | 09-Oct-21 | 20-Feb-22 | 70 | | 31-Jul-21 | | | | |
| 05-4020 | Drainage | 105 | 105 | 0% | 0% | 105 | | 13-Sep-21 | 26-Dec-21 | 23-Dec-21 | 06-Apr-22 | 101 | | | | | | 13-Sep-21 |
| 05-4030 | ELV | 135 | 135 | 0% | 0% | 135 | | 31-Jul-21 | 12-Dec-21 | 24-Sep-21 | 05-Feb-22 | 55 | | 31-Jul-21 | | | | |
| EP_SP_66_12-WP6A-M44.05.02.06 DDA Water Treatment Plant Building (2.6) | | 368 | 368 | 0% | 0% | 368 | | 31-Jul-21 | 02-Aug-22 | 20-Sep-21 | 09-Aug-22 | 7 | | | | | | |
| 05-4050 | Architectural Design (2.6.25) | 135 | 135 | 0% | 0% | 135 | | 31-Jul-21 | 12-Dec-21 | 05-Feb-22 | 19-Jun-22 | 189 | | 31-Jul-21 | | | | |
| 05-4080 | Electrical and instrumentation works design (2.6.15) | 324 | 324 | 0% | 0% | 324 | | 13-Sep-21 | 02-Aug-22 | 20-Sep-21 | 09-Aug-22 | 7 | | | | | | 13-Sep-21 |
| 05-4090 | Mechanical works design (2.6.16) | 256 | 256 | 0% | 0% | 256 | | 13-Sep-21 | 26-May-22 | 27-Nov-21 | 09-Aug-22 | 75 | | | | | | 13-Sep-21 |
| 05-4100 | Fire services installation design (2.6.17) | 60 | 60 | 0% | 0% | 60 | | 29-Aug-21 | 27-Oct-21 | 08-Dec-21 | 05-Feb-22 | 101 | | | | | | 29-Aug-21 |
| EP_SP_66_12-WP6A-M44.05.02.06.7 Building services design (excluding fire services installation design) (2.6.18) | | 179 | 179 | 0% | 0% | 179 | | 31-Jul-21 | 25-Jan-22 | 24-Sep-21 | 11-Apr-22 | 76 | | | | | | |
| 05-4110 | Electrical Services and Lighting | 135 | 135 | 0% | 0% | 135 | | 31-Jul-21 | 12-Dec-21 | 24-Sep-21 | 05-Feb-22 | 55 | | 31-Jul-21 | | | | |
| 05-4120 | MVAC | 90 | 90 | 0% | 0% | 90 | | 28-Oct-21 | 25-Jan-22 | 12-Jan-22 | 11-Apr-22 | 76 | | | | | | 28-Oct-21 |
| 05-4140 | Plumbing | 135 | 135 | 0% | 0% | 135 | | 31-Jul-21 | 12-Dec-21 | 09-Oct-21 | 20-Feb-22 | 70 | | 31-Jul-21 | | | | |
| 05-4150 | Drainage | 105 | 105 | 0% | 0% | 105 | | 13-Sep-21 | 26-Dec-21 | 23-Dec-21 | 06-Apr-22 | 101 | | | | | | 13-Sep-21 |
| 05-4160 | ELV | 135 | 135 | 0% | 0% | 135 | | 31-Jul-21 | 12-Dec-21 | 24-Sep-21 | 05-Feb-22 | 55 | | 31-Jul-21 | | | | |

3-Month Rolling Programme (July 2021)



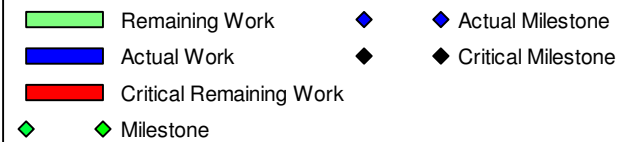
| Activity ID | Activity Name | Original Duration | At Completion Duration | Duration % Complete | Activity % Complete | Remaining Duration | Primary Constraint | Current Start | Current Finish | Late Start | Late Finish | Total Float | M44 Remarks | 2021 | | | |
|---------------------------------|---|-------------------|------------------------|---------------------|---------------------|--------------------|--------------------|---------------|----------------|------------|-------------|-------------|-------------|--------|--------|--------|-----------|
| | | | | | | | | | | | | | | Jul 44 | Aug 45 | Sep 46 | Oct 47 |
| EP_SP_66_12-WP6A-M44.05.02.07 | DDA Administration Building (2.7) | 179 | 179 | 0% | | 179 | | 31-Jul-21 | 25-Jan-22 | 24-Sep-21 | 27-Dec-22 | 336 | | | | | |
| 05-4210 | Fire services installation design (2.7.14) | 60 | 60 | 0% | 0% | 60 | | 29-Oct-21 | 27-Dec-21 | 08-Dec-21 | 05-Feb-22 | 40 | | | | | 29-Oct-21 |
| EP_SP_66_12-WP6A-M44.05.02.07.6 | Building services design (excluding fire services installation design) (2.7.15) | 179 | 179 | 0% | | 179 | | 31-Jul-21 | 25-Jan-22 | 24-Sep-21 | 27-Dec-22 | 336 | | | | | |
| 05-4220 | Electrical Services and Lighting | 135 | 135 | 0% | 0% | 135 | | 31-Jul-21 | 12-Dec-21 | 24-Sep-21 | 05-Feb-22 | 55 | | | | | 31-Jul-21 |
| 05-4230 | MVAC | 90 | 90 | 0% | 0% | 90 | | 28-Oct-21 | 25-Jan-22 | 12-Jan-22 | 11-Apr-22 | 76 | | | | | 28-Oct-21 |
| 05-4250 | Plumbing | 135 | 135 | 0% | 0% | 135 | | 31-Jul-21 | 12-Dec-21 | 09-Oct-21 | 20-Feb-22 | 70 | | | | | 31-Jul-21 |
| 05-4260 | Drainage | 105 | 105 | 0% | 0% | 105 | | 13-Sep-21 | 26-Dec-21 | 23-Dec-21 | 06-Apr-22 | 101 | | | | | 13-Sep-21 |
| 05-4270 | ELV | 135 | 135 | 0% | 0% | 135 | | 31-Jul-21 | 12-Dec-21 | 24-Sep-21 | 05-Feb-22 | 55 | | | | | 31-Jul-21 |
| 05-4280 | Lifts and Escalators | 135 | 135 | 0% | 0% | 135 | | 14-Aug-21 | 26-Dec-21 | 22-Nov-21 | 05-Apr-22 | 100 | | | | | 14-Aug-21 |
| 05-4280-1 | Building Management System (BMS) | 135 | 135 | 0% | 0% | 135 | | 31-Jul-21 | 12-Dec-21 | 15-Aug-22 | 27-Dec-22 | 380 | | | | | 31-Jul-21 |
| EP_SP_66_12-WP6A-M44.05.02.08 | DDA IWMF Substation (2.8) | 347 | 807 | 17.29% | | 287 | | 27-Feb-20 A | 13-May-22 | 14-Aug-21 | 27-Sep-22 | 137 | | | | | |
| 05-4290 | Architectural Design (2.8.25) | 105 | 148 | 0% | 5% | 105 | Start On or After | 18-Jun-21 A | 12-Nov-21 | 17-Mar-22 | 29-Jun-22 | 229 | | | | | |
| 05-4300 | Foundation design (2.8.13) | 135 | 135 | 0% | 0% | 135 | | 31-Jul-21 | 12-Dec-21 | 18-Feb-22 | 02-Jul-22 | 202 | | | | | 31-Jul-21 |
| 05-4310 | Structural design (2.8.14) | 195 | 807 | 0% | 65% | 287 | | 27-Feb-20 A | 13-May-22 | 15-Dec-21 | 27-Sep-22 | 137 | | | | | |
| 05-4320 | Electrical and instrumentation works design (2.8.15) | 75 | 75 | 0% | 0% | 75 | | 31-Jul-21 | 13-Oct-21 | 14-Aug-21 | 27-Oct-21 | 14 | | | | | 31-Jul-21 |
| 05-4340 | Fire services installation design (2.8.17) | 60 | 60 | 0% | 0% | 60 | | 29-Aug-21 | 27-Oct-21 | 08-Nov-21 | 06-Jan-22 | 71 | | | | | 29-Aug-21 |
| EP_SP_66_12-WP6A-M44.05.02.08.7 | Building services design (excluding fire services installation design) (2.8.18) | 179 | 179 | 0% | | 179 | | 31-Jul-21 | 25-Jan-22 | 24-Sep-21 | 05-Jul-22 | 161 | | | | | |
| 05-4990 | Electrical Services and Lighting | 135 | 135 | 0% | 0% | 135 | | 31-Jul-21 | 12-Dec-21 | 24-Sep-21 | 05-Feb-22 | 55 | | | | | 31-Jul-21 |
| 05-5000 | MVAC | 90 | 90 | 0% | 0% | 90 | | 28-Oct-21 | 25-Jan-22 | 07-Apr-22 | 05-Jul-22 | 161 | | | | | 28-Oct-21 |
| 05-5010 | Plumbing | 135 | 135 | 0% | 0% | 135 | | 31-Jul-21 | 12-Dec-21 | 09-Oct-21 | 20-Feb-22 | 70 | | | | | 31-Jul-21 |
| 05-5020 | Drainage | 105 | 105 | 0% | 0% | 105 | | 31-Jul-21 | 12-Nov-21 | 22-Jan-22 | 06-May-22 | 175 | | | | | 31-Jul-21 |
| 05-5030 | ELV | 135 | 135 | 0% | 0% | 135 | | 31-Jul-21 | 12-Dec-21 | 24-Sep-21 | 05-Feb-22 | 55 | | | | | 31-Jul-21 |
| 05-5030-1 | Building Management System (BMS) | 135 | 135 | 0% | 0% | 135 | | 31-Jul-21 | 12-Dec-21 | 17-Nov-21 | 31-Mar-22 | 109 | | | | | 31-Jul-21 |
| EP_SP_66_12-WP6A-M44.05.02.4 | DDA Elevated Drive Way and Associated Structures Foundation | 135 | 135 | 0% | | 135 | | 31-Jul-21 | 12-Dec-21 | 20-Mar-22 | 01-Aug-22 | 232 | | | | | |
| EP_SP_66_12-WP6A-M44.05.02.4.1 | Building services design (excluding fire services installation design) | 135 | 135 | 0% | | 135 | | 31-Jul-21 | 12-Dec-21 | 20-Mar-22 | 01-Aug-22 | 232 | | | | | |
| 05-5560 | Building Management System (BMS) | 135 | 135 | 0% | 0% | 135 | | 31-Jul-21 | 12-Dec-21 | 20-Mar-22 | 01-Aug-22 | 232 | | | | | 31-Jul-21 |
| EP_SP_66_12-WP6A-M44.05.02.5 | DDA Reception Pavilion | 74 | 74 | 0% | | 74 | | 31-Jul-21 | 12-Oct-21 | 09-Aug-22 | 21-Oct-22 | 374 | | | | | |
| EP_SP_66_12-WP6A-M44.05.02.5.1 | Building services design (excluding fire services installation design) | 74 | 74 | 0% | | 74 | | 31-Jul-21 | 12-Oct-21 | 09-Aug-22 | 21-Oct-22 | 374 | | | | | |
| 05-2130-1 | Building Management System (BMS) | 74 | 74 | 0% | 0% | 74 | | 31-Jul-21 | 12-Oct-21 | 09-Aug-22 | 21-Oct-22 | 374 | | | | | 31-Jul-21 |
| EP_SP_66_12-WP6A-M44.05.02.6 | DDA CCCW Building | 135 | 135 | 0% | | 135 | | 31-Jul-21 | 12-Dec-21 | 25-Jul-22 | 06-Dec-22 | 359 | | | | | |
| EP_SP_66_12-WP6A-M44.05.02.6.1 | Building services design (excluding fire services installation design) | 135 | 135 | 0% | | 135 | | 31-Jul-21 | 12-Dec-21 | 25-Jul-22 | 06-Dec-22 | 359 | | | | | |
| 05-2130-2 | Building Management System (BMS) | 135 | 135 | 0% | 0% | 135 | | 31-Jul-21 | 12-Dec-21 | 25-Jul-22 | 06-Dec-22 | 359 | | | | | 31-Jul-21 |
| EP_SP_66_12-WP6A-M44.05.02.10 | DDA Roads and Utilities (2.10) | 286 | 562 | 21.33% | | 225 | | 28-Aug-20 A | 12-Mar-22 | 19-Aug-21 | 21-Aug-23 | 527 | | | | | |
| EP_SP_66_12-WP6A-M44.05.02.10.1 | Permanent road works layout on the Artificial Island (2.10.13) | 135 | 135 | 0% | | 135 | | 11-Aug-21 | 23-Dec-21 | 24-Sep-21 | 05-Feb-22 | 44 | | | | | |
| 05-4470 | Roads and hardstandings layout | 135 | 135 | 0% | 0% | 135 | | 11-Aug-21 | 23-Dec-21 | 24-Sep-21 | 05-Feb-22 | 44 | | | | | 11-Aug-21 |
| 05-4480 | Road signage and markings | 135 | 135 | 0% | 0% | 135 | | 11-Aug-21 | 23-Dec-21 | 24-Sep-21 | 05-Feb-22 | 44 | | | | | 11-Aug-21 |
| EP_SP_66_12-WP6A-M44.05.02.10.2 | Sewerage design on the Artificial Island (2.10.14) | 135 | 135 | 0% | | 135 | | 11-Aug-21 | 23-Dec-21 | 23-Nov-21 | 22-Feb-23 | 426 | | | | | |
| 05-4430 | Foul Sewerage | 135 | 135 | 0% | 0% | 135 | | 11-Aug-21 | 23-Dec-21 | 23-Nov-21 | 06-Apr-22 | 104 | | | | | 11-Aug-21 |
| 05-4440 | Contaminated Sewerage | 135 | 135 | 0% | 0% | 135 | | 11-Aug-21 | 23-Dec-21 | 11-Oct-22 | 22-Feb-23 | 426 | | | | | 11-Aug-21 |
| EP_SP_66_12-WP6A-M44.05.02.10.3 | Drainage system design on the Artificial Island (2.10.15) | 105 | 105 | 0% | | 105 | | 11-Aug-21 | 23-Nov-21 | 23-Dec-21 | 28-Apr-22 | 156 | | | | | |
| 05-5310 | Surface water Drainage System | 105 | 105 | 0% | 0% | 105 | | 11-Aug-21 | 23-Nov-21 | 23-Dec-21 | 06-Apr-22 | 134 | | | | | 11-Aug-21 |
| 05-5320 | First Flush Drainage System concept | 105 | 105 | 0% | 0% | 105 | | 11-Aug-21 | 23-Nov-21 | 14-Jan-22 | 28-Apr-22 | 156 | | | | | 11-Aug-21 |

3-Month Rolling Programme (July 2021)

- Remaining Work
- Actual Work
- Critical Remaining Work
- Milestone
- Actual Milestone
- Critical Milestone

| Activity ID | Activity Name | Original Duration | At Completion Duration | Duration % Complete | Activity % Complete | Remaining Duration | Primary Constraint | Current Start | Current Finish | Late Start | Late Finish | Total Float | M44 Remarks | 2021 | | | | | |
|---|---|-------------------|------------------------|---------------------|---------------------|--------------------|--------------------|---------------|----------------|------------|-------------|-------------|-------------|-----------|-----------|-----------|-----------|---|--|
| | | | | | | | | | | | | | | Jul 44 | Aug 45 | Sep 46 | Oct 47 | | |
| EP_SP_66_12-WP6A-M44.05.02.10.4 Water supply system design on the Artificial Island (2.10.16) | | | | | | | | | | | | | | | | | | | |
| 05-5250 | Potable Water Distribution System | 135 | 135 | 0% | 0% | 135 | | 31-Jul-21 | 12-Dec-21 | 24-Apr-22 | 05-Sep-22 | 267 | | 31-Jul-21 | | | | | |
| 05-5260 | Recycled Water System | 135 | 135 | 0% | 0% | 135 | | 31-Jul-21 | 12-Dec-21 | 24-Apr-22 | 05-Sep-22 | 267 | | 31-Jul-21 | | | | | |
| 05-5270 | Irrigation System | 135 | 135 | 0% | 0% | 135 | | 31-Jul-21 | 12-Dec-21 | 09-Oct-21 | 20-Feb-22 | 70 | | 31-Jul-21 | | | | | |
| 05-5280 | Rainwater harvesting System | 135 | 135 | 0% | 0% | 135 | | 31-Jul-21 | 12-Dec-21 | 09-Oct-21 | 20-Feb-22 | 70 | | 31-Jul-21 | | | | | |
| 05-5300-2(M24) | Building Services system for seawater intake (2.10.16.09) | 90 | 90 | 0% | 0% | 90 | | 31-Jul-21 | 28-Oct-21 | 23-Nov-21 | 20-Feb-22 | 115 | | 31-Jul-21 | | | | | |
| 05-5300-3(5a) | Chemical scrubber system for odour control (2.10.16.10) | 135 | 135 | 0% | 0% | 135 | | 25-Aug-21 | 06-Jan-22 | 28-Nov-21 | 11-Apr-22 | 95 | | | 25-Aug-21 | | | | |
| EP_SP_66_12-WP6A-M44.05.02.10.6 Design of telecommunication and other utilities (2.10.18) | | | | | | | | | | | | | | | | | | | |
| 05-3400 (M21) | Computerised Maintenance Management System (CMMS) | 105 | 105 | 0% | 0% | 105 | | 14-Aug-21 | 26-Nov-21 | 19-Aug-21 | 01-Dec-21 | 5 | | | 14-Aug-21 | | | | |
| 05-3410 (M21) | Information and Document Management System (IDMS) | 105 | 105 | 0% | 0% | 105 | | 31-Jul-21 | 12-Nov-21 | 19-Aug-21 | 01-Dec-21 | 19 | | 31-Jul-21 | | | | | |
| 05-4580 | Power Distribution System concept / schematics | 75 | 75 | 0% | 0% | 75 | | 13-Oct-21 | 26-Dec-21 | 27-Jan-22 | 11-Apr-22 | 106 | | | | | 13-Oct-21 | | |
| 05-4590 | Site Lighting Concept / Schematics | 135 | 135 | 0% | 0% | 135 | | 31-Jul-21 | 12-Dec-21 | 09-Apr-23 | 21-Aug-23 | 617 | | 31-Jul-21 | | | | | |
| 05-4600 | Lightning Protection System concept / schematics | 135 | 135 | 0% | 0% | 135 | | 31-Jul-21 | 12-Dec-21 | 21-Aug-21 | 02-Jan-22 | 21 | | 31-Jul-21 | | | | | |
| 05-4610 | Site ELV Network System - Communications System concept / schematics | 75 | 75 | 0% | 0% | 75 | | 13-Oct-21 | 26-Dec-21 | 27-Jan-22 | 11-Apr-22 | 106 | | | | | 13-Oct-21 | | |
| 05-4620 | Site ELV Network System - Security Systems concept / schematics | 75 | 75 | 0% | 0% | 75 | | 13-Oct-21 | 26-Dec-21 | 27-Jan-22 | 11-Apr-22 | 106 | | | | | 13-Oct-21 | | |
| 05-4640 | Microwave transmission of FS direct link | 135 | 135 | 0% | 0% | 135 | | 31-Jul-21 | 12-Dec-21 | 28-Nov-21 | 11-Apr-22 | 120 | | 31-Jul-21 | | | | | |
| 05-4650 | Fuel Handling System concept / schematics | 135 | 135 | 0% | 0% | 135 | | 29-Sep-21 | 10-Feb-22 | 30-Dec-22 | 13-May-23 | 457 | | | | | 29-Sep-21 | | |
| 05-5400-1(M22) | Automatic Traffic Control System (ATCS) | 135 | 135 | 0% | 0% | 135 | | 29-Oct-21 | 12-Mar-22 | 03-Feb-23 | 17-Jun-23 | 462 | | | | | | 29-Oct-21 | |
| EP_SP_66_12-WP6A-M44.05.02.10.7 Utility ducts/Pipebridges design (2.10.26) | | | | | | | | | | | | | | | | | | | |
| 05-5040 | Design of Pipe / Utilities Trenches concept | 135 | 135 | 0% | 0% | 135 | | 29-Aug-21 | 10-Jan-22 | 11-Oct-22 | 22-Feb-23 | 408 | | | | 29-Aug-21 | | | |
| 05-5050 | Sitewide Utilities Trenches Design | 135 | 135 | 0% | 0% | 135 | | 29-Aug-21 | 10-Jan-22 | 11-Oct-22 | 22-Feb-23 | 408 | | | | 29-Aug-21 | | | |
| EP_SP_66_12-WP6A-M44.05.02.10.7.3 Layout Plan for Pipe Bridge Network | | | | | | | | | | | | | | | | | | | |
| 05-7000 | Pipebridge A | 135 | 324 | 78.52% | 5% | 29 | | 09-Oct-20 A | 28-Aug-21 | 25-Dec-21 | 22-Jan-22 | 147 | | | | | | 28-Aug-21, Pipebridge A, Pipebridge A, 28-Aug | |
| 05-7010 | Pipebridge B | 135 | 366 | 78.52% | 5% | 29 | | 28-Aug-20 A | 28-Aug-21 | 25-Dec-21 | 22-Jan-22 | 147 | | | | | | 28-Aug-21, Pipebridge B, Pipebridge B, 28-Aug | |
| 05-7020 | Pipebridge C | 135 | 366 | 78.52% | 5% | 29 | | 28-Aug-20 A | 28-Aug-21 | 25-Dec-21 | 22-Jan-22 | 147 | | | | | | 28-Aug-21, Pipebridge C, Pipebridge C, 28-Aug | |
| EP_SP_66_12-WP6A-M44.05.02.10.7.1 Foundaion Plan for Pipe Bridge Network | | | | | | | | | | | | | | | | | | | |
| 05-7030 | Pipebridge A | 135 | 324 | 78.52% | 5% | 29 | | 09-Oct-20 A | 28-Aug-21 | 25-Dec-21 | 22-Jan-22 | 147 | | | | | | 28-Aug-21, Pipebridge A, Pipebridge A, 28-Aug | |
| 05-7040 | Pipebridge B | 29 | 29 | 0% | 5% | 29 | | 31-Jul-21 | 28-Aug-21 | 25-Dec-21 | 22-Jan-22 | 147 | | 31-Jul-21 | | | | 28-Aug-21, Pipebridge B | |
| 05-7050 | Pipebridge C | 29 | 29 | 0% | 5% | 29 | | 31-Jul-21 | 28-Aug-21 | 25-Dec-21 | 22-Jan-22 | 147 | | 31-Jul-21 | | | | 28-Aug-21, Pipebridge C | |
| EP_SP_66_12-WP6A-M44.05.02.10.7.2 Structure Plan for Pipe Bridge Network | | | | | | | | | | | | | | | | | | | |
| 05-7060 | Pipebridge A | 135 | 324 | 78.52% | 5% | 29 | | 09-Oct-20 A | 28-Aug-21 | 25-Dec-21 | 22-Jan-22 | 147 | | | | | | 28-Aug-21, Pipebridge A, Pipebridge A, 28-Aug | |
| 05-7070 | Pipebridge B | 135 | 366 | 78.52% | 5% | 29 | | 28-Aug-20 A | 28-Aug-21 | 25-Dec-21 | 22-Jan-22 | 147 | | | | | | 28-Aug-21, Pipebridge B, Pipebridge B, 28-Aug | |
| 05-7080 | Pipebridge C | 135 | 366 | 78.52% | 5% | 29 | | 28-Aug-20 A | 28-Aug-21 | 25-Dec-21 | 22-Jan-22 | 147 | | | | | | 28-Aug-21, Pipebridge C, Pipebridge C, 28-Aug | |
| EP_SP_66_12-WP6A-M44.05.02.11 DDA Architectural, Finishes and Landscaping Works (2.11) | | | | | | | | | | | | | | | | | | | |
| EP_SP_66_12-WP6A-M44.05.02.11.1 External and internal finishes design for Incineration Plant Buildings | | | | | | | | | | | | | | | | | | | |
| 05-4670 | External and internal finishes design for Incineration Plant Building (2.11.15) | 135 | 135 | 0% | 0% | 135 | | 31-Jul-21 | 12-Dec-21 | 18-Oct-21 | 01-Mar-22 | 79 | | 31-Jul-21 | | | | | |
| 05-4680 | External and internal finishes design for ACC Equipment Yard | 135 | 135 | 0% | 0% | 135 | | 31-Jul-21 | 12-Dec-21 | 18-Oct-21 | 01-Mar-22 | 79 | | 31-Jul-21 | | | | | |
| 05-4690 | External and internal finishes design for Turbine Hall Building | 135 | 135 | 0% | 0% | 135 | Start On or After | 15-Oct-21* | 26-Feb-22 | 18-Oct-21 | 01-Mar-22 | 3 | | | | | | 15-Oct-21* | |
| 05-4700 | External and internal finishes design for CCCW Building | 135 | 135 | 0% | 0% | 135 | Start On or After | 15-Oct-21* | 26-Feb-22 | 18-Oct-21 | 01-Mar-22 | 3 | | | | | | 15-Oct-21* | |
| 05-4710 | External and internal finishes design for Chimney | 135 | 135 | 0% | 0% | 135 | | 07-Oct-21 | 18-Feb-22 | 18-Oct-21 | 01-Mar-22 | 11 | | | | | | 07-Oct-21 | |
| 05-4720 | External and internal finishes design for Reception Pavilion | 135 | 135 | 0% | 0% | 135 | Start On or After | 15-Oct-21* | 26-Feb-22 | 18-Oct-21 | 01-Mar-22 | 3 | | | | | | 15-Oct-21* | |
| 05-4730 | External and internal finishes design for MT Plant Building (2.11.16) | 137 | 137 | 0% | 0% | 137 | | 14-Oct-21 | 27-Feb-22 | 16-Oct-21 | 01-Mar-22 | 2 | | | | | | 14-Oct-21 | |

3-Month Rolling Programme (July 2021)



| Activity ID | Activity Name | Original Duration | At Completion Duration | Duration % Complete | Activity % Complete | Remaining Duration | Primary Constraint | Current Start | Current Finish | Late Start | Late Finish | Total Float | M44 Remarks | 2021 | | | |
|--|--|-------------------|------------------------|---------------------|---------------------|--------------------|--------------------|--------------------|------------------|------------------|------------------|-------------|-------------|-----------|-----------|---|---------------------|
| | | | | | | | | | | | | | | Jul 44 | Aug 45 | Sep 46 | Oct 47 |
| 06-2050(6) | Process Island Furnace Boiler Line 1 Electrical & Instrumentation Fabrication | 340 | 340 | 0% | 0% | 340 | | 31-Jul-21 | 05-Jul-22 | 09-Jun-21 | 14-May-22 | -52 | | 31-Jul-21 | | | |
| 06-2050-1(6) | Process Island Furnace Boiler Line 1 Electrical & Instrumentation installation | 340 | 340 | 0% | 0% | 340 | | 29-Aug-21 | 03-Aug-22 | 08-Jul-21 | 12-Jun-22 | -52 | | | 29-Aug-21 | | |
| EP_SP_66_12-WP6A-M44.06.1.26.2 Process Island Furnace Boiler line 2 | | 529 | 732 | 21.36% | | 416 | | 18-Sep-20 A | 19-Sep-22 | 14-Jun-21 | 03-Aug-22 | -47 | | | | | |
| 06-2100(6) | Process Island Furnace Boiler Line 2 Structure Cutting, Painting & Fabrication | 370 | 500 | 38.92% | 38.92% | 226 | | 30-Oct-20 A | 13-Mar-22 | 14-Jun-21 | 25-Jan-22 | -47 | | | | | |
| 06-2110(6) | Process Island Furnace Boiler Line 2 Structure Erection | 437 | 494 | 4.81% | 4.81% | 416 | | 14-May-21 A | 19-Sep-22 | 14-Jun-21 | 03-Aug-22 | -47 | | | | | |
| 06-2120(6) | Process Island Furnace Boiler Line 2 Mechanical Fabrication | 270 | 381 | 75.93% | 75.93% | 65 | | 18-Sep-20 A | 03-Oct-21 | 14-Jun-21 | 17-Aug-21 | -47 | | | | | Process Island Furn |
| 06-2120-1(6) | Process Island Furnace Boiler Line 2 Mechanical Erection | 305 | 305 | 0% | 0% | 305 | | 02-Sep-21 | 03-Jul-22 | 17-Jul-21 | 17-May-22 | -47 | | | 02-Sep-21 | | |
| 06-2130(6) | Process Island Furnace Boiler Line 2 Piping Fabrication | 350 | 381 | 32.29% | 32.29% | 237 | | 09-Mar-21 A | 24-Mar-22 | 14-Jun-21 | 05-Feb-22 | -47 | | | | | |
| 06-2130-1(6) | Process Island Furnace Boiler Line 2 Piping Installation | 350 | 350 | 0% | 0% | 350 | | 08-Aug-21 | 23-Jul-22 | 22-Jun-21 | 06-Jun-22 | -47 | | | 08-Aug-21 | | |
| 06-2140(6) | Process Island Furnace Boiler Line 2 Electrical & Instrumentation Fabrication | 331 | 331 | 0% | 0% | 331 | | 31-Jul-21 | 26-Jun-22 | 14-Jun-21 | 10-May-22 | -47 | | | 31-Jul-21 | | |
| 06-2140-1(6) | Process Island Furnace Boiler Line 2 Electrical & Instrumentation installation | 331 | 331 | 0% | 0% | 331 | | 11-Sep-21 | 07-Aug-22 | 26-Jul-21 | 21-Jun-22 | -47 | | | | 11-Sep-21 | |
| EP_SP_66_12-WP6A-M44.06.1.26.3 Process Island Furnace Boiler line 3 | | 582 | 678 | 26.29% | | 429 | | 24-Nov-20 A | 02-Oct-22 | 08-Jul-21 | 09-Sep-22 | -23 | | | | | |
| 06-2190(6) | Process Island Furnace Boiler Line 3 Structure Cutting, Painting & Fabrication | 264 | 498 | 5.68% | 5.68% | 249 | | 24-Nov-20 A | 05-Apr-22 | 08-Jul-21 | 13-Mar-22 | -23 | | | | | |
| 06-2200-1(6) | Process Island Furnace Boiler Line 3 Structure Erection | 429 | 429 | 0% | 0% | 429 | | 31-Jul-21 | 02-Oct-22 | 08-Jul-21 | 09-Sep-22 | -23 | | | 31-Jul-21 | | |
| 06-2210-1(6) | Process Island Furnace Boiler Line 3 Mechanical Fabrication | 270 | 270 | 0% | 0% | 270 | | 31-Jul-21 | 26-Apr-22 | 08-Jul-21 | 03-Apr-22 | -23 | | | 31-Jul-21 | | |
| 06-2215-1(6) | Process Island Furnace Boiler Line 3 Mechanical Erection | 300 | 300 | 0% | 0% | 300 | | 17-Sep-21 | 13-Jul-22 | 25-Aug-21 | 20-Jun-22 | -23 | | | | 17-Sep-21 | |
| 06-2220-1(6) | Process Island Furnace Boiler Line 3 Piping Fabrication | 350 | 350 | 41.14% | 41.14% | 206 | | 09-Mar-21 A | 21-Feb-22 | 08-Jul-21 | 29-Jan-22 | -23 | | | | | |
| 06-2225-1(6) | Process Island Furnace Boiler Line 3 Piping Installation | 350 | 350 | 0% | 0% | 350 | | 28-Aug-21 | 12-Aug-22 | 05-Aug-21 | 20-Jul-22 | -23 | | | 28-Aug-21 | | |
| 06-2230-1(6) | Process Island Furnace Boiler Line 3 Electrical & Instrumentation Fabrication | 340 | 340 | 0% | 0% | 340 | | 29-Sep-21 | 03-Sep-22 | 06-Sep-21 | 11-Aug-22 | -23 | | | | 29-Sep-21 | |
| 06-2235-1(6) | Process Island Furnace Boiler Line 3 Electrical & Instrumentation installation | 340 | 340 | 0% | 0% | 340 | | 04-Oct-21 | 08-Sep-22 | 11-Sep-21 | 16-Aug-22 | -23 | | | | 04-Oct-21 | |
| EP_SP_66_12-WP6A-M44.06.1.26.4 Process Island Furnace Boiler line 4 | | 638 | 651 | 34.48% | | 418 | | 10-Dec-20 A | 21-Sep-22 | 06-Jul-21 | 27-Aug-22 | -25 | | | | | |
| 06-2280(6) | Process Island Furnace Boiler Line 4 Structure Cutting, Painting & Fabrication | 370 | 471 | 35.68% | 35.68% | 238 | | 10-Dec-20 A | 25-Mar-22 | 06-Jul-21 | 28-Feb-22 | -25 | | | | | |
| 06-2290-1(6) | Process Island Furnace Boiler Line 4 Structure Erection | 485 | 518 | 13.81% | 13.81% | 418 | | 22-Apr-21 A | 21-Sep-22 | 06-Jul-21 | 27-Aug-22 | -25 | | | | | |
| 06-2305-1(6) | Process Island Furnace Boiler Line 4 Mechanical Erection | 314 | 314 | 0% | 0% | 314 | | 24-Sep-21 | 03-Aug-22 | 30-Aug-21 | 09-Jul-22 | -25 | | | | 24-Sep-21 | |
| 06-2310-1(6) | Process Island Furnace Boiler Line 4 Piping Fabrication | 350 | 381 | 32.29% | 32.29% | 237 | | 09-Mar-21 A | 24-Mar-22 | 06-Jul-21 | 27-Feb-22 | -25 | | | | | |
| 06-2315-1(6) | Process Island Furnace Boiler Line 4 Piping Installation | 350 | 350 | 0% | 0% | 350 | | 18-Sep-21 | 02-Sep-22 | 24-Aug-21 | 08-Aug-22 | -25 | | | | 18-Sep-21 | |
| 06-2320-1(6) | Process Island Furnace Boiler Line 4 Electrical & Instrumentation Fabrication | 340 | 340 | 0% | 0% | 340 | | 31-Jul-21 | 05-Jul-22 | 06-Jul-21 | 10-Jun-22 | -25 | | | 31-Jul-21 | | |
| 06-2325-1(6) | Process Island Furnace Boiler Line 4 Electrical & Instrumentation installation | 340 | 340 | 0% | 0% | 340 | | 13-Oct-21 | 17-Sep-22 | 18-Sep-21 | 23-Aug-22 | -25 | | | | 13-Oct-21 | |
| EP_SP_66_12-WP6A-M44.06.1.26.5 Process Island Furnace Boiler line 5 | | 640 | 803 | 23.91% | | 487 | | 18-Sep-20 A | 29-Nov-22 | 14-Jul-21 | 12-Nov-22 | -17 | | | | | |
| 06-2370(6) | Process Island Furnace Boiler Line 5 Structure Cutting, Painting & Fabrication | 370 | 512 | 16.76% | 16.76% | 308 | | 08-Jan-21 A | 03-Jun-22 | 14-Jul-21 | 17-May-22 | -17 | | | | | |
| 06-2380(6) | Process Island Furnace Boiler Line 5 Structure Erection | 480 | 480 | 0% | 0% | 480 | | 07-Aug-21 | 29-Nov-22 | 21-Jul-21 | 12-Nov-22 | -17 | | | 07-Aug-21 | | |
| 06-2390(6) | Process Island Furnace Boiler Line 5 Mechanical Fabrication | 270 | 586 | 0% | 0% | 270 | | 18-Sep-20 A | 26-Apr-22 | 14-Jul-21 | 09-Apr-22 | -17 | | | | | |
| 06-2390-1(6) | Process Island Furnace Boiler Line 5 Mechanical Erection | 322 | 322 | 0% | 0% | 322 | | 25-Oct-21 | 11-Sep-22 | 08-Oct-21 | 25-Aug-22 | -17 | | | | 25-Oct-21 | |
| 06-2400-1(6) | Process Island Furnace Boiler Line 5 Piping Fabrication | 350 | 381 | 28.29% | 28.29% | 251 | | 23-Mar-21 A | 07-Apr-22 | 14-Jul-21 | 21-Mar-22 | -17 | | | | | |
| 06-2405-1(6) | Process Island Furnace Boiler Line 5 Piping Installation | 350 | 350 | 0% | 0% | 350 | | 27-Oct-21 | 11-Oct-22 | 10-Oct-21 | 24-Sep-22 | -17 | | | | 27-Oct-21 | |
| 06-2410-1(6) | Process Island Furnace Boiler Line 5 Electrical & Instrumentation Fabrication | 340 | 340 | 0% | 0% | 340 | | 31-Jul-21 | 05-Jul-22 | 14-Jul-21 | 18-Jun-22 | -17 | | | 31-Jul-21 | | |
| EP_SP_66_12-WP6A-M44.06.1.26.6 Process Island Furnace Boiler line 6 | | 596 | 759 | 25.67% | | 443 | | 18-Sep-20 A | 16-Oct-22 | 26-Jul-21 | 11-Oct-22 | -5 | | | | | |
| 06-2460(6) | Process Island Furnace Boiler Line 6 Structure Cutting, Painting & Fabrication | 370 | 449 | 26.76% | 26.76% | 271 | | 03-Feb-21 A | 27-Apr-22 | 26-Jul-21 | 22-Apr-22 | -5 | | | | | |
| 06-2470(6) | Process Island Furnace Boiler Line 6 Structure Erection | 429 | 429 | 0% | 0% | 429 | | 14-Aug-21 | 16-Oct-22 | 09-Aug-21 | 11-Oct-22 | -5 | | | 14-Aug-21 | | |
| 06-2480(6) | Process Island Furnace Boiler Line 6 Mechanical Fabrication | 270 | 331 | 94.44% | 94.44% | 15 | | 18-Sep-20 A | 14-Aug-21 | 17-Oct-21 | 31-Oct-21 | 78 | | | 14-Aug-21 | Process Island Furnace Boiler Line 6 Mechanic | |
| 06-2480-1(6) | Process Island Furnace Boiler Line 6 Mechanical Erection | 320 | 320 | 0% | 0% | 320 | | 31-Jul-21 | 15-Jun-22 | 17-Oct-21 | 01-Sep-22 | 78 | | | 31-Jul-21 | | |
| 06-2490(6) | Process Island Furnace Boiler Line 6 Piping Fabrication | 350 | 381 | 28.29% | 28.29% | 251 | | 23-Mar-21 A | 07-Apr-22 | 31-Jul-21 | 07-Apr-22 | 0 | | | | | |

3-Month Rolling Programme (July 2021)

Remaining Work
 Actual Work
 Critical Remaining Work
 Milestone
 Actual Milestone
 Critical Milestone

Integrated Waste Management Facilities, Phase 1

| Activity ID | Activity Name | Original Duration | At Completion Duration | Duration % Complete | Activity % Complete | Remaining Duration | Primary Constraint | Current Start | Current Finish | Late Start | Late Finish | Total Float | M44 Remarks | 2021 | | | |
|--|---|-------------------|------------------------|---------------------|---------------------|--------------------|--------------------|--------------------|------------------|------------------|------------------|-------------|-------------|-----------|--------|--------|--|
| | | | | | | | | | | | | | | Jul 44 | Aug 45 | Sep 46 | Oct 47 |
| 06-2920-1(6) | Process Island FGC Line 5 Mechanical Erection | 270 | 270 | 0% | 0% | 270 | | 24-Sep-21 | 20-Jun-22 | 03-Dec-21 | 29-Aug-22 | 70 | | | | | 24-Sep-21 |
| 06-2930(6) | Process Island FGC Line 5 Piping Fabrication | 350 | 393 | 0% | 0% | 350 | | 18-Jun-21 A | 15-Jul-22 | 11-Aug-21 | 26-Jul-22 | 11 | | | | | |
| 06-2940(6) | Process Island FGC Line 5 Electrical & Instrumentation Fabrication | 340 | 340 | 0% | 0% | 340 | | 31-Jul-21 | 05-Jul-22 | 28-Aug-21 | 02-Aug-22 | 28 | | 31-Jul-21 | | | |
| EP_SP_66_12-WP6A-M44.06.1.7.6 Process Island FGC line 6 | | 464 | 671 | 0% | 0% | 464 | | 05-Jan-21 A | 06-Nov-22 | 09-Aug-21 | 30-Nov-22 | 24 | | | | | |
| 06-2990(6) | Process Island FGC Line 6 Structure Cutting, Painting & Fabrication | 345 | 400 | 9.28% | 9.28% | 313 | | 05-May-21 A | 08-Jun-22 | 09-Aug-21 | 17-Jun-22 | 9 | | | | | |
| 06-3000(6) | Process Island FGC Line 6 Structure Erection | 457 | 457 | 0% | 0% | 457 | | 07-Aug-21 | 06-Nov-22 | 16-Aug-21 | 15-Nov-22 | 9 | | 07-Aug-21 | | | |
| 06-3010(6) | Process Island FGC Line 6 Mechanical Fabrication | 270 | 301 | 65.19% | 65.19% | 94 | | 05-Jan-21 A | 01-Nov-21 | 09-Aug-21 | 10-Nov-21 | 9 | | | | | |
| 06-3010-1(6) | Process Island FGC Line 6 Mechanical Erection | 327 | 327 | 0% | 0% | 327 | | 31-Jul-21 | 22-Jun-22 | 14-Oct-21 | 05-Sep-22 | 75 | | 31-Jul-21 | | | |
| 06-3020(6) | Process Island FGC Line 6 Piping Fabrication | 350 | 350 | 0% | 0% | 350 | | 31-Jul-21 | 15-Jul-22 | 09-Aug-21 | 24-Jul-22 | 9 | | 31-Jul-21 | | | |
| 06-3030(6) | Process Island FGC Line 6 Electrical & Instrumentation Fabrication | 340 | 340 | 0% | 0% | 340 | | 31-Jul-21 | 05-Jul-22 | 07-Oct-21 | 11-Sep-22 | 68 | | 31-Jul-21 | | | |
| 06-3030-1(6) | Process Island FGC Line 6 Electrical & Instrumentation installation | 340 | 340 | 0% | 0% | 340 | | 19-Oct-21 | 23-Sep-22 | 26-Dec-21 | 30-Nov-22 | 68 | | | | | 19-Oct-21 |
| EP_SP_66_12-WP6A-M44.06.2 Off-site Fabrication of Turbine Modules | | 904 | 1709 | 36.95% | | 570 | | 18-Jun-18 A | 20-Feb-23 | 07-Aug-21 | 27-Feb-23 | 7 | | | | | |
| EP_SP_66_12-WP6A-M44.06.2.1 Material Procurement | | 546 | 1393 | 53.48% | | 254 | | 18-Jun-18 A | 10-Apr-22 | 05-Nov-21 | 02-Jun-22 | 53 | | | | | |
| 06-1050-2(1) | Pipe Material Submission and Approval | 90 | 90 | 0% | 0% | 90 | | 31-Jul-21 | 28-Oct-21 | 05-Nov-21 | 02-Feb-22 | 97 | | 31-Jul-21 | | | |
| 06-1060-1(1) | Mechanical Equipment Procurement (Incl. FAT) | 380 | 1289 | 69.47% | 69.47% | 116 | | 18-Jun-18 A | 27-Dec-21 | 07-Feb-22 | 02-Jun-22 | 157 | | | | | |
| 06-1060-2(1) | Pipe Material Procurement (Incl. FAT) | 180 | 639 | 31.67% | 31.67% | 123 | | 29-Mar-20 A | 27-Dec-21 | 02-Dec-21 | 03-Apr-22 | 97 | | | | | |
| 06-1060-3(1) | Electrical and Instrumentation Material Procurement (Incl. FAT) | 365 | 743 | 43.56% | 43.56% | 206 | | 29-Mar-20 A | 10-Apr-22 | 09-Nov-21 | 02-Jun-22 | 53 | | | | | |
| EP_SP_66_12-WP6A-M44.06.2.2 Fabrication of Module (Power Island) | | 570 | 570 | 0% | | 570 | | 31-Jul-21 | 20-Feb-23 | 07-Aug-21 | 27-Feb-23 | 7 | | | | | |
| EP_SP_66_12-WP6A-M44.06.2.2.1 Turbine Module 1 | | 480 | 480 | 0% | | 480 | | 31-Jul-21 | 22-Nov-22 | 07-Aug-21 | 31-Dec-22 | 39 | | | | | |
| 06-4000(6) | Turbine Module 1 - Structure Cutting, Painting, Pre-assembly & Erection | 480 | 480 | 0% | 0% | 480 | | 31-Jul-21 | 22-Nov-22 | 07-Aug-21 | 29-Nov-22 | 7 | | 31-Jul-21 | | | |
| 06-4010(6) | Turbine Module 1 - Steam Turbine 1 Fabrication | 450 | 450 | 0% | 0% | 450 | | 30-Aug-21 | 22-Nov-22 | 08-Oct-21 | 31-Dec-22 | 39 | | | | | 30-Aug-21 |
| 06-4020(6) | Turbine Module 1 - Generator & Equipment Installation | 450 | 450 | 0% | 0% | 450 | | 30-Aug-21 | 22-Nov-22 | 08-Oct-21 | 31-Dec-22 | 39 | | | | | 30-Aug-21 |
| EP_SP_66_12-WP6A-M44.06.2.2.2 Turbine Module 2 | | 480 | 480 | 0% | | 480 | | 29-Oct-21 | 20-Feb-23 | 05-Nov-21 | 27-Feb-23 | 7 | | | | | |
| 06-4200(6) | Turbine Module 2 - Structure Cutting, Painting, Pre-assembly & Erection | 480 | 480 | 0% | 0% | 480 | | 29-Oct-21 | 20-Feb-23 | 05-Nov-21 | 27-Feb-23 | 7 | | | | | 29-Oct-21 |
| EP_SP_66_12-WP6A-M44.06.3 Procurement for ACC Units | | 440 | 440 | 0% | | 440 | | 31-Jul-21 | 13-Oct-22 | 19-Sep-21 | 02-Dec-22 | 50 | | | | | |
| 06-1110 | Material & Equipment Procurement | 47 | 47 | 0% | 0% | 47 | | 31-Jul-21 | 15-Sep-21 | 19-Sep-21 | 04-Nov-21 | 50 | | 31-Jul-21 | | | 15-Sep-21, Material & Equipment |
| 06-1120 | Off-site Fabrication of ACC Units | 400 | 400 | 0% | 0% | 400 | | 09-Sep-21 | 13-Oct-22 | 29-Oct-21 | 02-Dec-22 | 50 | | | | | 09-Sep-21 |
| EP_SP_66_12-WP6A-M44.06.5 Procurement for WWTP Equipment | | 180 | 180 | 0% | | 180 | | 31-Jul-21 | 26-Jan-22 | 17-Aug-21 | 12-Feb-22 | 17 | | | | | |
| 06-1190-3(1) | Electrical and Instrumentation Material Submission and Approval | 180 | 180 | 0% | 0% | 180 | | 31-Jul-21 | 26-Jan-22 | 17-Aug-21 | 12-Feb-22 | 17 | | 31-Jul-21 | | | |
| EP_SP_66_12-WP6A-M44.06.7 Procurement for HV Transformers and Associated Equipment | | 550 | 1020 | 49.64% | | 277 | | 19-Jul-19 A | 03-May-22 | 28-Oct-21 | 27-Sep-22 | 147 | | | | | |
| EP_SP_66_12-WP6A-M44.06.7.1 Procurement of Transformers & EDG | | 550 | 1020 | 49.64% | | 277 | | 19-Jul-19 A | 03-May-22 | 25-Dec-21 | 27-Sep-22 | 147 | | | | | |
| 06-1280(1) | Procurement of Transformers | 550 | 1020 | 49.64% | 49.64% | 277 | | 19-Jul-19 A | 03-May-22 | 25-Dec-21 | 27-Sep-22 | 147 | | | | | |
| EP_SP_66_12-WP6A-M44.06.7.2 Procurement of Switchboard/Pannels and Cables | | 90 | 90 | 0% | | 90 | | 14-Oct-21 | 11-Jan-22 | 28-Oct-21 | 25-Jan-22 | 14 | | | | | |
| 06-2090(1) | Material Submission and Approval | 90 | 90 | 0% | 0% | 90 | | 14-Oct-21 | 11-Jan-22 | 28-Oct-21 | 25-Jan-22 | 14 | | | | | 14-Oct-21 |
| EP_SP_66_12-WP6A-M44.06.10 Procurement and Off-site Fabrication of Pipe Bridges (Incl. Pipings) | | 272 | 456 | 56.25% | | 119 | | 28-Aug-20 A | 26-Nov-21 | 26-Sep-21 | 22-Jan-22 | 57 | | | | | |
| 06-1390(1) | Material Submission and Approval | 90 | 348 | 87.78% | 87.78% | 11 | | 28-Aug-20 A | 10-Aug-21 | 26-Sep-21 | 06-Oct-21 | 57 | | | | | 10-Aug-21, Material Submission and Approval, Material Subm |
| 06-1400 | Material & Equipment Procurement | 108 | 108 | 0% | 0% | 108 | | 11-Aug-21 | 26-Nov-21 | 07-Oct-21 | 22-Jan-22 | 57 | | 11-Aug-21 | | | |
| EP_SP_66_12-WP6A-M44.06.13 Procurement for Fire Services System | | 425 | 425 | 0% | | 425 | | 28-Oct-21 | 26-Dec-22 | 07-Jan-22 | 07-Mar-23 | 71 | | | | | |
| EP_SP_66_12-WP6A-M44.06.13.1 IWMF Substation | | 425 | 425 | 0% | | 425 | | 28-Oct-21 | 26-Dec-22 | 07-Jan-22 | 07-Mar-23 | 71 | | | | | |
| 06-1810(6) | Material Submission & Equipment Procurement (For IWMF Substation) | 425 | 425 | 0% | 0% | 425 | | 28-Oct-21 | 26-Dec-22 | 07-Jan-22 | 07-Mar-23 | 71 | | | | | 28-Oct-21 |
| EP_SP_66_12-WP6A-M44.08 Maritime Works | | 879 | 911 | 69.28% | | 270 | | 29-Oct-19 A | 26-Apr-22 | 23-Jul-21 | 05-Sep-22 | 132 | | | | | |
| EP_SP_66_12-WP6A-M44.08.1 Marine Construction | | 879 | 911 | 69.28% | | 270 | | 29-Oct-19 A | 26-Apr-22 | 23-Jul-21 | 05-Sep-22 | 132 | | | | | |

3-Month Rolling Programme (July 2021)

- Remaining Work
- Actual Work
- Critical Remaining Work
- Milestone
- Actual Milestone
- Critical Milestone

| Activity ID | Activity Name | Original Duration | At Completion Duration | Duration % Complete | Activity % Complete | Remaining Duration | Primary Constraint | Current Start | Current Finish | Late Start | Late Finish | Total Float | M44 Remarks | 2021 | | | |
|--|--|-------------------|------------------------|---------------------|---------------------|--------------------|--------------------|---------------|----------------|------------|-------------|-------------|-------------|-------------|--------|---|--|
| | | | | | | | | | | | | | | Jul 44 | Aug 45 | Sep 46 | Oct 47 |
| EP_SP_66_12-WP6A-M44.08.1.1 Phase I - Construction of Perimeter Seawalls | | | | | | | | | | | | | | | | | |
| EP_SP_66_12-WP6A-M44.08.1.1.1 Seawall and Berth at DCM Area | | | | | | | | | | | | | | | | | |
| EP_SP_66_12-WP6A-M44.08.1.1.1.5 Seawall Structural Works | | | | | | | | | | | | | | | | | |
| 08-1115(3) | Caisson infill, Solid ballast, toe protection, precast concrete blocks ..etc Laying | 250 | 669 | 88.8% | 88.8% | 28 | | 29-Oct-19 A | 27-Aug-21 | 31-Jul-21 | 27-Aug-21 | 0 | | | | | |
| EP_SP_66_12-WP6A-M44.08.1.1.5.1 Remain Works | | | | | | | | | | | | | | | | | |
| 08-1105-08(6) | Prefabrication of Precast Beam and Slab for Seawall A | 140 | 140 | 0% | 0% | 140 | | 31-Jul-21 | 17-Dec-21 | 18-Aug-21 | 04-Jan-22 | 18 | | 31-Jul-21 | | | |
| 08-1105-09(6) | Prefabrication of Precast Beam & Slab for Seawall B | 140 | 140 | 0% | 0% | 140 | | 31-Jul-21 | 17-Dec-21 | 18-Aug-21 | 04-Jan-22 | 18 | | 31-Jul-21 | | | |
| 08-1120 | Construction of Seawall and Wave Wall Extension from +3mPD to Deck Level for Seawall A | 220 | 220 | 0% | 0% | 220 | | 30-Aug-21 | 06-Apr-22 | 21-Oct-21 | 28-May-22 | 52 | | | | 30-Aug-21 | |
| 08-1120-1(6) | Construction of Seawall and Wave Wall Extension from +3mPD to Deck Level for Seawall B | 220 | 220 | 0% | 0% | 220 | | 28-Aug-21 | 04-Apr-22 | 28-Aug-21 | 04-Apr-22 | 0 | | | | 28-Aug-21 | |
| EP_SP_66_12-WP6A-M44.08.1.2 Phase II - Reclamation, Breakwater and Berth Construction | | | | | | | | | | | | | | | | | |
| EP_SP_66_12-WP6A-M44.08.1.2.1 Reclamation | | | | | | | | | | | | | | | | | |
| EP_SP_66_12-WP6A-M44.08.1.2.1.6 Reclamation Works | | | | | | | | | | | | | | | | | |
| EP_SP_66_12-WP6A-M44.08.1.2.1.6.1 Reclamation Fill | | | | | | | | | | | | | | | | | |
| 08-1200-3 (M35) | Reclamation fill for Marine Access from -9.0mPD to +2.5mPD (~300,00m3 @ 4000m3/d) | 75 | 90 | 62.67% | 62.67% | 28 | | 30-May-21 A | 27-Aug-21 | 31-Jul-21 | 27-Aug-21 | 0 | | | | | |
| 08-1220(6) | Reclamation fill for Marine Access from +2.5 to Formation Level (75,000m3 @ 4000m3/d) | 19 | 19 | 0% | 0% | 19 | | 29-Sep-21 | 17-Oct-21 | 29-Sep-21 | 17-Oct-21 | 0 | | | | 29-Sep-21 | 17-Oct-21 |
| 08-3030(6) | Fill up +2.5 to +7.5mPD at East Edge Area (Stage 3-2) (127,250m3 @ 4000m3/d) | 32 | 75 | 62% | 62% | 12 | | 29-May-21 A | 12-Aug-21 | 08-Oct-21 | 20-Oct-21 | 70 | | | | 12-Aug-21, Fill up +2.5 to +7.5mPD at East Edge Area (Stage 3-2) | |
| 08-3040(6) | Fill up +2.5 to +7.5mPD at West Edge Area (Stage 3-3) (127,250m3 @ 4000m3/d) | 32 | 32 | 0% | 0% | 32 | | 28-Aug-21 | 28-Sep-21 | 28-Aug-21 | 28-Sep-21 | 0 | | | | 28-Aug-21 | 28-Sep-21, Fill up +2.5 to +7.5mPD at West Edge Area (Stage 3-3) |
| 08-3070(6) | Fill up +2.5 to +7.5mPD at South Edge Area (Stage 5-1) (95,000m3 @ 4000m3/d) | 24 | 24 | 0% | 0% | 24 | | 18-Oct-21 | 10-Nov-21 | 24-Oct-21 | 16-Nov-21 | 6 | | | | 18-Oct-21 | |
| EP_SP_66_12-WP6A-M44.08.1.2.1.6.3 Surcharge Filling | | | | | | | | | | | | | | | | | |
| 08-3020(6) | Fill up +6 to +12mPD at TH & CCCW Building (Stage 3) (95,000m3 @ 2500m3/d) | 48 | 136 | 0% | 0% | 48 | | 04-May-21 A | 16-Sep-21 | 23-Jul-21 | 08-Sep-21 | -8 | | | | | |
| 08-3020-1(6) | Fill up +6 to +12mPD at ACC Building & Substation (Stage 4) (51,000m3 @ 2500m3/d) | 20 | 20 | 0% | 0% | 20 | | 17-Sep-21 | 06-Oct-21 | 09-Sep-21 | 28-Sep-21 | -8 | | | | 17-Sep-21 | 06-Oct-21, Fill up +6 to +12mPD at ACC Building & Substation (Stage 4) |
| 08-3050(6) | Fill up +7.5 to +11&13mPD at East Edge Area (Stage 6) (66,000m3 @ 2500m3/d) | 26 | 26 | 0% | 0% | 26 | | 29-Oct-21 | 23-Nov-21 | 21-Oct-21 | 15-Nov-21 | -8 | | | | | 29-Oct-21 |
| 08-3060(6) | Fill up +7.5 to +11&12mPD at West Edge Area (Stage 5) (55,000m3 @ 2500m3/d) | 22 | 22 | 0% | 0% | 22 | | 07-Oct-21 | 28-Oct-21 | 29-Sep-21 | 20-Oct-21 | -8 | | | | 07-Oct-21 | |
| EP_SP_66_12-WP6A-M44.08.1.2.1.6.4 Surcharge Period | | | | | | | | | | | | | | | | | |
| 08-3100(6) | Loading @ +11&12mPD at Process Building (West) (Stage 2) | 180 | 180 | 1.11% | 1.11% | 178 | | 29-Jul-21 A | 24-Jan-22 | 16-Sep-21 | 12-Mar-22 | 47 | | 16-Jul-21 A | | | |
| 08-3110(6) | Loading @ +12mPD at TH & CCCW Building (Stage 3) | 180 | 180 | 0% | 0% | 180 | | 17-Sep-21 | 15-Mar-22 | 09-Sep-21 | 07-Mar-22 | -8 | | | | 17-Sep-21 | |
| 08-3110-1(6) | Loading @ +12mPD at ACC Building & Substation (Stage 4) | 180 | 180 | 0% | 0% | 180 | | 07-Oct-21 | 04-Apr-22 | 29-Sep-21 | 27-Mar-22 | -8 | | | | 07-Oct-21 | |
| 08-3120-1(6) | Loading @ +11&12mPD at West Edge Area (Stage 5) | 180 | 180 | 0% | 0% | 180 | | 29-Oct-21 | 26-Apr-22 | 12-Dec-21 | 09-Jun-22 | 44 | | | | | 29-Oct-21 |
| EP_SP_66_12-WP6A-M44.08.1.2.1.6.7 Surcharge Removal | | | | | | | | | | | | | | | | | |
| 08-3170(6) | Remove Surcharge at Process Building (East) (Stage 1) (109,000m3 @ 4000m3/d) | 27 | 27 | 0% | 0% | 27 | Start On or After | 02-Aug-21* | 28-Aug-21 | 26-Dec-21 | 21-Jan-22 | 146 | | 02-Aug-21* | | 28-Aug-21, Remove Surcharge at Process Building (East) (Stage 1) | |
| EP_SP_66_12-WP6A-M44.08.1.2.1.1 Instrumentation | | | | | | | | | | | | | | | | | |
| EP_SP_66_12-WP6A-M44.08.1.2.1.1.1 Instruments above +2.5mPD | | | | | | | | | | | | | | | | | |
| EP_SP_66_12-WP6A-M44.08.1.2.1.1.1.7 IWMF Substation (East) | | | | | | | | | | | | | | | | | |
| 08-2060 (M42) | Drilling and installation of Instrumentation (11hrs.) | 88 | 88 | 0% | 0% | 88 | | 29-Sep-21 | 25-Dec-21 | 22-Nov-21 | 17-Feb-22 | 54 | | | | 29-Sep-21 | |
| EP_SP_66_12-WP6A-M44.08.1.2.1.1.1.8 IWMF Substation (South) | | | | | | | | | | | | | | | | | |
| 08-2070 (M42) | Drilling and installation of Instrumentation (8hrs.) | 64 | 64 | 0% | 0% | 64 | | 18-Oct-21 | 20-Dec-21 | 16-Dec-21 | 17-Feb-22 | 59 | | | | | 18-Oct-21 |
| EP_SP_66_12-WP6A-M44.08.1.2.1.2 PVD Remedial Works | | | | | | | | | | | | | | | | | |
| 08-1390 (M34)15 | Install Sand Drains at Zone D (approx. 62 nr @ 4nr/day/2 set of equipment) | 16 | 16 | 0% | 0% | 16 | | 31-Jul-21 | 15-Aug-21 | 30-Nov-21 | 15-Dec-21 | 122 | | 31-Jul-21 | | 15-Aug-21, Install Sand Drains at Zone D (approx. 62 nr @ 4nr/day/2 set of equipment) | |
| 08-1390 (M34)20 | GI for ground condition varification at other Zone for PVD (10 nr approx @0.5 nr/day) Inc Report | 28 | 28 | 0% | 0% | 28 | | 31-Jul-21 | 27-Aug-21 | 18-Nov-21 | 15-Dec-21 | 110 | | 31-Jul-21 | | 27-Aug-21, GI for ground condition varification at other Zone for PVD (10 nr approx @0.5 nr/day) Inc Report | |
| 08-1390 (M34)30 | Lay Surcharge at remedial works area | 30 | 30 | 0% | 0% | 30 | | 31-Jul-21 | 29-Aug-21 | 16-Nov-21 | 15-Dec-21 | 108 | | 31-Jul-21 | | 29-Aug-21, Lay Surcharge at remedial works area | |
| 08-1390 (M34)40 | Surcharge Period at remedial area | 180 | 180 | 0% | 0% | 180 | | 30-Aug-21 | 25-Feb-22 | 16-Dec-21 | 13-Jun-22 | 108 | | | | 30-Aug-21 | |
| EP_SP_66_12-WP6A-M44.08.1.2.2 Breakwater | | | | | | | | | | | | | | | | | |

3-Month Rolling Programme (July 2021)

- Remaining Work
- Actual Work
- Critical Remaining Work
- Milestone
- Actual Milestone
- Critical Milestone

| Activity ID | Activity Name | Original Duration | At Completion Duration | Duration % Complete | Activity % Complete | Remaining Duration | Primary Constraint | Current Start | Current Finish | Late Start | Late Finish | Total Float | M44 Remarks | 2021 | | | | |
|---|---|-------------------|------------------------|---------------------|---------------------|--------------------|--------------------|--------------------|------------------|------------------|------------------|-------------|-------------|--------|--------|--------|--------|--|
| | | | | | | | | | | | | | | Jul 44 | Aug 45 | Sep 46 | Oct 47 | |
| 08-1280 | Rubble Mound Laying (100,000m3 approx. @550m3/d) | 188 | 342 | 92.55% | 92.55% | 14 | | 06-Sep-20 A | 13-Aug-21 | 25-Apr-22 | 08-May-22 | 268 | | | | | | |
| 08-1285(1) | Prefabrication for Caisson | 180 | 452 | 75% | 75% | 45 | | 19-Jun-20 A | 13-Sep-21 | 25-Mar-22 | 08-May-22 | 237 | | | | | | |
| 08-1290 | Caisson Laying (Total 29hrs, @2 hrs/week) | 150 | 294 | 50% | 50% | 75 | | 24-Dec-20 A | 13-Oct-21 | 25-Mar-22 | 07-Jun-22 | 237 | | | | | | |
| 08-1295(3) | Caisson Infill, Solid ballast, toe protection, precast concrete blocks ..etc Laying | 200 | 337 | 40.5% | 40.5% | 119 | | 25-Dec-20 A | 26-Nov-21 | 10-May-22 | 05-Sep-22 | 283 | | | | | | |
| EP_SP_66_12-WP6A-M44.08.1.2.3 Seawall and Berth at Marine Access | | 30 | 164 | 0% | | 30 | | 19-Mar-21 A | 29-Aug-21 | 21-Sep-21 | 20-Oct-21 | 52 | | | | | | |
| 08-1320(5A) | Caisson Infill, Solid ballast, toe protection, precast concrete blocks ..etc Laying | 30 | 164 | 0% | 0% | 30 | | 19-Mar-21 A | 29-Aug-21 | 21-Sep-21 | 20-Oct-21 | 52 | | | | | | |
| EP_SP_66_12-WP6A-M44.09 Foundation Works | | 14 | 143 | 0% | | 120 | | 08-Jul-21 A | 27-Nov-21 | 01-Sep-21 | 29-Dec-21 | 32 | | | | | | |
| EP_SP_66_12-WP6A-M44.09.0 Site Investigation and Preliminary Pile | | 14 | 143 | 0% | | 120 | | 08-Jul-21 A | 27-Nov-21 | 01-Sep-21 | 29-Dec-21 | 32 | | | | | | |
| 09-1000 | Ground Investigation | 14 | 143 | 0% | 0% | 120 | | 08-Jul-21 A | 27-Nov-21 | 01-Sep-21 | 29-Dec-21 | 32 | | | | | | |
| EP_SP_66_12-WP6A-M44.15 Works By CLP | | 585 | 585 | 0% | | 585 | | 28-Mar-23 | 03-Nov-24 | 20-Mar-23 | 14-Dec-24 | 41 | | | | | | |
| EP_SP_66_12-WP6A-M44.15.1 Installation of Transmission System | | 120 | 120 | 0% | | 120 | | 28-Mar-23 | 26-Jul-23 | 20-Mar-23 | 02-Jul-24 | 342 | | | | | | |
| 15-0800 | 450 days Prior to Commencement of System Commissioning Test | 0 | 0 | 0% | 0% | 0 | | 30-Apr-23 | | 21-Mar-23 | | -40 | | | | | | |
| 15-0900 | Completion of Civil Provision for Transmission | 0 | 0 | 0% | 0% | 0 | | | 28-Mar-23 | | 20-Mar-23 | -8 | | | | | | |
| 15-1000 | Construction of Transmission System | 90 | 90 | 0% | 0% | 90 | | 29-Mar-23 | 26-Jun-23 | 05-Mar-24 | 02-Jun-24 | 342 | | | | | | |
| 15-1002 | Cable Testing | 30 | 30 | 0% | 0% | 30 | | 27-Jun-23 | 26-Jul-23 | 03-Jun-24 | 02-Jul-24 | 342 | | | | | | |
| EP_SP_66_12-WP6A-M44.15.2 Remaining Installation Works by CLP | | 150 | 150 | 0% | | 150 | | 03-Nov-23 | 31-Mar-24 | 03-Nov-23 | 30-Sep-24 | 183 | | | | | | |
| 15-1005 | Handover of CLP Equipment Room for Telecom / Digital s / Security / Metering equipment Installation and testing | 60 | 60 | 0% | 0% | 60 | Start On | 03-Nov-23* | 01-Jan-24 | 03-Nov-23 | 01-Jan-24 | 0 | | | | | | |
| 15-1010 | 132kV cable termination at IWMF 132kV switchgear (2 panels) and associated HVAC circuits | 30 | 30 | 0% | 0% | 30 | | 02-Jan-24 | 31-Jan-24 | 03-Jul-24 | 01-Aug-24 | 183 | | | | | | |
| 15-1010-1(6) | Overall testing and commissioning of 2 x CHS-IWMF circuits | 60 | 60 | 0% | 0% | 60 | | 01-Feb-24 | 31-Mar-24 | 02-Aug-24 | 30-Sep-24 | 183 | | | | | | |
| EP_SP_66_12-WP6A-M44.15.3 Metering & Energization | | 216 | 216 | 0% | | 216 | | 01-Apr-24 | 03-Nov-24 | 01-Oct-24 | 14-Dec-24 | 41 | | | | | | |
| 15-1020 | Incoming Power System Final Inspection and Metering works | 30 | 30 | 0% | 0% | 30 | | 01-Apr-24 | 30-Apr-24 | 01-Oct-24 | 30-Oct-24 | 183 | | | | | | |
| 15-1030 | Energization of Incoming Power Supply Main System | 0 | 0 | 0% | 0% | 0 | Start On or After | 03-Nov-24* | | 30-Oct-24 | | -3 | | | | | | |
| 15-1040 | Energization of Incoming Power Supply Sub System | 0 | 0 | 0% | 0% | 0 | Start On or After | 03-Nov-24* | | 14-Dec-24 | | 41 | | | | | | |
| 15-1050 | Export Power System Final Inspection and Metering works | 30 | 30 | 0% | 0% | 30 | | 01-Apr-24 | 30-Apr-24 | 01-Oct-24 | 30-Oct-24 | 183 | | | | | | |
| 15-1060 | Connection to Grid | 0 | 0 | 0% | 0% | 0 | | | 30-Apr-24 | | 30-Oct-24 | 183 | | | | | | |
| EP_SP_66_12-WP6A-M44.16 Testing & Commissioning | | 30 | 30 | 0% | | 30 | | 02-Aug-21 | 31-Aug-21 | 29-Jun-22 | 28-Jul-22 | 331 | | | | | | |
| EP_SP_66_12-WP6A-M44.16.22 SAT & System Commissioning Tests | | 30 | 30 | 0% | | 30 | | 02-Aug-21 | 31-Aug-21 | 29-Jun-22 | 28-Jul-22 | 331 | | | | | | |
| EP_SP_66_12-WP6A-M44.16.22.20 Civil and Builder Works Completion Inspections | | 30 | 30 | 0% | | 30 | | 02-Aug-21 | 31-Aug-21 | 29-Jun-22 | 28-Jul-22 | 331 | | | | | | |
| 16-1900-1(6) | Ground resistance test | 30 | 30 | 0% | 0% | 30 | | 02-Aug-21 | 31-Aug-21 | 29-Jun-22 | 28-Jul-22 | 331 | | | | | | |

3-Month Rolling Programme (July 2021)

Remaining Work
 Actual Work
 Critical Remaining Work
 Milestone
 Actual Milestone
 Critical Milestone