

## Appendix A Master Programme







Activity ID	Activity Name	Original Duration	At Completion Duration	Duration % Complete	Activity % Complete	Remaining Duration	Primary Constraint	Start	Finish	Current Start	Current Finish	Late Start	Late Finish	Total Float	M36 Remarks	2020				2021			
																Nov 36	Dec 37	Jan 38	Feb 39	Nov 36	Dec 37	Jan 38	Feb 39
EP_SP_66_12-WP5A-M35-4	Programme for Design and Construction Works WP5A-M	3484	3484	31.69%		2380		22-Nov-17 A	06-Jun-27	30-Nov-20	06-Jun-27	13-Sep-20	06-Jun-27	0									
EP_SP_66_12-WP5A-M35-4.01	Key Dates	3484	3484	32.09%		2366		22-Nov-17 A	06-Jun-27	13-Dec-20	06-Jun-27	13-Dec-20	06-Jun-27	0									
EP_SP_66_12-WP5A-M35-4.01.1	Contractual Key Dates	2788	2788	87.52%		348		22-Nov-17 A	10-Jul-25	27-Jul-24	10-Jul-25	27-Jul-24	10-Jul-25	0									
EP_SP_66_12-WP5A-M35-4.01.1.1	Design and Construction Phase	2732	2732	89.31%		292		22-Nov-17 A	15-May-25	27-Jul-24	15-May-25	27-Jul-24	15-May-25	0									
01-1000	Contract Award/Date of Acceptance of Tender	0	0	100%	100%	0	Mandatory Start	22-Nov-17 A															
01-1010	Date of Commencement of the Design and the Works	0	0	100%	100%	0	Mandatory Start	15-Dec-17 A															
01-1015(3)(M12)	Original Substantial Completion of the Works	0	0	0%	0%	0	Mandatory Finish		27-Jul-24*		27-Jul-24		27-Jul-24	0									
01-1020	Extended Substantial Completion of The Works	0	0	0%	0%	0	Mandatory Finish		15-May-25*		15-May-25		15-May-25	0									
EP_SP_66_12-WP5A-M35-4.01.1.3	Extension of Time Granted	289	289	0%		289		30-Jul-24	15-May-25	30-Jul-24	15-May-25	30-Jul-24	15-May-25	0									
01-1015-1(3)(M12)	Extension of time granted (Claim No.1 to No.32) *Claim No.9 excluded	234	234	0%	0%	234	Mandatory Finish	30-Jul-24	15-May-25*	30-Jul-24	15-May-25	30-Jul-24	15-May-25	0									
01-1060	Issuance of FS Certificate	0	0	0%	0%	0	Mandatory Finish		18-Dec-24*		18-Dec-24		18-Dec-24	0									
EP_SP_66_12-WP5A-M35-4.01.1.2	Operation Phase	56	56	0%		56		16-May-25	10-Jul-25	16-May-25	10-Jul-25	16-May-25	10-Jul-25	0									
01-1030	Commencement of Operation	0	0	0%	0%	0	Mandatory Start	16-May-25*		16-May-25		16-May-25		0									
01-1230	Issue Certificate of Completion of the Works (56 days after Substantial Completion)	0	0	0%	0%	0	Finish On or Before		10-Jul-25*		10-Jul-25		10-Jul-25	0									
EP_SP_66_12-WP5A-M35-4.01.2	Planned Completion Dates	1710	1710	0%		1710		30-Sep-22	06-Jun-27	30-Sep-22	06-Jun-27	14-Mar-23	06-Jun-27	0									
01-1030(5a)	Grid Connection Agreement (GCA)	0	0	0%	0%	0	Finish On		08-Feb-24*		08-Feb-24		08-Feb-24	0									
01-1040	Incoming Power Energization to IWMF Substation	0	0	0%	0%	0			04-Sep-24		04-Sep-24		12-Aug-24	-23									
01-1050	Export Power to Grid	0	0	0%	0%	0			04-Oct-24		04-Oct-24		21-Dec-24	78									
01-1070	Completion of Civil Provision for Transmission	0	0	0%	0%	0			30-Sep-22		30-Sep-22		14-Mar-23	165									
01-1080	Commencement of C1.3.4.11 System Commissioning Test	0	0	0%	0%	0		24-Oct-24		24-Oct-24		26-Aug-24	-59										
01-1090	Completion of C1.3.4.11 System Commission Test	0	0	0%	0%	0			18-Jan-25		18-Jan-25		07-Dec-24	-42									
01-1100	Completion of 90 Days Plant Commissioning Test	0	0	0%	0%	0			06-Jun-25		06-Jun-25		21-Mar-25	-77									
01-1110(3)(M15)	Issue of Certificate of Substantial Completion for the Works	0	0	0%	0%	0			31-Jul-25		31-Jul-25		15-May-25	-77									
01-1110-1(5a)	Completion of 180 Days for Installation, T&C of CCTV System and Onshore Power System at Portion 2	0	0	0%	0%	0	Finish On		09-Feb-26*		09-Feb-26		09-Feb-26	0									
01-1110-2(5a)	Replacement of Onshore Cranes within 2 yrs at Portion 2	0	0	0%	0%	0			06-Jun-27		06-Jun-27		06-Jun-27	0									
EP_SP_66_12-WP5A-M35-4.01.3	Dates of Site Possessions	2786	2786	39.3%		1691		15-Dec-17 A	01-Aug-25	13-Dec-20	01-Aug-25	13-Dec-20	16-May-25	-77									
01-1120	Possession of Portion 1	0	0	100%	100%	0			15-Dec-17 A														
01-1130	Possession of Portion 1A	0	0	100%	100%	0			15-Dec-17 A														
01-1140	Possession of Portion 1B	0	0	100%	100%	0			15-Dec-17 A														
01-1150	Possession of Portion 2	0	0	0%	0%	0		01-Aug-25		01-Aug-25		16-May-25	-77										
01-1160	Possession of Portion 3	0	0	0%	0%	0	Finish On		13-Dec-20*		13-Dec-20		13-Dec-20	0									◆ Possession of Portion 3,
01-1170	Possession of Portion 4	0	0	0%	0%	0	Finish On		13-Dec-20*		13-Dec-20		13-Dec-20	0									◆ Possession of Portion 4,
01-1180	Possession of Portion 5	0	0	0%	0%	0	Finish On		13-Dec-20*		13-Dec-20		13-Dec-20	0									◆ Possession of Portion 5,
01-1190	Possession of Portion 6	0	0	0%	0%	0	Start On	16-May-25*		16-May-25		16-May-25	0										
01-1200	Possession of Portion 7	0	0	100%	100%	0	Finish On or Before		05-Jan-18 A														
01-1210	Possession of Portion 7A	0	0	100%	100%	0	Finish On or Before		07-Dec-18 A														
01-1210(5a)	Possession of Portion 8	0	0	100%	100%	0	Start On	29-Apr-20 A															
EP_SP_66_12-WP5A-M35-4.03	Licence/Permit Applications	979	974	72.42%		270		27-Dec-18 A	26-Aug-21	30-Nov-20	26-Aug-21	31-Oct-20	24-Apr-22	241									
EP_SP_66_12-WP5A-M35-4.03.1	License/Permit for Construction	904	756	70.13%		270		02-Aug-19 A	26-Aug-21	30-Nov-20	26-Aug-21	31-Oct-20	02-Mar-22	188									
03-1090	EPD APCO(SP) License for Concrete Batching Plant	270	270	0%	0%	270		30-Nov-20	26-Aug-21	30-Nov-20	26-Aug-21	22-Apr-21	16-Jan-22	143									30-Nov-20
03-1360(2)	CNP for 24Hrs	182	595	40.11%	40.11%	109	Finish On	02-Aug-19 A	18-Mar-21*	30-Nov-20	18-Mar-21	31-Oct-20	16-Feb-21	-30									
03-1370_1(M34)	Landscape and Visual Plan	180	180	0%	0%	180		30-Nov-20	28-May-21	30-Nov-20	28-May-21	04-Sep-21	02-Mar-22	278									30-Nov-20
EP_SP_66_12-WP5A-M35-4.03.4	Fire Services Installations (FSI) Certificate	550	694	82.91%		94		10-Apr-19 A	03-Mar-21	30-Nov-20	03-Mar-21	03-Nov-20	03-May-21	61									
EP_SP_66_12-WP5A-M35-4.03.4.3	Fire Engineering Report	550	694	82.91%		94		10-Apr-19 A	03-Mar-21	30-Nov-20	03-Mar-21	30-Jan-21	03-May-21	61									

3-Month Rolling Programme (November 2020)

Remaining Work      ◆ Actual Milestone  
 Actual Work      ◆ Critical Milestone  
 Critical Remaining Work  
 Milestone

Activity ID	Activity Name	Original Duration	At Completion Duration	Duration % Complete	Activity % Complete	Remaining Duration	Primary Constraint	Start	Finish	Current Start	Current Finish	Late Start	Late Finish	Total Float	M36 Remarks	2020				2021					
																Nov 36	Dec 37	Jan 38	Feb 39	Nov 36	Dec 37	Jan 38	Feb 39		
05-3000	Perparation and Submission of Fire Engineering Report to FSD	550	680	85.45%	85.45%	80		10-Apr-19A	17-Feb-21	30-Nov-20	17-Feb-21	30-Jan-21	19-Apr-21	61											
05-4450	Approval of Fire Engineering Report by FSD	14	14	0%	0%	14		18-Feb-21	03-Mar-21	18-Feb-21	03-Mar-21	20-Apr-21	03-May-21	61											
<b>EP_SP_66_12-WP5A-M35-4.03.4.1 Fire Services Installations Certificate Inspection</b>																									
03-1555(5a)	General Building Plans and FSI Provision Design Submission to FSD	90	90	0%	0%	90	Finish On or Before	30-Nov-20	27-Feb-21*	30-Nov-20	27-Feb-21	03-Nov-20	31-Jan-21	-27											
<b>EP_SP_66_12-WP5A-M35-4.03.5 Air Pollution Control (Specified Processes) License</b>																									
03-1730(3)	Early Engagement With EPD SP Licensing Department for Information exchange	600	904	66.67%	66.67%	200		27-Dec-18 A	17-Jun-21	30-Nov-20	17-Jun-21	07-Oct-21	24-Apr-22	311											
<b>EP_SP_66_12-WP5A-M35-4.04 General Submissions</b>																									
<b>EP_SP_66_12-WP5A-M35-4.04.1 Contractor's Plans Submission and Approval</b>																									
04-1100(1)	Technical Resources Plan (TRP)	240	1107	87.5%	30%	30	Finish On or Before	19-Dec-17 A	29-Dec-20*	30-Nov-20	29-Dec-20	02-Dec-20	31-Dec-20	2									29-Dec-20*, Technical Resources Plan (TRP), Techn		
04-1200(1)	Works Plan (WP)	90	1108	66.67%	30%	30	Finish On or Before	18-Dec-17 A	29-Dec-20*	30-Nov-20	29-Dec-20	02-Dec-20	31-Dec-20	2									29-Dec-20*, Works Plan (WP), Works Plan (WP), 2		
04-1400(1)	Operation Plan (OP)	240	1108	87.5%	87.5%	30	Finish On or Before	18-Dec-17 A	29-Dec-20*	30-Nov-20	29-Dec-20	02-Dec-20	31-Dec-20	2									29-Dec-20*, Operation Plan (OP), Operation Plan (O		
<b>EP_SP_66_12-WP5A-M35-4.04.1.1 Provisional Assessment (PA)</b>																									
04-1500(1)10	Preliminary Assess mart	180	180	0%	0%	180		30-Nov-20	28-May-21	30-Nov-20	28-May-21	22-Apr-21	18-Oct-21	143											
<b>EP_SP_66_12-WP5A-M35-4.05 Design Submissions</b>																									
<b>EP_SP_66_12-WP5A-M35-4.05.01 AIP Design Package Submissions</b>																									
<b>EP_SP_66_12-WP5A-M35-4.05.01.01 AIP Process and Layout Design (2.1)</b>																									
<b>EP_SP_66_12-WP5A-M35-4.05.01.01.1 MSW treatment process design for incineration (2.1.01)</b>																									
05-1000	Incineration System	105	223	100%	100%	0	Start On or After	21-Mar-18 A	30-Oct-18 A																
05-1010	Heat Recovery Boiler	105	223	100%	100%	0	Start On or After	21-Mar-18 A	30-Oct-18 A																
05-1020	Ash Cranes	105	244	100%	100%	0	Start On or After	07-Sep-18 A	09-May-19 A																
05-1030	Leachate Collection and Treatment	105	245	100%	100%	0	Start On or After	25-May-18 A	25-Jan-19 A																
05-1040	Waste Water Treatment System	105	361	100%	100%	0	Start On or After	06-Jul-18 A	02-Jul-19 A																
05-1050	Overall Plan Water Scheme	105	350	100%	100%	0	Start On or After	24-May-18 A	09-May-19 A																
05-1060	Boiler Feed Water System	105	223	100%	100%	0	Start On or After	21-Mar-18 A	30-Oct-18 A																
<b>EP_SP_66_12-WP5A-M35-4.05.01.01.2 MSW treatment process design for mechanical treatment</b>																									
05-1090	Mechanical Treatment Plant	105	105	0%	0%	105	Start On or After	30-Nov-20*	14-Mar-21	30-Nov-20	14-Mar-21	30-Nov-20	14-Mar-21	0									30-Nov-20*		
05-1100	Water Treatment Plant and Boiler Water Treatment (Demin Unit) Plant	105	345	100%	100%	0	Start On or After	07-Aug-18 A	18-Jul-19 A																
<b>EP_SP_66_12-WP5A-M35-4.05.01.01.3 Waste heat recovery and Power generation system (2.1.03)</b>																									
05-1110	Power Island (Steam Turbine Generator, Pressure Reducing and Desuperheating Station, Air Cooled Condenser)	105	323	100%	100%	0		24-May-18 A	12-Apr-19 A																
05-1120	Closed Circuit Cooling Water System	105	323	100%	100%	0	Start On or After	24-May-18 A	12-Apr-19 A																
05-1130	Compressed Air Plants	105	232	100%	100%	0	Start On or After	04-Jul-18 A	21-Feb-19 A																
<b>EP_SP_66_12-WP5A-M35-4.05.01.01.4 Flue gas treatment process design for incineration (2.1.04)</b>																									
05-1070	Flue Gas Treatment System	105	242	100%	100%	0	Start On or After	15-Mar-18 A	12-Nov-18 A																
05-1080	Boiler ash and APC residue handling and solidification	105	199	100%	100%	0	Start On or After	25-May-18 A	10-Dec-18 A																
<b>EP_SP_66_12-WP5A-M35-4.05.01.01.5 Logistic arrangement design for MSW and Ash and Re</b>																									
05-1140	Weighbridge Systems	105	152	100%	100%	0	Start On or After	05-Sep-18 A	04-Feb-19 A																
05-1150	Waste Crane and Grapple System	105	221	100%	100%	0	Start On or After	05-Jul-18 A	11-Feb-19 A																
05-1160	Mechanical Shredder	105	243	100%	100%	0	Start On or After	23-Nov-18 A	24-Jul-19 A																
<b>EP_SP_66_12-WP5A-M35-4.05.01.01.6 Site Master Layout Plan and Plant Layout (2.1.06)</b>																									
05-3020	Site Master Layout Plan and Plant Layout	60	984	40%	65%	36		27-Apr-18 A	04-Jan-21	30-Nov-20	04-Jan-21	05-Dec-20	09-Jan-21	5									04-Jan-21, Site Master Layout Plan and Plant L		
<b>EP_SP_66_12-WP5A-M35-4.05.01.01.7 Statutory Fire Compliance (2.1.25)</b>																									
05-2990	Fire Safety Compliance	30	724	0%	0%	124		10-Apr-19 A	02-Apr-21	30-Nov-20	02-Apr-21	31-Dec-20	03-May-21	31											
<b>EP_SP_66_12-WP5A-M35-4.05.01.02 AIP Ground Treatment, Reclamation, Seawall, Breakwater,</b>																									
05-1170	Deep Cement Mixing Design (2.2.00)	105	136	100%	100%	0	Start On or After	27-Mar-18 A	10-Aug-18 A																
05-1180	Ground Investigation Proposal (2.2.01.01)	105	143	100%	100%	0	Start On or After	12-Feb-18 A	05-Jul-18 A																
05-1190	Preliminary Geotechnical Interpretative Report (2.2.01.02)	105	120	100%	100%	0	Start On or After	03-Apr-18 A	31-Jul-18 A																

**3-Month Rolling Programme (November 2020)**

	Remaining Work		Actual Milestone
	Actual Work		Critical Milestone
	Critical Remaining Work		
	Milestone		

Activity ID	Activity Name	Original Duration	At Completion Duration	Duration % Complete	Activity % Complete	Remaining Duration	Primary Constraint	Start	Finish	Current Start	Current Finish	Late Start	Late Finish	Total Float	M36 Remarks	2020				2021						
																Nov	Dec	Jan	Feb	Nov	Dec	Jan	Feb			
																36	37	38	39	36	37	38	39			
05-1200	DCM Static Load Test Proposal (2.2.03)	110	224	100%	100%	0	Start On or After	03-Apr-18 A	13-Nov-18 A																	
05-1280	Draft plan of 2D/3D modelling works for seawall and breakwater design (2.2.05)	135	957	88.89%	80%	15	Start On	03-May-18 A	14-Dec-20	30-Nov-20	14-Dec-20	06-Feb-21	20-Feb-21	68												14-Dec-20, Draft plan of 2D/3D modelling works for seawall and b
05-2930	Reclamation design (2.2.07)	105	91	100%	100%	0	Start On or After	03-Aug-18 A	02-Nov-18 A																	
05-2940	Seawall design (2.2.08)	135	323	100%	100%	0	Start On or After	11-Apr-18 A	28-Feb-19 A																	
05-2950	Breakwater design (2.2.09)	135	293	100%	100%	0	Start On or After	02-May-18 A	19-Feb-19 A																	
05-2960	Berth design (2.2.10)	135	342	100%	100%	0	Start On or After	11-Apr-18 A	19-Mar-19 A																	
05-2970	Onshore crane Facility (2.2.11)	135	135	0%	0%	135	Start On or After	30-Nov-20*	13-Apr-21	30-Nov-20	13-Apr-21	03-May-21	14-Sep-21	154												30-Nov-20*
05-2980	Onshore vessel power supply system (2.2.12)	135	132	77.78%	77.78%	30		20-Aug-20 A	29-Dec-20	30-Nov-20	29-Dec-20	31-Mar-21	29-Apr-21	121												29-Dec-20, Onshore vessel power supply system (2.
<b>EP_SP_66_12-WP5A-M35-4.05.01.03 AIP Incineration Plant Buildings (2.3)</b>		<b>1079</b>	<b>1113</b>	<b>83.5%</b>		<b>178</b>		<b>10-May-18 A</b>	<b>26-May-21</b>	<b>30-Nov-20</b>	<b>26-May-21</b>	<b>23-Oct-20</b>	<b>13-Aug-22</b>	<b>444</b>												
<b>EP_SP_66_12-WP5A-M35-4.05.01.03.1 General Layout Drawings and Fire Safety Strategy (2.3.01)</b>		<b>984</b>	<b>984</b>	<b>86.28%</b>		<b>135</b>		<b>04-Aug-18 A</b>	<b>13-Apr-21</b>	<b>30-Nov-20</b>	<b>13-Apr-21</b>	<b>05-Dec-20</b>	<b>24-May-21</b>	<b>41</b>												
05-1210	Process Building	135	819	77.78%	5%	30	Start On or After	03-Oct-18 A	29-Dec-20	30-Nov-20	29-Dec-20	05-Dec-20	03-Jan-21	5												29-Dec-20, Process Building, Process Building, 29-
05-1220	ACC Equipment Structure	135	819	77.78%	5%	30		03-Oct-18 A	29-Dec-20	30-Nov-20	29-Dec-20	05-Dec-20	03-Jan-21	5												29-Dec-20, ACC Equipment Structure, ACC Equipm
05-1230	Turbin Hall Building	135	410	100%	100%	0	Start On or After	30-Aug-18 A	14-Oct-19 A																	
05-1240	Compressor and CCCW Building	60	433	100%	100%	0	Start On or After	30-Aug-18 A	06-Nov-19 A																	
05-1250	Chimney and viewing platform	135	135	0%	0%	135		30-Nov-20	13-Apr-21	30-Nov-20	13-Apr-21	10-Jan-21	24-May-21	41												30-Nov-20
05-1260	Elevated Drive Way and Associated Structures	135	464	100%	100%	0	Start On or After	04-Aug-18 A	11-Nov-19 A																	
05-1270	Reception Pavilion	135	580	100%	100%	0	Start On or After	04-Aug-18 A	06-Mar-20 A																	
<b>EP_SP_66_12-WP5A-M35-4.05.01.03.2 Foundation design (2.3.01)</b>		<b>557</b>	<b>631</b>	<b>75.76%</b>		<b>135</b>		<b>23-Jul-19 A</b>	<b>13-Apr-21</b>	<b>30-Nov-20</b>	<b>13-Apr-21</b>	<b>09-Jun-21</b>	<b>13-Aug-22</b>	<b>487</b>												
05-3030	Process Building Waste Burker, Tipping Hall, Basin Area and Workshop	43	154	0%	5%	43	Start On or After	11-Aug-20 A	11-Jan-21	30-Nov-20	11-Jan-21	09-Jun-21	21-Jul-21	191												11-Jan-21, Process Building Waste Bun
05-3040	ACC Equipment Structure	43	154	0%	0%	43	Start On or After	11-Aug-20 A	11-Jan-21	30-Nov-20	11-Jan-21	19-Sep-21	31-Oct-21	293												11-Jan-21, ACC Equipment Structure, AC
05-3050	Turbin Hall Building	161	59	100%	100%	0	Start On or After	23-Jul-19 A	20-Sep-19 A																	
05-3060	Compressor and CCCW Building	30	137	100%	100%	0	Start On or After	13-Mar-20 A	28-Jul-20 A																	
05-3070	Chimney and viewing platform	135	135	0%	0%	135	Start On or After	30-Nov-20*	13-Apr-21	30-Nov-20	13-Apr-21	05-Jul-21	16-Nov-21	217												30-Nov-20*
05-3080	Elevated Drive Way and Associated Structures	43	69	100%	100%	0	Start On or After	14-Jan-20 A	23-Mar-20 A																	
05-3090	Reception Pavilion	135	135	0%	0%	135	Start On or After	30-Nov-20*	13-Apr-21	30-Nov-20	13-Apr-21	01-Apr-22	13-Aug-22	487												30-Nov-20*
<b>EP_SP_66_12-WP5A-M35-4.05.01.03.3 Structural design (2.3.02)</b>		<b>640</b>	<b>866</b>	<b>78.91%</b>		<b>135</b>		<b>30-Nov-18 A</b>	<b>13-Apr-21</b>	<b>30-Nov-20</b>	<b>13-Apr-21</b>	<b>13-Feb-21</b>	<b>27-Jun-21</b>	<b>75</b>												
05-1290	Process Building	190	466	100%	100%	0	Start On or After	11-Mar-19 A	19-Jun-20 A																	
05-1300	ACC Equipment Structure	98	59	100%	0%	0	Start On or After	23-Jul-19 A	20-Sep-19 A																	
05-1310	Turbin Hall Building	190	154	100%	100%	0	Start On or After	30-Nov-18 A	03-May-19 A																	
05-1320	Compressor and CCCW Building	167	98	100%	100%	0	Start On or After	14-Jun-19 A	20-Sep-19 A																	
05-1330	Chimney and viewing platform	167	684	19.16%	5%	135	Start On or After	31-May-19 A	13-Apr-21	30-Nov-20	13-Apr-21	13-Feb-21	27-Jun-21	75												
05-1340	Chimney, Elevated Drive Way and associated structures and Reception Pavilion	170	237	100%	100%	0	Start On or After	19-Mar-19 A	11-Nov-19 A																	
05-1350	Reception Pavilion Structural Design	105	101	100%	100%	0	Start On or After	29-Jul-19 A	07-Nov-19 A																	
<b>EP_SP_66_12-WP5A-M35-4.05.01.03.4 Electrical and instrumentation works design (2.3.03)</b>		<b>315</b>	<b>456</b>	<b>100%</b>		<b>0</b>		<b>10-May-18 A</b>	<b>09-Aug-19 A</b>																	
05-3150	11kV/380V Power Transformers and 11kV Earthing Transformer	105	315	100%	100%	0	Start On or After	06-Sep-18 A	18-Jul-19 A																	
05-3160	E&IC Package 1 (Process Island)	105	391	100%	100%	0		10-May-18 A	05-Jun-19 A																	
05-3170	E&IC Package 2 (Power Island)	105	288	100%	100%	0	Start On or After	25-Oct-18 A	09-Aug-19 A																	
05-3175(3)(M12)	E&IC Package 3 (Balance of Plant)	105	288	100%	100%	0		25-Oct-18 A	09-Aug-19 A																	
<b>EP_SP_66_12-WP5A-M35-4.05.01.03.8 Operation Management System (2.3.03.04)</b>		<b>105</b>	<b>270</b>	<b>100%</b>		<b>0</b>		<b>10-May-18 A</b>	<b>04-Feb-19 A</b>																	
05-3180	Supervisory Control/Data Acquisition/Distributed Control (SCADA/DCS) System (12 Packages)	105	221	100%	100%	0	Start On or After	10-May-18 A	17-Dec-18 A																	
05-3210	Automatic License Plate and Container Recognition System (ALPCRS)	105	152	100%	100%	0	Start On or After	05-Sep-18 A	04-Feb-19 A																	
<b>EP_SP_66_12-WP5A-M35-4.05.01.03.5 Mechanical works design (2.3.04)</b>		<b>500</b>	<b>433</b>	<b>100%</b>		<b>0</b>		<b>17-May-18 A</b>	<b>24-Jul-19 A</b>																	
<b>EP_SP_66_12-WP5A-M35-4.05.01.03.5.1 Plant and Equipment</b>		<b>500</b>	<b>419</b>	<b>100%</b>		<b>0</b>		<b>31-May-18 A</b>	<b>24-Jul-19 A</b>																	

**3-Month Rolling Programme (November 2020)**

- Remaining Work
- Actual Work
- Critical Remaining Work
- Milestone
- ◆ Actual Milestone
- ◆ Critical Milestone

Activity ID	Activity Name	Original Duration	At Completion Duration	Duration % Complete	Activity % Complete	Remaining Duration	Primary Constraint	Start	Finish	Current Start	Current Finish	Late Start	Late Finish	Total Float	M36 Remarks	2020				2021			
																Nov	Dec	Jan	Feb	Nov	Dec	Jan	Feb
																36	37	38	39				
05-2800	Weighbridge Systems	105	152	100%	100%	0	Start On or After	05-Sep-18 A	04-Feb-19 A														
05-2810	Waste Crane and Grapple System	105	221	100%	100%	0	Start On or After	05-Jul-18 A	11-Feb-19 A														
05-2820	Mechanical Shredder	105	243	100%	100%	0	Start On or After	23-Nov-18 A	24-Jul-19 A														
05-2830	Incineration System	105	165	100%	100%	0	Start On or After	31-May-18 A	12-Nov-18 A														
05-2840	Heat Recovery Boiler	105	145	100%	100%	0	Start On or After	08-Jun-18 A	31-Oct-18 A														
05-2850	Boiler Feed Water Systems	105	68	100%	100%	0	Start On or After	05-Sep-18 A	12-Nov-18 A														
05-2860	Ash cranes	105	136	100%	100%	0	Start On or After	24-Dec-18 A	09-May-19 A														
05-2870	Leachate collection and treatment	105	73	100%	100%	0	Start On or After	15-Dec-18 A	26-Feb-19 A														
05-2880	Flue Gas Treatment System	105	184	100%	100%	0	Start On or After	11-Jun-18 A	12-Dec-18 A														
05-2890	Boiler ash and APC residue handling and solidification	105	100	100%	100%	0	Start On or After	24-Dec-18 A	03-Apr-19 A														
05-2900	Steam Turbine Generator (STG) and Pressure Reducing and Desuperheating Station (PRDS)	105	325	100%	100%	0	Start On or After	03-Aug-18 A	24-Jun-19 A														
05-2910	Air cooled condenser	105	325	100%	100%	0	Start On or After	03-Aug-18 A	24-Jun-19 A														
05-2915(3)	Closed Circuit Cooling Water System	105	321	100%	100%	0	Start On or After	31-Jul-18 A	17-Jun-19 A														
05-2920	Compressed Air Plants	105	232	100%	100%	0	Start On or After	04-Jul-18 A	21-Feb-19 A														
EP_SP_66_12-WP5A-M35-4.05.01.03.5.2	Process Pipeworks (Incl. Ductworks) and Valves	105	404	100%	100%	0		24-May-18 A	02-Jul-19 A														
05-1360	Process island (furnace-boiler-FGC)	105	224	100%	100%	0	Start On or After	24-May-18 A	03-Jan-19 A														
05-1370	Pipebridge (Between Process island & Turbine Hall)	105	404	100%	100%	0	Start On or After	24-May-18 A	02-Jul-19 A														
05-1380	Compressed Air Plant area	105	273	100%	100%	0	Start On or After	02-Oct-18 A	02-Jul-19 A														
05-1390	Pipebridge (Between CCCW Area & Turbine Hall)	105	119	100%	100%	0	Start On or After	02-Oct-18 A	29-Jan-19 A														
05-1400	Pipebridge (Between Turbine Hall & ACC Yard)	105	119	100%	100%	0	Start On or After	02-Oct-18 A	29-Jan-19 A														
05-1410	Turbine Hall	105	273	100%	100%	0	Start On or After	02-Oct-18 A	02-Jul-19 A														
05-1420	ACC Yard	105	273	100%	100%	0	Start On or After	02-Oct-18 A	02-Jul-19 A														
05-1540	CCCW Area	105	273	100%	100%	0	Start On or After	02-Oct-18 A	02-Jul-19 A														
EP_SP_66_12-WP5A-M35-4.05.01.03.5.3	Process steel structure support (For equipment, pipir	154	257	100%	100%	0		17-May-18 A	29-Jan-19 A														
05-3100	Process island (furnace-boiler-FGC)	105	246	100%	100%	0	Start On or After	17-May-18 A	18-Jan-19 A														
05-3110	Pipebridge (Between Process island & Turbine Hall)	105	112	100%	100%	0	Start On or After	09-Oct-18 A	29-Jan-19 A														
05-3120	Turbine Hall	105	112	100%	100%	0	Start On or After	09-Oct-18 A	29-Jan-19 A														
05-3130	Pipebridge (Between CCCW Area & Turbine Hall)	105	112	100%	100%	0	Start On or After	09-Oct-18 A	29-Jan-19 A														
05-3140	Pipebridge (Between Turbine Hall & ACC Yard)	105	112	100%	100%	0	Start On or After	09-Oct-18 A	29-Jan-19 A														
EP_SP_66_12-WP5A-M35-4.05.01.03.5.4	Equipment and piping insulation	130	391	100%	100%	0		15-Jun-18 A	11-Jul-19 A														
05-1430	Incineration System	105	150	100%	100%	0	Start On or After	15-Jun-18 A	12-Nov-18 A														
05-1440	Heat Recovery Boiler	105	138	100%	100%	0	Start On or After	15-Jun-18 A	31-Oct-18 A														
05-1450	Boiler Feed Water Systems	105	150	100%	100%	0	Start On or After	15-Jun-18 A	12-Nov-18 A														
05-1460	Flue Gas Treatment System	105	180	100%	100%	0	Start On or After	15-Jun-18 A	12-Dec-18 A														
05-1470	Boiler ash and APC residue handling and solidification	105	292	100%	100%	0	Start On or After	15-Jun-18 A	03-Apr-19 A														
05-1480	Steam Turbine Generator (STG) and Pressure Reducing and Desuperheating Station (PRDS)	105	181	100%	100%	0	Start On or After	11-Jan-19 A	11-Jul-19 A														
05-1490	Air cooled condenser	105	251	100%	100%	0	Start On or After	02-Nov-18 A	11-Jul-19 A														
05-1500	Closed Circuit Cooling Water System	105	321	100%	100%	0	Start On or After	31-Jul-18 A	17-Jun-19 A														
EP_SP_66_12-WP5A-M35-4.05.01.03.6	Fire services installation design (2.3.05)	604	881	70.53%		178		28-Dec-18 A	26-May-21	30-Nov-20	26-May-21	23-Oct-20	03-May-21	-23									
EP_SP_66_12-WP5A-M35-4.05.01.03.6.1	Process Building (2.3.05.01)	604	795	82.62%		105		10-Jan-19 A	14-Mar-21	30-Nov-20	14-Mar-21	19-Jan-21	03-May-21	50									
05-1510	Fire Systems	105	795	0%	5%	105		10-Jan-19 A	14-Mar-21	30-Nov-20	14-Mar-21	19-Jan-21	03-May-21	50									
05-1520	Fire engineering	30	30	0%	0%	30		02-Feb-21	03-Mar-21	02-Feb-21	03-Mar-21	04-Apr-21	03-May-21	61									02-Feb-21

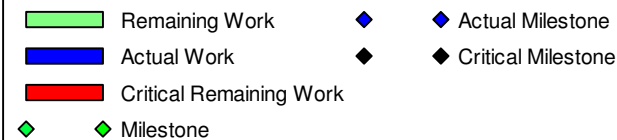
### 3-Month Rolling Programme (November 2020)

■ Remaining Work      ◆ Actual Milestone  
■ Actual Work      ◆ Critical Milestone  
■ Critical Remaining Work  
◆ Milestone

Integrated Waste Management Facilities, Phase 1

Activity ID	Activity Name	Original Duration	At Completion Duration	Duration % Complete	Activity % Complete	Remaining Duration	Primary Constraint	Start	Finish	Current Start	Current Finish	Late Start	Late Finish	Total Float	M36 Remarks	2020				2021							
																Nov		Dec		Jan		Feb		Jan		Feb	
																36	37	38	39	38	39	38	39				
05-1530	FS schematics	105	697	93.33%	5%	7		10-Jan-19 A	06-Dec-20	30-Nov-20	06-Dec-20	12-Apr-21	18-Apr-21	133													
<b>EP_SP_66_12-WP5A-M35-4.05.01.03.6.3 Turbin Hall Building (2.3.05.03)</b>																											
05-5400	Fire Systems (2.3.05.03.01)	105	808	0%	5%	105		28-Dec-18 A	14-Mar-21	30-Nov-20	14-Mar-21	19-Jan-21	03-May-21	50													
05-5410 (M22)	Fire engineering	30	30	0%	0%	30		02-Feb-21	03-Mar-21	02-Feb-21	03-Mar-21	04-Apr-21	03-May-21	61													
05-5420 (M22)	FS schematics (2.3.05.03.03)	105	808	0%	5%	105		28-Dec-18 A	14-Mar-21	30-Nov-20	14-Mar-21	04-Jan-21	18-Apr-21	35													
<b>EP_SP_66_12-WP5A-M35-4.05.01.03.6.5 Elevated Drive Way and Associated Structures (2.3.05.04)</b>																											
05-5445 (M22)	Fire Systems	180	455	41.67%	5%	105		16-Dec-19 A	14-Mar-21	30-Nov-20	14-Mar-21	19-Jan-21	03-May-21	50													
05-5450 (M22)	FS schematics	180	499	17.22%	5%	149		16-Dec-19 A	27-Apr-21	30-Nov-20	27-Apr-21	21-Nov-20	18-Apr-21	-9													
<b>EP_SP_66_12-WP5A-M35-4.05.01.03.6.6 Reception Pavilion (2.3.05.06)</b>																											
05-5460 (M22)	Fire Systems (2.3.05.06.01)	270	528	61.11%	5%	105		04-Oct-19 A	14-Mar-21	30-Nov-20	14-Mar-21	19-Jan-21	03-May-21	50													
05-5470 (M22)	FS schematics (2.3.05.06.03)	270	601	34.07%	5%	178		04-Oct-19 A	26-May-21	30-Nov-20	26-May-21	23-Oct-20	18-Apr-21	-38													
<b>EP_SP_66_12-WP5A-M35-4.05.01.03.6.7 Compressor &amp; Closed Circuit (2.3.05.07)</b>																											
05-5480 (M22)	Fire Systems (2.3.05.07.01)	140	477	77.86%	65%	31		11-Sep-19 A	30-Dec-20	30-Nov-20	30-Dec-20	03-Apr-21	03-May-21	124													
05-5490 (M22)	FS schematics (2.3.05.07.03)	140	477	77.86%	65%	31		11-Sep-19 A	30-Dec-20	30-Nov-20	30-Dec-20	19-Mar-21	18-Apr-21	109													
<b>EP_SP_66_12-WP5A-M35-4.05.01.03.7 Building services design (excluding fire services instal</b>																											
05-1550	Electrical Services and Lighting	150	707	88.67%	5%	17	Start On or After	10-Jan-19 A	16-Dec-20	30-Nov-20	16-Dec-20	14-Nov-20	30-Nov-20	-16													
05-1560	MVAC (6 Packages)	105	779	15%	15%	89	Start On or After	10-Jan-19 A	27-Feb-21	30-Nov-20	27-Feb-21	06-Jan-21	05-Apr-21	38													
05-1570	Odour Control	135	943	48.15%	5%	70	Start On or After	11-Jul-18 A	07-Feb-21	30-Nov-20	07-Feb-21	26-Jan-21	05-Apr-21	57													
05-1580	Plumbing (7 Packages)	210	817	37%	37%	132	Start On or After	15-Jan-19 A	11-Apr-21	30-Nov-20	11-Apr-21	29-Nov-20	10-Apr-21	0													
05-1590	Drainage (7 Packages)	210	644	100%	100%	0	Start On or After	15-Jan-19 A	20-Oct-20 A																		
05-1600	ELV (7 Packages)	135	766	44%	44%	76	Start On or After	10-Jan-19 A	13-Feb-21	30-Nov-20	13-Feb-21	30-Nov-20	13-Feb-21	0													
05-1610	Lifts and Escalators (2 Packages)	135	426	33.33%	5%	90	Start On or After	30-Dec-19 A	27-Feb-21	30-Nov-20	27-Feb-21	27-Jan-21	26-Apr-21	58													
05-1630	Building Management System (BMS) (7 Packages)	135	100	54.07%	5%	62	Start On or After	23-Oct-20 A	30-Jan-21	30-Nov-20	30-Jan-21	28-Apr-21	28-Jun-21	149													
05-1770	Vehicle & Container Wash System	135	135	0%	0%	135	Start On or After	30-Nov-20*	13-Apr-21	30-Nov-20	13-Apr-21	12-Dec-20	25-Apr-21	12													
05-1770-1(M20)	Water Cannon System	135	673	0%	5%	135	Start On or After	11-Jun-19 A	13-Apr-21	30-Nov-20	13-Apr-21	25-Feb-21	09-Jul-21	87													
05-1770-2 (5a)	Process CCTV System	135	135	0%	0%	135		30-Nov-20	13-Apr-21	30-Nov-20	13-Apr-21	25-Feb-21	09-Jul-21	87													
<b>EP_SP_66_12-WP5A-M35-4.05.01.04 AIP Mechanical Treatment Plant Building (2.4)</b>																											
05-1640	Architectural Design (2.4.00)	105	875	42.86%	65%	60		07-Sep-18 A	28-Jan-21	30-Nov-20	28-Jan-21	05-Nov-20	03-Jan-21	-25													
05-1650	Foundation design (2.4.01)	105	289	100%	100%	0	Start On or After	07-Jul-19 A	21-Apr-20 A																		
05-1660	Structural design (2.4.02)	457	206	100%	100%	0	Start On or After	21-May-19 A	13-Dec-19 A																		
05-1670	Electrical and instrumentation works design (2.4.03)	100	100	0%	0%	100		30-Nov-20	09-Mar-21	30-Nov-20	09-Mar-21	19-Oct-20	26-Jan-21	-42													
05-1680	Mechanical works design (2.4.04)	105	105	0%	0%	105		30-Nov-20	14-Mar-21	30-Nov-20	14-Mar-21	30-Nov-20	14-Mar-21	0													
05-1690	Fire services installation design (2.4.05) (3 Packages)	105	716	9.5%	0%	95	Start On or After	20-Mar-19 A	05-Mar-21	30-Nov-20	05-Mar-21	13-Jan-21	18-Apr-21	45													
<b>EP_SP_66_12-WP5A-M35-4.05.01.04.7 Building services design (excluding fire services instal</b>																											
05-1700	LV and Emergency Power Distribution Design	17	638	0%	5%	17	Start On or After	20-Mar-19 A	16-Dec-20	30-Nov-20	16-Dec-20	14-Nov-20	30-Nov-20	-16													
05-1710	MVAC	135	721	22.22%	5%	105	Start On or After	25-Mar-19 A	14-Mar-21	30-Nov-20	14-Mar-21	22-Dec-20	05-Apr-21	22													
05-1720	Odour Control	105	105	0%	0%	105	Start On or After	30-Nov-20*	14-Mar-21	30-Nov-20	14-Mar-21	22-Dec-20	05-Apr-21	22													
05-1730	Plumbing	135	756	0%	5%	135	Start On or After	20-Mar-19 A	13-Apr-21	30-Nov-20	13-Apr-21	27-Nov-20	10-Apr-21	-3													
05-1740	Drainage	135	709	35%	5%	88	Start On or After	20-Mar-19 A	25-Feb-21	30-Nov-20	25-Feb-21	21-Jan-21	18-Apr-21	52													
05-1750	ELV	135	756	0%	0%	135	Start On or After	20-Mar-19 A	13-Apr-21	30-Nov-20	13-Apr-21	02-Oct-20	13-Feb-21	-59													
05-1760	Lifts	135	471	0%	0%	135	Start On or After	30-Dec-19 A	13-Apr-21	30-Nov-20	13-Apr-21	09-Jan-21	23-May-21	40													
05-1760-1(M20)	Building Management System (BMS)	135	135	0%	0%	135		30-Nov-20	13-Apr-21	30-Nov-20	13-Apr-21	01-Dec-20	14-Apr-21	1													
<b>EP_SP_66_12-WP5A-M35-4.05.01.05 AIP Wastewater Treatment Plant (2.5)</b>																											
05-1770	Architectural Design (2.5.00)	863	909	86.1%		120		03-Oct-18 A	29-Mar-21	30-Nov-20	29-Mar-21	17-Oct-20	26-May-21	58													

### 3-Month Rolling Programme (November 2020)



Activity ID	Activity Name	Original Duration	At Completion Duration	Duration % Complete	Activity % Complete	Remaining Duration	Primary Constraint	Start	Finish	Current Start	Current Finish	Late Start	Late Finish	Total Float	M36 Remarks	2020				2021				
																Nov 36	Dec 37	Jan 38	Feb 39	Nov 36	Dec 37	Jan 38	Feb 39	
05-1780	Architectural Design (2.5.00)	135	849	55.56%	65%	60	Start On or After	03-Oct-18 A	28-Jan-21	30-Nov-20	28-Jan-21	28-Mar-21	26-May-21	118										
05-1790	Foundation design (2.5.01)	105	466	100%	100%	0	Start On or After	11-Mar-19 A	19-Jun-20 A															
05-1800	Structural design (2.5.02)	190	466	100%	100%	0	Start On or After	11-Mar-19 A	19-Jun-20 A															
05-1810	Electrical and instrumentation works design (2.5.03)	105	289	100%	100%	0	Start On or After	24-Oct-18 A	09-Aug-19 A															
05-1820	Mechanical works design (2.5.04)	105	282	100%	100%	0	Start On or After	03-Oct-18 A	12-Jul-19 A															
05-2790	Fire services installation design (2.5.05)	105	774	14.29%	5%	90		16-Jan-19 A	27-Feb-21	30-Nov-20	27-Feb-21	19-Jan-21	18-Apr-21	50										
<b>EP_SP_66_12-WP5A-M35-4.05.01.05.7 Building services design (excluding fire services instal</b>																								
05-1830	LV and Emergency Power Distribution Design (2.5.06.01)	135	714	77.78%	25%	30	Start On or After	16-Jan-19 A	29-Dec-20	30-Nov-20	29-Dec-20	01-Nov-20	30-Nov-20	-29										28-Jan-21, Architectural D
05-1840	MVAC (2.5.06.02)	135	804	11.11%	25%	120	Start On or After	16-Jan-19 A	29-Mar-21	30-Nov-20	29-Mar-21	22-Dec-20	20-Apr-21	22										
05-1850	Odour Control (2.5.06.03)	105	105	0%	0%	105	Start On or After	30-Nov-20*	14-Mar-21	30-Nov-20	14-Mar-21	22-Dec-20	05-Apr-21	22										30-Nov-20*
05-1860	Plumbing (2.5.06.04)	135	804	11.11%	25%	120	Start On or After	16-Jan-19 A	29-Mar-21	30-Nov-20	29-Mar-21	12-Dec-20	10-Apr-21	12										28-Jan-21, Drainage (2.5.
05-1870	Drainage (2.5.06.05)	135	744	55.56%	25%	60	Start On or After	16-Jan-19 A	28-Jan-21	30-Nov-20	28-Jan-21	05-Dec-20	02-Feb-21	5										28-Jan-21, Drainage (2.5.
05-1880	ELV (2.5.06.06)	135	804	11.11%	25%	120	Start On or After	16-Jan-19 A	29-Mar-21	30-Nov-20	29-Mar-21	17-Oct-20	13-Feb-21	-44										
<b>EP_SP_66_12-WP5A-M35-4.05.01.06 AIP Water Treatment Plant Building (2.6)</b>																								
05-1900	Architectural Design (2.6.00)	105	875	42.86%	65%	60	Start On or After	07-Sep-18 A	28-Jan-21	30-Nov-20	28-Jan-21	05-Nov-20	03-Jan-21	-25										Architectural Design (2.6.
05-1910	Foundation design (2.6.01)	120	227	100%	100%	0	Start On or After	07-Sep-19 A	21-Apr-20 A															
05-1920	Structural design (2.6.02)	200	206	100%	100%	0	Start On or After	21-May-19 A	13-Dec-19 A															
05-1930	Electrical and instrumentation works design (2.6.03)	105	289	100%	100%	0	Start On or After	24-Oct-18 A	09-Aug-19 A															
05-1940	Mechanical works design (2.6.04)	105	195	100%	100%	0	Start On or After	30-Nov-18 A	13-Jun-19 A															
05-1950	Fire services installation design (2.6.05) (3 Packages)	105	706	19%	19%	85		20-Mar-19 A	23-Feb-21	30-Nov-20	23-Feb-21	23-Jan-21	18-Apr-21	55										23
<b>EP_SP_66_12-WP5A-M35-4.05.01.06.7 Building services design (excluding fire services instal</b>																								
05-1960	Electrical Services and Lighting (2.6.06.01)	135	756	0%	5%	135	Start On or After	20-Mar-19 A	13-Apr-21	30-Nov-20	13-Apr-21	02-Oct-20	13-Feb-21	-59										
05-1970	MVAC	135	721	22.22%	5%	105	Start On or After	25-Mar-19 A	14-Mar-21	30-Nov-20	14-Mar-21	22-Dec-20	05-Apr-21	22										
05-1990	Plumbing	135	756	0%	5%	135	Start On or After	20-Mar-19 A	13-Apr-21	30-Nov-20	13-Apr-21	27-Nov-20	10-Apr-21	-3										
05-2000	Drainage	135	709	35%	5%	88	Start On or After	20-Mar-19 A	25-Feb-21	30-Nov-20	25-Feb-21	21-Jan-21	18-Apr-21	52										
05-2010	ELV	135	756	0%	5%	135	Start On or After	20-Mar-19 A	13-Apr-21	30-Nov-20	13-Apr-21	02-Oct-20	13-Feb-21	-59										
<b>EP_SP_66_12-WP5A-M35-4.05.01.07 AIP Administration Building (2.7)</b>																								
05-2020	Architectural Design (2.7.00)	135	910	55.56%	65%	60	Start On or After	03-Aug-18 A	28-Jan-21	30-Nov-20	28-Jan-21	19-Jan-21	19-Mar-21	50										28-Jan-21, Architectural D
05-2030	Foundation design (2.7.01)	200	142	100%	100%	0	Start On or After	30-Sep-19 A	19-Feb-20 A															
05-2040	Structural design (2.7.02)	200	690	0%	65%	200	Start On or After	29-Jul-19 A	17-Jun-21	30-Nov-20	17-Jun-21	12-Dec-21	29-Jun-22	377										
05-2050	Electrical and instrumentation works design (2.7.03)	135	135	0%	0%	135	Start On or After	30-Nov-20*	13-Apr-21	30-Nov-20	13-Apr-21	15-Dec-20	28-Apr-21	15										30-Nov-20*
05-2060	Fire services installation design (3 Packages) (2.7.04)	135	576	9.5%	9.5%	122	Start On or After	03-Sep-19 A	01-Apr-21	30-Nov-20	01-Apr-21	17-Nov-20	19-Mar-21	-12										
<b>EP_SP_66_12-WP5A-M35-4.05.01.07.6 Building services design (excluding fire services instal</b>																								
05-2070	Electrical Services and Lighting (2.7.05.01)	135	589	0%	5%	135	Start On or After	03-Sep-19 A	13-Apr-21	30-Nov-20	13-Apr-21	02-Oct-20	13-Feb-21	-59										
05-2080	MVAC	135	559	22.22%	5%	105	Start On or After	03-Sep-19 A	14-Mar-21	30-Nov-20	14-Mar-21	22-Dec-20	05-Apr-21	22										
05-2100	Plumbing	135	589	0%	5%	135	Start On or After	03-Sep-19 A	13-Apr-21	30-Nov-20	13-Apr-21	27-Nov-20	10-Apr-21	-3										
05-2110	Drainage	135	542	35%	5%	88	Start On or After	03-Sep-19 A	25-Feb-21	30-Nov-20	25-Feb-21	21-Jan-21	18-Apr-21	52										
05-2120	ELV	135	589	0%	5%	135	Start On or After	03-Sep-19 A	13-Apr-21	30-Nov-20	13-Apr-21	02-Oct-20	13-Feb-21	-59										
05-2130	Lifts and Escalators	135	471	0%	5%	135	Start On or After	30-Dec-19 A	13-Apr-21	30-Nov-20	13-Apr-21	13-Dec-20	26-Apr-21	13										
05-2130-1(M20)	Building Management System (BMS)	135	135	0%	0%	135	Start On or After	01-Feb-21*	15-Jun-21	01-Feb-21	15-Jun-21	14-Feb-21	28-Jun-21	13										01-Feb-21*
<b>EP_SP_66_12-WP5A-M35-4.05.01.08 AIP IWMF Substation (2.8)</b>																								
05-2140	Architectural Design (2.8.00)	135	437	100%	100%	0	Start On or After	03-Aug-18 A	14-Oct-19 A															

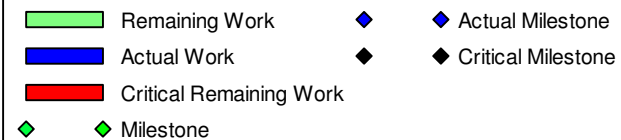
3-Month Rolling Programme (November 2020)

Page 6 of 21

- Remaining Work
- Actual Work
- Critical Remaining Work
- Milestone
- Actual Milestone
- Critical Milestone

Activity ID	Activity Name	Original Duration	At Completion Duration	Duration % Complete	Activity % Complete	Remaining Duration	Primary Constraint	Start	Finish	Current Start	Current Finish	Late Start	Late Finish	Total Float	M36 Remarks	2020				2021	
																Nov	Dec	Jan	Feb	Jan	Feb
05-2150	Foundation design (2.8.01)	150	124	100%	100%	0		17-May-19 A	18-Sep-19 A												
05-2160	Structural design (2.8.02)	200	168	100%	100%	0		31-Oct-18 A	17-Apr-19 A												
05-2170	Electrical and instrumentation works design (2.8.03) (14 Packages)	180	489	51.67%	5%	87	Start On or After	25-Oct-19 A	24-Feb-21	30-Nov-20	24-Feb-21	29-Nov-20	23-Feb-21	-1							
05-2190	Fire services installation design (2.8.05) (2 Packages)	170	843	36%	36%	109	Start On or After	27-Nov-18 A	18-Mar-21	30-Nov-20	18-Mar-21	01-Dec-20	19-Mar-21	1							
<b>EP_SP_66_12-WP5A-M35-4.05.01.08.7 Building services design (excluding fire services instal</b>		<b>712</b>	<b>654</b>	<b>100%</b>	<b>100%</b>	<b>0</b>		<b>27-Nov-18 A</b>	<b>11-Sep-20 A</b>												
05-2200	Electrical Services and Lighting (2.8.06.01)	135	571	100%	100%	0	Start On or After	27-Nov-18 A	20-Jun-20 A												
05-2210	MVAC	135	577	100%	100%	0	Start On or After	27-Nov-18 A	26-Jun-20 A												
05-2220	Plumbing	135	484	100%	100%	0	Start On or After	27-Nov-18 A	25-Mar-20 A												
05-2230	Drainage	135	387	100%	100%	0	Start On or After	27-Nov-18 A	19-Dec-19 A												
05-2240	ELV	135	654	100%	100%	0	Start On or After	27-Nov-18 A	11-Sep-20 A												
05-2240-1(M20)	Building Management System (BMS)	135	178	100%	100%	0	Start On or After	24-Dec-19 A	19-Jun-20 A												
<b>EP_SP_66_12-WP5A-M35-4.05.01.1 AIP Chimney</b>		<b>196</b>	<b>477</b>	<b>31.12%</b>		<b>135</b>		<b>24-Dec-19 A</b>	<b>13-Apr-21</b>	<b>30-Nov-20</b>	<b>13-Apr-21</b>	<b>08-Apr-21</b>	<b>20-Aug-21</b>	<b>129</b>							
<b>EP_SP_66_12-WP5A-M35-4.05.01.1.1 Building services design (excluding fire services install.</b>		<b>196</b>	<b>477</b>	<b>31.12%</b>		<b>135</b>		<b>24-Dec-19 A</b>	<b>13-Apr-21</b>	<b>30-Nov-20</b>	<b>13-Apr-21</b>	<b>08-Apr-21</b>	<b>20-Aug-21</b>	<b>129</b>							
05-5430(5a)	Electrical Services and Lighting	135	135	0%	0%	135		30-Nov-20	13-Apr-21	30-Nov-20	13-Apr-21	08-Apr-21	20-Aug-21	129			30-Nov-20				
05-5440(5a)	MVAC	135	135	0%	0%	135		30-Nov-20	13-Apr-21	30-Nov-20	13-Apr-21	08-Apr-21	20-Aug-21	129			30-Nov-20				
05-5450(5a)	Plumbing	135	135	0%	0%	135		30-Nov-20	13-Apr-21	30-Nov-20	13-Apr-21	08-Apr-21	20-Aug-21	129			30-Nov-20				
05-5460(5a)	Drainage	135	135	0%	0%	135		30-Nov-20	13-Apr-21	30-Nov-20	13-Apr-21	08-Apr-21	20-Aug-21	129			30-Nov-20				
05-5470(5a)	ELV	135	135	0%	0%	135		30-Nov-20	13-Apr-21	30-Nov-20	13-Apr-21	08-Apr-21	20-Aug-21	129			30-Nov-20				
05-5480(5a)	Lift	135	135	0%	0%	135		30-Nov-20	13-Apr-21	30-Nov-20	13-Apr-21	08-Apr-21	20-Aug-21	129			30-Nov-20				
05-5490(5a)	Building Management System (BMS)	135	431	34.07%	25%	89		24-Dec-19 A	26-Feb-21	30-Nov-20	26-Feb-21	24-May-21	20-Aug-21	175							
<b>EP_SP_66_12-WP5A-M35-4.05.01.2 AIP Weighbridge</b>		<b>135</b>	<b>135</b>	<b>0%</b>		<b>135</b>		<b>30-Nov-20</b>	<b>13-Apr-21</b>	<b>30-Nov-20</b>	<b>13-Apr-21</b>	<b>14-Nov-20</b>	<b>28-Mar-21</b>	<b>-16</b>							
<b>EP_SP_66_12-WP5A-M35-4.05.01.2.1 Building services design (excluding fire services install.</b>		<b>135</b>	<b>135</b>	<b>0%</b>		<b>135</b>		<b>30-Nov-20</b>	<b>13-Apr-21</b>	<b>30-Nov-20</b>	<b>13-Apr-21</b>	<b>14-Nov-20</b>	<b>28-Mar-21</b>	<b>-16</b>							
05-5500(5a)	Electrical Services and Lighting	135	135	0%	0%	135		30-Nov-20	13-Apr-21	30-Nov-20	13-Apr-21	14-Nov-20	28-Mar-21	-16			30-Nov-20				
05-5510(5a)	MVAC	135	135	0%	0%	135		30-Nov-20	13-Apr-21	30-Nov-20	13-Apr-21	14-Nov-20	28-Mar-21	-16			30-Nov-20				
05-5520(5a)	Plumbing	135	135	0%	0%	135		30-Nov-20	13-Apr-21	30-Nov-20	13-Apr-21	14-Nov-20	28-Mar-21	-16			30-Nov-20				
05-5530(5a)	Drainage	135	135	0%	0%	135		30-Nov-20	13-Apr-21	30-Nov-20	13-Apr-21	14-Nov-20	28-Mar-21	-16			30-Nov-20				
05-5540(5a)	ELV	135	135	0%	0%	135		30-Nov-20	13-Apr-21	30-Nov-20	13-Apr-21	14-Nov-20	28-Mar-21	-16			30-Nov-20				
05-5550(5a)	Lift	135	135	0%	0%	135		30-Nov-20	13-Apr-21	30-Nov-20	13-Apr-21	14-Nov-20	28-Mar-21	-16			30-Nov-20				
05-5560(5a)	Building Management System (BMS)	135	135	0%	0%	135		30-Nov-20	13-Apr-21	30-Nov-20	13-Apr-21	14-Nov-20	28-Mar-21	-16			30-Nov-20				
<b>EP_SP_66_12-WP5A-M35-4.05.01.09 AIP Air Quality Monitoring Stations (2.9)</b>		<b>120</b>	<b>134</b>	<b>38.33%</b>		<b>74</b>		<b>01-Oct-20 A</b>	<b>11-Feb-21</b>	<b>30-Nov-20</b>	<b>11-Feb-21</b>	<b>01-Nov-20</b>	<b>13-Jan-21</b>	<b>-29</b>							
05-2250	Design of the Air Quality Monitoring Stations (2.9.01)	120	134	38.33%	5%	74	Start On or After	01-Oct-20 A	11-Feb-21	30-Nov-20	11-Feb-21	01-Nov-20	13-Jan-21	-29							Design of the
<b>EP_SP_66_12-WP5A-M35-4.05.01.10 AIP Roads and Utilities (2.10)</b>		<b>673</b>	<b>869</b>	<b>79.94%</b>		<b>135</b>		<b>27-Nov-18 A</b>	<b>13-Apr-21</b>	<b>30-Nov-20</b>	<b>13-Apr-21</b>	<b>02-Oct-20</b>	<b>06-Jan-23</b>	<b>633</b>							
<b>EP_SP_66_12-WP5A-M35-4.05.01.10.1 Permanent road works layout on the Artificial Island (2.</b>		<b>135</b>	<b>174</b>	<b>100%</b>		<b>0</b>		<b>26-Feb-20 A</b>	<b>18-Aug-20 A</b>												
05-2260	Roads and hardstandings layout	135	174	100%	100%	0	Start On or After	26-Feb-20 A	18-Aug-20 A												
05-2270	Road signage and markings	135	174	100%	100%	0		26-Feb-20 A	18-Aug-20 A												
<b>EP_SP_66_12-WP5A-M35-4.05.01.10.2 Sewerage design on the Artificial Island (2.10.02)</b>		<b>197</b>	<b>574</b>	<b>31.47%</b>		<b>135</b>		<b>18-Sep-19 A</b>	<b>13-Apr-21</b>	<b>30-Nov-20</b>	<b>13-Apr-21</b>	<b>25-Oct-21</b>	<b>08-Mar-22</b>	<b>329</b>							
05-2280	Foul Sewerage concept sizing	135	163	100%	100%	0	Start On or After	18-Sep-19 A	28-Feb-20 A												
05-2290	Contaminated Sewerage concept / sizing	135	574	0%	5%	135	Start On or After	18-Sep-19 A	13-Apr-21	30-Nov-20	13-Apr-21	25-Oct-21	08-Mar-22	329							
<b>EP_SP_66_12-WP5A-M35-4.05.01.10.3 Drainage system design on the Artificial Island (2.10.03)</b>		<b>135</b>	<b>693</b>	<b>0%</b>		<b>135</b>		<b>22-May-19 A</b>	<b>13-Apr-21</b>	<b>30-Nov-20</b>	<b>13-Apr-21</b>	<b>29-Dec-20</b>	<b>12-May-21</b>	<b>29</b>							
05-2300	Surface water Drainage System concept / sizing	135	282	100%	100%	0	Start On or After	22-May-19 A	28-Feb-20 A												
05-2310	First Flush Drainage System concept / sizing	135	693	0%	5%	135	Start On or After	22-May-19 A	13-Apr-21	30-Nov-20	13-Apr-21	29-Dec-20	12-May-21	29							
<b>EP_SP_66_12-WP5A-M35-4.05.01.10.4 Water supply system design on the Artificial Island (2.1</b>		<b>501</b>	<b>593</b>	<b>73.05%</b>		<b>135</b>		<b>30-Aug-19 A</b>	<b>13-Apr-21</b>	<b>30-Nov-20</b>	<b>13-Apr-21</b>	<b>22-Nov-20</b>	<b>07-Apr-22</b>	<b>359</b>							
05-2320	Potable Water Distribution System (2.10.04.01)	135	517	0%	5%	135	Start On or After	14-Nov-19 A	13-Apr-21	30-Nov-20	13-Apr-21	05-Oct-21	16-Feb-22	309							
05-2330	Reuse Water Distribution System (2.10.04.02)	135	362	100%	100%	0	Start On or After	15-Nov-19 A	11-Nov-20 A												Reuse Water Distribution System (2.10.04.02), 11-Nov-20 A

3-Month Rolling Programme (November 2020)





Activity ID	Activity Name	Original Duration	At Completion Duration	Duration % Complete	Activity % Complete	Remaining Duration	Primary Constraint	Start	Finish	Current Start	Current Finish	Late Start	Late Finish	Total Float	M36 Remarks	2020		2021	
																Nov 36	Dec 37	Jan 38	Feb 39
05-2340	Reuse Water Distribution System - (Irrigation System) (2.10.04.03)	135	362	100%	100%	0	Start On or After	15-Nov-19 A	11-Nov-20 A										
05-2350	Rainwater harvesting System (2.10.04.04)	135	135	0%	0%	135	Start On or After	30-Nov-20*	13-Apr-21	30-Nov-20	13-Apr-21	27-Dec-20	10-May-21	27		30-Nov-20*			
05-2360	Water Tanks (2.10.04.05)	135	135	0%	0%	135	Start On or After	30-Nov-20*	13-Apr-21	30-Nov-20	13-Apr-21	24-Nov-21	07-Apr-22	359		30-Nov-20*			
05-2370	External FS Systems (2.10.04.06)	135	527	0%	65%	135		04-Nov-19 A	13-Apr-21	30-Nov-20	13-Apr-21	24-Nov-21	07-Apr-22	359					
05-2370-1(M24)	E&M system for seawater intake and brine discharge (2.10.04.07)	90	548	0%	5%	90		30-Aug-19 A	27-Feb-21	30-Nov-20	27-Feb-21	28-Jul-21	25-Oct-21	240					
05-2370-2(M24)	Building Services system for seawater intake and brine discharge (2.10.04.09)	90	354	0%	5%	90		11-Mar-20 A	27-Feb-21	30-Nov-20	27-Feb-21	11-May-21	08-Aug-21	162					
05-2370-3(5a)	Chemical scrubber system for odour control (2.10.04.10)	135	135	0%	0%	135	Start On or After	30-Nov-20*	13-Apr-21	30-Nov-20	13-Apr-21	22-Nov-20	05-Apr-21	-8		30-Nov-20*			
<b>EP_SP_66_12-WP5A-M35-4.05.01.10.6</b>	<b>Design of telecommunication and other utilities (2.10.0</b>	<b>656</b>	<b>869</b>	<b>79.42%</b>		<b>135</b>		<b>27-Nov-18 A</b>	<b>13-Apr-21</b>	<b>30-Nov-20</b>	<b>13-Apr-21</b>	<b>02-Oct-20</b>	<b>06-Jan-23</b>	<b>633</b>					
05-2380	Power Distribution System concept / schematics (2.10.06.01)	135	135	0%	0%	135	Start On or After	30-Nov-20*	13-Apr-21	30-Nov-20	13-Apr-21	09-Jan-21	23-May-21	40		30-Nov-20*			
05-2390	Site Lighting Concept / Schematics (2.10.06.02)	135	306	100%	100%	0	Start On or After	18-Dec-19 A	19-Oct-20 A										
05-2400	Lightning Protection System concept / schematics (2.10.06.03)	135	307	100%	100%	0	Start On or After	27-Dec-19 A	29-Oct-20 A										
05-2410	Site ELV Network System - Communications System concept / schematics (2.10.06.04)	135	401	0%	5%	135	Start On or After	09-Mar-20 A	13-Apr-21	30-Nov-20	13-Apr-21	09-Jan-21	23-May-21	40					
05-2420	Site ELV Network System - Security Systems concept / schematics (2.10.06.05)	135	401	0%	5%	135	Start On or After	09-Mar-20 A	13-Apr-21	30-Nov-20	13-Apr-21	09-Jan-21	23-May-21	40					
05-2430	Site ELV Network System - Navigation aids concept / schematics (2.10.06.06)	135	135	0%	0%	135	Start On or After	30-Nov-20*	13-Apr-21	30-Nov-20	13-Apr-21	09-Jan-21	23-May-21	40		30-Nov-20*			
05-2440	Microwave transmission of FS direct link (2.10.06.07)	135	824	33.33%	33.33%	90		27-Nov-18 A	27-Feb-21	30-Nov-20	27-Feb-21	23-Feb-21	23-May-21	85					
05-2450	Fuel Handling System concept / schematics (2.10.06.08)	135	446	0%	5%	135	Start On or After	24-Jan-20 A	13-Apr-21	30-Nov-20	13-Apr-21	25-Aug-22	06-Jan-23	633					
05-3190	Computerised Maintenance Management System (CMMS)	105	644	0%	5%	105	Start On or After	10-Jun-19 A	14-Mar-21	30-Nov-20	14-Mar-21	02-Oct-20	14-Jan-21	-59					
05-3200	Information and Document Management System (IDMS)	105	609	0%	5%	105	Start On or After	15-Jul-19 A	14-Mar-21	30-Nov-20	14-Mar-21	02-Oct-20	14-Jan-21	-59					
05-3200-1(M34)	Design of Pipe / Utilities Trenches concept (2.10.06.09.01)	105	105	0%	0%	105	Start On or After	30-Nov-20*	14-Mar-21	30-Nov-20	14-Mar-21	30-May-21	11-Sep-21	181		30-Nov-20*			
05-3200-2(M34)	Sitewide Utilities Trenches Design (2.10.06.09.02)	105	144	0%	5%	105	Start On or After	22-Oct-20 A	14-Mar-21	30-Nov-20	14-Mar-21	30-May-21	11-Sep-21	181					
05-3840 (M22)	Automatic Traffic Control System (ATCS) (2.10.06.12)	90	90	0%	0%	90		30-Nov-20	27-Feb-21	30-Nov-20	27-Feb-21	05-Jan-21	04-Apr-21	36		30-Nov-20			
<b>EP_SP_66_12-WP5A-M35-4.05.01.10.7</b>	<b>Utility ducts/Pipebridges design (2.10.25)</b>	<b>181</b>	<b>249</b>	<b>50.28%</b>		<b>90</b>		<b>24-Jun-20 A</b>	<b>27-Feb-21</b>	<b>30-Nov-20</b>	<b>27-Feb-21</b>	<b>04-Dec-20</b>	<b>31-Jul-21</b>	<b>154</b>					
05-2460	Design of Pipe / Utilities Trenches concept	90	90	0%	0%	90		30-Nov-20	27-Feb-21	30-Nov-20	27-Feb-21	03-May-21	31-Jul-21	154		30-Nov-20			
05-2470	Utility ducts network	90	90	0%	0%	90		30-Nov-20	27-Feb-21	30-Nov-20	27-Feb-21	19-Apr-21	17-Jul-21	140		30-Nov-20			
05-2480	Pipebridge network - Layout	90	90	0%	0%	90		30-Nov-20	27-Feb-21	30-Nov-20	27-Feb-21	03-May-21	31-Jul-21	154		30-Nov-20			
05-2490	Pipebridge network - Foundation Plan	135	219	55.56%	5%	60		24-Jun-20 A	28-Jan-21	30-Nov-20	28-Jan-21	04-Dec-20	01-Feb-21	4					
05-2500	Pipebridge network - Structure Plan	135	219	55.56%	5%	60		24-Jun-20 A	28-Jan-21	30-Nov-20	28-Jan-21	02-Jun-21	31-Jul-21	184					
<b>EP_SP_66_12-WP5A-M35-4.05.01.11</b>	<b>AIP Architectural, Finishes and Landscaping Works (2.11)</b>	<b>241</b>	<b>425</b>	<b>25.31%</b>		<b>180</b>		<b>30-Mar-20 A</b>	<b>28-May-21</b>	<b>30-Nov-20</b>	<b>28-May-21</b>	<b>05-Oct-20</b>	<b>08-Feb-23</b>	<b>621</b>					
<b>EP_SP_66_12-WP5A-M35-4.05.01.11.1</b>	<b>External and internal finishes design for Incineration P</b>	<b>167</b>	<b>382</b>	<b>17.96%</b>		<b>137</b>		<b>30-Mar-20 A</b>	<b>15-Apr-21</b>	<b>30-Nov-20</b>	<b>15-Apr-21</b>	<b>23-Jun-21</b>	<b>06-Apr-22</b>	<b>356</b>					
05-2510	External and internal finishes design for Incineration Plant Building (6 Packages)	137	347	0%	5%	137	Start On or After	04-May-20 A	15-Apr-21	30-Nov-20	15-Apr-21	23-Aug-21	06-Jan-22	266					
05-2520	External and internal finishes design for ACC Equipment Structure	137	137	0%	0%	137	Start On or After	30-Nov-20*	15-Apr-21	30-Nov-20	15-Apr-21	23-Aug-21	06-Jan-22	266		30-Nov-20*			
05-2530	External and internal finishes design for Turbine Hall Building (3 Packages)	137	347	0%	5%	137	Start On or After	04-May-20 A	15-Apr-21	30-Nov-20	15-Apr-21	21-Nov-21	06-Apr-22	356					
05-2540	External and internal finishes design for Air Compressor Building (3 Packages)	137	347	0%	5%	137	Start On or After	04-May-20 A	15-Apr-21	30-Nov-20	15-Apr-21	23-Jun-21	06-Nov-21	205					
05-2550	External and internal finishes design for Chimney (6 Packages)	137	137	0%	0%	137	Start On or After	30-Nov-20*	15-Apr-21	30-Nov-20	15-Apr-21	22-Oct-21	07-Mar-22	326		30-Nov-20*			
05-2560	External and internal finishes design for Reception Pavilion (5 Packages)	137	382	0%	5%	137	Start On or After	30-Mar-20 A	15-Apr-21	30-Nov-20	15-Apr-21	22-Oct-21	07-Mar-22	326					
<b>EP_SP_66_12-WP5A-M35-4.05.01.11.2</b>	<b>External and internal finishes design for MT Plant Buil</b>	<b>136</b>	<b>353</b>	<b>0%</b>		<b>136</b>		<b>27-Apr-20 A</b>	<b>14-Apr-21</b>	<b>30-Nov-20</b>	<b>14-Apr-21</b>	<b>28-Sep-21</b>	<b>10-Feb-22</b>	<b>302</b>					
05-2570	External and internal finishes design for MT Plant Building (7 Packages)	136	353	0%	5%	136	Start On or After	27-Apr-20 A	14-Apr-21	30-Nov-20	14-Apr-21	28-Sep-21	10-Feb-22	302					
<b>EP_SP_66_12-WP5A-M35-4.05.01.11.3</b>	<b>External and internal finishes design for the Wastewater</b>	<b>135</b>	<b>135</b>	<b>0%</b>		<b>135</b>		<b>30-Nov-20</b>	<b>13-Apr-21</b>	<b>30-Nov-20</b>	<b>13-Apr-21</b>	<b>29-Sep-21</b>	<b>10-Feb-22</b>	<b>303</b>					
05-2580	External and internal finishes design for the Wastewater Treatment Plant (3 Packages)	135	135	0%	0%	135	Start On or After	30-Nov-20*	13-Apr-21	30-Nov-20	13-Apr-21	29-Sep-21	10-Feb-22	303		30-Nov-20*			
<b>EP_SP_66_12-WP5A-M35-4.05.01.11.4</b>	<b>External and internal finishes design for the Water Treat</b>	<b>135</b>	<b>135</b>	<b>0%</b>		<b>135</b>		<b>30-Nov-20</b>	<b>13-Apr-21</b>	<b>30-Nov-20</b>	<b>13-Apr-21</b>	<b>29-Sep-21</b>	<b>10-Feb-22</b>	<b>303</b>					
05-2590	External and internal finishes design for the Water Treatment Plant Building (3 Packages)	135	135	0%	0%	135	Start On or After	30-Nov-20*	13-Apr-21	30-Nov-20	13-Apr-21	29-Sep-21	10-Feb-22	303		30-Nov-20*			
<b>EP_SP_66_12-WP5A-M35-4.05.01.11.5</b>	<b>External and internal finishes design for the Administr</b>	<b>135</b>	<b>352</b>	<b>0%</b>		<b>135</b>		<b>27-Apr-20 A</b>	<b>13-Apr-21</b>	<b>30-Nov-20</b>	<b>13-Apr-21</b>	<b>30-Dec-21</b>	<b>13-May-22</b>	<b>395</b>					
05-2600	External and internal finishes design for the Administration Building (6 Packages)	135	352	0%	5%	135	Start On or After	27-Apr-20 A	13-Apr-21	30-Nov-20	13-Apr-21	30-Dec-21	13-May-22	395					

### 3-Month Rolling Programme (November 2020)

- Remaining Work
- Actual Work
- Critical Remaining Work
- Milestone
- Actual Milestone
- Critical Milestone

Activity ID	Activity Name	Original Duration	At Completion Duration	Duration % Complete	Activity % Complete	Remaining Duration	Primary Constraint	Start	Finish	Current Start	Current Finish	Late Start	Late Finish	Total Float	M36 Remarks	2020				2021			
																Nov	Dec	Jan	Feb	Nov	Dec	Jan	Feb
																36	37	38	39	36	37	38	39
EP_SP_66_12-WP5A-M35-4.05.01.11.6	External and internal finishes design for the IWMF Sub	135	380	0%	5%	135	Start On or After	30-Mar-20 A	13-Apr-21	30-Nov-20	13-Apr-21	05-Oct-20	16-Feb-21	-56									
05-2610	External and internal finishes design for the IWMF Substation (4 Packages)	135	380	0%	5%	135	Start On or After	30-Mar-20 A	13-Apr-21	30-Nov-20	13-Apr-21	05-Oct-20	16-Feb-21	-56									
EP_SP_66_12-WP5A-M35-4.05.01.11.7	Landscape masterplan (2.11.07)	241	386	25.31%		180		08-May-20 A	28-May-21	30-Nov-20	28-May-21	18-Nov-21	16-May-22	353									
05-2620	Water Feature (2.11.07.01)	105	344	0%	5%	105	Start On or After	19-Jun-20 A	28-May-21	13-Feb-21	28-May-21	18-Nov-21	02-Mar-22	278									
05-2630	Planting details	105	105	0%	0%	105	Start On or After	13-Feb-21*	28-May-21	13-Feb-21	28-May-21	18-Nov-21	02-Mar-22	278					13-Feb-21*				
05-2920_1(M34)	Turbine Hall Building (2.11.07.04)	105	386	0%	5%	105		08-May-20 A	28-May-21	13-Feb-21	28-May-21	01-Feb-22	16-May-22	353									
05-2920_2(M34)	Reception Pavilion (2.11.07.06)	105	311	0%	5%	105		08-May-20 A	14-Mar-21	30-Nov-20	14-Mar-21	01-Feb-22	16-May-22	428									
05-2920_3(M34)	MT Plant Building and Water Treatment Plant Building (2.11.07.07)	105	386	0%	5%	105		08-May-20 A	28-May-21	13-Feb-21	28-May-21	01-Feb-22	16-May-22	353									
05-2920_4(M34)	Administration Building (2.11.07.08)	105	386	0%	5%	105		08-May-20 A	28-May-21	13-Feb-21	28-May-21	01-Feb-22	16-May-22	353									
05-2920_5(M34)	IWMF Substation (2.11.07.09)	105	386	0%	5%	105		08-May-20 A	28-May-21	13-Feb-21	28-May-21	01-Feb-22	16-May-22	353									
05-2920_6(M34)	Process Building (2.11.07.10)	105	386	0%	5%	105		08-May-20 A	28-May-21	13-Feb-21	28-May-21	01-Feb-22	16-May-22	353									
EP_SP_66_12-WP5A-M35-4.05.01.11.8	Architectural Detailing - Site Wide (2.11.29)	137	137	0%	0%	137	Start On or After	30-Nov-20	15-Apr-21	30-Nov-20	15-Apr-21	02-Nov-20	18-Mar-21	-28									
05-2640	Architectural Detailing - Site Wide Concept	137	137	0%	0%	137	Start On or After	30-Nov-20*	15-Apr-21	30-Nov-20	15-Apr-21	02-Nov-20	18-Mar-21	-28		30-Nov-20*							
EP_SP_66_12-WP5A-M35-4.05.01.11.9	External and internal finishes design for Elavated Driv	137	137	0%	0%	137	Start On or After	30-Nov-20	15-Apr-21	30-Nov-20	15-Apr-21	25-Sep-22	08-Feb-23	664									
05-5410	External and internal finishes design for Elavated Driveway	137	137	0%	0%	137	Start On or After	30-Nov-20*	15-Apr-21	30-Nov-20	15-Apr-21	25-Sep-22	08-Feb-23	664		30-Nov-20*							
EP_SP_66_12-WP5A-M35-4.05.01.12	AIP Testing and Commissioning (2.12)	1795	1863	28.91%		1276		23-Apr-19 A	28-May-24	30-Nov-20	28-May-24	10-Dec-20	12-Mar-24	-77									
05-2650	Factory Acceptance Testing plan (2.12.01.01) (1 Packages)	60	36	100%	100%	0		23-Apr-19 A	29-May-19 A														
05-2650-1(5)	Factory Acceptance Testing plan (2.12.01.02-06) (7 Packages)	60	876	0%	0%	289		23-Apr-19 A	14-Sep-21	30-Nov-20	14-Sep-21	27-Jan-21	11-Nov-21	58									
05-2660	Site Acceptance Testing plan (2.12.02)	105	105	0%	0%	105	Start On or After	30-Nov-20*	14-Mar-21	30-Nov-20	14-Mar-21	24-Jan-21	08-May-21	55		30-Nov-20*							
05-2670	System commissioning plan (2.12.03)	105	105	0%	0%	105	Start On or After	07-Dec-20*	21-Mar-21	07-Dec-20	21-Mar-21	10-Dec-20	24-Mar-21	3		07-Dec-20*							
05-2680	Plant commissioning plan (2.12.04)	105	105	0%	0%	105	As Late As Possible	14-Feb-24	28-May-24	14-Feb-24	28-May-24	29-Nov-23	12-Mar-24	-77									
EP_SP_66_12-WP5A-M35-4.05.01.13	AIP Transportation Facilities for the Operation (2.13)	136	259	22.79%		105		29-Jun-20 A	14-Mar-21	30-Nov-20	14-Mar-21	10-Nov-20	25-Aug-21	164									
05-2690	Design of vehicles for MSW and Ash and Residues delivery (2.13.01)	105	259	0%	5%	105		29-Jun-20 A	14-Mar-21	30-Nov-20	14-Mar-21	10-Nov-20	22-Feb-21	-20									
05-2700	Design of marine vessels for the use of the Employer and visitors (2.13.02)	105	188	0%	5%	105		08-Sep-20 A	14-Mar-21	30-Nov-20	14-Mar-21	13-May-21	25-Aug-21	164									
EP_SP_66_12-WP5A-M35-4.05.01.14	AIP Miscellaneous Works (2.14)	258	375	11.63%		228		06-Jul-20 A	15-Jul-21	30-Nov-20	15-Jul-21	09-May-21	14-Jun-25	1430									
05-2710	Design of process related CCTV and existing onshore crane replacement works at Portion 2 (2.14.01)	105	105	0%	0%	105	Start On or After	02-Apr-21*	15-Jul-21	02-Apr-21	15-Jul-21	02-Mar-25	14-Jun-25	1430									
05-2720	Design of visitors and environmental education facilities (2.14.02)	105	252	0%	5%	105		06-Jul-20 A	14-Mar-21	30-Nov-20	14-Mar-21	09-May-21	21-Aug-21	160									
EP_SP_66_12-WP5A-M35-4.05.01.15	AIP Miscellaneous Detailing (2.15)	287	287	0%	0%	287		30-Nov-20	12-Sep-21	30-Nov-20	12-Sep-21	14-Nov-20	30-Aug-22	352									
05-2730	Covered walkway at passenger berth (2.15.02)	105	105	0%	0%	105	Start On or After	30-Nov-20*	14-Mar-21	30-Nov-20	14-Mar-21	14-Nov-20	26-Feb-21	-16		30-Nov-20*							
05-2740	Gatehouses (2.15.03)	135	135	0%	0%	135	Start On or After	01-May-21*	12-Sep-21	01-May-21	12-Sep-21	18-Apr-22	30-Aug-22	352									
05-2750	Weighbridge office (2.15.04)	105	105	0%	0%	105	Start On or After	30-Nov-20*	14-Mar-21	30-Nov-20	14-Mar-21	12-Feb-21	27-May-21	74		30-Nov-20*							
EP_SP_66_12-WP5A-M35-4.05.01.16	AIP Auxillary Plant Systems (2.16)	501	672	5.99%		471		13-May-20 A	15-Mar-22	30-Nov-20	15-Mar-22	25-Apr-21	02-Dec-22	262									
05-2760	Maintenance workshops (2.16.01)	135	135	0%	0%	135	Start On or After	01-Nov-21*	15-Mar-22	01-Nov-21	15-Mar-22	21-Jul-22	02-Dec-22	262									
05-2770	Vehicle Fuel Filling Station (2.16.02)	135	135	0%	0%	135		30-Nov-20	13-Apr-21	30-Nov-20	13-Apr-21	22-Jan-22	05-Jun-22	418		30-Nov-20							
05-2780	Stores systems (2.16.03)	135	135	0%	0%	135	Start On or After	22-Jan-21*	05-Jun-21	22-Jan-21	05-Jun-21	08-Mar-22	20-Jul-22	410					22-Jan-21*				
05-2780-1(5a)	IWMF Laboratory (2.16.04)	135	336	0%	5%	135		13-May-20 A	13-Apr-21	30-Nov-20	13-Apr-21	03-Sep-21	15-Jan-22	277									
05-2780-2(5a)	hoisting systems (2.16.09)	135	210	0%	5%	135		16-Sep-20 A	13-Apr-21	30-Nov-20	13-Apr-21	25-Apr-21	06-Sep-21	146									
EP_SP_66_12-WP5A-M35-4.05.02	DDA Design Package Submissions	2239	2330	30.95%		1546		08-Oct-18 A	22-Feb-25	30-Nov-20	22-Feb-25	04-Oct-20	12-Oct-25	232									
EP_SP_66_12-WP5A-M35-4.05.02.01	DDA Process and Layout Design (2.1)	301	810	30.23%		210		10-Apr-19 A	27-Jun-21	30-Nov-20	27-Jun-21	01-Nov-20	03-Feb-22	221									
EP_SP_66_12-WP5A-M35-4.05.02.01.1	MSW treatment process design for incineration (2.1.13)	166	326	36.75%		105		23-Apr-20 A	14-Mar-21	30-Nov-20	14-Mar-21	18-Nov-20	04-Dec-21	265									
05-5090	Incineration System (2.1.13.01) (2 Packages) (link up with 05-3610)	105	198	28.57%	5%	75		30-Jul-20 A	12-Feb-21	30-Nov-20	12-Feb-21	18-Nov-20	01-Feb-21	-11									Incineration
05-5100	Heat Recovery Boiler (2.1.13.02) (2 Packages) (link up with 05-3620)	105	296	28.57%	5%	75	Start On or After	23-Apr-20 A	12-Feb-21	30-Nov-20	12-Feb-21	18-Nov-20	01-Feb-21	-11									Heat Recov
05-5110	Ash Cranes (2.1.13.04) (2 Packages)	105	105	0%	0%	105		30-Nov-20	14-Mar-21	30-Nov-20	14-Mar-21	19-Dec-20	02-Apr-21	19		30-Nov-20							
05-5120	Leachate Collection and Treatment (2.1.13.05) (2 Packages)	105	105	0%	0%	105	Start On or After	30-Nov-20*	14-Mar-21	30-Nov-20	14-Mar-21	17-May-21	29-Aug-21	168		30-Nov-20*							
05-5130	Waste Water Treatment System (2.1.13.06) (2 Packages)	105	105	0%	0%	105		30-Nov-20	14-Mar-21	30-Nov-20	14-Mar-21	22-Aug-21	04-Dec-21	265		30-Nov-20							

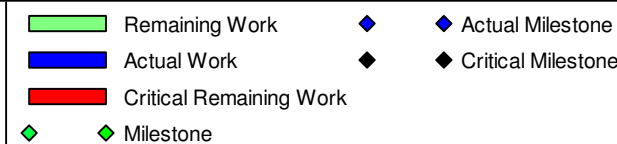
### 3-Month Rolling Programme (November 2020)

Remaining Work: Green bar  
Actual Work: Blue bar  
Critical Remaining Work: Red bar  
Milestone: Green diamond

Actual Milestone: Blue diamond  
Critical Milestone: Black diamond

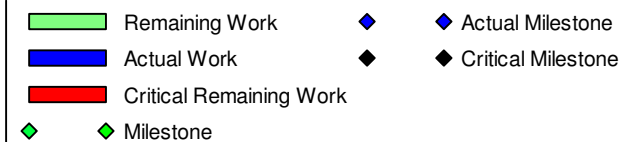
Activity ID	Activity Name	Original Duration	At Completion Duration	Duration % Complete	Activity % Complete	Remaining Duration	Primary Constraint	Start	Finish	Current Start	Current Finish	Late Start	Late Finish	Total Float	M36 Remarks	2020				2021			
																Nov 36	Dec 37	Jan 38	Feb 39	Nov 36	Dec 37	Jan 38	Feb 39
05-5140	Overall Plan Water Scheme (2.1.13.07)	105	105	0%	0%	105		30-Nov-20	14-Mar-21	30-Nov-20	14-Mar-21	18-Feb-21	02-Jun-21	80									
05-5150	Boiler Feed Water System (2.1.13.03) (2 Packages)	105	194	28.57%	45%	75	Start On or After	03-Aug-20 A	12-Feb-21	30-Nov-20	12-Feb-21	18-Nov-20	01-Feb-21	-11									Boiler Feed
<b>EP_SP_66_12-WP5A-M35-4.05.02.01.2 MSW treatment process design for mechanical treatment</b>		<b>210</b>	<b>210</b>	<b>0%</b>		<b>210</b>		<b>30-Nov-20</b>	<b>27-Jun-21</b>	<b>30-Nov-20</b>	<b>27-Jun-21</b>	<b>30-Nov-20</b>	<b>27-Jun-21</b>	<b>0</b>									
05-3500	Mechanical Treatment Plant	105	105	0%	0%	105	Start On or After	15-Mar-21*	27-Jun-21	15-Mar-21	27-Jun-21	15-Mar-21	27-Jun-21	0									
05-3510	Water Treatment Plant and Boiler Water Treatment (Demin Unit) Plant	105	105	0%	0%	105		30-Nov-20	14-Mar-21	30-Nov-20	14-Mar-21	30-Nov-20	14-Mar-21	0									
<b>EP_SP_66_12-WP5A-M35-4.05.02.01.3 Waste heat recovery and Power generation system (2.1</b>		<b>166</b>	<b>329</b>	<b>36.75%</b>		<b>105</b>		<b>20-Apr-20 A</b>	<b>14-Mar-21</b>	<b>30-Nov-20</b>	<b>14-Mar-21</b>	<b>19-Nov-20</b>	<b>03-Feb-22</b>	<b>326</b>									
05-5220	Power Island (Steam Turbine Generator, Pressure Reducing and Desuperheating Station, Air Cooled Condenser)	105	294	0%	5%	105		25-May-20 A	14-Mar-21	30-Nov-20	14-Mar-21	19-Nov-20	03-Mar-21	-11									
05-5230	Closed Circuit Cooling Water System	105	329	0%	5%	105		20-Apr-20 A	14-Mar-21	30-Nov-20	14-Mar-21	22-Oct-21	03-Feb-22	326									
05-5240	Compressed Air Plants	105	329	0%	5%	105		20-Apr-20 A	14-Mar-21	30-Nov-20	14-Mar-21	22-Oct-21	03-Feb-22	326									
<b>EP_SP_66_12-WP5A-M35-4.05.02.01.4 Flue gas treatment process design for incineration (2.1</b>		<b>105</b>	<b>296</b>	<b>28.57%</b>		<b>75</b>		<b>23-Apr-20 A</b>	<b>12-Feb-21</b>	<b>30-Nov-20</b>	<b>12-Feb-21</b>	<b>18-Nov-20</b>	<b>01-Feb-21</b>	<b>-11</b>									Flue Gas Tre
05-4660	Flue Gas Treatment System (2 Packages)	105	296	28.57%	5%	75	Start On or After	23-Apr-20 A	12-Feb-21	30-Nov-20	12-Feb-21	18-Nov-20	01-Feb-21	-11									
05-4980	Boiler ash and APC residue handling and solidification (2 Packages)	105	296	28.57%	5%	75	Start On or After	23-Apr-20 A	12-Feb-21	30-Nov-20	12-Feb-21	18-Nov-20	01-Feb-21	-11									Boiler ash a
<b>EP_SP_66_12-WP5A-M35-4.05.02.01.5 Logistic arrangement design for MSW and Ash and Re</b>		<b>196</b>	<b>252</b>	<b>46.43%</b>		<b>105</b>		<b>06-Jul-20 A</b>	<b>14-Mar-21</b>	<b>30-Nov-20</b>	<b>14-Mar-21</b>	<b>19-Dec-20</b>	<b>27-Dec-21</b>	<b>288</b>									
05-4390	Weighbridge Systems	105	105	0%	0%	105		30-Nov-20	14-Mar-21	30-Nov-20	14-Mar-21	17-Jun-21	29-Sep-21	199									
05-4400	Waste Crane and Grapple System	105	252	0%	5%	105		06-Jul-20 A	14-Mar-21	30-Nov-20	14-Mar-21	19-Dec-20	02-Apr-21	19									
05-4410	Mechanical Shredder	105	105	0%	0%	105		30-Nov-20	14-Mar-21	30-Nov-20	14-Mar-21	14-Sep-21	27-Dec-21	288									
<b>EP_SP_66_12-WP5A-M35-4.05.02.01.6 Site Master Layout Plan and Plant Layout (2.1.18)</b>		<b>105</b>	<b>105</b>	<b>0%</b>		<b>105</b>		<b>04-Feb-21</b>	<b>19-May-21</b>	<b>04-Feb-21</b>	<b>19-May-21</b>	<b>09-Feb-21</b>	<b>24-May-21</b>	<b>5</b>									
05-3520	Site Master Layout Plan and Plant Layout	105	105	0%	0%	105		04-Feb-21	19-May-21	04-Feb-21	19-May-21	09-Feb-21	24-May-21	5									04-Feb-21
<b>EP_SP_66_12-WP5A-M35-4.05.02.01.7 Statutory Fire Compliance (2.1.26)</b>		<b>60</b>	<b>784</b>	<b>0%</b>		<b>184</b>		<b>10-Apr-19 A</b>	<b>01-Jun-21</b>	<b>30-Nov-20</b>	<b>01-Jun-21</b>	<b>01-Nov-20</b>	<b>03-May-21</b>	<b>-29</b>									
05-4420	Fire Safety Compliance	60	784	0%	0%	184		10-Apr-19 A	01-Jun-21	30-Nov-20	01-Jun-21	01-Nov-20	03-May-21	-29									
<b>EP_SP_66_12-WP5A-M35-4.05.02.02 DDA Ground Treatment, Reclamation, Seawall, Breakwater</b>		<b>983</b>	<b>1054</b>	<b>71.96%</b>		<b>270</b>		<b>08-Oct-18 A</b>	<b>26-Aug-21</b>	<b>30-Nov-20</b>	<b>26-Aug-21</b>	<b>22-Jan-21</b>	<b>25-Sep-22</b>	<b>395</b>									
05-3430	Deep Cement Mixing Design (2.2.27.01)	60	347	100%	100%	0		08-Oct-18 A	20-Sep-19 A														
05-3430-1(M24)	Deep Cement Mixing Design (2.2.27.02) 3 Packages	60	448	100%	100%	0		08-Apr-19 A	29-Jun-20 A														
05-3440	Reclamation design (2.2.19)	105	647	100%	100%	0		18-Dec-18 A	25-Sep-20 A														29-Sep-20 A
05-3450	Seawall design (2.2.20)	60	779	50%	65%	30		12-Nov-18 A	29-Dec-20	30-Nov-20	29-Dec-20	22-Jan-21	20-Feb-21	53									29-Dec-20, Seawall design (2.2.20), Seawall design
05-3460	Breakwater design (2.2.21)	105	703	0%	65%	105		12-Apr-19 A	14-Mar-21	30-Nov-20	14-Mar-21	13-Jun-22	25-Sep-22	560									
05-3470	Berth design (2.2.22)	60	790	50%	65%	30		01-Nov-18 A	29-Dec-20	30-Nov-20	29-Dec-20	22-Jan-21	20-Feb-21	53									29-Dec-20, Berth design (2.2.22), Berth design (2.2.22)
05-3480	Onshore crane Facility (2.2.23)	135	135	0%	0%	135		14-Apr-21	26-Aug-21	14-Apr-21	26-Aug-21	15-Sep-21	27-Jan-22	154									
05-3490	Onshore vessel power supply system (2.2.24)	135	135	0%	0%	135		30-Dec-20	13-May-21	30-Dec-20	13-May-21	30-Apr-21	11-Sep-21	121									30-Dec-20
<b>EP_SP_66_12-WP5A-M35-4.05.02.03 DDA Incineration Plant Buildings (2.3)</b>		<b>1174</b>	<b>1264</b>	<b>54.6%</b>		<b>533</b>		<b>30-Nov-18 A</b>	<b>16-May-22</b>	<b>30-Nov-20</b>	<b>16-May-22</b>	<b>20-Oct-20</b>	<b>22-Jul-23</b>	<b>432</b>									
<b>EP_SP_66_12-WP5A-M35-4.05.02.03.1 General Layout Drawings and Fire Safety Strategy (2.3.</b>		<b>135</b>	<b>135</b>	<b>0%</b>		<b>135</b>		<b>20-May-21</b>	<b>01-Oct-21</b>	<b>20-May-21</b>	<b>01-Oct-21</b>	<b>25-May-21</b>	<b>24-Jun-22</b>	<b>266</b>									
05-3290	Process Building	135	135	0%	0%	135		20-May-21	01-Oct-21	20-May-21	01-Oct-21	25-May-21	06-Oct-21	5									
05-3300	ACC Equipment Structure	135	135	0%	0%	135		20-May-21	01-Oct-21	20-May-21	01-Oct-21	25-May-21	06-Oct-21	5									
05-3310	Turbine Hall Building	135	135	0%	0%	135		20-May-21	01-Oct-21	20-May-21	01-Oct-21	28-May-21	09-Oct-21	8									
05-3320	Compressor and CCCW Building	135	135	0%	0%	135		20-May-21	01-Oct-21	20-May-21	01-Oct-21	10-Feb-22	24-Jun-22	266									
05-3330	Chimney and viewing platform	135	135	0%	0%	135		20-May-21	01-Oct-21	20-May-21	01-Oct-21	25-May-21	06-Oct-21	5									
05-3340	Elevated Drive Way and Associated Structures	135	135	0%	0%	135		20-May-21	01-Oct-21	20-May-21	01-Oct-21	18-Jan-22	01-Jun-22	243									
05-3350	Reception Pavilion	135	135	0%	0%	135		20-May-21	01-Oct-21	20-May-21	01-Oct-21	05-Feb-22	19-Jun-22	261									
<b>EP_SP_66_12-WP5A-M35-4.05.02.03.2 Foundation design (2.3.13)</b>		<b>455</b>	<b>455</b>	<b>0%</b>		<b>455</b>		<b>16-Feb-21</b>	<b>16-May-22</b>	<b>16-Feb-21</b>	<b>16-May-22</b>	<b>02-Jul-21</b>	<b>01-Feb-23</b>	<b>261</b>									
05-3220	Process Building Waste Burker, Tipping Hall, Basin Area and Workshop	137	137	0%	0%	137		03-Jun-21	17-Oct-21	03-Jun-21	17-Oct-21	26-Aug-21	09-Jan-22	84									
05-3230	ACC Equipment Structure	137	137	0%	0%	137		16-Feb-21	02-Jul-21	16-Feb-21	02-Jul-21	06-Dec-21	21-Apr-22	293									16-Feb-21
05-3240	Turbine Hall Building	137	137	0%	0%	137		24-Jun-21	07-Nov-21	24-Jun-21	07-Nov-21	02-Jul-21	15-Nov-21	8									
05-3250	Compressor and CCCW Building	137	137	0%	0%	137		24-Jun-21	07-Nov-21	24-Jun-21	07-Nov-21	17-Mar-22	31-Jul-22	266									
05-3260	Chimney and viewing platform	137	137	0%	0%	137		02-Oct-21	15-Feb-22	02-Oct-21	15-Feb-22	17-Nov-21	02-Apr-22	46									

### 3-Month Rolling Programme (November 2020)



Activity ID	Activity Name	Original Duration	At Completion Duration	Duration % Complete	Activity % Complete	Remaining Duration	Primary Constraint	Start	Finish	Current Start	Current Finish	Late Start	Late Finish	Total Float	M36 Remarks	2020				2021						
																Nov	Dec	Jan	Feb	Nov	Dec	Jan	Feb			
05-3270	Elevated Drive Way and Associated Structures Foundation Design	137	137	0%	0%	137		24-Jun-21	07-Nov-21	24-Jun-21	07-Nov-21	22-Feb-22	08-Jul-22	243												
05-3280	Reception Pavilion	137	137	0%	0%	137		31-Dec-21	16-May-22	31-Dec-21	16-May-22	18-Sep-22	01-Feb-23	261												
<b>EP_SP_66_12-WP5A-M35-4.05.02.03.3 Structural design (2.3.14)</b>		<b>354</b>	<b>1055</b>	<b>8.47%</b>		<b>324</b>		<b>30-Nov-18 A</b>	<b>19-Oct-21</b>	<b>30-Nov-20</b>	<b>19-Oct-21</b>	<b>09-Apr-21</b>	<b>22-Mar-23</b>	<b>519</b>												
05-5330	Process Building	189	189	0%	0%	189		30-Nov-20	06-Jun-21	30-Nov-20	06-Jun-21	09-Apr-21	14-Oct-21	130												
05-5340	ACC Equipment Structure	189	154	100%	0%	0	Start On or After	30-Nov-18 A	03-May-19 A																	
05-5350	Turbine Hall Building (2.3.14.03)	189	189	0%	0%	189	Start On or After	30-Nov-20*	06-Jun-21	30-Nov-20	06-Jun-21	13-Apr-22	18-Oct-22	499												
05-5360	Compressor and CCCW Building	189	189	0%	0%	189	Start On or After	30-Nov-20*	06-Jun-21	30-Nov-20	06-Jun-21	15-Jul-22	19-Jan-23	592												
05-5370	Chimney	189	189	0%	0%	189	Start On or After	14-Apr-21*	19-Oct-21	14-Apr-21	19-Oct-21	28-Jun-21	02-Jan-22	75												
05-5380	Chimney, Elevated Drive Way and associated structures and Reception Pavilion	189	189	0%	0%	189	Start On or After	30-Nov-20*	06-Jun-21	30-Nov-20	06-Jun-21	14-May-22	18-Nov-22	530												
05-5390	Reception Pavilion Structural Design	189	375	0%	5%	189	Start On or After	28-May-20 A	06-Jun-21	30-Nov-20	06-Jun-21	15-Sep-22	22-Mar-23	654												
<b>EP_SP_66_12-WP5A-M35-4.05.02.03.4 Electrical and instrumentation works design (2.3.15)</b>		<b>240</b>	<b>309</b>	<b>0%</b>		<b>240</b>		<b>22-Sep-20 A</b>	<b>27-Jul-21</b>	<b>30-Nov-20</b>	<b>27-Jul-21</b>	<b>11-Nov-20</b>	<b>08-Feb-22</b>	<b>196</b>												
05-3360	11kV/380V Power Transformers and 11kV Earthing Transformer	105	234	0%	5%	105		22-Sep-20 A	13-May-21	29-Jan-21	13-May-21	30-May-21	11-Sep-21	121												
05-3370	E&IC Package 1 (Process Island) (8 Packages)	240	240	0%	0%	240		30-Nov-20	27-Jul-21	30-Nov-20	27-Jul-21	11-Nov-20	08-Jul-21	-19												
05-3380	E&IC Package 2 (Power Island) (7 Packages)	105	105	0%	0%	105		30-Nov-20	14-Mar-21	30-Nov-20	14-Mar-21	26-Mar-21	08-Jul-21	116												
05-3400	E&IC Package 3 (Balance of Plant) (5 Packages)	105	105	0%	0%	105		30-Nov-20	14-Mar-21	30-Nov-20	14-Mar-21	27-Oct-21	08-Feb-22	331												
<b>EP_SP_66_12-WP5A-M35-4.05.02.03.8 Operation Management System (2.3.15.04)</b>		<b>196</b>	<b>280</b>	<b>46.43%</b>		<b>105</b>		<b>08-Jun-20 A</b>	<b>14-Mar-21</b>	<b>30-Nov-20</b>	<b>14-Mar-21</b>	<b>29-Jul-21</b>	<b>10-Nov-21</b>	<b>241</b>												
05-3390	Supervisory Control/Data Acquisition/Distributed Control (SCADA/DCS) System (12 Packages)	105	280	0%	5%	105		08-Jun-20 A	14-Mar-21	30-Nov-20	14-Mar-21	29-Jul-21	10-Nov-21	241												
05-3420	Automatic License Plate and Container Recognition System (ALPCRS)	105	105	0%	0%	105		30-Nov-20	14-Mar-21	30-Nov-20	14-Mar-21	29-Jul-21	10-Nov-21	241												
<b>EP_SP_66_12-WP5A-M35-4.05.02.03.5 Mechanical works design (2.3.16)</b>		<b>926</b>	<b>761</b>	<b>88.66%</b>		<b>105</b>		<b>13-Feb-19 A</b>	<b>14-Mar-21</b>	<b>30-Nov-20</b>	<b>14-Mar-21</b>	<b>20-Oct-20</b>	<b>22-Jul-23</b>	<b>860</b>												
<b>EP_SP_66_12-WP5A-M35-4.05.02.03.5.1 Plant and Equipment</b>		<b>746</b>	<b>761</b>	<b>85.92%</b>		<b>105</b>		<b>13-Feb-19 A</b>	<b>14-Mar-21</b>	<b>30-Nov-20</b>	<b>14-Mar-21</b>	<b>18-Nov-20</b>	<b>27-Dec-21</b>	<b>288</b>												
05-3580	Weighbridge Systems	105	157	0%	5%	105		09-Oct-20 A	14-Mar-21	30-Nov-20	14-Mar-21	17-Jun-21	29-Sep-21	199												
05-3590	Waste Crane and Grapple System	105	166	0%	5%	105		30-Sep-20 A	14-Mar-21	30-Nov-20	14-Mar-21	19-Dec-20	02-Apr-21	19												
05-3600	Mechanical Shredder	105	157	0%	0%	105		09-Oct-20 A	14-Mar-21	30-Nov-20	14-Mar-21	14-Sep-21	27-Dec-21	288												
05-3610	Incineration System (9 Packages)	105	746	14.3%	5%	90		13-Feb-19 A	27-Feb-21	30-Nov-20	27-Feb-21	18-Nov-20	16-Feb-21	-11												
05-3620	Heat Recovery Boiler (8 Packages)	105	666	2%	5%	103		17-May-19 A	12-Mar-21	30-Nov-20	12-Mar-21	18-Nov-20	01-Mar-21	-11												
05-3630	Boiler Feed Water Systems (4 Packages)	105	593	14%	5%	90		16-Jul-19 A	28-Feb-21	30-Nov-20	28-Feb-21	18-Nov-20	17-Feb-21	-11												
05-3640	Ash cranes	105	105	0%	0%	105		30-Nov-20	14-Mar-21	30-Nov-20	14-Mar-21	19-Dec-20	02-Apr-21	19												
05-3650	Leachate collection and treatment	105	105	0%	0%	105	Start On or After	30-Nov-20*	14-Mar-21	30-Nov-20	14-Mar-21	17-May-21	29-Aug-21	168												
05-3790	Flue Gas Treatment System (12 Packages)	105	486	29.52%	5%	74		15-Oct-19 A	11-Feb-21	30-Nov-20	11-Feb-21	18-Nov-20	31-Jan-21	-11												
05-3800	Boiler ash and APC residue handling and solidification	105	249	28.57%	5%	75	Start On or After	09-Jun-20 A	12-Feb-21	30-Nov-20	12-Feb-21	18-Nov-20	01-Feb-21	-11												
05-3810	Steam Turbine Generator (STG) and Pressure Reducing and Desuperheating Station (PRDS)	105	228	0%	5%	105		30-Jul-20 A	14-Mar-21	30-Nov-20	14-Mar-21	19-Nov-20	03-Mar-21	-11												
05-3820	Air cooled condenser	105	228	0%	5%	105		30-Jul-20 A	14-Mar-21	30-Nov-20	14-Mar-21	19-Nov-20	03-Mar-21	-11												
05-3825(3)	Closed Circuit Cooling Water System	105	228	0%	5%	105		30-Jul-20 A	14-Mar-21	30-Nov-20	14-Mar-21	15-May-21	27-Aug-21	166												
05-3830	Compressed Air Plants	105	406	100%	100%	0		13-Feb-19 A	25-Mar-20 A																	
<b>EP_SP_66_12-WP5A-M35-4.05.02.03.5.2 Process Pipeworks (Incl. Ductworks) and Valves</b>		<b>380</b>	<b>669</b>	<b>72.37%</b>		<b>105</b>		<b>16-May-19 A</b>	<b>14-Mar-21</b>	<b>30-Nov-20</b>	<b>14-Mar-21</b>	<b>20-Oct-20</b>	<b>22-Feb-22</b>	<b>345</b>												
05-3840	Process island (furnace-boiler-FGC)	105	646	21.9%	0%	82		16-May-19 A	19-Feb-21	30-Nov-20	19-Feb-21	07-Oct-21	27-Dec-21	311												
05-4350	Pipebridge A (Between Process Island & Turbine Hall)	105	105	0%	0%	105		30-Nov-20	14-Mar-21	30-Nov-20	14-Mar-21	10-Nov-21	22-Feb-22	345												
05-4360	Compressed Air Plant area	105	105	0%	0%	105		30-Nov-20	14-Mar-21	30-Nov-20	14-Mar-21	17-Jun-21	29-Sep-21	199												
05-4370	Pipebridge B (Between CCCW Area & Turbine Hall)	105	105	0%	0%	105		30-Nov-20	14-Mar-21	30-Nov-20	14-Mar-21	10-Nov-21	22-Feb-22	345												
05-4380	Pipebridge C (Between Turbine Hall & ACC Yard)	105	105	0%	0%	105		30-Nov-20	14-Mar-21	30-Nov-20	14-Mar-21	10-Nov-21	22-Feb-22	345												
05-4950	Turbine Hall	105	198	28.57%	0%	75		30-Jul-20 A	12-Feb-21	30-Nov-20	12-Feb-21	20-Oct-20	02-Jan-21	-41												
05-4960	ACC Yard	105	105	0%	0%	105		30-Nov-20	14-Mar-21	30-Nov-20	14-Mar-21	08-Jul-21	20-Oct-21	220												

## 3-Month Rolling Programme (November 2020)



Activity ID	Activity Name	Original Duration	At Completion Duration	Duration % Complete	Activity % Complete	Remaining Duration	Primary Constraint	Start	Finish	Correct Start	Current Finish	Late Start	Late Finish	Total Float	M36 Remarks	2020				2021				
																Nov 36	Dec 37	Jan 38	Feb 39	Nov 36	Dec 37	Jan 38	Feb 39	
05-4970	CCCW Area	105	105	0%	0%	105		30-Nov-20	14-Mar-21	30-Nov-20	14-Mar-21	08-Jul-21	20-Oct-21	220										
<b>EP_SP_66_12-WP5A-M35-4.05.02.03.5.3 Process steel structure support (For equipment, piping and structural steelwork) (3 Packages)</b>																								
05-3530	Process island (furnace-boiler-FGC) (3 Packages)	105	375	100%	100%	0		02-Aug-19 A	11-Aug-20 A															
05-3540	Pipebridge A (Between Process island & Turbine Hall)	105	199	0%	5%	105		28-Aug-20 A	14-Mar-21	30-Nov-20	14-Mar-21	16-May-22	28-Aug-22	532										
05-3550	Turbine Hall	105	157	67.62%	0%	34		30-Jul-20 A	02-Jan-21	30-Nov-20	02-Jan-21	04-Nov-20	07-Dec-20	-26										
05-3560	Pipebridge B (Between CCCW Area & Turbine Hall)	105	199	0%	5%	105		28-Aug-20 A	14-Mar-21	30-Nov-20	14-Mar-21	09-Apr-23	22-Jul-23	860										
05-3570	Pipebridge C (Between Turbine Hall & ACC Yard)	105	199	0%	5%	105		28-Aug-20 A	14-Mar-21	30-Nov-20	14-Mar-21	09-Apr-23	22-Jul-23	860										
<b>EP_SP_66_12-WP5A-M35-4.05.02.03.5.4 Equipment and piping insulation</b>																								
05-4500	Incineration System	105	105	0%	0%	105	Start On or After	30-Nov-20*	14-Mar-21	30-Nov-20	14-Mar-21	24-Jun-21	06-Oct-21	206										
05-4510	Heat Recovery Boiler	105	105	0%	0%	105	Start On or After	30-Nov-20*	14-Mar-21	30-Nov-20	14-Mar-21	24-Jun-21	06-Oct-21	206										
05-4520	Boiler Feed Water Systems	105	105	0%	0%	105	Start On or After	30-Nov-20*	14-Mar-21	30-Nov-20	14-Mar-21	08-Jul-21	20-Oct-21	220										
05-4530	Flue Gas Treatment System	105	105	0%	0%	105	Start On or After	30-Nov-20*	14-Mar-21	30-Nov-20	14-Mar-21	24-Jun-21	06-Oct-21	206										
05-4540	Boiler ash and APC residue handling and solidification	105	105	0%	0%	105	Start On or After	30-Nov-20*	14-Mar-21	30-Nov-20	14-Mar-21	08-Jul-21	20-Oct-21	220										
05-4550	Steam Turbine Generator (STG) and Pressure Reducing and Desuperheating Station (PRDS)	105	105	0%	0%	105		30-Nov-20	14-Mar-21	30-Nov-20	14-Mar-21	24-Jun-21	06-Oct-21	206										
05-4560	Air cooled condenser	105	105	0%	0%	105		30-Nov-20	14-Mar-21	30-Nov-20	14-Mar-21	08-Jul-21	20-Oct-21	220										
05-4570	Closed Circuit Cooling Water System	105	105	0%	0%	105		30-Nov-20	14-Mar-21	30-Nov-20	14-Mar-21	15-May-21	27-Aug-21	166										
<b>EP_SP_66_12-WP5A-M35-4.05.02.03.6 Fire services installation design (2.3.17)</b>																								
05-3660	Fire Systems	90	90	0%	0%	90		02-Jun-21	30-Aug-21	02-Jun-21	30-Aug-21	04-May-21	01-Aug-21	-29										
05-3670	Fire engineering	90	90	0%	0%	90		04-Mar-21	01-Jun-21	04-Mar-21	01-Jun-21	04-May-21	01-Aug-21	61								04-Mar-21		
05-3680	FS schematics	105	105	0%	0%	105		27-May-21	08-Sep-21	27-May-21	08-Sep-21	19-Apr-21	01-Aug-21	-38										
<b>EP_SP_66_12-WP5A-M35-4.05.02.03.7 Building services design (excluding fire services installation) (2.3.18)</b>																								
05-3690	Electrical Services and Lighting (7 Packages)	135	135	0%	0%	135		02-Mar-21	14-Jul-21	02-Mar-21	14-Jul-21	14-Feb-21	28-Jun-21	-16								02-Mar-21		
05-3700	MVAC (6 Packages)	135	135	0%	0%	135		15-Mar-21	27-Jul-21	15-Mar-21	27-Jul-21	06-Apr-21	18-Aug-21	22										
05-3710	Odour Control	135	135	0%	0%	135		15-Mar-21	27-Jul-21	15-Mar-21	27-Jul-21	06-Apr-21	18-Aug-21	22										
05-3720	Plumbing (7 Packages)	135	135	0%	0%	135	Start On or After	25-Jun-21*	07-Nov-21	25-Jun-21	07-Nov-21	25-Jun-21	06-Nov-21	0										
05-3730	Drainage (7 Packages)	135	135	0%	0%	135		03-Jan-21	17-May-21	03-Jan-21	17-May-21	19-Apr-21	31-Aug-21	106								03-Jan-21		
05-3740	ELV (7 Packages)	135	135	0%	0%	135		14-Apr-21	26-Aug-21	14-Apr-21	26-Aug-21	14-Feb-21	28-Jun-21	-59										
05-3750	Lifts and Escalators	135	135	0%	0%	135		14-May-21	25-Sep-21	14-May-21	25-Sep-21	11-Jul-21	22-Nov-21	58										
05-3770	Building Management System (BMS) ELV (7 Packages)	135	135	0%	0%	135		31-Jan-21	14-Jun-21	31-Jan-21	14-Jun-21	29-Jun-21	10-Nov-21	149								31-Jan-21		
05-3780	Vehicle & Container Wash System	135	135	0%	0%	135		28-Jun-21	09-Nov-21	28-Jun-21	09-Nov-21	10-Jul-21	21-Nov-21	12										
05-3780-1 (5a)	Process CCTV System	135	135	0%	0%	135		14-Apr-21	26-Aug-21	14-Apr-21	26-Aug-21	10-Jul-21	21-Nov-21	87										
05-3780-1(M20)	Water Cannon System	135	135	0%	0%	135		14-Apr-21	26-Aug-21	14-Apr-21	26-Aug-21	10-Jul-21	21-Nov-21	87										
<b>EP_SP_66_12-WP5A-M35-4.05.02.04 DDA Mechanical Treatment Plant Building (2.4)</b>																								
05-5160	Architectural Design (2.4.25)	105	105	0%	0%	105	Start On or After	29-Jan-21*	13-May-21	29-Jan-21	13-May-21	04-Jan-21	18-Apr-21	-25								29-Jan-21*		
05-5170	Foundation design (2.4.13)	105	105	0%	0%	105		30-Nov-20	14-Mar-21	30-Nov-20	14-Mar-21	08-Nov-21	20-Feb-22	343								30-Nov-20		
05-5180	Structural design (2.4.14)	105	105	0%	0%	105		14-May-21	26-Aug-21	14-May-21	26-Aug-21	11-Aug-22	23-Nov-22	454										
05-5190	Electrical and instrumentation works design (2.4.15)	105	105	0%	0%	105		23-Sep-21	05-Jan-22	23-Sep-21	05-Jan-22	12-Aug-21	24-Nov-21	-42										
05-5200	Mechanical works design (2.4.16)	105	105	0%	0%	105		15-Mar-21	27-Jun-21	15-Mar-21	27-Jun-21	15-Mar-21	27-Jun-21	0										
05-5210	Fire services installation design (2.4.17)	105	105	0%	0%	105		14-May-21	26-Aug-21	14-May-21	26-Aug-21	19-Apr-21	01-Aug-21	-25										
<b>EP_SP_66_12-WP5A-M35-4.05.02.04.7 Building services design (excluding fire services installation) (2.4.20)</b>																								
05-3850	LV and Emergency Power Distribution Design	135	135	0%	0%	135	Start On or After	02-Mar-21*	14-Jul-21	02-Mar-21	14-Jul-21	14-Feb-21	28-Jun-21	-16								02-Mar-21*		
05-3860	MVAC	135	135	0%	0%	135		15-Mar-21	27-Jul-21	15-Mar-21	27-Jul-21	06-Apr-21	18-Aug-21	22										

**3-Month Rolling Programme (November 2020)**

■ Remaining Work      ◆ Actual Milestone  
■ Actual Work      ◆ Critical Milestone  
■ Critical Remaining Work  
◆ Milestone

Activity ID	Activity Name	Original Duration	At Completion Duration	Duration % Complete	Activity % Complete	Remaining Duration	Primary Constraint	Start	Finish	Correct Start	Current Finish	Late Start	Late Finish	Total Float	M36 Remarks	2020		2021	
																Nov	Dec	Jan	Feb
05-3870	Odour Control	135	135	0%	0%	135		15-Mar-21	27-Jul-21	15-Mar-21	27-Jul-21	06-Apr-21	18-Aug-21	22					
05-3880	Plumbing	135	135	0%	0%	135		28-Jun-21	09-Nov-21	28-Jun-21	09-Nov-21	25-Jun-21	06-Nov-21	-3					
05-3890	Drainage	135	135	0%	0%	135		25-Feb-21	10-Jul-21	25-Feb-21	10-Jul-21	19-Apr-21	31-Aug-21	52				25-Feb-21	
05-3900	Lighting and small power	135	135	0%	0%	135		14-Apr-21	26-Aug-21	14-Apr-21	26-Aug-21	14-Feb-21	28-Jun-21	-59					
05-3910	Lifts and Escalators	135	135	0%	0%	135		28-Jun-21	09-Nov-21	28-Jun-21	09-Nov-21	07-Aug-21	19-Dec-21	40					
05-3910-1(M20)	Building Management System (BMS)	135	135	0%	0%	135		28-Jun-21	09-Nov-21	28-Jun-21	09-Nov-21	29-Jun-21	10-Nov-21	1					
<b>EP_SP_66_12-WP5A-M35-4.05.02.05 DDA Wastewater Treatment Plant (2.5)</b>		<b>330</b>	<b>330</b>	<b>0%</b>	<b>0%</b>	<b>330</b>		<b>30-Nov-20</b>	<b>25-Oct-21</b>	<b>30-Nov-20</b>	<b>25-Oct-21</b>	<b>14-Feb-21</b>	<b>20-Feb-22</b>	<b>118</b>					
05-3920	Architectural Design (2.5.25)	75	75	0%	0%	75		29-Jan-21	13-Apr-21	29-Jan-21	13-Apr-21	27-May-21	09-Aug-21	118				29-Jan-21	
05-3930	Foundation design (2.5.13)	135	135	0%	0%	135		30-Nov-20	13-Apr-21	30-Nov-20	13-Apr-21	28-Aug-21	09-Jan-22	271		30-Nov-20			
05-3940	Structural design (2.5.14)	135	135	0%	0%	135		13-Jun-21	25-Oct-21	13-Jun-21	25-Oct-21	09-Oct-21	20-Feb-22	118					
05-3950	Electrical and instrumentation works design (2.5.15)	135	135	0%	0%	135		30-Nov-20	13-Apr-21	30-Nov-20	13-Apr-21	04-May-21	15-Sep-21	155		30-Nov-20			
05-3960	Mechanical works design (2.5.16) (2 Packages)	105	105	0%	0%	105		15-Mar-21	27-Jun-21	15-Mar-21	27-Jun-21	03-Jun-21	15-Sep-21	80					
05-3970	Fire services installation design (2.5.17) (2 Packages)	105	105	0%	0%	105	Start On or After	28-Feb-21*	12-Jun-21	28-Feb-21	12-Jun-21	19-Apr-21	01-Aug-21	50				28-Feb-21*	
<b>EP_SP_66_12-WP5A-M35-4.05.02.05.7 Building services design (excluding fire services instal</b>		<b>225</b>	<b>225</b>	<b>0%</b>	<b>0%</b>	<b>225</b>		<b>15-Mar-21</b>	<b>25-Oct-21</b>	<b>15-Mar-21</b>	<b>25-Oct-21</b>	<b>14-Feb-21</b>	<b>06-Nov-21</b>	<b>12</b>					
05-3980	LV and Emergency Power Distribution Design for IWWMF Waste Water Treatment Plant	135	135	0%	0%	135		15-Mar-21	27-Jul-21	15-Mar-21	27-Jul-21	14-Feb-21	28-Jun-21	-29					
05-3990	MVAC	120	120	0%	0%	120		30-Mar-21	27-Jul-21	30-Mar-21	27-Jul-21	21-Apr-21	18-Aug-21	22					
05-4000	Odour Control	135	135	0%	0%	135		15-Mar-21	27-Jul-21	15-Mar-21	27-Jul-21	06-Apr-21	18-Aug-21	22					
05-4010	Plumbing	135	135	0%	0%	135		13-Jun-21	25-Oct-21	13-Jun-21	25-Oct-21	25-Jun-21	06-Nov-21	12					
05-4020	Drainage	135	135	0%	0%	135		14-Apr-21	26-Aug-21	14-Apr-21	26-Aug-21	19-Apr-21	31-Aug-21	5					
05-4030	ELV	135	135	0%	0%	135		30-Mar-21	11-Aug-21	30-Mar-21	11-Aug-21	14-Feb-21	28-Jun-21	-44					
<b>EP_SP_66_12-WP5A-M35-4.05.02.06 DDA Water Treatment Plant Building (2.6)</b>		<b>345</b>	<b>345</b>	<b>0%</b>	<b>0%</b>	<b>345</b>		<b>30-Nov-20</b>	<b>09-Nov-21</b>	<b>30-Nov-20</b>	<b>09-Nov-21</b>	<b>04-Jan-21</b>	<b>23-Nov-22</b>	<b>379</b>					
05-4050	Architectural Design (2.6.25)	105	105	0%	0%	105		29-Jan-21	13-May-21	29-Jan-21	13-May-21	04-Jan-21	18-Apr-21	-25				29-Jan-21	
05-4060	Foundation design (2.6.13)	180	180	0%	0%	180		30-Nov-20	28-May-21	30-Nov-20	28-May-21	25-Aug-21	20-Feb-22	268		30-Nov-20			
05-4070	Structural design (2.6.14)	165	165	0%	0%	165		14-May-21	25-Oct-21	14-May-21	25-Oct-21	12-Jun-22	23-Nov-22	394					
05-4080	Electrical and instrumentation works design (2.6.15)	105	105	0%	0%	105		30-Nov-20	14-Mar-21	30-Nov-20	14-Mar-21	03-Jun-21	15-Sep-21	185		30-Nov-20			
05-4090	Mechanical works design (2.6.16)	105	105	0%	0%	105		30-Nov-20	14-Mar-21	30-Nov-20	14-Mar-21	03-Jun-21	15-Sep-21	185		30-Nov-20			
05-4100	Fire services installation design (2.6.17)	105	105	0%	0%	105		14-May-21	26-Aug-21	14-May-21	26-Aug-21	19-Apr-21	01-Aug-21	-25					
<b>EP_SP_66_12-WP5A-M35-4.05.02.06.7 Building services design (excluding fire services instal</b>		<b>257</b>	<b>257</b>	<b>0%</b>	<b>0%</b>	<b>257</b>		<b>25-Feb-21</b>	<b>09-Nov-21</b>	<b>25-Feb-21</b>	<b>09-Nov-21</b>	<b>14-Feb-21</b>	<b>06-Nov-21</b>	<b>-3</b>					
05-4110	Electrical Services and Lighting	135	135	0%	0%	135		14-Apr-21	26-Aug-21	14-Apr-21	26-Aug-21	14-Feb-21	28-Jun-21	-59					
05-4120	MVAC	135	135	0%	0%	135		15-Mar-21	27-Jul-21	15-Mar-21	27-Jul-21	06-Apr-21	18-Aug-21	22					
05-4140	Plumbing	135	135	0%	0%	135		28-Jun-21	09-Nov-21	28-Jun-21	09-Nov-21	25-Jun-21	06-Nov-21	-3					
05-4150	Drainage	135	135	0%	0%	135		25-Feb-21	10-Jul-21	25-Feb-21	10-Jul-21	19-Apr-21	31-Aug-21	52				25-Feb-21	
05-4160	ELV	135	135	0%	0%	135		14-Apr-21	26-Aug-21	14-Apr-21	26-Aug-21	14-Feb-21	28-Jun-21	-59					
<b>EP_SP_66_12-WP5A-M35-4.05.02.07 DDA Administration Building (2.7)</b>		<b>318</b>	<b>318</b>	<b>0%</b>	<b>0%</b>	<b>318</b>		<b>29-Jan-21</b>	<b>12-Dec-21</b>	<b>29-Jan-21</b>	<b>12-Dec-21</b>	<b>14-Feb-21</b>	<b>24-Dec-22</b>	<b>377</b>					
05-4170	Architectural Design (2.7.21)	105	105	0%	0%	105	Start On or After	29-Jan-21*	13-May-21	29-Jan-21	13-May-21	20-Mar-21	02-Jul-21	50				29-Jan-21*	
05-4180	Foundation design (2.7.11)	195	195	0%	0%	195		14-May-21	24-Nov-21	14-May-21	24-Nov-21	20-Feb-22	02-Sep-22	282					
05-4190	Structural design (2.7.12)	195	195	0%	0%	195		01-Jun-21	12-Dec-21	01-Jun-21	12-Dec-21	13-Jun-22	24-Dec-22	377					
05-4200	Electrical and instrumentation works design (2.7.13)	135	135	0%	0%	135		28-Jun-21	09-Nov-21	28-Jun-21	09-Nov-21	13-Jul-21	24-Nov-21	15					
05-4210	Fire services installation design (2.7.14)	135	135	0%	0%	135		01-Apr-21	14-Aug-21	01-Apr-21	14-Aug-21	20-Mar-21	01-Aug-21	-12					
<b>EP_SP_66_12-WP5A-M35-4.05.02.07.6 Building services design (excluding fire services instal</b>		<b>257</b>	<b>257</b>	<b>0%</b>	<b>0%</b>	<b>257</b>		<b>25-Feb-21</b>	<b>09-Nov-21</b>	<b>25-Feb-21</b>	<b>09-Nov-21</b>	<b>14-Feb-21</b>	<b>22-Nov-21</b>	<b>13</b>					
05-4220	Electrical Services and Lighting	135	135	0%	0%	135		14-Apr-21	26-Aug-21	14-Apr-21	26-Aug-21	14-Feb-21	28-Jun-21	-59					
05-4230	MVAC	135	135	0%	0%	135		15-Mar-21	27-Jul-21	15-Mar-21	27-Jul-21	06-Apr-21	18-Aug-21	22					

**3-Month Rolling Programme (November 2020)**

- Remaining Work
- Actual Work
- Critical Remaining Work
- Milestone
- Actual Milestone
- Critical Milestone

Activity ID	Activity Name	Original Duration	At Completion Duration	Duration % Complete	Activity % Complete	Remaining Duration	Primary Constraint	Start	Finish	Current Start	Current Finish	Late Start	Late Finish	Total Float	M36 Remarks	2020		2021	
																Nov	Dec	Jan	Feb
																36	37	38	39
05-4250	Plumbing	135	135	0%	0%	135		28-Jun-21	09-Nov-21	28-Jun-21	09-Nov-21	25-Jun-21	06-Nov-21	-3					
05-4260	Drainage	135	135	0%	0%	135		25-Feb-21	10-Jul-21	25-Feb-21	10-Jul-21	19-Apr-21	31-Aug-21	52				25-Feb-21	
05-4270	ELV	135	135	0%	0%	135		14-Apr-21	26-Aug-21	14-Apr-21	26-Aug-21	14-Feb-21	28-Jun-21	-59					
05-4280	Lifts and Escalators	135	135	0%	0%	135		28-Jun-21	09-Nov-21	28-Jun-21	09-Nov-21	11-Jul-21	22-Nov-21	13					
05-4280-1(M20)	Building Management System (BMS)	135	135	0%	0%	135		16-Jun-21	28-Oct-21	16-Jun-21	28-Oct-21	29-Jun-21	10-Nov-21	13					
<b>EP_SP_66_12-WP5A-M35-4.05.02.08 DDA W/MF Substation (2.8)</b>		<b>270</b>	<b>521</b>	<b>9.7%</b>		<b>244</b>		<b>27-Feb-20 A</b>	<b>31-Jul-21</b>	<b>30-Nov-20</b>	<b>31-Jul-21</b>	<b>05-Dec-20</b>	<b>30-Apr-22</b>	<b>273</b>					
05-4290	Architectural Design (2.8.25)	105	105	0%	0%	105	Start On or After	30-Nov-20*	14-Mar-21	30-Nov-20	14-Mar-21	05-Dec-20	19-Mar-21	5		30-Nov-20*			
05-4300	Foundation design (2.8.13)	200	200	0%	0%	200		30-Nov-20	17-Jun-21	30-Nov-20	17-Jun-21	11-Jul-21	26-Jan-22	223		30-Nov-20			
05-4310	Structural design (2.8.14)	195	472	0%	5%	195		27-Feb-20 A	12-Jun-21	30-Nov-20	12-Jun-21	18-Oct-21	30-Apr-22	322					
05-4320	Electrical and instrumentation works design (2.8.15)	135	135	0%	0%	135		25-Feb-21	09-Jul-21	25-Feb-21	09-Jul-21	24-Feb-21	08-Jul-21	-1				25-Feb-21	
05-4340	Fire services installation design (2.8.17)	135	135	0%	0%	135		18-Mar-21	31-Jul-21	18-Mar-21	31-Jul-21	20-Mar-21	01-Aug-21	1					
<b>EP_SP_66_12-WP5A-M35-4.05.02.08.7 Building services design (excluding fire services instal</b>		<b>135</b>	<b>135</b>	<b>0%</b>		<b>135</b>		<b>30-Nov-20</b>	<b>13-Apr-21</b>	<b>30-Nov-20</b>	<b>13-Apr-21</b>	<b>14-Feb-21</b>	<b>10-Nov-21</b>	<b>211</b>					
05-4990	Electrical Services and Lighting	135	135	0%	0%	135		30-Nov-20	13-Apr-21	30-Nov-20	13-Apr-21	14-Feb-21	28-Jun-21	76		30-Nov-20			
05-5000	MVAC	135	135	0%	0%	135		30-Nov-20	13-Apr-21	30-Nov-20	13-Apr-21	06-Apr-21	18-Aug-21	127		30-Nov-20			
05-5010	Plumbing	135	135	0%	0%	135		30-Nov-20	13-Apr-21	30-Nov-20	13-Apr-21	25-Jun-21	06-Nov-21	207		30-Nov-20			
05-5020	Drainage	135	135	0%	0%	135		30-Nov-20	13-Apr-21	30-Nov-20	13-Apr-21	19-Apr-21	31-Aug-21	140		30-Nov-20			
05-5030	ELV	135	135	0%	0%	135		30-Nov-20	13-Apr-21	30-Nov-20	13-Apr-21	14-Feb-21	28-Jun-21	76		30-Nov-20			
05-5030-1(M20)	Building Management System (BMS)	135	135	0%	0%	135		30-Nov-20	13-Apr-21	30-Nov-20	13-Apr-21	29-Jun-21	10-Nov-21	211		30-Nov-20			
<b>EP_SP_66_12-WP5A-M35-4.05.02.1 DDA Chimney</b>		<b>181</b>	<b>181</b>	<b>0%</b>		<b>181</b>		<b>27-Feb-21</b>	<b>26-Aug-21</b>	<b>27-Feb-21</b>	<b>26-Aug-21</b>	<b>21-Aug-21</b>	<b>02-Jan-22</b>	<b>129</b>					
<b>EP_SP_66_12-WP5A-M35-4.05.02.1.1 Building services design (excluding fire services install</b>		<b>181</b>	<b>181</b>	<b>0%</b>		<b>181</b>		<b>27-Feb-21</b>	<b>26-Aug-21</b>	<b>27-Feb-21</b>	<b>26-Aug-21</b>	<b>21-Aug-21</b>	<b>02-Jan-22</b>	<b>129</b>					
05-6000(5a)	Electrical Services and Lighting	135	135	0%	0%	135		14-Apr-21	26-Aug-21	14-Apr-21	26-Aug-21	21-Aug-21	02-Jan-22	129					
05-6010(5a)	MVAC	135	135	0%	0%	135		14-Apr-21	26-Aug-21	14-Apr-21	26-Aug-21	21-Aug-21	02-Jan-22	129					
05-6020(5a)	Plumbing	135	135	0%	0%	135		14-Apr-21	26-Aug-21	14-Apr-21	26-Aug-21	21-Aug-21	02-Jan-22	129					
05-6030(5a)	Drainage	135	135	0%	0%	135		14-Apr-21	26-Aug-21	14-Apr-21	26-Aug-21	21-Aug-21	02-Jan-22	129					
05-6040(5a)	ELV	135	135	0%	0%	135		14-Apr-21	26-Aug-21	14-Apr-21	26-Aug-21	21-Aug-21	02-Jan-22	129					
05-6050(5a)	Lift	135	135	0%	0%	135		14-Apr-21	26-Aug-21	14-Apr-21	26-Aug-21	21-Aug-21	02-Jan-22	129					
05-6060(5a)	Building Management System (BMS)	135	135	0%	0%	135		27-Feb-21	11-Jul-21	27-Feb-21	11-Jul-21	21-Aug-21	02-Jan-22	175				27-Feb-21	
<b>EP_SP_66_12-WP5A-M35-4.05.02.2 DDA Weighbridge</b>		<b>135</b>	<b>135</b>	<b>0%</b>		<b>135</b>		<b>14-Apr-21</b>	<b>26-Aug-21</b>	<b>14-Apr-21</b>	<b>26-Aug-21</b>	<b>29-Mar-21</b>	<b>10-Aug-21</b>	<b>-16</b>					
<b>EP_SP_66_12-WP5A-M35-4.05.02.2.1 Building services design (excluding fire services install</b>		<b>135</b>	<b>135</b>	<b>0%</b>		<b>135</b>		<b>14-Apr-21</b>	<b>26-Aug-21</b>	<b>14-Apr-21</b>	<b>26-Aug-21</b>	<b>29-Mar-21</b>	<b>10-Aug-21</b>	<b>-16</b>					
05-7000(5a)	Electrical Services and Lighting	135	135	0%	0%	135		14-Apr-21	26-Aug-21	14-Apr-21	26-Aug-21	29-Mar-21	10-Aug-21	-16					
05-7010(5a)	MVAC	135	135	0%	0%	135		14-Apr-21	26-Aug-21	14-Apr-21	26-Aug-21	29-Mar-21	10-Aug-21	-16					
05-7020(5a)	Plumbing	135	135	0%	0%	135		14-Apr-21	26-Aug-21	14-Apr-21	26-Aug-21	29-Mar-21	10-Aug-21	-16					
05-7030(5a)	Drainage	135	135	0%	0%	135		14-Apr-21	26-Aug-21	14-Apr-21	26-Aug-21	29-Mar-21	10-Aug-21	-16					
05-7040(5a)	ELV	135	135	0%	0%	135		14-Apr-21	26-Aug-21	14-Apr-21	26-Aug-21	29-Mar-21	10-Aug-21	-16					
05-7050(5a)	Lift	135	135	0%	0%	135		14-Apr-21	26-Aug-21	14-Apr-21	26-Aug-21	29-Mar-21	10-Aug-21	-16					
05-7060(5a)	Building Management System (BMS)	135	135	0%	0%	135		14-Apr-21	26-Aug-21	14-Apr-21	26-Aug-21	29-Mar-21	10-Aug-21	-16					
<b>EP_SP_66_12-WP5A-M35-4.05.02.09 DDA Air Quality Monitoring Stations (2.9)</b>		<b>135</b>	<b>135</b>	<b>0%</b>		<b>135</b>		<b>12-Feb-21</b>	<b>26-Jun-21</b>	<b>12-Feb-21</b>	<b>26-Jun-21</b>	<b>14-Jan-21</b>	<b>28-May-21</b>	<b>-29</b>					
05-4490	Design of the Air Quality Monitoring Stations (2.9.03)	135	135	0%	0%	135		12-Feb-21	26-Jun-21	12-Feb-21	26-Jun-21	14-Jan-21	28-May-21	-29				12-Feb-21	
<b>EP_SP_66_12-WP5A-M35-4.05.02.10 DDA Roads and Utilities (2.10)</b>		<b>405</b>	<b>405</b>	<b>0%</b>		<b>405</b>		<b>30-Nov-20</b>	<b>08-Jan-22</b>	<b>30-Nov-20</b>	<b>08-Jan-22</b>	<b>04-Oct-20</b>	<b>13-Dec-23</b>	<b>704</b>					
<b>EP_SP_66_12-WP5A-M35-4.05.02.10.1 Permanent road works layout on the Artificial Island (2</b>		<b>135</b>	<b>135</b>	<b>0%</b>		<b>135</b>		<b>30-Nov-20</b>	<b>13-Apr-21</b>	<b>30-Nov-20</b>	<b>13-Apr-21</b>	<b>19-Mar-23</b>	<b>13-Dec-23</b>	<b>974</b>					
05-4470	Roads and hardstandings layout	135	135	0%	0%	135		30-Nov-20	13-Apr-21	30-Nov-20	13-Apr-21	19-Mar-23	31-Jul-23	839		30-Nov-20			
05-4480	Road signage and markings	135	135	0%	0%	135		30-Nov-20	13-Apr-21	30-Nov-20	13-Apr-21	01-Aug-23	13-Dec-23	974		30-Nov-20			
<b>EP_SP_66_12-WP5A-M35-4.05.02.10.2 Sewerage design on the Artificial Island (2.10.1.4)</b>		<b>315</b>	<b>315</b>	<b>0%</b>		<b>315</b>		<b>30-Nov-20</b>	<b>10-Oct-21</b>	<b>30-Nov-20</b>	<b>10-Oct-21</b>	<b>19-Apr-21</b>	<b>04-Sep-22</b>	<b>329</b>					
05-4430	Foul Sewerage	135	135	0%	0%	135		30-Nov-20	13-Apr-21	30-Nov-20	13-Apr-21	19-Apr-21	31-Aug-21	140		30-Nov-20			

**3-Month Rolling Programme (November 2020)**  
 Page 14 of 21

Remaining Work      ◆ Actual Milestone  
 Actual Work      ◆ Critical Milestone  
 Critical Remaining Work  
 Milestone

Activity ID	Activity Name	Original Duration	At Completion Duration	Duration % Complete	Activity % Complete	Remaining Duration	Primary Constraint	Start	Finish	Current Start	Current Finish	Late Start	Late Finish	Total Float	M36 Remarks	2020				2021			
																Nov 36	Dec 37	Jan 38	Feb 39	Nov 36	Dec 37	Jan 38	Feb 39
05-4440	Contaminated Sewerage	135	135	0%	0%	135		29-May-21	10-Oct-21	29-May-21	10-Oct-21	23-Apr-22	04-Sep-22	329									
<b>EP_SP_66_12-WP5A-M35-4.05.02.10.3 Drainage system design on the Artificial Island (2.10.15)</b>		315	315	0%	0%	315		30-Nov-20	10-Oct-21	30-Nov-20	10-Oct-21	19-Apr-21	08-Nov-21	29									
05-5310	Surface water Drainage System	135	135	0%	0%	135		30-Nov-20	13-Apr-21	30-Nov-20	13-Apr-21	19-Apr-21	31-Aug-21	140		30-Nov-20							
05-5320	First Flush Drainage System concept	135	135	0%	0%	135		29-May-21	10-Oct-21	29-May-21	10-Oct-21	27-Jun-21	08-Nov-21	29									
<b>EP_SP_66_12-WP5A-M35-4.05.02.10.4 Water supply system design on the Artificial Island (2.1</b>		289	289	0%	0%	289		26-Dec-20	10-Oct-21	26-Dec-20	10-Oct-21	06-Apr-21	04-Oct-22	359									
05-5250	Potable Water Distribution System	135	135	0%	0%	135		29-May-21	10-Oct-21	29-May-21	10-Oct-21	03-Apr-22	15-Aug-22	309									
05-5260	Reuse Water Distribution System	135	135	0%	0%	135		26-Dec-20	09-May-21	26-Dec-20	09-May-21	03-Apr-22	15-Aug-22	463			26-Dec-20						
05-5270	Reuse Water Distribution System - (Irrigation System)	135	135	0%	0%	135		26-Dec-20	09-May-21	26-Dec-20	09-May-21	25-Jun-21	06-Nov-21	181			26-Dec-20						
05-5280	Rainwater harvesting System	135	135	0%	0%	135		29-May-21	10-Oct-21	29-May-21	10-Oct-21	25-Jun-21	06-Nov-21	27									
05-5290	Water Tanks	135	135	0%	0%	135		29-May-21	10-Oct-21	29-May-21	10-Oct-21	23-May-22	04-Oct-22	359									
05-5300	External FS Systems	135	135	0%	0%	135		29-May-21	10-Oct-21	29-May-21	10-Oct-21	23-May-22	04-Oct-22	359									
05-5300-1(M24)	E&M system for seawater intake and brine discharge (2.10.04.07)	90	90	0%	0%	90		30-Dec-20	29-Mar-21	30-Dec-20	29-Mar-21	27-Aug-21	24-Nov-21	240			30-Dec-20						
05-5300-2(M24)	Building Services system for seawater intake and brine discharge (2.10.04.09)	90	90	0%	0%	90		28-Feb-21	28-May-21	28-Feb-21	28-May-21	09-Aug-21	06-Nov-21	162								28-Feb-21	
05-5300-3(5a)	Chemical scrubber system for odour control (2.10.16.10)	135	135	0%	0%	135		14-Apr-21	26-Aug-21	14-Apr-21	26-Aug-21	06-Apr-21	18-Aug-21	-8									
<b>EP_SP_66_12-WP5A-M35-4.05.02.10.6 Design of telecommunication and other utilities (2.10.1</b>		405	405	0%	0%	405		30-Nov-20	08-Jan-22	30-Nov-20	08-Jan-22	04-Oct-20	07-May-23	484									
05-3400 (M21)	Computerised Maintenance Management System (CMMS)	105	105	0%	0%	105		26-Sep-21	08-Jan-22	26-Sep-21	08-Jan-22	29-Jul-21	10-Nov-21	-59									
05-3410 (M21)	Information and Document Management System (IDMS)	105	105	0%	0%	105		26-Sep-21	08-Jan-22	26-Sep-21	08-Jan-22	29-Jul-21	10-Nov-21	-59									
05-4580	Power Distribution System concept / schematics	135	135	0%	0%	135		28-Jun-21	09-Nov-21	28-Jun-21	09-Nov-21	07-Aug-21	19-Dec-21	40									
05-4590	Site Lighting Concept / Schematics	135	135	0%	0%	135		30-Nov-20	13-Apr-21	30-Nov-20	13-Apr-21	04-Oct-20	15-Feb-21	-57		30-Nov-20							
05-4600	Lightning Protection System concept / schematics	135	135	0%	0%	135		12-Jan-21	26-May-21	12-Jan-21	26-May-21	18-Apr-21	30-Aug-21	96				12-Jan-21					
05-4610	Site ELV Network System - Communications System concept / schematics	135	135	0%	0%	135		28-Jun-21	09-Nov-21	28-Jun-21	09-Nov-21	07-Aug-21	19-Dec-21	40									
05-4620	Site ELV Network System - Security Systems concept / schematics	135	135	0%	0%	135		28-Jun-21	09-Nov-21	28-Jun-21	09-Nov-21	07-Aug-21	19-Dec-21	40									
05-4630	Site ELV Network System - Navigation aids concept / schematics	135	135	0%	0%	135		28-Jun-21	09-Nov-21	28-Jun-21	09-Nov-21	07-Aug-21	19-Dec-21	40									
05-4640	Microwave transmission of FS direct link	135	135	0%	0%	135		14-May-21	25-Sep-21	14-May-21	25-Sep-21	07-Aug-21	19-Dec-21	85									
05-4650	Fuel Handling System concept / schematics	135	135	0%	0%	135		31-Mar-21	12-Aug-21	31-Mar-21	12-Aug-21	24-Dec-22	07-May-23	633									
05-4650-1(M34)	Design of Pipe / Utilities Trenches concept	60	60	0%	0%	60		15-Mar-21	13-May-21	15-Mar-21	13-May-21	12-Sep-21	10-Nov-21	181									
05-4650-2(M34)	Sitewide Utilities Trenches Design	60	60	0%	0%	60		15-Mar-21	13-May-21	15-Mar-21	13-May-21	12-Sep-21	10-Nov-21	181									
05-5400 (M22)	Automatic Traffic Control System (ATCS)	135	135	0%	0%	135		24-May-21	05-Oct-21	24-May-21	05-Oct-21	29-Jun-21	10-Nov-21	36									
<b>EP_SP_66_12-WP5A-M35-4.05.02.10.7 Utility ducts/Pipebridges design (2.10.26)</b>		195	195	0%	0%	195		29-Jan-21	11-Aug-21	29-Jan-21	11-Aug-21	02-Feb-21	13-Dec-21	124									
05-5040	Design of Pipe / Utilities	135	135	0%	0%	135		28-Feb-21	12-Jul-21	28-Feb-21	12-Jul-21	01-Aug-21	13-Dec-21	154								28-Feb-21	
05-5050	Utility ducts network	135	135	0%	0%	135		28-Feb-21	12-Jul-21	28-Feb-21	12-Jul-21	18-Jul-21	29-Nov-21	140								28-Feb-21	
05-5060	Pipebridge network - Layout	135	135	0%	0%	135		28-Feb-21	12-Jul-21	28-Feb-21	12-Jul-21	01-Aug-21	13-Dec-21	154								28-Feb-21	
05-5070	Pipebridge network - Foundation Plan	135	135	0%	0%	135		29-Jan-21	12-Jun-21	29-Jan-21	12-Jun-21	02-Feb-21	16-Jun-21	4				29-Jan-21					
05-5080	Pipebridge network - Structure Plan	135	135	0%	0%	135		30-Mar-21	11-Aug-21	30-Mar-21	11-Aug-21	01-Aug-21	13-Dec-21	124									
<b>EP_SP_66_12-WP5A-M35-4.05.02.11 DDA Architectural, Finishes and Landscaping Works (2.11)</b>		330	330	0%	0%	330		30-Dec-20	24-Nov-21	30-Dec-20	24-Nov-21	02-Feb-21	25-Jun-23	578									
<b>EP_SP_66_12-WP5A-M35-4.05.02.11.1 External and internal finishes design for Incineration P</b>		137	137	0%	0%	137		30-Dec-20	15-May-21	30-Dec-20	15-May-21	23-Jul-21	06-May-22	356									
05-4670	External and internal finishes design for Incineration Plant Building (13 Packages)	137	137	0%	0%	137	Start On or After	30-Dec-20*	15-May-21	30-Dec-20	15-May-21	22-Sep-21	05-Feb-22	266			30-Dec-20*						
05-4680	External and internal finishes design for ACC Equipment Structure (3 Packages)	137	137	0%	0%	137	Start On or After	30-Dec-20*	15-May-21	30-Dec-20	15-May-21	22-Sep-21	05-Feb-22	266			30-Dec-20*						
05-4690	External and internal finishes design for Turbine Hall Building (7 Packages)	137	137	0%	0%	137	Start On or After	30-Dec-20*	15-May-21	30-Dec-20	15-May-21	21-Dec-21	06-May-22	356			30-Dec-20*						
05-4700	External and internal finishes design for Air Compressor Building (7 Packages)	137	137	0%	0%	137	Start On or After	30-Dec-20*	15-May-21	30-Dec-20	15-May-21	23-Jul-21	06-Dec-21	205			30-Dec-20*						
05-4710	External and internal finishes design for Chimney (10 Packages)	137	137	0%	0%	137	Start On or After	30-Dec-20*	15-May-21	30-Dec-20	15-May-21	21-Nov-21	06-Apr-22	326			30-Dec-20*						
05-4720	External and internal finishes design for Reception Pavilion (10 Packages)	137	137	0%	0%	137	Start On or After	30-Dec-20*	15-May-21	30-Dec-20	15-May-21	21-Nov-21	06-Apr-22	326			30-Dec-20*						
<b>EP_SP_66_12-WP5A-M35-4.05.02.11.2 External and internal finishes design for MF Plant Buil</b>		137	137	0%	0%	137		01-Mar-21	15-Jul-21	01-Mar-21	15-Jul-21	28-Dec-21	13-May-22	302									

### 3-Month Rolling Programme (November 2020)

Page 15 of 21

■ Remaining Work
 ◆ Actual Milestone  
■ Actual Work
 ◆ Critical Milestone  
■ Critical Remaining Work  
◆ Milestone







Activity ID	Activity Name	Original Duration	At Completion Duration	Duration % Complete	Activity % Complete	Remaining Duration	Primary Constraint	Start	Finish	Current Start	Current Finish	Late Start	Late Finish	Total Float	M36 Remarks	2020				2021				
																Nov	Dec	Jan	Feb	Nov	Dec	Jan	Feb	
																36	37	38	39					
06-1190-1(1)	Mechanical Equipment Material Submission and Approval	180	180	0%	0%	180		15-Mar-21	10-Sep-21	15-Mar-21	10-Sep-21	05-Dec-21	02-Jun-22	265										
06-1190-2(1)	Pipe Material Submission and Approval	180	180	0%	0%	180		28-Jun-21	24-Dec-21	28-Jun-21	24-Dec-21	16-Sep-21	14-Mar-22	80										
06-1190-3(1)	Electrical and Instrumentation Material Submission and Approval	180	180	0%	0%	180		14-Apr-21	10-Oct-21	14-Apr-21	10-Oct-21	16-Sep-21	14-Mar-22	155										
06-1200-1(1)	Mechanical Equipment Procurement (Incl. FAT)	550	550	0%	0%	550		03-Jan-22	06-Jul-23	03-Jan-22	06-Jul-23	05-Dec-21	07-Jun-23	-29										
06-1200-2(1)	Pipe Material Procurement (Incl. FAT)	450	450	0%	0%	450		03-Jan-22	28-Mar-23	03-Jan-22	28-Mar-23	15-Mar-22	07-Jun-23	71										
06-1200-3(1)	Electrical and Instrumentation Material Procurement (Incl. FAT)	450	450	0%	0%	450		03-Jan-22	28-Mar-23	03-Jan-22	28-Mar-23	15-Mar-22	07-Jun-23	71										
06-1220	Delivery to Site	60	60	0%	0%	60		07-Jul-23	04-Sep-23	07-Jul-23	04-Sep-23	08-Jun-23	06-Aug-23	-29										
<b>EP_SP_66_12-WP5A-M35-4.06.6 Procurement for Desal &amp; Demin Plant Equipment</b>		<b>804</b>	<b>804</b>	<b>0%</b>	<b>0%</b>	<b>804</b>		<b>15-Mar-21</b>	<b>27-May-23</b>	<b>15-Mar-21</b>	<b>27-May-23</b>	<b>16-Sep-21</b>	<b>06-Aug-23</b>	<b>71</b>										
06-1230-1(1)	Mechanical Equipment Material Submission and Approval	180	180	0%	0%	180		15-Mar-21	10-Sep-21	15-Mar-21	10-Sep-21	15-Nov-21	13-May-22	245										
06-1230-2(1)	Pipe Material Submission and Approval	180	180	0%	0%	180		15-Mar-21	10-Sep-21	15-Mar-21	10-Sep-21	16-Sep-21	14-Mar-22	185										
06-1230-3(1)	Electrical and Instrumentation Material Submission and Approval	180	180	0%	0%	180		15-Mar-21	10-Sep-21	15-Mar-21	10-Sep-21	16-Sep-21	14-Mar-22	185										
06-1240-1(1)	Mechanical Equipment Procurement (Incl. FAT)	450	450	0%	0%	450		03-Jan-22	28-Mar-23	03-Jan-22	28-Mar-23	15-Mar-22	07-Jun-23	71										
06-1240-2(1)	Pipe Material Procurement (Incl. FAT)	450	450	0%	0%	450		03-Jan-22	28-Mar-23	03-Jan-22	28-Mar-23	15-Mar-22	07-Jun-23	71										
06-1240-3(1)	Electrical and Instrumentation Material Procurement (Incl. FAT)	450	450	0%	0%	450		03-Jan-22	28-Mar-23	03-Jan-22	28-Mar-23	15-Mar-22	07-Jun-23	71										
06-1260	Delivery to Site	60	60	0%	0%	60		29-Mar-23	27-May-23	29-Mar-23	27-May-23	08-Jun-23	06-Aug-23	71										
<b>EP_SP_66_12-WP5A-M35-4.06.7 Procurement for HV Transformers and Associated</b>		<b>785</b>	<b>1255</b>	<b>3.82%</b>		<b>755</b>		<b>19-Jul-19 A</b>	<b>24-Dec-22</b>	<b>30-Nov-20</b>	<b>24-Dec-22</b>	<b>31-Oct-20</b>	<b>05-Dec-22</b>	<b>-19</b>										
<b>EP_SP_66_12-WP5A-M35-4.06.7.1 Procurement of Transformers &amp; EDG</b>		<b>766</b>	<b>1236</b>	<b>3.92%</b>		<b>736</b>		<b>19-Jul-19 A</b>	<b>05-Dec-22</b>	<b>30-Nov-20</b>	<b>05-Dec-22</b>	<b>31-Oct-20</b>	<b>05-Nov-22</b>	<b>-30</b>										
06-1270(1)	Submission and Approval of Transformers Supplier	90	73	100%	100%	0		19-Jul-20 A	30-Sep-20 A															
06-1280(1)	Procurement of Transformers	550	1086	0%	0%	586		19-Jul-19 A	08-Jul-22	30-Nov-20	08-Jul-22	31-Oct-20	08-Jun-22	-30										
06-1290(1)	Factory Acceptance Test (FAT)	120	120	0%	0%	120		09-Jun-22	06-Oct-22	09-Jun-22	06-Oct-22	10-May-22	06-Sep-22	-30										
06-1300	Delivery to Site	60	60	0%	0%	60		07-Oct-22	05-Dec-22	07-Oct-22	05-Dec-22	07-Sep-22	05-Nov-22	-30										
<b>EP_SP_66_12-WP5A-M35-4.06.7.2 Procurement of Switchboard/Pannels and Cables</b>		<b>533</b>	<b>533</b>	<b>0%</b>		<b>533</b>		<b>10-Jul-21</b>	<b>24-Dec-22</b>	<b>10-Jul-21</b>	<b>24-Dec-22</b>	<b>09-Jul-21</b>	<b>05-Dec-22</b>	<b>-19</b>										
06-2090(1)	Material Submission and Approval	90	90	0%	0%	90		10-Jul-21	07-Oct-21	10-Jul-21	07-Oct-21	09-Jul-21	06-Oct-21	-1										
06-2100(1)	Material & Equipment Procurement	395	395	0%	0%	395		28-Jul-21	26-Aug-22	28-Jul-21	26-Aug-22	09-Jul-21	07-Aug-22	-19										
06-2110(1)	Factory Acceptance Test (FAT)	60	60	0%	0%	60		27-Aug-22	25-Oct-22	27-Aug-22	25-Oct-22	08-Aug-22	06-Oct-22	-19										
06-2120(1)	Delivery to Site	60	60	0%	0%	60		26-Oct-22	24-Dec-22	26-Oct-22	24-Dec-22	07-Oct-22	05-Dec-22	-19										
<b>EP_SP_66_12-WP5A-M35-4.06.8 Procurement for Control SCADA Systems</b>		<b>855</b>	<b>855</b>	<b>0%</b>		<b>855</b>		<b>09-Jan-22</b>	<b>12-May-24</b>	<b>09-Jan-22</b>	<b>12-May-24</b>	<b>11-Nov-21</b>	<b>14-Mar-24</b>	<b>-59</b>										
06-1310	Material Submission and Approval	90	90	0%	0%	90		09-Jan-22	08-Apr-22	09-Jan-22	08-Apr-22	11-Nov-21	08-Feb-22	-59										
06-1320	Material & Equipment Procurement	615	615	0%	0%	615		09-Apr-22	14-Dec-23	09-Apr-22	14-Dec-23	09-Feb-22	16-Oct-23	-59										
06-1330	Factory Acceptance Test (FAT)	120	120	0%	0%	120		15-Nov-23	13-Mar-24	15-Nov-23	13-Mar-24	17-Sep-23	14-Jan-24	-59										
06-1340	Delivery to Site	60	60	0%	0%	60		14-Mar-24	12-May-24	14-Mar-24	12-May-24	15-Jan-24	14-Mar-24	-59										
<b>EP_SP_66_12-WP5A-M35-4.06.9 Procurement for Onshore Crane at Berth</b>		<b>735</b>	<b>735</b>	<b>0%</b>		<b>735</b>		<b>14-Apr-21</b>	<b>18-Apr-23</b>	<b>14-Apr-21</b>	<b>18-Apr-23</b>	<b>30-Sep-21</b>	<b>19-Sep-23</b>	<b>154</b>										
06-1350	Supplier Submission and Approval	120	120	0%	0%	120		14-Apr-21	11-Aug-21	14-Apr-21	11-Aug-21	30-Sep-21	27-Jan-22	169										
06-1360	Material & Equipment Procurement	450	450	0%	0%	450		27-Aug-21	19-Nov-22	27-Aug-21	19-Nov-22	28-Jan-22	22-Apr-23	154										
06-1370	Factory Acceptance Test (FAT)	90	90	0%	0%	90		20-Nov-22	17-Feb-23	20-Nov-22	17-Feb-23	23-Apr-23	21-Jul-23	154										
06-1380	Delivery to Site	60	60	0%	0%	60		18-Feb-23	18-Apr-23	18-Feb-23	18-Apr-23	22-Jul-23	19-Sep-23	154										
<b>EP_SP_66_12-WP5A-M35-4.06.10 Procurement and Off-site Fabrication of Pipe Bric</b>		<b>690</b>	<b>690</b>	<b>0%</b>		<b>690</b>		<b>14-Apr-21</b>	<b>04-Mar-23</b>	<b>14-Apr-21</b>	<b>04-Mar-23</b>	<b>21-Sep-21</b>	<b>22-Jul-23</b>	<b>140</b>										
06-1390(1)	Material Submission and Approval	90	90	0%	0%	90		14-Apr-21	12-Jul-21	14-Apr-21	12-Jul-21	21-Sep-21	19-Dec-21	160										
06-1400	Material & Equipment Procurement	450	450	0%	0%	450		13-Jul-21	05-Oct-22	13-Jul-21	05-Oct-22	30-Nov-21	22-Feb-23	140										
06-1410	Factory Acceptance Test (FAT)	90	90	0%	0%	90		06-Oct-22	03-Jan-23	06-Oct-22	03-Jan-23	23-Feb-23	23-May-23	140										
06-1420	Delivery to Site	60	60	0%	0%	60		04-Jan-23	04-Mar-23	04-Jan-23	04-Mar-23	24-May-23	22-Jul-23	140										
<b>EP_SP_66_12-WP5A-M35-4.06.11 Procurement for LV Electrical System for On-site</b>		<b>620</b>	<b>620</b>	<b>0%</b>		<b>620</b>		<b>06-Jan-22</b>	<b>17-Sep-23</b>	<b>06-Jan-22</b>	<b>17-Sep-23</b>	<b>25-Nov-21</b>	<b>06-Aug-23</b>	<b>-42</b>										
06-1430(1)	Material Submission and Approval	120	120	0%	0%	120		06-Jan-22	05-May-22	06-Jan-22	05-May-22	25-Nov-21	24-Mar-22	-42										

### 3-Month Rolling Programme (November 2020)

- Remaining Work
- Actual Work
- Critical Remaining Work
- Milestone
- Actual Milestone
- Critical Milestone

Activity ID	Activity Name	Original Duration	At Completion Duration	Duration % Complete	Activity % Complete	Remaining Duration	Primary Constraint	Start	Finish	Current Start	Current Finish	Late Start	Late Finish	Total Float	M36 Remarks	2020				2021			
																Nov	Dec	Jan	Feb	Nov	Dec	Jan	Feb
																36	37	38	39	36	37	38	39
06-1440	Material & Equipment Procurement	350	350	0%	0%	350	As Late As Possible	06-May-22	20-Apr-23	06-May-22	20-Apr-23	25-Mar-22	09-Mar-23	-42									
06-1450	Factory Acceptance Test (FAT)	90	90	0%	0%	90	As Late As Possible	21-Apr-23	19-Jul-23	21-Apr-23	19-Jul-23	10-Mar-23	07-Jun-23	-42									
06-1460	Delivery to Site	60	60	0%	0%	60	As Late As Possible	20-Jul-23	17-Sep-23	20-Jul-23	17-Sep-23	08-Jun-23	06-Aug-23	-42									
<b>EP_SP_66_12-WP5A-M35-4.06.12 Procurement for Ventilation and Odor Treatment</b>		<b>600</b>	<b>600</b>	<b>0%</b>	<b>0%</b>	<b>600</b>		<b>27-Aug-21</b>	<b>18-Apr-23</b>	<b>27-Aug-21</b>	<b>18-Apr-23</b>	<b>19-Aug-21</b>	<b>10-Apr-23</b>	<b>-8</b>									
06-1470(1)	Material Submission and Approval	120	120	0%	0%	120		27-Aug-21	24-Dec-21	27-Aug-21	24-Dec-21	19-Aug-21	16-Dec-21	-8									
06-1480	Material & Equipment Procurement	450	450	0%	0%	450		27-Aug-21	19-Nov-22	27-Aug-21	19-Nov-22	19-Aug-21	11-Nov-22	-8									
06-1490	Factory Acceptance Test (FAT)	90	90	0%	0%	90		20-Nov-22	17-Feb-23	20-Nov-22	17-Feb-23	12-Nov-22	09-Feb-23	-8									
06-1500	Delivery to Site	60	60	0%	0%	60		18-Feb-23	18-Apr-23	18-Feb-23	18-Apr-23	10-Feb-23	10-Apr-23	-8									
<b>EP_SP_66_12-WP5A-M35-4.06.13 Procurement for Fire Services System</b>		<b>660</b>	<b>660</b>	<b>0%</b>	<b>0%</b>	<b>660</b>		<b>09-Sep-21</b>	<b>30-Jun-23</b>	<b>09-Sep-21</b>	<b>30-Jun-23</b>	<b>02-Aug-21</b>	<b>23-May-23</b>	<b>-38</b>									
06-1510	Material Submission and Approval	120	120	0%	0%	120		09-Sep-21	06-Jan-22	09-Sep-21	06-Jan-22	02-Aug-21	29-Nov-21	-38									
06-1520	Material & Equipment Procurement	390	390	0%	0%	390		07-Jan-22	31-Jan-23	07-Jan-22	31-Jan-23	30-Nov-21	24-Dec-22	-38									
06-1530	Factory Acceptance Test (FAT)	90	90	0%	0%	90		01-Feb-23	01-May-23	01-Feb-23	01-May-23	25-Dec-22	24-Mar-23	-38									
06-1540	Delivery to Site	60	60	0%	0%	60		02-May-23	30-Jun-23	02-May-23	30-Jun-23	25-Mar-23	23-May-23	-38									
<b>EP_SP_66_12-WP5A-M35-4.06.14 Procurement for Plumbing System</b>		<b>600</b>	<b>600</b>	<b>0%</b>	<b>0%</b>	<b>600</b>		<b>10-Nov-21</b>	<b>02-Jul-23</b>	<b>10-Nov-21</b>	<b>02-Jul-23</b>	<b>07-Nov-21</b>	<b>29-Jun-23</b>	<b>-3</b>									
06-1550	Material Submission and Approval	120	120	0%	0%	120		10-Nov-21	09-Mar-22	10-Nov-21	09-Mar-22	07-Nov-21	06-Mar-22	-3									
06-1560	Material & Equipment Procurement	450	450	0%	0%	450		10-Nov-21	02-Feb-23	10-Nov-21	02-Feb-23	07-Nov-21	30-Jan-23	-3									
06-1570	Factory Acceptance Test (FAT)	90	90	0%	0%	90		03-Feb-23	03-May-23	03-Feb-23	03-May-23	31-Jan-23	30-Apr-23	-3									
06-1580	Delivery to Site	60	60	0%	0%	60		04-May-23	02-Jul-23	04-May-23	02-Jul-23	01-May-23	29-Jun-23	-3									
<b>EP_SP_66_12-WP5A-M35-4.06.15 Procurement for Drainage System</b>		<b>600</b>	<b>600</b>	<b>0%</b>	<b>0%</b>	<b>600</b>		<b>27-Aug-21</b>	<b>18-Apr-23</b>	<b>27-Aug-21</b>	<b>18-Apr-23</b>	<b>01-Sep-21</b>	<b>23-Apr-23</b>	<b>5</b>									
06-1590	Material Submission and Approval	120	120	0%	0%	120		27-Aug-21	24-Dec-21	27-Aug-21	24-Dec-21	01-Sep-21	29-Dec-21	5									
06-1600	Material & Equipment Procurement	450	450	0%	0%	450		27-Aug-21	19-Nov-22	27-Aug-21	19-Nov-22	01-Sep-21	24-Nov-22	5									
06-1610	Factory Acceptance Test (FAT)	90	90	0%	0%	90		20-Nov-22	17-Feb-23	20-Nov-22	17-Feb-23	25-Nov-22	22-Feb-23	5									
06-1620	Delivery to Site	60	60	0%	0%	60		18-Feb-23	18-Apr-23	18-Feb-23	18-Apr-23	23-Feb-23	23-Apr-23	5									
<b>EP_SP_66_12-WP5A-M35-4.06.16 Procurement for Lighting System</b>		<b>694</b>	<b>694</b>	<b>0%</b>	<b>0%</b>	<b>694</b>		<b>27-Aug-21</b>	<b>21-Jul-23</b>	<b>27-Aug-21</b>	<b>21-Jul-23</b>	<b>29-Jun-21</b>	<b>23-May-23</b>	<b>-59</b>									
06-1630	Material Submission and Approval	120	120	0%	0%	120		27-Aug-21	24-Dec-21	27-Aug-21	24-Dec-21	29-Jun-21	26-Oct-21	-59									
06-1640	Material & Equipment Procurement	424	424	0%	0%	424		25-Dec-21	21-Feb-23	25-Dec-21	21-Feb-23	27-Oct-21	24-Dec-22	-59									
06-1650	Factory Acceptance Test (FAT)	90	90	0%	0%	90		22-Feb-23	22-May-23	22-Feb-23	22-May-23	25-Dec-22	24-Mar-23	-59									
06-1660	Delivery to Site	60	60	0%	0%	60		23-May-23	21-Jul-23	23-May-23	21-Jul-23	25-Mar-23	23-May-23	-59									
<b>EP_SP_66_12-WP5A-M35-4.06.17 Procurement for Security, Surveillance &amp; Commu</b>		<b>520</b>	<b>520</b>	<b>0%</b>	<b>0%</b>	<b>520</b>		<b>03-Jan-22</b>	<b>06-Jun-23</b>	<b>03-Jan-22</b>	<b>06-Jun-23</b>	<b>20-Dec-21</b>	<b>23-May-23</b>	<b>-14</b>									
06-1670	Material Submission and Approval	120	120	0%	0%	120		03-Jan-22	02-May-22	03-Jan-22	02-May-22	20-Dec-21	18-Apr-22	-14									
06-1680	Material & Equipment Procurement	250	250	0%	0%	250		03-May-22	07-Jan-23	03-May-22	07-Jan-23	19-Apr-22	24-Dec-22	-14									
06-1690	Factory Acceptance Test (FAT)	90	90	0%	0%	90		08-Jan-23	07-Apr-23	08-Jan-23	07-Apr-23	25-Dec-22	24-Mar-23	-14									
06-1700	Delivery to Site	60	60	0%	0%	60		08-Apr-23	06-Jun-23	08-Apr-23	06-Jun-23	25-Mar-23	23-May-23	-14									
<b>EP_SP_66_12-WP5A-M35-4.06.18 Procurement for Cranage Equipment</b>		<b>870</b>	<b>870</b>	<b>0%</b>	<b>0%</b>	<b>870</b>		<b>15-Mar-21</b>	<b>01-Aug-23</b>	<b>15-Mar-21</b>	<b>01-Aug-23</b>	<b>03-Apr-21</b>	<b>20-Aug-23</b>	<b>19</b>									
06-1710	Material Submission and Approval	120	120	0%	0%	120		15-Mar-21	12-Jul-21	15-Mar-21	12-Jul-21	03-Apr-21	31-Jul-21	19									
06-1720	Material & Equipment Procurement	600	600	0%	0%	600		13-Jul-21	04-Mar-23	13-Jul-21	04-Mar-23	01-Aug-21	23-Mar-23	19									
06-1730	Factory Acceptance Test (FAT)	90	90	0%	0%	90		05-Mar-23	02-Jun-23	05-Mar-23	02-Jun-23	24-Mar-23	21-Jun-23	19									
06-1740	Delivery to Site	60	60	0%	0%	60		03-Jun-23	01-Aug-23	03-Jun-23	01-Aug-23	22-Jun-23	20-Aug-23	19									
<b>EP_SP_66_12-WP5A-M35-4.06.19 Procurement for Lift and Escalator Systems</b>		<b>600</b>	<b>600</b>	<b>0%</b>	<b>0%</b>	<b>600</b>		<b>29-May-22</b>	<b>18-Jan-24</b>	<b>29-May-22</b>	<b>18-Jan-24</b>	<b>11-Jun-22</b>	<b>31-Jan-24</b>	<b>13</b>									
06-1750	Material Submission and Approval	120	120	0%	0%	120		29-May-22	25-Sep-22	29-May-22	25-Sep-22	11-Jun-22	08-Oct-22	13									
06-1760	Material Procurement & Fabrication	450	450	0%	0%	450		29-May-22	21-Aug-23	29-May-22	21-Aug-23	11-Jun-22	03-Sep-23	13									
06-1770	Factory Acceptance Test (FAT)	90	90	0%	0%	90		22-Aug-23	19-Nov-23	22-Aug-23	19-Nov-23	04-Sep-23	02-Dec-23	13									

### 3-Month Rolling Programme (November 2020)

- Remaining Work
- Actual Work
- Critical Remaining Work
- Milestone
- Actual Milestone
- Critical Milestone

Integrated Waste Management Facilities, Phase 1

Activity ID	Activity Name	Original Duration	At Completion Duration	Duration % Complete	Activity % Complete	Remaining Duration	Primary Constraint	Start	Finish	Current Start	Current Finish	Late Start	Late Finish	Total Float	M36 Remarks	2020				2021				
																Nov	Dec	Jan	Feb	Nov	Dec	Jan	Feb	
06-1780	Delivery to Site	60	60	0%	0%	60		20-Nov-23	18-Jan-24	20-Nov-23	18-Jan-24	03-Dec-23	31-Jan-24	13										
<b>EP_SP_66_12-WP5A-M35-4.06.20 Procurement for Soft Landscape Materials</b>		510	510	0%		510		21-Sep-22	12-Feb-24	21-Sep-22	12-Feb-24	26-Jun-23	16-Nov-24	278										
06-1790	Material Submission and Approval	120	120	0%	0%	120		21-Sep-22	18-Jan-23	21-Sep-22	18-Jan-23	26-Jun-23	23-Oct-23	278										
06-1800	Material Procurement & Nursery	360	360	0%	0%	360		19-Jan-23	13-Jan-24	19-Jan-23	13-Jan-24	24-Oct-23	17-Oct-24	278										
06-1810	Delivery to Site	30	30	0%	0%	30		14-Jan-24	12-Feb-24	14-Jan-24	12-Feb-24	18-Oct-24	16-Nov-24	278										
<b>EP_SP_66_12-WP5A-M35-4.06.21 Procurement for Air Quality Monitoring Station Et</b>		300	300	0%		300		27-Jun-21	22-Apr-22	27-Jun-21	22-Apr-22	29-May-21	24-Mar-22	-29										
06-2150(1)	Material Submission and Approval	90	90	0%	0%	90	Start On or After	27-Jun-21*	24-Sep-21	27-Jun-21	24-Sep-21	29-May-21	26-Aug-21	-29										
06-2160(1)	Material Procurement	180	180	0%	0%	180		25-Sep-21	23-Mar-22	25-Sep-21	23-Mar-22	27-Aug-21	22-Feb-22	-29										
06-2200(1)	Delivery to Site	30	30	0%	0%	30		24-Mar-22	22-Apr-22	24-Mar-22	22-Apr-22	23-Feb-22	24-Mar-22	-29										
<b>EP_SP_66_12-WP5A-M35-4.06.22 Procurement for Air Compressor Equipment</b>		620	620	0%		620		15-Mar-21	24-Nov-22	15-Mar-21	24-Nov-22	04-Feb-22	16-Oct-23	326										
06-1870(1)	Material Submission and Approval	90	90	0%	0%	90		15-Mar-21	12-Jun-21	15-Mar-21	12-Jun-21	04-Feb-22	04-May-22	326										
06-1880(1)	Material & Equipment Procurement	380	380	0%	0%	380		13-Jun-21	27-Jun-22	13-Jun-21	27-Jun-22	05-May-22	19-May-23	326										
06-1890(1)	Factory Acceptance Test (FAT)	90	90	0%	0%	90		28-Jun-22	25-Sep-22	28-Jun-22	25-Sep-22	20-May-23	17-Aug-23	326										
06-1900(1)	Delivery to Site	60	60	0%	0%	60		26-Sep-22	24-Nov-22	26-Sep-22	24-Nov-22	18-Aug-23	16-Oct-23	326										
<b>EP_SP_66_12-WP5A-M35-4.06.23 Procurement for Weight Bridge System</b>		720	720	0%		720		15-Mar-21	04-Mar-23	15-Mar-21	04-Mar-23	30-Sep-21	19-Sep-23	199										
06-2210(1)	Material Submission and Approval	120	120	0%	0%	120		15-Mar-21	12-Jul-21	15-Mar-21	12-Jul-21	30-Sep-21	27-Jan-22	199										
06-2220(1)	Material & Equipment Procurement	450	450	0%	0%	450		13-Jul-21	05-Oct-22	13-Jul-21	05-Oct-22	28-Jan-22	22-Apr-23	199										
06-2230(1)	Factory Acceptance Test (FAT)	90	90	0%	0%	90		06-Oct-22	03-Jan-23	06-Oct-22	03-Jan-23	23-Apr-23	21-Jul-23	199										
06-2240(1)	Delivery to Site	60	60	0%	0%	60		04-Jan-23	04-Mar-23	04-Jan-23	04-Mar-23	22-Jul-23	19-Sep-23	199										
<b>EP_SP_66_12-WP5A-M35-4.06.24 Procurement for Pipes and Insulation for on site</b>		640	640	0%		640		15-Mar-21	14-Dec-22	15-Mar-21	14-Dec-22	21-Oct-21	22-Jul-23	220										
06-2250(1)	Material Submission and Approval	180	180	0%	0%	180		15-Mar-21	10-Sep-21	15-Mar-21	10-Sep-21	21-Oct-21	18-Apr-22	220										
06-2260(1)	Material & Equipment Procurement	400	400	0%	0%	400		11-Sep-21	15-Oct-22	11-Sep-21	15-Oct-22	19-Apr-22	23-May-23	220										
06-2270(1)	Delivery to Site	60	60	0%	0%	60		16-Oct-22	14-Dec-22	16-Oct-22	14-Dec-22	24-May-23	22-Jul-23	220										
<b>EP_SP_66_12-WP5A-M35-4.06.25 Procurement for Truck Wash System</b>		780	780	0%		780		10-Nov-21	29-Dec-23	10-Nov-21	29-Dec-23	22-Nov-21	10-Jan-24	12										
06-2290(1)	Material Submission and Approval	180	180	0%	0%	180		10-Nov-21	08-May-22	10-Nov-21	08-May-22	22-Nov-21	20-May-22	12										
06-2300(1)	Material & Equipment Procurement	450	450	0%	0%	450		09-May-22	01-Aug-23	09-May-22	01-Aug-23	21-May-22	13-Aug-23	12										
06-2310(1)	Factory Acceptance Test (FAT)	90	90	0%	0%	90		02-Aug-23	30-Oct-23	02-Aug-23	30-Oct-23	14-Aug-23	11-Nov-23	12										
06-2320(1)	Delivery to Site	60	60	0%	0%	60		31-Oct-23	29-Dec-23	31-Oct-23	29-Dec-23	12-Nov-23	10-Jan-24	12										
<b>EP_SP_66_12-WP5A-M35-4.06.26 Procurement for CCCW Equipment</b>		780	780	0%		780		15-Mar-21	03-May-23	15-Mar-21	03-May-23	28-Aug-21	16-Oct-23	166										
06-2290(1)10	Material Submission and Approval	180	180	0%	0%	180		15-Mar-21	10-Sep-21	15-Mar-21	10-Sep-21	28-Aug-21	23-Feb-22	166										
06-2300(1)10	Material & Equipment Procurement	450	450	0%	0%	450		11-Sep-21	04-Dec-22	11-Sep-21	04-Dec-22	24-Feb-22	19-May-23	166										
06-2310(1)10	Factory Acceptance Test (FAT)	90	90	0%	0%	90		05-Dec-22	04-Mar-23	05-Dec-22	04-Mar-23	20-May-23	17-Aug-23	166										
06-2320(1)10	Delivery to Site	60	60	0%	0%	60		05-Mar-23	03-May-23	05-Mar-23	03-May-23	18-Aug-23	16-Oct-23	166										
<b>EP_SP_66_12-WP5A-M35-4.08 Maritime Works</b>		762	830	78.87%		161		31-Jan-19 A	09-May-21	30-Nov-20	09-May-21	05-Oct-20	06-Jun-27	2219										
<b>EP_SP_66_12-WP5A-M35-4.08.1 Marine Construction</b>		762	830	78.87%		161		31-Jan-19 A	09-May-21	30-Nov-20	09-May-21	05-Oct-20	06-Jun-27	2219										
<b>EP_SP_66_12-WP5A-M35-4.08.1.1 Phase I - Construction of Perimeter Seawalls</b>		762	536	81.87%		138		29-Oct-19 A	17-Apr-21	30-Nov-20	17-Apr-21	05-Oct-20	21-Apr-21	5										
<b>EP_SP_66_12-WP5A-M35-4.08.1.1.1 Seawall and Berth at DCM Area</b>		762	536	81.87%		138		29-Oct-19 A	17-Apr-21	30-Nov-20	17-Apr-21	05-Oct-20	21-Apr-21	5										
<b>EP_SP_66_12-WP5A-M35-4.08.1.1.1.5 Seawall Structural Works</b>		762	536	81.87%		138		29-Oct-19 A	17-Apr-21	30-Nov-20	17-Apr-21	05-Oct-20	21-Apr-21	5										
08-1100	Rubble Mound Laying (100,000m3 approx, @550m3/d)	182	168	93.41%	93.41%	12		27-Jun-20 A	11-Dec-20	30-Nov-20	11-Dec-20	10-Apr-21	21-Apr-21	131										
08-1105(6) (M22)	Prefabrication for Caisson (No.35 to No.46) Including Marine Access	337	445	59%	59%	138		28-Jan-20 A	17-Apr-21	30-Nov-20	17-Apr-21	05-Oct-20	20-Feb-21	-55										
08-1115(3)	Caisson infill, Solid ballast, toe protection, precast concrete blocks ..etc Laying	250	481	66.8%	51%	83		29-Oct-19 A	20-Feb-21	30-Nov-20	20-Feb-21	30-Nov-20	20-Feb-21	0										
<b>EP_SP_66_12-WP5A-M35-4.08.1.1.2 Seawall at Dredging Area</b>		60	334	73.33%		16		17-Jan-20 A	15-Dec-20	30-Nov-20	15-Dec-20	03-Nov-20	18-Nov-20	-27										
08-1160	Lay Concrete Block Walls (300m length approx. @4m/d)	60	334	73.33%	73.33%	16		17-Jan-20 A	15-Dec-20	30-Nov-20	15-Dec-20	03-Nov-20	18-Nov-20	-27										
<b>EP_SP_66_12-WP5A-M35-4.08.1.2 Phase II - Reclamation, Breakwater and Berth Construction</b>		618	830	73.96%		161		31-Jan-19 A	09-May-21	30-Nov-20	09-May-21	20-Oct-20	06-Jun-27	2219										
<b>EP_SP_66_12-WP5A-M35-4.08.1.2.1 Reclamation</b>		168	236	4.17%		161		16-Sep-20 A	09-May-21	30-Nov-20	09-May-21	20-Oct-20	06-Jun-27	2219										
08-1200	Reclamation fill for Northern Side (from A2) from -9.0m PD to +2.5mPD (450,008m3 @ 4000m3/d)	113	93	84%	84%	18		16-Sep-20 A	18-Dec-20	30-Nov-20	18-Dec-20	19-May-27	06-Jun-27	2362										

3-Month Rolling Programme (November 2020)

Remaining Work    
  Actual Work    
  Critical Remaining Work    
  Milestone    
  Actual Milestone    
  Critical Milestone

