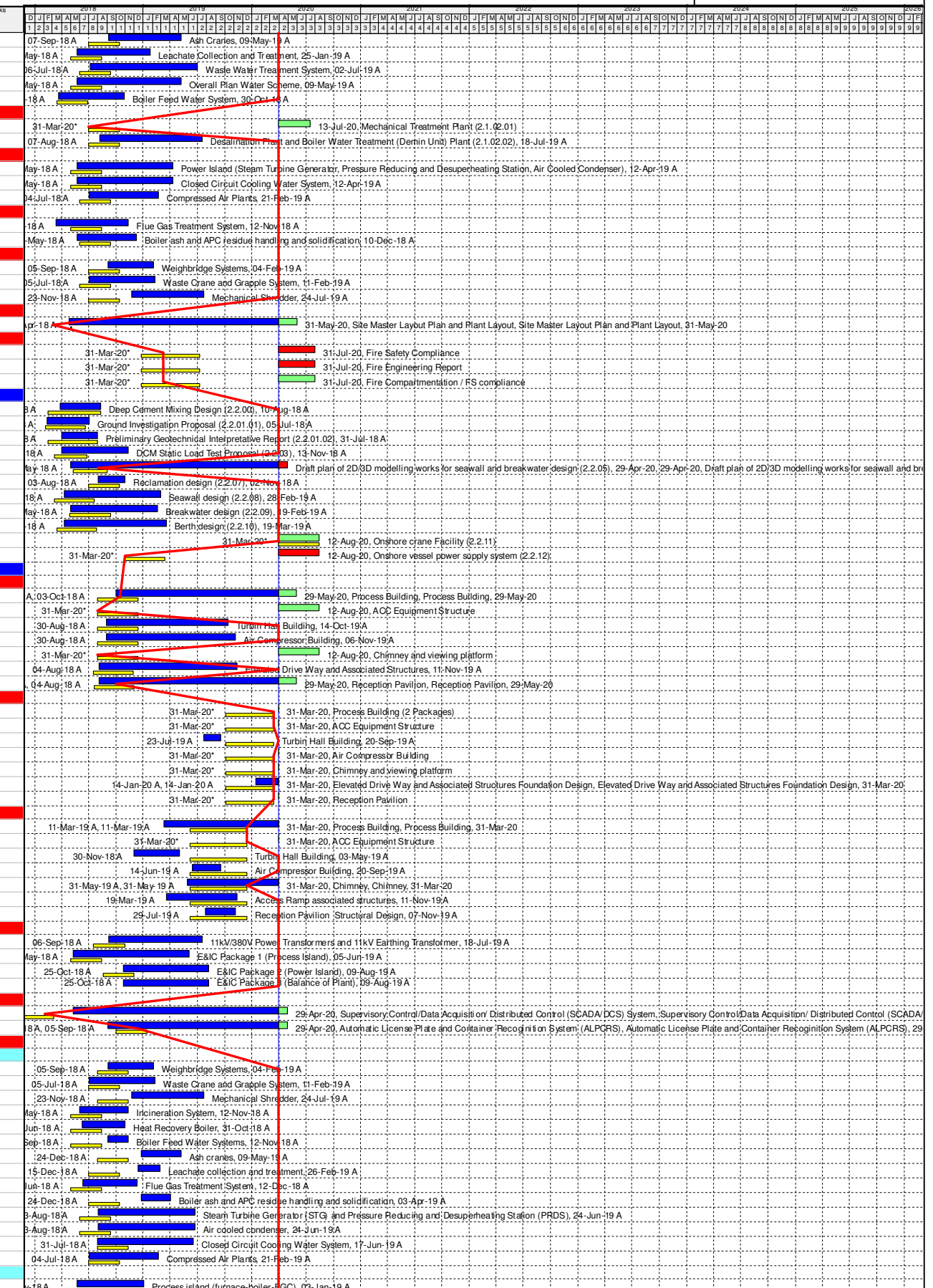


Appendix A Master Programme

| Activity ID | Activity Name | Primary Constraint | At Completion Duration | Current Start | Current Finish | Actual Start | Actual Finish | Latest Start | Latest Finish | Total Float | Activity % Complete | M28 Remarks |
|-----------------------------------|---|--------------------|------------------------|---------------|----------------|--------------|---------------|--------------|---------------|-------------|---------------------|-------------|
| 05-1020 | Ash Cranes | Start On or After | 244 | | | 07-Sep-18 A | 09-May-19 A | | | | 100% | |
| 05-1030 | Leachate Collection and Treatment | Start On or After | 245 | | | 25-May-18 A | 25-Jan-19 A | | | | 100% | |
| 05-1040 | Waste Water Treatment System | Start On or After | 361 | | | 06-Jul-18 A | 02-Jul-19 A | | | | 100% | |
| 05-1050 | Overall Plan Water Scheme | Start On or After | 350 | | | 24-May-18 A | 09-May-19 A | | | | 100% | |
| 05-1060 | Boiler Feed Water System | Start On or After | 223 | | | 21-Mar-18 A | 30-Oct-18 A | | | | 100% | |
| EP_SP_66_12-WP-3-M28.05.01.01.2 | MSW treatment process design for mechanical treatment (2.1.02) | | 707 | 31-Mar-20 | 13-Jul-20 | 07-Aug-18 A | 13-Jul-20 | 02-May-20 | 15-Aug-20 | 32 | | |
| 05-1090 | Mechanical Treatment Plant (2.1.02.01) | Start On or After | 105 | 31-Mar-20 | 13-Jul-20 | 31-Mar-20* | 13-Jul-20 | 02-May-20 | 15-Aug-20 | 32 | 0% | |
| 05-1100 | Desalination Plant and Boiler Water Treatment (Demin Unit) Plant (2.1.02.02) | Start On or After | 345 | | | 07-Aug-18 A | 18-Jul-19 A | | | | 100% | |
| EP_SP_66_12-WP-3-M28.05.01.01.3 | Waste heat recovery and Power generation system (2.1.03) | | 323 | | | 24-May-18 A | 12-Apr-19 A | | | | | |
| 05-1110 | Power Island (Steam Turbine Generator, Pressure Reducing and Desuperheating Station, Air Cooled Cond) | Start On or After | 323 | | | 24-May-18 A | 12-Apr-19 A | | | | 100% | |
| 05-1120 | Closed Circuit Cooling Water System | Start On or After | 323 | | | 24-May-18 A | 12-Apr-19 A | | | | 100% | |
| 05-1130 | Compressed Air Plants | Start On or After | 232 | | | 04-Jul-18 A | 21-Feb-19 A | | | | 100% | |
| EP_SP_66_12-WP-3-M28.05.01.01.4 | Flue gas treatment process design for incineration (2.1.04) | | 270 | | | 15-Mar-18 A | 10-Dec-18 A | | | | | |
| 05-1070 | Flue Gas Treatment System | Start On or After | 242 | | | 15-Mar-18 A | 12-Nov-18 A | | | | 100% | |
| 05-1080 | Boiler ash and APC residue handling and solidification | Start On or After | 199 | | | 25-May-18 A | 10-Dec-18 A | | | | 100% | |
| EP_SP_66_12-WP-3-M28.05.01.01.5 | Logistic arrangement design for MSW and Ash and Residues (2.1.05) | | 384 | | | 05-Jul-18 A | 24-Jul-19 A | | | | | |
| 05-1140 | Weighbridge Systems | Start On or After | 152 | | | 05-Sep-18 A | 04-Feb-19 A | | | | 100% | |
| 05-1150 | Waste Crane and Grapple System | Start On or After | 221 | | | 05-Jul-18 A | 11-Feb-19 A | | | | 100% | |
| 05-1160 | Mechanical Shredder | Start On or After | 243 | | | 23-Nov-18 A | 24-Jul-19 A | | | | 100% | |
| EP_SP_66_12-WP-3-M28.05.01.01.6 | Site Master Layout Plan and Plant Layout (2.1.06) | | 766 | 31-Mar-20 | 31-May-20 | 27-Apr-18 A | 31-May-20 | 31-Dec-20 | 03-Mar-21 | 275 | | |
| 05-3020 | Site Master Layout Plan and Plant Layout | | 766 | 31-Mar-20 | 31-May-20 | 27-Apr-18 A | 31-May-20 | 31-Dec-20 | 03-Mar-21 | 275 | 65% | |
| EP_SP_66_12-WP-3-M28.05.01.01.7 | Statutory Fire Compliance (2.1.25) | | 123 | 31-Mar-20 | 31-Jul-20 | 31-Mar-20* | 31-Jul-20 | 10-Apr-19 | 26-Feb-21 | 209 | | |
| 05-2990 | Fire Safety Compliance | Start On or After | 123 | 31-Mar-20 | 31-Jul-20 | 31-Mar-20* | 31-Jul-20 | 10-Apr-19 | 10-Aug-19 | -356 | 0% | |
| 05-3000 | Fire Engineering Report | Start On or After | 123 | 31-Mar-20 | 31-Jul-20 | 31-Mar-20* | 31-Jul-20 | 10-Apr-19 | 10-Aug-19 | -356 | 0% | |
| 05-3010 | Fire Compartmentation / FS compliance | Start On or After | 123 | 31-Mar-20 | 31-Jul-20 | 31-Mar-20* | 31-Jul-20 | 26-Oct-20 | 26-Feb-21 | 209 | 0% | |
| EP_SP_66_12-WP-3-M28.05.01.02 | AIP Ground Treatment, Reclamation, Seawall, Breakwater, Berth (2.2) | | 913 | 31-Mar-20 | 12-Aug-20 | 12-Feb-18 A | 12-Aug-20 | 26-Nov-19 | 20-Jul-21 | 341 | | |
| 05-1170 | Deep Cement Mixing Design (2.2.00) | Start On or After | 136 | | | 27-Mar-18 A | 10-Aug-18 A | | | | 100% | |
| 05-1180 | Ground Investigation Proposal (2.2.01.01) | Start On or After | 143 | | | 12-Feb-18 A | 05-Jul-18 A | | | | 100% | |
| 05-1190 | Preliminary Geotechnical Interpretative Report (2.2.01.02) | Start On or After | 120 | | | 03-Apr-18 A | 31-Jul-18 A | | | | 100% | |
| 05-1200 | DCM Static Load Test Proposal (2.2.03) | Start On or After | 224 | | | 03-Apr-18 A | 13-Nov-18 A | | | | 100% | |
| 05-1280 | Draft plan of 2D/3D modelling works for seawall and breakwater design (2.2.05) | Start On or After | 728 | 31-Mar-20 | 29-Apr-20 | 03-May-18 A | 29-Apr-20 | 26-Nov-19 | 26-Dec-19 | -126 | 80% | |
| 05-2930 | Reclamation design (2.2.07) | Start On or After | 91 | | | 03-Aug-18 A | 02-Nov-18 A | | | | 100% | |
| 05-2940 | Seawall design (2.2.08) | Start On or After | 323 | | | 11-Apr-18 A | 28-Feb-19 A | | | | 100% | |
| 05-2950 | Breakwater design (2.2.09) | Start On or After | 293 | | | 02-May-18 A | 19-Feb-19 A | | | | 100% | |
| 05-2960 | Berth design (2.2.10) | Start On or After | 342 | | | 11-Apr-18 A | 19-Mar-19 A | | | | 70% | |
| 05-2970 | Onshore crane Facility (2.2.11) | Start On or After | 135 | 31-Mar-20 | 12-Aug-20 | 31-Mar-20* | 12-Aug-20 | 07-Mar-21 | 20-Jul-21 | 341 | 0% | |
| 05-2980 | Onshore vessel power supply system (2.2.12) | Start On or After | 135 | 31-Mar-20 | 12-Aug-20 | 31-Mar-20* | 12-Aug-20 | 15-Dec-19 | 28-Apr-20 | -107 | 0% | |
| EP_SP_66_12-WP-3-M28.05.01.03 | AIP Incineration Plant Buildings (2.3) | | 961 | 31-Mar-20 | 25-Dec-20 | 10-May-18 A | 25-Dec-20 | 30-Aug-18 | 26-Jul-22 | 577 | | |
| EP_SP_66_12-WP-3-M28.05.01.03.1 | Architectural Design (2.3.00) | | 740 | 31-Mar-20 | 12-Aug-20 | 04-Aug-18 A | 12-Aug-20 | 15-Dec-20 | 12-Aug-21 | 364 | | |
| 05-1210 | Process Building | Start On or After | 605 | 31-Mar-20 | 29-May-20 | 03-Oct-18 A | 29-May-20 | 15-Dec-20 | 13-Feb-21 | 259 | 65% | |
| 05-1220 | ACC Equipment Structure | Start On or After | 135 | 31-Mar-20 | 12-Aug-20 | 31-Mar-20* | 12-Aug-20 | 16-Feb-21 | 01-Jul-21 | 322 | 0% | |
| 05-1230 | Turbin Hall Building | Start On or After | 410 | | | 30-Aug-18 A | 14-Oct-19 A | | | | 100% | |
| 05-1240 | Air Compressor Building | Start On or After | 433 | | | 30-Aug-18 A | 06-Nov-19 A | | | | 100% | |
| 05-1250 | Chimney and viewing platform | Start On or After | 135 | 31-Mar-20 | 12-Aug-20 | 31-Mar-20* | 12-Aug-20 | 28-Jan-21 | 12-Jun-21 | 303 | 0% | |
| 05-1260 | Elevated Drive Way and Associated Structures | Start On or After | 464 | | | 04-Aug-18 A | 11-Nov-19 A | | | | 100% | |
| 05-1270 | Reception Pavilion | Start On or After | 665 | 31-Mar-20 | 29-May-20 | 04-Aug-18 A | 29-May-20 | 13-Jun-21 | 12-Aug-21 | 439 | 65% | |
| EP_SP_66_12-WP-3-M28.05.01.03.2 | Foundation design (2.3.01) | | 252 | 31-Mar-20 | 31-Mar-20 | 23-Jul-19 A | 31-Mar-20 | 02-Jul-21 | 19-Jun-22 | 810 | | |
| 05-3030 | Process Building (2 Packages) | Start On or After | 0 | 31-Mar-20 | 31-Mar-20 | 31-Mar-20* | 31-Mar-20 | 02-Jul-21 | 02-Jul-21 | 458 | 0% | |
| 05-3040 | ACC Equipment Structure | Start On or After | 0 | 31-Mar-20 | 31-Mar-20 | 31-Mar-20* | 31-Mar-20 | 18-Oct-21 | 18-Oct-21 | 566 | 0% | |
| 05-3050 | Turbin Hall Building | Start On or After | 59 | | | 23-Jul-19 A | 20-Sep-19 A | | | | 100% | |
| 05-3060 | Air Compressor Building | Start On or After | 0 | 31-Mar-20 | 31-Mar-20 | 31-Mar-20* | 31-Mar-20 | 27-Jan-22 | 27-Jan-22 | 667 | 0% | |
| 05-3070 | Chimney and viewing platform | Start On or After | 0 | 31-Mar-20 | 31-Mar-20 | 31-Mar-20* | 31-Mar-20 | 29-Sep-21 | 29-Sep-21 | 547 | 0% | |
| 05-3080 | Elevated Drive Way and Associated Structures Foundation Design | Start On or After | 77 | 31-Mar-20 | 31-Mar-20 | 14-Jan-20 A | 31-Mar-20 | 06-Feb-22 | 06-Feb-22 | 677 | 45% | |
| 05-3090 | Reception Pavilion | Start On or After | 0 | 31-Mar-20 | 31-Mar-20 | 31-Mar-20* | 31-Mar-20 | 19-Jun-22 | 19-Jun-22 | 810 | 0% | |
| EP_SP_66_12-WP-3-M28.05.01.03.3 | Structural design (2.3.02) | | 487 | 31-Mar-20 | 31-Mar-20 | 30-Nov-18 A | 31-Mar-20 | 14-Nov-20 | 26-Jul-22 | 847 | | |
| 05-1290 | Process Building | Start On or After | 386 | 31-Mar-20 | 31-Mar-20 | 11-Mar-19 A | 31-Mar-20 | 20-Sep-21 | 20-Sep-21 | 538 | 5% | |
| 05-1300 | ACC Equipment Structure | Start On or After | 0 | 31-Mar-20 | 31-Mar-20 | 31-Mar-20* | 31-Mar-20 | 14-Nov-20 | 14-Nov-20 | 228 | 0% | |
| 05-1310 | Turbin Hall Building | Start On or After | 154 | | | 30-Nov-18 A | 03-May-19 A | | | | 100% | |
| 05-1320 | Air Compressor Building | Start On or After | 98 | | | 14-Jun-19 A | 20-Sep-19 A | | | | 100% | |
| 05-1330 | Chimney | Start On or After | 305 | 31-Mar-20 | 31-Mar-20 | 31-May-19 A | 31-Mar-20 | 26-Jul-22 | 26-Jul-22 | 847 | 5% | |
| 05-1340 | Access Ramp associated structures | Start On or After | 237 | | | 19-Mar-19 A | 11-Nov-19 A | | | | 100% | |
| 05-1350 | Reception Pavilion Structural Design | Start On or After | 101 | | | 29-Jul-19 A | 07-Nov-19 A | | | | 100% | |
| EP_SP_66_12-WP-3-M28.05.01.03.4 | Electrical and Instrumentation works design (2.3.03) | | 456 | | | 10-May-18 A | 09-Aug-19 A | | | | | |
| 05-3150 | 11kV/380V Power Transformers and 11kV Earthing Transformer | Start On or After | 315 | | | 06-Sep-18 A | 18-Jul-19 A | | | | 100% | |
| 05-3160 | E&I Package 1 (Process Island) | Start On or After | 391 | | | 10-May-18 A | 05-Jun-19 A | | | | 100% | |
| 05-3170 | E&I Package 2 (Power Island) | Start On or After | 288 | | | 25-Oct-18 A | 09-Aug-19 A | | | | 100% | |
| 05-3175(3)(M12) | E&I Package 3 (Balance of Plant) | Start On or After | 288 | | | 25-Oct-18 A | 09-Aug-19 A | | | | 100% | |
| EP_SP_66_12-WP-3-M28.05.01.03.8 | Operation Management System (2.3.03.04) | | 721 | 31-Mar-20 | 29-Apr-20 | 10-May-18 A | 29-Apr-20 | 28-Apr-20 | 10-Sep-20 | 133 | | |
| 05-3180 | Supervisory Control/Data Acquisition/Distributed Control (SCADA/DCS) System | Start On or After | 721 | 31-Mar-20 | 29-Apr-20 | 10-May-18 A | 29-Apr-20 | 28-Apr-20 | 28-May-20 | 28 | 65% | |
| 05-3210 | Automatic License Plate and Container Recognition System (ALPCRS) | Start On or After | 603 | 31-Mar-20 | 29-Apr-20 | 05-Sep-18 A | 29-Apr-20 | 11-Aug-20 | 10-Sep-20 | 133 | 65% | |
| EP_SP_66_12-WP-3-M28.05.01.03.5 | Mechanical works design (2.3.04) | | 433 | | | 17-May-18 A | 24-Jul-19 A | | | | | |
| EP_SP_66_12-WP-3-M28.05.01.03.5.1 | Plant and Equipment | | 419 | | | 31-May-18 A | 24-Jul-19 A | | | | | |
| 05-2800 | Weighbridge Systems | Start On or After | 152 | | | 05-Sep-18 A | 04-Feb-19 A | | | | 100% | |
| 05-2810 | Waste Crane and Grapple System | Start On or After | 221 | | | 05-Jul-18 A | 11-Feb-19 A | | | | 100% | |
| 05-2820 | Mechanical Shredder | Start On or After | 243 | | | 23-Nov-18 A | 24-Jul-19 A | | | | 100% | |
| 05-2830 | Incineration System | Start On or After | 165 | | | 31-May-18 A | 12-Nov-18 A | | | | 100% | |
| 05-2840 | Heat Recovery Boiler | Start On or After | 145 | | | 08-Jun-18 A | 31-Oct-18 A | | | | 100% | |
| 05-2850 | Boiler Feed Water Systems | Start On or After | 68 | | | 05-Sep-18 A | 12-Nov-18 A | | | | 100% | |
| 05-2860 | Ash cranes | Start On or After | 136 | | | 24-Dec-18 A | 09-May-19 A | | | | 100% | |
| 05-2870 | Leachate collection and treatment | Start On or After | 73 | | | 15-Dec-18 A | 26-Feb-19 A | | | | 100% | |
| 05-2880 | Flue Gas Treatment System | Start On or After | 184 | | | 11-Jun-18 A | 12-Dec-18 A | | | | 100% | |
| 05-2890 | Boiler ash and APC residue handling and solidification | Start On or After | 100 | | | 24-Dec-18 A | 03-Apr-19 A | | | | 100% | |
| 05-2900 | Steam Turbine Generator (STG) and Pressure Reducing and Desuperheating Station (PRDS) | Start On or After | 325 | | | 03-Aug-18 A | 24-Jun-19 A | | | | 100% | |
| 05-2910 | Air cooled condenser | Start On or After | 325 | | | 03-Aug-18 A | 24-Jun-19 A | | | | 100% | |
| 05-2915(3) | Closed Circuit Cooling Water System | Start On or After | 321 | | | 31-Jul-18 A | 17-Jun-19 A | | | | 100% | |
| 05-2920 | Compressed Air Plants | Start On or After | 232 | | | 04-Jul-18 A | 21-Feb-19 A | | | | 100% | |
| EP_SP_66_12-WP-3-M28.05.01.03.5.2 | Process Pipeworks (Incl. Ductworks) and Valves | | 404 | | | 24-May-18 A | 02-Jul-19 A | | | | | |
| 05-1360 | Process Island (furnace-boiler-FGC) | Start On or After | 224 | | | 24-May-18 A | 03-Jan-19 A | | | | 100% | |



Programme for Design and Construction Works
 March 2020 Update (Rev WP-3-M28)

| | | | | | | | | | |
|------------------|-----------------------|----------------|-------------|-------------------------|--------------------|---------------------------|-----------|------------------|--------------------|
| Primary Baseline | WP3 BL Critical Works | Remaining Work | Actual Work | Critical Remaining Work | Baseline Milestone | WP3 BL Critical Milestone | Milestone | Actual Milestone | Critical Milestone |
|------------------|-----------------------|----------------|-------------|-------------------------|--------------------|---------------------------|-----------|------------------|--------------------|

| Date | Revision | Checked | Approved |
|------|----------|---------|----------|
|------|----------|---------|----------|

| Activity ID | Activity Name | Primary Constraint | At Completion Duration | Current Start | Current Finish | Actual Start | Actual Finish | Latest Start | Latest Finish | Total Float | Activity % Complete | M28 Remarks |
|---|---|---------------------|------------------------|---------------|----------------|--------------|---------------|--------------|---------------|-------------|---------------------|-------------|
| 05-1370 | Pipebridge (Between Process Island & Turbine Hall) | Start On or After | 404 | | | 24-May-18 A | 02-Jul-19 A | | | | 100% | |
| 05-1380 | Compressed Air Plant area | Start On or After | 273 | | | 02-Oct-18 A | 02-Jul-19 A | | | | 100% | |
| 05-1390 | Pipebridge (Between CCGW Area & Turbine Hall) | Start On or After | 119 | | | 02-Oct-18 A | 29-Jan-19 A | | | | 100% | |
| 05-1400 | Pipebridge (Between Turbine Hall & ACC Yard) | Start On or After | 119 | | | 02-Oct-18 A | 29-Jan-19 A | | | | 100% | |
| 05-1410 | Turbine Hall | Start On or After | 273 | | | 02-Oct-18 A | 02-Jul-19 A | | | | 100% | |
| 05-1420 | ACC Yard | Start On or After | 273 | | | 02-Oct-18 A | 02-Jul-19 A | | | | 100% | |
| 05-1540 | CCGW Area | Start On or After | 273 | | | 02-Oct-18 A | 02-Jul-19 A | | | | 100% | |
| EP_SP_66_12-WP-3-M28.05.01.03.5.3 Process steel structure support (For equipment, piping & duct, cable tray etc) | | | | | | | | | | | | |
| 05-3100 | Process island (furnace-boiler-FGC) | Start On or After | 246 | | | 17-May-18 A | 29-Jan-19 A | | | | 100% | |
| 05-3110 | Pipebridge (Between Process Island & Turbine Hall) | Start On or After | 112 | | | 09-Oct-18 A | 29-Jan-19 A | | | | 100% | |
| 05-3120 | Turbine Hall | Start On or After | 112 | | | 09-Oct-18 A | 29-Jan-19 A | | | | 100% | |
| 05-3130 | Pipebridge (Between CCGW Area & Turbine Hall) | Start On or After | 112 | | | 09-Oct-18 A | 29-Jan-19 A | | | | 100% | |
| 05-3140 | Pipebridge (Between Turbine Hall & ACC Yard) | Start On or After | 112 | | | 09-Oct-18 A | 29-Jan-19 A | | | | 100% | |
| EP_SP_66_12-WP-3-M28.05.01.03.5.4 Equipment and piping insulation | | | | | | | | | | | | |
| 05-1430 | Incineration System | Start On or After | 150 | | | 15-Jun-18 A | 12-Nov-18 A | | | | 100% | |
| 05-1440 | Heat Recovery Boiler | Start On or After | 138 | | | 15-Jun-18 A | 31-Oct-18 A | | | | 100% | |
| 05-1450 | Boiler Feed Water Systems | Start On or After | 150 | | | 15-Jun-18 A | 12-Nov-18 A | | | | 100% | |
| 05-1460 | Flue Gas Treatment System | Start On or After | 180 | | | 15-Jun-18 A | 12-Dec-18 A | | | | 100% | |
| 05-1470 | Boiler ash and APC residue handling and solidification | Start On or After | 292 | | | 15-Jun-18 A | 03-Apr-19 A | | | | 100% | |
| 05-1480 | Steam Turbine Generator (STG) and Pressure Reducing and Desuperheating Station (PRDS) | Start On or After | 181 | | | 11-Jan-19 A | 11-Jul-19 A | | | | 100% | |
| 05-1490 | Air cooled condenser | Start On or After | 251 | | | 02-Nov-18 A | 11-Jul-19 A | | | | 100% | |
| 05-1500 | Closed Circuit Cooling Water System | Start On or After | 321 | | | 31-Jul-18 A | 17-Jun-19 A | | | | 100% | |
| EP_SP_66_12-WP-3-M28.05.01.03.6 Fire services installation design (2.3.05) | | | | | | | | | | | | |
| EP_SP_66_12-WP-3-M28.05.01.03.6.1 Process Building (2.3.05.01) | | | | | | | | | | | | |
| 05-1510 | Fire Systems | Finish On or Before | 626 | 31-Mar-20 | 26-Sep-20 | 10-Jan-19 A | 26-Sep-20 | 10-Apr-19 | 07-Oct-19 | -355 | 5% | |
| 05-1520 | Fire engineering | Finish On or Before | 569 | 01-Aug-20 | 01-Aug-20 | 10-Jan-19 A | 01-Aug-20 | 07-Oct-19 | 07-Oct-19 | -298 | 0% | |
| 05-1530 | FS schematics | Finish On or Before | 180 | 31-Mar-20 | 26-Sep-20 | 10-Jan-19 A | 26-Sep-20 | 10-Apr-19 | 06-Oct-19 | -356 | 0% | |
| EP_SP_66_12-WP-3-M28.05.01.03.6.2 Turbin Hall Building (2.3.05.03) | | | | | | | | | | | | |
| 05-5400 | Fire Systems (2.3.05.03.01) | Finish On or Before | 453 | 31-Mar-20 | 06-Apr-20 | 10-Jan-19 A | 06-Apr-20 | 01-Oct-19 | 07-Oct-19 | -182 | 5% | |
| 05-5410 (M22) | Fire engineering | Finish On or Before | 729 | 31-Mar-20 | 25-Dec-20 | 28-Dec-18 A | 25-Dec-20 | 17-Apr-19 | 11-Jan-20 | -349 | 0% | |
| 05-5420 (M22) | FS schematics (2.3.05.03.03) | Finish On or Before | 564 | 31-Mar-20 | 13-Jul-20 | 28-Dec-18 A | 13-Jul-20 | 22-Jun-19 | 04-Oct-19 | -283 | 25% | |
| EP_SP_66_12-WP-3-M28.05.01.03.6.4 Air Compressor Building (2.3.05.04) | | | | | | | | | | | | |
| 05-5430 (M22) | Fire Systems | Finish On or Before | 270 | 31-Mar-20 | 25-Dec-20 | 31-Mar-20 | 25-Dec-20 | 30-Aug-18 | 26-May-19 | -579 | 0% | |
| 05-5440 (M22) | FS schematics | Finish On or Before | 270 | 31-Mar-20 | 25-Dec-20 | 31-Mar-20 | 25-Dec-20 | 30-Aug-18 | 26-May-19 | -579 | 0% | |
| EP_SP_66_12-WP-3-M28.05.01.03.6.5 Elevated Drive Way and Associated Structures (2.3.05.05) | | | | | | | | | | | | |
| 05-5445 (M22) | Fire Systems | Finish On or Before | 255 | 31-Mar-20 | 26-Aug-20 | 16-Dec-19 A | 26-Aug-20 | 29-Oct-19 | 25-Mar-20 | -154 | 5% | |
| 05-5450 (M22) | FS schematics | Finish On or Before | 255 | 31-Mar-20 | 26-Aug-20 | 16-Dec-19 A | 26-Aug-20 | 29-Oct-19 | 25-Mar-20 | -154 | 5% | |
| EP_SP_66_12-WP-3-M28.05.01.03.6.6 Reception Pavilion (2.3.05.06) | | | | | | | | | | | | |
| 05-5460 (M22) | Fire Systems (2.3.05.06.01) | Finish On or Before | 357 | 31-Mar-20 | 24-Sep-20 | 04-Oct-19 A | 24-Sep-20 | 16-Dec-19 | 10-Jun-20 | -106 | 5% | |
| 05-5470 (M22) | FS schematics (2.3.05.06.03) | Finish On or Before | 356 | 31-Mar-20 | 23-Sep-20 | 04-Oct-19 A | 23-Sep-20 | 17-Dec-19 | 10-Jun-20 | -105 | 5% | |
| EP_SP_66_12-WP-3-M28.05.01.03.6.7 Compressor & Closed Circuit (2.3.05.07) | | | | | | | | | | | | |
| 05-5480 (M22) | Fire Systems (2.3.05.07.01) | Finish On or Before | 307 | 31-Mar-20 | 13-Jul-20 | 11-Sep-19 A | 13-Jul-20 | 13-Oct-19 | 25-Jan-20 | -170 | 45% | |
| 05-5490 (M22) | FS schematics (2.3.05.07.03) | Finish On or Before | 307 | 31-Mar-20 | 13-Jul-20 | 11-Sep-19 A | 13-Jul-20 | 13-Oct-19 | 25-Jan-20 | -170 | 45% | |
| EP_SP_66_12-WP-3-M28.05.01.03.7 Building services design (excluding fire services installation design) (2.3.05) | | | | | | | | | | | | |
| 05-1550 | Electrical Services and Lighting (7 Packages) | Start On or After | 764 | 31-Mar-20 | 12-Aug-20 | 11-Jul-18 A | 12-Aug-20 | 19-May-20 | 29-Apr-21 | 259 | 12.5% | |
| 05-1560 | MVAC (6 Packages) | Start On or After | 577 | 31-Mar-20 | 09-Aug-20 | 10-Jan-19 A | 09-Aug-20 | 23-Jul-20 | 02-Dec-20 | 115 | 5% | |
| 05-1570 | Odour Control | Start On or After | 476 | 31-Mar-20 | 29-Apr-20 | 10-Jan-19 A | 29-Apr-20 | 12-Oct-20 | 11-Nov-20 | 195 | 5% | |
| 05-1580 | Plumbing (7 Packages) | Start On or After | 719 | 31-Mar-20 | 28-Jun-20 | 11-Jul-18 A | 28-Jun-20 | 13-Aug-20 | 11-Nov-20 | 135 | 5% | |
| 05-1590 | Drainage (7 Packages) | Start On or After | 441 | 31-Mar-20 | 31-Mar-20 | 15-Jan-19 A | 31-Mar-20 | 16-Nov-20 | 16-Nov-20 | 230 | 5% | |
| 05-1600 | ELV (7 Packages) | Start On or After | 531 | 31-Mar-20 | 28-Jun-20 | 15-Jan-19 A | 28-Jun-20 | 18-Aug-20 | 16-Nov-20 | 140 | 5% | |
| 05-1610 | Lifts and Escalators (2 Packages) | Start On or After | 536 | 31-Mar-20 | 28-Jun-20 | 10-Jan-19 A | 28-Jun-20 | 17-Nov-20 | 15-Feb-21 | 231 | 5% | |
| 05-1630 | Building Management System (BMS) (7 Packages) | Start On or After | 227 | 31-Mar-20 | 12-Aug-20 | 30-Dec-19 A | 12-Aug-20 | 04-Jun-20 | 17-Oct-20 | 65 | 5% | |
| 05-1770 | Vehicle & Container Wash System | Start On or After | 135 | 31-Mar-20 | 12-Aug-20 | 31-Mar-20 | 12-Aug-20 | 19-May-20 | 30-Sep-20 | 49 | 0% | |
| 05-1770-1(M20) | Water Cannon System | Start On or After | 135 | 31-Mar-20 | 12-Aug-20 | 31-Mar-20 | 12-Aug-20 | 01-Oct-20 | 13-Feb-21 | 184 | 0% | |
| 05-1770-1(M20) | Water Cannon System | Start On or After | 294 | 31-Mar-20 | 31-Mar-20 | 11-Jun-19 A | 31-Mar-20 | 29-Apr-21 | 29-Apr-21 | 394 | 5% | |
| EP_SP_66_12-WP-3-M28.05.01.04 AIP Mechanical Treatment Plant Building (2.4) | | | | | | | | | | | | |
| 05-1640 | Architectural Design (2.4.00) | Start On or After | 706 | 31-Mar-20 | 12-Aug-20 | 07-Sep-18 A | 12-Aug-20 | 19-Nov-19 | 25-Oct-21 | 438 | 65% | |
| 05-1650 | Foundation design (2.4.01) | Start On or After | 631 | 31-Mar-20 | 29-May-20 | 07-Sep-18 A | 29-May-20 | 22-Nov-20 | 21-Jan-21 | 236 | 65% | |
| 05-1660 | Structural design (2.4.02) | Start On or After | 268 | 31-Mar-20 | 31-Mar-20 | 07-Jul-19 A | 31-Mar-20 | 25-Oct-21 | 25-Oct-21 | 573 | 65% | |
| 05-1670 | Electrical and instrumentation works design (2.4.03) | Start On or After | 206 | 31-Mar-20 | 13-Jul-20 | 21-May-19 A | 13-Dec-19 A | | | 100% | 100% | |
| 05-1680 | Mechanical works design (2.4.04) | Start On or After | 105 | 31-Mar-20 | 13-Jul-20 | 31-Mar-20 | 13-Jul-20 | 14-Jul-20 | 27-Oct-20 | 105 | 0% | |
| 05-1690 | Fire services installation design (2.4.05) (3 Packages) | Start On or After | 105 | 31-Mar-20 | 13-Jul-20 | 31-Mar-20 | 13-Jul-20 | 19-Nov-19 | 03-Mar-20 | -133 | 0% | |
| 05-1690 | Fire services installation design (2.4.05) (3 Packages) | Start On or After | 472 | 31-Mar-20 | 04-Jul-20 | 20-Mar-19 A | 04-Jul-20 | 31-Jan-21 | 06-May-21 | 306 | 9.5% | |
| EP_SP_66_12-WP-3-M28.05.01.04.7 Building services design (excluding fire services installation design) (2.4.06) | | | | | | | | | | | | |
| 05-1700 | Electrical Services and Lighting (2.4.06.01) | Start On or After | 512 | 31-Mar-20 | 12-Aug-20 | 20-Mar-19 A | 12-Aug-20 | 15-Apr-20 | 15-May-21 | 275 | 5% | |
| 05-1710 | MVAC | Start On or After | 377 | 31-Mar-20 | 31-Mar-20 | 20-Mar-19 A | 31-Mar-20 | 02-Dec-20 | 02-Dec-20 | 246 | 5% | |
| 05-1720 | Odour Control | Start On or After | 507 | 31-Mar-20 | 12-Aug-20 | 25-Mar-19 A | 12-Aug-20 | 15-Apr-20 | 28-Aug-20 | 15 | 5% | |
| 05-1730 | Plumbing | Start On or After | 135 | 31-Mar-20 | 12-Aug-20 | 31-Mar-20 | 12-Aug-20 | 15-Apr-20 | 28-Aug-20 | 15 | 0% | |
| 05-1740 | Drainage | Start On or After | 512 | 31-Mar-20 | 12-Aug-20 | 20-Mar-19 A | 12-Aug-20 | 04-Jul-20 | 16-Nov-20 | 95 | 5% | |
| 05-1750 | ELV | Start On or After | 512 | 31-Mar-20 | 12-Aug-20 | 20-Mar-19 A | 12-Aug-20 | 04-Jul-20 | 16-Nov-20 | 95 | 5% | |
| 05-1760 | Lifts and Escalators | Start On or After | 227 | 31-Mar-20 | 12-Aug-20 | 20-Mar-19 A | 12-Aug-20 | 20-Jul-20 | 02-Dec-20 | 111 | 5% | |
| 05-1760-1(M20) | Building Management System (BMS) | Start On or After | 227 | 31-Mar-20 | 12-Aug-20 | 30-Dec-19 A | 12-Aug-20 | 31-Dec-20 | 15-May-21 | 275 | 5% | |
| 05-1760-1(M20) | Building Management System (BMS) | Start On or After | 89 | 31-Mar-20 | 27-Jun-20 | 31-Mar-20 | 27-Jun-20 | 04-Jul-20 | 30-Sep-20 | 95 | 0% | |
| EP_SP_66_12-WP-3-M28.05.01.05 AIP Wastewater Treatment Plant (2.5) | | | | | | | | | | | | |
| 05-1780 | Architectural Design (2.5.00) | Start On or After | 715 | 31-Mar-20 | 16-Sep-20 | 03-Oct-18 A | 16-Sep-20 | 15-Apr-20 | 04-Jul-21 | 230 | 65% | |
| 05-1790 | Foundation design (2.5.01) | Start On or After | 605 | 31-Mar-20 | 29-May-20 | 03-Oct-18 A | 29-May-20 | 26-Dec-20 | 24-Feb-21 | 270 | 65% | |
| 05-1800 | Structural design (2.5.02) | Start On or After | 0 | 31-Mar-20 | 31-Mar-20 | 31-Mar-20 | 31-Mar-20 | 04-Jul-21 | 04-Jul-21 | 460 | 0% | |
| 05-1810 | Electrical and instrumentation works design (2.5.03) | Start On or After | 556 | 31-Mar-20 | 16-Sep-20 | 11-Mar-19 A | 16-Sep-20 | 30-May-20 | 16-Nov-20 | 60 | 45% | |
| 05-1820 | Mechanical works design (2.5.04) | Start On or After | 289 | 31-Mar-20 | 16-Sep-20 | 24-Oct-18 A | 09-Aug-19 A | | | 100% | 100% | |
| 05-2790 | Fire services installation design (2.5.05) | Start On or After | 282 | 31-Mar-20 | 12-Jul-19 A | 03-Oct-18 A | 12-Jul-19 A | | | 100% | 100% | |
| 05-2790 | Fire services installation design (2.5.05) | Start On or After | 530 | 31-Mar-20 | 28-Jun-20 | 16-Jan-19 A | 28-Jun-20 | 05-Feb-21 | 06-May-21 | 311 | 5% | |
| EP_SP_66_12-WP-3-M28.05.01.05.7 Building services design (excluding fire services installation design) (2.5.06) | | | | | | | | | | | | |
| 05-1830 | Electrical Services and Lighting for Wastewater Treatment Plant Building (2.5.06.01) | Start On or After | 575 | 31-Mar-20 | 12-Aug-20 | 16-Jan-19 A | 12-Aug-20 | 15-Apr-20 | 02-Dec-20 | 111 | 25% | |
| 05-1840 | MVAC (2.5.06.02) | Start On or After | 470 | 31-Mar-20 | 29-Apr-20 | 16-Jan-19 A | 29-Apr-20 | 02-Nov-20 | 02-Dec-20 | 216 | 25% | |
| 05-1850 | Odour Control (2.5.06.03) | Start On or After | 560 | 31-Mar-20 | 28-Jul-20 | 16-Jan-19 A | 28-Jul-20 | 30-Apr-20 | 28-Aug-20 | 30 | 25% | |
| 05-1860 | Plumbing (2.5.06.04) | Start On or After | 135 | 31-Mar-20 | 12-Aug-20 | 31-Mar-20 | 12-Aug-20 | 15-Apr-20 | 28-Aug-20 | 15 | 0% | |
| 05-1870 | Drainage (2.5.06.05) | Start On or After | 560 | 31-Mar-20 | 28-Jul-20 | 16-Jan-19 A | 28-Jul-20 | 19-Jul-20 | 16-Nov-20 | 110 | 25% | |
| 05-1880 | ELV (2.5.06.06) | Start On or After | 560 | 31-Mar-20 | 28-Jul-20 | 16-Jan-19 A | 28-Jul-20 | 19-Jul-20 | 16-Nov-20 | 110 | 25% | |
| 05-1880 | ELV (2.5.06.06) | Start On or After | 560 | 31-Mar-20 | 28-Jul-20 | 16-Jan-19 A | 28-Jul-20 | 04-Aug-20 | 02-Dec-20 | 126 | 25% | |
| EP_SP_66_12-WP-3-M28.05.01.06 AIP Desalination Plant Building (2.6) | | | | | | | | | | | | |
| 05-1900 | Architectural Design (2.6.00) | Start On or After | 706 | 31-Mar-20 | 12-Aug-20 | 07-Sep-18 A | 12-Aug-20 | 15-Apr-20 | 25-Sep-21 | 408 | 65% | |
| 05-1910 | Foundation design (2.6.01) | Start On or After | 631 | 31-Mar-20 | 29-May-20 | 07-Sep-18 A | 29-May-20 | 22-Nov-20 | 21-Jan-21 | 236 | 65% | |

Programme for Design and Construction Works
March 2020 Update (Rev WP-3-M28)
 Page 4 of 23

| | | |
|-----------------------|---------------------------|--------------------|
| Primary Baseline | Critical Remaining Work | Actual Milestone |
| WP3 BL Critical Works | Baseline Milestone | Critical Milestone |
| Remaining Work | WP3 BL Critical Milestone | |
| Actual Work | Milestone | |

| Activity ID | Activity Name | Primary Constraint | At Completion Duration | Current Start | Current Finish | Actual Start | Actual Finish | Latest Start | Latest Finish | Total Float | Activity % Complete | M28 Remarks |
|---|--|---------------------|------------------------|---------------|----------------|--------------|---------------|--------------|---------------|-------------|---------------------|-------------|
| 05-1920 | Structural design (2.6.02) | Start On or After | 206 | | | 21-May-19 A | 13-Dec-19 A | | | | 100% | |
| 05-1930 | Electrical and instrumentation works design (2.6.03) | Start On or After | 289 | | | 24-Oct-18 A | 09-Aug-19 A | | | | 100% | |
| 05-1940 | Mechanical works design (2.6.04) | Start On or After | 195 | | | 30-Nov-18 A | 13-Jun-19 A | | | | 100% | |
| 05-1950 | Fire services installation design (2.6.05) (3 Packages) | Start On or After | 462 | 31-Mar-20 | 24-Jun-20 | 20-Mar-19 A | 24-Jun-20 | 09-Feb-21 | 06-May-21 | 316 | 19% | |
| EP_SP_66_12-WP-3-M28.05.01.06.7 Building services design (excluding fire services installation design) (2.6.06) | | | | | | | | | | | | |
| 05-1960 | Electrical Services and Lighting (2.6.06.01) | Start On or After | 512 | 31-Mar-20 | 12-Aug-20 | 20-Mar-19 A | 12-Aug-20 | 15-Apr-20 | 02-Dec-20 | 111 | 5% | |
| 05-1970 | MVAC | Start On or After | 507 | 31-Mar-20 | 12-Aug-20 | 25-Mar-19 A | 12-Aug-20 | 15-Apr-20 | 28-Aug-20 | 15 | 5% | |
| 05-1980 | Odour Control | Start On or After | 135 | 31-Mar-20 | 12-Aug-20 | 31-Mar-20* | 12-Aug-20 | 15-Apr-20 | 28-Aug-20 | 15 | 0% | |
| 05-1990 | Plumbing | Start On or After | 512 | 31-Mar-20 | 12-Aug-20 | 20-Mar-19 A | 12-Aug-20 | 04-Jul-20 | 16-Nov-20 | 95 | 5% | |
| 05-2000 | Drainage | Start On or After | 512 | 31-Mar-20 | 12-Aug-20 | 20-Mar-19 A | 12-Aug-20 | 04-Jul-20 | 16-Nov-20 | 95 | 5% | |
| 05-2010 | ELV | Start On or After | 512 | 31-Mar-20 | 12-Aug-20 | 20-Mar-19 A | 12-Aug-20 | 20-Jul-20 | 02-Dec-20 | 111 | 5% | |
| EP_SP_66_12-WP-3-M28.05.01.07 AIP Administration Building (2.7) | | | | | | | | | | | | |
| 05-2020 | Architectural Design (2.7.00) | Start On or After | 666 | 31-Mar-20 | 29-May-20 | 03-Aug-18 A | 29-May-20 | 23-Oct-20 | 22-Dec-20 | 206 | 65% | |
| 05-2030 | Foundation design (2.7.01) | Start On or After | 142 | | | 30-Sep-19 A | 19-Feb-20 A | | | | 100% | |
| 05-2040 | Structural design (2.7.02) | Start On or After | 446 | 31-Mar-20 | 16-Oct-20 | 29-Jul-19 A | 16-Oct-20 | 09-Oct-21 | 27-Apr-22 | 557 | 65% | |
| 05-2050 | Electrical and instrumentation works design (2.7.03) | Start On or After | 135 | 31-Mar-20 | 12-Aug-20 | 31-Mar-20* | 12-Aug-20 | 04-Oct-20 | 16-Feb-21 | 187 | 0% | |
| 05-2060 | Fire services installation design (3 Packages) (2.7.04) | Start On or After | 332 | 31-Mar-20 | 31-Jul-20 | 03-Sep-19 A | 31-Jul-20 | 04-Dec-20 | 06-Apr-21 | 249 | 9.5% | |
| EP_SP_66_12-WP-3-M28.05.01.07.6 Building services design (excluding fire services installation design) (2.7.05) | | | | | | | | | | | | |
| 05-2070 | Electrical Services and Lighting (2.7.05.01) | Start On or After | 345 | 31-Mar-20 | 12-Aug-20 | 03-Sep-19 A | 12-Aug-20 | 15-Apr-20 | 02-Dec-20 | 111 | 5% | |
| 05-2080 | MVAC | Start On or After | 345 | 31-Mar-20 | 12-Aug-20 | 03-Sep-19 A | 12-Aug-20 | 15-Apr-20 | 28-Aug-20 | 15 | 5% | |
| 05-2090 | Odour Control | Start On or After | 135 | 31-Mar-20 | 12-Aug-20 | 31-Mar-20* | 12-Aug-20 | 15-Apr-20 | 28-Aug-20 | 15 | 0% | |
| 05-2100 | Plumbing | Start On or After | 345 | 31-Mar-20 | 12-Aug-20 | 03-Sep-19 A | 12-Aug-20 | 04-Jul-20 | 16-Nov-20 | 95 | 5% | |
| 05-2110 | Drainage | Start On or After | 345 | 31-Mar-20 | 12-Aug-20 | 03-Sep-19 A | 12-Aug-20 | 04-Jul-20 | 16-Nov-20 | 95 | 5% | |
| 05-2120 | ELV | Start On or After | 345 | 31-Mar-20 | 12-Aug-20 | 03-Sep-19 A | 12-Aug-20 | 20-Jul-20 | 02-Dec-20 | 111 | 5% | |
| 05-2130 | Lifts and Escalators | Start On or After | 227 | 31-Mar-20 | 12-Aug-20 | 30-Dec-19 A | 12-Aug-20 | 04-Jun-20 | 17-Oct-20 | 65 | 5% | |
| 05-2130-1(M20) | Building Management System (BMS) | Start On or After | 89 | 31-Mar-20 | 27-Jun-20 | 31-Mar-20* | 27-Jun-20 | 04-Jul-20 | 30-Sep-20 | 95 | 0% | |
| EP_SP_66_12-WP-3-M28.05.01.08 AIP IWMF Substation (2.8) | | | | | | | | | | | | |
| 05-2140 | Architectural Design (2.8.00) | Start On or After | 437 | | | 03-Aug-18 A | 14-Oct-19 A | | | | 100% | |
| 05-2150 | Foundation design (2.8.01) | Start On or After | 124 | | | 17-May-19 A | 18-Sep-19 A | | | | 100% | |
| 05-2160 | Structural design (2.8.02) | Start On or After | 168 | | | 31-Oct-18 A | 17-Apr-19 A | | | | 100% | |
| 05-2170 | Electrical and instrumentation works design (2.8.03) (14 Packages) | Start On or After | 245 | 31-Mar-20 | 25-Jun-20 | 25-Oct-19 A | 25-Jun-20 | 02-Jul-20 | 27-Sep-20 | 93 | 51.67% | |
| 05-2180 | Mechanical works design (2.8.04) | Start On or After | 135 | 31-Mar-20 | 12-Aug-20 | 31-Mar-20* | 12-Aug-20 | 01-Mar-20 | 14-Jul-20 | -30 | 0% | |
| 05-2190 | Fire services installation design (2.8.05) (2 Packages) | Start On or After | 612 | 31-Mar-20 | 30-Jul-20 | 27-Nov-18 A | 30-Jul-20 | 21-Sep-20 | 21-Jan-21 | 174 | 28.5% | |
| EP_SP_66_12-WP-3-M28.05.01.08.7 Building services design (excluding fire services installation design) (2.8.06) | | | | | | | | | | | | |
| 05-2200 | Electrical Services and Lighting (2.8.06.01) | Start On or After | 591 | 31-Mar-20 | 09-Jul-20 | 27-Nov-18 A | 09-Jul-20 | 19-May-20 | 02-Dec-20 | 145 | 36% | |
| 05-2210 | MVAC | Start On or After | 576 | 31-Mar-20 | 25-Jun-20 | 27-Nov-18 A | 25-Jun-20 | 06-Sep-20 | 02-Dec-20 | 160 | 36% | |
| 05-2220 | Plumbing | Start On or After | 591 | 31-Mar-20 | 09-Jul-20 | 27-Nov-18 A | 09-Jul-20 | 07-Aug-20 | 16-Nov-20 | 129 | 65% | |
| 05-2230 | Drainage | Start On or After | 387 | 31-Mar-20 | 28-Jun-20 | 27-Nov-18 A | 28-Jun-20 | 03-Sep-20 | 02-Dec-20 | 156 | 65% | |
| 05-2240 | ELV | Start On or After | 580 | 31-Mar-20 | 28-Jun-20 | 27-Nov-18 A | 28-Jun-20 | 03-Sep-20 | 02-Dec-20 | 156 | 65% | |
| 05-2240-1(M20) | Building Management System (BMS) | Start On or After | 89 | 31-Mar-20 | 27-Jun-20 | 31-Mar-20* | 27-Jun-20 | 03-Jul-20 | 29-Sep-20 | 94 | 0% | |
| EP_SP_66_12-WP-3-M28.05.01.09 AIP Air Quality Monitoring Stations (2.9) | | | | | | | | | | | | |
| 05-2250 | Design of the Air Quality Monitoring Stations (2.9.01) | Start On or After | 120 | 31-Mar-20 | 28-Jul-20 | 31-Mar-20* | 28-Jul-20 | 06-Jul-20 | 03-Nov-20 | 97 | 0% | |
| EP_SP_66_12-WP-3-M28.05.01.10 AIP Roads and Utilities (2.10) | | | | | | | | | | | | |
| EP_SP_66_12-WP-3-M28.05.01.10.1 Permanent road works layout on the Artificial Island (2.10.01) | | | | | | | | | | | | |
| 05-2260 | Roads and hardstandings layout | Start On or After | 135 | 17-Dec-20 | 30-Apr-21 | 17-Dec-20* | 30-Apr-21 | 26-Aug-22 | 07-Jun-23 | 767 | 0% | |
| 05-2270 | Road signage and markings | Start On or After | 135 | 17-Dec-20 | 30-Apr-21 | 17-Dec-20* | 30-Apr-21 | 23-Jan-23 | 07-Jun-23 | 767 | 0% | |
| EP_SP_66_12-WP-3-M28.05.01.10.2 Sewerage design on the Artificial Island (2.10.02) | | | | | | | | | | | | |
| 05-2280 | Foul Sewerage concept sizing | Start On or After | 330 | 31-Mar-20 | 12-Aug-20 | 18-Sep-19 A | 12-Aug-20 | 03-Aug-20 | 30-Jan-22 | 535 | 65% | |
| 05-2290 | Contaminated Sewerage concept / sizing | Start On or After | 330 | 31-Mar-20 | 12-Aug-20 | 18-Sep-19 A | 12-Aug-20 | 17-Sep-21 | 30-Jan-22 | 535 | 65% | |
| EP_SP_66_12-WP-3-M28.05.01.10.3 Drainage system design on the Artificial Island (2.10.03) | | | | | | | | | | | | |
| 05-2300 | Surface Water Drainage System concept / sizing | Start On or After | 449 | 31-Mar-20 | 12-Aug-20 | 22-May-19 A | 12-Aug-20 | 03-Aug-20 | 16-Dec-20 | 125 | 65% | |
| 05-2310 | First Flush Drainage System concept / sizing | Start On or After | 449 | 31-Mar-20 | 12-Aug-20 | 22-May-19 A | 12-Aug-20 | 21-Nov-20 | 05-Apr-21 | 235 | 65% | |
| EP_SP_66_12-WP-3-M28.05.01.10.4 Water supply system design on the Artificial Island (2.10.04) | | | | | | | | | | | | |
| 05-2320 | Potable Water Distribution System (2.10.04.01) | Start On or After | 349 | 31-Mar-20 | 12-Aug-20 | 30-Aug-19 A | 12-Aug-20 | 30-Nov-19 | 01-Mar-22 | 565 | 5% | |
| 05-2330 | Recycled Water System (2.10.04.02) | Start On or After | 272 | 31-Mar-20 | 12-Aug-20 | 14-Nov-19 A | 12-Aug-20 | 28-Aug-21 | 10-Jan-22 | 515 | 5% | |
| 05-2340 | Irrigation System (2 Packages) (2.10.04.03) | Start On or After | 135 | 31-Mar-20 | 12-Aug-20 | 31-Mar-20* | 12-Aug-20 | 03-Aug-20 | 16-Dec-20 | 125 | 0% | |
| 05-2350 | Rainwater harvesting System (2.10.04.04) | Start On or After | 135 | 31-Mar-20 | 12-Aug-20 | 31-Mar-20* | 12-Aug-20 | 03-Aug-20 | 16-Dec-20 | 125 | 0% | |
| 05-2360 | Water Tanks (2.10.04.05) | Start On or After | 135 | 31-Mar-20 | 12-Aug-20 | 31-Mar-20* | 12-Aug-20 | 17-Oct-21 | 01-Mar-22 | 565 | 0% | |
| 05-2370 | External FS Systems (2.10.04.06) | Start On or After | 283 | 31-Mar-20 | 12-Aug-20 | 04-Nov-19 A | 12-Aug-20 | 17-Oct-21 | 01-Mar-22 | 565 | 5% | |
| 05-2370-1(M24) | E&M system for seawater intake and brine discharge (2.10.04.07) | Finish On or Before | 307 | 31-Mar-20 | 01-Jul-20 | 30-Aug-19 A | 01-Jul-20* | 30-Nov-19 | 01-Mar-20 | -122 | 5% | |
| 05-2370-2(M24) | Building Services system for seawater intake and brine discharge (2.10.04.09) | Finish On or Before | 88 | 31-Mar-20 | 26-Jun-20 | 31-Mar-20 | 26-Jun-20* | 30-Nov-19 | 25-Feb-20 | -122 | 0% | |
| EP_SP_66_12-WP-3-M28.05.01.10.6 Design of telecommunication and other utilities (2.10.06) | | | | | | | | | | | | |
| 05-2380 | Power Distribution System concept / schematics | Start On or After | 135 | 31-Mar-20 | 12-Aug-20 | 31-Mar-20* | 12-Aug-20 | 31-Dec-20 | 15-May-21 | 275 | 0% | |
| 05-2390 | Site Lighting Concept / Schematics | Start On or After | 239 | 31-Mar-20 | 12-Aug-20 | 18-Dec-19 A | 12-Aug-20 | 26-Jan-20 | 09-Jun-20 | -65 | 5% | |
| 05-2400 | Lightning Protection System concept / schematics | Start On or After | 239 | 31-Mar-20 | 12-Aug-20 | 18-Dec-19 A | 12-Aug-20 | 13-Aug-20 | 26-Dec-20 | 135 | 5% | |
| 05-2410 | Site ELV Network System - Communications System concept / schematics | Start On or After | 135 | 31-Mar-20 | 12-Aug-20 | 31-Mar-20* | 12-Aug-20 | 31-Dec-20 | 15-May-21 | 275 | 0% | |
| 05-2420 | Site ELV Network System - Security Systems concept / schematics | Start On or After | 135 | 31-Mar-20 | 12-Aug-20 | 31-Mar-20* | 12-Aug-20 | 31-Dec-20 | 15-May-21 | 275 | 0% | |
| 05-2430 | Site ELV Network System - Navigation aids concept / schematics | Start On or After | 135 | 31-Mar-20 | 12-Aug-20 | 31-Mar-20* | 12-Aug-20 | 31-Dec-20 | 15-May-21 | 275 | 0% | |
| 05-2440 | Microwave transmission of FS direct link (2.10.06.07) | Start On or After | 580 | 31-Mar-20 | 28-Jun-20 | 27-Nov-18 A | 28-Jun-20 | 14-Feb-21 | 15-May-21 | 320 | 45% | |
| 05-2450 | Fuel Handling System concept / schematics (2.10.06.08) | Start On or After | 202 | 31-Mar-20 | 12-Aug-20 | 24-Jan-20 A | 12-Aug-20 | 10-Sep-22 | 23-Jan-23 | 893 | 0% | |
| 05-3190 | Computerised Maintenance Management System (CMMS) | Start On or After | 380 | 31-Mar-20 | 13-Jul-20 | 30-Jun-19 A | 13-Jul-20 | 28-May-20 | 10-Sep-20 | 58 | 0% | |
| 05-3200 | Information and Document Management System (IDMS) | Start On or After | 448 | 31-Mar-20 | 13-Jul-20 | 23-Apr-19 A | 13-Jul-20 | 28-May-20 | 10-Sep-20 | 58 | 0% | |
| 05-3840 (M22) | Automatic Traffic Control System (ATCS) | Start On | 300 | 31-Mar-20 | 24-Jan-21 | 31-Mar-20* | 24-Jan-21 | 18-Dec-19 | 12-Oct-20 | -104 | 0% | |
| EP_SP_66_12-WP-3-M28.05.01.10.7 Utility ducts/Pipebridges design (2.10.25) | | | | | | | | | | | | |
| 05-2460 | Design of Pipe / Utilities Trenches concept | Start On or After | 135 | 30-May-21 | 11-Oct-21 | 30-May-21* | 11-Oct-21 | 19-Dec-22 | 03-May-23 | 568 | 0% | |
| 05-2470 | Utility ducts network | Start On or After | 135 | 31-Mar-20 | 12-Aug-20 | 31-Mar-20* | 12-Aug-20 | 19-Apr-20 | 01-Sep-20 | 19 | 0% | |
| 05-2480 | Pipebridge network - Layout | Start On or After | 120 | 31-Mar-20 | 28-Jul-20 | 31-Mar-20* | 28-Jul-20 | 04-May-20 | 01-Sep-20 | 34 | 0% | |
| 05-2490 | Pipebridge network - Foundation Plan | Start On or After | 135 | 31-Mar-20 | 12-Aug-20 | 31-Mar-20* | 12-Aug-20 | 19-Apr-20 | 01-Sep-20 | 19 | 0% | |
| 05-2500 | Pipebridge network - Structure Plan | Start On or After | 135 | 31-Mar-20 | 12-Aug-20 | 31-Mar-20* | 12-Aug-20 | 19-Apr-20 | 01-Sep-20 | 19 | 0% | |
| EP_SP_66_12-WP-3-M28.05.01.11 AIP Architectural, Finishes and Landscaping Works (2.11) | | | | | | | | | | | | |
| EP_SP_66_12-WP-3-M28.05.01.11.1 External and internal finishes design for Incineration Plant Buildings (2.11.01) | | | | | | | | | | | | |
| 05-2510 | External and internal finishes design for Incineration Plant Building (6 Packages) | Start On or After | 137 | 31-Mar-20 | 14-Aug-20 | 31-Mar-20* | 14-Aug-20 | 28-Jun-21 | 12-Nov-21 | 454 | 0% | |
| 05-2520 | External and internal finishes design for ACC Equipment Structure | Start On or After | 137 | 31-Mar-20 | 14-Aug-20 | 31-Mar-20* | 14-Aug-20 | 28-Jun-21 | 12-Nov-21 | 454 | 0% | |
| 05-2530 | External and internal finishes design for Turbine Hall Building (3 Packages) | Start On or After | 137 | 31-Mar-20 | 14-Aug-20 | 31-Mar-20* | 14-Aug-20 | 26-Sep-21 | 10-Feb-22 | 544 | 0% | |
| 05-2540 | External and internal finishes design for Air Compressor Building (3 Packages) | Start On or After | 137 | 31-Mar-20 | 14-Aug-20 | 31-Mar-20* | 14-Aug-20 | 24-Aug-21 | 08-Jan-22 | 511 | 0% | |
| 05-2550 | External and internal finishes design for Chimney (6 Packages) | Start On or After | 137 | 31-Mar-20 | 14-Aug-20 | 31-Mar-20* | 14-Aug-20 | 27-Aug-21 | 11-Jan-22 | 514 | 0% | |
| 05-2560 | External and internal finishes design for Reception Pavilion (5 Packages) | Start On or After | 137 | 31-Mar-20 | 14-Aug-20 | 31-Mar-20* | 14-Aug-20 | 27-Aug-21 | 11-Jan-22 | 514 | 0% | |
| EP_SP_66_12-WP-3-M28.05.01.11.2 External and internal finishes design for MT Plant Building (2.11.02) | | | | | | | | | | | | |
| 05-2570 | External and internal finishes design for MT Plant Building (2.11.02) | Start On or After | 136 | 31-Mar-20 | 13-Aug-20 | 31-Mar-20 | 13-Aug-20 | 13-Jun-21 | 27-Oct-21 | 439 | 0% | |

| Date | Revision | Checked | Approved |
|-----------|-------------------------|---------|----------|
| 04/12/17 | Rev. 0 - 1st Issue | | |
| 31-Jan-20 | Rev 3 - Jan 2020 Update | | |
| 29-Feb-20 | Rev 3 - Feb 2020 Update | | |
| 30-Mar-20 | Rev 3 - Mar 2020 Update | | |

| | | |
|--|------------------|--|
| | Primary Baseline | |
|--|------------------|--|

