

## Appendix A Master Programme







Main project schedule table with columns for Activity ID, Activity Name, Primary Constraint, At Completion Duration, Current Start, Current Finish, Actual Start, Actual Finish, Late Start, Late Finish, Total Float, Activity % Complete, M28 Remarks, and a Gantt chart area showing task progress from 2017 to 2020.

Programme for Design and Construction Works  
March 2020 Update (Rev WP-3-M28)

Legend for project status: Primary Baseline (yellow), WP3 BL Critical Works (red), Remaining Work (green), Actual Work (blue), Critical Remaining Work (red diamond), Baseline Milestone (yellow diamond), WP3 BL Critical Milestone (red diamond), Milestone (green diamond), Actual Milestone (blue diamond), Critical Milestone (red diamond).

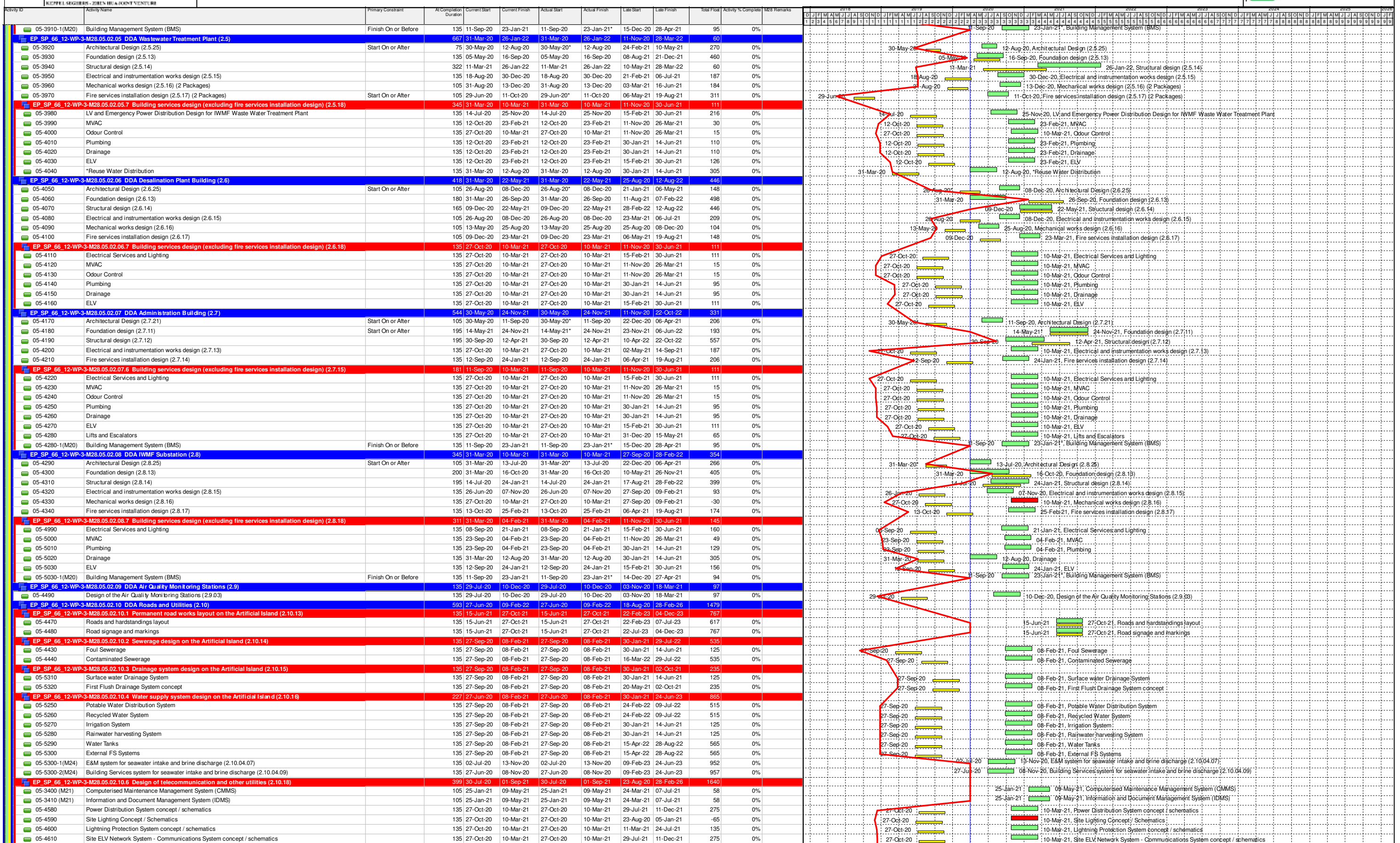
Table with 5 columns: Date, Revision, Checked, Approved. Contains update history: 04/12/17 (Rev 0 - 1st Issue), 31-Jan-20 (Rev 3 - Jan 2020 Update), 29-Feb-20 (Rev 3 - Feb 2020 Update), 30-Mar-20 (Rev 3 - Mar 2020 Update).











# Programme for Design and Construction Works

## March 2020 Update (Rev WP-3-M28)

Primary Baseline	Critical Remaining Work	Actual Milestone
WP3 BL Critical Works	Baseline Milestone	Critical Milestone
Remaining Work	WP3 BL Critical Milestone	
Actual Work	Milestone	

Date	Revision	Checked	Approved
04/12/17	Rev. 0 - 1st Issue		
31-Jan-20	Rev 3 - Jan 2020 Update		
29-Feb-20	Rev 3 - Feb 2020 Update		
30-Mar-20	Rev 3 - Mar 2020 Update		



Activity ID	Activity Name	Primary Constraint	At Completion Duration	Current Start	Current Finish	Actual Start	Actual Finish	Late Start	Late Finish	Total Float	Activity % Complete	M28 Remarks	Gantt Chart (2017-2026)																											
06-1110	Material & Equipment Procurement		250	27-Sep-20	03-Jun-21	27-Sep-20	03-Jun-21	14-Sep-20	22-May-21	-13	0%		[Gantt bars for 06-1110]																											
06-1120	Off-site Fabrication of ACC Units		500	04-Jun-21	16-Oct-22	04-Jun-21	16-Oct-22	22-May-21	04-Oct-22	-13	0%		[Gantt bars for 06-1120]																											
06-1130	Factory Acceptance Test (FAT)		60	17-Oct-22	15-Dec-22	17-Oct-22	15-Dec-22	04-Oct-22	03-Dec-22	-13	0%		[Gantt bars for 06-1130]																											
06-1140	Delivery to Site		60	16-Dec-22	13-Feb-23	16-Dec-22	13-Feb-23	03-Dec-22	01-Feb-23	-13	0%		[Gantt bars for 06-1140]																											
<b>EP_SP_66_12-WP-3-M28.06.4 Procurement for MT Plant Equipment</b>													[Gantt bars for sub-section 06-1150-06-1180]																											
<b>EP_SP_66_12-WP-3-M28.06.5 Procurement for WWTP Equipment</b>													[Gantt bars for sub-section 06-1190-06-1220]																											
<b>EP_SP_66_12-WP-3-M28.06.6 Procurement for Desal &amp; Demin Plant Equipment</b>													[Gantt bars for sub-section 06-1230-06-1260]																											
<b>EP_SP_66_12-WP-3-M28.06.7 Procurement for HV Transformers and Associated Equipment</b>													[Gantt bars for sub-section 06-1270-06-1300]																											
<b>EP_SP_66_12-WP-3-M28.06.7.1 Procurement of Transformers &amp; EDG</b>													[Gantt bars for sub-section 06-1270-06-1290]																											
<b>EP_SP_66_12-WP-3-M28.06.7.2 Procurement of Switchboard/Panels and Cables</b>													[Gantt bars for sub-section 06-2090-06-2120]																											
<b>EP_SP_66_12-WP-3-M28.06.8 Procurement for Control SCADA Systems</b>													[Gantt bars for sub-section 06-1310-06-1340]																											
<b>EP_SP_66_12-WP-3-M28.06.9 Procurement for Onshore Crane at Berth</b>													[Gantt bars for sub-section 06-1350-06-1380]																											
<b>EP_SP_66_12-WP-3-M28.06.10 Procurement and Off-site Fabrication of Pipe Bridges (Incl. Pipings)</b>													[Gantt bars for sub-section 06-1390-06-1420]																											
<b>EP_SP_66_12-WP-3-M28.06.11 Procurement for LV Electrical System for On-site Installation</b>													[Gantt bars for sub-section 06-1430-06-1460]																											
<b>EP_SP_66_12-WP-3-M28.06.12 Procurement for Ventilation and Odor Treatment System</b>													[Gantt bars for sub-section 06-1470-06-1500]																											
<b>EP_SP_66_12-WP-3-M28.06.13 Procurement for Fire Services System</b>													[Gantt bars for sub-section 06-1510-06-1540]																											
<b>EP_SP_66_12-WP-3-M28.06.14 Procurement for Plumbing System</b>													[Gantt bars for sub-section 06-1550-06-1580]																											
<b>EP_SP_66_12-WP-3-M28.06.15 Procurement for Drainage System</b>													[Gantt bars for sub-section 06-1590-06-1620]																											
<b>EP_SP_66_12-WP-3-M28.06.16 Procurement for Lighting System</b>													[Gantt bars for sub-section 06-1630-06-1660]																											
<b>EP_SP_66_12-WP-3-M28.06.17 Procurement for Security, Surveillance &amp; Communication System</b>													[Gantt bars for sub-section 06-1670]																											

Primary Baseline	Critical Remaining Work	Actual Milestone
WP3 BL Critical Works	Baseline Milestone	Critical Milestone
Remaining Work	WP3 BL Critical Milestone	
Actual Work	Milestone	

Date	Revision	Checked	Approved
04/12/17	Rev. 0 - 1st Issue		
31-Jan-20	Rev 3 - Jan 2020 Update		
29-Feb-20	Rev 3 - Feb 2020 Update		
30-Mar-20	Rev 3 - Mar 2020 Update		

Main project schedule table with columns: Activity ID, Activity Name, Primary Constraint, At Completion Duration, Current Start, Current Finish, Actual Start, Actual Finish, Late Start, Late Finish, Total Float, Activity % Complete, M28 Remarks. Includes a Gantt chart visualization on the right side.

Programme for Design and Construction Works  
March 2020 Update (Rev WP-3-M28)

Legend for work types and milestones: Primary Baseline, WP3 BL Critical Works, Remaining Work, Actual Work, Critical Remaining Work, Baseline Milestone, WP3 BL Critical Milestone, Milestone, Actual Milestone, Critical Milestone. Includes a table for Date, Revision, Checked, and Approved.







KEPPEL SEGHERS - ZHEN HUA JOINT VENTURE

Contract No. EP/SP/66/12  
Integrated Waste Management Facilities, Phase 1



Main project schedule table with columns for Activity ID, Activity Name, Duration, Current Start, Current Finish, Actual Start, Actual Finish, Late Start, Late Finish, Total Float, Activity % Complete, M28 Remarks, and monthly Gantt bars from 2017 to 2023.

# Programme for Design and Construction Works March 2020 Update (Rev WP-3-M28)

Legend for work status and milestones including Primary Baseline, WP3 BL Critical Works, Remaining Work, Actual Work, Critical Remaining Work, Baseline Milestone, WP3 BL Critical Milestone, Milestone, Actual Milestone, and Critical Milestone.

Date	Revision	Checked	Approved
04/12/17	Rev. 0 - 1st Issue		
31-Jan-20	Rev 3 - Jan 2020 Update		
29-Feb-20	Rev 3 - Feb 2020 Update		
30-Mar-20	Rev 3 - Mar 2020 Update		









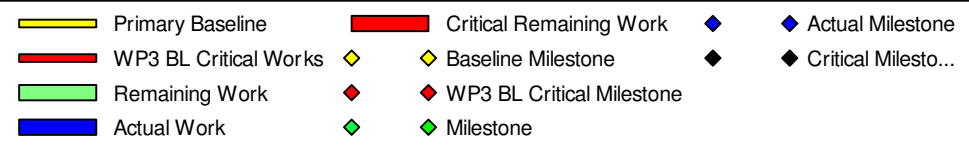
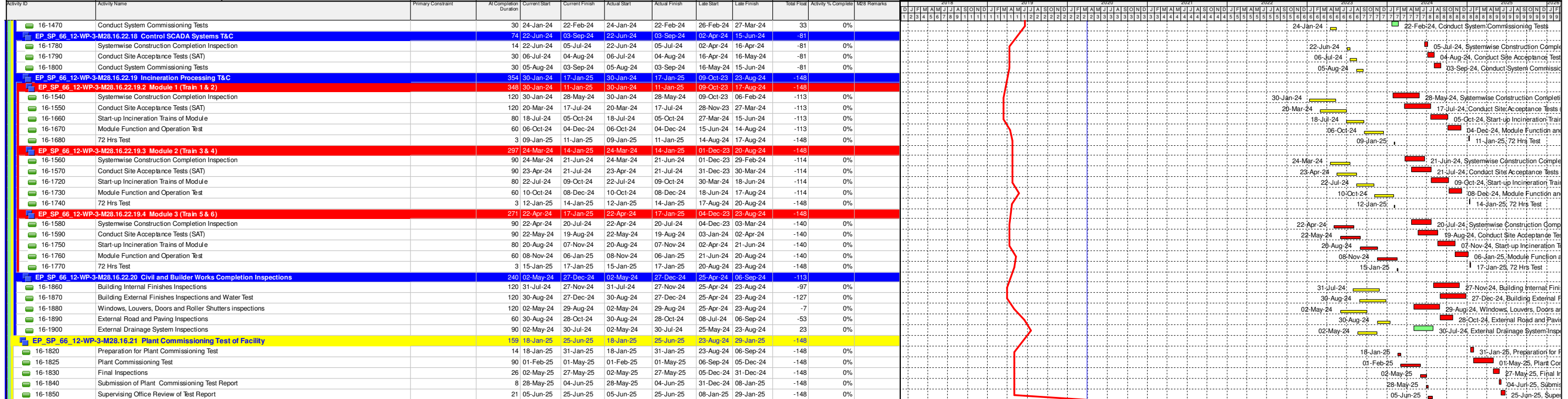












Date	Revision	Checked	Approved
04/12/17	Rev. 0 - 1st Issue		
31-Jan-20	Rev 3 - Jan 2020 Update		
29-Feb-20	Rev 3 - Feb 2020 Update		
30-Mar-20	Rev 3 - Mar 2020 Update		