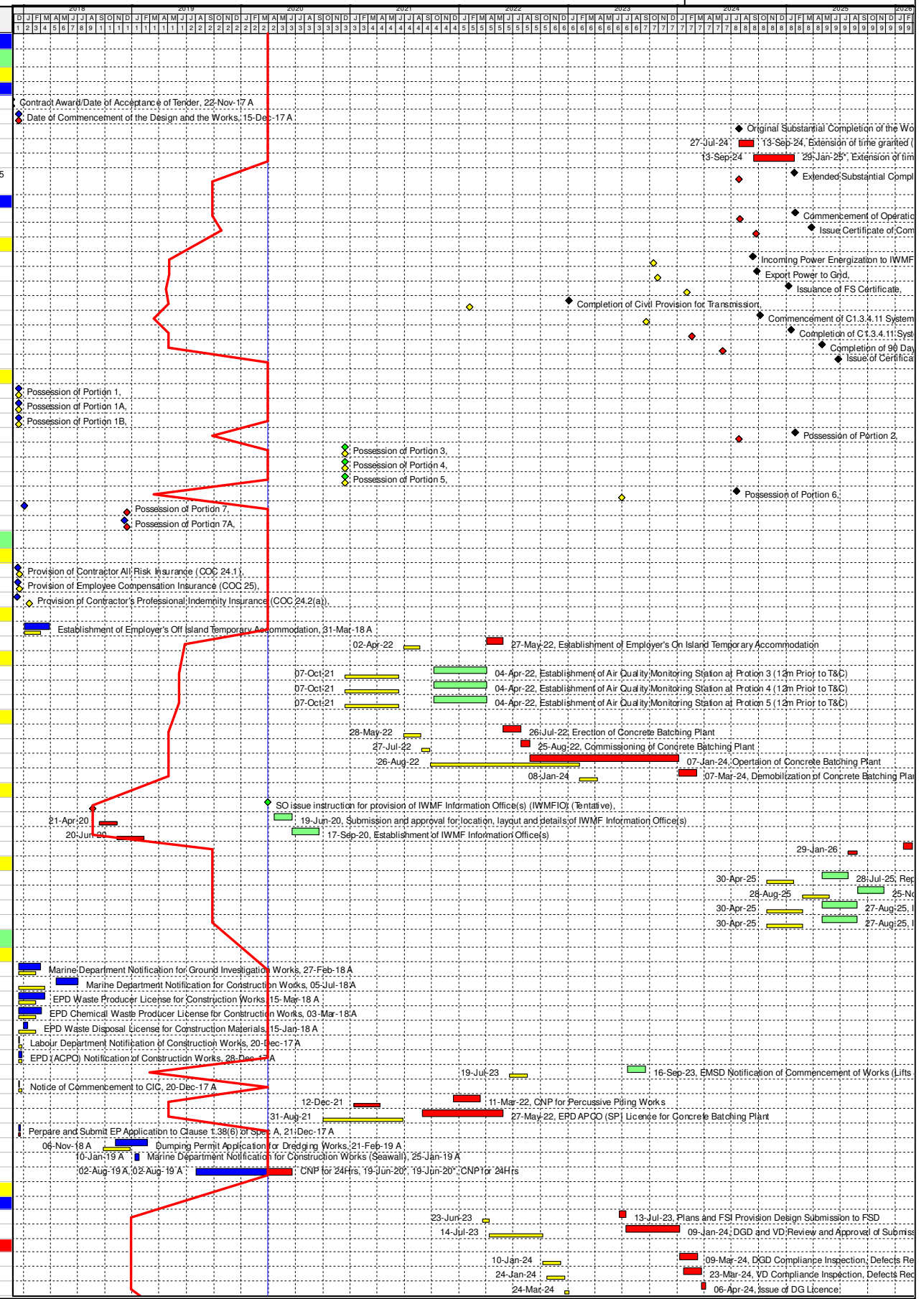


Appendix A Master Programme

Activity ID	Activity Name	Primary Constraint	At Completion Duration	Current Start	Current Finish	Actual Start	Actual Finish	Late Start	Late Finish	Total Float	Activity % Complete	M28 Remarks
EP_SP_66_12-WP-3-M28 Programme for Design and Construction Works WP3-M28												
EP_SP_66_12-WP-3-M28.01 Key Dates												
EP_SP_66_12-WP-3-M28.01.1 Contractual Key Dates												
EP_SP_66_12-WP-3-M28.01.1.1 Design and Construction Phase												
01-1000	Contract Award/Date of Acceptance of Tender	Mandatory Start	0	0	0	22-Nov-17 A	22-Nov-17 A			0	100%	Contract Award/Date of Acceptance of Tender: 22-Nov-17 A
01-1010	Date of Commencement of the Design and the Works	Mandatory Start	0	0	0	15-Dec-17 A	15-Dec-17 A			0	100%	Date of Commencement of the Design and the Works: 15-Dec-17 A
01-1015(3)(M12)	Original Substantial Completion of the Works	Mandatory Finish	0	27-Jul-24	27-Jul-24	27-Jul-24*	27-Jul-24			0	0%	
01-1015-1(3)(M12)	Extension of time granted (Claim No.1 to No.8 & No.10 to No.11)		41	27-Jul-24	13-Sep-24	27-Jul-24	13-Sep-24	27-Jul-24	13-Sep-24	0	0%	
01-1016(3)(M18)	Extension of time granted without holidays (Claim No.12 to No.26)	Mandatory Finish	138	13-Sep-24	29-Jan-25	13-Sep-24	29-Jan-25*	13-Sep-24	29-Jan-25	0	0%	
01-1020	Extended Substantial Completion of The Works	Mandatory Finish	0	29-Jan-25	29-Jan-25	29-Jan-25*	29-Jan-25			0	0%	29-Jan-2025 (noon)
EP_SP_66_12-WP-3-M28.01.2 Operation Phase												
01-1030	Commencement of Operation	Mandatory Start	0	30-Jan-25	30-Jan-25	30-Jan-25*	30-Jan-25			0	0%	
01-1230	Issue Certificate of Completion of the Works (56 days after Substantial Completion)	Mandatory Finish	0	26-Mar-25	30-Jan-25*	26-Mar-25*	30-Jan-25			0	0%	
EP_SP_66_12-WP-3-M28.01.2 Planned Completion Dates												
01-1040	Incoming Power Energization to IWMF Substation		0	10-Sep-24	02-Jun-24	10-Sep-24	02-Jun-24			-101	0%	
01-1050	Export Power to Grid		0	24-Sep-24	06-Sep-24	24-Sep-24	06-Sep-24			-19	0%	
01-1060	Issuance of FS Certificate		0	08-Jan-25	23-Aug-24	08-Jan-25	23-Aug-24			-139	0%	
01-1070	Completion of Civil Provision for Transmission		0	04-Jan-23	02-Jan-23	04-Jan-23	02-Jan-23			-3	0%	
01-1080	Commencement of C1.3.4.11 System Commissioning Test		0	06-Oct-24	15-Jun-24	06-Oct-24	15-Jun-24			-113	0%	
01-1090	Completion of C1.3.4.11 System Commission Test		0	17-Jan-25	23-Aug-24	17-Jan-25	23-Aug-24			-148	0%	
01-1100	Completion of 90 Days Plant Commissioning Test		0	01-May-25	05-Dec-24	01-May-25	05-Dec-24			-148	0%	
01-1110(3)(M15)	Issue of Certificate of Substantial Completion for the Works	Finish On or Before	0	25-Jun-25	29-Jan-25	25-Jun-25*	29-Jan-25			-148	0%	
EP_SP_66_12-WP-3-M28.01.2 Dates of Site Possessions												
01-1120	Possession of Portion 1		0			15-Dec-17 A				100%		
01-1130	Possession of Portion 1A		0			15-Dec-17 A				100%		
01-1140	Possession of Portion 1B		0			15-Dec-17 A				100%		
01-1150	Possession of Portion 2	Mandatory Finish	0	30-Jan-25	30-Jan-25*	30-Jan-25				0	0%	
01-1160	Possession of Portion 3		0	13-Dec-20	12-Jan-22	13-Dec-20	12-Jan-22			394	0%	
01-1170	Possession of Portion 4		0	13-Dec-20	12-Jan-22	13-Dec-20	12-Jan-22			394	0%	
01-1180	Possession of Portion 5		0	13-Dec-20	12-Jan-22	13-Dec-20	12-Jan-22			394	0%	
01-1190	Possession of Portion 6		0	17-Jul-24	27-Mar-24	17-Jul-24	27-Mar-24			-113	0%	
01-1200	Possession of Portion 7	Finish On or Before	0			05-Jan-18 A				100%		
01-1210	Possession of Portion 7A	Finish On or Before	0			07-Dec-18 A				100%		
EP_SP_66_12-WP-3-M28.02 Contract Preliminaries												
EP_SP_66_12-WP-3-M28.02.0 General												
01-1220	Provision of Contractor All Risk Insurance (COC 24.1)	Finish On or Before	0			11-Dec-17 A				100%		
01-1240	Provision of Employee Compensation Insurance (COC 25)	Finish On or Before	0			12-Dec-17 A				100%		
01-1250	Provision of Contractor's Professional Indemnity Insurance (COC 24.2(a))	Finish On or Before	0			11-Dec-17 A				100%		
EP_SP_66_12-WP-3-M28.02.1 Employer's Accommodations												
02-1000	Establishment of Employer's Off Island Temporary Accommodation	Finish On or Before	87	02-Apr-22	27-May-22	03-Jan-18 A	27-May-22	27-Dec-21	21-Feb-22	-96	100%	
02-1020	Establishment of Employer's On Island Temporary Accommodation		56	02-Apr-22	27-May-22	02-Apr-22	27-May-22	27-Dec-21	21-Feb-22	-96	0%	
EP_SP_66_12-WP-3-M28.02.2 Establishment of Environmental Monitoring Stations												
02-1030	Establishment of Air Quality Monitoring Station at Portion 3 (12m Prior to T&C)		180	07-Oct-21	04-Apr-22	07-Oct-21	04-Apr-22	12-Jan-22	11-Jul-22	97	0%	
02-1040	Establishment of Air Quality Monitoring Station at Portion 4 (12m Prior to T&C)		180	07-Oct-21	04-Apr-22	07-Oct-21	04-Apr-22	12-Jan-22	11-Jul-22	97	0%	
02-1050	Establishment of Air Quality Monitoring Station at Portion 5 (12m Prior to T&C)		180	07-Oct-21	04-Apr-22	07-Oct-21	04-Apr-22	12-Jan-22	11-Jul-22	97	0%	
EP_SP_66_12-WP-3-M28.02.3 Erection of Concrete Batching Plant on Artificial Island												
02-1080	Erection of Concrete Batching Plant		60	28-May-22	26-Jul-22	28-May-22	26-Jul-22	03-Jan-22	04-Mar-22	-145	0%	
02-1090	Commissioning of Concrete Batching Plant		30	27-Jul-22	25-Aug-22	27-Jul-22	25-Aug-22	04-Mar-22	03-Apr-22	-145	0%	
02-1100	Operation of Concrete Batching Plant		500	26-Aug-22	07-Jan-24	26-Aug-22	07-Jan-24	22-Jun-22	04-Nov-23	-65	0%	
02-1110	Demobilization of Concrete Batching Plant		60	08-Jan-24	07-Mar-24	08-Jan-24	07-Mar-24	04-Nov-23	03-Jan-24	-65	0%	
EP_SP_66_12-WP-3-M28.02.4 Establishment of Public Relation Office												
02-1060	SO issue instruction for provision of IWMF Information Office(s) (IWMFIO) (Tentative)		0	31-Mar-20	31-Mar-20	31-Mar-20	31-Mar-20	19-Apr-21	19-Apr-21	384	0%	
02-1070(2)	Submission and approval for location, layout and details of IWMF Information Office(s)		90	21-Apr-20	19-Jun-20	21-Apr-20	19-Jun-20	10-May-21	09-Jul-21	384	0%	
02-1120(2)	Establishment of IWMF Information Office(s)		90	20-Jun-20	17-Sep-20	20-Jun-20	17-Sep-20	09-Jul-21	07-Oct-21	384	0%	
02-1140(2)	Decommissioning of IWMF Information Office(s)		30	29-Jan-26	28-Feb-26	29-Jan-26	28-Feb-26	29-Jan-26	28-Feb-26	0	0%	
EP_SP_66_12-WP-3-M28.02.5 Replacement of Onshore Crane at Portion 2												
02-1150(2)	Replace Crane No. 1 (Incl. T&C)		90	30-Apr-25	28-Jul-25	30-Apr-25	28-Jul-25	02-Aug-25	31-Oct-25	94	0%	
02-1160(2)	Replace Crane No. 2 (Incl. T&C)		90	28-Aug-25	25-Nov-25	28-Aug-25	25-Nov-25	30-Nov-25	28-Feb-26	94	0%	
02-1170(2)	Install, Testing and Commissioning of CCTV System		120	30-Apr-25	27-Aug-25	30-Apr-25	27-Aug-25	31-Oct-25	28-Feb-26	184	0%	
02-1180(2)	Install, Testing and Commissioning of Onshore Power Supply System		120	30-Apr-25	27-Aug-25	30-Apr-25	27-Aug-25	31-Oct-25	28-Feb-26	184	0%	
EP_SP_66_12-WP-3-M28.03 Licence/Permit Applications												
EP_SP_66_12-WP-3-M28.03.1 License/Permit for Construction												
03-0900	Marine Department Notification for Ground Investigation Works		75	15-Dec-17 A	27-Feb-18 A	15-Dec-17 A	27-Feb-18 A			100%		
03-1000	Marine Department Notification for Construction Works		76	20-Apr-18 A	05-Jul-18 A	20-Apr-18 A	05-Jul-18 A			100%		
03-1010	EPD Waste Producer License for Construction Works		90	15-Dec-17 A	15-Mar-18 A	15-Dec-17 A	15-Mar-18 A			100%		
03-1020	EPD Chemical Waste Producer License for Construction Works		78	15-Dec-17 A	03-Mar-18 A	15-Dec-17 A	03-Mar-18 A			100%		
03-1030	EPD Waste Disposal License for Construction Materials		12	03-Jan-18 A	15-Jan-18 A	03-Jan-18 A	15-Jan-18 A			100%		
03-1040	Labour Department Notification of Construction Works	Finish On or Before	5	15-Dec-17 A	20-Dec-17 A	15-Dec-17 A	20-Dec-17 A			100%		
03-1050	EPD (ACPO) Notification of Construction Works	Finish On or Before	14	15-Dec-17 A	28-Dec-17 A	15-Dec-17 A	28-Dec-17 A			100%		
03-1060	EMSD Notification of Commencement of Works (Lifts & Escalators)		60	19-Jul-23	16-Sep-23	19-Jul-23	16-Sep-23	22-Sep-23	21-Nov-23	65	0%	
03-1070	Notice of Commencement to CIC	Finish On or Before	5	15-Dec-17 A	20-Dec-17 A	15-Dec-17 A	20-Dec-17 A			100%		
03-1080	CNP for Percussive Piling Works	As Late As Possible	90	12-Dec-21	11-Mar-22	12-Dec-21	11-Mar-22	17-Jul-21	15-Oct-21	-148	0%	
03-1090	EPD APCO (SP) License for Concrete Batching Plant	As Late As Possible	270	31-Aug-21	27-May-22	31-Aug-21	27-May-22	08-Apr-21	03-Jan-22	-145	0%	
03-1300	Prepare and Submit EP Application to Clause 1.38(6) of Spec A	Finish On or Before	7	15-Dec-17 A	21-Dec-17 A	15-Dec-17 A	21-Dec-17 A			100%		
03-1310(2)	Dumping Permit Application for Dredging Works		107	06-Nov-18 A	21-Feb-19 A	06-Nov-18 A	21-Feb-19 A			100%		
03-1360(1)	Marine Department Notification for Construction Works (Seawall)	Finish On or After	15	10-Jan-19 A	25-Jan-19 A	10-Jan-19 A	25-Jan-19 A			100%		
03-1360(2)	CNP for 24Hrs	Finish On	323	31-Mar-20	19-Jun-20	02-Aug-19 A	19-Jun-20*	30-Mar-20	18-Jun-20	-1	55.49%	
EP_SP_66_12-WP-3-M28.03.2 DG Licence												
EP_SP_66_12-WP-3-M28.03.2.1 Day Tank & Fuel Oil Storage (Cat 5)												
03-1400	Plans and FSI Provision Design Submission to FSD	As Late As Possible	21	23-Jun-23	13-Jul-23	23-Jun-23	13-Jul-23	15-Mar-23	05-Apr-23	-100	0%	
03-1410	DGD and VD Review and Approval of Submission	As Late As Possible	180	14-Jul-23	09-Jan-24	14-Jul-23	09-Jan-24	05-Apr-23	02-Oct-23	-100	0%	
EP_SP_66_12-WP-3-M28.03.2.1.1 IWMF Substation E Gen RM												
03-1420	DGD Compliance Inspection, Defects Rectification and Re-inspection		88	10-Jan-24	06-Apr-24	10-Jan-24	06-Apr-24	02-Oct-23	29-Dec-23	-100	0%	
03-1430	VD Compliance Inspection, Defects Rectification and Re-inspection		60	24-Jan-24	23-Mar-24	24-Jan-24	23-Mar-24	16-Oct-23	15-Dec-23	-100	0%	
03-1440	Issue of DG Licence		14	24-Mar-24	06-Apr-24	24-Mar-24	06-Apr-24	15-Dec-23	29-Dec-23	-100	0%	



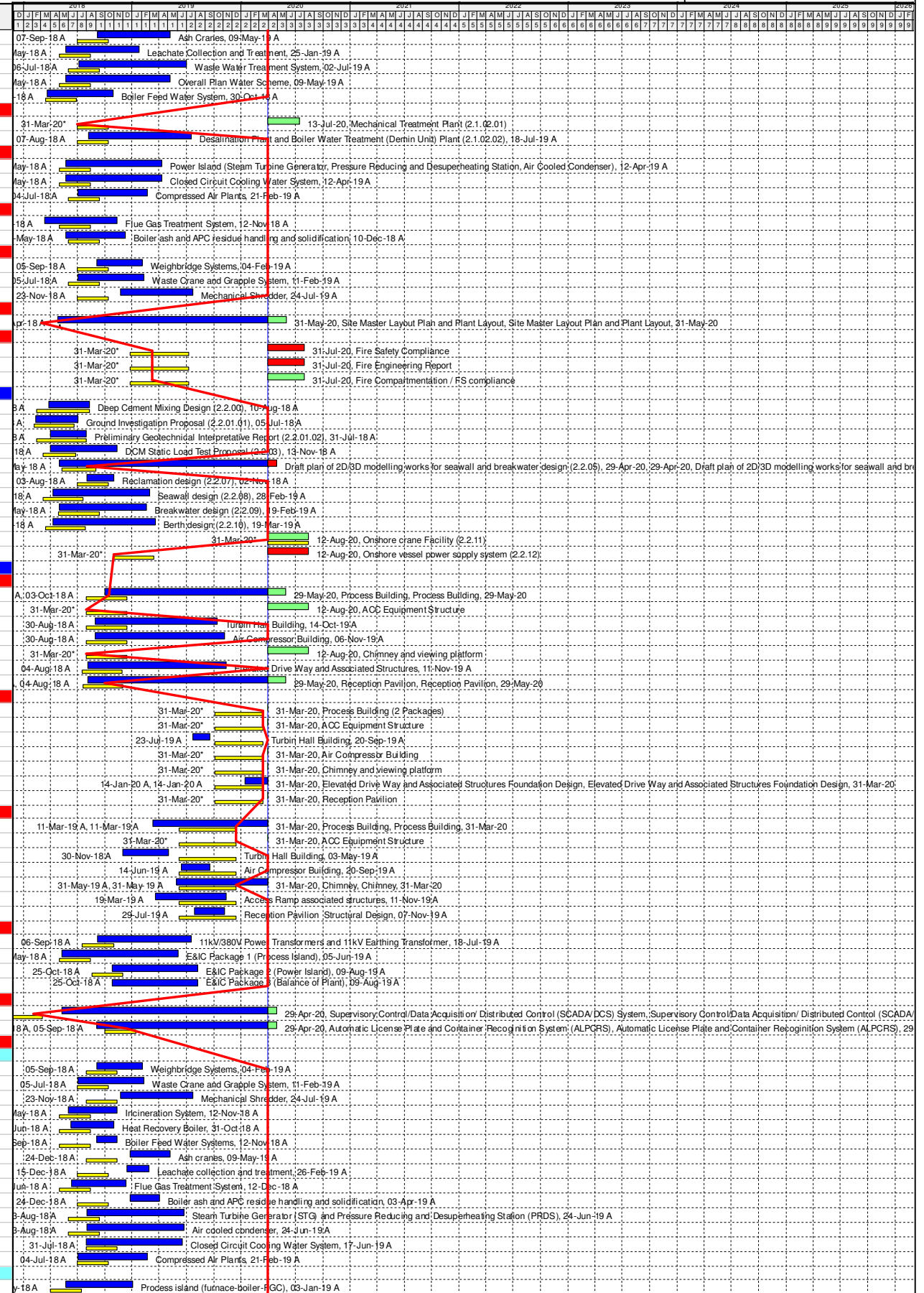
Programme for Design and Construction Works

March 2020 Update (Rev WP-3-M28)

Primary Baseline	Critical Remaining Work	Actual Milestone
Remaining Work	Baseline Milestone	Critical Milestone
Actual Work	WP3 BL Critical Milestone	
	Milestone	

Date	Revision	Checked	Approved
04/12/17	Rev. 0 - 1st Issue		
31-Jan-20	Rev 3 - Jan 2020 Update		
29-Feb-20	Rev 3 - Feb 2020 Update		
30-Mar-20	Rev 3 - Mar 2020 Update		

Activity ID	Activity Name	Primary Constraint	At Completion Duration	Current Start	Current Finish	Actual Start	Actual Finish	Latest Start	Latest Finish	Total Float	Activity % Complete	M28 Remarks
05-1020	Ash Cranes	Start On or After	244			07-Sep-18 A	09-May-19 A				100%	
05-1030	Leachate Collection and Treatment	Start On or After	245			25-May-18 A	25-Jan-19 A				100%	
05-1040	Waste Water Treatment System	Start On or After	361			06-Jul-18 A	02-Jul-19 A				100%	
05-1050	Overall Plan Water Scheme	Start On or After	350			24-May-18 A	09-May-19 A				100%	
05-1060	Boiler Feed Water System	Start On or After	223			21-Mar-18 A	30-Oct-18 A				100%	
EP_SP_66_12-WP-3-M28.05.01.01.2	MSW treatment process design for mechanical treatment (2.1.02)		707	31-Mar-20	13-Jul-20	07-Aug-18 A	13-Jul-20	02-May-20	15-Aug-20	32		
05-1090	Mechanical Treatment Plant (2.1.02.01)	Start On or After	105	31-Mar-20	13-Jul-20	31-Mar-20*	13-Jul-20	02-May-20	15-Aug-20	32	0%	
05-1100	Desalination Plant and Boiler Water Treatment (Demin Unit) Plant (2.1.02.02)	Start On or After	345			07-Aug-18 A	18-Jul-19 A				100%	
EP_SP_66_12-WP-3-M28.05.01.01.3	Waste heat recovery and Power generation system (2.1.03)		323			24-May-18 A	12-Apr-19 A					
05-1110	Power Island (Steam Turbine Generator, Pressure Reducing and Desuperheating Station, Air Cooled Cond)	Start On or After	323			24-May-18 A	12-Apr-19 A				100%	
05-1120	Closed Circuit Cooling Water System	Start On or After	323			24-May-18 A	12-Apr-19 A				100%	
05-1130	Compressed Air Plants	Start On or After	232			04-Jul-18 A	21-Feb-19 A				100%	
EP_SP_66_12-WP-3-M28.05.01.01.4	Flue gas treatment process design for incineration (2.1.04)		270			15-Mar-18 A	10-Dec-18 A					
05-1070	Flue Gas Treatment System	Start On or After	242			15-Mar-18 A	12-Nov-18 A				100%	
05-1080	Boiler ash and APC residue handling and solidification	Start On or After	199			25-May-18 A	10-Dec-18 A				100%	
EP_SP_66_12-WP-3-M28.05.01.01.5	Logistic arrangement design for MSW and Ash and Residues (2.1.05)		384			05-Jul-18 A	24-Jul-19 A					
05-1140	Weighbridge Systems	Start On or After	152			05-Sep-18 A	04-Feb-19 A				100%	
05-1150	Waste Crane and Grapple System	Start On or After	221			05-Jul-18 A	11-Feb-19 A				100%	
05-1160	Mechanical Shredder	Start On or After	243			23-Nov-18 A	24-Jul-19 A				100%	
EP_SP_66_12-WP-3-M28.05.01.01.6	Site Master Layout Plan and Plant Layout (2.1.06)		766	31-Mar-20	31-May-20	27-Apr-18 A	31-May-20	31-Dec-20	03-Mar-21	275		
05-3020	Site Master Layout Plan and Plant Layout		766	31-Mar-20	31-May-20	27-Apr-18 A	31-May-20	31-Dec-20	03-Mar-21	275	65%	
EP_SP_66_12-WP-3-M28.05.01.01.7	Statutory Fire Compliance (2.1.25)		123	31-Mar-20	31-Jul-20	31-Mar-20*	31-Jul-20	10-Apr-19	26-Feb-21	209		
05-2990	Fire Safety Compliance	Start On or After	123	31-Mar-20	31-Jul-20	31-Mar-20*	31-Jul-20	10-Apr-19	10-Aug-19	-356	0%	
05-3000	Fire Engineering Report	Start On or After	123	31-Mar-20	31-Jul-20	31-Mar-20*	31-Jul-20	10-Apr-19	10-Aug-19	-356	0%	
05-3010	Fire Compartmentation / FS compliance	Start On or After	123	31-Mar-20	31-Jul-20	31-Mar-20*	31-Jul-20	26-Oct-20	26-Feb-21	209	0%	
EP_SP_66_12-WP-3-M28.05.01.02	AIP Ground Treatment, Reclamation, Seawall, Breakwater, Berth (2.2)		913	31-Mar-20	12-Aug-20	12-Feb-18 A	12-Aug-20	26-Nov-19	20-Jul-21	341		
05-1170	Deep Cement Mixing Design (2.2.00)	Start On or After	136			27-Mar-18 A	10-Aug-18 A				100%	
05-1180	Ground Investigation Proposal (2.2.01.01)	Start On or After	143			12-Feb-18 A	05-Jul-18 A				100%	
05-1190	Preliminary Geotechnical Interpretative Report (2.2.01.02)	Start On or After	120			03-Apr-18 A	31-Jul-18 A				100%	
05-1200	DCM Static Load Test Proposal (2.2.03)	Start On or After	224			03-Apr-18 A	13-Nov-18 A				100%	
05-1280	Draft plan of 2D/3D modelling works for seawall and breakwater design (2.2.05)	Start On or After	728	31-Mar-20	29-Apr-20	03-May-18 A	29-Apr-20	26-Nov-19	26-Dec-19	-126	80%	
05-2930	Reclamation design (2.2.07)	Start On or After	91			03-Aug-18 A	02-Nov-18 A				100%	
05-2940	Seawall design (2.2.08)	Start On or After	323			11-Apr-18 A	28-Feb-19 A				100%	
05-2950	Breakwater design (2.2.09)	Start On or After	293			02-May-18 A	19-Feb-19 A				100%	
05-2960	Berth design (2.2.10)	Start On or After	342			11-Apr-18 A	19-Mar-19 A				70%	
05-2970	Onshore crane Facility (2.2.11)	Start On or After	135	31-Mar-20	12-Aug-20	31-Mar-20*	12-Aug-20	07-Mar-21	20-Jul-21	341	0%	
05-2980	Onshore vessel power supply system (2.2.12)	Start On or After	135	31-Mar-20	12-Aug-20	31-Mar-20*	12-Aug-20	15-Dec-19	28-Apr-20	-107	0%	
EP_SP_66_12-WP-3-M28.05.01.03	AIP Incineration Plant Buildings (2.3)		961	31-Mar-20	25-Dec-20	10-May-18 A	25-Dec-20	30-Aug-18	26-Jul-22	577		
EP_SP_66_12-WP-3-M28.05.01.03.1	Architectural Design (2.3.00)		740	31-Mar-20	12-Aug-20	04-Aug-18 A	12-Aug-20	15-Dec-20	12-Aug-21	364		
05-1210	Process Building	Start On or After	605	31-Mar-20	29-May-20	03-Oct-18 A	29-May-20	15-Dec-20	13-Feb-21	259	65%	
05-1220	ACC Equipment Structure	Start On or After	135	31-Mar-20	12-Aug-20	31-Mar-20*	12-Aug-20	16-Feb-21	01-Jul-21	322	0%	
05-1230	Turbin Hall Building	Start On or After	410			30-Aug-18 A	14-Oct-19 A				100%	
05-1240	Air Compressor Building	Start On or After	433			30-Aug-18 A	06-Nov-19 A				100%	
05-1250	Chimney and viewing platform	Start On or After	135	31-Mar-20	12-Aug-20	31-Mar-20*	12-Aug-20	28-Jan-21	12-Jun-21	303	0%	
05-1260	Elevated Drive Way and Associated Structures	Start On or After	464			04-Aug-18 A	11-Nov-19 A				100%	
05-1270	Reception Pavilion	Start On or After	665	31-Mar-20	29-May-20	04-Aug-18 A	29-May-20	13-Jun-21	12-Aug-21	439	65%	
EP_SP_66_12-WP-3-M28.05.01.03.2	Foundation design (2.3.01)		252	31-Mar-20	31-Mar-20	23-Jul-19 A	31-Mar-20	02-Jul-21	19-Jun-22	810		
05-3030	Process Building (2 Packages)	Start On or After	0	31-Mar-20	31-Mar-20	31-Mar-20*	31-Mar-20	02-Jul-21	02-Jul-21	458	0%	
05-3040	ACC Equipment Structure	Start On or After	0	31-Mar-20	31-Mar-20	31-Mar-20*	31-Mar-20	18-Oct-21	18-Oct-21	566	0%	
05-3050	Turbin Hall Building	Start On or After	59			23-Jul-19 A	20-Sep-19 A				100%	
05-3060	Air Compressor Building	Start On or After	0	31-Mar-20	31-Mar-20	31-Mar-20*	31-Mar-20	27-Jan-22	27-Jan-22	667	0%	
05-3070	Chimney and viewing platform	Start On or After	0	31-Mar-20	31-Mar-20	31-Mar-20*	31-Mar-20	29-Sep-21	29-Sep-21	547	0%	
05-3080	Elevated Drive Way and Associated Structures Foundation Design	Start On or After	77	31-Mar-20	31-Mar-20	14-Jan-20 A	31-Mar-20	06-Feb-22	06-Feb-22	677	45%	
05-3090	Reception Pavilion	Start On or After	0	31-Mar-20	31-Mar-20	31-Mar-20*	31-Mar-20	19-Jun-22	19-Jun-22	810	0%	
EP_SP_66_12-WP-3-M28.05.01.03.3	Structural design (2.3.02)		487	31-Mar-20	31-Mar-20	30-Nov-18 A	31-Mar-20	14-Nov-20	26-Jul-22	847		
05-1290	Process Building	Start On or After	386	31-Mar-20	31-Mar-20	11-Mar-19 A	31-Mar-20	20-Sep-21	20-Sep-21	538	5%	
05-1300	ACC Equipment Structure	Start On or After	0	31-Mar-20	31-Mar-20	31-Mar-20*	31-Mar-20	14-Nov-20	14-Nov-20	228	0%	
05-1310	Turbin Hall Building	Start On or After	154			30-Nov-18 A	03-May-19 A				100%	
05-1320	Air Compressor Building	Start On or After	98			14-Jun-19 A	20-Sep-19 A				100%	
05-1330	Chimney	Start On or After	305	31-Mar-20	31-Mar-20	31-May-19 A	31-Mar-20	26-Jul-22	26-Jul-22	847	5%	
05-1340	Access Ramp associated structures	Start On or After	237			19-Mar-19 A	11-Nov-19 A				100%	
05-1350	Reception Pavilion Structural Design	Start On or After	101			29-Jul-19 A	07-Nov-19 A				100%	
EP_SP_66_12-WP-3-M28.05.01.03.4	Electrical and Instrumentation works design (2.3.03)		456			10-May-18 A	09-Aug-19 A					
05-3150	11kV/380V Power Transformers and 11kV Earthing Transformer	Start On or After	315			06-Sep-18 A	18-Jul-19 A				100%	
05-3160	E&IC Package 1 (Process Island)	Start On or After	391			10-May-18 A	05-Jun-19 A				100%	
05-3170	E&IC Package 2 (Power Island)	Start On or After	288			25-Oct-18 A	09-Aug-19 A				100%	
05-3175(3)(M12)	E&IC Package 3 (Balance of Plant)	Start On or After	288			25-Oct-18 A	09-Aug-19 A				100%	
EP_SP_66_12-WP-3-M28.05.01.03.8	Operation Management System (2.3.03.04)		721	31-Mar-20	29-Apr-20	10-May-18 A	29-Apr-20	28-Apr-20	10-Sep-20	133		
05-3180	Supervisory Control/Data Acquisition/Distributed Control (SCADA/DCS) System	Start On or After	721	31-Mar-20	29-Apr-20	10-May-18 A	29-Apr-20	28-Apr-20	28-May-20	28	65%	
05-3210	Automatic License Plate and Container Recognition System (ALPCRS)	Start On or After	603	31-Mar-20	29-Apr-20	05-Sep-18 A	29-Apr-20	11-Aug-20	10-Sep-20	133	65%	
EP_SP_66_12-WP-3-M28.05.01.03.5	Mechanical works design (2.3.04)		433			17-May-18 A	24-Jul-19 A					
EP_SP_66_12-WP-3-M28.05.01.03.5.1	Plant and Equipment		419			31-May-18 A	24-Jul-19 A					
05-2800	Weighbridge Systems	Start On or After	152			05-Sep-18 A	04-Feb-19 A				100%	
05-2810	Waste Crane and Grapple System	Start On or After	221			05-Jul-18 A	11-Feb-19 A				100%	
05-2820	Mechanical Shredder	Start On or After	243			23-Nov-18 A	24-Jul-19 A				100%	
05-2830	Incineration System	Start On or After	165			31-May-18 A	12-Nov-18 A				100%	
05-2840	Heat Recovery Boiler	Start On or After	145			08-Jun-18 A	31-Oct-18 A				100%	
05-2850	Boiler Feed Water Systems	Start On or After	68			05-Sep-18 A	12-Nov-18 A				100%	
05-2860	Ash cranes	Start On or After	136			24-Dec-18 A	09-May-19 A				100%	
05-2870	Leachate collection and treatment	Start On or After	73			15-Dec-18 A	26-Feb-19 A				100%	
05-2880	Flue Gas Treatment System	Start On or After	184			11-Jun-18 A	12-Dec-18 A				100%	
05-2890	Boiler ash and APC residue handling and solidification	Start On or After	100			24-Dec-18 A	03-Apr-19 A				100%	
05-2900	Steam Turbine Generator (STG) and Pressure Reducing and Desuperheating Station (PRDS)	Start On or After	325			03-Aug-18 A	24-Jun-19 A				100%	
05-2910	Air cooled condenser	Start On or After	325			03-Aug-18 A	24-Jun-19 A				100%	
05-2915(3)	Closed Circuit Cooling Water System	Start On or After	321			31-Jul-18 A	17-Jun-19 A				100%	
05-2920	Compressed Air Plants	Start On or After	232			04-Jul-18 A	21-Feb-19 A				100%	
EP_SP_66_12-WP-3-M28.05.01.03.5.2	Process Pipeworks (Incl. Ductworks) and Valves		404			24-May-18 A	02-Jul-19 A					
05-1360	Process Island (furnace-boiler-FGC)	Start On or After	224			24-May-18 A	03-Jan-19 A				100%	



Programme for Design and Construction Works
 March 2020 Update (Rev WP-3-M28)

Primary Baseline	Critical Remaining Work	Actual Milestone
WP3 BL Critical Works	Baseline Milestone	Critical Milestone
Remaining Work	WP3 BL Critical Milestone	
Actual Work	Milestone	

Date	Revision
------	----------

Activity ID	Activity Name	Primary Constraint	At Completion Duration	Current Start	Current Finish	Actual Start	Actual Finish	Latest Start	Latest Finish	Total Float	Activity % Complete	M28 Remarks
05-1370	Pipebridge (Between Process Island & Turbine Hall)	Start On or After	404			24-May-18 A	02-Jul-19 A				100%	
05-1380	Compressed Air Plant area	Start On or After	273			02-Oct-18 A	02-Jul-19 A				100%	
05-1390	Pipebridge (Between CCGW Area & Turbine Hall)	Start On or After	119			02-Oct-18 A	29-Jan-19 A				100%	
05-1400	Pipebridge (Between Turbine Hall & ACC Yard)	Start On or After	119			02-Oct-18 A	29-Jan-19 A				100%	
05-1410	Turbine Hall	Start On or After	273			02-Oct-18 A	02-Jul-19 A				100%	
05-1420	ACC Yard	Start On or After	273			02-Oct-18 A	02-Jul-19 A				100%	
05-1540	CCGW Area	Start On or After	273			02-Oct-18 A	02-Jul-19 A				100%	
EP_SP_66_12-WP-3-M28.05.01.03.5.3 Process steel structure support (For equipment, piping & duct, cable tray etc)												
05-3100	Process island (furnace-boiler-FGC)	Start On or After	246			17-May-18 A	29-Jan-19 A				100%	
05-3110	Pipebridge (Between Process Island & Turbine Hall)	Start On or After	112			09-Oct-18 A	29-Jan-19 A				100%	
05-3120	Turbine Hall	Start On or After	112			09-Oct-18 A	29-Jan-19 A				100%	
05-3130	Pipebridge (Between CCGW Area & Turbine Hall)	Start On or After	112			09-Oct-18 A	29-Jan-19 A				100%	
05-3140	Pipebridge (Between Turbine Hall & ACC Yard)	Start On or After	112			09-Oct-18 A	29-Jan-19 A				100%	
EP_SP_66_12-WP-3-M28.05.01.03.5.4 Equipment and piping insulation												
05-1430	Incineration System	Start On or After	150			15-Jun-18 A	12-Nov-18 A				100%	
05-1440	Heat Recovery Boiler	Start On or After	138			15-Jun-18 A	31-Oct-18 A				100%	
05-1450	Boiler Feed Water Systems	Start On or After	150			15-Jun-18 A	12-Nov-18 A				100%	
05-1460	Flue Gas Treatment System	Start On or After	180			15-Jun-18 A	12-Dec-18 A				100%	
05-1470	Boiler ash and APC residue handling and solidification	Start On or After	292			15-Jun-18 A	03-Apr-19 A				100%	
05-1480	Steam Turbine Generator (STG) and Pressure Reducing and Desuperheating Station (PRDS)	Start On or After	181			11-Jan-19 A	11-Jul-19 A				100%	
05-1490	Air cooled condenser	Start On or After	251			02-Nov-18 A	11-Jul-19 A				100%	
05-1500	Closed Circuit Cooling Water System	Start On or After	321			31-Jul-18 A	17-Jun-19 A				100%	
EP_SP_66_12-WP-3-M28.05.01.03.6 Fire services installation design (2.3.05)												
EP_SP_66_12-WP-3-M28.05.01.03.6.1 Process Building (2.3.05.01)												
05-1510	Fire Systems	Finish On or Before	626	31-Mar-20	26-Sep-20	10-Jan-19 A	26-Sep-20	10-Apr-19	07-Oct-19	-355	5%	
05-1520	Fire engineering	Finish On or Before	569	01-Aug-20	01-Aug-20	10-Jan-19 A	01-Aug-20	07-Oct-19	07-Oct-19	-298	0%	
05-1530	FS schematics	Finish On or Before	180	31-Mar-20	26-Sep-20	10-Jan-19 A	26-Sep-20	10-Apr-19	06-Oct-19	-356	0%	
EP_SP_66_12-WP-3-M28.05.01.03.6.2 Turbin Hall Building (2.3.05.03)												
05-5400	Fire Systems (2.3.05.03.01)	Finish On or Before	453	31-Mar-20	06-Apr-20	10-Jan-19 A	06-Apr-20	01-Oct-19	07-Oct-19	-182	5%	
05-5410 (M2)	Fire engineering	Finish On or Before	729	31-Mar-20	25-Dec-20	28-Dec-18 A	25-Dec-20	17-Apr-19	11-Jan-20	-349	0%	
05-5420 (M2)	FS schematics (2.3.05.03.03)	Finish On or Before	564	31-Mar-20	13-Jul-20	28-Dec-18 A	13-Jul-20	22-Jun-19	04-Oct-19	-283	25%	
EP_SP_66_12-WP-3-M28.05.01.03.6.4 Air Compressor Building (2.3.05.04)												
05-5430 (M2)	Fire Systems	Finish On or Before	270	31-Mar-20	25-Dec-20	31-Mar-20	25-Dec-20	30-Aug-18	26-May-19	-579	0%	
05-5440 (M2)	FS schematics	Finish On or Before	270	31-Mar-20	25-Dec-20	31-Mar-20	25-Dec-20	30-Aug-18	26-May-19	-579	0%	
EP_SP_66_12-WP-3-M28.05.01.03.6.5 Elevated Drive Way and Associated Structures (2.3.05.05)												
05-5445 (M2)	Fire Systems	Finish On or Before	255	31-Mar-20	26-Aug-20	16-Dec-19 A	26-Aug-20	29-Oct-19	25-Mar-20	-154	5%	
05-5450 (M2)	FS schematics	Finish On or Before	255	31-Mar-20	26-Aug-20	16-Dec-19 A	26-Aug-20	29-Oct-19	25-Mar-20	-154	5%	
EP_SP_66_12-WP-3-M28.05.01.03.6.6 Reception Pavilion (2.3.05.06)												
05-5460 (M2)	Fire Systems (2.3.05.06.01)	Finish On or Before	357	31-Mar-20	24-Sep-20	04-Oct-19 A	24-Sep-20	16-Dec-19	10-Jun-20	-106	5%	
05-5470 (M2)	FS schematics (2.3.05.06.03)	Finish On or Before	357	31-Mar-20	24-Sep-20	04-Oct-19 A	24-Sep-20	16-Dec-19	10-Jun-20	-106	5%	
EP_SP_66_12-WP-3-M28.05.01.03.6.7 Compressor & Closed Circuit (2.3.05.07)												
05-5480 (M2)	Fire Systems (2.3.05.07.01)	Finish On or Before	307	31-Mar-20	13-Jul-20	11-Sep-19 A	13-Jul-20	13-Oct-19	25-Jan-20	-170	45%	
05-5490 (M2)	FS schematics (2.3.05.07.03)	Finish On or Before	307	31-Mar-20	13-Jul-20	11-Sep-19 A	13-Jul-20	13-Oct-19	25-Jan-20	-170	45%	
EP_SP_66_12-WP-3-M28.05.01.03.7 Building services design (excluding fire services installation design) (2.3.05)												
05-1550	Electrical Services and Lighting (7 Packages)	Start On or After	774	31-Mar-20	12-Aug-20	11-Jul-18 A	12-Aug-20	19-May-20	29-Apr-21	259	12.5%	
05-1560	MVAC (6 Packages)	Start On or After	564	31-Mar-20	09-Aug-20	10-Jan-19 A	09-Aug-20	23-Jul-20	02-Dec-20	115	5%	
05-1570	Odour Control	Start On or After	476	31-Mar-20	29-Apr-20	10-Jan-19 A	29-Apr-20	12-Oct-20	11-Nov-20	195	5%	
05-1580	Plumbing (7 Packages)	Start On or After	719	31-Mar-20	28-Jun-20	11-Jul-18 A	28-Jun-20	13-Aug-20	11-Nov-20	135	5%	
05-1590	Drainage (7 Packages)	Start On or After	441	31-Mar-20	31-Mar-20	15-Jan-19 A	31-Mar-20	16-Nov-20	16-Nov-20	230	5%	
05-1600	ELV (7 Packages)	Start On or After	531	31-Mar-20	28-Jun-20	15-Jan-19 A	28-Jun-20	18-Aug-20	16-Nov-20	140	5%	
05-1610	Lifts and Escalators (2 Packages)	Start On or After	536	31-Mar-20	28-Jun-20	10-Jan-19 A	28-Jun-20	17-Nov-20	15-Feb-21	231	5%	
05-1630	Building Management System (BMS) (7 Packages)	Start On or After	227	31-Mar-20	12-Aug-20	30-Dec-19 A	12-Aug-20	04-Jun-20	17-Oct-20	65	5%	
05-1770	Vehicle & Container Wash System	Start On or After	135	31-Mar-20	12-Aug-20	31-Mar-20	12-Aug-20	19-May-20	30-Sep-20	49	0%	
05-1770-1(M2)	Water Cannon System	Start On or After	135	31-Mar-20	12-Aug-20	31-Mar-20	12-Aug-20	01-Oct-20	13-Feb-21	184	0%	
05-1770-1(M2)	Water Cannon System	Start On or After	294	31-Mar-20	31-Mar-20	11-Jun-19 A	31-Mar-20	29-Apr-21	29-Apr-21	394	5%	
EP_SP_66_12-WP-3-M28.05.01.04 AIP Mechanical Treatment Plant Building (2.4)												
05-1640	Architectural Design (2.4.00)	Start On or After	631	31-Mar-20	29-May-20	07-Sep-18 A	29-May-20	22-Nov-20	21-Jan-21	236	65%	
05-1650	Foundation design (2.4.01)	Start On or After	268	31-Mar-20	31-Mar-20	07-Jul-19 A	31-Mar-20	25-Oct-21	25-Oct-21	573	65%	
05-1660	Structural design (2.4.02)	Start On or After	206	31-Mar-20	13-Jul-20	21-May-19 A	13-Dec-19 A				100%	
05-1670	Electrical and instrumentation works design (2.4.03)	Start On or After	105	31-Mar-20	13-Jul-20	31-Mar-20	13-Jul-20	14-Jul-20	27-Oct-20	105	0%	
05-1680	Mechanical works design (2.4.04)	Start On or After	105	31-Mar-20	13-Jul-20	31-Mar-20	13-Jul-20	19-Nov-19	03-Mar-20	-133	0%	
05-1690	Fire services installation design (2.4.05) (3 Packages)	Start On or After	472	31-Mar-20	04-Jul-20	20-Mar-19 A	04-Jul-20	31-Jan-21	06-May-21	306	9.5%	
EP_SP_66_12-WP-3-M28.05.01.04.7 Building services design (excluding fire services installation design) (2.4.06)												
05-1700	Electrical Services and Lighting (2.4.06.01)	Start On or After	512	31-Mar-20	12-Aug-20	20-Mar-19 A	12-Aug-20	15-Apr-20	15-May-21	275	5%	
05-1710	MVAC	Start On or After	377	31-Mar-20	31-Mar-20	20-Mar-19 A	31-Mar-20	02-Dec-20	02-Dec-20	246	5%	
05-1720	Odour Control	Start On or After	507	31-Mar-20	12-Aug-20	25-Mar-19 A	12-Aug-20	15-Apr-20	28-Aug-20	15	5%	
05-1730	Plumbing	Start On or After	135	31-Mar-20	12-Aug-20	31-Mar-20	12-Aug-20	15-Apr-20	28-Aug-20	15	0%	
05-1740	Drainage	Start On or After	512	31-Mar-20	12-Aug-20	20-Mar-19 A	12-Aug-20	04-Jul-20	16-Nov-20	95	5%	
05-1750	ELV	Start On or After	512	31-Mar-20	12-Aug-20	20-Mar-19 A	12-Aug-20	04-Jul-20	16-Nov-20	95	5%	
05-1760	Lifts and Escalators	Start On or After	227	31-Mar-20	12-Aug-20	20-Mar-19 A	12-Aug-20	20-Jul-20	02-Dec-20	111	5%	
05-1760-1(M2)	Building Management System (BMS)	Start On or After	227	31-Mar-20	12-Aug-20	30-Dec-19 A	12-Aug-20	31-Dec-20	15-May-21	275	5%	
05-1760-1(M2)	Building Management System (BMS)	Start On or After	89	31-Mar-20	27-Jun-20	31-Mar-20	27-Jun-20	04-Jul-20	30-Sep-20	95	0%	
EP_SP_66_12-WP-3-M28.05.01.05 AIP Wastewater Treatment Plant (2.5)												
05-1780	Architectural Design (2.5.00)	Start On or After	715	31-Mar-20	16-Sep-20	03-Oct-18 A	16-Sep-20	15-Apr-20	04-Jul-21	230	65%	
05-1790	Foundation design (2.5.01)	Start On or After	605	31-Mar-20	29-May-20	03-Oct-18 A	29-May-20	26-Dec-20	24-Feb-21	270	65%	
05-1800	Structural design (2.5.02)	Start On or After	0	31-Mar-20	31-Mar-20	31-Mar-20	31-Mar-20	04-Jul-21	04-Jul-21	460	0%	
05-1810	Electrical and instrumentation works design (2.5.03)	Start On or After	556	31-Mar-20	16-Sep-20	11-Mar-19 A	16-Sep-20	30-May-20	16-Nov-20	60	45%	
05-1820	Mechanical works design (2.5.04)	Start On or After	289	31-Mar-20	16-Sep-20	24-Oct-18 A	09-Aug-19 A				100%	
05-2790	Fire services installation design (2.5.05)	Start On or After	282	31-Mar-20	16-Sep-20	03-Oct-18 A	12-Jul-19 A				100%	
EP_SP_66_12-WP-3-M28.05.01.05.7 Building services design (excluding fire services installation design) (2.5.06)												
05-1830	Electrical Services and Lighting for Wastewater Treatment Plant Building (2.5.06.01)	Start On or After	530	31-Mar-20	28-Jun-20	16-Jan-19 A	28-Jun-20	05-Feb-21	06-May-21	311	5%	
05-1840	MVAC (2.5.06.02)	Start On or After	470	31-Mar-20	29-Apr-20	16-Jan-19 A	29-Apr-20	02-Nov-20	02-Dec-20	216	25%	
05-1850	Odour Control (2.5.06.03)	Start On or After	560	31-Mar-20	28-Jul-20	16-Jan-19 A	28-Jul-20	30-Apr-20	28-Aug-20	30	25%	
05-1860	Plumbing (2.5.06.04)	Start On or After	135	31-Mar-20	12-Aug-20	31-Mar-20	12-Aug-20	15-Apr-20	28-Aug-20	15	0%	
05-1870	Drainage (2.5.06.05)	Start On or After	560	31-Mar-20	28-Jul-20	16-Jan-19 A	28-Jul-20	19-Jul-20	16-Nov-20	110	25%	
05-1880	ELV (2.5.06.06)	Start On or After	560	31-Mar-20	28-Jul-20	16-Jan-19 A	28-Jul-20	04-Aug-20	02-Dec-20	126	25%	
EP_SP_66_12-WP-3-M28.05.01.06 AIP Desalination Plant Building (2.6)												
05-1900	Architectural Design (2.6.00)	Start On or After	706	31-Mar-20	12-Aug-20	07-Sep-18 A	12-Aug-20	15-Apr-20	25-Sep-21	408	65%	
05-1910	Foundation design (2.6.01)	Start On or After	631	31-Mar-20	29-May-20	07-Sep-18 A	29-May-20	22-Nov-20	21-Jan-21	236	65%	

Primary Baseline	Critical Remaining Work	Actual Milestone
WP3 BL Critical Works	Baseline Milestone	Critical Milestone
Remaining Work	WP3 BL Critical Milestone	
Actual Work	Milestone	

Date	Revision	Checked	Approved
04/12/17	Rev. 0 - 1st Issue		
31-Jan-20	Rev 3 - Jan 2020 Update		
29-Feb-20	Rev 3 - Feb 2020 Update		
30-Mar-20	Rev 3 - Mar 2020 Update		

Activity ID	Activity Name	Primary Constraint	At Completion Duration	Current Start	Current Finish	Actual Start	Actual Finish	Latest Start	Latest Finish	Total Float	Activity % Complete	M28 Remarks
05-1920	Structural design (2.6.02)	Start On or After	206			21-May-19 A	13-Dec-19 A				100%	
05-1930	Electrical and instrumentation works design (2.6.03)	Start On or After	289			24-Oct-18 A	09-Aug-19 A				100%	
05-1940	Mechanical works design (2.6.04)	Start On or After	195			30-Nov-18 A	13-Jun-19 A				100%	
05-1950	Fire services installation design (2.6.05) (3 Packages)	Start On or After	462	31-Mar-20	24-Jun-20	20-Mar-19 A	24-Jun-20	09-Feb-21	06-May-21	316	19%	
EP_SP_66_12-WP-3-M28.05.01.06.7 Building services design (excluding fire services installation design) (2.6.06)												
05-1960	Electrical Services and Lighting (2.6.06.01)	Start On or After	512	31-Mar-20	12-Aug-20	20-Mar-19 A	12-Aug-20	15-Apr-20	02-Dec-20	111	5%	
05-1970	MVAC	Start On or After	507	31-Mar-20	12-Aug-20	25-Mar-19 A	12-Aug-20	15-Apr-20	28-Aug-20	15	5%	
05-1980	Odour Control	Start On or After	135	31-Mar-20	12-Aug-20	31-Mar-20*	12-Aug-20	15-Apr-20	28-Aug-20	15	0%	
05-1990	Plumbing	Start On or After	512	31-Mar-20	12-Aug-20	20-Mar-19 A	12-Aug-20	04-Jul-20	16-Nov-20	95	5%	
05-2000	Drainage	Start On or After	512	31-Mar-20	12-Aug-20	20-Mar-19 A	12-Aug-20	04-Jul-20	16-Nov-20	95	5%	
05-2010	ELV	Start On or After	512	31-Mar-20	12-Aug-20	20-Mar-19 A	12-Aug-20	20-Jul-20	02-Dec-20	111	5%	
EP_SP_66_12-WP-3-M28.05.01.07 AIP Administration Building (2.7)												
05-2020	Architectural Design (2.7.00)	Start On or After	666	31-Mar-20	29-May-20	03-Aug-18 A	29-May-20	23-Oct-20	22-Dec-20	206	65%	
05-2030	Foundation design (2.7.01)	Start On or After	142			30-Sep-19 A	19-Feb-20 A				100%	
05-2040	Structural design (2.7.02)	Start On or After	446	31-Mar-20	16-Oct-20	29-Jul-19 A	16-Oct-20	09-Oct-21	27-Apr-22	557	65%	
05-2050	Electrical and instrumentation works design (2.7.03)	Start On or After	135	31-Mar-20	12-Aug-20	31-Mar-20*	12-Aug-20	04-Oct-20	16-Feb-21	187	0%	
05-2060	Fire services installation design (3 Packages) (2.7.04)	Start On or After	332	31-Mar-20	31-Jul-20	03-Sep-19 A	31-Jul-20	04-Dec-20	06-Apr-21	249	9.5%	
EP_SP_66_12-WP-3-M28.05.01.07.6 Building services design (excluding fire services installation design) (2.7.05)												
05-2070	Electrical Services and Lighting (2.7.05.01)	Start On or After	345	31-Mar-20	12-Aug-20	03-Sep-19 A	12-Aug-20	15-Apr-20	02-Dec-20	111	5%	
05-2080	MVAC	Start On or After	345	31-Mar-20	12-Aug-20	03-Sep-19 A	12-Aug-20	15-Apr-20	28-Aug-20	15	5%	
05-2090	Odour Control	Start On or After	135	31-Mar-20	12-Aug-20	31-Mar-20*	12-Aug-20	15-Apr-20	28-Aug-20	15	0%	
05-2100	Plumbing	Start On or After	345	31-Mar-20	12-Aug-20	03-Sep-19 A	12-Aug-20	04-Jul-20	16-Nov-20	95	5%	
05-2110	Drainage	Start On or After	345	31-Mar-20	12-Aug-20	03-Sep-19 A	12-Aug-20	04-Jul-20	16-Nov-20	95	5%	
05-2120	ELV	Start On or After	345	31-Mar-20	12-Aug-20	03-Sep-19 A	12-Aug-20	20-Jul-20	02-Dec-20	111	5%	
05-2130	Lifts and Escalators	Start On or After	227	31-Mar-20	12-Aug-20	30-Dec-19 A	12-Aug-20	04-Jun-20	17-Oct-20	65	5%	
05-2130-1(M20)	Building Management System (BMS)	Start On or After	89	31-Mar-20	27-Jun-20	31-Mar-20*	27-Jun-20	04-Jul-20	30-Sep-20	95	0%	
EP_SP_66_12-WP-3-M28.05.01.08 AIP IWMF Substation (2.8)												
05-2140	Architectural Design (2.8.00)	Start On or After	437			03-Aug-18 A	14-Oct-19 A				100%	
05-2150	Foundation design (2.8.01)	Start On or After	124			17-May-19 A	18-Sep-19 A				100%	
05-2160	Structural design (2.8.02)	Start On or After	168			31-Oct-18 A	17-Apr-19 A				100%	
05-2170	Electrical and instrumentation works design (2.8.03) (14 Packages)	Start On or After	245	31-Mar-20	25-Jun-20	25-Oct-19 A	25-Jun-20	02-Jul-20	27-Sep-20	93	51.67%	
05-2180	Mechanical works design (2.8.04)	Start On or After	135	31-Mar-20	12-Aug-20	31-Mar-20*	12-Aug-20	01-Mar-20	14-Jul-20	-30	0%	
05-2190	Fire services installation design (2.8.05) (2 Packages)	Start On or After	612	31-Mar-20	30-Jul-20	27-Nov-18 A	30-Jul-20	21-Sep-20	21-Jan-21	174	28.5%	
EP_SP_66_12-WP-3-M28.05.01.08.7 Building services design (excluding fire services installation design) (2.8.06)												
05-2200	Electrical Services and Lighting (2.8.06.01)	Start On or After	591	31-Mar-20	09-Jul-20	27-Nov-18 A	09-Jul-20	19-May-20	02-Dec-20	145	36%	
05-2210	MVAC	Start On or After	576	31-Mar-20	25-Jun-20	27-Nov-18 A	25-Jun-20	06-Sep-20	02-Dec-20	160	36%	
05-2220	Plumbing	Start On or After	591	31-Mar-20	09-Jul-20	27-Nov-18 A	09-Jul-20	19-May-20	28-Aug-20	49	65%	
05-2230	Drainage	Start On or After	387	31-Mar-20	09-Jul-20	27-Nov-18 A	09-Jul-20	07-Aug-20	16-Nov-20	129	65%	
05-2240	ELV	Start On or After	580	31-Mar-20	28-Jun-20	27-Nov-18 A	28-Jun-20	03-Sep-20	02-Dec-20	156	65%	
05-2240-1(M20)	Building Management System (BMS)	Start On or After	89	31-Mar-20	27-Jun-20	31-Mar-20*	27-Jun-20	03-Jul-20	29-Sep-20	94	0%	
EP_SP_66_12-WP-3-M28.05.01.09 AIP Air Quality Monitoring Stations (2.9)												
05-2250	Design of the Air Quality Monitoring Stations (2.9.01)	Start On or After	120	31-Mar-20	28-Jul-20	31-Mar-20*	28-Jul-20	06-Jul-20	03-Nov-20	97	0%	
EP_SP_66_12-WP-3-M28.05.01.10 AIP Roads and Utilities (2.10)												
EP_SP_66_12-WP-3-M28.05.01.10.1 Permanent road works layout on the Artificial Island (2.10.01)												
05-2260	Roads and hardstandings layout	Start On or After	135	17-Dec-20	30-Apr-21	17-Dec-20*	30-Apr-21	26-Aug-22	07-Jun-23	767	0%	
05-2270	Road signage and markings	Start On or After	135	17-Dec-20	30-Apr-21	17-Dec-20*	30-Apr-21	23-Jan-23	07-Jun-23	767	0%	
EP_SP_66_12-WP-3-M28.05.01.10.2 Sewerage design on the Artificial Island (2.10.02)												
05-2280	Foul Sewerage concept sizing	Start On or After	330	31-Mar-20	12-Aug-20	18-Sep-19 A	12-Aug-20	03-Aug-20	30-Jan-22	535	65%	
05-2290	Contaminated Sewerage concept / sizing	Start On or After	330	31-Mar-20	12-Aug-20	18-Sep-19 A	12-Aug-20	17-Sep-21	30-Jan-22	535	65%	
EP_SP_66_12-WP-3-M28.05.01.10.3 Drainage system design on the Artificial Island (2.10.03)												
05-2300	Surface Water Drainage System concept / sizing	Start On or After	449	31-Mar-20	12-Aug-20	22-May-19 A	12-Aug-20	03-Aug-20	16-Dec-20	125	65%	
05-2310	First Flush Drainage System concept / sizing	Start On or After	449	31-Mar-20	12-Aug-20	22-May-19 A	12-Aug-20	21-Nov-20	05-Apr-21	235	65%	
EP_SP_66_12-WP-3-M28.05.01.10.4 Water supply system design on the Artificial Island (2.10.04)												
05-2320	Potable Water Distribution System (2.10.04.01)	Start On or After	349	31-Mar-20	12-Aug-20	30-Aug-19 A	12-Aug-20	30-Nov-19	01-Mar-22	565	5%	
05-2330	Recycled Water System (2.10.04.02)	Start On or After	272	31-Mar-20	12-Aug-20	14-Nov-19 A	12-Aug-20	28-Aug-21	10-Jan-22	515	5%	
05-2340	Irrigation System (2 Packages) (2.10.04.03)	Start On or After	135	31-Mar-20	12-Aug-20	31-Mar-20*	12-Aug-20	03-Aug-20	16-Dec-20	125	0%	
05-2350	Rainwater harvesting System (2.10.04.04)	Start On or After	135	31-Mar-20	12-Aug-20	31-Mar-20*	12-Aug-20	03-Aug-20	16-Dec-20	125	0%	
05-2360	Water Tanks (2.10.04.05)	Start On or After	135	31-Mar-20	12-Aug-20	31-Mar-20*	12-Aug-20	17-Oct-21	01-Mar-22	565	0%	
05-2370	External FS Systems (2.10.04.06)	Start On or After	283	31-Mar-20	12-Aug-20	04-Nov-19 A	12-Aug-20	17-Oct-21	01-Mar-22	565	5%	
05-2370-1(M24)	E&M system for seawater intake and brine discharge (2.10.04.07)	Finish On or Before	307	31-Mar-20	01-Jul-20	30-Aug-19 A	01-Jul-20*	30-Nov-19	01-Mar-20	-122	5%	
05-2370-2(M24)	Building Services system for seawater intake and brine discharge (2.10.04.09)	Finish On or Before	88	31-Mar-20	26-Jun-20	31-Mar-20	26-Jun-20*	30-Nov-19	25-Feb-20	-122	0%	
EP_SP_66_12-WP-3-M28.05.01.10.6 Design of telecommunication and other utilities (2.10.06)												
05-2380	Power Distribution System concept / schematics	Start On or After	135	31-Mar-20	12-Aug-20	31-Mar-20*	12-Aug-20	31-Dec-20	15-May-21	275	0%	
05-2390	Site Lighting Concept / Schematics	Start On or After	239	31-Mar-20	12-Aug-20	18-Dec-19 A	12-Aug-20	26-Jan-20	09-Jun-20	-65	5%	
05-2400	Lightning Protection System concept / schematics	Start On or After	239	31-Mar-20	12-Aug-20	18-Dec-19 A	12-Aug-20	13-Aug-20	26-Dec-20	135	5%	
05-2410	Site ELV Network System - Communications System concept / schematics	Start On or After	135	31-Mar-20	12-Aug-20	31-Mar-20*	12-Aug-20	31-Dec-20	15-May-21	275	0%	
05-2420	Site ELV Network System - Security Systems concept / schematics	Start On or After	135	31-Mar-20	12-Aug-20	31-Mar-20*	12-Aug-20	31-Dec-20	15-May-21	275	0%	
05-2430	Site ELV Network System - Navigation aids concept / schematics	Start On or After	135	31-Mar-20	12-Aug-20	31-Mar-20*	12-Aug-20	31-Dec-20	15-May-21	275	0%	
05-2440	Microwave transmission of FS direct link (2.10.06.07)	Start On or After	580	31-Mar-20	28-Jun-20	27-Nov-18 A	28-Jun-20	14-Feb-21	15-May-21	320	45%	
05-2450	Fuel Handling System concept / schematics (2.10.06.08)	Start On or After	202	31-Mar-20	12-Aug-20	24-Jan-20 A	12-Aug-20	10-Sep-22	23-Jan-23	893	0%	
05-3190	Computerised Maintenance Management System (CMMS)	Start On or After	380	31-Mar-20	13-Jul-20	30-Jun-19 A	13-Jul-20	28-May-20	10-Sep-20	58	0%	
05-3200	Information and Document Management System (IDMS)	Start On or After	448	31-Mar-20	13-Jul-20	23-Apr-19 A	13-Jul-20	28-May-20	10-Sep-20	58	0%	
05-3840 (M22)	Automatic Traffic Control System (ATCS)	Start On	300	31-Mar-20	24-Jan-21	31-Mar-20*	24-Jan-21	18-Dec-19	12-Oct-20	-104	0%	
EP_SP_66_12-WP-3-M28.05.01.10.7 Utility ducts/Pipebridges design (2.10.25)												
05-2460	Design of Pipe / Utilities Trenches concept	Start On or After	135	30-May-21	11-Oct-21	30-May-21*	11-Oct-21	19-Dec-22	03-May-23	568	0%	
05-2470	Utility ducts network	Start On or After	135	31-Mar-20	12-Aug-20	31-Mar-20*	12-Aug-20	19-Apr-20	01-Sep-20	19	0%	
05-2480	Pipebridge network - Layout	Start On or After	120	31-Mar-20	28-Jul-20	31-Mar-20*	28-Jul-20	04-May-20	01-Sep-20	34	0%	
05-2490	Pipebridge network - Foundation Plan	Start On or After	135	31-Mar-20	12-Aug-20	31-Mar-20*	12-Aug-20	19-Apr-20	01-Sep-20	19	0%	
05-2500	Pipebridge network - Structure Plan	Start On or After	135	31-Mar-20	12-Aug-20	31-Mar-20*	12-Aug-20	19-Apr-20	01-Sep-20	19	0%	
EP_SP_66_12-WP-3-M28.05.01.11 AIP Architectural, Finishes and Landscaping Works (2.11)												
EP_SP_66_12-WP-3-M28.05.01.11.1 External and internal finishes design for Incineration Plant Buildings (2.11.01)												
05-2510	External and internal finishes design for Incineration Plant Building (6 Packages)	Start On or After	137	31-Mar-20	14-Aug-20	31-Mar-20*	14-Aug-20	28-Jun-21	12-Nov-21	454	0%	
05-2520	External and internal finishes design for ACC Equipment Structure	Start On or After	137	31-Mar-20	14-Aug-20	31-Mar-20*	14-Aug-20	28-Jun-21	12-Nov-21	454	0%	
05-2530	External and internal finishes design for Turbine Hall Building (3 Packages)	Start On or After	137	31-Mar-20	14-Aug-20	31-Mar-20*	14-Aug-20	26-Sep-21	10-Feb-22	544	0%	
05-2540	External and internal finishes design for Air Compressor Building (3 Packages)	Start On or After	137	31-Mar-20	14-Aug-20	31-Mar-20*	14-Aug-20	24-Aug-21	08-Jan-22	511	0%	
05-2550	External and internal finishes design for Chimney (6 Packages)	Start On or After	137	31-Mar-20	14-Aug-20	31-Mar-20*	14-Aug-20	27-Aug-21	11-Jan-22	514	0%	
05-2560	External and internal finishes design for Reception Pavilion (5 Packages)	Start On or After	137	31-Mar-20	14-Aug-20	31-Mar-20*	14-Aug-20	27-Aug-21	11-Jan-22	514	0%	
EP_SP_66_12-WP-3-M28.05.01.11.2 External and internal finishes design for MT Plant Building (2.11.02)												
05-2570	External and internal finishes design for MT Plant Building (2.11.02)	Start On or After	136	31-Mar-20	13-Aug-20	31-Mar-20	13-Aug-20	13-Jun-21	27-Oct-21	439	0%	

Date	Revision	Checked	Approved
04/12/17	Rev. 0 - 1st Issue		
31-Jan-20	Rev 3 - Jan 2020 Update		
29-Feb-20	Rev 3 - Feb 2020 Update		
30-Mar-20	Rev 3 - Mar 2020 Update		

Primary Baseline	Critical Remaining Work</
------------------	---------------------------

Activity ID	Activity Name	Primary Constraint	At Completion Duration	Current Start	Current Finish	Actual Start	Actual Finish	Latest Start	Latest Finish	Total Float	Activity % Complete	M28 Remarks	2017	2018	2019	2020	2021	2022	2023	2024	2025
08-1040-46(3)	Pre-construction Site Trial Report Submission		247			06-Dec-18 A	10-Aug-19 A				100%										
08-1040-47(3)	Plant Trial Report Submission		136			27-Mar-19 A	10-Aug-19 A				100%										
EP_SP_66_12-WP-3-M28.08.1.1.1.3	DCM Static Load Test		373			02-Aug-18 A	10-Aug-19 A														
08-1050-01(1)(A)	Lay Geotextile and Sand Blanket		7			02-Aug-18 A	09-Aug-18 A				100%										
08-1050-02(1)(A)	DCM installation for load test		26			11-Sep-18 A	06-Oct-18 A				100%										
08-1050-03(1)(A)	Coring for proof test		33			07-Oct-18 A	08-Nov-18 A				100%										
08-1050-04(1)(A)	Carry UCS test and issue preliminary report		32			09-Oct-18 A	09-Nov-18 A				100%										
08-1050-04-1(3)	Post CPT for installed DCM (13nr)		24			27-Dec-18 A	28-Feb-19 A				100%										
08-1050-04-2(3)	Additional DCM Installation for failed clusters (3 nr)		0			13-Feb-19 A	13-Feb-19 A				100%										
08-1050-05(1)(A)	Construction of Rockfill Rubble Mound (include heaving treatment)		12			28-Feb-19 A	12-Mar-19 A				100%										
08-1050-06(1)(A)	Instrumentation installation		72			20-Mar-19 A	31-May-19 A				100%										
08-1050-08(1)(A)	Loading PC Blocks to +9.8mPD		8			01-Jun-19 A	09-Jun-19 A				100%										
08-1050-09(1)(A)	7 days Monitoring		7			10-Jun-19 A	17-Jun-19 A				100%										
08-1050-10(1)(A)	Loading PC Blocks to +11.15mPD		6			18-Jun-19 A	24-Jun-19 A				100%										
08-1050-11(1)(A)	3 days Monitoring		3			25-Jun-19 A	28-Jun-19 A				100%										
08-1050-12(1)(A)	Unloading PC Blocks		31			30-Jun-19 A	31-Jul-19 A				100%										
08-1050-13(1)(A)	Coring for Instrumentation (9 Holes)		64			14-Mar-19 A	31-May-19 A				100%										
08-1065(2)	Static load test report submission		42			29-Jun-19 A	10-Aug-19 A				100%										
EP_SP_66_12-WP-3-M28.08.1.1.4	DCM Injection Works		512			29-Sep-18 A	23-Feb-20 A														
08-1070	Geotextile Laying		152			29-Sep-18 A	28-Feb-19 A				100%										
08-1075(2)	Sand Blanket Laying		216			29-Sep-18 A	03-May-19 A				100%										
08-1080	DCM Injection Works (575,000m3, approx 6491 nr.)		374			10-Dec-18 A	19-Dec-19 A				100%										
08-1090	DCM Final Completion Tests		380			08-Feb-19 A	23-Feb-20 A				100%										
EP_SP_66_12-WP-3-M28.08.1.1.5	Seawall Structural Works		1094	31-Mar-20	27-Jan-22	30-Jan-19 A	27-Jan-22	04-Nov-19	03-Jan-22	-25											
08-1100	Rubble Mound Laying (100,000m3 approx, @550m3/d)		323	31-Mar-20	14-May-20	27-Jun-19 A	14-May-20	26-Nov-19	10-Jan-20	-126	75.27%										
08-1105(1)	Prefabrication for Caisson (Inc. preparation works)		508	31-Mar-20	20-Jun-20	30-Jan-19 A	20-Jun-20	04-Nov-19	25-Jan-20	-148	70.92%										
08-1105(2) (M22)	Prefabrication for Caisson (No.1 to No.3)		121			29-May-19 A	27-Sep-19 A				100%										
08-1105(3) (M22)	Prefabrication for Caisson (No.4 to No.13)		121			31-Jul-19 A	29-Nov-19 A				100%										
08-1105(4) (M22)	Prefabrication for Caisson (No.14 to No.23)		149	31-Mar-20	05-Apr-20	09-Nov-19 A	05-Apr-20	05-Dec-19	11-Dec-19	-117	80%										
08-1105(5) (M22)	Prefabrication for Caisson (No.24 to No.33)		159	31-Mar-20	06-May-20	30-Nov-19 A	06-May-20	04-Nov-19	11-Dec-19	-148	0%										
08-1105(6) (M22)	Prefabrication for Caisson (No.34 to No.43)		30	07-May-20	05-Jun-20	07-May-20	05-Jun-20	11-Dec-19	10-Jan-20	-148	0%										
08-1105(7) (M22)	Prefabrication for Caisson (No.44 to No.50)		29	23-May-20	20-Jun-20	23-May-20	20-Jun-20	27-Dec-19	25-Jan-20	-148	0%										
08-1110	Caisson Laying (Total 43nrs for Seawall Structure and 7nrs for Marine Access, @2 nrs/week)	Start On or After	278	21-Jun-20	20-Jul-20	17-Oct-19 A	20-Jul-20	25-Jan-20	24-Feb-20	-148	18%										
08-1115(3)	Caisson infill, Solid ballast, toe protection, precast concrete blocks ...etc Laying		333	31-Mar-20	04-Oct-20	07-Nov-19 A	04-Oct-20	25-Feb-20	31-Aug-20	-35	24.8%										
08-1120	Wave Wall Construction		120	30-Sep-21	27-Jan-22	30-Sep-21	27-Jan-22	05-Sep-21	03-Jan-22	-25	0%										
EP_SP_66_12-WP-3-M28.08.1.1.2	Seawall at Dredging Area		605	31-Mar-20	18-Oct-20	22-Feb-19 A	18-Oct-20	11-Dec-19	03-Jan-22	441											
08-1130	Dredging Works (26,000m3 @ 285m3/d avg, to comply EP Conditions 2.18)		301			22-Feb-19 A	20-Dec-19 A				100%										
08-1140	Lay Rock & Sand Fill		308	31-Mar-20	29-Apr-20	27-Jun-19 A	29-Apr-20	26-Dec-19	25-Jan-20	-96	80%										
08-1150	Place Rubble Mound (35,000m3 approx, @550m3/d)	Start On or After	196	31-Mar-20	14-May-20	01-Nov-19 A	14-May-20	11-Dec-19	25-Jan-20	-111	70%										
08-1155(2)	Fabrication and delivery of Precast Seawall Blocks (323nr. approx)	Start On or After	227	31-Mar-20	10-Jun-20	28-Oct-19 A	10-Jun-20	14-Dec-19	24-Feb-20	-108	85%										
08-1160	Lay Concrete Block Walls (300m length approx, @4m/d)		182	28-May-20	20-Jul-20	21-Jan-20 A	20-Jul-20	01-Jan-20	24-Feb-20	-148	10%										
08-1170	Insitu Concrete Wall Construction		90	21-Jul-20	18-Oct-20	21-Jul-20	18-Oct-20	05-Oct-21	03-Jan-22	441	0%										
EP_SP_66_12-WP-3-M28.08.1.2	Phase II - Reclamation, Breakwater and Berth Construction		1247	31-Mar-20	11-Jun-22	12-Jan-19 A	11-Jun-22	21-Dec-19	02-Jan-23	204											
EP_SP_66_12-WP-3-M28.08.1.2.1	Reclamation		1247	31-Mar-20	11-Jun-22	12-Jan-19 A	11-Jun-22	21-Dec-19	06-Jun-22	-6											
08-1180	Geotextile Laying (Approx. 60,000m2, @ 450m2/d)		323			12-Jan-19 A	01-Dec-19 A				100%										
08-1185(2)	Sand Blanket Laying (Approx. 120,000m3, @ 1200m3/d)		198	31-Mar-20	14-Apr-20	30-Sep-19 A	14-Apr-20	10-Feb-20	25-Feb-20	-50	85%										
08-1190	Install Vertical Band Drain by Barge (approx. 80,000 nr. @ 500/d)	Start On or After	111	31-Mar-20	04-Jun-20	15-Feb-20 A	04-Jun-20	21-Dec-19	25-Feb-20	-101	12.5%										
08-1200	Reclamation fill up to +2.5mPD (1,500,025m3 @ 4000m3/d)		375	22-Jul-20	31-Jul-21	22-Jul-20	31-Jul-21	25-Feb-20	06-Mar-21	-148	0%										
08-1210	Reclamation fill from +2.5 to Formation Level (510,000m3 @ 4250m3/d)		120	02-Jun-21	29-Sep-21	02-Jun-21	29-Sep-21	05-Jan-21	05-May-21	-148	0%										
08-1220	Lay Surcharge (605,000m3 @ 7600m3/d)		80	11-Aug-21	29-Oct-21	11-Aug-21	29-Oct-21	16-Mar-21	04-Jun-21	-148	0%										
08-1230	Surcharge Period		180	30-Oct-21	27-Apr-22	30-Oct-21	27-Apr-22	04-Jun-21	01-Dec-21	-148	0%										
08-1240	Remove Surcharge		85	04-Mar-22	27-May-22	04-Mar-22	27-May-22	07-Oct-21	31-Dec-21	-148	0%										
EP_SP_66_12-WP-3-M28.08.1.2.1.1	Instrumentation		752	20-May-20	11-Jun-22	20-May-20	11-Jun-22	06-Nov-20	06-Jun-22	-6											
08-1330 (M23)	Placing Settlement Plates for Settlement Markers on Top of Sand Blanket (~18nrs)		30	20-May-20	19-Jun-20	20-May-20	19-Jun-20	06-Nov-20	06-Dec-20	169	0%										
08-1340 (M23)	Placing Settlement Plates for Settlement Markers on +2.5mPD (~42nrs)		120	03-May-21	30-Aug-21	03-May-21	30-Aug-21	06-Dec-20	05-Apr-21	-148	0%										
08-1350 (M23)	Extension of instruments above +2.5mPD		65	07-Jul-21	09-Sep-21	07-Jul-21	09-Sep-21	21-Mar-21	25-May-21	-108	0%										
08-1360 (M23)	Extension of instruments to intermediate levels		42	04-Aug-21	14-Sep-21	04-Aug-21	14-Sep-21	18-Apr-21	30-May-21	-108	0%										
08-1370 (M23)	Extension of instruments to finished levels		42	09-Aug-21	19-Sep-21	09-Aug-21	19-Sep-21	23-Apr-21	04-Jun-21	-108	0%										
08-1375 (M23)	Extension of instruments to surcharge top levels		65	20-Sep-21	23-Nov-21	20-Sep-21	23-Nov-21	03-Aug-21	07-Oct-21	-48	0%										
08-1380 (M23)	Lower down the instruments to finished ground levels		60	13-Apr-22	11-Jun-22	13-Apr-22	11-Jun-22	07-Apr-22	06-Jun-22	-6	0%										
EP_SP_66_12-WP-3-M28.08.1.2.2	Breakwater		829	19-Apr-20	23-Jun-21	18-Mar-19 A	23-Jun-21	30-Nov-21	02-Jan-23	557											
08-1250	Geotextile and Sand Blanket Laying		319			18-Mar-19 A	31-Jan-20 A				100%										
08-1260	DCM Injection Works (290,000m3, approx 3200 nr.)		240	02-May-20	29-May-20	03-Oct-19 A	29-May-20	30-Nov-21	27-Dec-21	577	57%										
08-1270	DCM Final Completion Test		71	19-Apr-20	28-Jun-20	19-Apr-20	28-Jun-20	30-Nov-21	09-Feb-22	590	0%										
08-1280	Rubble Mound Laying (100,000m3 approx, @550m3/d)		188	18-Jun-20	22-Dec-20	18-Jun-20	22-Dec-20	29-Jan-22	05-Aug-22	590	0%										
08-1285(1)	Prefabrication for Caisson		180																		

