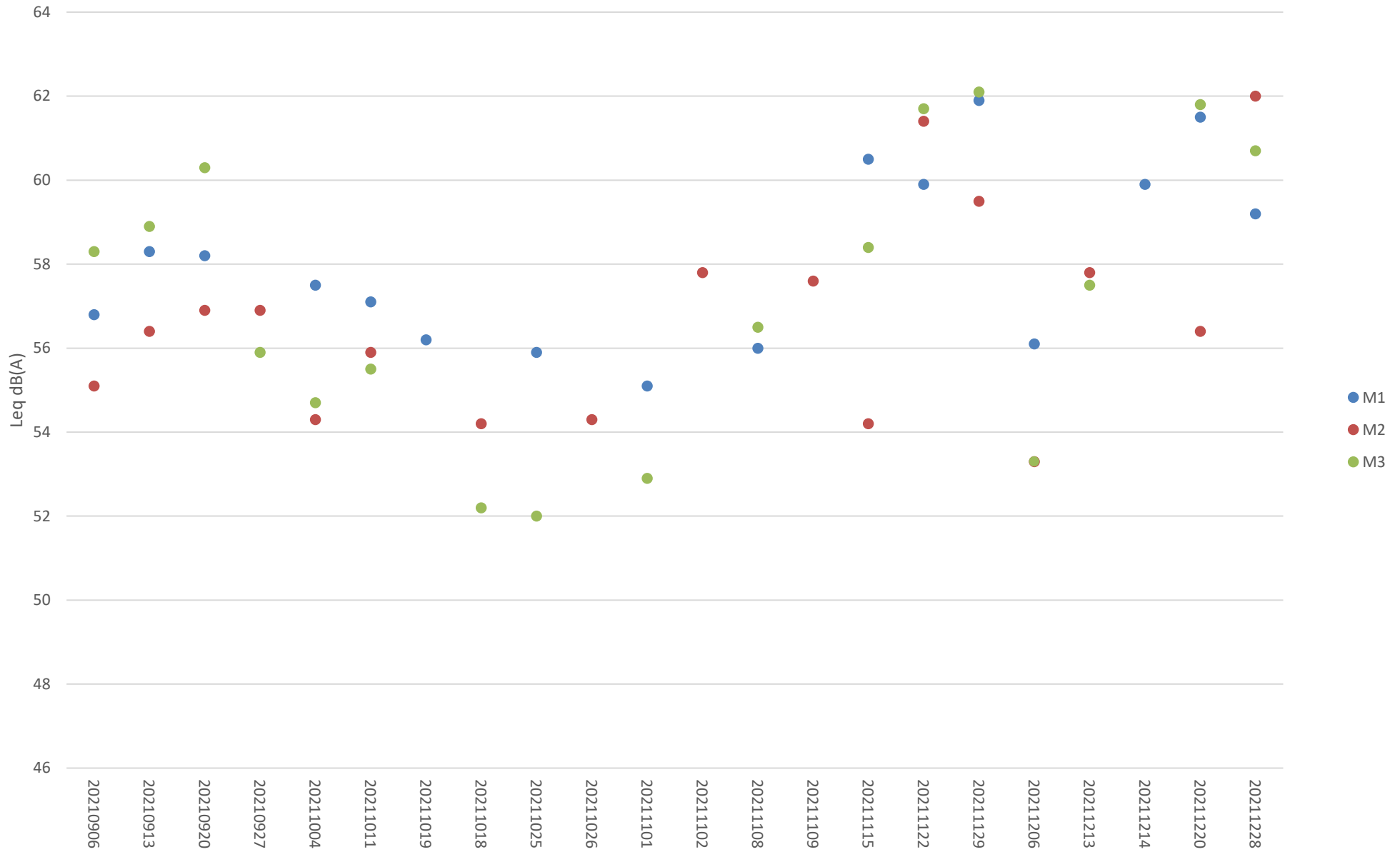
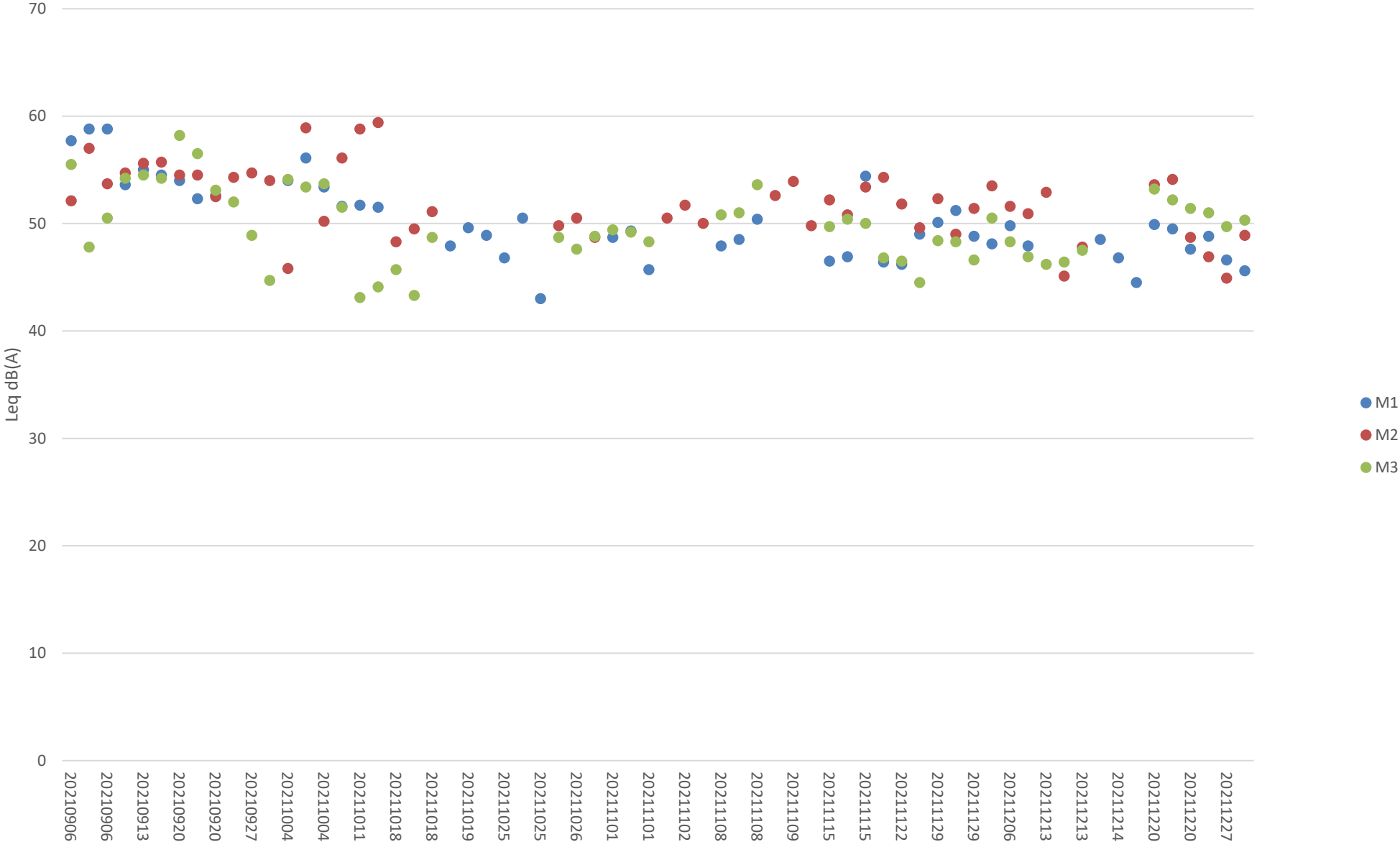


Appendix D Noise Monitoring Data Trending

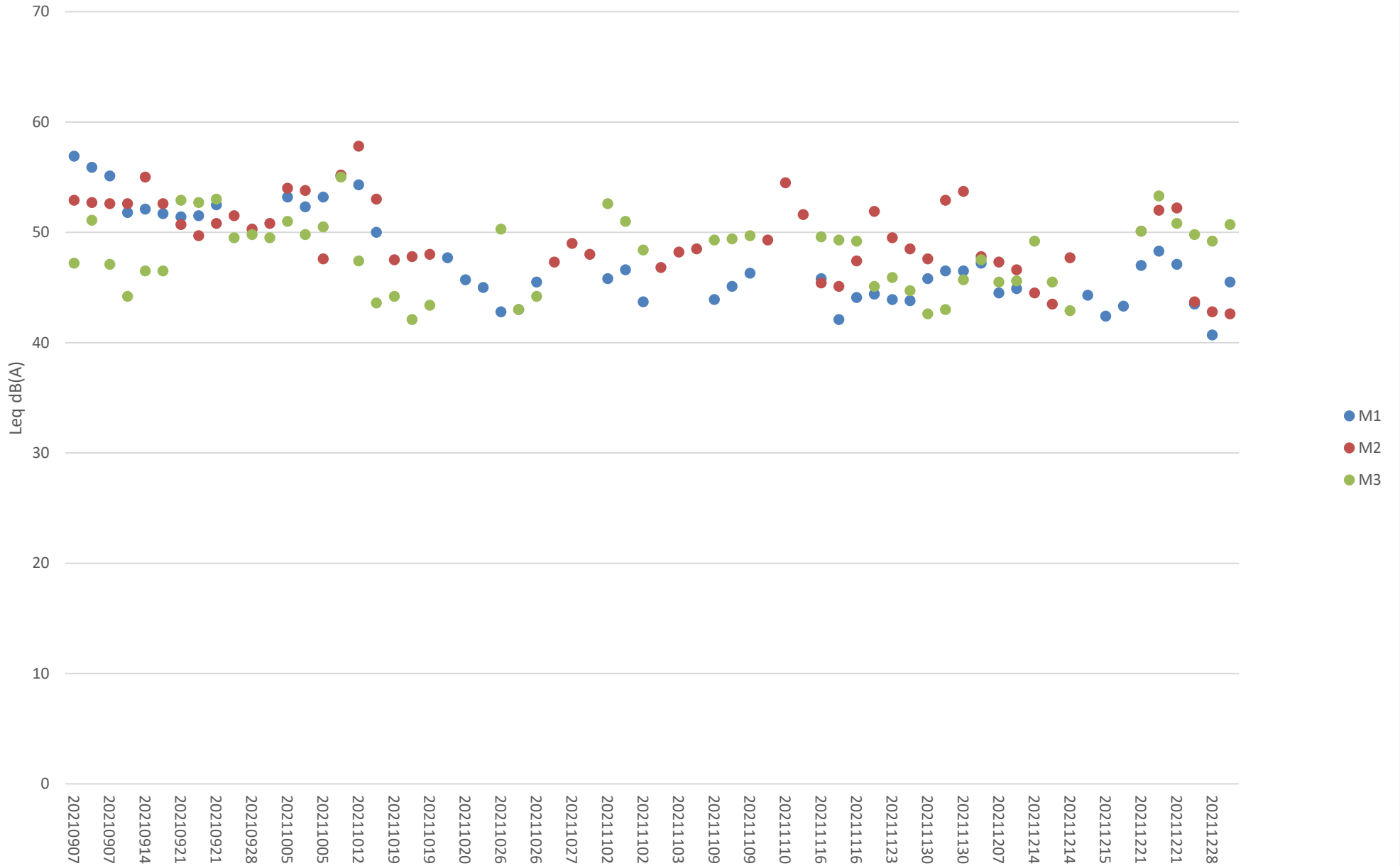
Impact Noise Monitoring Results during Day Time (0700 - 1900 hours)



Additional Impact Noise Monitoring Results during Evening Time (1900 - 2300 hours)



Additional Impact Noise Monitoring Results during Night Time (2300 - 0700 hours)



Summary of the Construction Activities Undertaken during the Reporting Period

Location of works	Construction activities undertaken	Remarks on progress
Reclamation area	<ul style="list-style-type: none"> • Reclamation Works • PVD Remedial Works • Installation of Instrumentation • Site Investigation works for foundation • Foundation works 	<ul style="list-style-type: none"> • On-going • On-going • On-going • On-going • On-going
Seawall portion	<ul style="list-style-type: none"> • Installation of caisson • Installation of Chinese Pod • Caisson extension works, from +3mPD to +6mPD, at Seawall A and B 	<ul style="list-style-type: none"> • On-going • On-going • On-going

Location: Shek Kwu Chau Treatment & Rehabilitation Centre Hostel 1 (M1 / N_S1)

Monitoring date: 4, 11, 19, 25 October 2021 (Daytime)
4&5, 11&12, 19&20, 25&26 October 2021 (Evening & Night time)

Parameter : $L_{eq\ 30min}$ (Daytime), $L_{eq\ 5min}$ (Evening & Night time)

Noise source other than Nil
construction activities from
the Project:

Noise Monitoring Data:

Date	Start time		End time	Weather	$L_{eq\ 30min}$ dB(A) / $L_{eq\ 5min}$ dB(A)	Sound Level Meter Used	Calibrator Used
4 Oct 2021	14:11	-	14:41	Fine	57.5	XL2 (Serial No. A2A-13548-E0)	Svantek SV33B (No. 83042)
4 Oct 2021	19:11	-	19:16	Fine	54.0	XL2 (Serial No. A2A-13548-E0)	Svantek SV33B (No. 83042)
	20:16	-	20:21		56.1		
	21:31	-	21:36		53.4		
5 Oct 2021	01:11	-	01:16	Fine	53.2	XL2 (Serial No. A2A-13548-E0)	Svantek SV33B (No. 83042)
	03:21	-	03:26		52.3		
	05:31	-	05:36		53.2		
11 Oct 2021	14:07	-	14:37	Cloudy	57.1	XL2 (Serial No. A2A-13548-E0)	Svantek SV33B (No. 83042)
11 Oct 2021	19:17	-	19:22	Fine	51.6	XL2 (Serial No. A2A-13548-E0)	Svantek SV33B (No. 83042)
	20:17	-	20:22		51.7		
	21:32	-	21:37		51.5		
12 Oct 2021	01:37	-	01:42	Fine	55.1	XL2 (Serial No. A2A-13548-E0)	Svantek SV33B (No. 83042)
	03:32	-	03:37		54.3		
	05:27	-	05:32		50.0		
19 Oct 2021	13:34	-	14:04	Sunny	56.2	SVAN 971 (Serial No. 96063)	Svantek SV33B (No. 83042)
19 Oct 2021	19:04	-	19:09	Fine	47.9	SVAN 971 (Serial No. 96063)	Svantek SV33B (No. 83042)
	20:14	-	20:19		49.6		
	21:19	-	21:24		48.9		
20 Oct 2021	01:19	-	01:24	Fine	47.7	SVAN 971 (Serial No. 96063)	Svantek SV33B (No. 83042)
	03:14	-	03:19		45.7		
	05:04	-	05:09		45.0		
25 Oct 2021	13:33	-	14:03	Sunny	55.9	SVAN 971 (Serial No. 96062)	Svantek SV33B (No. 83042)
25 Oct 2021	19:03	-	19:08	Fine	46.8	SVAN 971 (Serial No. 96062)	Svantek SV33B (No. 83042)
	20:28	-	20:33		50.5		
	21:18	-	21:23		43.0		
26 Oct 2021	1:23	-	01:28	Fine	42.8	SVAN 971 (Serial No. 96062)	Svantek SV33B (No. 83042)
	3:18	-	03:23		43.0		
	5:13	-	05:18		45.5		

Location: Shek Kwu Chau Treatment & Rehabilitation Centre Hostel 1 (M1 / N_S1)

Monitoring date: 1, 8, 15, 22, 29 November 2021 (Daytime)

1&2, 8&9, 15&16, 22&23, 29&30 November 2021 (Evening & Night time)

Parameter : $L_{eq\ 30min}$ (Daytime), $L_{eq\ 5min}$ (Evening & Night time)

Noise source other than construction activities from the Project: Nil

Noise Monitoring Data:

Date	Start time		End time	Weather	$L_{eq\ 30min}$ dB(A) / $L_{eq\ 5min}$ dB(A)	Sound Level Meter Used	Calibrator Used
1 Nov 2021	13:43	-	14:13	Sunny	55.1	SVAN 971 (Serial No. 96062)	Svantek SV33B (No. 83042)
1 Nov 2021	19:08	-	19:13	Fine	48.7	SVAN 971 (Serial No. 96062)	Svantek SV33B (No. 83042)
	20:18	-	20:23		49.3		
	21:23	-	21:28		45.7		
2 Nov 2021	01:18	-	01:23	Fine	45.8	SVAN 971 (Serial No. 96062)	Svantek SV33B (No. 83042)
	03:03	-	03:08		46.6		
	05:33	-	05:38		43.7		
8 Nov 2021	13:11	-	13:41	Sunny	56.0	SVAN 971 (Serial No. 96062)	Svantek SV33B (No. 83042)
8 Nov 2021	19:16	-	19:21	Fine	47.9	SVAN 971 (Serial No. 96062)	Svantek SV33B (No. 83042)
	20:26	-	20:31		48.5		
	21:46	-	21:51		50.4		
9 Nov 2021	01:16	-	01:21	Fine	43.9	SVAN 971 (Serial No. 96062)	Svantek SV33B (No. 83042)
	03:41	-	03:46		45.1		
	05:31	-	05:36		46.3		
15 Nov 2021	13:05	-	13:35	Sunny	60.5	SVAN 971 (Serial No. 96063)	Svantek SV33B (No. 83042)
15 Nov 2021	19:00	-	19:05	Fine	46.5	SVAN 971 (Serial No. 96063)	Svantek SV33B (No. 83042)
	20:05	-	20:10		46.9		
	21:30	-	21:35		54.4		
16 Nov 2021	01:05	-	01:10	Fine	45.8	SVAN 971 (Serial No. 96063)	Svantek SV33B (No. 83042)
	03:10	-	03:15		42.1		
	05:00	-	05:05		44.1		
22 Nov 2021	12:58	-	13:28	Fine	59.9	SVAN 971 (Serial No. 96062)	Svantek SV33B (No. 83042)
22 Nov 2021	19:03	-	19:08	Fine	46.4	SVAN 971 (Serial No. 96062)	Svantek SV33B (No. 83042)
	20:13	-	20:18		46.2		
	21:18	-	21:23		49.0		
23 Nov 2021	01:08	-	01:13	Fine	44.4	SVAN 971 (Serial No. 96062)	Svantek SV33B (No. 83042)
	03:28	-	03:33		43.9		
	05:18	-	05:23		43.8		
29 Nov 2021	14:09	-	14:39	Sunny	61.9	SVAN 971 (Serial No. 96062)	Svantek SV33B (No. 83042)

Date	Start time		End time	Weather	L_{eq 30min} dB(A) / L_{eq 5min} dB(A)	Sound Level Meter Used	Calibrator Used
29 Nov 2021	19:24	-	19:29	Fine	50.1	SVAN 971 (Serial No. 96062)	Svantek SV33B (No. 83042)
	20:19	-	20:24		51.2		
	21:29	-	21:34		48.8		
30 Nov 2021	01:09	-	01:14	Fine	45.8	SVAN 971 (Serial No. 96062)	Svantek SV33B (No. 83042)
	03:19	-	03:24		46.5		
	05:09	-	05:14		46.5		

Location: Shek Kwu Chau Treatment & Rehabilitation Centre Hostel 1 (M1 / N_S1)

Monitoring date: 6, 14, 20, 28 December 2021 (Daytime)

6&7, 14&15, 20&21, 28&29 December 2021 (Evening & Night time)

Parameter : $L_{eq\ 30min}$ (Daytime), $L_{eq\ 5min}$ (Evening & Night time)

Noise source other than construction activities from the Project: Nil

Noise Monitoring Data:

Date	Start time		End time	Weather	$L_{eq\ 30min}$ dB(A) / $L_{eq\ 5min}$ dB(A)	Sound Level Meter Used	Calibrator Used
6 Dec 2021	11:24	-	11:54	Sunny	56.1	SVAN 971 (Serial No. 96063)	Svantek SV33B (No. 83042)
6 Dec 2021	19:14	-	19:19	Fine	48.1	SVAN 971 (Serial No. 96063)	Svantek SV33B (No. 83042)
	20:14	-	20:19		49.8		
	21:24	-	21:29		47.9		
7 Dec 2021	1:14	-	1:19	Fine	47.2	SVAN 971 (Serial No. 96063)	Svantek SV33B (No. 83042)
	3:29	-	3:34		44.5		
	5:39	-	5:44		44.9		
14 Dec 2021	12:50	-	13:20	Sunny	59.9	SVAN 971 (Serial No. 96063)	Svantek SV33B (No. 83042)
14 Dec 2021	19:05	-	19:10	Fine	48.5	SVAN 971 (Serial No. 96063)	Svantek SV33B (No. 83042)
	20:05	-	20:10		46.8		
	21:05	-	21:10		44.5		
15 Dec 2021	1:20	-	1:25	Fine	44.3	SVAN 971 (Serial No. 96063)	Svantek SV33B (No. 83042)
	3:25	-	3:30		42.4		
	5:20	-	5:25		43.3		
20 Dec 2021	13:37	-	14:07	Cloudy	61.5	SVAN 971 (Serial No. 96063)	Svantek SV33B (No. 83042)
20 Dec 2021	19:07	-	19:12	Fine	49.9	SVAN 971 (Serial No. 96063)	Svantek SV33B (No. 83042)
	20:12	-	20:17		49.5		
	21:12	-	21:17		47.6		
21 Dec 2021	1:22	-	1:27	Fine	47.0	SVAN 971 (Serial No. 96063)	Svantek SV33B (No. 83042)
	3:07	-	3:12		48.3		
	5:17	-	5:22		47.1		
28 Dec 2021	10:58	-	11:28	Fine	59.2	SVAN 971 (Serial No. 96062)	Svantek SV33B (No. 83042)
28 Dec 2021	19:03	-	19:08	Fine	48.8	SVAN 971 (Serial No. 96062)	Svantek SV33B (No. 83042)
	20:13	-	20:18		46.6		
	21:23	-	21:28		45.6		
29 Dec 2021	1:13	-	1:18	Fine	43.5	SVAN 971 (Serial No. 96062)	Svantek SV33B (No. 83042)
	3:03	-	3:08		40.7		
	5:08	-	5:13		45.5		

Location: Shek Kwu Chau Treatment & Rehabilitation Centre Hostel 2 (M2 / N_S2)

Monitoring date: 4, 11, 18, 26 October 2021 (Daytime)
4&5, 11&12, 18&19, 26&27 October 2021 (Evening & Night time)

Parameter : $L_{eq\ 30min}$ (Daytime), $L_{eq\ 5min}$ (Evening & Night time)

Noise source other than Nil
construction activities from
the Project:

Noise Monitoring Data:

Date	Start time		End time	Weather	$L_{eq\ 30min}$ dB(A) / $L_{eq\ 5min}$ dB(A)	Sound Level Meter Used	Calibrator Used
4 Oct 2021	13:10	-	13:40	Fine	55.4	SVAN 971 (Serial No. 96063)	Svantek SV33B (No. 83042)
4 Oct 2021	19:10	-	19:15	Fine	54.1	SVAN 971 (Serial No. 96063)	Svantek SV33B (No. 83042)
	20:10	-	20:15		55.3		
	21:10	-	21:15		52.9		
5 Oct 2021	01:10	-	01:15	Fine	51.4	SVAN 971 (Serial No. 96063)	Svantek SV33B (No. 83042)
	03:10	-	03:15		49.8		
	05:40	-	05:45		51.2		
11 Oct 2021	13:27	-	13:57	Cloudy	55.9	SVAN 971 (Serial No. 96062)	Svantek SV33B (No. 83042)
11 Oct 2021	19:32	-	19:37	Fine	56.1	SVAN 971 (Serial No. 96062)	Svantek SV33B (No. 83042)
	20:32	-	20:37		58.8		
	22:22	-	22:27		56.0		
12 Oct 2021	04:22	-	04:27	Fine	55.2	SVAN 971 (Serial No. 96062)	Svantek SV33B (No. 83042)
	04:57	-	05:02		57.8		
	05:17	-	05:22		53.0		
18 Oct 2021	13:09	-	13:39	Sunny	54.2	SVAN 971 (Serial No. 96062)	Svantek SV33B (No. 83042)
18 Oct 2021	19:04	-	19:09	Fine	48.3	SVAN 971 (Serial No. 96062)	Svantek SV33B (No. 83042)
	20:19	-	20:24		49.5		
	21:34	-	21:39		51.1		
19 Oct 2021	1:39	-	01:44	Fine	47.5	SVAN 971 (Serial No. 96062)	Svantek SV33B (No. 83042)
	3:24	-	03:29		47.8		
	5:14	-	05:19		48.0		
26 Oct 2021	13:18	-	13:23	Sunny	54.3	SVAN 971 (Serial No. 96062)	Svantek SV33B (No. 83042)
26 Oct 2021	19:03	-	19:08	Fine	49.8	SVAN 971 (Serial No. 96062)	Svantek SV33B (No. 83042)
	20:13	-	20:18		50.5		
	21:23	-	21:28		48.7		
27 Oct 2021	1:18	-	01:23	Fine	47.3	SVAN 971 (Serial No. 96062)	Svantek SV33B (No. 83042)
	3:23	-	03:28		49.0		
	5:18	-	05:23		48.0		

Location: Shek Kwu Chau Treatment & Rehabilitation Centre Hostel 2 (M2 / N_S2)

Monitoring date: 2, 9, 15, 22, 29 November 2021 (Daytime)

2&3, 9&10, 15&16, 22&23, 29&30 November 2021 (Evening & Night time)

Parameter : $L_{eq\ 30min}$ (Daytime), $L_{eq\ 5min}$ (Evening & Night time)

Noise source other than construction activities from the Project: Nil

Noise Monitoring Data:

Date	Start time		End time	Weather	$L_{eq\ 30min}$ dB(A) / $L_{eq\ 5min}$ dB(A)	Sound Level Meter Used	Calibrator Used
2 Nov 2021	13:25	-	13:55	Sunny	57.8	SVAN 971 (Serial No. 96062)	Svantek SV33B (No. 83042)
2 Nov 2021	19:15	-	19:20	Fine	50.5	SVAN 971 (Serial No. 96062)	Svantek SV33B (No. 83042)
	20:25	-	20:30		51.7		
	21:40	-	21:45		50.0		
3 Nov 2021	01:25	-	01:30	Fine	46.8	SVAN 971 (Serial No. 96062)	Svantek SV33B (No. 83042)
	03:30	-	03:35		48.2		
	05:25	-	05:30		48.5		
9 Nov 2021	13:05	-	13:35	Sunny	57.6	SVAN 971 (Serial No. 96063)	Svantek SV33B (No. 83042)
9 Nov 2021	19:15	-	19:20	Fine	52.6	SVAN 971 (Serial No. 96063)	Svantek SV33B (No. 83042)
	20:15	-	20:20		53.9		
	21:30	-	21:35		49.8		
10 Nov 2021	01:40	-	01:45	Fine	49.3	SVAN 971 (Serial No. 96063)	Svantek SV33B (No. 83042)
	03:15	-	03:20		54.5		
	05:30	-	05:35		51.6		
15 Nov 2021	13:04	-	13:34	Sunny	54.2	SVAN 971 (Serial No. 96062)	Svantek SV33B (No. 83042)
15 Nov 2021	19:14	-	19:19	Fine	52.2	SVAN 971 (Serial No. 96062)	Svantek SV33B (No. 83042)
	20:04	-	20:09		50.8		
	21:19	-	21:24		53.4		
16 Nov 2021	01:09	-	01:14	Fine	45.4	SVAN 971 (Serial No. 96062)	Svantek SV33B (No. 83042)
	03:19	-	03:24		45.1		
	05:09	-	05:14		47.4		
22 Nov 2021	14:22	-	14:52	Fine	61.4	SVAN 971 (Serial No. 96063)	Svantek SV33B (No. 83042)
22 Nov 2021	19:37	-	19:42	Fine	54.3	SVAN 971 (Serial No. 96063)	Svantek SV33B (No. 83042)
	20:22	-	20:27		51.8		
	22:02	-	22:07		49.6		
23 Nov 2021	01:27	-	01:32	Fine	51.9	SVAN 971 (Serial No. 96063)	Svantek SV33B (No. 83042)
	02:47	-	02:52		49.5		
	05:12	-	05:17		48.5		

Date	Start time		End time	Weather	L_{eq 30min} dB(A) / L_{eq 5min} dB(A)	Sound Level Meter Used	Calibrator Used
29 Nov 2021	13:24	-	13:54	Sunny	59.5	SVAN 971 (Serial No. 96063)	Svantek SV33B (No. 83042)
29 Nov 2021	19:04	-	19:09	Fine	52.3	SVAN 971 (Serial No. 96063)	Svantek SV33B (No. 83042)
	21:14	-	21:19		49.0		
	22:14	-	22:19		51.4		
30 Nov 2021	01:14	-	01:19	Fine	47.6	SVAN 971 (Serial No. 96063)	Svantek SV33B (No. 83042)
	03:09	-	03:14		52.9		
	04:19	-	04:24		53.7		

Location: Shek Kwu Chau Treatment & Rehabilitation Centre Hostel 2 (M2 / N_S2)

Monitoring date: 6, 13, 20, 28 December 2021 (Daytime)

6&7, 13&14, 20&21, 28&29 December 2021 (Evening & Night time)

Parameter : $L_{eq\ 30min}$ (Daytime), $L_{eq\ 5min}$ (Evening & Night time)

Noise source other than construction activities from the Project: Nil

Noise Monitoring Data:

Date	Start time		End time	Weather	$L_{eq\ 30min}$ dB(A) / $L_{eq\ 5min}$ dB(A)	Sound Level Meter Used	Calibrator Used
6 Dec 2021	11:50	-	12:20	Sunny	53.3	SVAN 971 (Serial No. 96062)	Svantek SV33B (No. 83042)
6 Dec 2021	19:05	-	19:10	Fine	53.5	SVAN 971 (Serial No. 96062)	Svantek SV33B (No. 83042)
	20:10	-	20:15		51.6		
	21:15	-	21:20		50.9		
7 Dec 2021	1:10	-	1:15	Fine	47.8	SVAN 971 (Serial No. 96062)	Svantek SV33B (No. 83042)
	3:10	-	3:15		47.3		
	5:15	-	5:20		46.6		
13 Dec 2021	13:13	-	13:43	Sunny	57.8	SVAN 971 (Serial No. 96062)	Svantek SV33B (No. 83042)
13 Dec 2021	19:03	-	19:08	Fine	52.9	SVAN 971 (Serial No. 96062)	Svantek SV33B (No. 83042)
	20:08	-	20:13		45.1		
	21:13	-	21:18		47.8		
14 Dec 2021	1:13	-	1:18	Fine	44.5	SVAN 971 (Serial No. 96062)	Svantek SV33B (No. 83042)
	3:08	-	3:13		43.5		
	5:18	-	5:23		47.7		
20 Dec 2021	13:48	-	14:18	Cloudy	56.4	SVAN 971 (Serial No. 96062)	Svantek SV33B (No. 83042)
20 Dec 2021	19:03	-	19:08	Fine	53.6	SVAN 971 (Serial No. 96062)	Svantek SV33B (No. 83042)
	20:03	-	20:08		54.1		
	21:08	-	21:13		48.7		
21 Dec 2021	1:08	-	1:13	Fine	50.1	SVAN 971 (Serial No. 96062)	Svantek SV33B (No. 83042)
	3:08	-	3:13		52.0		
	5:28	-	5:33		52.2		
28 Dec 2021	13:46	-	14:16	Fine	62.0	SVAN 971 (Serial No. 96063)	Svantek SV33B (No. 83042)
28 Dec 2021	19:01	-	19:06	Fine	46.9	SVAN 971 (Serial No. 96063)	Svantek SV33B (No. 83042)
	20:11	-	20:16		44.9		
	21:36	-	21:41		48.9		
29 Dec 2021	1:11	-	1:16	Fine	43.7	SVAN 971 (Serial No. 96063)	Svantek SV33B (No. 83042)
	3:01	-	3:06		42.8		
	5:06	-	5:11		42.6		

Location: Shek Kwu Chau Treatment & Rehabilitation Centre Hostel 3 (M3 / N_S3)

Monitoring date: 4, 11, 18, 25 October 2021 (Daytime)
4&5, 11&12, 18&19, 25&26 October 2021 (Evening & Night time)

Parameter : $L_{eq\ 30min}$ (Daytime), $L_{eq\ 5min}$ (Evening & Night time)

Noise source other than construction activities from the Project: Air-conditioner

Noise Monitoring data:

Date	Start time		End time	Weather	$L_{eq\ 30min\ dB(A)} / L_{eq\ 5min\ dB(A)}$	Sound Level Meter Used	Calibrator Used
4 Oct 2021	14:26	-	14:56	Fine	55.2	SVAN 971 (Serial No. 96062)	Svantek SV33B (No. 83042)
4 Oct 2021	19:11	-	19:16	Fine	45.2	SVAN 971 (Serial No. 96062)	Svantek SV33B (No. 83042)
	20:11	-	20:16		58.9		
	21:31	-	21:36		53.7		
5 Oct 2021	01:21	-	01:26	Fine	53.1	SVAN 971 (Serial No. 96062)	Svantek SV33B (No. 83042)
	02:56	-	03:01		48.3		
	05:46	-	05:51		45.1		
11 Oct 2021	14:04	-	14:34	Cloudy	55.5	SVAN 971 (Serial No. 96063)	Svantek SV33B (No. 83042)
11 Oct 2021	19:14	-	19:19	Fine	51.5	SVAN 971 (Serial No. 96063)	Svantek SV33B (No. 83042)
	20:09	-	20:14		43.1		
	21:24	-	21:27		44.1		
12 Oct 2021	01:09	-	01:14	Fine	55.0	SVAN 971 (Serial No. 96063)	Svantek SV33B (No. 83042)
	03:14	-	03:19		47.4		
	05:14	-	05:19		43.6		
18 Oct 2021	13:25	-	13:55	Sunny	52.2	SVAN 971 (Serial No. 96063)	Svantek SV33B (No. 83042)
18 Oct 2021	19:10	-	19:15	Fine	45.7	SVAN 971 (Serial No. 96063)	Svantek SV33B (No. 83042)
	20:15	-	20:20		43.3		
	21:15	-	21:20		48.7		
19 Oct 2021	1:15	-	01:20	Fine	44.2	SVAN 971 (Serial No. 96063)	Svantek SV33B (No. 83042)
	3:30	-	03:35		42.1		
	5:25	-	05:30		43.4		
25 Oct 2021	13:20	-	13:50	Sunny	52.0	SVAN 971 (Serial No. 96063)	Svantek SV33B (No. 83042)
25 Oct 2021	19:20	-	19:25	Fine	48.7	SVAN 971 (Serial No. 96063)	Svantek SV33B (No. 83042)
	20:25	-	20:30		47.6		
	21:30	-	21:35		48.8		
26 Oct 2021	1:35	-	1:40	Fine	50.3	SVAN 971 (Serial No. 96063)	Svantek SV33B (No. 83042)
	3:15	-	3:20		43.0		
	5:35	-	5:40		44.2		

Location: Shek Kwu Chau Treatment & Rehabilitation Centre Hostel 3 (M3 / N_S3)

Monitoring date: 1, 8, 15, 22, 29 November 2021 (Daytime)

1&2, 8&9, 15&16, 22&23, 29&30 November 2021 (Evening & Night time)

Parameter : $L_{eq\ 30min}$ (Daytime), $L_{eq\ 5min}$ (Evening & Night time)

Noise source other than construction activities from the Project: Air-conditioner

Noise Monitoring data:

Date	Start time		End time	Weather	$L_{eq\ 30min}$ dB(A) / $L_{eq\ 5min}$ dB(A)	Sound Level Meter Used	Calibrator Used
1 Nov 2021	13:22	-	13:52	Sunny	52.9	SVAN 971 (Serial No. 96063)	Svantek SV33B (No. 83042)
1 Nov 2021	19:02	-	19:07	Fine	49.4	SVAN 971 (Serial No. 96063)	Svantek SV33B (No. 83042)
	20:27	-	20:32		49.2		
	21:12	-	21:17		48.3		
2 Nov 2021	01:22	-	01:27	Fine	52.6	SVAN 971 (Serial No. 96063)	Svantek SV33B (No. 83042)
	03:07	-	03:12		51.0		
	05:37	-	05:42		48.4		
8 Nov 2021	13:05	-	13:35	Sunny	56.5	NTi XL2 (Serial No. A2A-17638-E0)	Svantek SV33B (No. 83042)
8 Nov 2021	19:05	-	19:10	Fine	50.8	NTi XL2 (Serial No. A2A-17638-E0)	Svantek SV33B (No. 83042)
	20:15	-	20:20		51.0		
	21:20	-	21:25		53.6		
9 Nov 2021	01:20	-	01:25	Fine	49.3	NTi XL2 (Serial No. A2A-17638-E0)	Svantek SV33B (No. 83042)
	03:30	-	03:35		49.4		
	05:45	-	05:50		49.7		
15 Nov 2021	13:00	-	13:30	Sunny	58.4	NTi XL2 (Serial No. A2A-17638-E0)	Svantek SV33B (No. 83042)
15 Nov 2021	19:00	-	19:05	Fine	49.7	NTi XL2 (Serial No. A2A-17638-E0)	Svantek SV33B (No. 83042)
	20:05	-	20:10		50.4		
	21:20	-	21:25		50.0		
16 Nov 2021	01:05	-	01:10	Fine	49.6	NTi XL2 (Serial No. A2A-17638-E0)	Svantek SV33B (No. 83042)
	03:15	-	03:20		49.3		
	05:00	-	05:05		49.2		
22 Nov 2021	13:56	-	14:26	Fine	61.7	NTi XL2 (Serial No. A2A-17638-E0)	Svantek SV33B (No. 83042)
22 Nov 2021	19:06	-	19:11	Fine	46.8	NTi XL2 (Serial No. A2A-17638-E0)	Svantek SV33B (No. 83042)
	20:06	-	20:11		46.5		
	21:06	-	21:11		44.5		

Date	Start time		End time	Weather	L_{eq 30min} dB(A) / L_{eq 5min} dB(A)	Sound Level Meter Used	Calibrator Used
23 Nov 2021	01:11	-	01:16	Fine	45.1	NTi XL2 (Serial No. A2A-17638-E0)	Svantek SV33B (No. 83042)
	03:06	-	03:11		45.9		
	05:16	-	05:21		44.7		
29 Nov 2021	13:36	-	14:06	Sunny	62.1	NTi XL2 (Serial No. A2A-17638-E0)	Svantek SV33B (No. 83042)
29 Nov 2021	19:06	-	19:11	Fine	48.4	NTi XL2 (Serial No. A2A-17638-E0)	Svantek SV33B (No. 83042)
	20:06	-	20:11		48.3		
	21:21	-	21:26		46.6		
30 Nov 2021	01:11	-	01:16	Fine	42.6	NTi XL2 (Serial No. A2A-17638-E0)	Svantek SV33B (No. 83042)
	03:16	-	03:21		43.0		
	05:16	-	05:21		45.7		

Location: Shek Kwu Chau Treatment & Rehabilitation Centre Hostel 3 (M3 / N_S3)

Monitoring date: 6, 13, 20, 28 December 2021 (Daytime)

6&7, 13&14, 20&21, 28&29 December 2021 (Evening & Night time)

Parameter : $L_{eq\ 30min}$ (Daytime), $L_{eq\ 5min}$ (Evening & Night time)

Noise source other than construction activities from the Project: Air-conditioner

Noise Monitoring data:

Date	Start time		End time	Weather	$L_{eq\ 30min}$ dB(A) / $L_{eq\ 5min}$ dB(A)	Sound Level Meter Used	Calibrator Used
6 Dec 2021	11:35	-	12:05	Sunny	53.3	NTi XL2 (Serial A2A-17638-E0)	Svantek SV33B (No. 83042)
6 Dec 2021	19:05	-	19:10	Fine	50.5	NTi XL2 (Serial A2A-17638-E0)	Svantek SV33B (No. 83042)
	20:10	-	20:15		48.3		
	21:20	-	21:25		46.9		
7 Dec 2021	1:05	-	1:10	Fine	47.5	NTi XL2 (Serial A2A-17638-E0)	Svantek SV33B (No. 83042)
	3:05	-	3:10		45.5		
	5:15	-	5:20		45.6		
13 Dec 2021	13:06	-	13:36	Sunny	57.5	NTi XL2 (Serial A2A-17638-E0)	Svantek SV33B (No. 83042)
13 Dec 2021	19:01	-	19:06	Fine	46.2	NTi XL2 (Serial A2A-17638-E0)	Svantek SV33B (No. 83042)
	20:06	-	20:11		46.4		
	21:06	-	21:11		47.5		
14 Dec 2021	1:21	-	1:26	Fine	49.2	NTi XL2 (Serial A2A-17638-E0)	Svantek SV33B (No. 83042)
	3:11	-	3:16		45.5		
	5:16	-	5:21		42.9		
20 Dec 2021	13:25	-	13:55	Cloudy	61.8	NTi XL2 (Serial A2A-17638-E0)	Svantek SV33B (No. 83042)
20 Dec 2021	19:05	-	19:10	Fine	53.2	NTi XL2 (Serial A2A-17638-E0)	Svantek SV33B (No. 83042)
	20:15	-	20:20		52.2		
	21:15	-	21:20		51.4		
21 Dec 2021	1:05	-	1:10	Fine	50.1	NTi XL2 (Serial A2A-17638-E0)	Svantek SV33B (No. 83042)
	3:05	-	3:10		53.3		
	5:10	-	5:15		50.8		
28 Dec 2021	11:18	-	11:48	Fine	60.7	NTi XL2 (Serial A2A-17638-E0)	Svantek SV33B (No. 83042)
28 Dec 2021	19:08	-	19:13	Fine	51.0	NTi XL2 (Serial A2A-17638-E0)	Svantek SV33B (No. 83042)
	20:08	-	20:13		49.7		
	21:13	-	21:18		50.3		
29 Dec 2021	1:13	-	1:18	Fine	49.8	NTi XL2 (Serial A2A-17638-E0)	Svantek SV33B (No. 83042)
	3:13	-	3:18		49.2		
	5:23	-	5:28		50.7		